

Walk-and-Talk™ interactive whiteboard user guide

Part number 370-0381-00
©2010 PolyVision Corporation
All rights reserved

Information in this document is subject to change without notice.
Reproduction in any manner without written permission of PolyVision Corporation is forbidden.

PolyVision is a registered trademark of Steelcase, Inc. ēno, Walk-and-Talk and Lightning are trademarks of PolyVision Corporation. Webster is a registered trademark of PolyVision Corporation.

This product is covered by one or more of the following patents:
Canada 2,100,624; EPO 600,576; EPO 871,935; Germany
69,321,445; WO 98/14888; US 4,777,329; US 5,248,856; US
5,327,161; US 5,434,370; US 5,583,323; US 5,585,605; US
5,623,129; US 5,665,942; US 5,790,114; US 5,838,309 US
6,353,193; US 6,355,895; US 6,445,384; US 6,667,739; Other
patents pending.

PolyVision Corporation reserves the right to make changes in product design, or detail, and to discontinue any product or material without notice.

Flash™ Player, Shockwave® Player, and Authorware® Player are owned by Adobe Systems.

Table of contents

Welcome	1
What are Walk-and-Talk products?	1
Register your PolyVision product	2
Installing your Walk-and-Talk whiteboard	3
Installation checklist	3
Mounting WT interactive whiteboards to a wall	3
What comes in the box	4
Preparing to mount the whiteboard	5
Mounting the whiteboard	7
Adding batteries to the WT remote control	8
Adding batteries to the Walk-and-Talk eraser	8
Install the PolyVision driver	10
System requirements	10
PolyVision driver installation	10
Getting started in projection mode	13
Using Walk-and-Talk products	15
Getting started with Walk-and-Talk	15
Operating Walk-and-Talk products	16
Remote control options	16
Remote control functions	17
Using Walk-and-Talk products with multiple monitors	20
LED and status messages on the WT interactive whiteboard	22
Sounds	24
Cursor control in projection mode	25
Using the on-screen keyboard	26
Using dry-erase markers	26
Writing in projection mode	27
Changing the pen style	29
Erasing in projection mode	29
Writing and erasing with IP models	30
Printing and saving	30
Spotlight and reveal options	31
Spotlighting your work	31
Revealing your work	32
Opening a blank window for writing	33

The PolyVision driver	34
Configuring PolyVision driver options	34
General options	35
Save options	36
Draw options	37
Print options.	38
Projection options	39
Hardware options.	40
Status of the PolyVision driver	41
Choosing alignment accuracy	41
Using on-screen tools	42
Getting help	42
Checking for updates.	43
Exiting the PolyVision driver	43
To uninstall the PolyVision driver in Windows	43
To uninstall the PolyVision driver on a Macintosh	44
To uninstall the PolyVision driver using Linux	44
Care and maintenance	45
Walk-and-Talk maintenance.	45
Replacing the Walk-and-Talk eraser pad	45
Cleaning the Walk-and-Talk whiteboard	45
Caring for dry-erase markers and erasers.	46
How to obtain replacement parts	46
Summer maintenance	46
Technical support	48
FCC compliance	49
Warranty	50
Appendix 1: Installing the Walk-and-Talk BT option	53
Installing the Walk-and-Talk Bluetooth (BT) adapter	53
Appendix 2: Using the WT BT (Bluetooth) option	58
Registering the whiteboard in Windows	58
Registering the whiteboard on a Macintosh	62
Registering the whiteboard using Linux	66
Confirming Bluetooth registration	69
Appendix 3: Using Walk-and-Talk Wireless (IR)	70
Index	73

Welcome

Congratulations on your purchase of a PolyVision® Walk-and-Talk interactive whiteboard.



What are Walk-and-Talk products?

Walk-and-Talk products include:

- Walk-and-Talk interactive whiteboards (WT)
- Walk-and-Talk Lightning™ interactive whiteboards (WTL)
- Walk-and-Talk Interactive Panels (IP)

Walk-and-Talk products provide cordless interactivity from anywhere in the room using a remote control. Walk-and-Talk interactive whiteboards enable you to:

- write with dry-erase markers and print or save your work
- use the whiteboard as a touch-screen for your computer that you control using your finger
- move freely about the room using the remote control to navigate documents, presentations, or web pages, and to annotate the computer screen with writing

- annotate the projected computer screen on the whiteboard with your finger, and print or save your work



With the PolyVision driver installed on your computer, you can write with dry-erase markers then print and save your work. When your computer is connected to a projector, your Walk-and-Talk product becomes a touch-screen monitor for your computer. (The IP models always operate this way.) You can control your computer using your finger (or the stylus for IP models), or you can roam freely about the room and operate your computer using the remote control touch pad and buttons.

To minimize cables in your working environment, Walk-and-Talk interactive whiteboards (WT and WTL) include two wireless options. The Walk-and-Talk Wireless option provides infrared wireless communication between your interactive whiteboard and your computer. (Refer to “Appendix 3: Using Walk-and-Talk Wireless (IR)” on page 70.) The Walk-and-Talk BT option provides Bluetooth wireless communication between your interactive whiteboard and your computer. (Refer to “Appendix 1: Installing the Walk-and-Talk BT option” on page 53.)

Register your PolyVision product

By registering your product, you receive enhanced customer service with information on software upgrades.

To register your PolyVision product:

- Register on-line at:
<http://register.polyvision.com>

Installing your Walk-and-Talk whiteboard

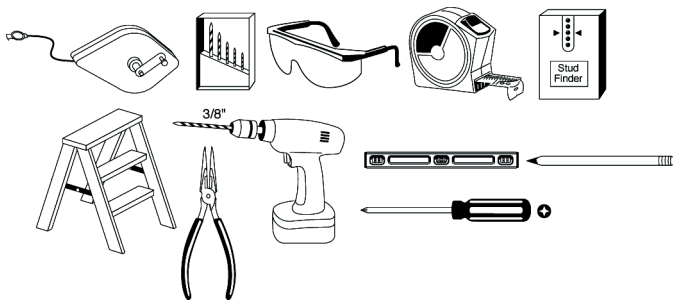
Each board weighs 77 to 102 pounds (35 to 46 kg). Plan your installation work accordingly. Two people are needed for portions of this installation.

Installation checklist

1. Mount the WT interactive whiteboard to a wall. (Refer to “Mounting WT interactive whiteboards to a wall” on page 3.)
2. Install the PolyVision driver on the computer. (Refer to “Install the PolyVision driver” on page 10.)
3. Install batteries in the WT remote control. (Refer to “Adding batteries to the WT remote control” on page 8.)
4. Install batteries in the WT eraser. (Refer to “Adding batteries to the Walk-and-Talk eraser” on page 8.)
5. Install the projector. (Refer to “Getting started in projection mode” on page 13.)
6. Test the WT interactive whiteboard. (Refer to “Using Walk-and-Talk products” on page 15.)

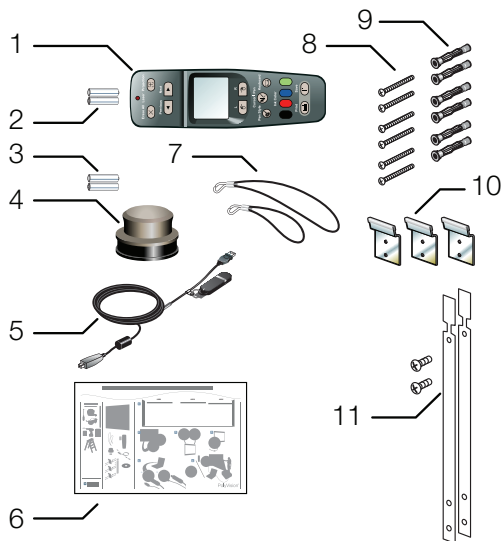
Mounting WT interactive whiteboards to a wall

You will need to provide these tools:



What comes in the box

1. remote control
2. remote control batteries (AAA)
3. eraser batteries (AAA)
4. eraser
5. USB cable with PolyKey for driver installation
6. Installation Quick Start
7. two remote control lanyards: one wrist-sized, one neck-sized
8. six (16xx models) or eight (18xx models) screws
9. six (16xx models) or eight (18xx models) sheet rock anchors
10. three (16xx models) or four (18xx models) wall brackets
11. two safety straps and screws



Preparing to mount the whiteboard

These instructions guide you through installing your interactive whiteboard on a sheetrock wall. If your wall material is some other substance, such as concrete or brick, use these instructions as a guideline but install appropriate anchors to secure the unit to the wall.

Locate and have ready to use:

- tape measure
- Phillips screwdriver
- drill
- level
- safety glasses
- pencil
- stud finder
- step stool
- models WT or WTL 16xx: three wall brackets and six sheetrock anchors with screws (provided)
- models WT or WTL 18xx: four wall brackets and eight sheetrock anchors with screws (provided)
- safety straps and screws (provided)

NOTE:

Instructions and fasteners are provided to help you install the whiteboard when walls have metal or wood studs. Be sure to locate wall studs and use them to drive mounting screws whenever possible.

To position the wall brackets:

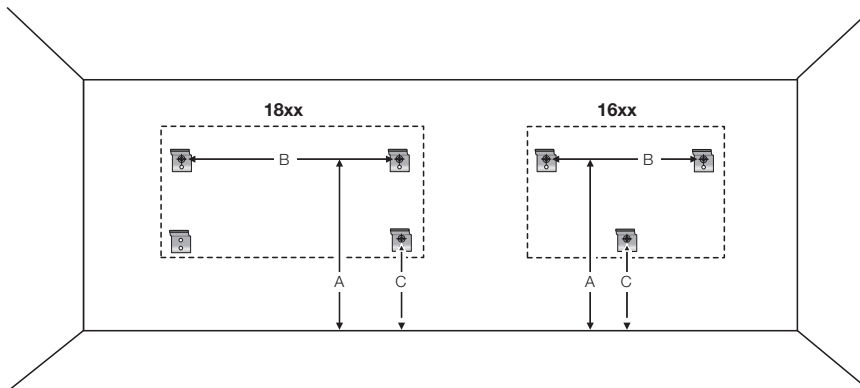
1. Choose a location on the wall with convenient access to your computer, an AC power outlet, and a projector or network connection, as appropriate.
2. Where possible, locate wall studs and select drill hole locations that align with wall studs. Sheetrock anchors are provided in case studs cannot be used.

- Carefully mark three (WT or WTL16xx) or four (WT or WTL 18xx) drill hole locations as indicated in the table and illustration below, based on your Walk-and-Talk model. Measurements are for a standard (adult) height whiteboard*:

Model	16xx	18xx
A: Distance from floor to top holes in upper brackets*	75" 1905 mm	75" 1905 mm
B: Distance between holes	48" 1219 mm	72" or 80"*** 1823 mm or 2032 mm
C: Distance from floor to top holes in lower brackets*	36.25" 920 mm	36.25" 920 mm

*To enable access for young children, reduce vertical measurements by 6 inches (152 mm).

**Choose either 72" or 80" (1823 mm or 2032 mm), whichever distance enables you to fasten the wall bracket to a wall stud.



- Using a wall bracket as a template, mark the screw hole locations for each wall bracket.
- If installing in sheetrock, install six (WT or WTL 16xx) or eight (WT or WTL 18xx) sheetrock anchors in the wall at the marked hole locations. If installing on some other substance such as concrete or brick, use appropriate anchors.

Mounting the whiteboard

To mount the wall brackets:

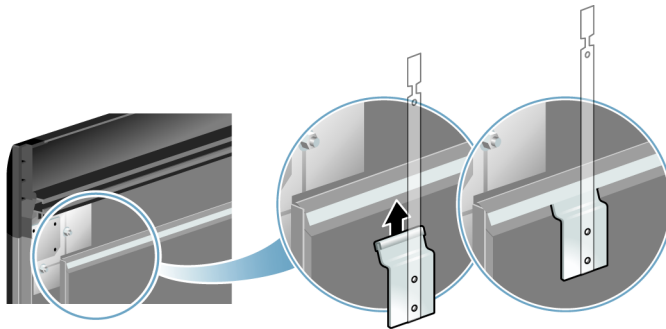
1. Fasten the two top wall brackets to the wall anchors with a safety strap sandwiched between the wall bracket and the wall.



2. Fasten the bottom wall bracket(s) to the wall.
3. Ensure that the screws are snug.

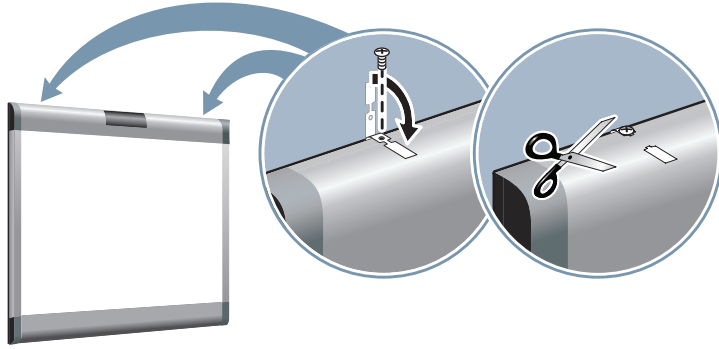
To mount the whiteboard:

1. With the help of an assistant, lift the whiteboard and hang it on the wall brackets.



2. Slide the whiteboard carefully to align the safety straps with the holes in the top of the whiteboard.

3. Fold over and fasten the two safety straps to the whiteboard using the screws provided.



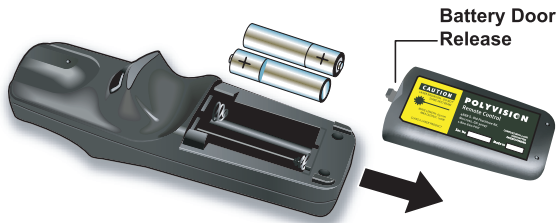
4. Using scissors, snip off the finger tabs on the safety strap.

Adding batteries to the WT remote control

The Walk-and-Talk infrared remote control uses two AAA batteries (provided).

To add batteries:

- Press down and pull back to release the battery compartment door.

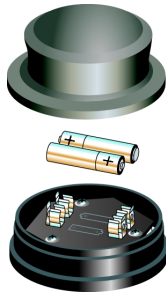


Adding batteries to the Walk-and-Talk eraser

The Walk-and-Talk eraser uses two AAA batteries (provided).

To add batteries:

1. Gently peel back the soft eraser handle to expose the battery compartment.



2. Insert the batteries as marked. Make sure that you place the batteries in with the positive terminals on the positive (+) side.

Install the PolyVision driver

System requirements

Your Windows-based computer must have:

- 500 MHz Pentium processor
- 512 MB Ram
- Windows XP SP2, Tablet XP SP2, Vista, or Windows 7
- VGA HD-15 video port
- USB port

Your Macintosh computer must have:

- PowerBook, G4, iBook, or iMac
- PowerPC G3 or higher or Intel-based processor
- 512 MB Ram
- OS X 10.4 or higher
- USB port

Your Linux system must have:

- Ubuntu 9.10 or Fedora 11 or later
- 600 MB free disk space
- 512 MB Ram
- USB port

PolyVision driver installation

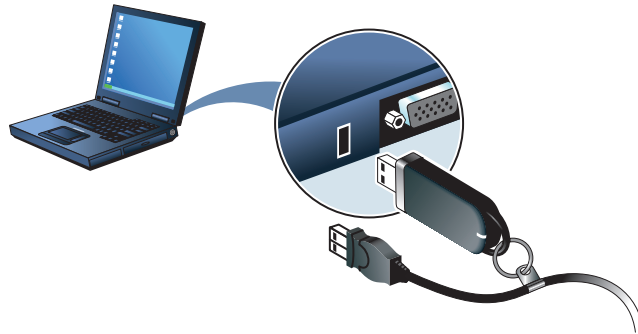
The PolyVision driver is always close at hand. You need no installation disk or CD-ROM. Driver installation takes place when you connect the PolyKey on the Walk-and-Talk USB cable to your computer's USB port.

NOTE:

The Power/Status LED on the lower left corner of the WT board glows solid yellow until the PolyVision driver on your computer is communicating with the board, then it turns green. Refer to “LED and status messages on the WT interactive whiteboard” on page 22.

To install the PolyVision driver:

1. Locate the Walk-and-Talk USB cable.
2. Connect the PolyKey on the USB cable to your computer's USB port.

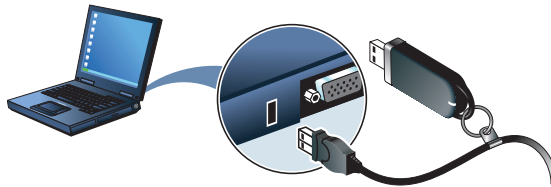


3. Installation should begin automatically. If it does not:
Windows: double-click "My Computer" on your desktop, double-click the disk named "PolyVision driver," and double-click "Setup.exe." Installation begins.
Linux: double-click the drive that appears on your desktop; double-click the "Linux" folder, right-click "Setup" and choose "Properties"; on the "Permissions" tab, click the "Allow executing file as program" check box; click "Close"; double-click "Setup." Installation begins.
Macintosh: double-click the PolyVision driver icon on your desktop, double-click the Macintosh folder, and double-click "PolyVision driver.mpkg." Installation begins.
4. Follow the prompts you see on the screen to complete the installation. On a Macintosh, you must reboot your system.

To start using the PolyVision driver and interactive whiteboard:

1. **Windows:** disconnect the PolyKey.
Macintosh: drag the PolyKey icon to the Trash or choose "Eject" from the File menu, then disconnect the PolyKey.

2. Connect the USB cable to your computer's USB port and the other cable end to your interactive whiteboard. The whiteboard's Power/Status LED should turn green. If it remains yellow, the driver is not properly installed.



When installation is complete, a message appears on your computer screen and the PolyVision driver icon appears in your system tray (Windows or Linux) or menu extras (Macintosh).



PolyVision driver icon

The PolyVision driver runs unobtrusively in the background whenever your computer is on. For information about configuring PolyVision driver options, refer to “Configuring PolyVision driver options” on page 34.

Getting started in projection mode

While using your whiteboard in projection mode, with a projector connected to your computer, powerful options become available.

In projection mode, the whiteboard becomes a touch-sensitive monitor for your computer. You can:

- control your computer from the touch-sensitive whiteboard
- run slide presentations and other software
- annotate the projected computer with writing or drawing
- print and save everything

To set up the projector and get started projecting your computer:

1. Locate your projector's video cable and connect it to the video port of your computer.
2. Connect the other end of the video cable to your projector.
3. Connect the projector's power cord to an outlet.
4. Turn on the projector and focus your computer screen squarely onto your whiteboard. The projected image does not need to fill the white area.

To align the projected image with a Lightning (WTL) whiteboard:

1. Assure that at least half of the projected image is actually projected onto the board.
2. Press the Projection button on the remote control one time.

To align the projected image with WT models:

1. Move the projector physically so that the entire solid-colored background is positioned inside the borders of the whiteboard.
2. Press the Projection button on the remote control.

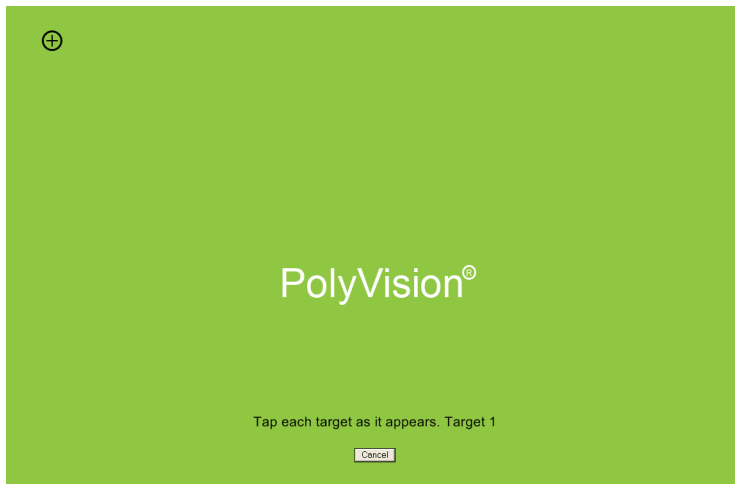
NOTE:

The Projection LED at the lower left corner of the board glows yellow while you are in projection mode.

NOTE:

At startup, the PolyVision driver recognizes if you are using the IP and automatically initiates projection mode. No alignment is necessary.

The alignment window shown below projects from the computer to the whiteboard.



3. Using your finger, tap the whiteboard exactly on each target, following instructions you see on the whiteboard.

When alignment is complete, you are ready to begin interacting with your computer.

The alignment between your projector and the PolyVision driver is important. PolyVision offers three levels of alignment: good, better, best. The default is “better” alignment. If you need to change the correspondence between the position of the cursor and the point of contact when you tap the whiteboard, refer to “Choosing alignment accuracy” on page 41.

To exit projection mode:

- Press the Projection button on the remote control.

Using Walk-and-Talk products

Getting started with Walk-and-Talk

PolyVision provides easy access to the PolyVision driver which is installed on the computer that interacts with Walk-and-Talk.

To get started using Walk-and-Talk:

1. Make sure the whiteboard is plugged in and turned on, if necessary.
2. Make sure the PolyVision driver is installed on the computer connected to the Walk-and-Talk interactive device. Refer to "Install the PolyVision driver" on page 10.
3. To write or draw on the WT or WTL whiteboard, choose a dry-erase marker and write or draw. (Refer to "Using dry-erase markers" on page 26.)
4. To erase, use only the battery-operated Walk-and-Talk eraser provided. (Refer to "Using dry-erase markers" on page 26.)
5. To write and erase using the Walk-and-Talk IP, use the stylus provided. (Refer to "Writing in projection mode" on page 27.)
6. To print a snapshot of the whiteboard, press Print on the remote control. (Refer to "Printing and saving" on page 30.)
7. To save a snapshot of the whiteboard as a file on the computer, press Save on the remote control. (Refer to "Printing and saving" on page 30.)
8. To project your computer on the WT or WTL whiteboard so you can navigate documents, presentations, or websites, press the Projection button on the remote. (Refer to "Getting started in projection mode" on page 13.)
9. To toggle between cursor control or writing in projection mode, press the Pen/Cursor button on the remote control. (Refer to "Remote control functions" on page 17.)
10. In projection mode, annotate the computer projection on the whiteboard by writing with your finger over the computer projection. (Refer to "Writing in projection mode" on page 27.)

11. To navigate the computer from the whiteboard, use your finger as the mouse on the whiteboard. (Refer to "Cursor control in projection mode" on page 25.)
12. To navigate the computer using the remote control, use your finger on the touch pad. (Refer to "Cursor control in projection mode" on page 25.)

NOTE:

The Walk-and-Talk IP always operates in projection mode using a stylus.

Operating Walk-and-Talk products

Remote control options

The Walk-and-Talk remote control operates at a distance of up to 40 feet (12 m) from Walk-and-Talk products.

Always point the remote control toward the infrared receiver:

- at the top of the interactive whiteboard
- at the remote control receiver that comes with your IP.

The remote control functions equally well from these locations:

- Carry the remote control with you using the wrist or neck lanyard provided.
- Place the remote control near you on a desk or table top pointed toward the infrared receiver.
- In projection mode, you can configure the PolyVision driver to project on-screen tools in a window that you use by tapping the buttons with your finger. (Refer to "Using on-screen tools" on page 42.)

Remote control functions

Erase All

Erase everything and start fresh. All writing, in dry-erase marker or projection mark-up, is erased from memory.

Ink Color

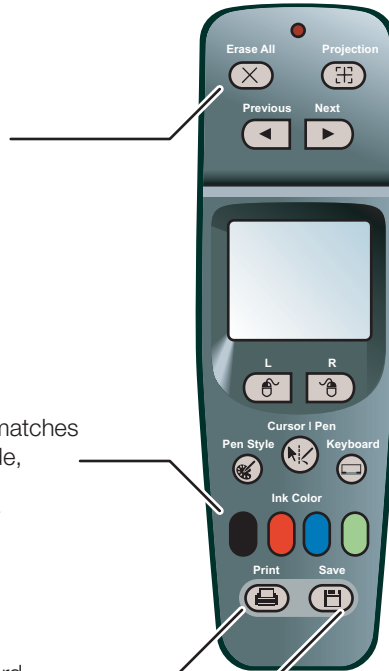
To write on the board, choose a dry-erase pen and press the button that matches the color. In projection mode, press one of these buttons to quickly change the color of mark-ups.

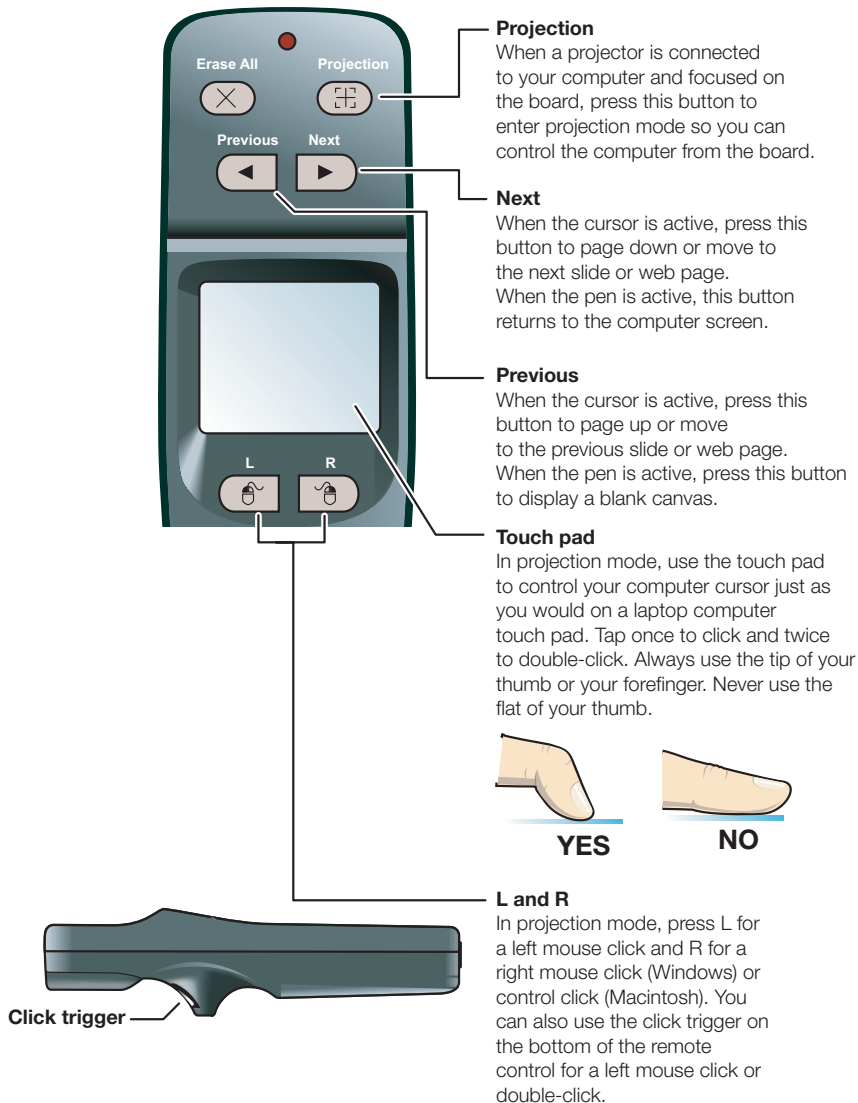
Print

Print a snapshot of the board using the default printer connected to your computer.

Save

Save a snapshot of your board as a file on your computer. The file can be in PDF, JPEG, TIFF, PNG, BMP and GIF.





Cursor/Pen

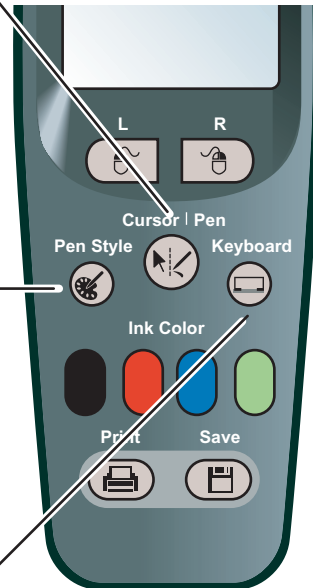
In projection mode, press this button to toggle between controlling the cursor and marking-up the image.

Pen Style

Press this button in projection mode to choose a new type of mark-up pen (color, width, and style).

Keyboard

In projection mode, press this button to toggle on and off the display of the on-screen keyboard. You can use the keyboard to enter text at the current text cursor position. Drag the keyboard to move it.



Using Walk-and-Talk products with multiple monitors

The PolyVision driver supports up to three projectors on the same computer showing separate parts of the computer's desktop. You may need to add an additional video card(s) to use multiple projectors.

Since all the Walk-and-Talk products connected to your computer are communicating via the PolyVision driver, you have the option of pointing the remote at the active device or at the most convenient of the communicating devices.

One remote control can operate up to three Walk-and-Talk products connected to your computer, but only one at a time. To determine which product is active, the remote control includes a three-position switch on the left side.



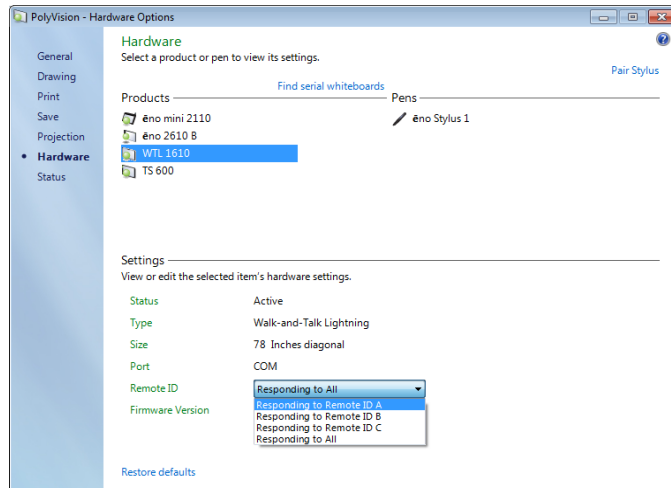
Three-position switch (A/B/C)

If you are not using multiple devices, the remote control functions equally whether it is set to A, B, or C. However, to use multiple Walk-and-Talk products with the same remote control, you must configure the PolyVision driver to assign each device to a remote control switch position (A, B, or C).

To configure the remote control:

1. Connect the devices to your computer's USB ports.
2. Click the PolyVision driver icon in the system tray (Windows or Linux) or menu extras (Macintosh).
3. Choose "Configure the PolyVision driver" from the menu.
4. Click "Hardware."

- Click the Walk-and-Talk (WT) product that you want to configure. The settings for that product appear.



- Click the drop down menu beside “Remote ID” and choose one of the options.
- Repeat for up to two additional WT devices connected to your computer.

To use the remote control with multiple devices:

- Configure the remote control switch to correspond to one of the Walk-and-Talk devices connected to the computer as described above.
- Write on or project a computer display on any or all of the connected Walk-and-Talk interactive products including whiteboards or integrated panels.
- To capture a snapshot or use other remote control functions, slide the switch to the position that matches the device you want to capture or operate.
- Point the remote toward any of the Walk-and-Talk products and press the desired remote control button. Any of the connected devices can receive infrared commands from your remote, but the function will take place only on the device that is associated with the remote control.

Snapshots that you save on your computer with multiple products connected continue to be numbered sequentially, regardless of which product is captured.

Each PolyVision product operates independently, so device “A” can capture a red marker while device “B” captures a blue marker.

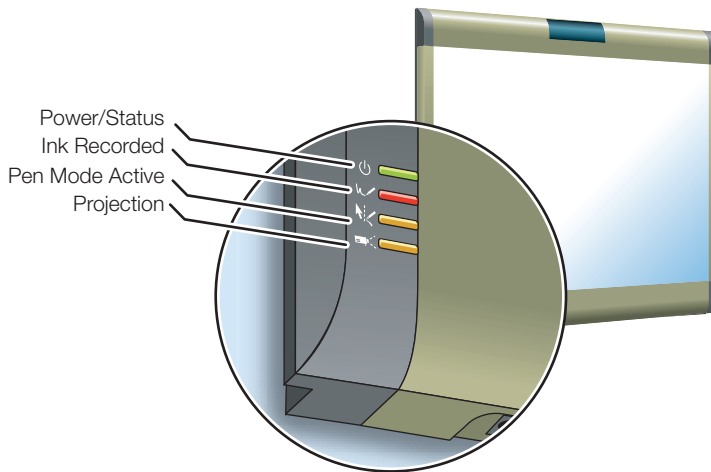
LED and status messages on the WT interactive whiteboard

Your Walk-and-Talk whiteboard provides both LED and audible feedback to indicate the status of your system.

NOTE:

WT and WTL whiteboards obtain power and data through the USB connection to your computer. If you are using the BT wireless option, refer to "Appendix 1: Installing the Walk-and-Talk BT option" on page 53.

LED indicators on the lower left edge of the board provide information about the status of the board.



The table below explains the Power/Status LED indications.

Power/Status LED	Meaning
Off	No power to the board.
Solid yellow	Hardware is working, but the PolyVision driver is not communicating.
Blinking yellow	Processing a command.
Green	Ready to use. Hardware is working, communicating with the PolyVision driver.
Red	Hardware problem.

The table below explains the Ink Recorded LED indications.

Ink Recorded LED	Meaning
Off	The PolyVision driver believes there is no dry-erase ink on the whiteboard.
Red	The PolyVision driver believes there is dry-erase ink on the board. Press the Erase All button on the remote control if this LED is red and there is no dry-erase ink on the board.

The table below explains the Pen Mode Active LED indications.

Pen Mode Active LED	Meaning
Off	The Walk-and-Talk whiteboard is not in projection mode, or while in projection mode, the cursor is active. Tap on the board to move the computer's mouse cursor.
Yellow	The board is in pen mode. Use a finger to draw on top of the projected image.

The table below explains the Projection Mode Active LED indications.

Projection Mode Active LED	Meaning
Off	The Walk-and-Talk whiteboard is capturing dry-erase ink over the entire surface of the board and is not controlling the computer.
Yellow	The Walk-and-Talk whiteboard is controlling the computer where the image is projected and capturing dry-erase ink elsewhere.
Blinking yellow	Projection alignment is needed. Press the Projection button on the remote control to re-align the image.

Sounds

While you use your whiteboard, sounds indicate the status of the system. You can disable or enable sounds; refer "General options" on page 35.

The following sounds indicate the whiteboard status:

Sound	Condition
Fanfare	Software launch or power on
Flop	Software exit or critical hardware errors
Click	Alignment point tapped or remote button pressed

Cursor control in projection mode

You can use your finger as both a pen or cursor in projection mode.

Walk-and-Talk enables you to write or to navigate the projected computer screen using either:

- your finger on the whiteboard
- the remote control buttons and touch pad

NOTE:

If you use the Walk-and-Talk IP, use the remote control or the stylus.

To toggle between writing and cursor control:

- press Cursor/Pen on the remote control

While using your finger as a cursor to control the computer from the whiteboard:

- To click, tap the whiteboard once.
- To double-click, tap twice rapidly.
- For a right-click (Windows) or control-click (Macintosh), hold your finger to the whiteboard for one second.

To operate your computer with the remote control, point it toward the infrared receiver on the Walk-and-Talk:

- To click or double-click, press the “L” button or the click trigger, or tap the touch pad on the remote control once or twice.
- For a right-click (Windows) or control-click (Macintosh), press the “R” button on the remote control.
- To page up or down through a document, press the “Next” or “Previous” button (for example, if PowerPoint is the active window, press “Next” to move to the next slide).

For IP models, control your computer using remote control, or use the stylus on the IP:

- To click, tap the panel once.
- To double-click, tap the panel twice rapidly or hover the stylus over the display and press the stylus button furthest from the tip.
- For a right-click (Windows) or control-click (Macintosh), hold the stylus to the panel for one second, or hover the stylus over the panel and press the stylus button near the tip.

When using the stylus provided with IP models, the stylus does not need to touch the display. It operates when the stylus is hovering within an inch or so of the display.

Using the on-screen keyboard

While using your computer, you can enter text using the computer operating system's built-in on-screen keyboard. The on-screen keyboard appears in an interactive window that you can move to a convenient location and tap keys to enter text at the location of the cursor. To use your operating system's on-screen keyboard:

NOTE:

Macintosh computers require that the operating system's on-screen keyboard is enabled first, before it can be recognized by the PolyVision driver.

1. Press the Keyboard button on the remote control.
2. Tap at the location where you want to move the cursor for entering text.
3. To enter text, tap keys on the on-screen keyboard.
4. To move the keyboard, drag the title bar to another location.
5. To close the keyboard, tap the "close" button at the upper corner of the window or press the Keyboard button on the remote control again.

Using dry-erase markers

The whiteboard sends writing and erasing data to your computer by detecting a single point of pressure. Whenever you write on the whiteboard, make sure there is only one point of contact at a time.

NOTE:

Use only the recommended markers and erasers. The whiteboard surface can be damaged by sharp objects, such as ballpoint pens and rulers. Scratches can cause permanent ink stains and data loss due to electrical malfunctions.

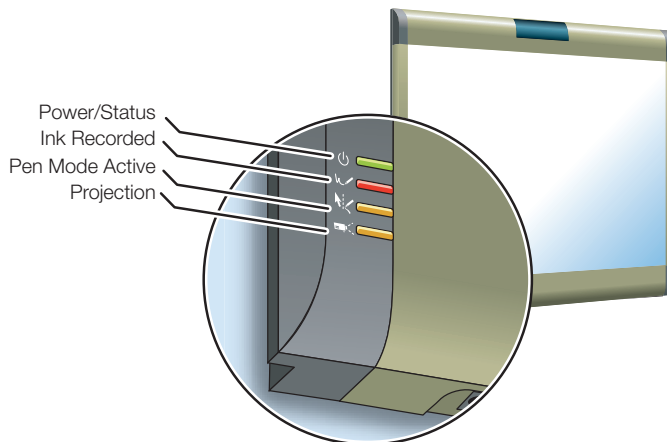
Use standard dry-erase markers to write on the WT and WTL whiteboard. To specify the color that is recorded in the software for printing and saving, press the corresponding ink color button on the remote control.

To write on the board so you can save or print:

1. Choose a dry-erase marker.
2. Press one of the ink color buttons on the remote control to specify the color that is recorded in the software. A selected ink color (or eraser) stays in effect until you select a different one.
3. Write on the board.

When you choose an ink color and write, sounds from the board provide audible feedback to confirm that the software is recording.

While you write, the red “Ink Recorded” LED glows to indicate that the computer is detecting your writing.



Erase the board using the large circular felt eraser provided. The battery-operated eraser sends infrared data to the computer through the whiteboard.

Writing in projection mode

In projection mode, the interactive whiteboard includes two types of writing that you can print and save:

- writing on the whiteboard using dry-erase markers

- annotating the projected computer screen using your finger for computer-projected “ink.”

NOTE:

For IP models, you use the stylus for all writing.

While in projection mode, you can annotate the projected computer screen by writing, highlighting, and erasing on the whiteboard. This type of writing is part of the projected image, not physical ink.

To annotate the projected computer image:

1. Press the “Cursor | Pen” button on the remote control. The cursor changes from an arrow to a pen.



2. Write over the projected computer image using your finger.

To change the pen style:

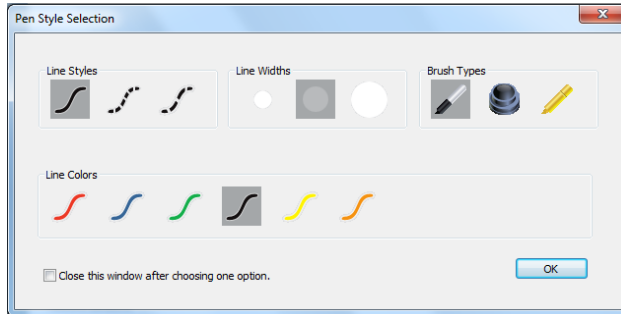
- Press the black, red, blue, or green Ink Color button on the remote control.
- To choose from a variety of pen, highlighter, and eraser styles, press the Pen Style button on the remote control. Tap an option in the palette. The new pen style appears in future writing. (Refer to "Changing the pen style" on page 29.)

NOTE:

The PolyVision driver provides the option to change the function of the Red icon to two other alternative functions: spotlight or reveal. These options are available in Projection mode only. To change the Red control icon, refer to "Spotlight and reveal options" on page 31.

Changing the pen style

The pen style palette provides a selection of pen, eraser and highlighter styles.



To choose a pen, eraser, or highlighter from the pen palette:

1. Press the Pen Palette button on the remote control.
2. Tap an option to select it.
3. Begin writing on the whiteboard.

You can drag the palette window to any convenient location.

To close the pen palette:

- Click “OK.” Alternatively, click to add a check mark beside “Close this window after choosing one option” so the window closes automatically after your click a pen style option.

Erasing in projection mode

To erase writing in projection mode, you have these choices:

- Erase with the circular battery-operated eraser provided with the WT and WTL whiteboard.
- Press the Pen Style button on the remote control, tap an eraser option in the palette, and then erase with your finger.
- Press the Erase All button on the remote control to erase all writing from the computer memory and start fresh.

Writing and erasing with IP models

The Walk-and-Talk Interactive Panel (IP) sends data to your computer by detecting the battery-operated stylus as you write or erase across the panel. The stylus can act as a mouse to control the computer cursor or as a pen to mark-up the projected computer screen. Do not use dry-erase markers with these products.

To toggle between writing and cursor control:

- Press the Cursor/Pen button on the remote control.

To specify the color for writing:

1. Press the Pen Style button on the remote control. A palette of options appears in the display screen.
2. Tap one of the pen styles in the palette options. The palette closes.

To erase:

1. Press the Pen Style button on the remote control. A palette of options appears in the display screen.
2. Tap the small or large eraser. The palette closes.
3. Erase using the stylus.

To erase everything you have written or drawn:

- Press the Erase All button on the remote control.

A selected pen color (or eraser) stays in effect until you select a different one.

Printing and saving

The PolyVision driver enables Walk-and-Talk interactive products to capture an image of the whiteboard by printing or saving it as a file on your computer. Everything you see on the whiteboard is captured in the snapshot.

To print:

- Press Print on the remote control.

Walk-and-Talk sends the image to the default printer connected to your computer.

To save a snapshot in a graphics file on your computer:

- Press the Save button on the remote control.

A snapshot file is added to the computer in the "My Documents" folder (Windows) or "Documents" folder (Macintosh or Linux). You can change the default file type and destination. (Refer to "Save options" on page 36.)

Spotlight and reveal options

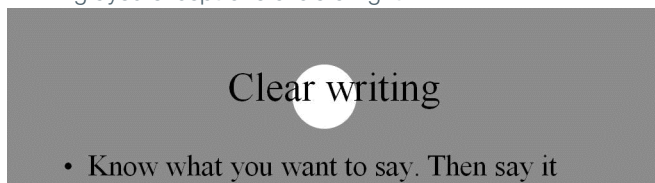
The Red ink color button on your remote control has three possible functions which you can configure:

- red pen color for writing
- spotlight
- reveal

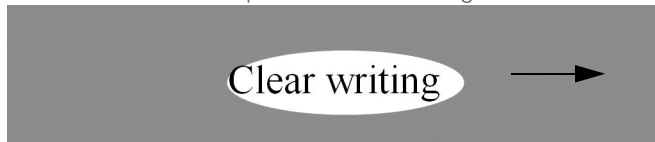
Spotlighting your work

To use the spotlight:

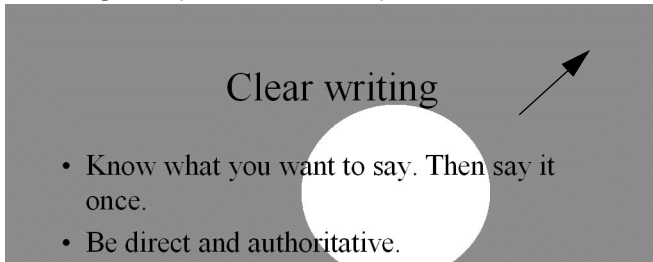
1. Configure the red pen color for the spotlight option. (Refer to "Projection options" on page 39.)
2. Press the Red Ink remote control button. The screen becomes grayed except one circle of light.



3. Drag the spotlight around the screen to focus attention on that portion of the screen.
4. To re-shape the spotlight into an ellipse, drag the circle from any of the four cardinal points around the edge of the circle.



5. To enlarge or shrink the circle, drag it from any point around the edge except the four cardinal points.



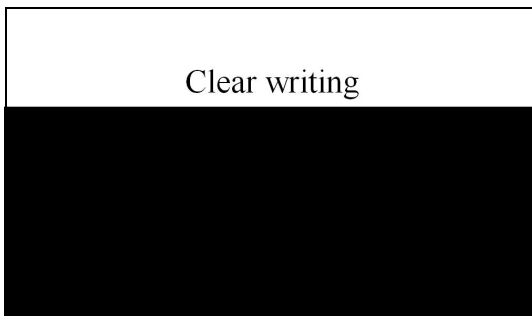
To remove the spotlight:

- Press the Red Ink remote control button again.

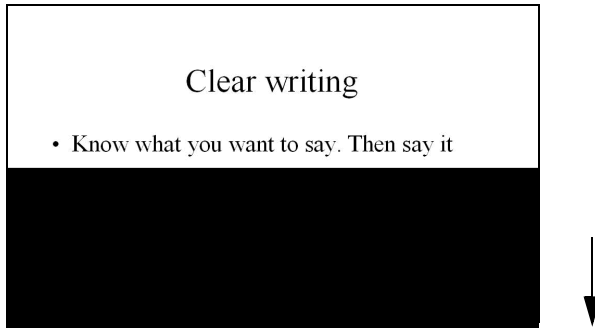
Revealing your work

To use the reveal tool:

1. Configure the red pen color for the reveal option. (Refer to "Projection options" on page 39.)
2. Press the Red Ink remote control button. The screen becomes black except one strip at the top.



3. Drag the strip up, down, left or right to reveal more of the screen.



To reveal the entire screen and continue your presentation:

- Press the Red Ink remote control button again.

Opening a blank window for writing

If you prefer to write on a blank window rather than writing over the projected computer desktop, you can display up to four additional blank windows for writing.

To display a blank window for writing:

- Choose the Previous (left) arrow. You can choose Previous up to four times to open up to four blank windows.

To return to the projected computer desktop:

- Choose the Next (right) arrow until the computer desktop appears.

The PolyVision driver

The PolyVision driver is always available and running in the background after you install it on your computer.

Configuring PolyVision driver options

The PolyVision driver is ready to use as soon as it is installed. You can change the default options at any time.

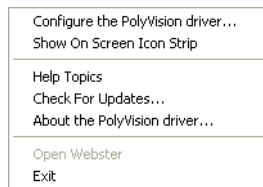
To configure PolyVision driver options:

1. Click the PolyVision driver icon in the system tray (Windows or Linux) or menu extras (Macintosh).



PolyVision driver icon

2. The PolyVision driver menu appears.



3. Choose "Configure the PolyVision driver."

To view configuration options, click an item along the left edge of the window. Each window includes:

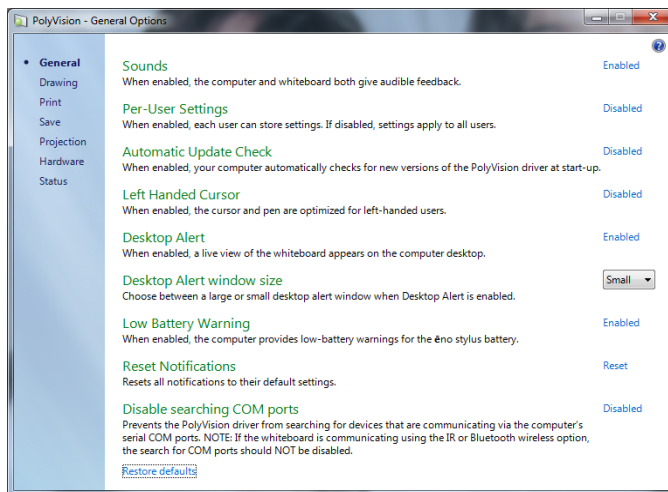
"?" icon: Click to view help information.

"Restore Defaults": Click "Restore Defaults" to restore factory defaults.

General options

To configure general options:

- Click “General”. You see the following options:



“Sounds”: Enable or disable sounds from your computer or PolyVision product that indicate system status.

“Per-User Settings”: When enabled, this option saves settings for individual users. When disabled, settings apply to all users.

“Automatic Update Check”: Enable or disable the PolyVision driver to connect automatically to the PolyVision web site to check for driver updates.

“Left Handed Cursor”: Enable or disable the left-handed cursor.

“Desktop Alert”: Enable this option to see an alert window appear on your computer desktop while you write or draw on the PolyVision product. The alert window shows what you are drawing. As soon as you stop drawing, the window fades off.

“Desktop Alert window size”: Choose between a large or small desktop alert window when Desktop Alert is enabled.

“Low Battery Warning”: Enable the PolyVision driver to display a warning on your computer desktop when the éno stylus battery is getting low.

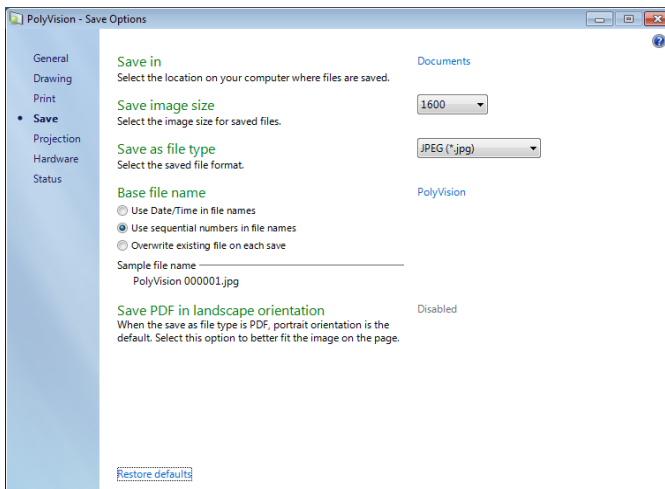
“Reset Notifications”: If a user disables Print and Save notifications, click this option to reset and enable them again.

“Disable searching COM ports”: Prevents the PolyVision driver from searching for devices that are communicating via the computer's serial COM ports. NOTE: If the whiteboard is communicating using the IR or Bluetooth wireless option, the search for COM ports should NOT be disabled.

Save options

To configure Save options:

- Click “Save”. You see these options:



“Save in”: Specify the directory where snapshot files are saved. By default, snapshot files are saved to your “My Documents” (Windows) or “Documents” (Macintosh or Linux) folder.

“Save image size”: Specify the width (in pixels) of the image that is created when you save. (The height is automatically determined by your whiteboard size.) Options include 2560, 2048, 1600, 1280, 1024, 800, and “Monitor Resolution” which saves images set to the width of your monitor.

“Save as file type”: Specify the format of the snapshot file saved on your computer when you save an image. Options include PDF, JPEG, TIFF,

PNG, or BMP. In Windows, you can also save as GIF. On a Macintosh, you can also save as PICT, Photoshop, SGI, TGA, and Quicktime Image formats. By default, snapshot files are saved in JPG format (Windows) or PDF (Macintosh).

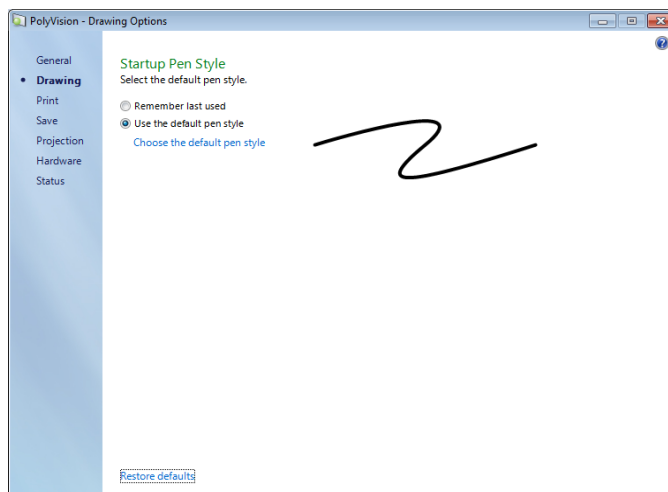
“Base file name”: Specify the name of the snapshot files saved on your computer when you save an image from your PolyVision product. Click the existing base file name to enter a new file name. Check boxes enable you to add a date/time stamp to the base filename, to add a sequential number to the base file name, and to overwrite the existing file each time you save.

“Save PDF in landscape mode”: Enable to save PDF files in landscape orientation.

Draw options

To configure pen options:

- Click “Drawing.” You see these options:



“Startup Pen Style”: Specify the pen style that is used when the PolyVision driver launches on your computer.

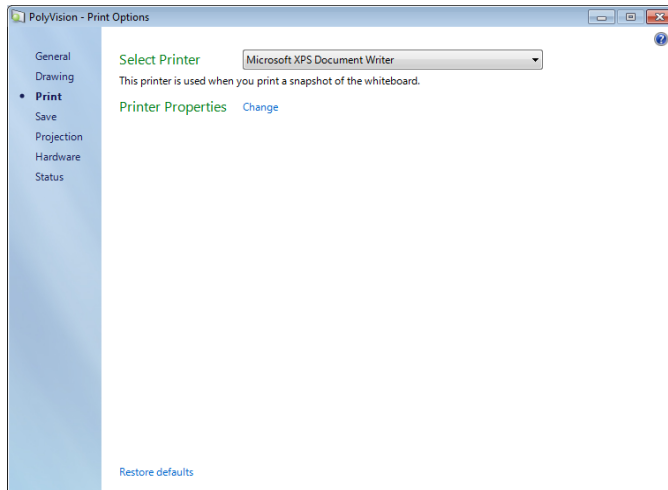
“Remember last used”: The PolyVision driver remembers the last active pen style and uses it when the program is next launched.

“Use the default pen style”: The factory default pen style is a medium black line. Click “Select the default pen style” to select a new default pen style.

Print options

To configure print options:

- Click “Print.” You see these options:

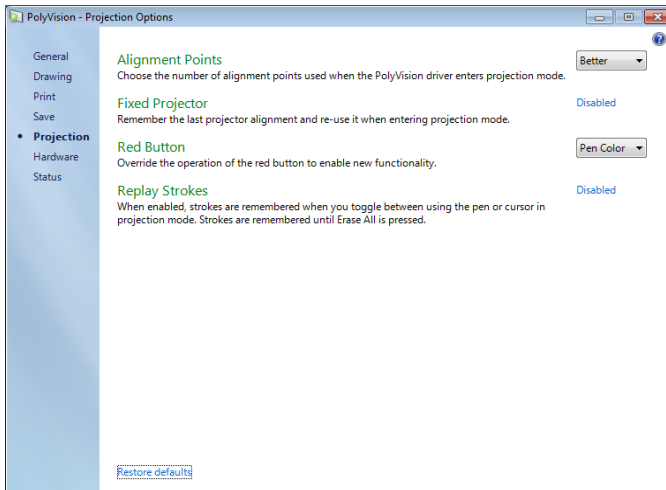


“Select Printer”: Specify the printer used when you print a snapshot. The drop-down list includes printers currently installed on your computer. You can click “Change” to specify options for the selected printer. By default, the computer default printer is used.

Projection options

To configure projection alignment options that apply when your device enters projection mode:

- Click “Projection.” You see these options:



“Alignment Points”: Choose between three levels of projection alignment: good, better, and best. The more points you choose, the more accurately the cursor will be controlled from the whiteboard in projection mode.

“Fixed projector”: If your whiteboard and projector remain in the same positions, check this box to use the same projection alignment each time. No alignment screen displays when you enter projection mode if this box is checked.

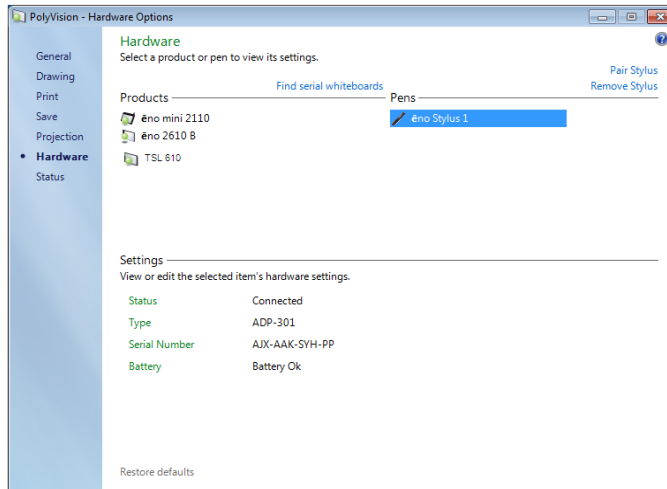
“Red Button”: Choose an option from the drop-down list to change the function of the Red ink color. Options are: “Pen Color” for drawing with red ink; “Spotlight” for focusing attention on one part of the screen using a spotlight that you can drag around the screen; or “Reveal” for gradually revealing screen contents from top to bottom. Refer to "Spotlight and reveal options" on page 31.

“Replay Strokes”: When enabled, pen strokes are remembered when you switch from pen mode to cursor mode, and back to pen mode. Pen strokes accumulate until you erase all.

Hardware options

To view the PolyVision hardware products communicating with the computer:

- Click “Hardware.”



To view and change settings for a PolyVision product:

- Select a product or pen to view or edit its settings in the lower section of the window. Settings that you can edit are highlighted.

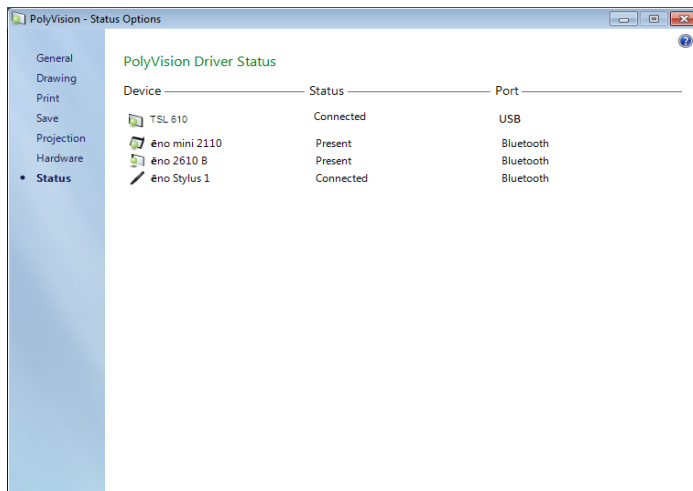
“Pair Stylus”: Click to initiate automatic Bluetooth pairing between the computer and an *ēno* stylus. If the stylus is listed, it is already paired with the computer.

“Remove Stylus”: Click to stop Bluetooth communication between a stylus and the computer it is paired with. For example, if you want to use the stylus with another computer in the same room, first click “remove Stylus” to unpair the stylus from the original computer, then pair it with the computer you want to use.

“Find serial whiteboard”: If your device is not listed, click “Find serial whiteboard.” If your device is still not listed, there is a problem with your Bluetooth registration.

Status of the PolyVision driver

The Status option provides a live view of all PolyVision products communicating with the computer and their current status.



PolyVision products shown in gray are installed and communicating with the computer, but are inactive or in a “sleep” mode. The status information is updated when a change occurs.

Choosing alignment accuracy

The alignment between your projector and the PolyVision product is important. PolyVision offers three levels of alignment: good, better, best. The default is “better” alignment.

You might need to use more or fewer alignment points to improve the correspondence between the position of the computer cursor and the point of contact when you tap the PolyVision product. (Some video projectors, for instance, do not produce a linear display when projection with keystone correction is used.)

To change the number of alignment points:

1. Click the PolyVision driver icon in your computer system menu bar or system tray (refer to “Configuring PolyVision driver options” on page 34).

2. Click "Projection."
3. Choose the alignment type from the drop-down list.

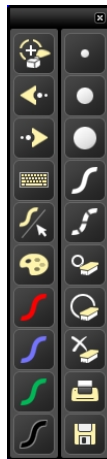
Proceed as usual to enter projection mode or to re-align while in projection mode. Follow the alignment instructions that are projected from the computer on your PolyVision product.

Using on-screen tools

You can operate your interactive product using on-screen tools that appear in a window you can drag to a convenient location while you work.

To use on-screen tools:

1. Click the Polyvision driver icon in the system tray (Window or Linux) or menu extras (Macintosh). The PolyVision driver menu appears.
2. Choose "Show On Screen Icon Strip" from the menu to toggle on and off the display of a functional on-screen tool window.



Getting help

Choose “Help Topics” from the PolyVision driver menu for information about using PolyVision products.

Checking for updates

PolyVision driver updates are available via the Internet. Registered users receive notice when updates are available. The PolyVision driver can check for updates automatically (refer to "General options" on page 35) or you can check for updates at any time.

To update the PolyVision driver:

1. Click the PolyVision driver icon in the system tray (Windows or Linux) or menu extras (Macintosh). The PolyVision driver menu appears.
2. Choose "Check for Updates" from the menu when your computer is connected to the Internet. A system check reveals whether the version number available on the web agrees with the version installed on your system. If the version numbers are not the same, you can choose to initiate the download and automatic installation of the update. You can also enable automatic updates (refer to "General options" on page 35).

Exiting the PolyVision driver

To shut down the PolyVision driver:

1. Click the PolyVision driver icon in the system tray (Windows or Linux) or menu extras (Macintosh). The PolyVision driver menu appears.
2. Choose "Exit" (Windows or Linux) or "Quit" (Macintosh) from the menu. The PolyVision driver closes.

To resume:

- **Windows:** choose "PolyVision driver" from the Start/Programs/PolyVision menu.
- **Linux:** choose "PolyVision" and "PolyVision driver" from the Applications menu.
- **Macintosh:** double-click "PolyVision driver" in the Applications folder.

To uninstall the PolyVision driver in Windows

To uninstall the PolyVision driver in Windows:

1. Click "Start" at the lower left corner of the task bar.
2. Choose "All Programs" from the menu.

3. Choose “PolyVision driver” from the menu.
4. Choose “Remove the PolyVision driver.”

To uninstall the PolyVision driver on a Macintosh

To uninstall the PolyVision driver using a Macintosh:

1. Navigate to “Applications” and then to “PolyVision.”
2. Launch “PolyVision driver Uninstaller.app.”
3. Follow the prompts as directed.

To uninstall the PolyVision driver using Linux

To uninstall the PolyVision driver using Linux:

1. In a terminal window, enter:
`sudo /usr/bin/PolyVision/PolyVisionDriver/uninstall`
2. Enter your root password.
3. Click “Yes.” The **Uninstall Complete** dialog appears.

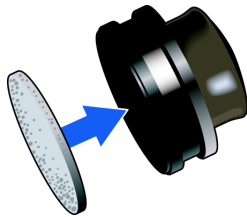
Care and maintenance

Walk-and-Talk maintenance

Replacing the Walk-and-Talk eraser pad

To replace eraser pads:

1. Peel off the old eraser pad.
2. Remove backing from the self-adhesive replacement pad.
3. Position the replacement pad over the eraser and press firmly.



Cleaning the Walk-and-Talk whiteboard

We recommend an initial cleaning of the board to remove any residue left behind during manufacture.

1. For the initial cleaning, wipe your board with a clean cloth moistened by a commercially available whiteboard cleaner.
2. Rinse with clear water to avoid future smearing. This step is simple but **very important**.
3. Wipe dry with a clean cloth.

NOTE:

Do not let water seep into the sensitive Walk-and-Talk whiteboard electronics. Your warranty does not cover damage caused by liquids.

Caring for dry-erase markers and erasers

- Cover the markers when not in use.
- Store the markers horizontally.
- Rub the eraser against a towel to remove ink residues. If excessive ink buildup occurs, contact PolyVision for a replacement. Call 1.800.620.7659 (POLY) in the USA, 1.678.542.3100 outside the USA, or +32 (0)89 32 31 30 in Europe, or go to:

www.polyvision.com

How to obtain replacement parts

Replacement parts are available directly from PolyVision. Call 1.800.620.7659 (POLY) in the USA, 678.542.3100 from elsewhere in North America, or +32 (0)89 32 31 30 in Europe. You can also send e-mail to info@polyvision.com.

Summer maintenance

- Gather all items that are loose and can be easily disconnected from the board and/or computer. Store all items in a safe and secure place. (For example, the USB cable, wireless receivers, USB hubs, stylus, and eraser.)
- Tape a sign to top frame of any interactive whiteboards to say:
 - This board is not a marker board.
 - Do not wash the board. Clean ONLY with a soft dampened cloth.
- Back up your work. Any files you have created or images stored on your computer should be saved onto disk, USB drive, or network server. Coordinate storage of data with your IT Department.

When preparing for Fall classes:

- Test this product early in the Fall preparation process. Connect the computer to the Internet so that the PolyVision driver can acquire automatic software updates that may have been issued during the Summer break.
- If you are unable to acquire any released software updates, please request your IT Department to provide you with support early in the back-to-school process.

- Testing the product well before it is needed assures that there is time for any technical support you may need as well as time for you to try out new practices.
- Toll free technical support: 1.800.620.7659

Technical support

If reviewing the above sections fails to resolve your hardware or driver problem, contact PolyVision USA Technical Support:

- Phone: 1.800.620.7659 (POLY), 678.542.3100
24-hour support Monday through Friday.
- E-mail: support@polyvision.com
- Internet: www.polyvision.com

Or, outside the USA contact PolyVision Europe/Asia Technical Support:

- Phone: +32 (0)89 32 31 30
- E-mail: business.center@polyvision.com
- Internet: www.polyvision.com

FCC compliance

This equipment has been tested and found to comply with the limits for a Class A digital device, pursuant to Part 15 of the FCC Rules. These limits are designed to provide reasonable protection against harmful interference when the equipment is operated in a commercial environment. This equipment generates, uses, and can radiate radio frequency energy and, if not installed and used in accordance with the instruction manual, may cause harmful interference to radio communications. Operation of this equipment in a residential area is likely to cause harmful interference in which case the user will be required to correct the interference at his own expense. Changes or modifications not expressly approved by the party responsible for compliance could void the user's authority to operate the equipment.

Warranty

WHAT IS COVERED

WT and WTL interactive whiteboards

PolyVision Corporation warrants to the original consumer or other end-user purchaser that this product is free from defects in material and workmanship for a period of two years from the date of purchase and for five years if the product is registered through the PolyVision product registration web page. During the warranty period, and upon proof of purchase, the product will be repaired or replaced (with the same or similar model) at PolyVision's option, without charge for either parts or repair labor. Shipping costs will apply. Please keep your original sales receipt or delivery invoice for proof of purchase. Without proof of the purchase date, your warranty will be defined as beginning on the date of manufacture, which is recorded by serial number at the factory. This warranty applies only to the first end-user purchaser and only when the product is used in a country for which it is labeled for sale. Some factory-reconditioned parts may be used in the assembly of this whiteboard.

Walk-and-Talk Interactive Panel (IP17):

PolyVision Corporation warrants to the original consumer or other end-user purchaser that this product is free from defects in material and workmanship for a period of two years from the date of purchase. During the warranty period, and upon proof of purchase, the product will be repaired or replaced (with the same or similar model) at PolyVision's option, without charge for either parts or repair labor. Shipping costs will apply. Please keep your original sales receipt or delivery invoice for proof of purchase. Without proof of the purchase date, your warranty will be defined as beginning on the date of manufacture, which is recorded by serial number at the factory. This warranty applies only to the first end-user purchaser and only when the product is used in a country for which it is labeled for sale. Some factory-reconditioned parts may be used in the assembly of this whiteboard.

WHAT IS NOT COVERED

1. Any product that is sold or used outside of North America and Europe unless the product was specifically labeled for sale in that country.
2. Any product on which the serial number has been defaced, modified, or removed.
3. Damage, deterioration, or malfunction resulting from, but not limited to:
 - Accident, misuse, abuse, neglect, fire, water, lightning or other acts of nature, unauthorized product modification, or failure to follow instructions supplied with the product.
 - Use of unintended writing implements such as (but not limited to) ball point pens, pencils, fountain pens, or non-dry-erase markers.
 - Use of non-approved cleaning materials or solvents.

- Repair or attempted repair by anyone not authorized by PolyVision.
 - Any damage incurred in shipping.
 - Removal or installation of the product.
 - Any other cause that does not relate to a product defect.
4. Cartons, carrying cases, pens, external cabinets, easels, or any accessories used in connection with the product.
 5. Removal and/or installation charges.
 6. Shipping charges to and from our factory or authorized repair depot.

HOW TO GET WARRANTY SERVICE

If you experience a problem with this product, contact your local dealer or PolyVision Product Support (800.620.POLY in the USA, or +32 (0)89 32 31 30 in Europe) to resolve the problem. If the product is diagnosed as being defective, return the product to the original place of purchase. If you are directed to return the product directly to PolyVision, you must obtain a Return Materials Authorization (RMA) number from PolyVision. All products returned to PolyVision must have an RMA number assigned, regardless of reason for return. The RMA number must be clearly marked on the outside of the shipping carton; any unit without an RMA number will be returned to the sender.

LIMITATION OF DAMAGES AND IMPLIED WARRANTIES

POLYVISION WARRANTS THAT THE PRODUCT WILL OPERATE SUBSTANTIALLY IN CONFORMITY TO THE POLYVISION DOCUMENTATION AND PUBLISHED SPECIFICATIONS DURING THE WARRANTY PERIOD, PROVIDED IT IS USED IN ACCORDANCE WITH POLYVISION'S USER INSTRUCTIONS. POLYVISION'S SOLE AND EXCLUSIVE LIABILITY, AND YOUR EXCLUSIVE REMEDY, FOR ANY BREACH OF THIS WARRANTY IS THAT, IF THE BREACH IS REPORTED TO POLYVISION IN WRITING WITHIN THE WARRANTY PERIOD, POLYVISION WILL CORRECT THE NONCONFORMITY, EITHER BY CORRECTING THE PRODUCT OR (WHERE APPROPRIATE) DOCUMENTATION; REPLACING THE PRODUCT; OR, WHERE POLYVISION DETERMINES THAT CORRECTION OR REPLACEMENT IS NOT FEASIBLE, REFUNDING THE FEE ACTUALLY PAID FOR THE PRODUCT. NO OTHER REMEDY SHALL BE AVAILABLE TO YOU. EXCEPT AS EXPRESSLY SET FORTH HEREIN, POLYVISION MAKES NO WARRANTY OF ANY KIND, EXPRESSED OR IMPLIED. POLYVISION DISCLAIMS ANY IMPLIED WARRANTY OF MERCHANTABILITY OR FITNESS FOR A PARTICULAR PURPOSE. POLYVISION SHALL HAVE NO LIABILITY BEYOND THE OBLIGATIONS SET FORTH ABOVE. IN NO EVENT SHALL POLYVISION BE LIABLE FOR ANY INDIRECT DAMAGES, WHETHER INCIDENTAL, CONSEQUENTIAL, OR OTHERWISE (AND EXPRESSLY INCLUDING LOST PROFITS AND LOSS OF DATA) OR FOR ANY DAMAGES IN EXCESS OF THE PURCHASE PRICE OF THIS PRODUCT UNDER THIS OR RELATED AGREEMENTS, WHICH DAMAGES ARISE OUT OF THE USE OF THE HARDWARE, IRRESPECTIVE OF WHETHER POLYVISION SHALL HAVE BEEN INFORMED OF THE POSSIBILITY OF SUCH DAMAGES AND IRRESPECTIVE OF THE CAUSE OF DAMAGE, INCLUDING NEGLIGENCE. SOME STATES OR

COUNTRIES RESTRICT THE RIGHT TO EXCLUDE CERTAIN WARRANTIES, THEREFORE, THE ABOVE EXCLUSIONS MAY NOT APPLY TO YOU.

HOW STATE LAW RELATES TO THE WARRANTY

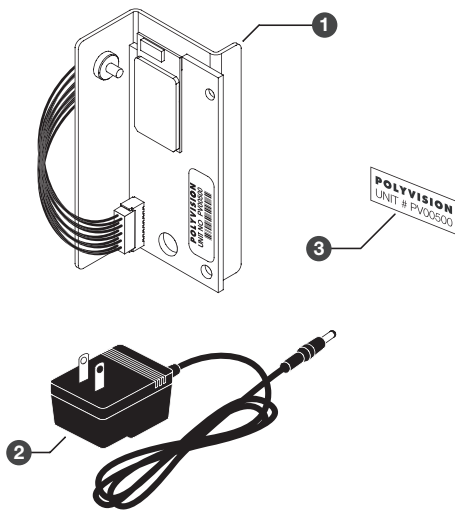
In the USA, this warranty gives you specific legal rights, and you may also have other rights, which vary from state to state. PolyVision Corporation products are warranted in accordance with the terms of the applicable PolyVision Corporation limited warranty. Product performance is affected by system configuration. Software, the application, customer data, and operator control of products are considered to be compatible with many systems. The specific suitability of a product for a specific purpose or application must be determined by the customer and is not warranted by PolyVision Corporation.

Appendix 1: Installing the Walk-and-Talk BT option

Installing the Walk-and-Talk Bluetooth (BT) adapter

The Bluetooth adapter kit includes the following:

1. WT Bluetooth adapter
2. Walk-and-Talk Power Supply
3. WT BT label

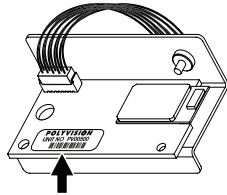


NOTE:

Your computer must include Bluetooth capability.

To install the WT Bluetooth adapter:

1. Write down the number printed on the adapter's label (PV 00500, for example). You will need that number in a later step.



WARNING

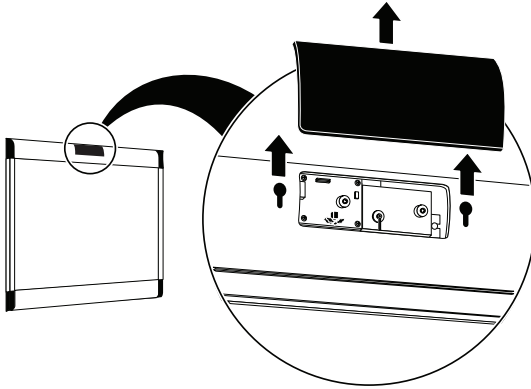
The adapter is sensitive to electrostatic discharge. To prevent possible damage to the adapter, touch a grounded object such as the screw on a wall plate before handling the card.

2. Unplug power from the whiteboard, if necessary.
3. Disconnect the USB cable from the whiteboard and from your computer, and store the cable in a safe place.

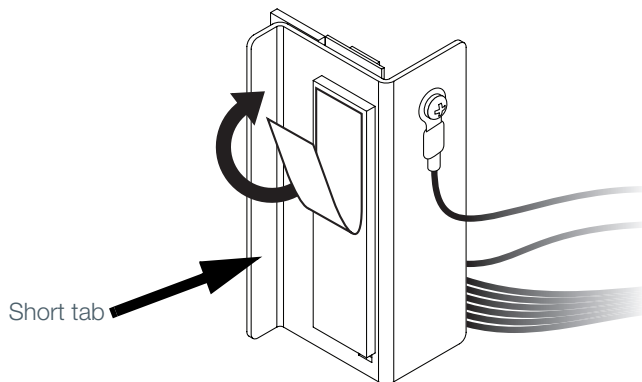
4. Open the whiteboard header by sliding the header compartment cover up towards the ceiling and lifting it out.

NOTE:

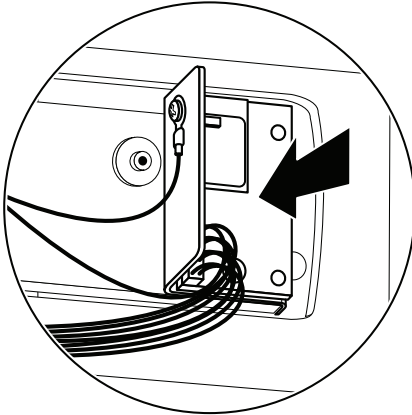
It may require some force to remove the cover. Use both hands but do NOT pry the cover or use any tools, as you may scratch the whiteboard or cover.



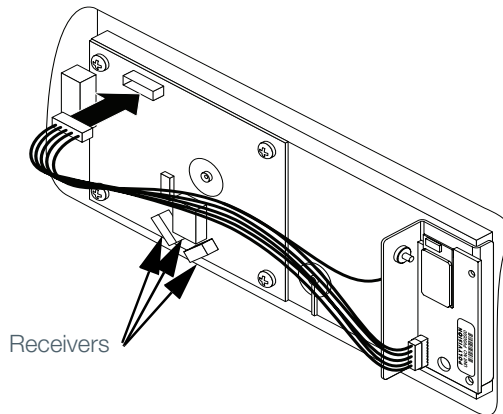
5. Remove the release liner from the adhesive strip on the back of the adapter.



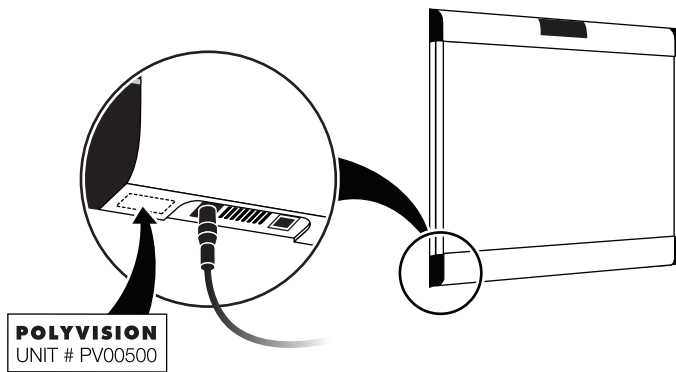
6. Position the adapter with its short tab aligned to the right edge of the plastic base as shown, then press down firmly.



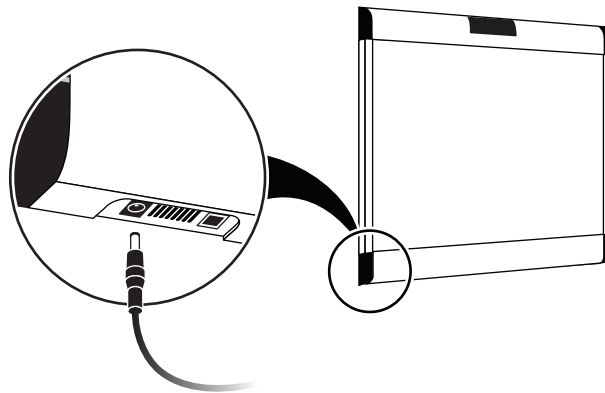
7. Connect the WT Bluetooth adapter cable to the IR receiver circuit board, assuring that the cable is routed above the receivers, as shown.



8. Apply the WT BT label to the whiteboard footer near the power connector, as shown below.



9. Replace the whiteboard header compartment cover.
10. Connect the Walk-and-Talk whiteboard power adapter cord to the whiteboard and to a power outlet.



11. Finish installing the Walk-and-Talk Series Interactive Whiteboard.
12. Register the wireless communication link between your computer and the whiteboard as described in "Appendix 2: Using the WT BT (Bluetooth) option" on page 58.
13. Test the wireless communication link as described in "Confirming Bluetooth registration" on page 69.

Appendix 2: Using the WT BT (Bluetooth) option

The Bluetooth® adapter from PolyVision® provides wireless Bluetooth communication between your computer and PolyVision interactive whiteboard.

For Bluetooth wireless operation of a PolyVision interactive whiteboard, your computer must have Bluetooth capability and you must register the whiteboard's Bluetooth connection with your computer.

NOTE:

Instructions below describe registering the whiteboard's Bluetooth connection with your computer using Bluetooth software provided with Windows, Linux and Macintosh operating systems. If you installed Bluetooth capability on your computer that was made by another company, the menus and Wizards may differ. Be sure to connect any needed Bluetooth adapter to your computer and install the adapter software on your computer before you connect the Bluetooth adapter to the whiteboard and apply power to the whiteboard.

Registering the whiteboard in Windows

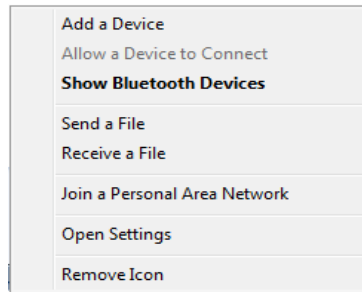
For each whiteboard that you want to share wireless Bluetooth communication with your computer, you must register the whiteboard with your computer.

To register a whiteboard for wireless communication with a Windows-based PC:

1. Right click the Bluetooth icon in your Windows taskbar.



You see the following menu. (Remember, if you use Bluetooth software not provided by Windows, your menu may differ.)

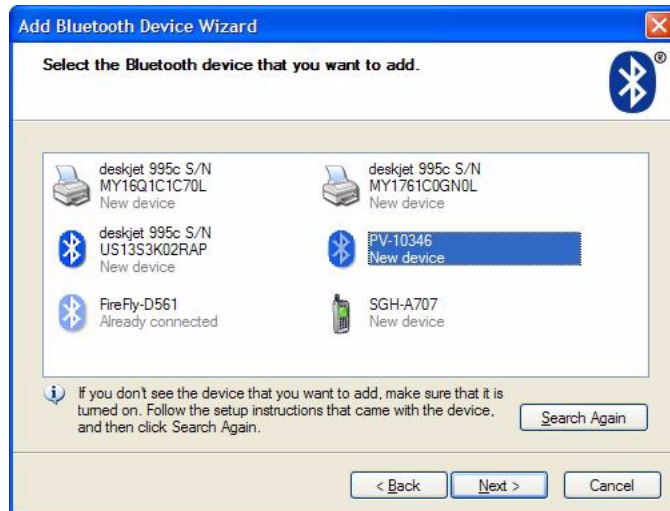


2. Choose “Add a Bluetooth Device” from the menu. You see the dialog box shown below.

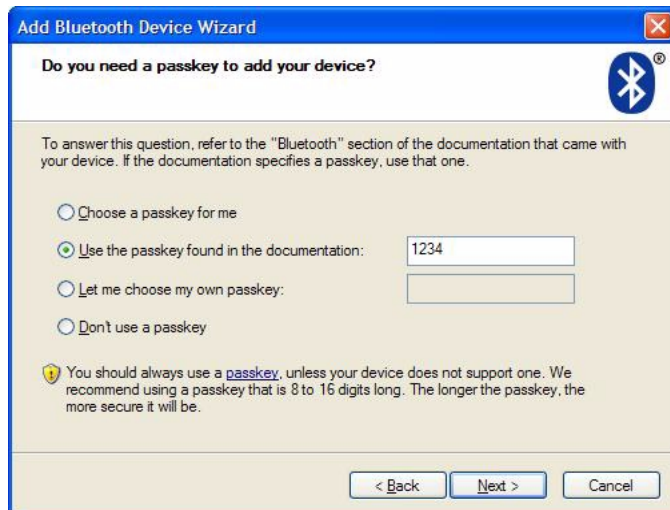


3. Make sure that the whiteboard Bluetooth adapter is connected and the whiteboard is powered on.
4. Check “My device is set up and ready to be found.”

- Click “Next.” You see the dialog box shown below.



- Select your whiteboard from the list and click “Next.” You see the dialog box shown below.



- Click the radio button beside “Use the passkey found in the documentation” and enter “1234” as shown.

8. Click "Next" and wait for the software to connect to the whiteboard.
9. The software automatically finishes establishing the connection and tells you the COM port where you can expect to find the whiteboard connection. In the example below, the COM port is COM36.

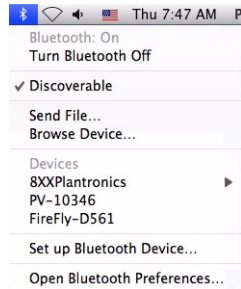


10. Your whiteboard is now accessible via the Bluetooth connection.
11. This Bluetooth communication link appears in the list of active connections on your computer and automatically reconnects in the future.
12. To check or change this Bluetooth connection, choose "Open Bluetooth Settings" from the menu that appears when you right click the Bluetooth icon in your taskbar.
13. If the software asks you for a passkey, the factory default is "1234."
14. Skip to "Confirming Bluetooth registration" on page 69.

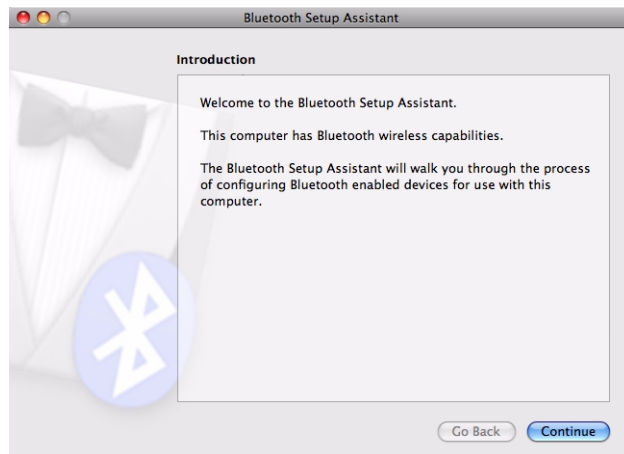
Registering the whiteboard on a Macintosh

For each whiteboard that you want to share wireless Bluetooth communication with your computer, you must register the whiteboard with your computer.

1. To see the Bluetooth menu, click the Bluetooth icon in the system menu.



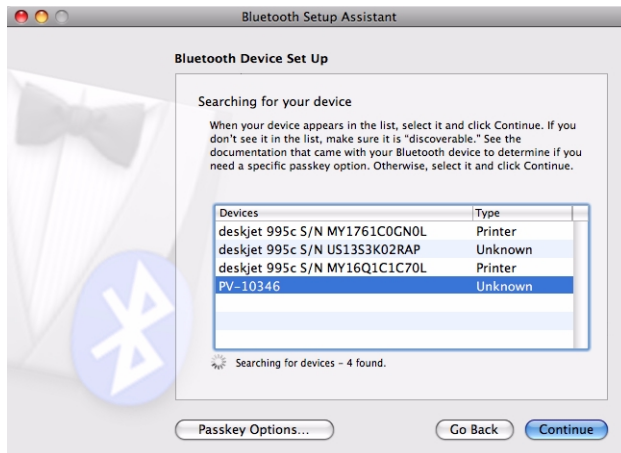
2. Select "Set up Bluetooth Device." The Bluetooth Setup Assistant appears.



- Click "Continue." You see the Select Device Type dialog.



- Select "Any device."
- Click "Continue." A list of discoverable Bluetooth devices appears.

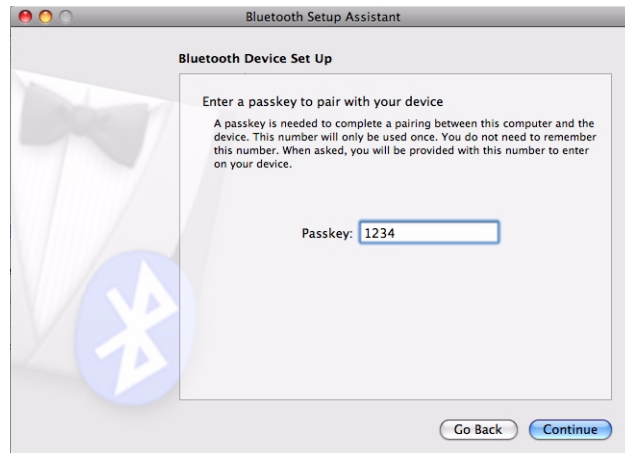


- Select the Polyvision Bluetooth-Serial adapter identified by a number in the form PV-10346, for example.

- Click "Continue." The system gathers information about your adapter.



- Click "Continue" when the setup assistant has completed gathering information about your device. You are prompted to enter a passkey.



- Enter "1234."

10. Click "Continue." You see the Bluetooth Device Setup window. No services are available.



11. Click "Continue." You see the Conclusion window.

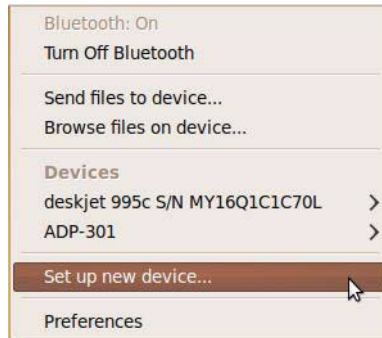


12. Click "Quit."

Registering the whiteboard using Linux

For each whiteboard that you want to share wireless Bluetooth communication with your computer, you must register the whiteboard with your computer.

1. To see the Bluetooth menu, click the Bluetooth icon in the system menu.



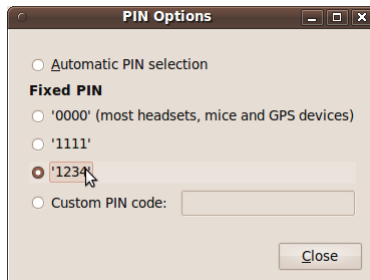
2. Select "Set up new device." You see the Bluetooth New Device Setup Introduction dialog.



3. Select “Forward.” A list of discoverable Bluetooth devices appears.



4. Select the PolyVision Bluetooth-Serial adapter identified by a number in the form PV-11083, for example.
5. Click “PIN options.”

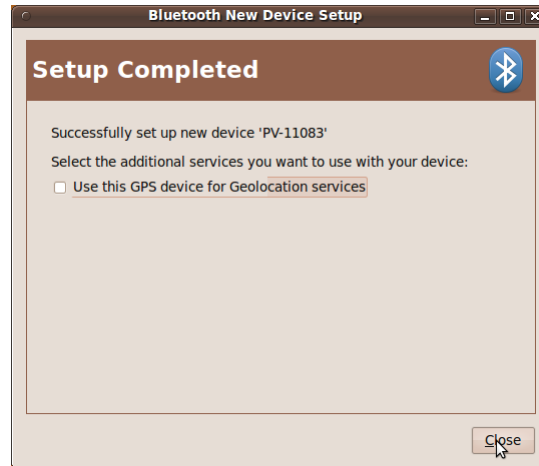


6. Click the “1234” radio button.

7. Click “Close.” Device setup continues automatically.



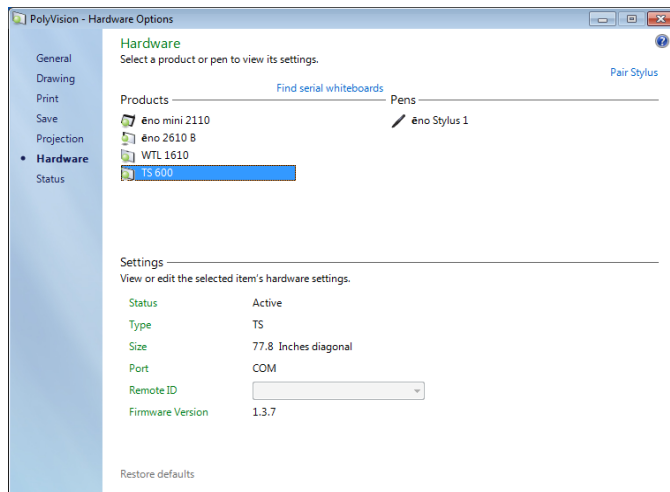
8. When setup is completed, click “Close.”



Confirming Bluetooth registration

To confirm wireless communication between your computer and the whiteboard:

1. Click the PolyVision driver icon in your system tray (Windows or Linux) or menu extras (Macintosh). You see the PolyVision driver menu.
2. Choose “Configure the PolyVision driver” from the menu.
3. Click the “Hardware” tab. Your Bluetooth device appears in the list using an identification number in the form “PV 10346” for example.



4. Some whiteboards may not be listed. If your device is not listed, click “Find Serial Whiteboard.” If your device is still not listed, there is a problem with your Bluetooth registration.
5. Click “OK” to close.
6. Confirm that the whiteboard and your computer are communicating by writing on the board saving a sample file. Check the file in your “My Documents” (Windows or Linux) or “Documents” (Macintosh) folder.

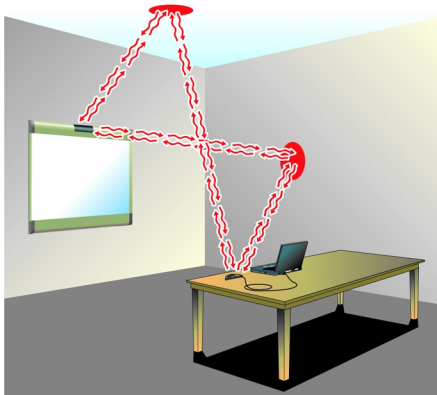
Appendix 3: Using Walk-and-Talk Wireless (IR)

The Walk-and-Talk™ Wireless option provides infrared wireless communication between your interactive whiteboard (WT or WTL) and your computer.



Walk-and-Talk Wireless components replace the USB cable connection between your whiteboard and computer, giving you the freedom to position your computer up to 24 feet (7 m) away.

Infrared communication is designed to reflect from the ceiling and walls, enabling it to bounce over the heads of people writing on the board or sitting near the computer, so a direct line of sight between the board and the transmitter is not needed.



Hardware requirements:

- One serial port or one USB port and serial-to-USB adapter, available from PolyVision.
- Walk-and-Talk Wireless adapter installed in the Walk-and-Talk whiteboard. (Refer to the **PolyVision Installation and Operation Guide**.)

All Walk-and-Talk whiteboards, including Lightning models (WTL), require a power supply to work with Walk-and-Talk Wireless.

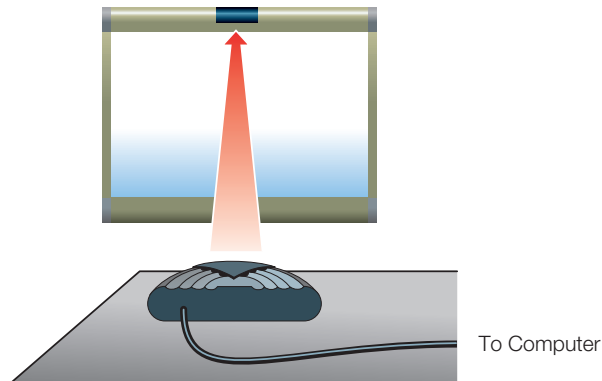
NOTE:

If you are using the wireless option with a WTL interactive whiteboard, be sure to connect the power supply provided with the wireless components to your board and to a power outlet.

The reflected infrared light can fill a standard size conference room or classroom to provide a very stable communication link between the board and your computer.

To establish a wireless communication link between the whiteboard and your computer:

1. Position the wireless transmitter so the curved edge faces the board.



2. Adjust the position of the transmitter until the LED on it turns green.
3. If you are using the wireless option with a serial-to-USB adapter, install the software for the adapter first.

If you are connecting the wireless transmitter to the serial (COM) port on your computer, not using a serial-to-USB adapter, configure the PolyVision driver to communicate with your computer serial port as

follows: click the PolyVision driver icon in your computer's system tray (Windows or Linux) or menu extras (Macintosh), choose "Configure PolyVision driver," click the "Hardware" tab and click the "Find Serial Whiteboards" button. The PolyVision driver searches all serial ports for attached boards and adds them to the list. Select your board and click OK.

4. Test the wireless communication link by standing in front of the wireless transmitter. If the LED on the transmitter turns from green to amber, try moving the transmitter or other features in the room until the LED remains green even if someone stands in front of it. (Rooms with high ceilings or with few walls may require line-of-sight to operate Walk-and-Talk Wireless.)

Index

A

alignment accuracy 42
 alignment options 39
 Alignment Points 39

B

battery installation
 eraser 8
 remote control 8
 Bluetooth
 confirm wireless communication 69
 ID number 53, 54, 57, 69
 registering 62
 testing the wireless connection 69
 Bluetooth RS232 adapter 53
 Bluetooth wireless option 58

C

cable connections 11
 Change drawing cursor for left handed person 35
 Check for Updates 43
 clicking using the remote control 18, 25
 components 4
 configuration options 34
 cursor control 25

D

desktop alert window
 enable or disable 35
 Desktop Alert window size 35
 double-clicking using the remote control 25
 Draw options 37
 driver
 menus and options 34
 updates 43
 dry-erase markers 26

E

Enable automatically check for updates 35
 Enable desktop alert window 35
 Enable Per User Settings 35
 eraser
 battery installation 8
 pad replacement 45
 erasing 29

Exit PolyVision driver 43

F

Find serial whiteboard 40
 Find Serial Whiteboards 72
 find snapshot on computer 36
 Find Whiteboard 69

G

get started
 projecting your computer 13

K

keyboard 26

L

LED status indicators 22
 Linux
 install PolyVision driver 11
 register the WT BT adapter 66
 system requirements 10
 uninstall the PolyVision driver 44
 Low Battery Warning 35

M

Make Sounds 35
 menu options 34
 mounting brackets
 installing 5

N

name of snapshot file 36

O

on-line registration 2
 options 34, 39
 file location 36
 file type 36
 printer used 38
 overview 1

P

Pair Stylus 40
 parts replacement 46
 pens
 care and maintenance 46
 Permanently-Mounted Projector 39

- PolyVision driver
 - checking for updates 43
 - exit 43
 - installation 10
 - start 43
 - system requirements 10
 - uninstall 43, 44
- print
 - options 38
- Print To 38
- projection alignment
 - number of alignment points 39
 - options 39
- projection mode 13
 - alignment (WT Lightning models) 13
 - alignment (WT models) 13
 - configuration options 39
 - exiting 14
 - getting set up 13
- R**
- Red color
 - configuration options 39
- register with PolyVision 2
- remote control
 - battery installation 8
 - buttons 17, 18
 - carrying with lanyards 16
 - configuring for multiple devices 20
 - Cursor/Pen 28
 - cursor/pen button 19, 28
 - ink color 28
 - keyboard button 19
 - L and R buttons 18, 25
 - maximum operating distance 16
 - next and previous buttons 25
 - pen style button 19
 - previous and next buttons 18
 - projection button 18
 - table-top use 16
 - using the touch pad 18
 - using with multiple devices 21
- Remove Stylus 40
- replacement parts 46
- Replay Strokes 39
- Reset Notifications 36
- reveal 32
- right-click 25
 - using the WT remote control 25
- S**
- Save File As 36
- Save image size 36
- Save to Directory 36
- snapshot
 - file location 36
 - file name 36
 - printing 38
 - saving 36
- software
 - menus 34
 - options 34
- sounds
 - status 24
- sounds from the board 27
- spotlight 31
 - drag to ellipse 31
 - enlarge or shrink 31
 - removing 32
- Start PolyVision driver 43
- Startup Pen Style 37
- Status Messages (WT models) 22
- system requirements 10
- T**
- technical support 48
- tools required 3
- U**
- Ubuntu 10
- uninstall PolyVision driver
 - Linux 44
 - Macintosh 44
 - Windows 43
- using dry-erase markers 27
- using the on-screen keyboard 26
- W**
- Walk-and-Talk
 - getting started checklist 15
 - multiple monitors 20
 - printing and saving 30
 - remote control options 16
- Walk-and-Talk Wireless (IR) 71
- writing in projection mode 27

WT

- BT adapter ID number 54
- eraser pad replacement 45
- installing wireless BT option 55
- Interactive panel (IP) 1
- interactive whiteboard 1
- IR reflecting from walls and ceiling 70
- IR wireless operating distance 70
- Lightning technology 1
- mounting heights for children 6
- moving the cursor 25
- Power/Status LED 10
- projection mode 25
- using the on-screen keyboard 19
- using the wireless (IR) option 70
- whiteboard power with BT option 57
- wireless (IR) option 70
- wireless (IR) transmitterpositioning 71
- wireless (IR) USB cable connection 70
- wireless BT option preparations 54
- wireless(IR) transmitter testing 72
- writing and erasing with IP models 30
- writing on the computer projection 28

WTL

- wireless (IR) option 71