

VITRM



SMARTLAYER

Lookbook 2025

Smart Film. Retrofitted.



## Your Space. Your Rules.

**SmartLayer** creates privacy  
at the click of a switch.



**Just One Click.**

**Privacy Delivered.**



## Perfect fit.

Our **Plug & Play** system connects seamlessly, for a setup that works flawlessly.



## **Dressed to Impress.**

**Clean lines.**

**Hidden wires.**

A smart film setup that looks as good as it performs.







## **Made to Measure**

Tailored to every edge, corner, and cut. Privacy where it matters most.



## Adaptable Design.

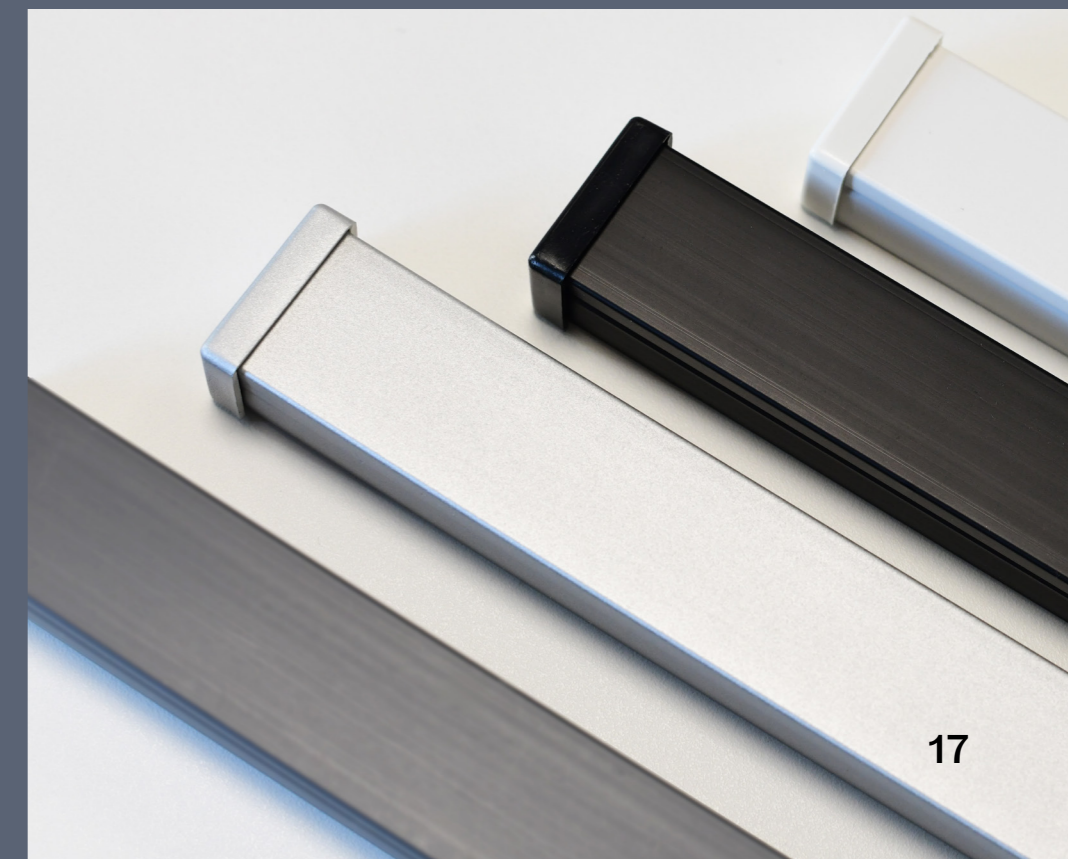
Discreet cable solutions allow SmartLayer to integrate, wherever it's needed.

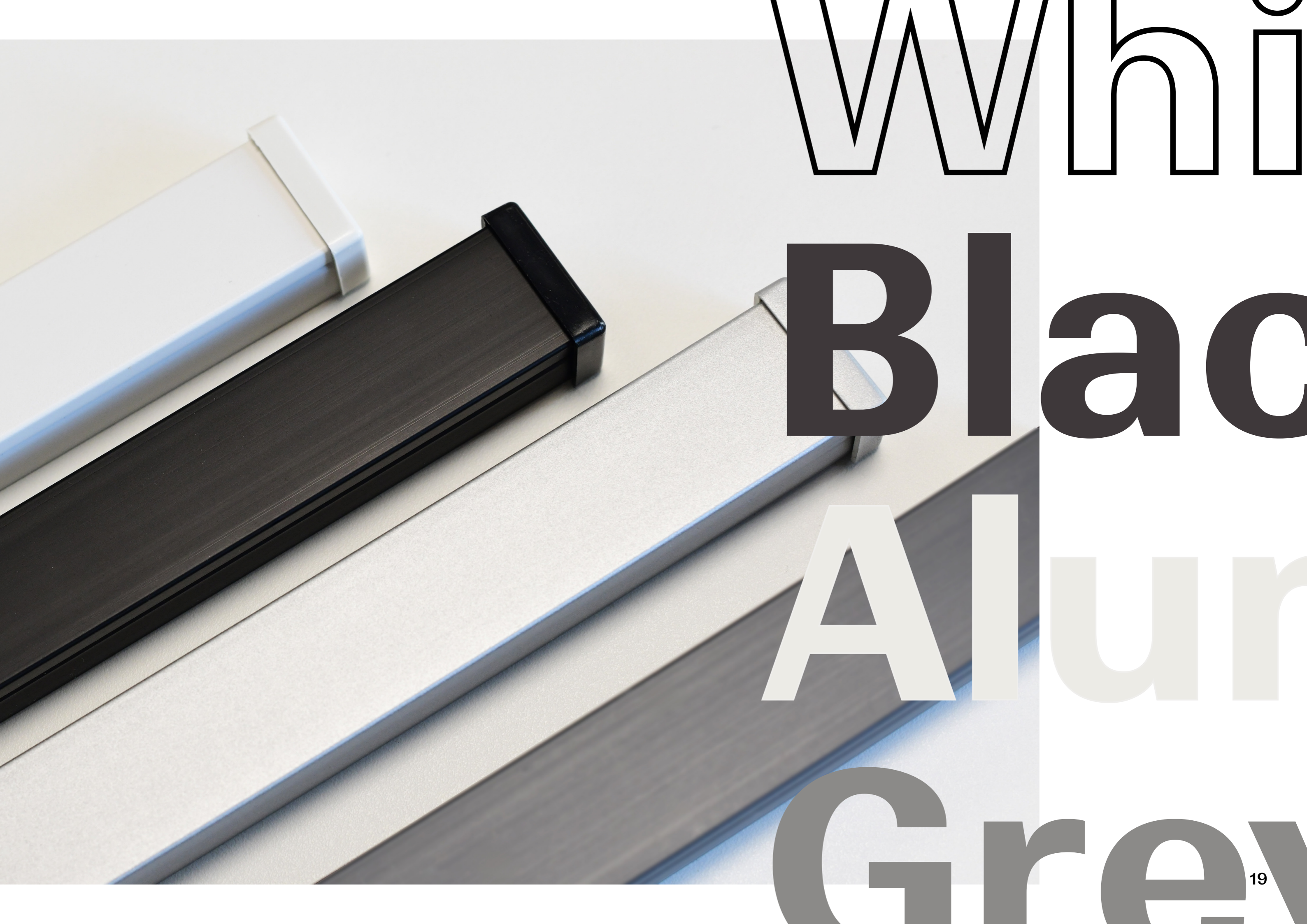




## Made to Match.

Match your mood and your space. Our Power Bar finishes are designed to fit right in.





Whi

Black

Alur

Grey



# Considered Components.

Our complete suite of components and finishing details compliment your space and are designed to disappear.



## Demanding Spaces.

SmartLayer blends into even the most demanding spaces, with performance you can trust.



**Space Elevated.**



# VITRM

## Get in Touch

[vitrm.com](http://vitrm.com)  
[sales@vitrm.com](mailto:sales@vitrm.com)  
[smartlayer@vitrm.com](mailto:smartlayer@vitrm.com)

VITRM  
30 Engate Street  
London, UK  
SE13 7HA



SMARTLAYER BY VITRM

V