

Veneer

Our Veneer portfolio includes natural and composite veneers. Veneers are a natural material, and variations will occur in color, grain structure and texture

Steelcase

Disclaimer

There may be variation in color, texture, and finish between this sample and the actual product.

Item #23-0000073 02/2025 ©2025 Steelcase Inc. All rights reserved. All specifications subject to change without notice. Trademarks used herein are the property of Steelcase Inc. or of their respective owners. Printed in U.S.A.

Finish Details

Environmental

Steelcase’s proprietary UVTopcoat™ ultra-violet (UV) water-borne finish process is unique to the industry. The water-borne UV Topcoat™ marks a major milestone in the transition Steelcase Wood began back in 2001 to eliminate solvents from the wood furniture finishing processes. Since 2001, Steelcase Wood reduced the Volatile Organic Compounds (VOC) emissions by 91% reducing hazardous waste by an estimated 85%. With virtually no VOC emissions and the conservation of 700,000 gallons of water each year, the UV Topcoat™ process protects the environment while providing exceptional durability and clarity.

FSC COC Certification

Steelcase Wood harvesting practices are just one of the steps in achieving Forest Stewardship Council Chain of Custody (FSC CoC) certification. Chain of Custody is the path taken by raw materials through processing, manufacturing and distribution. From the time the wood arrives at the Steelcase wood plant, through manufacturing and until it’s loaded for delivery, FSC CoC certification assures customers the product is made responsibly and entirely with certified wood. Steelcase Wood’s primary suppliers are FSC certified. In fact, a majority of the Cherry Steelcase Wood uses in manufacturing is FSC certified. Additional FSC and SFI (Sustainable Forestry Initiative) certified woods and certified core are also available.

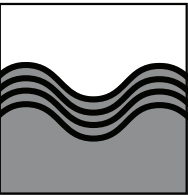
Level™ Certification

Many Steelcase wood products are level™ certified to the BIFMA e3 sustainability standard. According to BIFMA, the level™ conformance mark ensures a comprehensive, independent and impartial assessment of the environmental and social impacts of a product’s manufacture. level™ makes it easy to identify products that have been evaluated against a consensus-based, multi-attribute sustainability standard.

Finish Levels

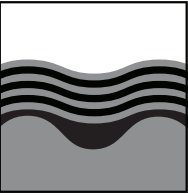
Two wood finish levels are available, offering customers a choice of wood finishes suited

Open Pore Finish



Has a medium gloss level and is smooth to the touch, yet the grain of the wood can be felt. It leaves the natural variations in the texture of the wood grain visible to the eye and

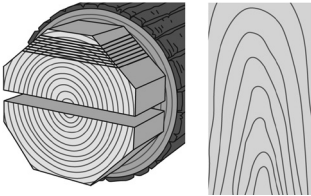
Full Fill Finish



Has a medium gloss level and the grain pattern is completely filled, providing a satin-smooth look and feel. Full fill is available on horizontal worksurfaces.

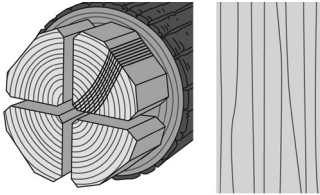
Cut Types

Flat Cut



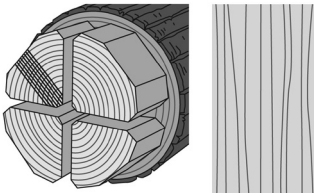
Veneer is cut parallel to the flat side of the cant at a tangent to the growth rings of the tree. This produces a cathedral or oval pattern. On average, there is a 6”-8” wide leaf width. On an 18” wide surface, there will likely be three leaves

Rift Cut



This cut is used specifically for oak. Cutting lines are an arc approximately perpendicular to the growth rings. This produces a comb-like straight grain or ribbon pattern. On average, leaves are 2 1/2” to 4” wide.

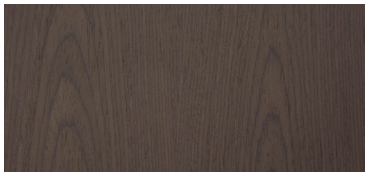
Quarter Cut



Veneer is cut from quarter sections of the log, produced by cutting each cant in half. Cutting lines are at an angle of approximately 90 degrees to the growth rings at the center of the quarter. This produces a straight grain or ribbon pattern. On average, leaves are 2 1/2”

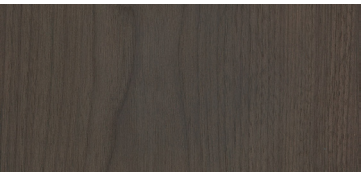
Grain Consistency

Veneers are a natural materials, and variations will occur in color, grain structure and texture. The level of variation can differ across our Composite, Natural and Planked Veneer collections. For customers seeking minimal variation in both grain and color, we recommend our Composite Veneer collection. For those seeking more expressive veneers, are Planked Veneer will suite their needs creating one-of-a kind spaces with variation in color and natural markings.



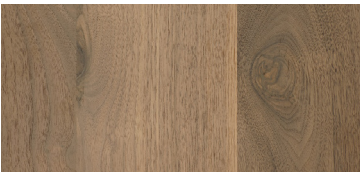
Espresso on Walnut Composite

3LHX



Thunder Walnut

37A2



Planked Walnut

3P71

Subtle

More consistent grain design



Expressive

Natural markings and color ranges should be expected

Composite Veneer

Composite Veneers are a great option for customers desiring a natural product while needing consistency in color and grain design across multiple products and applications.

Natural Veneer

Natural veneer stains are meant to enhance the beauty of spaces and coordinate with other materials in our offering by introducing a neutral tone to the environment. Subtle grain and color variation should be expected.

Planked Veneer

Planked Veneer is intentionally designed to highlight the unique characteristics of wood. To create this finish, veneer flitches with knots, contrasting streaks, and other natural markings with are used to create an expressive veneer design.

Planked Veneer



Planked Maple

3P51



Unmarked Oak

3VFX



Planked Cherry

3P41



Planked Oak

3P61



Planked Walnut

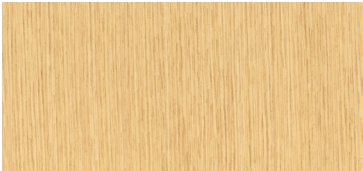
3P71

Veneer

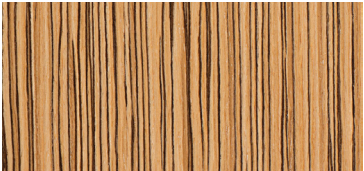
Composite Veneer



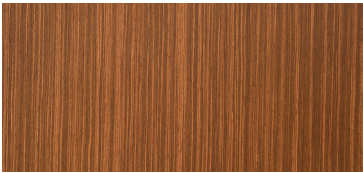
Desert Oak on Oak Composite 3LEX



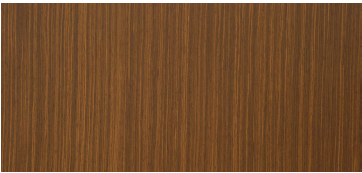
Oak 3HGX/3JDX



Zebrano 3GGX



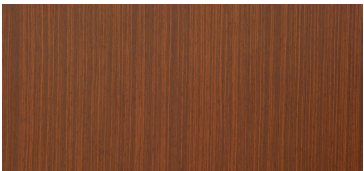
Chai on Walnut Composite 3LGX



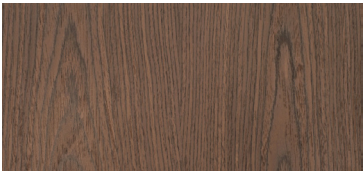
Clear Walnut on Walnut Composite 3LBX



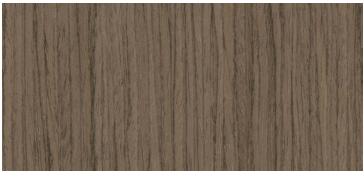
Medium Cherry on Cherry Composite 3LCX



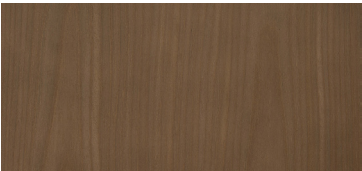
Natural Walnut on Walnut Composite 3LDX



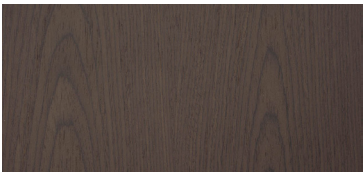
Walnut 3HVX/3JJX



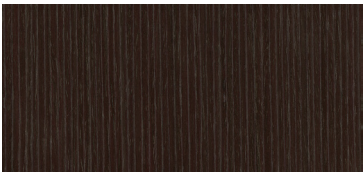
European Walnut 3F8X



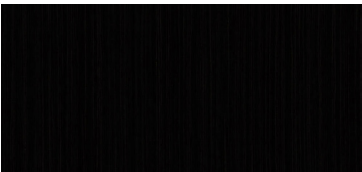
Graphite on Oak Composite 3LAX



Espresso on Walnut Composite 3LHX



Night Cerused Oak 3ZNX



Ebony on Walnut Composite 3LJX

Natural Veneer



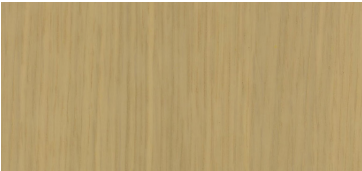
Blanch Maple 35A2/32A2



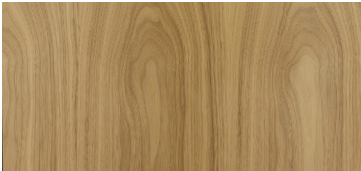
Clear Maple 3522/3524 3222/3224



Figured Anegre 3832



Desert Oak 3602/3604



Washed Walnut 3082/3084



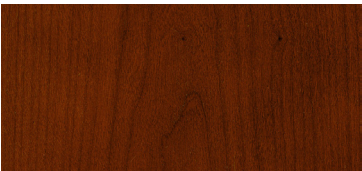
Clear Cherry (Aged) 3402/3404



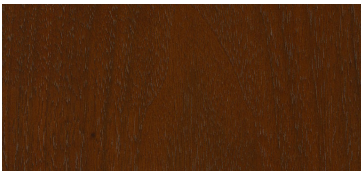
Medium Mahogany on Walnut 3772/3774 3372/3374



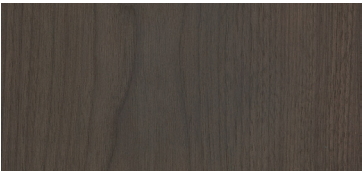
Clear Walnut 3702/3704 3302/3304



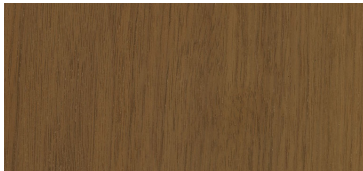
Medium Cherry 3422/3424



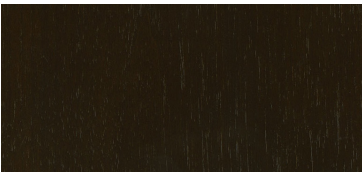
Natural Walnut 3712/3714 3312/3314



Thunder Walnut 37A2/33A2



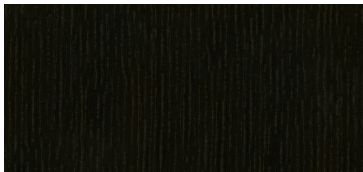
Graphite Walnut 3062/3064 3382/3384



Dark Walnut 3762/3764 3362/3364



Black Walnut 3342/3734 3394/3392



Volcanic Oak 36A2

Veneer

Planked Veneer

Finish Levels: OP = Open Pore Finish | FF = Full Fill Finish

Cut Types: FL = Flat Cut | RC = Rift Cut | QC = Quarter Cut

Price Group Wood 1		Americas Finish Code	Europe, Middle East and Africa Finish Code	Asia Pacific Finish Code
Planked Veneer	OP Unmarked Oak	3VFX	—	—
	Planked Cherry	3P41	—	—
	Planked Maple	3P51	—	—
	Planked Oak	3P61	—	—
	Planked Walnut	3P71	—	—

Planked veneer has intentional and natural variations that include, but are not limited to character marks, grain pattern, color and natural color aging.

Composite Veneer

Price Group Wood 1		Americas Finish Code	Europe, Middle East and Africa Finish Code	Asia Pacific Finish Code
Composites	European Walnut	3F8X	—	—
	Night Cerused Oak	3ZNX	—	—
	FC Oak	3JDX	—	—
	QC Oak	3HGX	—	—
	FC Walnut	3JJX	—	—
	QC Walnut	3HVX	—	—
	Zebrano	3GGX	—	—
	Clear Walnut on Walnut Composite	3LBX	—	—
	Medium Cherry on Cherry Composite	3LCX	—	—
	Graphite Oak on Oak Composite	3LAX	—	—
	Natural Walnut on Walnut Composite	3LDX	—	—

Price Group Wood 2		Americas Finish Code	Europe, Middle East and Africa Finish Code	Asia Pacific Finish Code
Composites	Desert Oak on Oak Composite	3LEX	—	—
	Chai on Walnut Composite	3LGX	—	—
	Espresso on Walnut Composite	3LHX	—	—
	Ebony on Walnut Composite	3LJX	—	—

Composite Veneers are an engineer wood intended to create specific grain patterns and characteristics. They are pre-stained and finishes with Steelcase's Clarity water-borne UV topcoat, which protects the environment while providing durability and clarity. Only open-pore finishes are available on composite wood.

For up-to-date resources pertaining to cleaning your products, please refer to <https://www.steelcase.com/cleaning-steelcase-products/>.

Veneer

Natural Veneer

Finish Levels: OP = Open Pore Finish | FF = Full Fill Finish

Cut Types: FL = Flat Cut | RC = Rift Cut | QC = Quarter Cut

Price Group Wood 1		Americas Finish Code	Europe, Middle East and Africa Finish Code	Asia Pacific Finish Code
Cherry	OP/FC Clear Cherry (Aged)	3402	—	—
	FF/FC Clear Cherry (Aged)	3404	—	—
	OP/FC Medium Cherry	3422	—	—
	FF/FC Medium Cherry	3424	—	—
Maple	OP/FC Blanch Maple	35A2	—	—
	OP/QC Blanch Maple	32A2	—	—
	OP/FC Clear Maple	3522	—	—
	FF/FC Clear Maple	3524	—	—
	OP/QC Clear Maple	3222	—	—
	FF/QC Clear Maple	3224	—	—
Oak	OP/RC Desert Oak	3602	—	—
	FF/RC Desert Oak	3604	—	—
	OP/RC Volcanic Oak	36A2	—	—
Walnut	OP/FC Black Walnut	3342	—	—
	OP/QC Black Walnut	3392	—	—
	OP/FC Clear Walnut	3702	—	—
	FF/FC Clear Walnut	3704	—	—
	OP/QC Clear Walnut	3302	—	—
	FF/QC Clear Walnut	3304	—	—
	OP/FC Dark Walnut	3762	—	—
	FF/FC Dark Walnut	3764	—	—
	OP/QC Dark Walnut	3362	—	—
	FF/QC Dark Walnut	3364	—	—
	OP/FC Graphite Walnut	3062	—	—
	FF/FC Graphite Walnut	3064	—	—
	OP/QC Graphite Walnut	3382	—	—
	FF/QC Graphite Walnut	3384	—	—
	OP/FC Medium Mahogany on Walnut	3772	—	—
	FF/FC Medium Mahogany on Walnut	3774	—	—
	OP/QC Medium Mahogany on Walnut	3372	—	—
	FF/QC Medium Mahogany on Walnut	3374	—	—
	OP/FC Natural Walnut	3712	—	—
	FF/FC Natural Walnut	3714	—	—
	OP/QC Natural Walnut	3312	—	—
	FF/QC Natural Walnut	3314	—	—
	OP/FL Thunder Walnut	37A2	—	—
	OP/QC Thunder Walnut	33A2	—	—

Price Group Wood 2		Americas Finish Code	Europe, Middle East and Africa Finish Code	Asia Pacific Finish Code
Walnut	FF/QC Black Walnut	3394	—	—
	FF/FC Black Walnut	3734	—	—

Price Group Wood 3		Americas Finish Code	Europe, Middle East and Africa Finish Code	Asia Pacific Finish Code
Anegre	OP/QC Figured Anegre	3832	—	—
Walnut	OP/FC Washed Walnut	3082	—	—
	FF/FC Washed Walnut	3084	—	—

