

Tac Installation Guide

Americas 2024

Guidelines for installing your
new Tac board


English

3	Safety Requirements
4	Required Materials + Equipment
5	Installation
10	Warranty

Safety Requirements

Tac - Wall Mounted Frameless Tackboard,
Non-Seismic Applications

The building's Engineer of Record must be consulted to determine if there are any seismic requirements.

	⚠ CAUTION CRUSH HAZARD. Failure to properly secure board could result in personal injury.
	⚠ ATTENTION RISQUE D'ÉCRASEMENT. Ne pas attacher la planche de manière sûre pourrait entraîner des blessures personnelles.
SAFETY INSTRUCTIONS	
Read all assembly directions before beginning installation.	
Building construction varies greatly. The Building's Engineer of Record is responsible for the design of building walls which the boards are attached to and must verify the adequacy of the mounting hardware, even if provided by Polyvision.	
The building owner or designated agent is responsible for verifying that the installation is in compliance with all local codes and regulations.	
INSTRUCTIONS DE SÉCURITÉ	
Lisez l'ensemble des instructions d'assemblage avant de démarrer l'installation.	
La construction des bâtiments varie grandement. L'ingénieur d'enregistrement du bâtiment est responsable de la conception des murs sur lesquels sont attachées les planches et doit vérifier que le matériel de montage est adéquat, même si ce dernier est fourni par PolyVision.	
Le propriétaire du bâtiment ou l'agent désigné a la responsabilité de vérifier que l'installation est conforme à l'ensemble des codes et réglementations locaux.	
1078781001 Rev A	

Verify Wall Construction

CAUTION! Adequate wall construction is required to support the weight of the board. Minimum wall construction must be capable of supporting weight amounts listed in Table 1 on page 4.

Minimum Required Wall Construction

Drywall with metal studs:

- Must be at least 25 ga. (0.018" or .5 mm thick) 33 ksi steel studs 38 mm x 89 mm (1.5" x 3.5")
- Studs on maximum 610 mm (24") centers
- Must be at least 16 mm (5/8") thick Type X gypsum drywall for the US or 12 mm (1/2") for EU
- 32 mm (#6 x 1-1/4") drywall screws on 305 mm (12") centers

Drywall with wood studs:

- Stud grade SPF, DF-L or Hem-Fir 38 mm x 89 mm (1.5" x 3.5")
- Studs on 610 mm (24") centers
- Must be at least 16 mm (5/8") thick Type X gypsum drywall for the US or 12 mm (1/2") for EU
- 32 mm (#6 x 1-1/4") drywall screws on 305 mm (12") centers



Required Materials + Equipment

Required Equipment

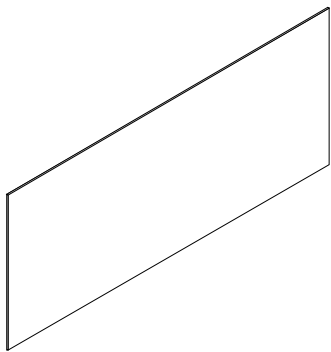
- Drill
- #2 Bit
- Pliers
- Pencil
- Level
- 2 or 3-step ladder
- Tape measure
- #8 1-1/4" drywall screws
- Wall anchors

Note: Screws and anchors to be provided by installer.

Materials Provided

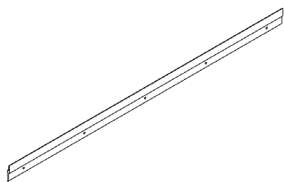
NOTE: Items are not drawn to size. Quantity of wall anchors and screws will vary per product due to the various widths. Board size determines the quantity of anchors and screws.*

Refer to Table 1 for screw and anchor quantities required by size.



Tac panel(s)

* Table 1			
Product Size	Orientation	Brackets	Anchors /Screws
24" x 24"	-	2	8
36" x 48"	Horizontal	2	12
	Vertical	2	10
48" x 72"	Horizontal	2	16
	Vertical	3	18
48" x 96"	Horizontal	2	20
	Vertical	3	18



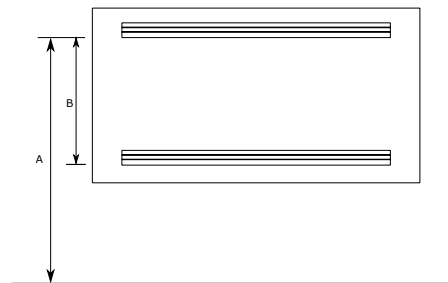
Brackets*

Installation

Step One

- Use appropriate mounting specification based on the size and the orientation of your Tac board
- NOTE: You may drill holes in the support bracket to install into the wall stud for strongest support. Anchor into wall studs as often as possible. Mounting heights are recommendations only.

Horizontal Orientation

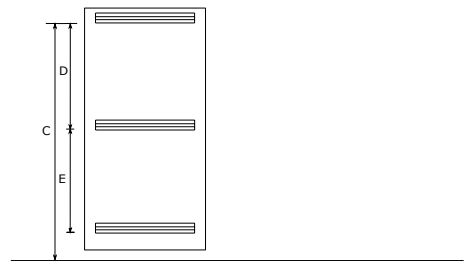


Product	# of Studs	Weight (kg)
24" x 24"	2	5 lbs
36" x 48"	2	17 lbs
48" x 72"	4	62 lbs
48" x 96"	4	80 lbs

Recommended Mounting Heights

Product	A	B
24" x 24"	77"	12"
36" x 48"	77"	24"
48" x 72"	77"	36"
48" x 96"	77"	36"

Vertical Orientation



Product	# of Studs	Weight (kg)
24" x 24"	2	5 lbs
36" x 48"	2	17 lbs
48" x 72"	3	62 lbs
48" x 96"	3	80 lbs

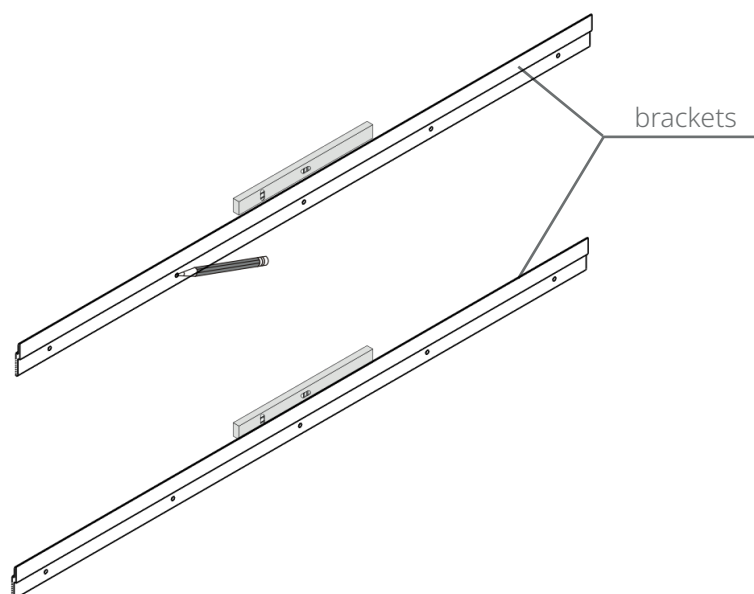
Recommended Mounting Heights

Product	A	B	C	D	E
48" x 36"	77"	36"	-	-	-
72" x 48"			69 11/16"	30"	30"
96" x 48"			92 29/32"	42"	42"



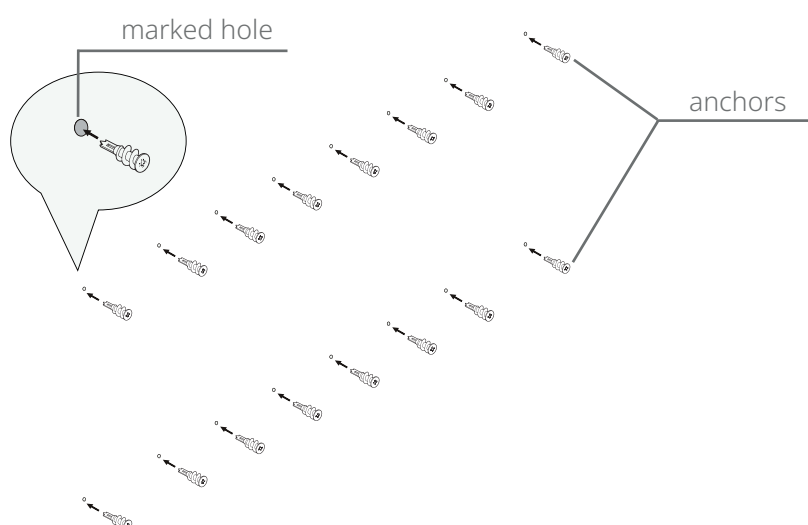
Step Two

- Level brackets and mark holes onto wall. Refer to recommended mounting heights noted on page 5.



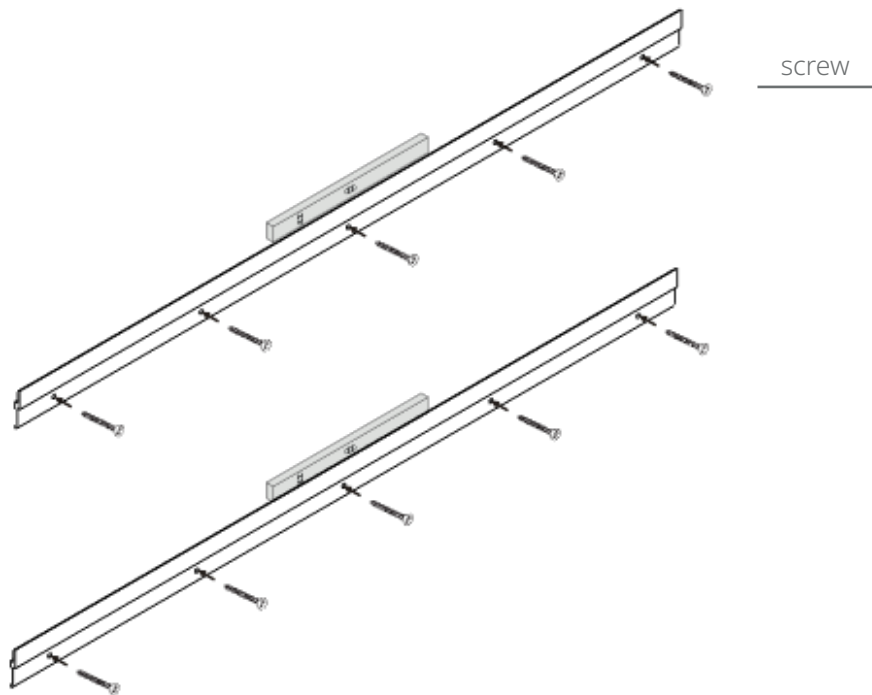
Step Three

- Remove brackets from wall and install wall anchors in all hole locations that are not over a stud. Anchor may not be needed for stud.



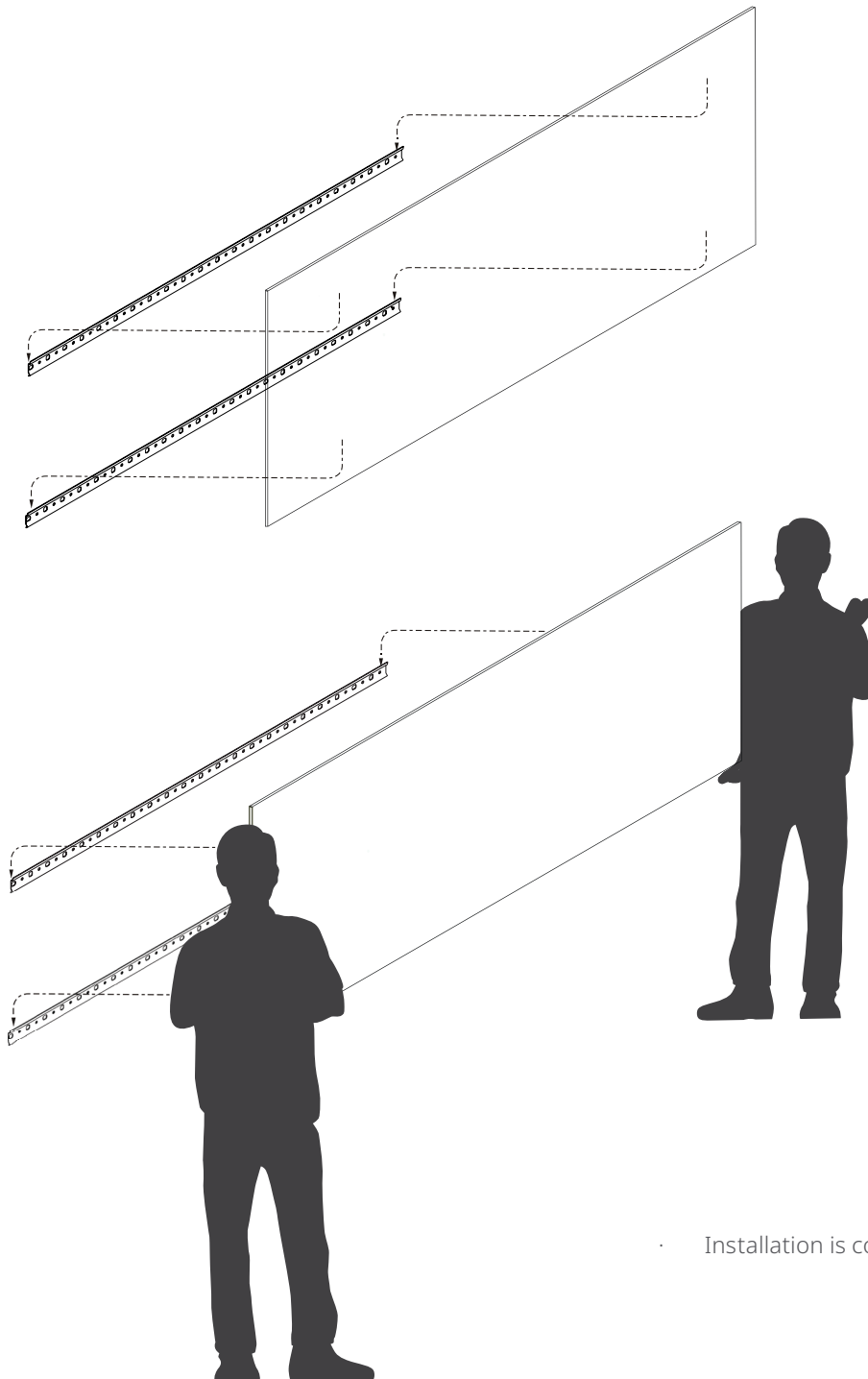
Step Four

- Re-align brackets with holes and secure using screws.



Step Five

- Lower brackets on back of the Tac board onto brackets on wall.
- IMPORTANT: Always check to ensure both top and bottom panel brackets are resting on the wall brackets.



- Installation is complete!

Polyvision Americas

4301 N Wood Drive
Okmulgee, OK 74447 USA

T 1 888 325 6351
E info@polyvision.com

Polyvision Europe

Zuiderring 56
3600 Genk, Belgium

T +32 89 32 31 30
E EMEAsupport@polyvision.com

Polyvision Asia-Pacific

15th Floor, Kinwick Centre
32 Hollywood Road, Central District
Hong Kong

T +852 2520 0160
E APACsupport@polyvision.com

SURFACEMATTERS

©2024 Polyvision Corporation. All rights reserved. Trademarks used herein are the property of Polyvision Corporation or of their respective owner. Polyvision Corporation reserves the right to make changes in product design, construction or detail, and to discontinue any product or material without notice.

polyvision.com



04-08-2024 AMERICAS