

## Product Installation Instructions

Product : Aspect 57HB—59HB

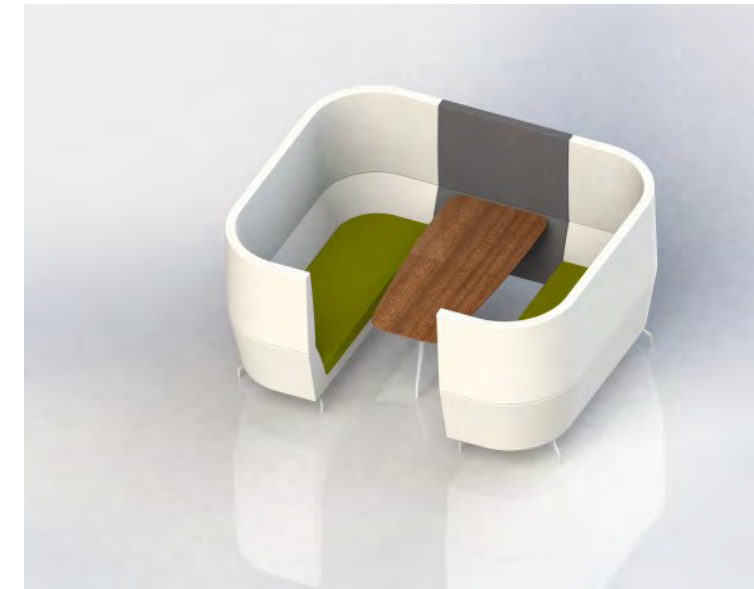
Date :  
Updated 02/09/2018



Aspect- 57HB with power

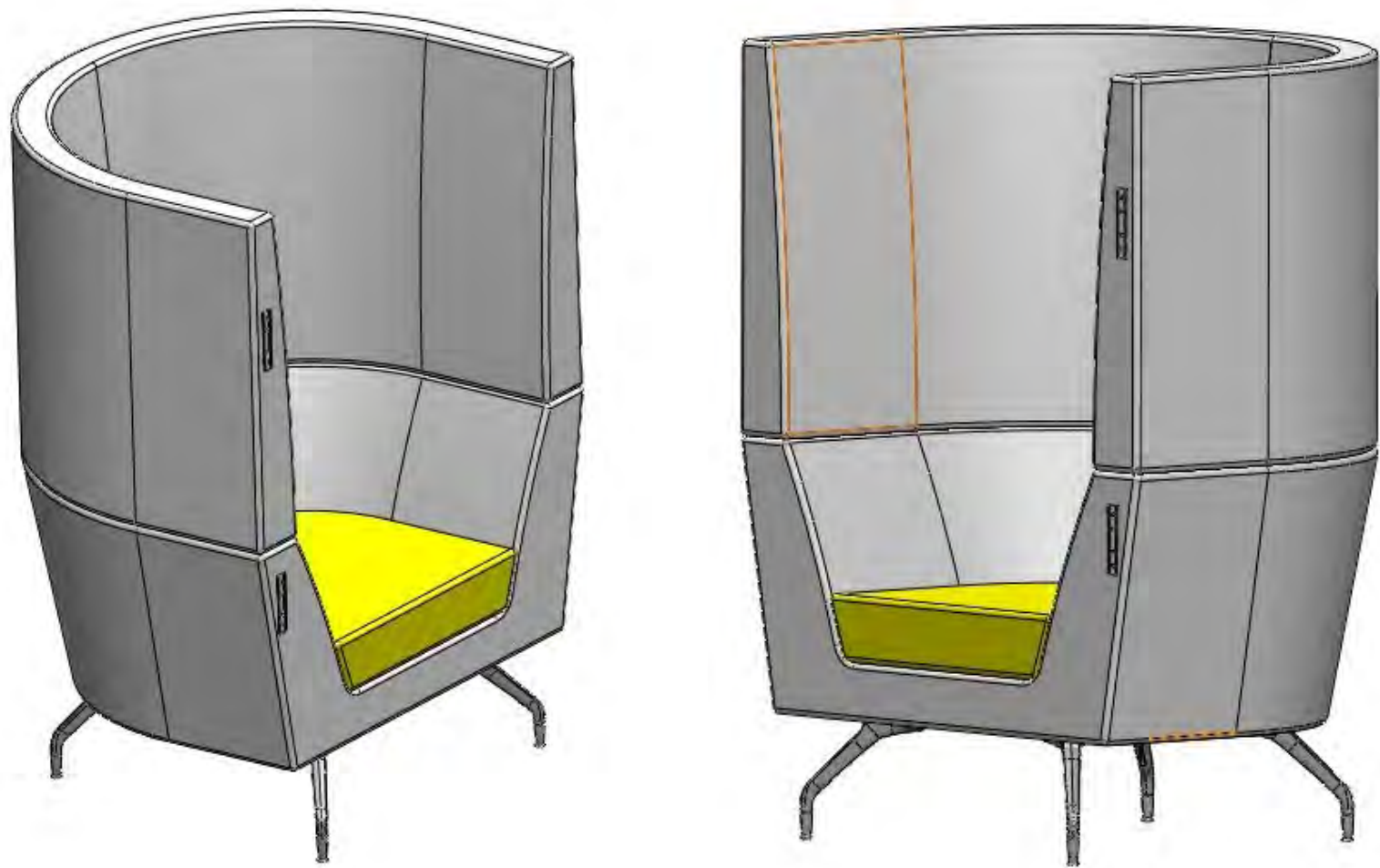


Aspect- 58HB with power

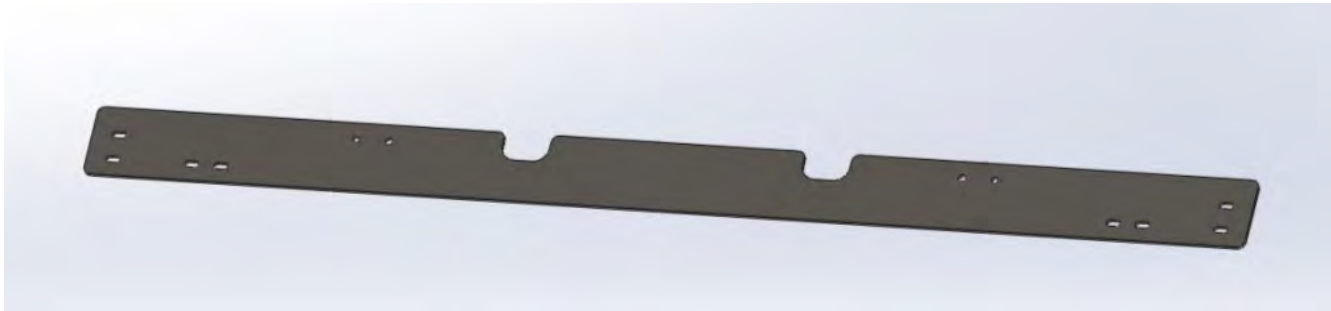


Aspect -59HB with power

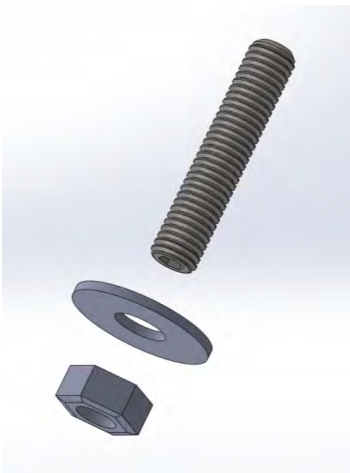
Product Installation Instructions



Seating units with screen fixing brackets pre fitted.



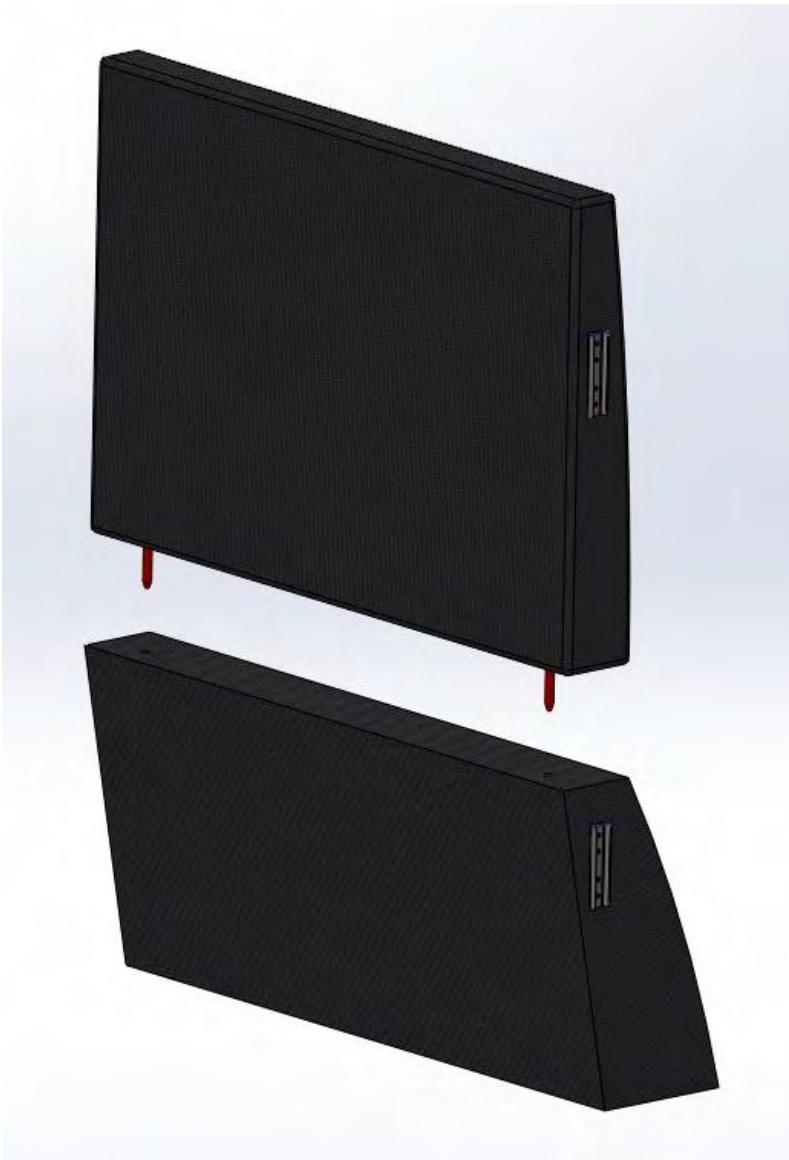
Support Plate



X 8

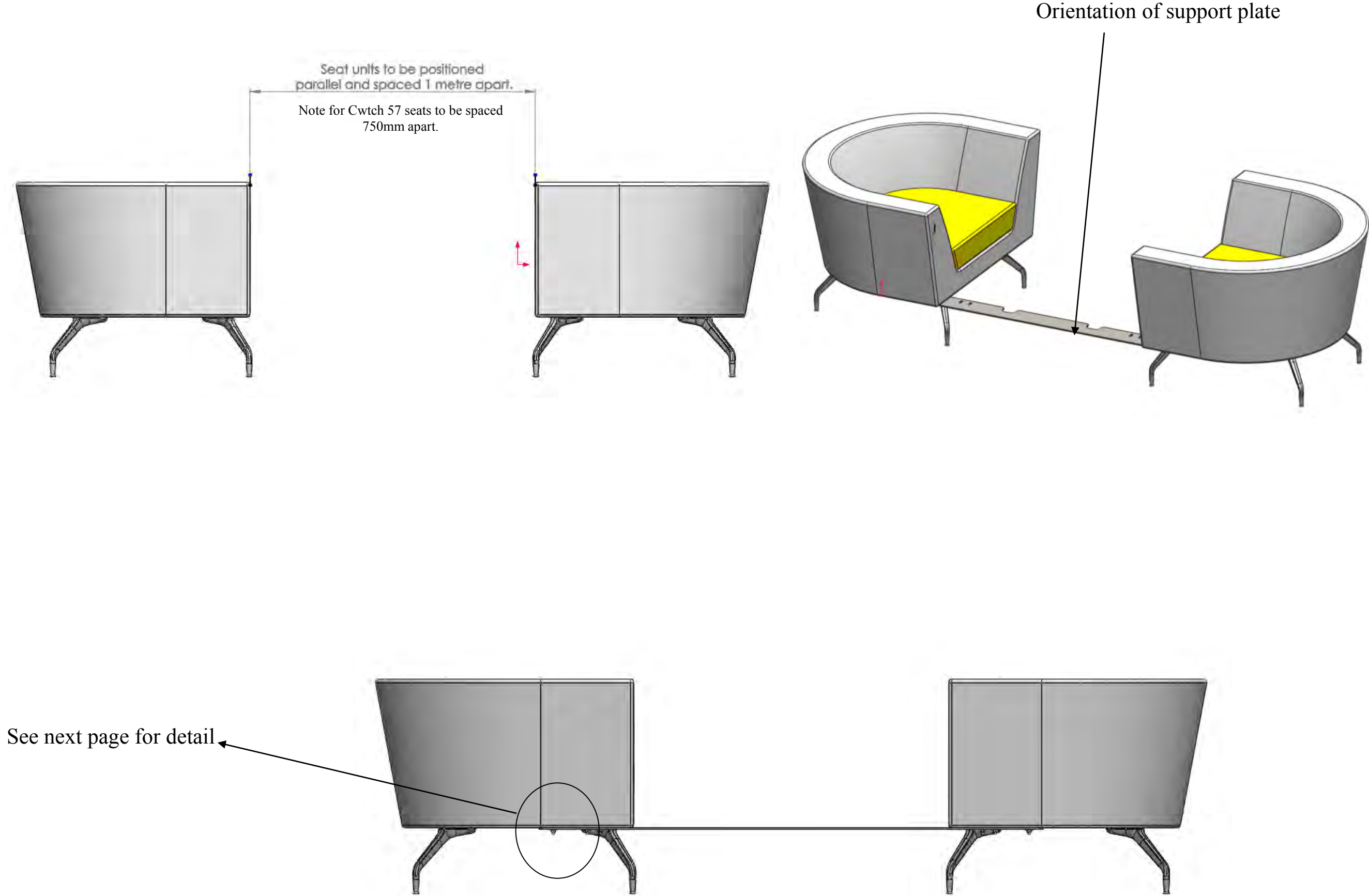


X 4



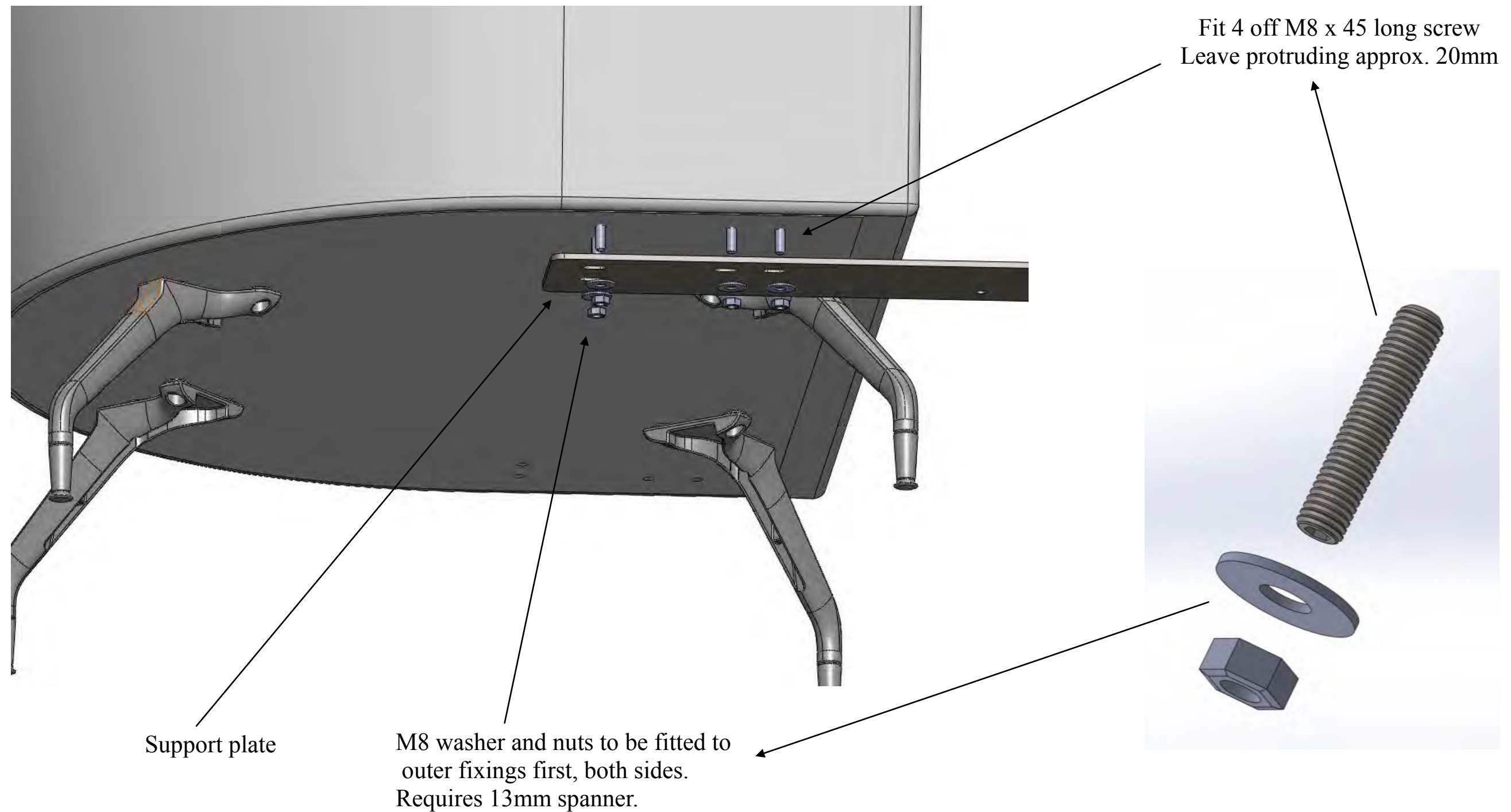
Upper and lower screen units with screen fixing brackets pre fitted (both sides)

Product Installation Instructions



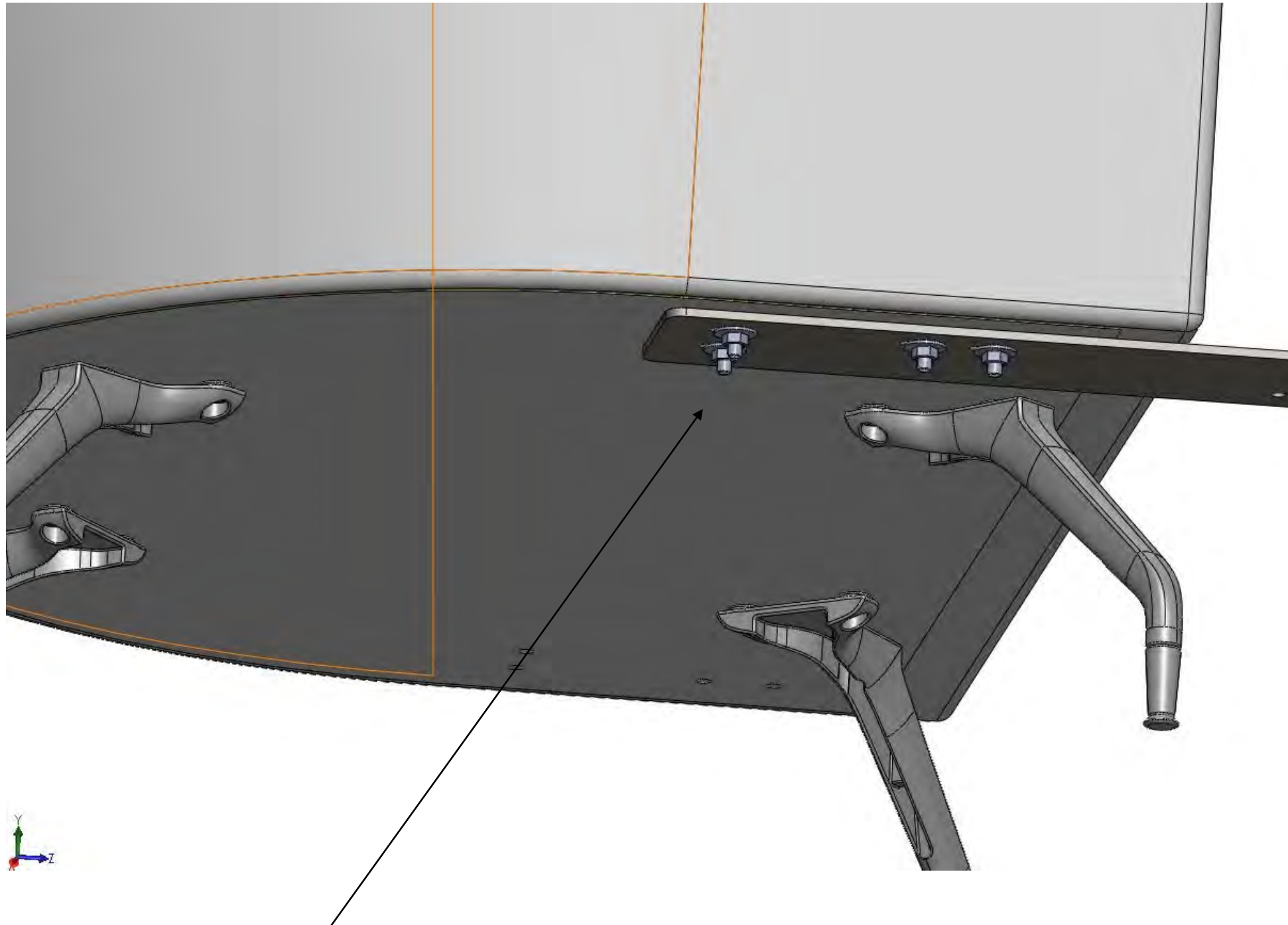


## Product Installation Instructions



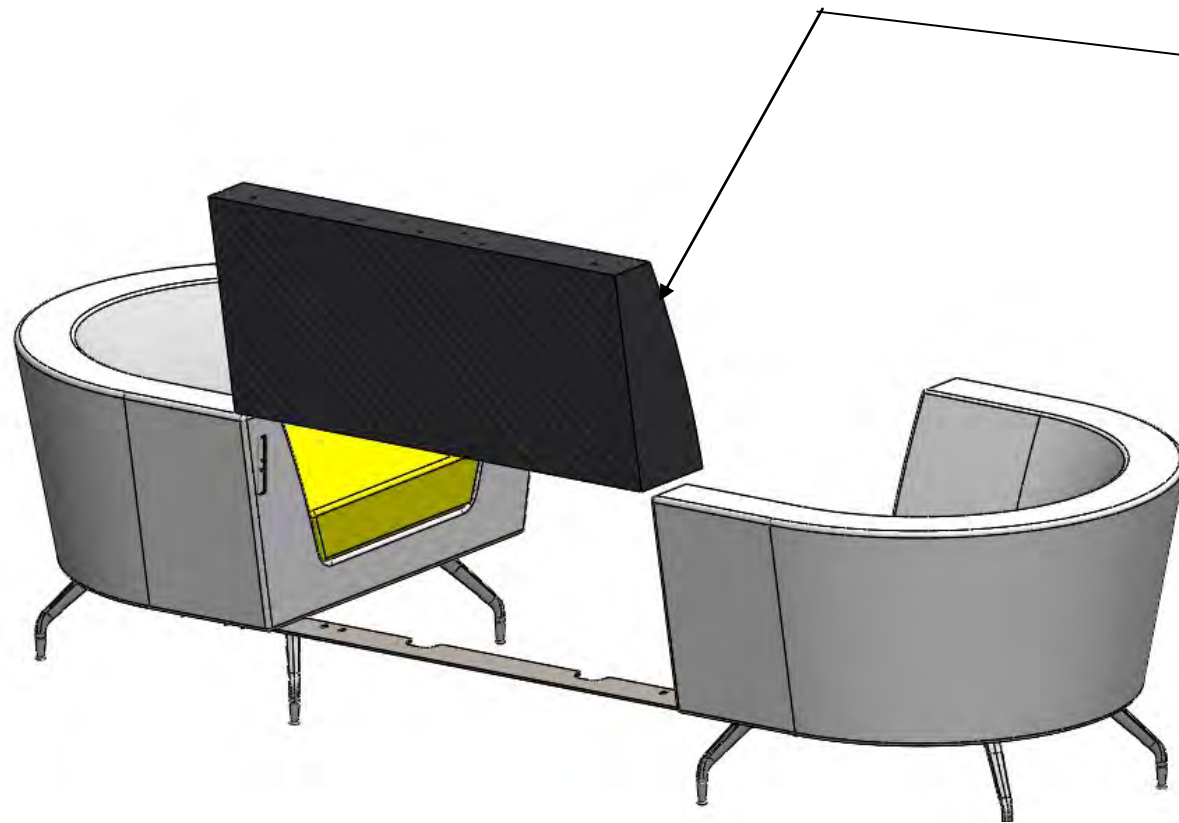
Fit M8 x 45 screws to each unit (8 off in total)  
Orientate support plate as previously shown, lift one end into position and locate slots over screw. Hold in position and fit M8 washer and nut loosely in two positions shown. Repeat for other side, unit may have to be positioned to locate support plate over screws. Then fit remaining M8 washers and nuts and hand tighten all 8 sets.

## Product Installation Instructions

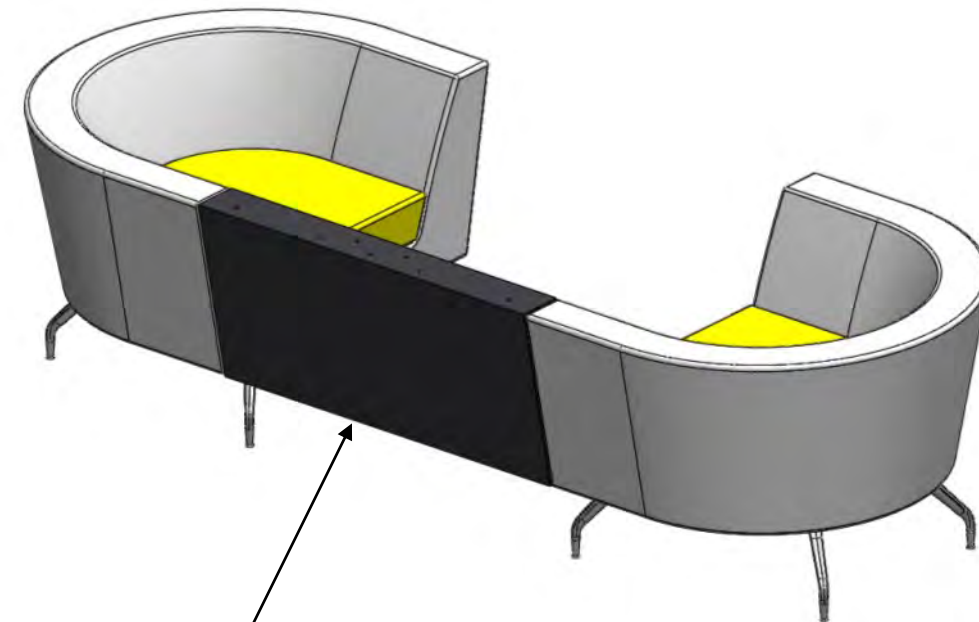


M8 Washers and nuts hand tightened in position.  
Typical both sides.

## Product Installation Instructions

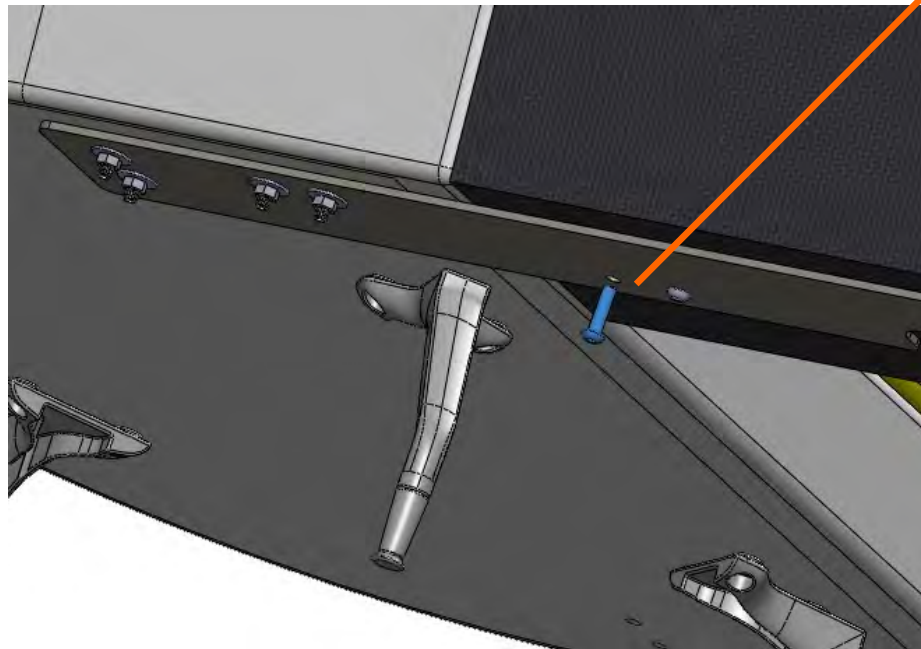
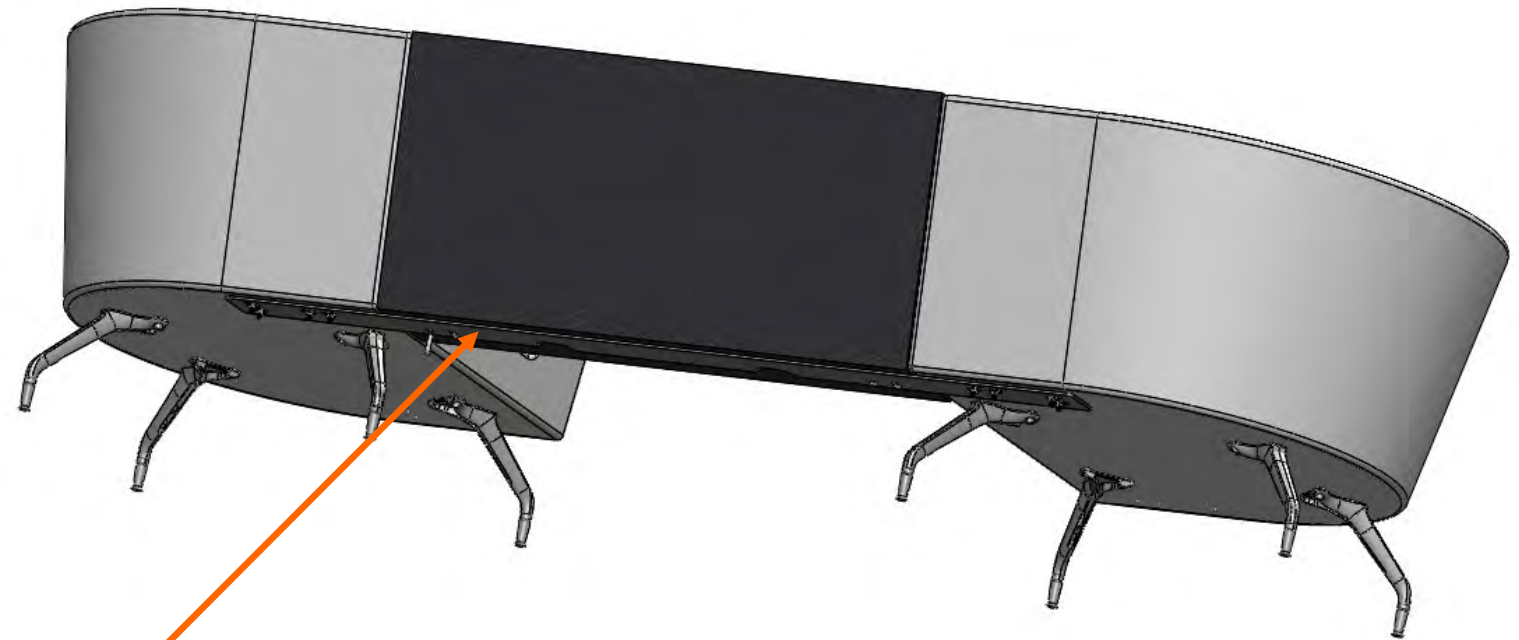


Position lower screen and slide into position ensuring that the dove tail brackets engage on both sides. This will require a certain amount of manipulation to force the lower screen to rest on the support plate.



Lower screen in position

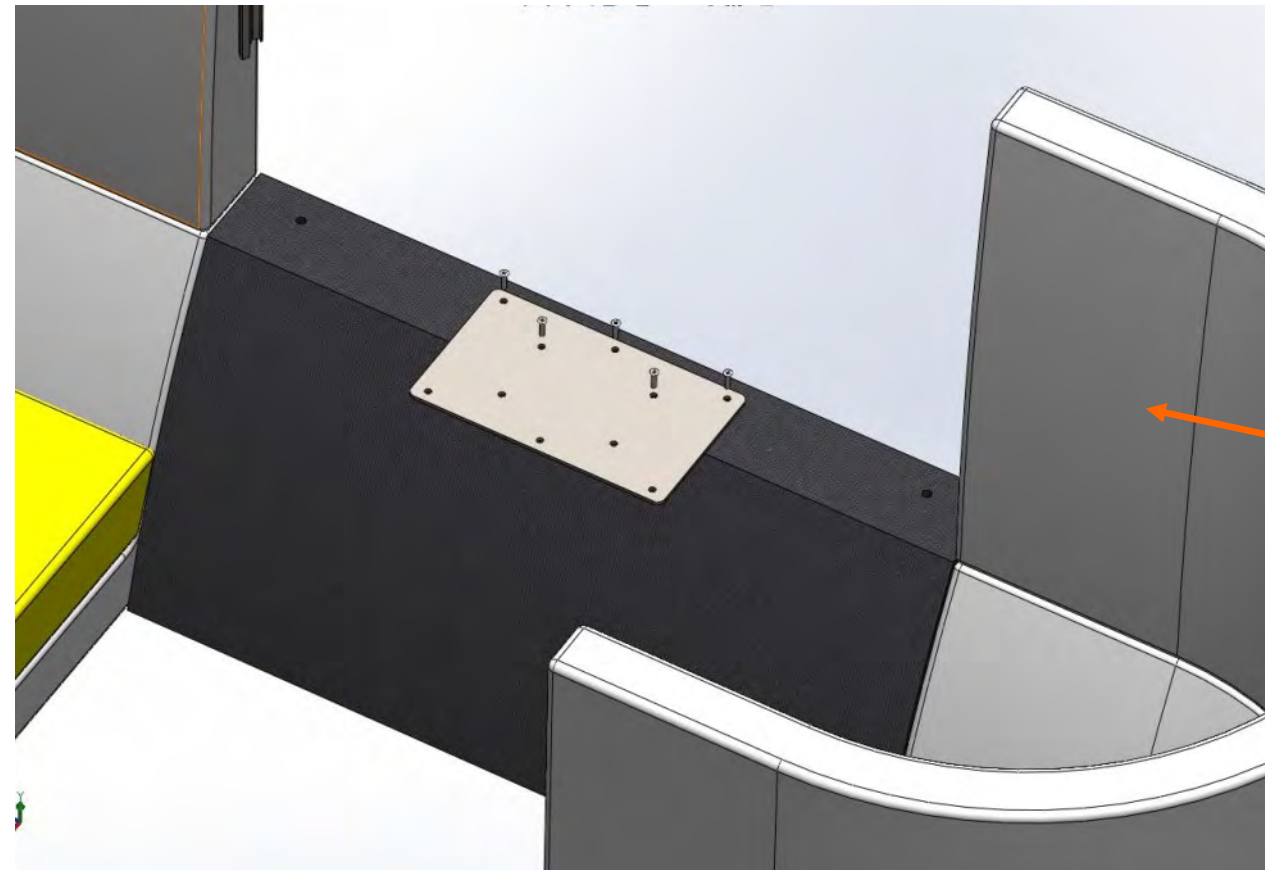
## Product Installation Instructions



Fit M8 socket head screw using 5mm Allen key (4 places).  
Manipulation of fixing holes with use of suitable tool may  
be required to allow alignment of screw hole and plate.



## Product Installation Instructions



See next page for  
screen fitting.

CWTCH 54HB, CWTCH 55HB & CWTCH 56HB—support plate for shelf must be fitted at this stage using 5 off M6 x 35 POZI CSK head (7004-0013)

**If required Shelf bracket must be fitted before centre upper screen is fitted.**

**If any cables are to be fed through to the upper screen , then they should be fed through the lower screen at this time and then fed into the upper screen as installation progresses.**



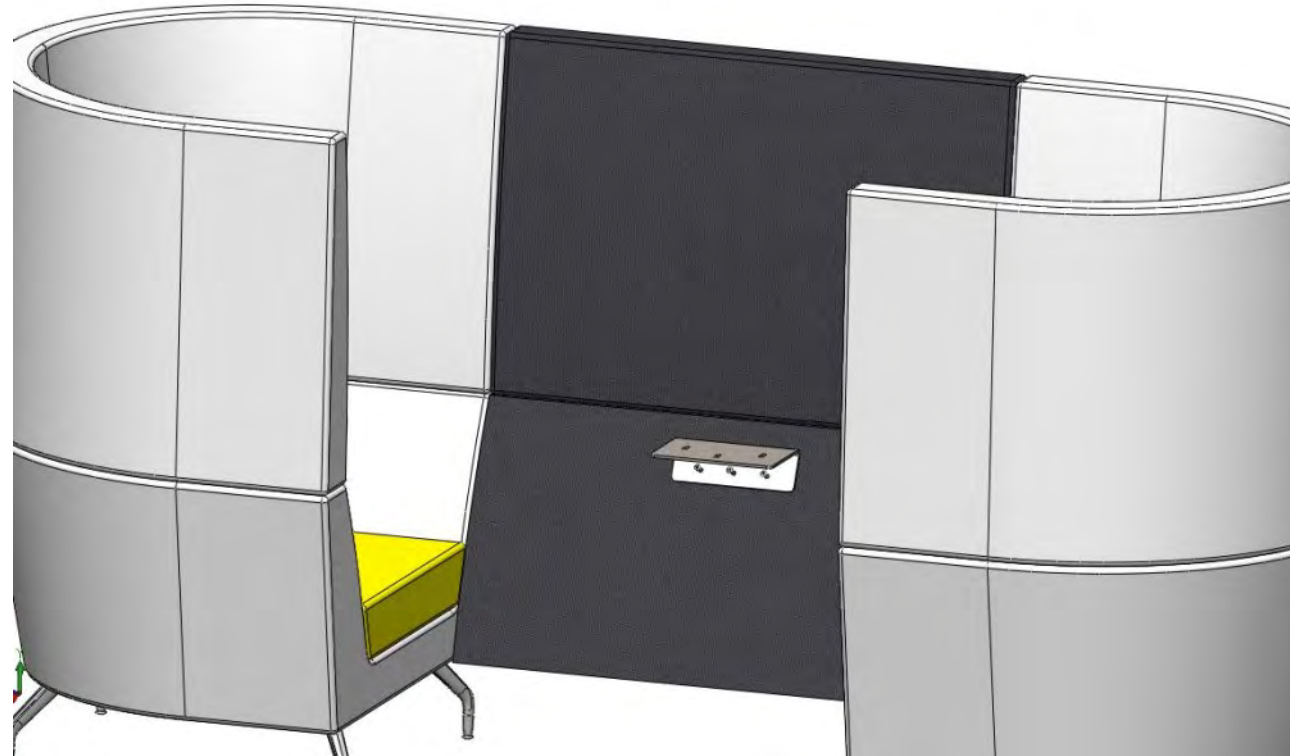
## Product Installation Instructions



Fit each Screen to the seat unit by inserting the 4 pins into the corresponding holes. Ensure correct orientation of the screens—dovetail brackets must face each other to accept the centre top screen

After fitting the screens to the corresponding seat, position the centre upper screen and slide into position ensuring that the brackets engage on both sides. This will require a certain amount of manipulation and force to engage the location pins into the corresponding location holes on the lower screen and to force the upper screen to rest on the lower screen.

## Product Installation Instructions

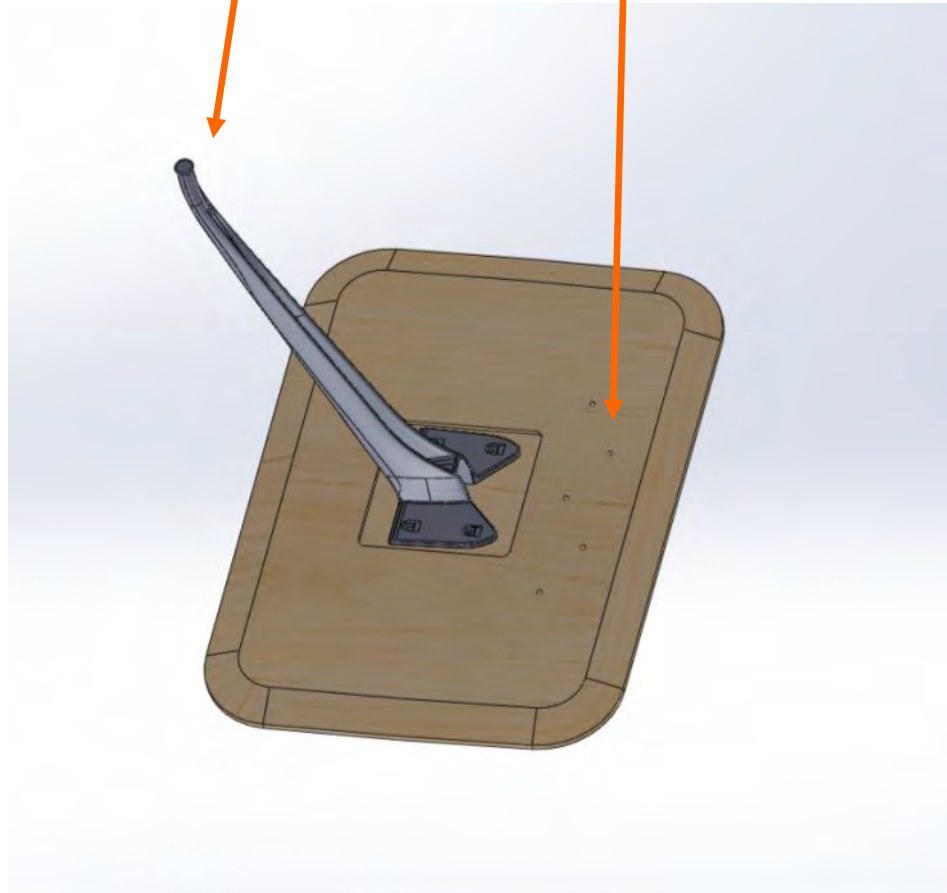


CWTCH 51HB, CWTCH 52HB & CWTCH 53HB—  
support bracket for table to be fitted using 3 off M6 x  
35 POZI CSK head (7004-0013)

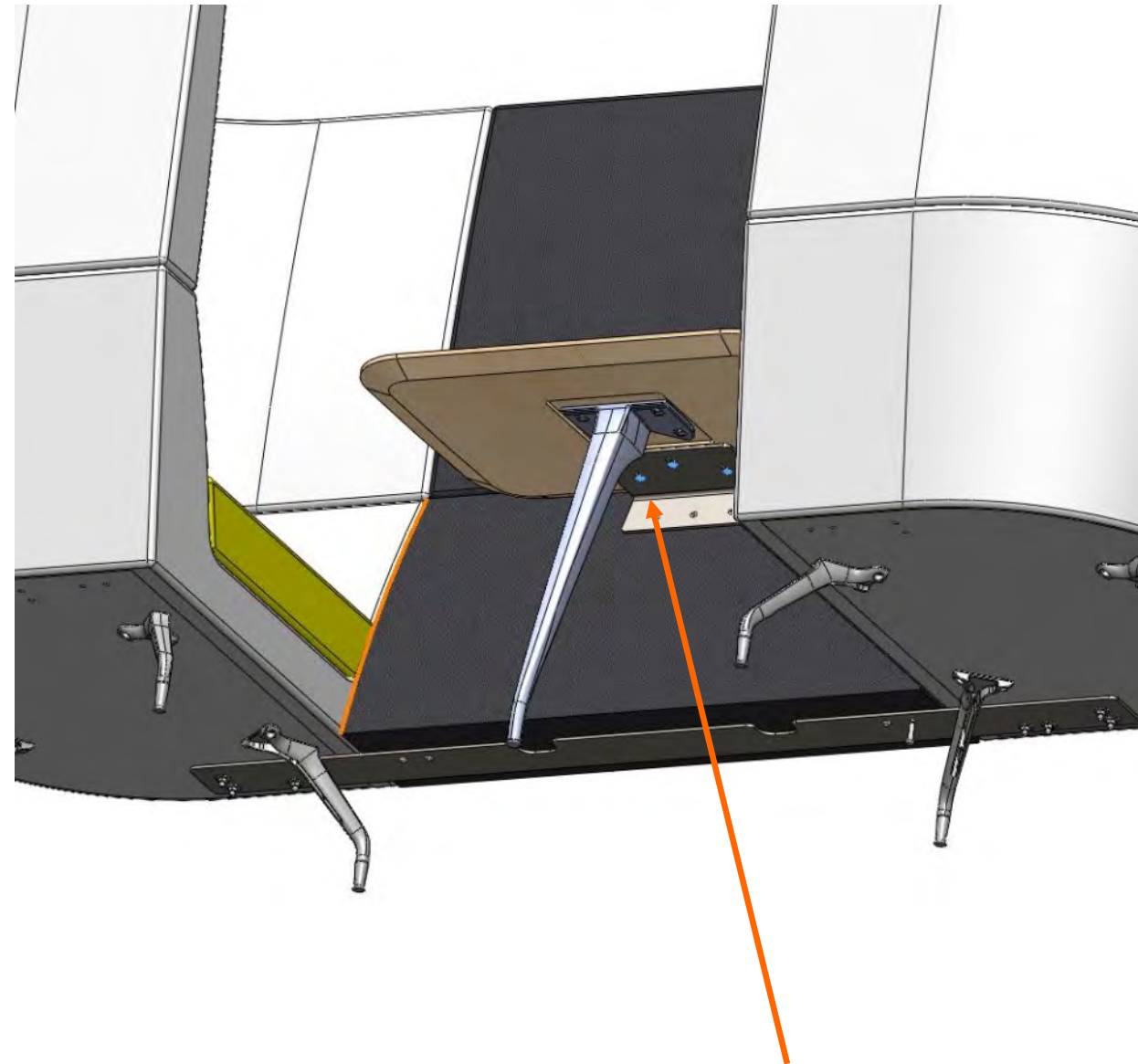
**If required fix  
Table bracket**

## Product Installation Instructions

Ensure leg points away from shelf fixing holes.



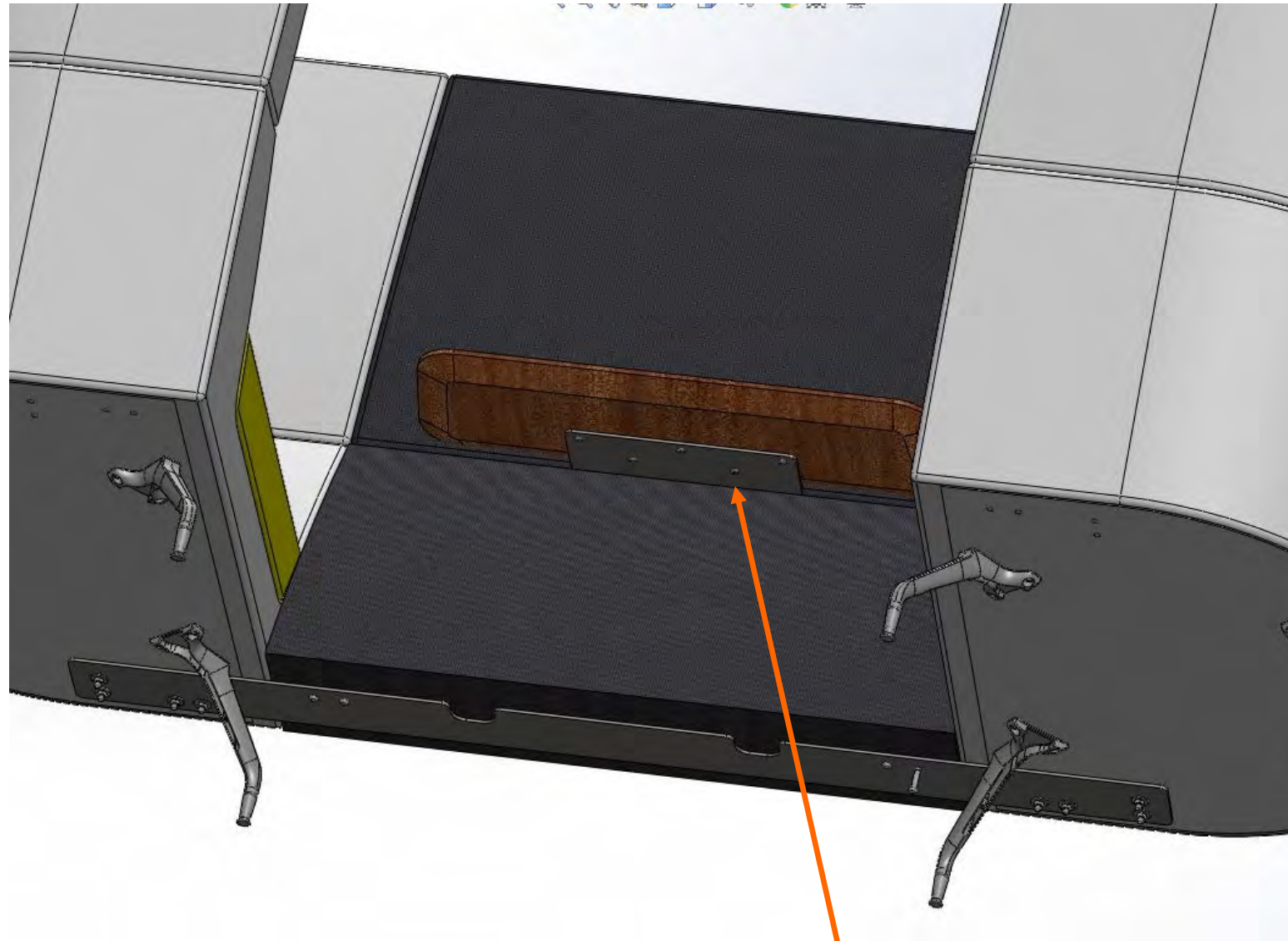
Secure leg to table top using 4 off M6 x 16 socket cap head screws.



Secure table top to bracket using 3 off M6 x 30 POZI CSK screws

Typical for CWTCH 51HB, 52HB and 53HB

## Product Installation Instructions

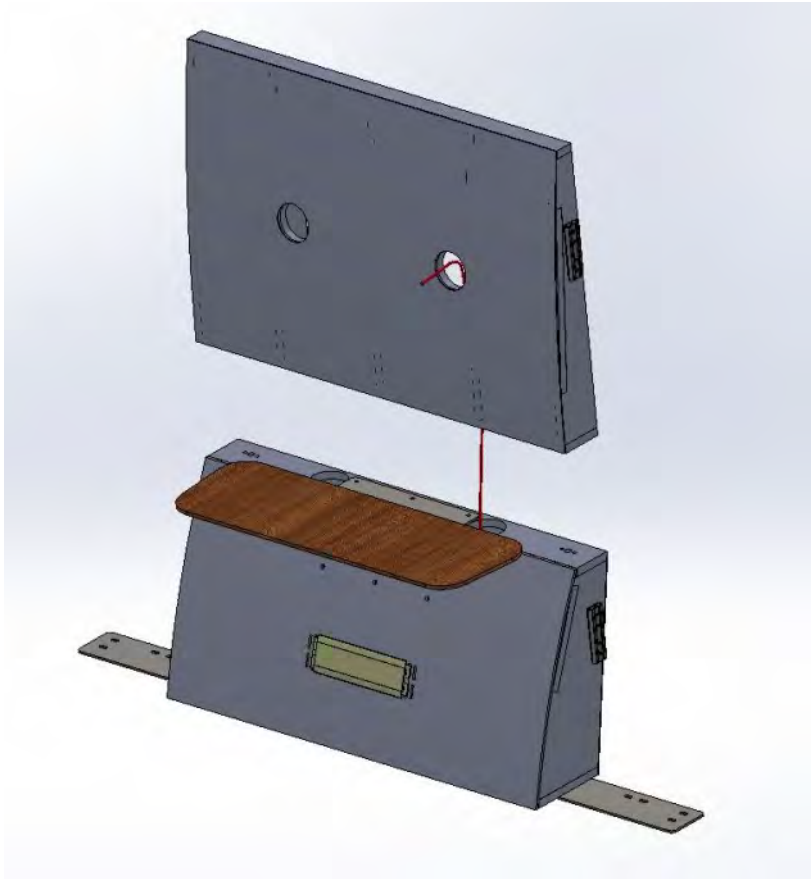


Secure Shelf to bracket using 5 off M6 x 16 POZI  
Pan head screws

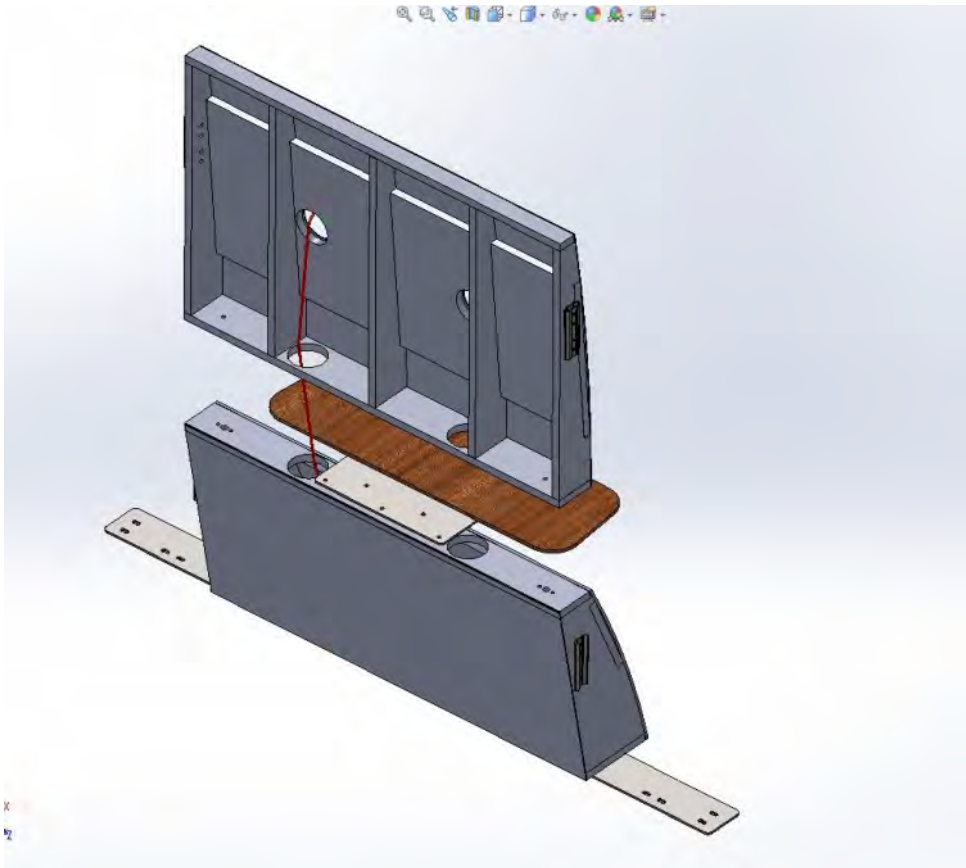
Typical for CWTCH 54HB, 55HB and 56HB



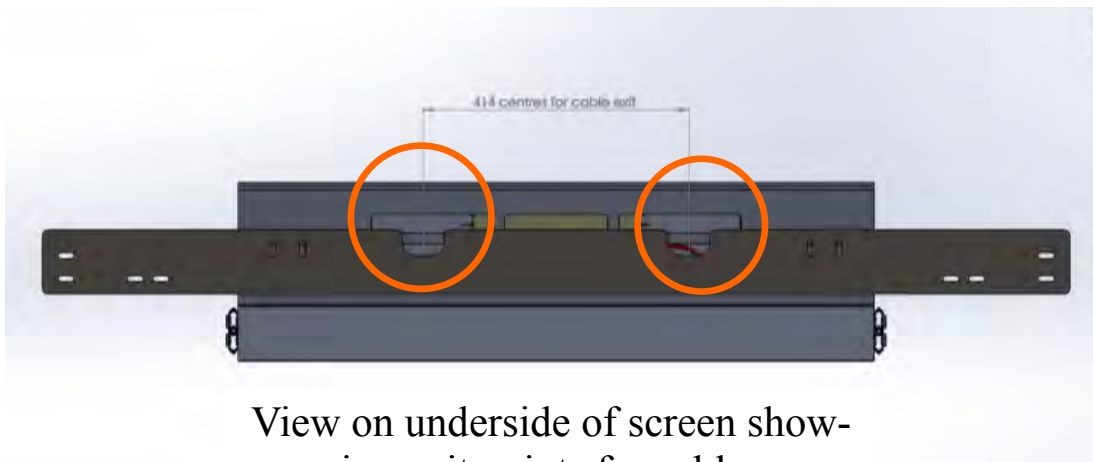
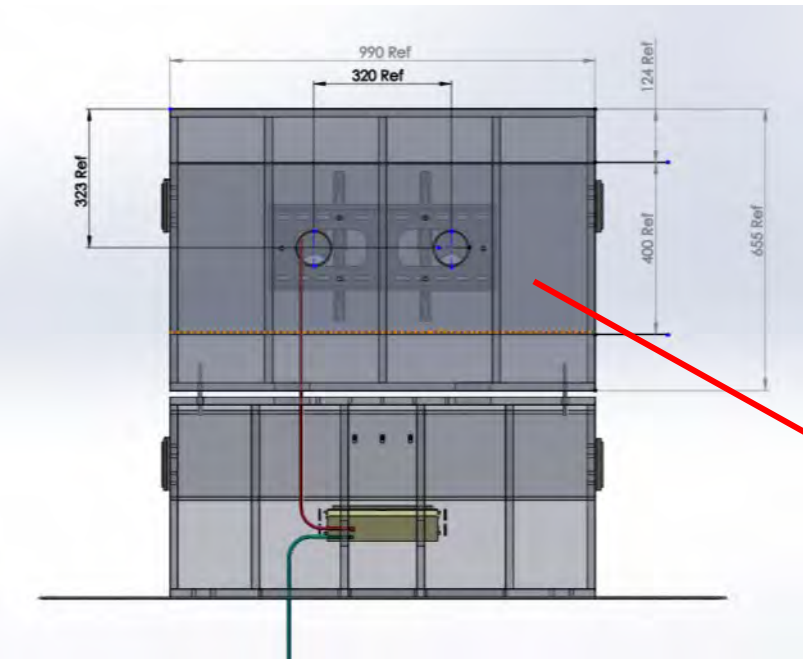
# Product Installation Instructions



When Lower frame is fitted with a power module which has a VGA & Audio cable, and the upper panel is fitted with the TV bracket. Cable is to be routed inside of screen during installation.

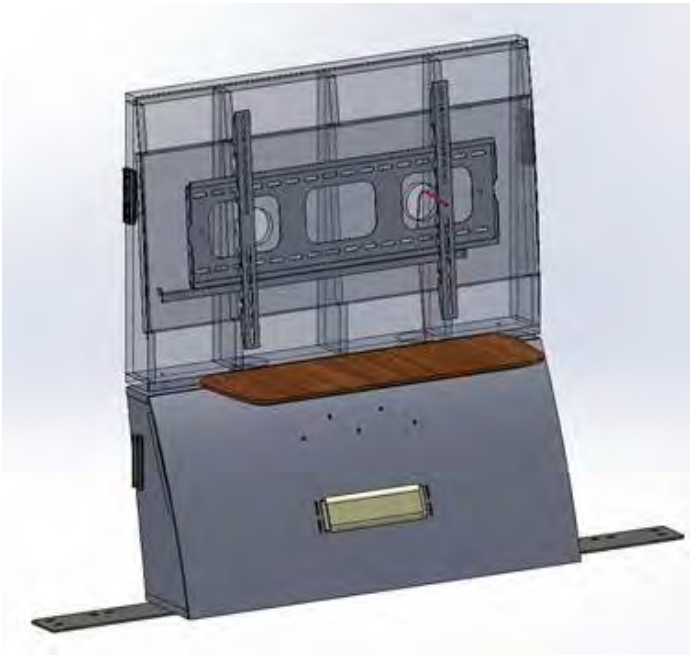


Width 740 on Cwtch 57, Width 990 on Cwtch 58 & 59

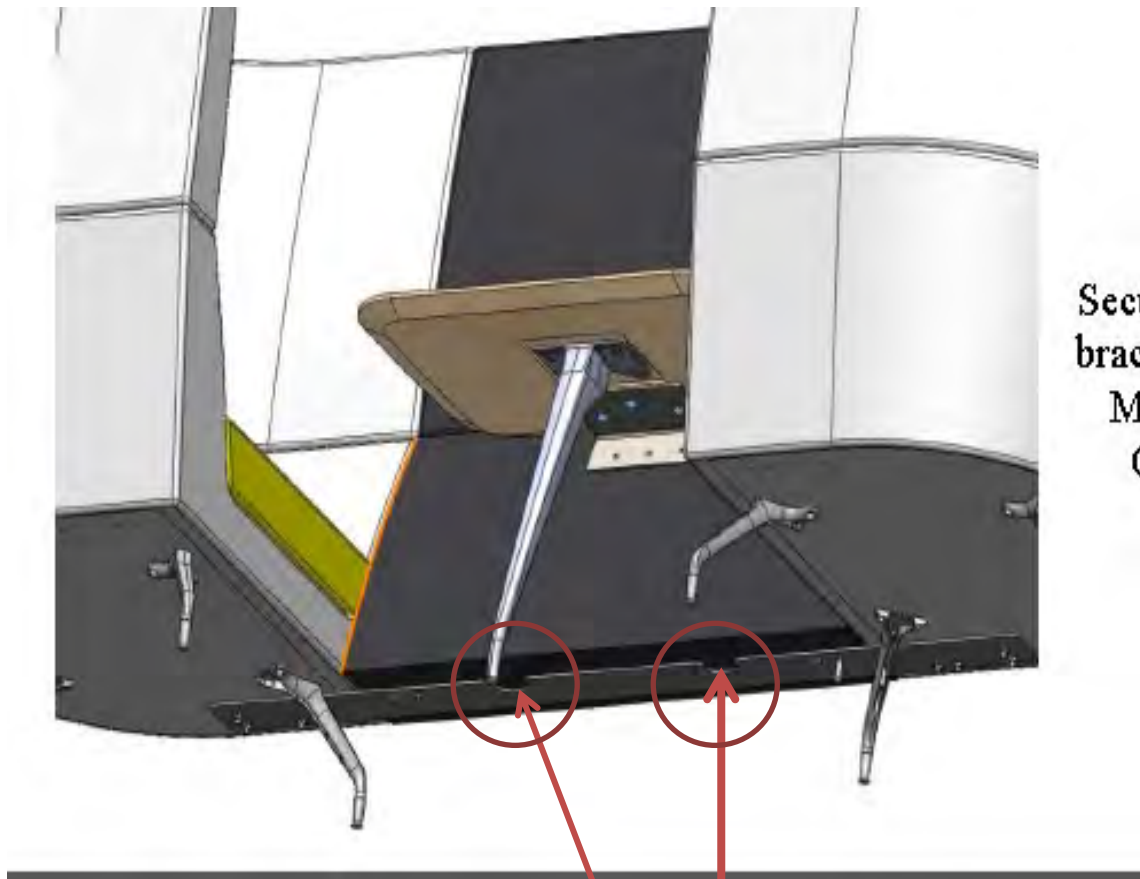


View on underside of screen showing exit points for cables  
On 414mm centres.

TV Bracket mounted centrally onto top screen. Front view.



Position of built in mounting panel within top screen



## Step 2

## Mounting the Wall Plate to the Wall

### Brick, Solid Concrete and Concrete Block mounting:

Use the Wall Plate(a) as a template to mark 6 hole locations on the wall. Three in the top row of slots and three more in the bottom row. Make sure these holes are level and there is at least 6"(150mm) distance between any two holes. Pre-Drill these holes with a 3/8"(10mm) masonry bit to at least 2.4"(60mm) in depth. Insert a Concrete Anchor(x) into each of these holes. Make sure the anchor is seated completely flush with the concrete surface even if there is a layer of drywall or other material in front. Attach the Wall Plate to the wall using 6pcs Lag Bolts(v), 6pcs Lag Bolt Washers(w) and 6pcs Concrete Anchor(x), shown in Diagram 2A.

### Wood Stud mounting:

The Wall Plate(a) **must be mounted to two wood studs at least 16"(406mm) apart**. Use a stud finder to locate two adjacent studs. It is a good idea to verify where the studs are located with an awl or thin nail shown in Diagram 2B. Pre-drill a 2.4"(60mm) deep hole at the desired height in each stud using a 5/32"(4mm) drill bit. Make sure these holes are in the center area of the studs and level with each other. Use the Wall Plate as a template to mark the location of the second hole in each stud. Drill 2.4"(60mm) deep holes using the 5/32"(4mm) drill bit in the marked locations. Attach the Wall Plate to the wall using the 4pcs Lag Bolts(v) and 4pcs Lag Bolt Washers(w).

Diagram 2A

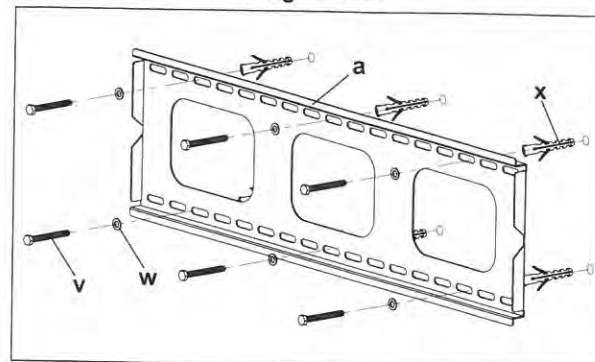
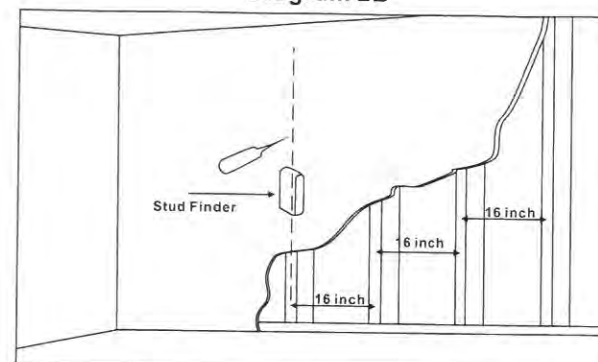


Diagram 2B



## Step 3

## Attaching Monitor to Wall Plate and Adding the Safety Bolts

**Warning: Some TVs may require two people to lift! We are not responsible for personal injury or product damage.**

First hook the Monitor Brackets(b,c) over the top of the wall Plate(a), then let the bottom of the Monitor Brackets rotate to the bottom of the Wall Plate as shown in the Diagram 3A. Use the screw driver to tighten the safety bolts. Then the Monitor Bracket will sit behind the bottom tab on the Wall Plate as shown in the Diagram 3B. **You may have to loosen the safety screw if you change the small tilting angel to large tilting angel, oppositely, you may have to fasten the safety screw again if you change the large tilting angel to small tilting angel.**

Diagram 3A

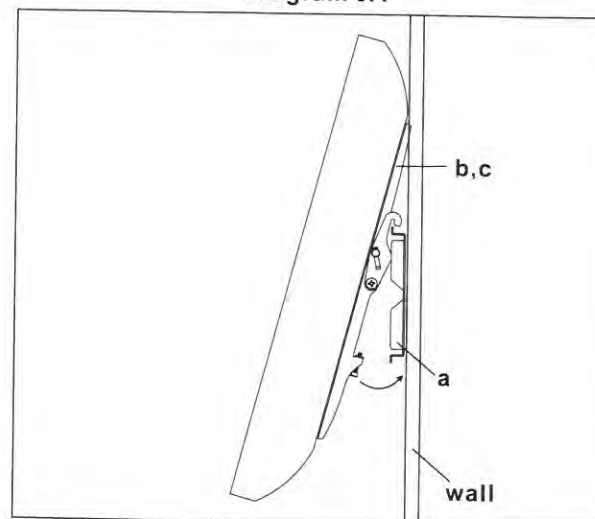
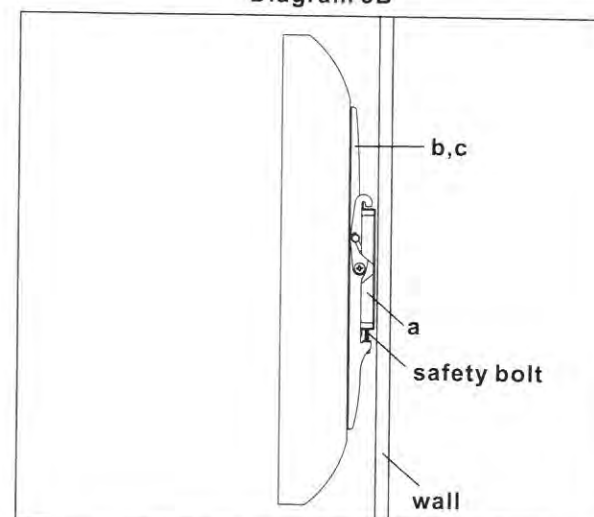
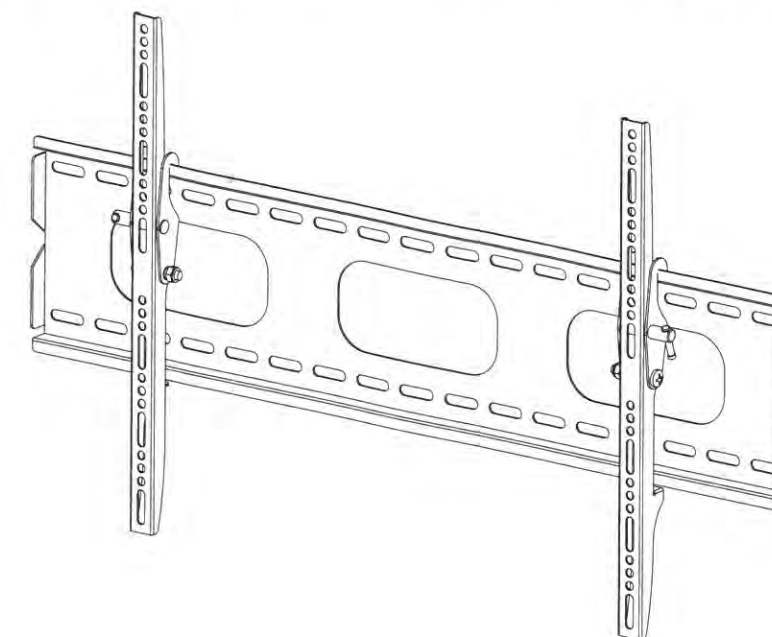


Diagram 3B



**Thanks for choosing our products, enjoy the using.**

# Installation Instruction



## UNPACKING INSTRUCTIONS

- Carefully open the carton, remove contents and lay out on cardboard or other protective surface to avoid damage.
- Check package contents against the Supplied Parts List in the next page to assure that all components were received undamaged. Do not use damaged or defective parts.
- Carefully read all instructions before attempting installation.

## IMPORTANT SAFETY INFORMATION

Install and operate this device with care. Please read this instruction before beginning the installation, and carefully follow all instructions contained herein. Use proper safety equipment during installation.

Please call a qualified installation contractor for help if you:

- If you don't understand these directions or have any doubts about the safety of the installation.
- If you are uncertain about the nature of your wall, consult a qualified installation contractor.

Do not use this product for any purpose or in any configuration not explicitly specified in this instruction. We hereby disclaim any and all liability for injury or damage arising from incorrect assembly, incorrect mounting, or incorrect use of this product.



**WARNING**

## CAUTION!

**This TV mount must be securely attached to the vertical wall. If the mount is not properly installed it may fall, resulting in possible injury and/or damage.**

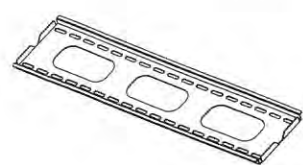
### Tools Required

- 5/32"(4mm) Drill Bit
- 3/8"(10mm) Masonry Bit
- Wrench or Socket Set
- Phillips Screwdriver
- Stud Finder
- Carpenter's Level

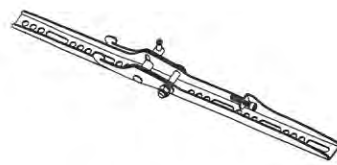
**Note:** The mounting components and hardware supplied in this package are not designed for installations to walls with steel studs or to cinder block walls. If the hardware you need for your installation is not included, please consult your local hardware store for proper mounting hardware for the application.



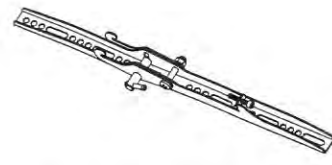
**Supplied Parts List**



(1)Wall Plate-a



(1)Left Monitor Bracket-b



(1)Right Monitor Bracket-c



(4)M4x12 Bolt-e



(4)M5x12 Bolt-f



(4)M6x12 Bolt-g



(4)M8x16 Bolt-h



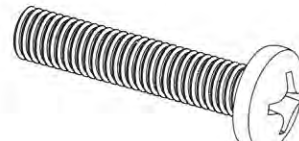
(4)M4x30 Bolt-i



(4)M5x30 Bolt-j



(4)M6x35 Bolt-k



(4)M8x40 Bolt-l



(4)M4 Lock Washer-m



(4)M5 Lock Washer-n



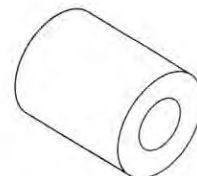
(4)M6 Lock Washer-o



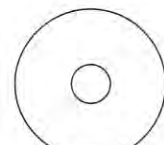
(4)M8 Lock Washer-p



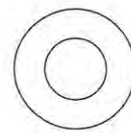
(4)M4/M5 Space-q



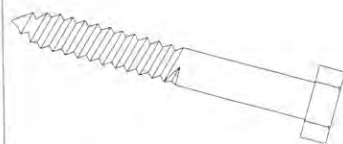
(4)M6/M8 Space-r



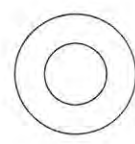
(8)M4/M5 Washer-s



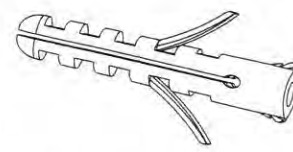
(4)M6/M8 Washer-t



(6)Lag Bolt-v



(6)Lag Bolt Washer-w

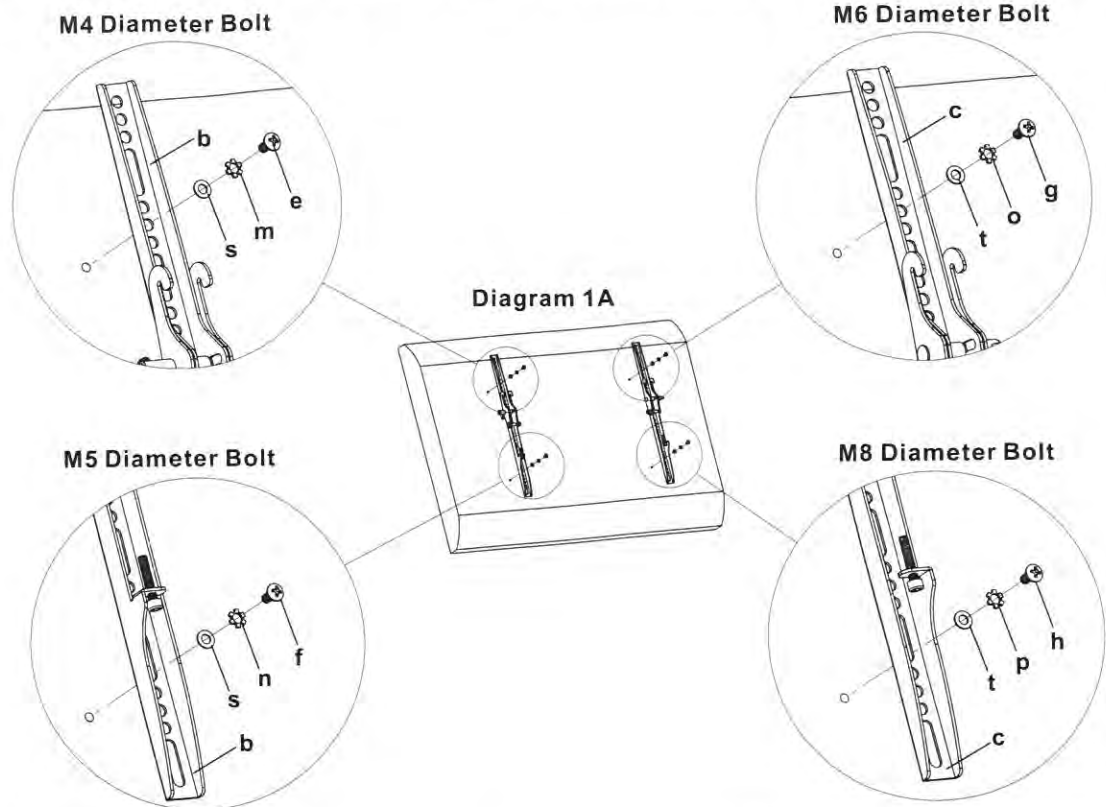


(6)Concrete Anchor-x

**Step 1A**

**Mounting the Monitor Brackets to a TV with Flat Back**

First of all, make sure the diameter of the Bolt(e,f,g,h) your TV requires. Once you have determined the correct diameter, please see the relative diagram as below. You will thread the Bolt into the TV using the correct Lock Washer(m,n,o,p) and Washer(s,t). Please make sure the Monitor Brackets(b,c) are vertically centered and level with each other.



**Step 1B**

**Mounting the Monitor Brackets to a TV with Curved Back**

First of all, make sure the diameter of the Bolt(i,j,k,l) your TV requires. Once you have determined the correct diameter, please see the relative diagram as below. You will thread the Bolt into the TV using the correct Lock Washer(m,n,o,p), Washer(s,t) and spacer(q,r). For the M4 or M5 diameter bolt, you will need another M4/M5 Washer between the Monitor Bracket and the Spacer. Please make sure the Monitor Brackets are vertically centered and level with each other.

