

GENERAL REMINDERS

1. Professors will be responsible to self-jury their students and only submit the best two projects (2) per independently taught class/studio for judging in this competition
2. All final submittals are to be sent to: design4next@gmail.com All submittals are due by December 7th.
3. Submittals must be in PDF format and be **no greater than 20MB in file size** (no min/max on number of pages)
4. As a reminder, all student participants must be currently registered as juniors or seniors in their design program, 5TH year students enrolled into a 5 year Masters program, or in a master's program where there is no bachelor's degree offered or a master's program where the students have no bachelor's degree in design or other previous design experience.
5. Students must submit an entry as an individual, not as part of a team.
6. **All questions must be submitted by September 30th** and all questions must be submitted to: design4next@steelcase.com
7. Each student participating **MUST individually register no later than September 30th** to be considered eligible. Students can register by going to this link: [Student Registration](#)

FINAL - Q+A QUESTIONS + ANSWERS – Questions submitted through September 30, 2022

Q: The square footage allotted for project rooms and team spaces - is that per space or for the total quantity of rooms?

A: The square footage allotment as shown in the program document is for (each individual room) – not the combined quantity. Example: We ask for (3) Dedicated Team Spaces at 250 ft² each. The total space allocation for these (3) spaces would be 750 ft² (not 250 ft² for all three).

Q: There appears to be more square footage available in the suite compared to whats listed in the program. What opportunities do we have to add to the program or increase program areas? or have we miscalculated?

A: Recognizing students are often doing a workplace project for the first time with the NEXT competition, or one of their first, we intentionally provide a generous ratio of circulation to allow for ultimate flexibility for the students to explore their creativity. As you are calculating, please ensure you are allocating the recommended square footage (per number of required spaces)...if there is more than one space required, the square foot requirement is for each space – this isn't the total for all required. Example: We ask for (3) Dedicated Team Spaces at 250 ft² each. The total space allocation for these (3) spaces would be 750 ft² (not 250 ft² for all three). Yes, your students may add to the program or increase the quantity of program areas if doing so meets the students design intent; however, please ensure EACH required space is planned for (per the program required spaces) before adding additional spaces.

Q: What are the typical types of activities that occur in the Inclusive Design Lab? What are the necessary FF&E requirements for this space?

A: The Inclusive Design Lab is a safe, adaptable space where NEXT conducts user center research for NEXT products with traditionally excluded or marginalized communities. The lab needs to be flexible and open to change, as it will constantly change to mimic different environments (I.e. office, residential, public, and learning spaces) and stress test NEXT robots functionality and navigation paths with unique users (see ID Case Study, Floor Cleaning Robots for example:

 [ID Case Study, Floor Cleaning Robots.docx](#)).

NEXT recognizes the value of partnering with diverse perspectives, and hopes to bring together people of different races, ages, cultures, genders and sizes, people who have visible and non-apparent disabilities, people who are neurodivergent, and people who communicate differently. NEXT believes that this space and commitment to inclusive user-centered research will accelerate innovation, and create NEXT products that support any and every user. The thought is that the inclusive tech lab will support exploration similar to what this company was doing in a public and shopping mall.




FFE Description for The Design Lab: Furniture to accommodate [2] researchers to be meeting with/observing 1-2 external consultants concurrently, as well as, one to two individuals from traditionally excluded and/or marginalized communities within the lab. The purpose is to understand their user experience by testing their use of NEXT prototype products. Provide adequate open space to conduct user testing interactions with robot prototypes.

Q: What type of activities or examples of what will be done in inclusive design labs?

A: I just responded to a similar question that hasn't been published yet as part of the Q+A. Here is the response I provided so I am consistent in response.

The Inclusive Design Lab is a safe, adaptable space where NEXT conducts user center research for NEXT products with traditionally excluded or marginalized communities. The lab needs to be flexible and open to change, as it will constantly change to mimic different environments (I.e. office, residential, public, and learning spaces) and stress test NEXT robots functionality and navigation paths with unique users (see ID Case Study, Floor Cleaning Robots for example:

 [ID Case Study, Floor Cleaning Robots.docx](#)).

NEXT recognizes the value of partnering with diverse perspectives, and hopes to bring together people of different races, ages, cultures, genders and sizes, people who have visible and non-apparent disabilities, people who are neurodivergent, and people who communicate differently. NEXT believes that this space and commitment to inclusive user-centered research will accelerate innovation, and create NEXT products that support any and every user. The thought is that the inclusive tech lab will support exploration similar to what this company was doing in a public and shopping mall.



FFE Description for The Design Lab: Furniture to accommodate [2] researchers to be meeting with/observing 1-2 external consultants concurrently, as well as, one to two individuals from traditionally excluded and/or marginalized communities within the lab. The purpose is to understand their user experience by testing their use of NEXT prototype products. Provide adequate open space to conduct user testing interactions with robot prototypes.

Q: Can spaces be split and enlarged in quantity? While keeping the required amount of Sq. Ft. needed but split between more than 1 space. For example, can we plan two resource rooms, splitting the 100 sq ft requirement in the space summary into two 50 sq ft spaces.

A: This can be accomplished if both spaces you provide meet the requirements for the space in BOTH locations. If your students can meet all of the requirements for the required space in half of the Sq. Ft. they are welcome to do so.

Q: Do we need to build/generate sample products for the brand to use in presentation?

A: All that is required for the competition is to create a brand logo for NEXT. Any additional sample products that are created to support the design intent and/or support the design story/narrative are at the discretion of the student. This isn't required; however, if provided/developed by the student, it is permitted. Our only caution is students spending too much time and energy on this and not enough on designing the space that aligns with their concept and meeting the requirements for NEXT.

Q: Can more spaces be added, than what is required for the space summary? if the sq ft requirements are set in stone, could we add additional spaces that are not in the set quantities in the space summary provided. Or if there's a space that we feel is needed that isn't listed, can that be added. I know circulation and the sq ft available will impact if things can be added/removed. I wanted to see if there is wiggle room to branch out or if they are strict on the set spaces.

A: This was already addressed in our published Q+A; however, your question is nuanced a bit different so we will answer. Yes, this would be permitted if this meets the students design intent; however, please ensure EACH required space is planned for (per the program required spaces) before adding additional spaces.

Q: Is a budget an element needed to be highlighted, or is there no set budget?

A: There are no budget requirements for this competition. The students have the freedom to be as creative as they wish without consideration of budget.

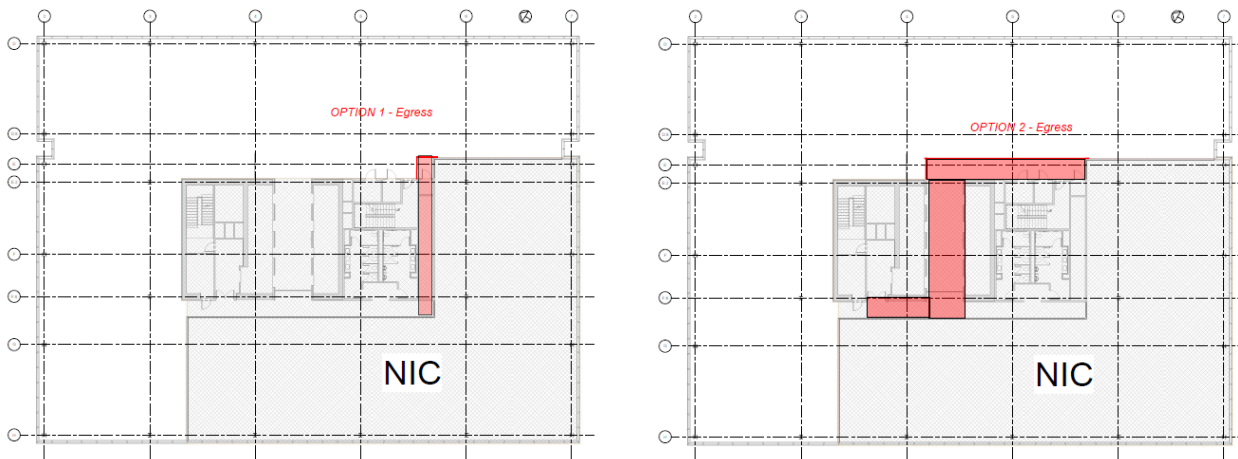
Q: Will this space be open to the public (Tours, Demonstrations)? What kind of users will be most utilizing the retail mock-up space?

A: This was answered on **page 2** of the most recent Q+A that was published (dated 9.23.22). Please review for answer regarding visitors; however, this will not be open to the public. For Retail Mockup Space, please see **page 10** of the 9.23.22 published Q+A document for the intended use of the space; however, the users of this space will be a combination of the following individuals; however, not all at the same time. Those that will use this space to evaluate potential retail mock-ups are: (UX Designer, Product Marketing Specialist, Product Inclusion Designer, Retail Channel Manager), and buyers from potential retailers.

Q: Do we need to establish workplace policies for NEXT and how they influence the design of the space?

A: This is not a requirement of the competition; however, if this reinforces a student's design concept, a student is permitted to establish this to support their design and narrative for their space.

Q: See attached egress option PDF, would you like students to use the Z corridor to provide 2 means of egress (Option 2) or Option 1 with removal of building closets?



A: per earlier responses to similar questions regarding egress in the NIC areas, your students are free to use either option they choose if this helps them design the space. We do not want to be an inhibitor to their design thinking or creativity and though this area is considered NIC; they can make any alterations as necessary to support their design as well as providing a teaching opportunity for faculty.

Q: Should we assume for all spaces that require more than 1, that the square footage is per (each), and should be doubled? For example, the (2) Projects room don't say "each", and show a total 300 sqft. We are assuming there needs to be two for a total of 600sqft. Is this assumption correct?

A: Your assumption is correct. For any required spaces that have a quantity of more than one, you need to allocate that amount of SQ FT for each one. The SQ FT allocation shown is for (each/individual) space. Therefore, your example is exactly how you should calculate the space allocation for these spaces.

Q: Can we use furniture from the Steelcase website that is not designed by Steelcase (ex. WestElm, Coalesse) ?

A: You are welcome to use any of the products from Steelcase, the Steelcase owned family of brands, or any of the brands that are Steelcase partner brands. Here is a snapshot of those brands: <https://www.steelcase.com/furnishings/>

Q: Just to confirm: For the requirement “A **minimum of one elevation section** is required.” This diagram/drawing can be an elevation only? In last year’s requirements, a section was needed to show relationships between floor levels at the stairs. Since this is a single-story space, would an interior elevation meet the requested requirement? Or, does there need to be a section through the horizontal and vertical structural elements showing wall types, flooring composition, etc.?

A: For the purpose of this year’s competition, and interior elevation is perfectly acceptable.

Q: I have instructed students to incorporate a raised-access floor. Within the Revit model, they are using LEVEL 6 as the structural floor and FINISH FLOOR as the level that the serves as the plane for the raised-access floor. We are incorporating appropriate ramps and some are using Steelcase’s Underscore, making adjustments to the level heights based on the specifications for that floor system. Is this acceptable?

A: Yes, this is acceptable.

Q: Can you tell us more about the constraints on using power poles? We understand that there are often better solutions, but we were curious to hear more on the reasoning for this constraint.

A: NEXT would like to eliminate power poles as visual distraction. Please use floor cores or wall mounted outlets for power.

Q: Can you tell us more about how NEXTers collaborate?

A: They collaborate in person with their internal team (their own department), they work in person with other departments in this Boston office, and they collaborate virtually with others in other locations.

Q: How do the three directors work in relation to internal and external professionals? We are also curious to hear more about external relations and how outward facing the directors need to be.

A: Internal: All three directors work with their direct teams as well as their indirect teams (other departments) in the Boston office. These three directors collaborate together approximately 60 percent of the time.

External: The Design Director and Product Inclusion Director work with external audiences 20 percent of the time (both in the Boston office and virtually). The Development Director rarely works with external audiences.

Q: We are curious how and if there is a hierarchy in the organization with employees reporting to the directors. It is a little unclear because not every unit has a director and one unit has two directors. Do the three directors in the private offices work closely with the internal teams?

A: NEXT has relatively flat organization. The directors have direct reporting relationships with the employees in their departments and the departments without directors in the Boston office are lead by directors in a different location. Outside of the three directors, there is no hierarchy among the rest of the NEXT employees in the Boston office.

Q: Do they manage projects across the office that engage workers from across teams?

A: Yes. All NEXT projects should be considered as leveraging all of the departments in the Boston office. They are a multi-disciplinary, collaborative organization.

Q: My group of students has one final question. Can spaces be designed with more area than the original program requires? Example: a meeting room requires 300 SF per the program, but the student designs it to be 500 SF.

A: Yes, if this meets your student's design intent, this is permitted. Please ensure all required spaces are planned and the minimum SF for each is achieved before adding additional SF.

Q: A few more Q+A questions that we would love to clarify if possible. See attached PDF for questions and associated images.



A: What you are seeing in the photo along the windows are actually the base building heating convectors. However, if these were inadvertently removed from the Revit file when all interior architecture/furniture was removed, there is no need to add them back for purposes of the competition. If they are shown on the Revit files, then they can remain. We specified the access floor to match the 7" height of the units and sill height of the windows; however, as mentioned in prior Q+A, the raised access floor was removed for the competition. These units along the perimeter are for heat only. The air conditioning is delivered from Trox chilled beam systems suspended in the ceiling; however, for the competition, there is no need to add these as they will not be evaluated as part of the competition; however, if this is something you would like to incorporate as part of your instruction of your students, you are welcome to include them.

Q: For dedicated team spaces, there should be three at 250 sq. ft. Does that mean 250 sq. ft. total or each? Same for project rooms, it says 2 at 300 sq. ft. - is that a total? Other things said " 'x' sq. ft. each" so I'm assuming these two are totals, as they did not say "each", but I'd like clarification.

A: These would be for each. Therefore, you would multiple the recommended SF times the number of required spaces. In your specific examples, the 3 dedicated team spaces at 250 SF each would account for 750 SF. The 2 project rooms at 300 SF each would account for 600 SF.

Q: Can we spec products from Steelcase's family of brands?

A: You are welcome to use and of the products from Steelcase, the Steelcase owned family of brands, or any of the brands that are Steelcase partner brands. Here is a snapshot of those brands: <https://www.steelcase.com/furnishings/>

Q: Do workstations need to be open desk setups or can we include stations that are more loungy, or even enclosed? Also, the requirements state each workstation needs 2 monitors- do they both need to be built into the design or can one monitor and space for a laptop count?

A: As we state in the program, “Consider designing and providing a diversity in configuration and postures for the workstations by providing the occupants choice and control given their specific tasks of the day”; therefore, you are more than welcome to provide a range of solutions for the workstations. Please ensure each solution you design meets the SF requirement as stated in the program. Considering this will be used as a primary workstation, you should consider providing an ergonomic seating solution (ie: “office chair”) for these applications. You can have some solutions be more enclosed if this meets your design intent; however, please know these shouldn’t be fully enclosed and therefore making it a private office and/or phone room solution. Remember, each individual is part of a team and one of NEXT’s design drivers is to “increase employee engagement, collaboration and productivity.”

For these workstation, two monitors are required; therefore, a laptop does not count as one of the monitors. Per the program, the NEXT employees will be using laptops as their computer to connect to the monitors.

Q: Is there a fabrication area on site that needs to be included?

A: No, consider that would be done at their HQ location.

Q: When requiring rendering for certain rooms, does that mean it must be rendered in Revit with digital selections or can you render via hand drawing or photoshop?

A: You can render however you choose, as long as the rendering is a perspective view. Please recognize, the judges will be viewing these rendering on a computer screen; therefore, we suggest you provide the rendering that conveys your design intent the best.

Q: Is it permissible to add a unisex toilet room and/or other plumbing? Can this include the addition of hand washing stations in the work café and mother’s room?

A: Your students are welcome to do this if they wish; however, it isn’t required to do so. Also, please ensure all program requirements are met before adding anything additional.

Q: Is it permissible to change the vocabulary used in the program to be more inclusive? Specifically, can the mother’s room be renamed to parent’s room to be inclusive of non-binary parents?

A: Yes, you are welcome to make this name change; however, please read the “function” of the space as the stated need for nursing mothers needs to be met.

Q: We appreciate the clarity on the retail mock up. We were yet wondering if this space is intended to be forward-facing (for visitors to see) or more back-of-house (for designers/engineers) or if it can potentially be conceptualized as an experimental mock-up space for both design teams and visitors to experience.

A: This space is not intended to be a public or forward-facing space. Those that will use this space to evaluate potential retail mock-ups are: (UX Designers, Product Marketing Specialists, Product Inclusion Designers, and Retail Channel Managers). The only external visitors will be buyers from potential retailers on an appointment only basis.

Q: My students have different takes on which individuals in the organization should be grouped together in the engineering department. The brief appears to have the Prototype and Design/Development Engineer in a separate unit

for the “Test / Prototype / Design Lab”, but would these individuals also be considered members of the “Engineering” team and need proximity in the workstation layout to the engineering team?

A: For the purpose of this competition, consider anyone with an engineering title to be considered as part of the overall engineering team.

Q: Do we know if the curtain walls of the building will be treated with window films that prevent glare?

A: You can assume window film has been provided to reduce glare.

Q: Also is there skylight from the ceiling, and if not, may we install skylights?

A: This is not the top floor of the building; therefore, there are no skylights and installing them isn’t feasible.

Q: Can the curtain wall be modified to create outdoor space?

A: No, that would not be permitted.

Q: Does the NIC tenant require access to both stairs? If so, can that access be from the NIC corridor instead of the in-scope suite?

A: For this competition, consider that nothing needs to be modified for the NIC area. Therefore, you do not need to provide access to both stairs for the NIC area.

Q: Our goal is to accommodate all program elements, confirming that we can combine some functions together into a combined space.

A: As long as the program requirements are met, this would be permitted.

Q: Can we also get autocad drawings for this floor?

A: There are AutoCAD drawings available for download in the Resources section of the NEXT website: <https://www.steelcase.com/about/information/architects-designers/next-student-design-competition/#resources>

Q: Are there photos of the space available?

A: Students can do a Google search for photos of this address online. There are also a few photos of this space on Steelcase.com: <https://www.steelcase.com/find-us/locations/americas/boston/>

Q: Is the retail mock up space a “showroom” of sorts? Should we include things like branding, pricing, etc? Will it can customers be allowed into the space if so?

A: This space is not intended to be a public or forward-facing space. Those that will use this space to evaluate potential retail mock-ups are: (UX Designers, Product Marketing Specialists, Product Inclusion Designers, and Retail Channel Managers). The only external visitors will be buyers from potential retailers on an appointment only basis.

Q: Do the inclusive design lab and the home design lab need to be completely separate spaces? They are both customer study Based spaces and it seems like the experiments and results would overlap and be shared use between the two so are these spaces allowed to be a combined space?

A: For the purpose of this competition, NEXT would like these to be separate spaces.

Q: Can the mutual data filing room be shared between the two.

A: If you are referencing the Resource Center, this space is to be shared between all NEXT employees. We are unsure of your reference to a data filing room.

Q: Can we create some outdoor space by removing the curtain wall?

A: No, that would not be permitted for this competition.

Q: Our students are interested to learn in past years... has Steelcase found influence from the student work or developed new products because of the work?

A: Though we find the work of the students compelling and inspirational every year, this competition does not influence any of Steelcase's work.

Q: There are spaces in the program referred to as "secure". Does they mean it has to be enclosed behind solid walls, or can it be secured in another way, i.e. can materials be stored in file cabinets? Could the walls be made of glass and still be considered enclosed?

A: The areas with this requirement need to provide for visual and acoustical privacy and should be considered a fully enclosed space. Please review the statement provided for the Function of these spaces – we address the ability to use glass.

Q: Is there more detail about the retail space? What will be displayed?

A: This space is intended to be a space to mock-up different retail space concepts for where the NEXT appliances will be sold in a retail setting (ie: in a store, etc.). The experimentation is merely meaning more than one mock-up concept could be explored in this space at the same time.

Q: Can we add items to the inside of the surface glass of the space?

A: Yes

Q: As the request is to use only Steelcase or Steelcase affiliated furniture and this might change or be added to on a somewhat regular basis, or even during the course of this competition, can you please provide a list of Steelcase affiliated furniture companies that we are allowed to use?

A: You are welcome to use any of the products from Steelcase, the Steelcase owned family of brands, or any of the brands that are Steelcase partner brands. Here is a snapshot of those brands: <https://www.steelcase.com/furnishings/>

Q: Can you please give a time on Dec 7 that submittals are due or are we to assume midnight in our local time zone?

A: Please review the Contest Background and Judging Criteria document in the Resources section of the NEXT website: <https://www.steelcase.com/about/information/architects-designers/next-student-design-competition/#resources> It states the deadline is 5:00pm PST on Wednesday, December 7th the submission must be submitted by your professor.

Q+A QUESTIONS + ANSWERS – Questions submitted through September 23, 2022

Q: Can more clarity be provided around what type of consumer robotics NEXT is developing so that students can more easily envision the workplace requirements and culture?

A: This can be at the discretion of the student since NEXT is a fictitious client. Please look at the companies listed as inspiration on page 26 of the program document and the student can take any liberties to create their narrative from these companies as inspiration.

Q: What is the Home Office Lab? How is this space programmed and used?

A: This question has been answered. Please review the Q&A document (and distribute to your students). The first week of Q&A was issued the morning of September 19th to all faculty participating and you should have received the email, and this is also available for download on our NEXT website in the resources section. The answer is on page 7 of the published Q&A from Questions through September 16th.

Q: In the first "answer" document, you note that students should plan a ceiling height of 12'-2'3/4" for slab to slab height. Can you explain what this exposed ceiling would look like, such as will there be trusses and beam supports that students need to plan around? If so, can you provide a height for the lowest obstruction.

A: Unfortunately, we do not have that information available as it was eliminated from the Revit file once it was provided to us from the building owner. Based on this, students are free to make any assumptions as this will not be evaluated for judging and consider the height of lowest obstruction to be the stated 12'-2' 3/4"

Q: What type of visitors will be frequenting this NEXT facility? Will they be potential retailer partners or research associates? As this is a research and development hub, is there concern about visitors having exposure to research data and research activities? Shall students plan to control the movement of visitors within the facility?

A: We anticipate there will be visitors on occasion; however, there will be no visitors without appointment. Visitors will include suppliers, retailers, contracted consultants, and NEXT teammates from other locations. The only rooms that will be out of view of any visitors will be the Project Rooms per the description in the program.

Q: Can you explain what the curtain wall looks like? At what height do the windows start in the elevation and how tall are they? Are there any HVAC elements located along the exterior walls, or is this all in the ceiling plenum?

A: To our knowledge, the windows are floor to ceiling; however, students should represent what is shown in the Revit file. Unfortunately, we do not have that information available as it was eliminated from the Revit file once it was provided to us from the building owner. Based on this, students are free to make any assumptions as this will not be evaluated for judging.

Q: What is the purpose of the NIC space? Can we assume this is another office space?

A: Yes, for this competition, the NIC area that is not part of the Core Building elements should be considered to be occupied by another tenant.

Q: Are there any specific branding packaging that need to be followed?

A: No, this is at the discretion of the student as they are developing their logo/branding for NEXT

Q: Since this is a Steelcase project and we must use their things, what do we do if we find something on the Steelcase item, but it does not have a model (BIM)?

A: I'll assume this is for one of the Steelcase (Partner) of brands where you are not finding Revit/AutoCAD models? If needed, your students may request one by sending a request to revit@steelcase.com however, the response time may not be immediate.

Q: Which direction is the building office facing?

A: This can be determined by using Google Earth and/or Google Maps

Q: How in depth does the robot design challenge need to be?

A: We are unsure of the meaning of this question? If your students are asking how in depth the robots (ie: what type of robots, etc.) need to be articulated in this competition, there are no requirements on how much this needs to be articulated. This can be at the discretion of the student since NEXT is a fictitious client. Please look at the companies listed as inspiration on page 26 of the program document and the student can take any liberties to create their narrative from these companies as inspiration.

Q: Can the doors on the closets and auxiliary spaces in the NIC area be changed? Can door locations be altered? Can doors that swing into our space be changed so that they swing into the closets/NIC spaces?

A: Yes, this can be changed as needed.

Q: Can students include in their design more workstations than the programming requires?

A: Yes, this would be permitted if this meets the students design intent; however, please ensure EACH required space is planned for (per the program required spaces) before adding additional workstations.

Q: Also, can students include in their design additional spaces in their design? For example, having two Mother's Rooms rather than the required one.

A: Yes, this would be permitted if this meets the students design intent; however, please ensure EACH required space is planned for (per the program required spaces) before adding additional spaces.

Q: A few more Q+A questions that we would love to clarify if possible. See attached PDF for questions and associated images.

A: We recognize how the undeveloped spaces in the NIC area can cause confusion and/or concern for your students and could also make a challenge for your teaching as an educator. For this purpose, you may remove the two walls I have circled below and that should eliminate any issues of accessibility from the other tenant space. Or, if the students would like to further develop with the options you provided, that is also permitted. Please note, nothing in the NIC area will be considered as part of the judging/evaluation process.

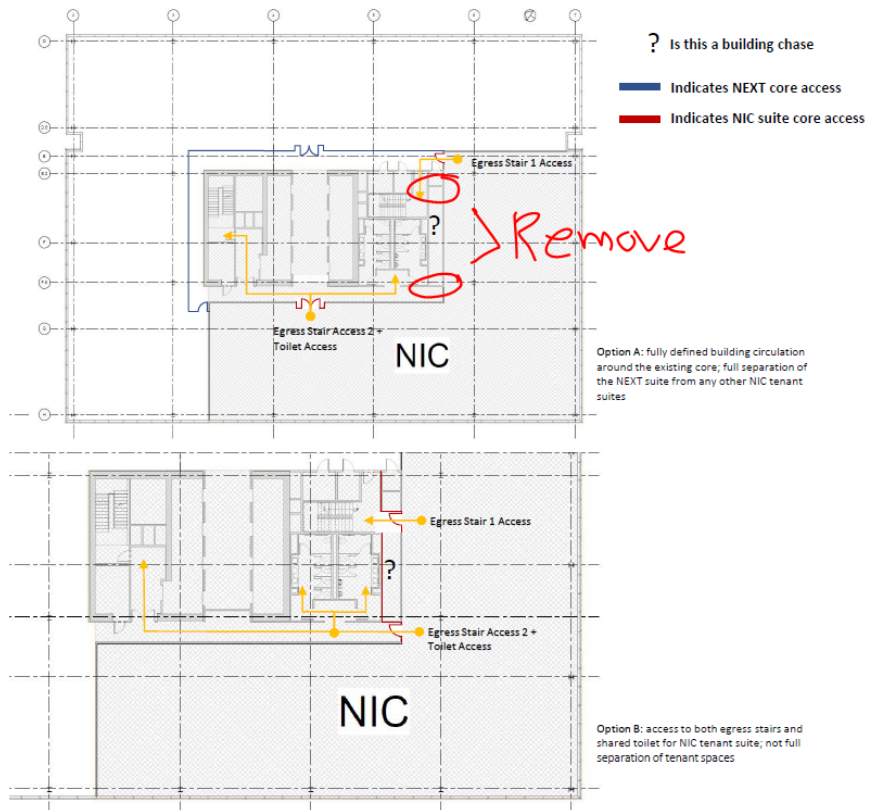
Thank you for clarifications from Q+A number 1 (dated 9/16/2022). This set did clarify several of our questions. However, our students do still have a few questions.

Q: Although the final question/answer directed students to "...consider that everything in the NIC area (including stairs) meets all egress and code requirements" there is still concern among our students about a few key items related to core and circulation.

- 1) In the current configuration there is no separation of suite access from the NEXT space and the NIC tenant suite. This is particularly acute if the elevator lobby is indeed the main access to the 6th floor (as specified in the 9/16/2022 Q+A).
- 2) In the current configuration there is no access to shared toilet rooms or both egress stairs for the NIC tenant space.
- 3) In the current NIC tenant suite zone there is an enclosed area that reads as either a narrow corridor or a building chase (designated to the right with the large ? mark). If it is some sort of hallway (or tenant general space) then it would be able to be utilized for basic egress access (per Option B). Are you able to clarify?

Our students are requesting the option, in particular, to generate a more defined floor circulation around the building core to allow for separation of the suites and to allow access to key elements to the fictitious NIC tenant (option A) OR at the minimum an understanding of how the NIC tenant suite might at least have full access to egress and toilet rooms even if the two suites are not fully separate from one another with regard to elevator lobby access (option B).

We do realize that the NIC does not matter for competition purposes, but ensuring full access to egress and building amenities is a key insight that our students have had about the existing conditions. So, as long as there is not an issue from the competition standpoint, can we give them the freedom to define the core circulation/access a bit more (as loosely shown) in something like option A or option B?



Q: According to page 3 of the file "NEXT 2022 OFFICIAL RULES Student Design Competition," number 7 states that the judges will review the work on a computer screen. Also, the file size shouldn't exceed 20MB. The number 9's v and vi requests scale at 1/8"=1'-0". According to the project site, the 1/8" scaled floor plan needs ARCH C size paper at least. Using ARCH C size paper and keeping 1/8" scale, I don't think any proposal with high-quality images will not exceed 20 MB. If you are going to review student work on the screen anyway, you may need a drawing that has a scale bar attached rather than one that corresponds to the actual scale. Could you make it clear?

7. Files should be in **PDF format** and be sized for easy review by our judges on a computer screen **(FILE SIZES SHOULDN'T EXCEED 20MB)** It is a better experience for the judges to review as a series of slides (in landscape format) versus submitting as one or two page "virtual boards" that must be zoomed in on for review.
- v) Rendered floor plan with rooms labeled and furniture shown. Scale: 1/8" = 1'-0" (0.3175cm = 0.3048m)
- vi) Reflected ceiling plans are **(required)** for the **Work Cafe and Reception areas**. Include a legend with ceiling heights identified. Scale: 1/8" = 1'-0" (0.3175cm = 0.3048m).

A: You are free to adjust the scale. Yes, judges will be reviewing the submissions in PDF format on their computer screens. Yes, the file submitted must be 20MB or less.

(PRIOR) Q+A QUESTIONS + ANSWERS – Questions submitted through September 16, 2022

Q: I have a class of 25 students. Am I correct in understanding that they all can participate in the competition and they all must register but only 2 can make an official submission on December 7th.

A: Yes, thank you for having your students participate in our student design competition. Yes, most programs that participate in NEXT incorporate this into their studio curriculum. Each of their students in studio class participate as part of the class projects and they all individually register using the link provided. However, since there are often more than 1,000 students participating across all of the programs, we cannot review that many entries. Therefore, we ask every independently taught studio to self-jury and submit the top two submissions into the competition for judging.

Q: Is the main access to the 6th floor from the elevator lobby. The class was wondering if reception should be in this location.

A: Yes, the main access to the 6th floor is from the elevator lobby.

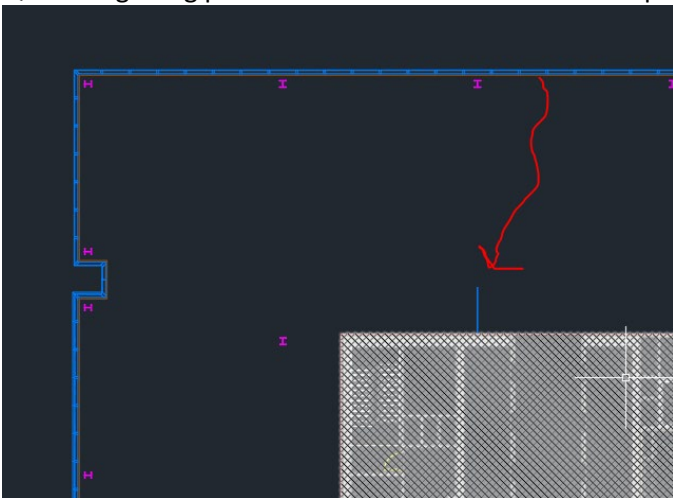
Q: In reading through the rules, I understand that there is a cap on 2 project submissions per school. My studio is 9 students. Please confirm if on or before 9/30/22 each of the 9 students is required to fill out the REGISTRATION FORM to be considered?

A: Please have all (9) of your students participating in class register via the link we provided.

Q: In regards to the 9/30/22 registration milestone date - on that date, do we have to identify the (2) students who will submit final project on 12/7/22, or is the intent of the registration period simply for a school to indicate that it intends to submit (2) student projects (and not commit to an actual student project at that early date)? I ask this question simply to confirm if we have the ability as a school to have all students prepare and present their work to us before we as a faculty select the (2) projects that will represent our school.

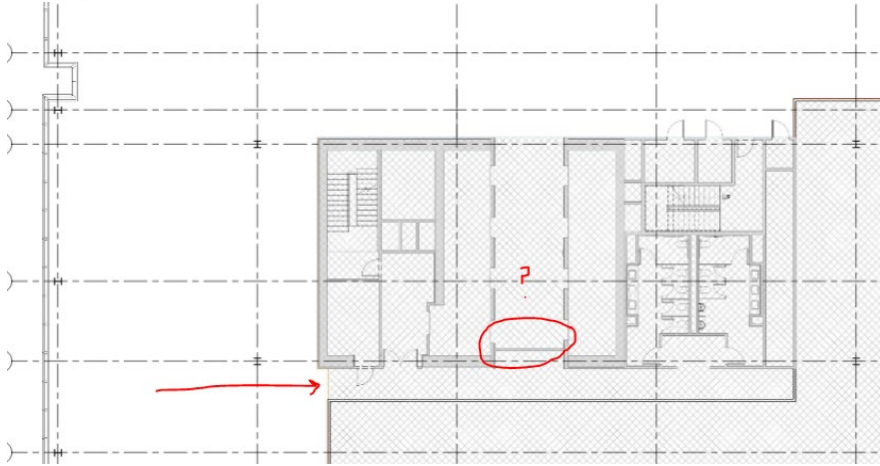
A: You do not need to provide us the (2) names of those you will submit into the competition for judging prior to the deadline of 12/7/22. Each program is to do an internal self-jury of all of the students participating projects in advance of the deadline and decide which two they will submit for judging. We do not need to know who they are and to keep it even more confidential, we have the submissions sent to a third party (gmail account) who will save them as a different file name (ie: 22X, 34Q, 97C, etc) and remove any identifiers. As we get close to the submission deadline of December 7, 2022, we will provide explicit instructions for submitting the two projects for judging.

Q: Is the glazing panel attached to elevator wall a misprint? (see image below):



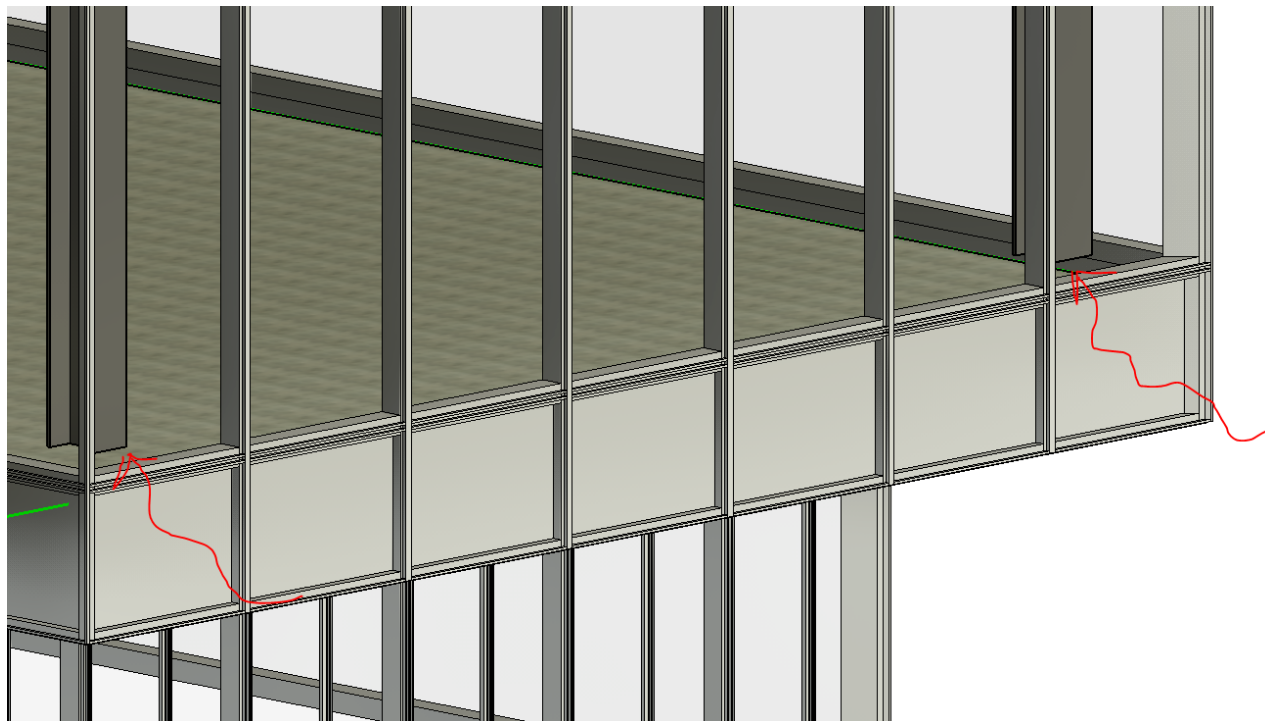
A: This glazing panel is an error that was made by the original modeler of the file that we did not catch. You can remove this from your files.

Q: When a person exits the elevator, there is a wall shown that would prevent them from going directly to the bathrooms/bathroom corridor. Is it correct that the only opening to the bathroom corridor is at the plan left (see image below)



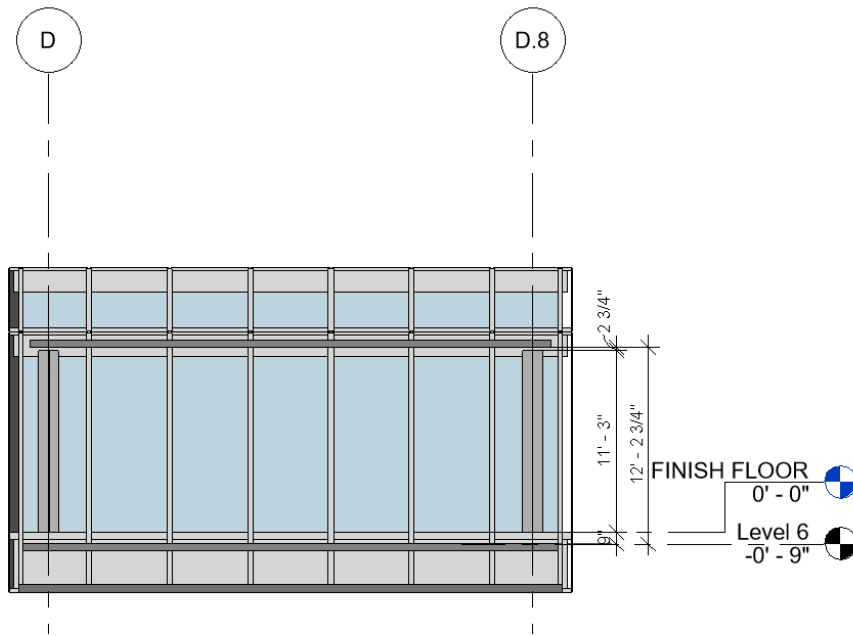
A: This is part of the current built condition; however, this is also in the NIC area. You are free to remove this if you wish.

Q: What is the maximum distance from the finished floor to the unfinished ceiling? In the models, there is no actual finished floor so the support columns are floating. (see image below)_

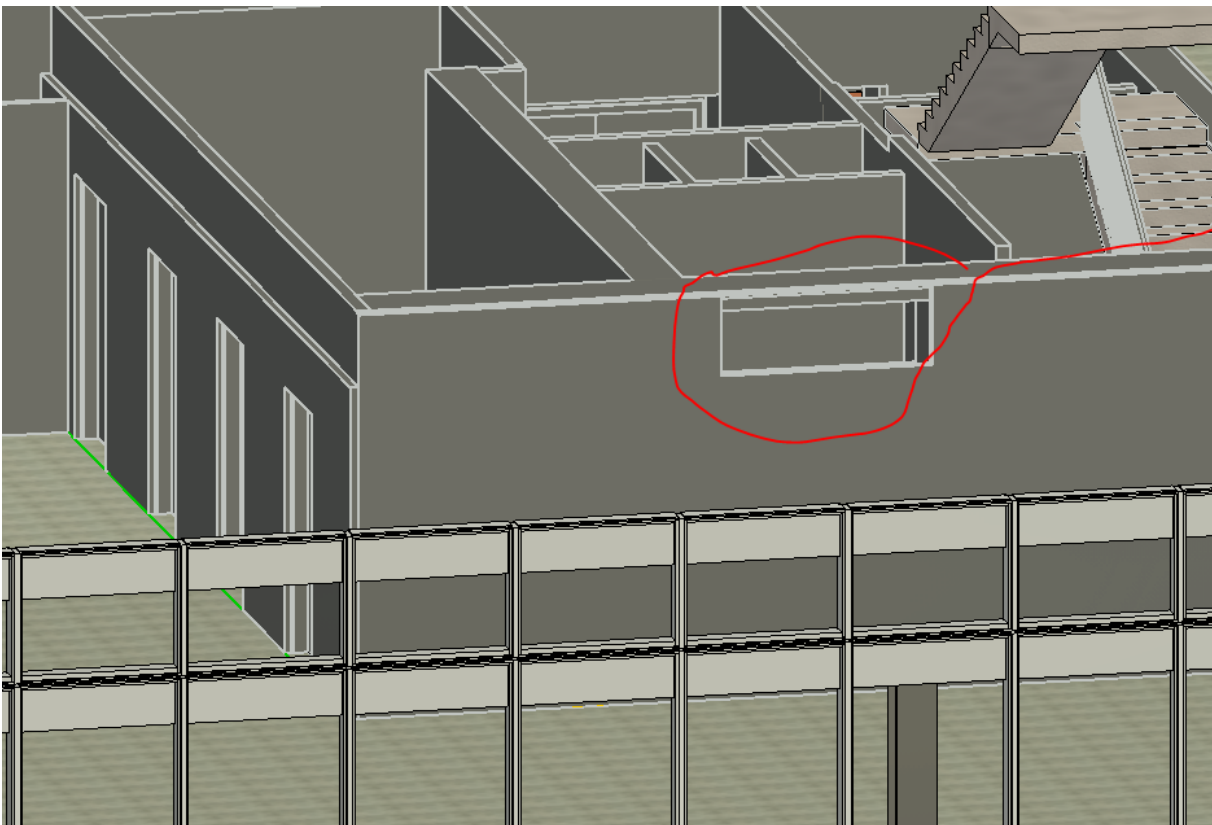


A: When we took the Revit file provided to us by the building owner, we took it back to the base building with no modifications. There was an added raised floor that is causing the issue and apparently there is some condition/treatment at the top that is showing the 2 ¾ space. Therefore, we have provided this elevation that shows

the dimensions. Please use the 12'-2 3/4" dimension as your slab to slab dimension for the competition. Please see below:

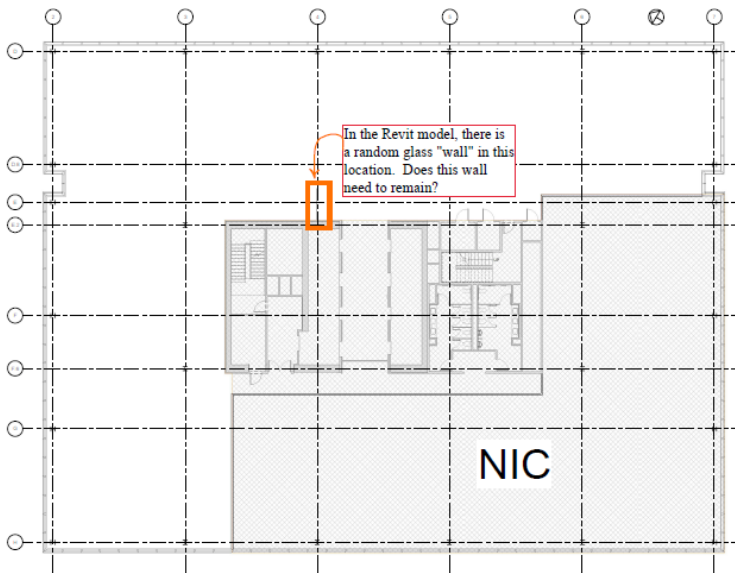


Q: Can this opening at the upper wall be removed? (see image below):



A: Yes, that would be permitted.

Q: My students have asked about a wall included in the Revit model. They want to know if they can remove it or if it should remain and be integrated into the design.



A: This was an error from the original developer of the Revit model and we didn't catch it. Please remove it.

Q: Student Registration: In our school program, all 57-3rd year design studio students will engage in the Steelcase Campaign project as a studio project, and 2 candidates will be chosen during the final review at the end of the semester. In this case, what should be done about the rule that students must register by September 30th?

A: All 57 students should register if they are participating in class doing our competition prior to the September 30th deadline.

Qa: Option #1: Following the completion of all registrations, may the professor submit the only works of the final two candidates to the organizers of the Steelcase competition?

A: Yes, that is the process. You will self-jury from all 57 and select your top 2 to submit. However, if your 57 are divided into two studios that are independently taught, you may submit (4) from your program. If three studios, (6) from your program...etc.

Qb: Option #2: Would it be more appropriate to request access to the master page from the Steelcase competition organizer before the deadline of December 7th?

A: NO

Q: Project analysis: Will imaginative technological concepts (that may not currently exist) be tolerated for the sake of exploration/ idea proposition?

A: Yes, however, before spending too much time ideating on the futuristic concepts, please ensure they are spending enough time on the program and meeting those requirements. Judges will be mostly concerned with the plan, the

concept, how design is articulated in the space, and how furniture is incorporated to meet the clients needs and design intent.

Q: Project analysis: There is some contrasting information given about hybrid workspaces which I would like to be clarified. If there are core hours that allow the employee to be online or in office (as stated on page 10), why would someone choose to be in office, if we are seeing that 45% of people prefer to work at home? Is it possible to get core hours to understand how many people are in the office and how often do they have to be there?

A: Thank you for your question. On page 10, we are merely providing a trend for students to understand what (may) be happening in the workplace; however, NEXT wants to maximize employee attendance in their new workplace and make the destination “worth their commute” especially since this is a research and development center. The CEO of NEXT wants to facilitate more (in-person) collaboration because they believe this will greatly impact their company culture in a positive way and increase the speed of innovation. NEXT also wants this space to facilitate more cross-mentoring of theirs and to foster deeper relationships across teammates.

Q: Specification: What specific mechoshades are being provided? What do they do for the design? Are we able to customize the colors of the mechoshades on the exterior windows?

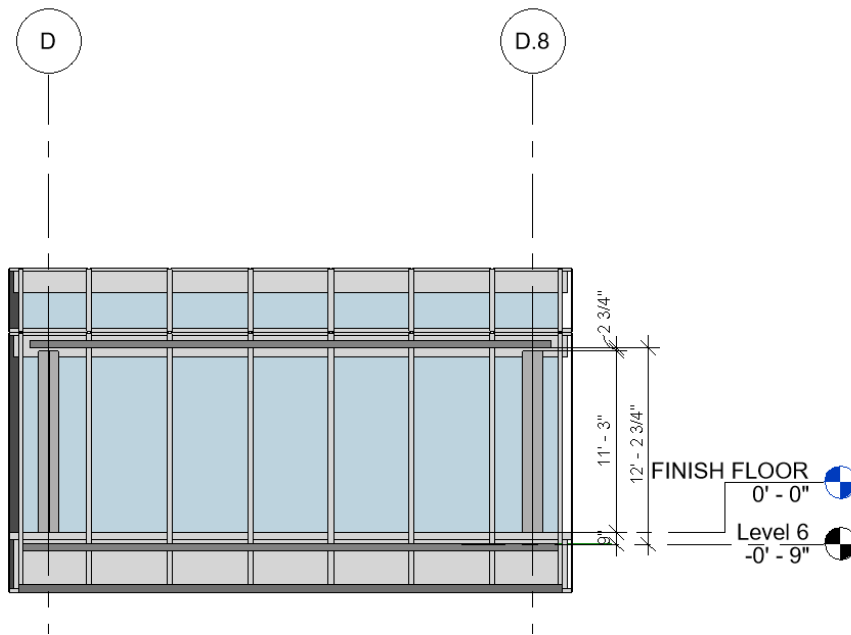
A: Any mechoshade and/or mechanical shade system the student wishes to provide is fine. Any color is acceptable.

Q: Specification: When using Steelcase models in the design spaces, are we allowed to modify any finishes or elements of individual models (like reform or upholstery)?

A: Yes.

Q: FL/CH: Cut the space into sections; the Finish Floor Level is 11" above the FL on the 6th floor. Does this 11" need to be excluded from the design scope? So, is it incorrect for Doors to begin with the 6th floor FL? Moreover, the column begins 9" above the 6th-floor level. So should this 9" be excluded from the design scope? There is 2 ¾" of space between the column's top and the underneath slab of the 7th floor. Is this part of the design scope? Could you please clarify the floor height, FL, and CH for the design area?

A: When we took the Revit file provided to us by the building owner, we took it back to the base building with no modifications. There was an added raised floor that is causing the issue and apparently there is some condition/treatment at the top that is showing the 2 ¾ space. Therefore, we have provided this elevation that shows the dimensions. Please use the 12'-2 ¾" dimension as your slab to slab dimension for the competition. Please see below:



Q: Programming Information: Based on the "Requirements for this space" on page 19, the total number of employees is 46 + 2 visitors. However, in the description on the right, it indicates that there are 42 people. Please clarify this part for me.

A: Our apologies on this error. The correct number of employees is 42 plus two guests for a total of 44. Please change your count to this number:

TEST / PROTOTYPE / DESIGN LAB

- Prototype Engineer (2) – reduced from 4 to 2
- Design/Development Engineer (2) – reduced from 4 to 2

Q: Is the wall blocking off the SE side of the elevators not meant to be there as it would create an obstacle to access the restrooms for those in the east corner?

A: You are free to disregard this and/or remove as you would like. Considering this is in the NIC area, I wouldn't focus too much on this area.

Q: The program states that there are 39 individual workstations 2 visitor workstations = 41 workstations. However, when you count the number of non-director employees (i.e., engineers, designers, managers, specialists, etc.) there are 42 positions + a receptionist. Does that mean that the teams will use hoteling stations for their staff instead of dedicated work stations? Please explain the discrepancy.

A: Our apologies on this error. The correct number of employees is 42 plus two guests for a total of 44. Please change your count to this number:

TEST / PROTOTYPE / DESIGN LAB

- Prototype Engineer (2) – reduced from 4 to 2
- Design/Development Engineer (2) – reduced from 4 to 2

Q: Can you please clarify/give more information about the Retail Mock-up space? Is this space primarily display? Any specific needs for the "experimentation" portion of this space?

A: This space is intended to be a space to mock-up different retail space concepts for where the NEXT appliances will be sold in a retail setting (ie: in a store, etc.). The experimentation is merely meaning more than one mock-up concept could be explored in this space at the same time.

Q: Can you please clarify/give more information about the Home Office space? Is this a display room only? Does it need to function as an actual office (i.e. does it need privacy, etc)?

A: This space is a mock-up of a home office space that should be designed as a real home office; however, it is intended to be used for experimentation of the NEXT products, to test prototypes of products for home office use. Though this should appear as an actual home office, it will not be used as an office for any of the NEXT employees. I suggest the students design their home office solution based on how they interpret/envision an effective home office solution. The amount of privacy can be left to their interpretation.

Q: The Revit model currently has a small glass/curtain wall located to the North West of the Elevators (Image attached; area highlighted in green). Is it safe to assume that this is not a permanent wall and can be altered/removed?

A: This was an error from the original developer of the Revit model and we didn't catch it. Please remove it.

Q: Do we need to consider egress width/length/accessibility to the stairs? Is it safe to assume that the NIC areas all meet code and we can design our spaces as wanted/needed without further consideration for egress and code?

A: Consider everything in the NIC area (including the stairs) meets all egress and code requirements.