

coalesse + nanimarquina

Nanimarquina Collection for Coalesse

Elemental patterns, natural color.

Our globally exclusive Nanimarquina Collection for Coalesse brings the warmth, texture and residential soul of hand-woven rugs to the new life of work. Abstract textured patterns are sourced from nature and found in the natural geometry of weaving techniques, creating modern yet subtly familiar designs with multiple style variations and color options for expanded choice. Traditionally crafted hand-tufted and hand-loomed dhurrie weaves are creatively adapted with materials that broaden applications, including outdoor use.

Reflecting our shared interest in the natural world, the rugs are offered in rich, elemental tones from both land and sea, all inspired by the Coalesse color point of view.



The nanimarquina story.

A second-generation family business established in 1987 in Barcelona, Spain, nanimarquina is internationally renowned for color, design and innovation in the world of handmade rugs. They make tradition contemporary.

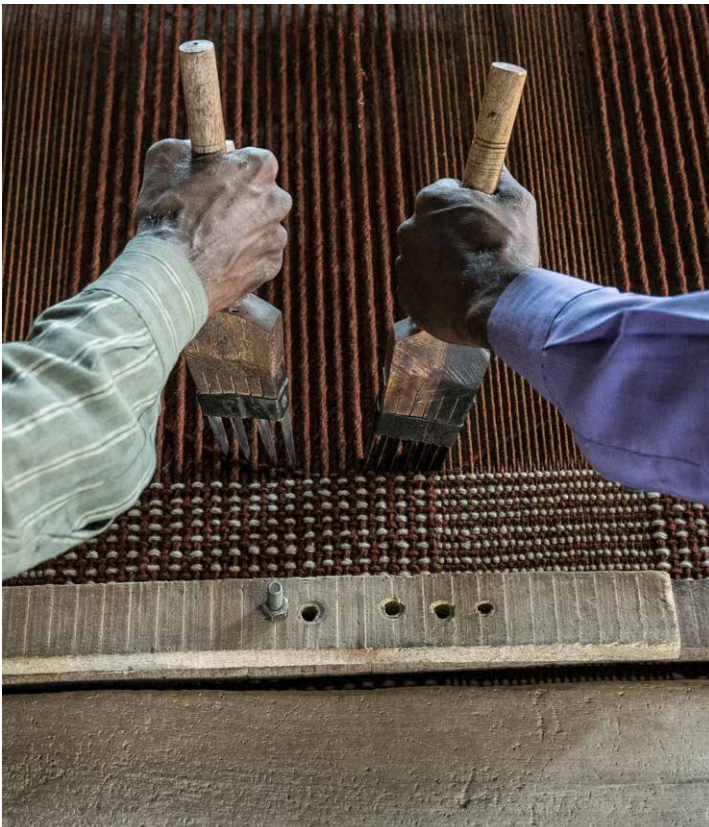


Cultural and craft heritage.

Handmade nanimarquina rugs blend traditional techniques and modern design — crafted with processes deeply rooted in the cultures and histories of the countries where they are made. The rugs in our collection feature both hand-tufted and hand-loomed dhurrie techniques.

Social impact.

Rugs in our collection are exclusively made in India. Together with Care & Fair, nanimarquina supports local artisans and their families through education and access to healthcare.



Nanimarquina Collection for Coalesse

Crafted tradition, modern nature.

Nanimarquina combines traditional weaving traditions and materials with modern design in rugs that bring new warmth and soul to the workplace. Exclusive indoor and outdoor rugs in a rich, natural palette drawn from the Coalesse point of view.

Designed in collaboration with nanimarquina and the Coalesse Design Group.

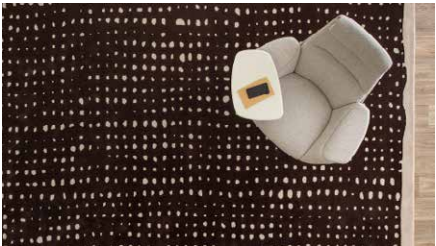
All rugs are available 6'x9', 8'x10' and 9'x13'.



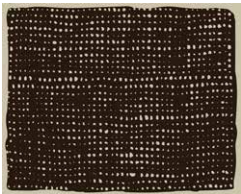
HAND-TUFTED RUGS

Basket

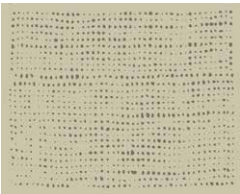
Open weave. Looking closely at light passing through a woven basket, a mesh pattern emerges with beautiful gaps and variations. Enlarged and slightly faded for a more abstract geometric field. Five design variations explore dark and light natural color combinations. Hand-tufted in 100% virgin wool.



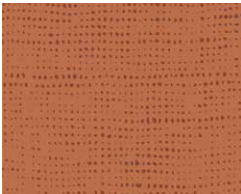
Pattern



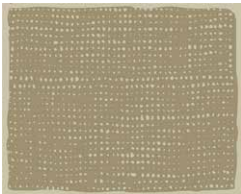
Basket 1



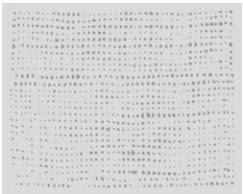
Basket 2



Basket 3

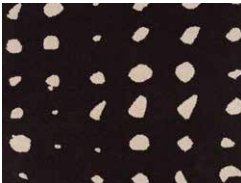


Basket 4



Basket 5

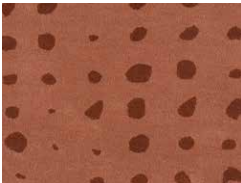
Materiality



Basket 1



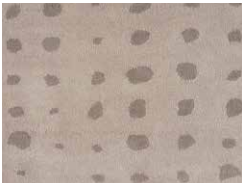
Basket 2



Basket 3



Basket 4



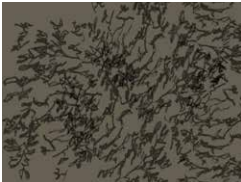
Basket 5

Shadows

Abstract leaves. Inspired by the shadows cast by plant foliage, an organic pattern emerges that moves irregularly across the field. The gentle vitality of light, branches, leaves, with an intricacy pleasing to the senses. Five color variations in warm combinations of earth tones. Hand-tufted in 100% virgin wool.



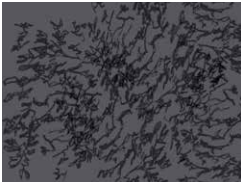
Pattern



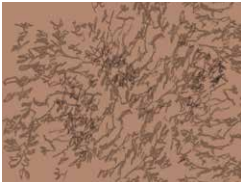
Shadows 1



Shadows 2



Shadows 3



Shadows 4



Shadows 5

Materiality



Shadows 1



Shadows 2



Shadows 3



Shadows 4



Shadows 5

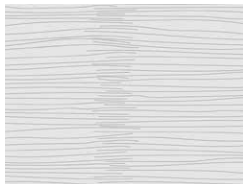
HAND-TUFTED RUGS *continued*

Strokes

Rhythm and line. Minimal, interlacing linework is adapted from a set of hand-drawn, sequenced marks over solid color fields. Varied patterns form a family of gestural rugs that can be combined for large areas. Five linear designs share coordinating tonal, neutral colorations. Hand-tufted in 100% virgin wool.



Pattern



Strokes 1



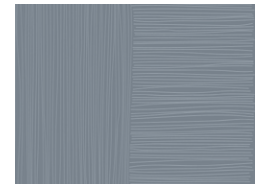
Strokes 2



Strokes 3



Strokes 4



Strokes 5

Materiality



Strokes 1



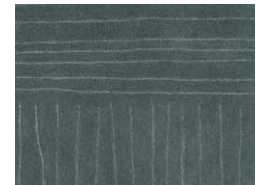
Strokes 2



Strokes 3



Strokes 4



Strokes 5

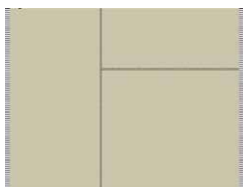
HAND-LOOMED DHURRIE RUGS

Patch

Panels and fringe. An update of the traditional dhurrie, made of patch-like panels that have been individually dyed, hand-loomed and sewn together by hand. The fringing is complete on some borders, and playfully placed on others for graphic impact. Five design variations combine different panels of stitching and color areas. Hand-loomed flat-weave dhurrie construction, crafted from 100% hand-spun New Zealand wool to give the rugs a distinctive variegated color.



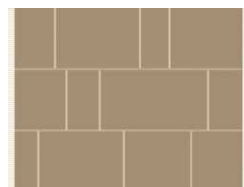
Pattern



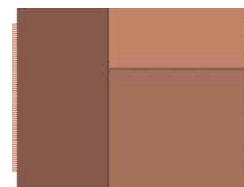
Patch 1



Patch 2



Patch 3



Patch 4



Patch 5

Materiality



Patch 1



Patch 2



Patch 3



Patch 4



Patch 5

HAND-LOOMED DHURRIE RUGS *continued*

Diagonal (*Outdoor*)

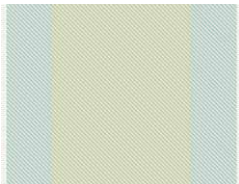
Graphic twill. A classic twill weave is enlarged into a diagonal textured pattern. Wide borders are colored in coordinating shades for bolder visual interest. Five color combinations in soft botanical and earth tones. Hand-loomed flat-weave dhurrie construction in 100% recycled PET. For outdoor use.



Pattern



Diagonal 1



Diagonal 2



Diagonal 3



Diagonal 4



Diagonal 5

Materiality



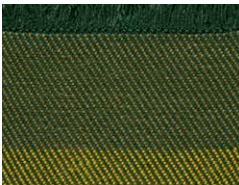
Diagonal 1



Diagonal 2



Diagonal 3



Diagonal 4



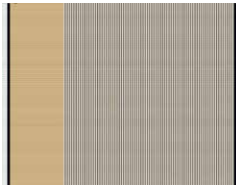
Diagonal 5

Mesh (*Outdoor*)

Warp and weft. Reminiscent of bamboo matting and other natural banded weaves, this design combines two different fiber weights to create varying textures across both warp and weft. Two patterns in five banded and color-blocked combinations, across a range of subtle colorways. Hand-loomed flat-weave dhurrie construction in 100% recycled PET. For this rug, two weights of PET fiber are used to create the unique dimension of the weaving. For outdoor use.



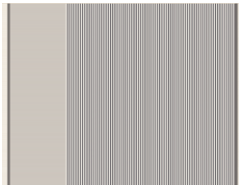
Pattern



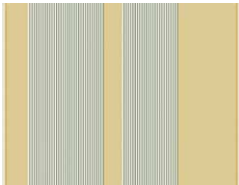
Mesh 1



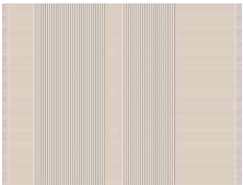
Mesh 2



Mesh 3

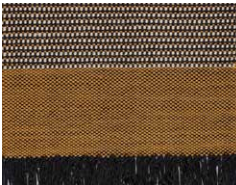


Mesh 4



Mesh 5

Materiality



Mesh 1



Mesh 2



Mesh 3



Mesh 4



Mesh 5

