

# Understanding and Specifying Max-Stacker III 477 Series Stackable Chair



**Product Details**

Max-Stacker III 477 Series	428
Dimensions	430



**Specifying**

Stackable Chair	432
Accessories	433

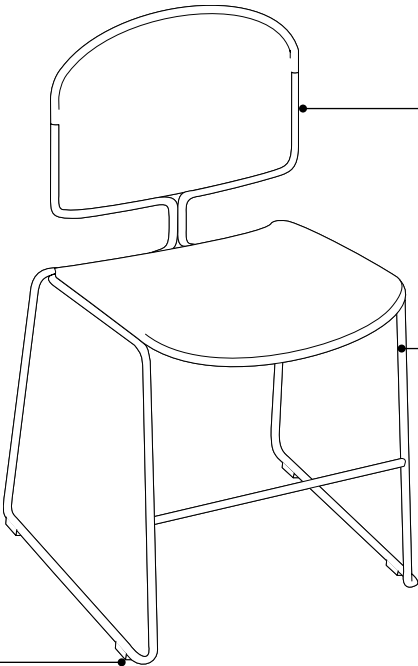
**Stackable Chairs**

**Stackable chairs** offer flexibility and ease of use in classrooms, auditoriums, or wherever extra seating is required.

- Max-Stacker III 477 Series
- Player 475 Series
- Leg-Base Chairs

# Max-Stacker III 477 Series

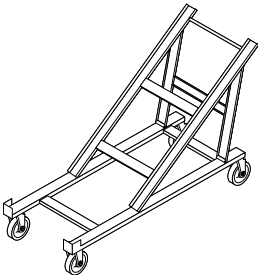
**Max-Stacker III** is a stacking chair perfect for high traffic areas. With a new texture and an updated finish offering, it fits into any environment.



**Plastic glides** are standard. Soft felt glides, optional, are recommended for use on non-carpeted floors.

## Product Details

**Max-Stacker III** can stack up to 12 chairs high when stacked on the floor.

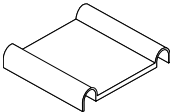


**Transport and storage dolly** is available to stack, move, and store up to 45 chairs.

**Unloaded transport dolly** measures 55"D x 22"W x 37½"H.

**Fully loaded transport dolly** measures 57"D x 22"W x 68½"H.

**Without transport dolly** stack can be up to 12 chairs high.



**Alignment device** is available to temporarily link chairs together in the field for evenly spaced rows. Chairs can be unlinked easily. Spacing between chairs linked with alignment device is 2¼".

**Surface Materials**

► See surface materials on page 634 for specific availability or refer to the *Surface Materials Reference Manual* for further information.

**Hard components (frame)**

- 4799 Platinum Metallic
- 7000 Black
- 7239 Midnight
- 9201 Polished Chrome

**Coatings**

- 1ATT Cast Shadow

**Lux Coatings**

- 4B20 Obsidian
- 4B22 Matte Brass
- 4B23 Burnished Bronze
- 4B24 Night Bronze
- 4B25 Matte Copper
- 4B26 Smoked Mica
- 4B29 Cast Iron

**Shell****Price Group 1****Plastics**

- 6009 Arctic White
- 6059 Sterling Dark Solid
- 6205 Black
- 6249 Platinum Solid
- 6259 Midnight
- 6332 Citron
- 6335 Wasabi
- 6336 Jazz
- 6337 Element
- 6338 Chili Red
- 6BE1 Ore

**Price Group 2****Signature Plastics**

- 6BD1 Aubergine
- 6BD5 Honey
- 6BD6 Lagoon
- 6BD7 Saffron

**Glides**

- Clear plastic
- Soft

**Programs & Services**

► See the *Surface Materials Reference Manual* for further detail about programs and services offered for seating.

**Dimensions**

► Page 430

**Resources****Printed Materials**

► Max-Stacker Brochure (11-0002245)

**Online Resources**

► Product Environmental Profiles, which provide key environmental attributes and product certifications can be found by searching for Steelcase at *Origin.build*.

# Dimensions

Max-Stacker III 477 Series

• Features	• Overall Depth	Width	Height	• Seat Depth	• Functional Seat Depth	• Seat Width	• Seat Height from Floor	• Back Width	• Back Height from Seat	• Back Lumbar Height
•	•			•	•	•	•	•	•	•
Max-Stacker III 477 Series										
	21½"	20"	30¼"	17¾"	16¾"	18¼"	17½"	18¼"	14¾"	9½"
•	•			•	•	•	•	•	•	•

Tip: Max Stacker III 477 Series stacked twelve high on the floor have the following overall dimensions: 29"D, 20"W, and 37"H.

• Width • Between • Arms	• Arm • to • Floor	• Arm • Height • from • Seat	• Seat • Pan • Angle	• Angle • Between • Seat and • Back
--------------------------------	--------------------------	---------------------------------------	----------------------------	--

N.A.	N.A.	N.A.	8°	93°
------	------	------	----	-----

Max-Stacker III 477 Series Stackable Chair



Standard Includes Required to Specify

- ▶ Need help?  
Product details,  
page 428

  - Frame: 7000 Black paint
  - Shell: plastic
  - Glides: plastic
- 1 Style number  
2 Seating coating color number for frame  
3 Plastic color number for shell  
4 Options, if selected (see below)  
▶ See *Surface Materials*, page 634.


Options U.S. Price Required to Specify

Surface Materials	Frame		
	• 7239 Midnight	No cost	Specify <i>with 7239 Midnight</i> .
	• 4799 Platinum Metallic	+\$46	Specify <i>with 4799 Platinum Metallic</i> .
	• 9201 Polished Chrome	+\$46	Specify <i>with 9201 Polished Chrome</i> .
	• 1ATT Cast Shadow	+\$82	Specify <i>with 1ATT Cast Shadow</i> .
	• Lux Coatings	+\$82	Specify Lux Coatings color number. ▶ See <i>Surface Materials</i> , page 634.
	Shell		
	• Plastic price group 1	No cost	Specify color number. ▶ See <i>Surface Materials</i> , page 634.
	• Plastic price group 2	+\$41	Specify color number. ▶ See <i>Surface Materials</i> , page 634.
Glides	• Soft glides for use on non-carpeted floors	+\$ 7	Specify <i>with soft glides</i> .

Specification Information

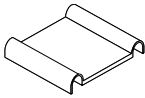
• Style Number	• U.S. Base Price
•	•
•	•
•	•
477100	\$304
•	•
•	•

▶ Detailed dimensions,  
page 430

  
**For Canadian Pricing**  
Multiply U.S. Price by the  
Canadian price factor.  
▶ See page 1 for details.

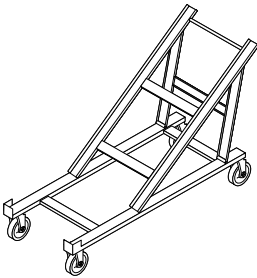
# Max-Stacker III 477 Series Accessories

## Alignment Device



Standard Includes		Required to Specify
• Carton of 12 alignment devices: black plastic only		Style number
Specification Information		
• Style • Number	• U.S. • Price	
•	•	
472G	\$52	
•	•	

## Transport and Storage Dolly



Standard Includes		Required to Specify
• Transport and storage dolly: black paint only		Style number
Specification Information		
• Style • Number	• U.S. • Price	
•	•	
473D	\$778	
•	•	



**For Canadian Pricing**  
Multiply U.S. Price by the  
Canadian price factor.  
► See page 1 for details.

