

# Elevating Design

---



Please Mute your audio



Open chat box for questions/  
comments



This session will be recorded  
and posted

# Agenda

SmartTools Release Update

SmartTools for Revit

New Training Videos

CET Schemes and Tagging

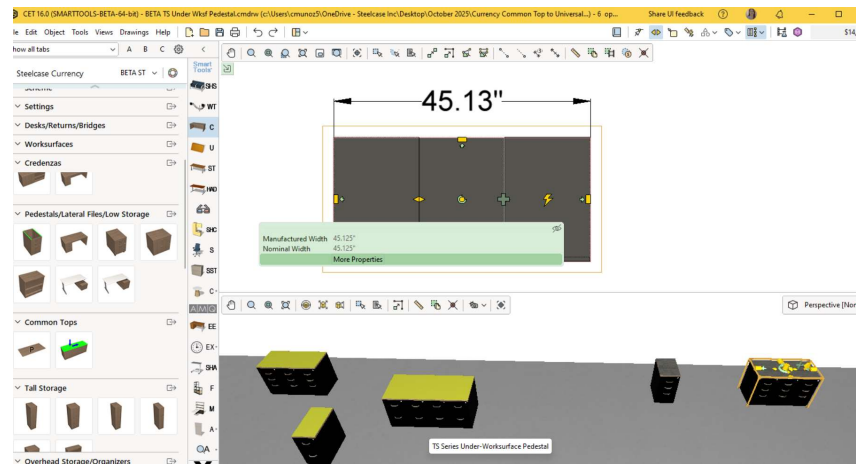
# SmartTools October Release

---

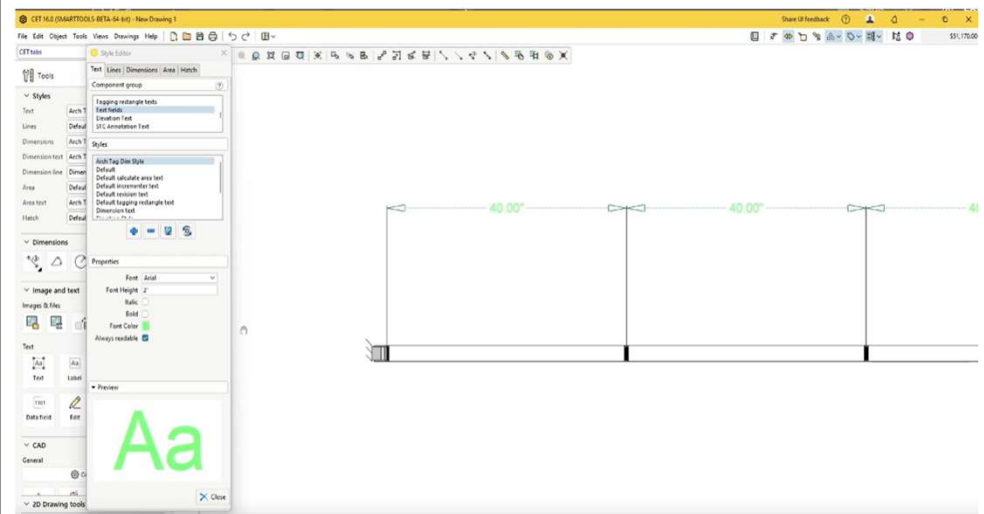
# Product Updates

Steelcase

SmartTools

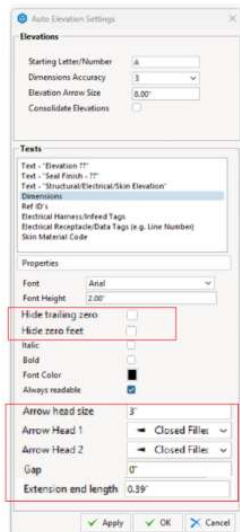


- Currency Common Top attaches to TS Storage



- Privacy Wall: Update panel tags to be included in Style Editor

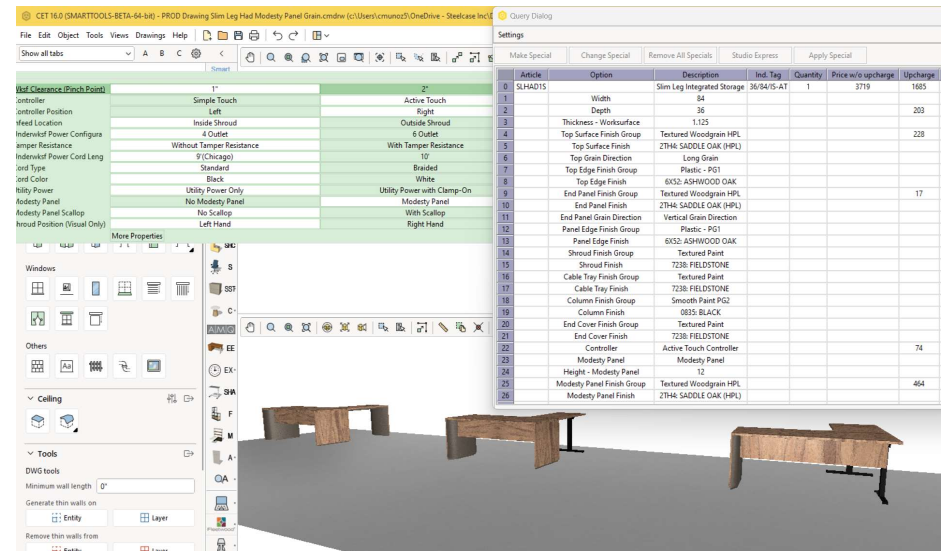
# Product Updates



- Auto Elevation Settings: Add user control of dimensions & dimension lines

Steelcase

SmartTools

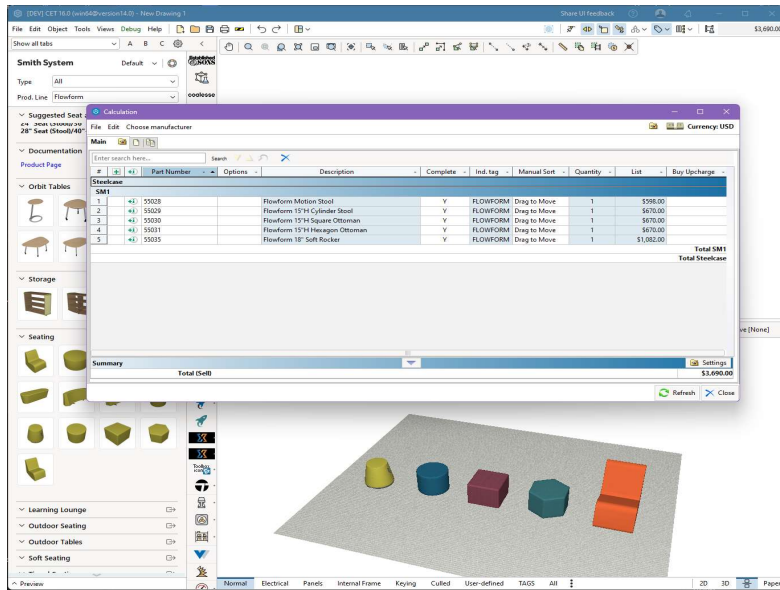


- Slim Leg Had removed vertical grain option from 2 and 3 shroud corner worksurfaces

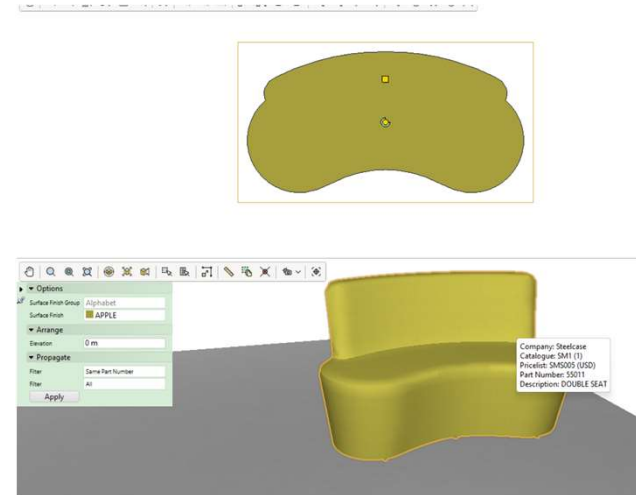
# Product Updates

Steelcase

SmartTools



Added stools and ottomans to Flowform Seating



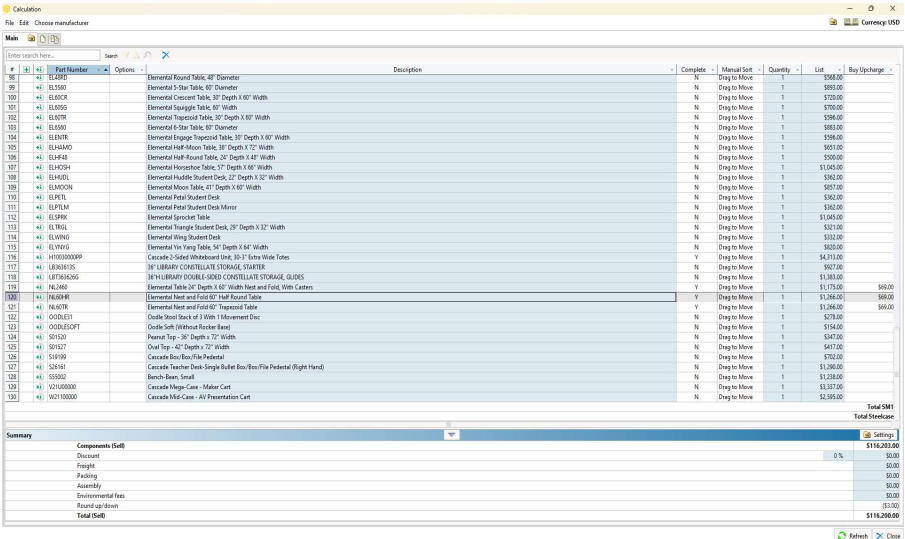
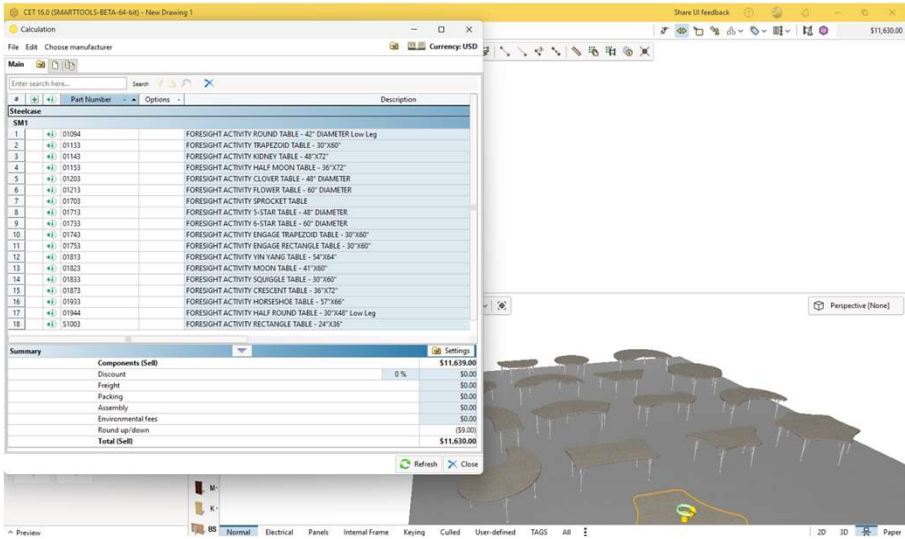
Added a Learn Lounge Double Seat to Flowform

# Product Updates

- Changed Foresight style numbers – the prefix was removed to provide consistency with other Smith products

Steelcase

SmartTools



## Smith System: Price Adjustment

# Material Updates

---

## Steelcase

### SmartTools

## Steelcase

- Removed Fresco G006 from all product lines
- Everwall Solid Skins-Fabric: remove Latch, Stencil & Intersection

## Smith System

- Added finishes Stream, Terra and Willow to Flowform Soft Seating
- Added Maple finish to Tables and Desks



# Product Culling

## Steelcase

---

### SmartTools

## Steelcase

- Misc culling for Surface Materials. See Culling List  
<https://www.steelcase.com/resources/documents/2024-april-culling-visual-guide/>
- Removed Ergo Edge Antimicrobial option on SOTO Ergo Edge, SOTO Desk pad and Universal Straight worksurfaces with soft edge

## AMQ

- Culling all Amobi styles
- Culling Thread Power

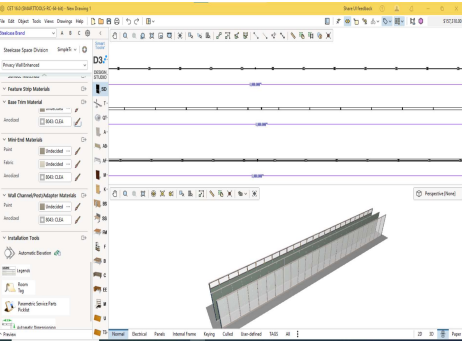
## Orangebox

- Culling OB1AIR29

## Smith System

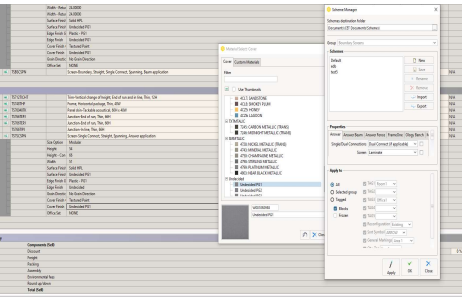
- Culling Flavors styles 11830 and 11831

# Resolved Issue Highlights



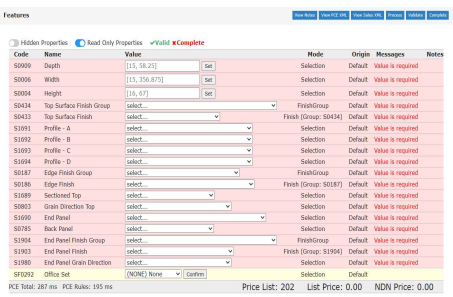
**Description**  
Bug 1191529: Sentry Support - Privacy Wall Part Hook Crash

**Resolution**  
Got to space division tab  
Change to Privacy Wall dropdown  
Draw wall with length of 1000"  
CET will crash



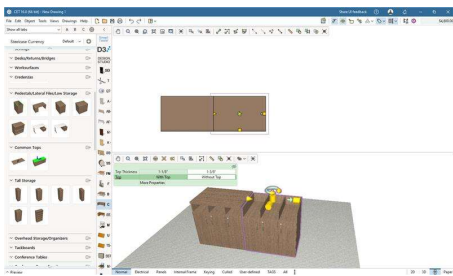
**Description**  
Boundary Screens- Old Schemes window is displayed when finishes via BOM

**Resolution**  
Trying to change finishes or options via BOM, it opens the old schemes windows for the Boundary Screens, ( Answer, Beam, Fence, Ology.)



**Description**  
File Surrounds - No option to specify Office Set in Universal/EE File Surrounds

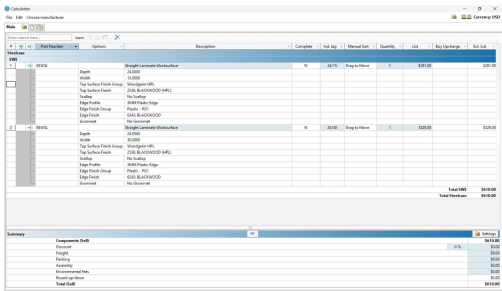
**Resolution**  
"Office Set" option is found in Catalogue Services page for part number RAFSL. It is also seen in the query in CET. However, it can't be specified.



**Description**  
Currency - Buffet Credenza has "Without Top" option on quick properties

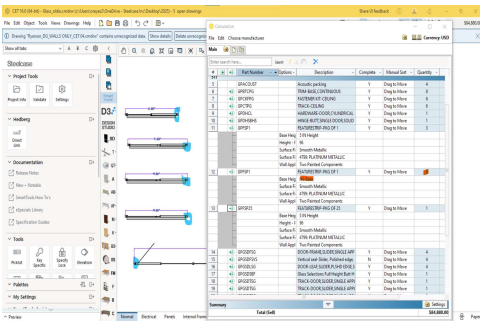
**Resolution**  
When placing the Buffet Credenza, you get the option to choose between "With Top" or "Without Top" on the quick properties.

# Resolved Issue Highlights



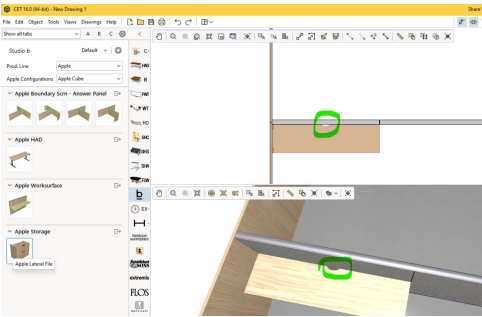
**Description**  
EE - Worsurface shows as incomplete in BOM and is missing Grain Direction

**Resolution**  
EE Straight Laminate Worksurface shows as incomplete in the BOM. It is also missing the grain direction, even though it has been fully specified.



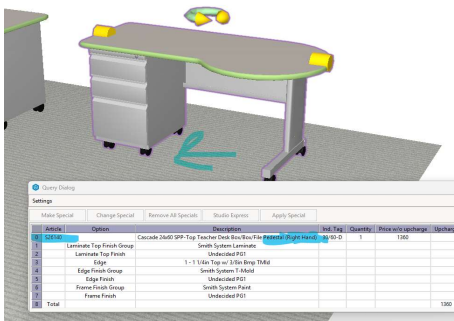
**Description**  
PW Enhanced - Wrong calculation for "no base" Feature Strips, also scrap factor is not working on these kind of FS.

**Resolution**  
There is an error at FS calculation when they have a "no base" application, on a drawing example there are 5 configuration that should generate 10 "no base" feature strips, currently we are generating only 9, also the scrap factor is not working on this kind of FS, no matter the % you have it doesn't modify the "no base" FS quantity.



**Description**  
The Universal Worksurface Says No Scallop But The Graphic Shows A Scallop.

**Resolution**  
Says No Scallop But The Graphic Shows A Scallop.



**Description**  
Smith System - Cascade Teacher P-Top Single Cabinet Desks have incorrect style numbers assigned to them

**Resolution**  
Cascade Teacher P-Top Single Cabinet Desks have incorrect style numbers assigned to them. Cascade Teacher P-Top Single Cabinet Desk (Left hand) has the style number 26141. Cascade Teacher P-Top Single Cabinet Desk (Right hand) has the style number S26140.

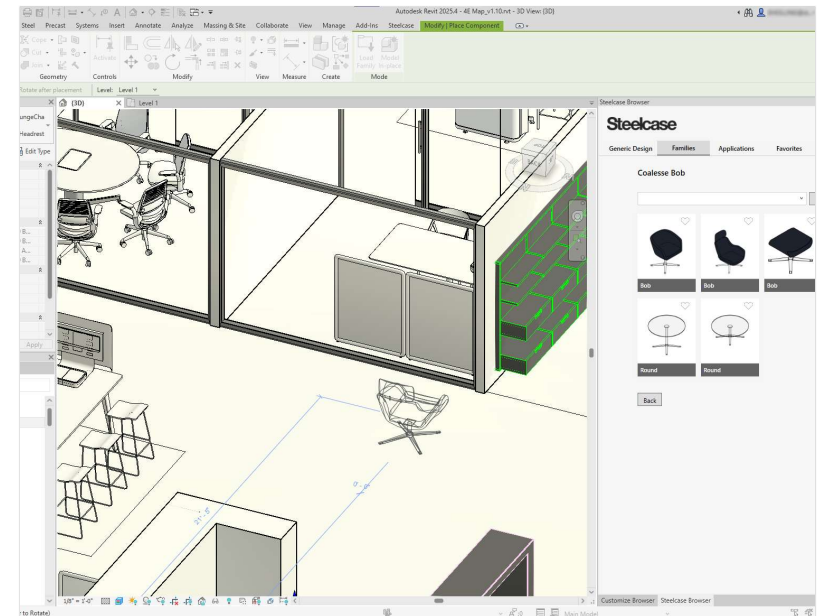
# Steelcase SmartTools for Revit

---

# Steelcase SmartTools for Revit

What is it?

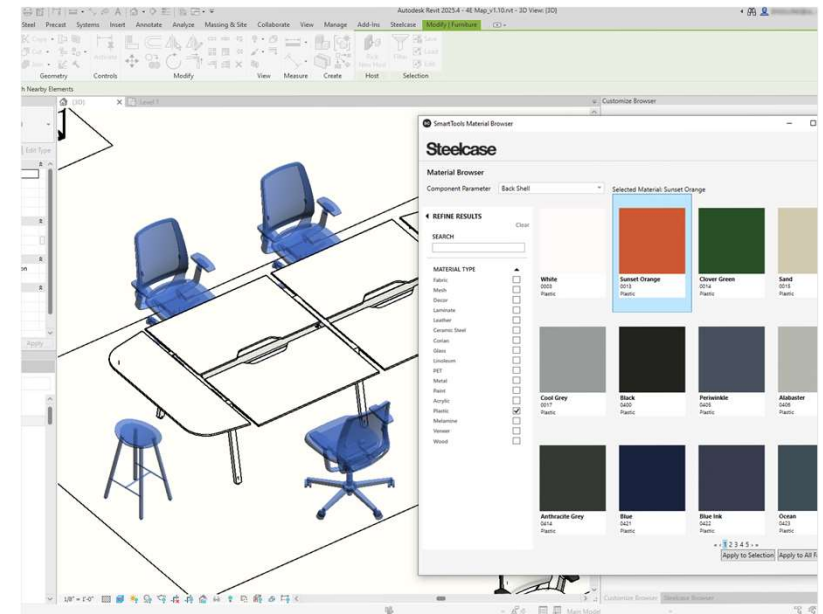
- 1) Steelcase built plugin for Revit 2026, 2025, 2024, 2023
- 2) Allows easy access to majority of Steelcase product lines natively in Revit
  - No support for Architectural Walls
- 3) Developed with input from top firms in North America
- 4) Three main functions
  - Generic Furniture Symbols
  - Steelcase Families + Applications – always up to date
  - Advanced Finish Application tool



# Steelcase SmartTools for Revit


What it is **NOT**

- 1) A replacement for CET
- 2) A specification tool – No Power, Limited Options, etc.






# Available Now



## Steelcase SmartTools for Autodesk® Revit®

Steelcase

☆☆☆☆☆ 0 review



OS: Win64

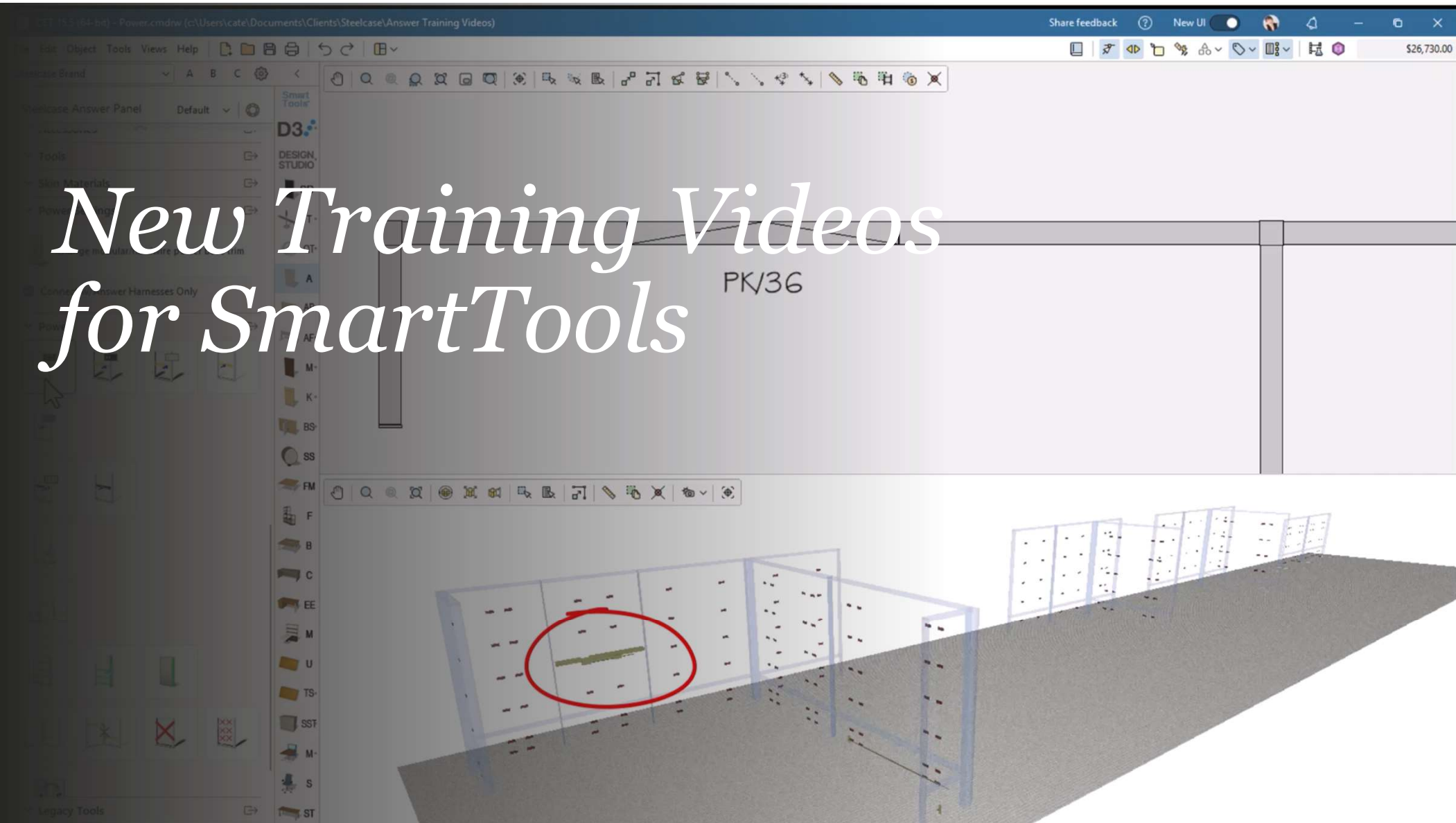
Language: English

### Description

- The plugin includes a library from Steelcase and its community of brands, including Coalesse, Viccarbe, West Elm Work, HALCON, Orangebox, Smith System, AMQ, and more.
- Once installed, the lightweight, searchable and filterable library appears within Autodesk® Revit® without slowing down your model or adding unnecessary information that increases model size.
- Planning ideas available on Steelcase.com are accessible in the plugin and can be placed into your model with one click.
- With access to a vast material library, the plugin allows you to customize finish materials across multiple families simultaneously.

Features and Benefits:

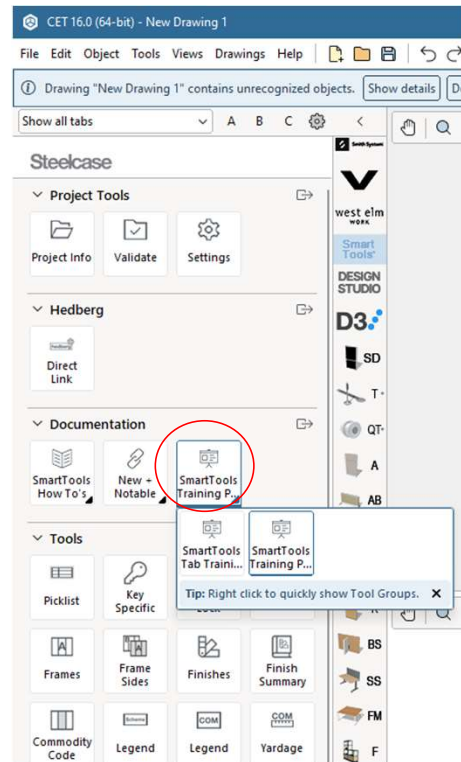
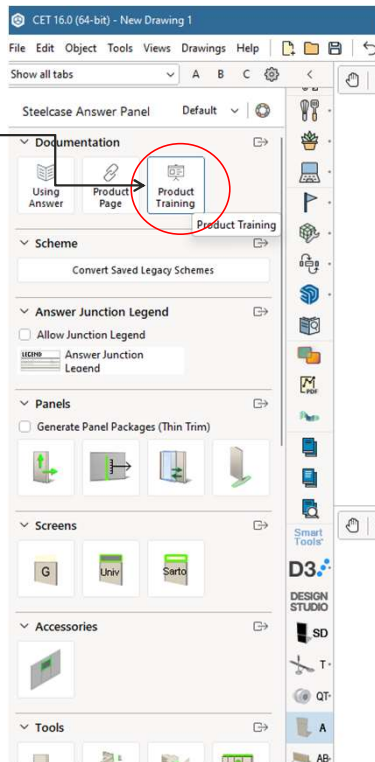
# *New Training Videos for SmartTools*



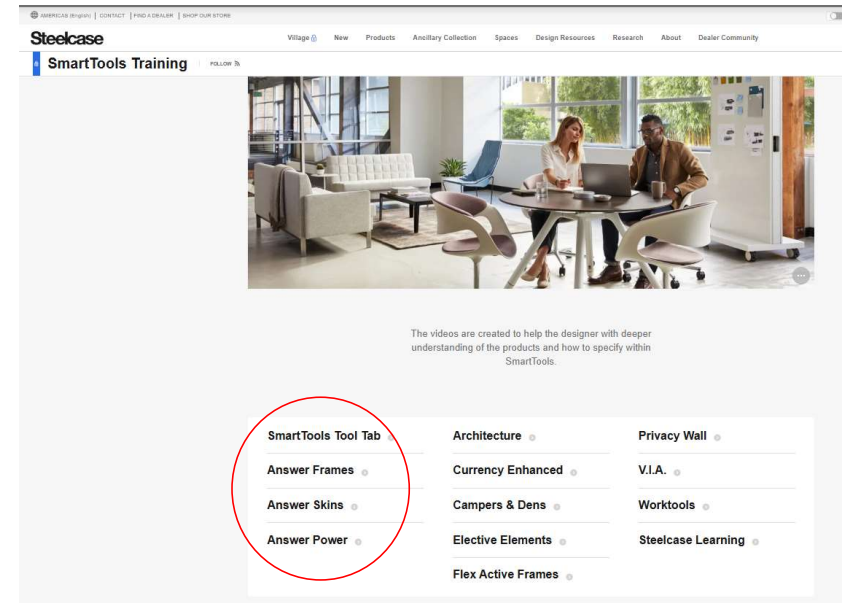


# How to Access

Designers can access the videos directly in SmartTools under the Answer product tab



Videos can also be accessed on the SmartTools Training Videos page on Village



<https://www.steelcase.com/village/pages/sales-design/smarttools-clips/>

# How to Access

SmartTools Training Videos- Answer  [Edit](#)

Select All 1 - 3 of 3



♥ [25-0261744](#)



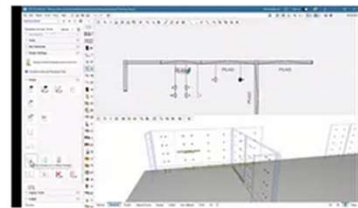
SmartTools Training Videos- Answer Panel  
Skins

**MPEG4** (0:17:44)

**Asset in Global Collection:** Yes

 Watch

 Edit



♥ [25-0261743](#)



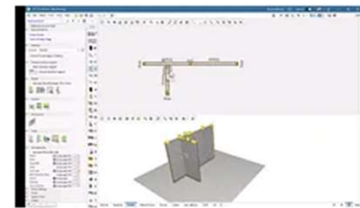
SmartTools Training Video- Answer Panel  
Power

**MPEG4** (0:09:44)

**Asset in Global Collection:** Yes

 Watch

 Edit




♥ [25-0261742](#)



SmartTools Training Video- Answer Panel  
Frames

**MPEG4** (0:19:33)

**Asset in Global Collection:** Yes

 Watch

 Edit

# More to Come

We are currently working on more training videos for Dealer Designers in SmartTools



Universal Worksurfaces



Storage- Universal, TS,  
WorkValet, File Surrounds



HADs



Currency & EE

# Schemes and Tagging

---

Cate Sword

# Series Calendar 2025

## 8 JANUARY– BUILD

Community Based Design, Wood Resources

## 9 APRIL– BUILD

SWAT Power Training with Stephanie

## 9 JULY– BUILD

Ancillary Spec Training, Inclusive Design Guide, AI Design Tools

## 15 OCTOBER– BUILD

Surface Materials, Concept Review Template, Privacy Guide

## 23 JANUARY

SmartTools Update, Ocular Towers, Photo Lab Post-Processing tips.

## 20 MARCH

Designtex Update, SmartTools Culling Enhancements, Picklists- Parametric Products

## 22 MAY

Ancillary Application Sample Program, Power Training- Worksurface and Table Power

## 24 JULY

ADA/ Knee and Toe Clearance Guide, App Studio Updates, Paper Space

## 18 SEPTEMBER

Express Ship, D3 tools- App Studio, PaperSpace

## 20 NOVEMBER

CET Blocks Tips and Tricks

## 20 FEBRUARY

Seating Resources, SmartTools Tab Part 2

## 24 APRIL

SmartTools Update, Phase 2 Product Suggestions, Showroom Offer, Power Training- Answer Products

## 19 JUNE

SmartTools Update, Jean Nouvel, Categories 101

## 21 AUGUST

SmartTools Update, Designtex Update, Calculations Tips and Tricks

## 23 OCTOBER

SmartTools Update, SmartTools for Revit, Schemes and Tagging

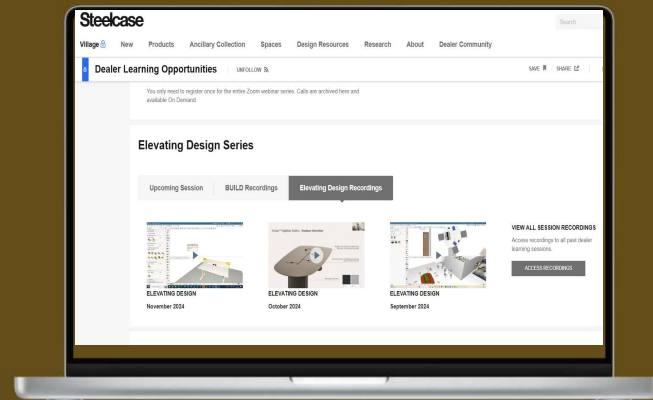
## 18 DECEMBER

TBD

Next Call

November 20  
2-3 EST

Series Recording



[Link to Recording](#)

Topic

CET Blocks Tips  
and Tricks

**Steelcase®**