

# Coalesse Retail



*Packaging. Many products ship via FedEx® when ordered in quantities of 4 or less. Products that ship via FedEx in limited quantities are indicated on the product page with the box symbol at the left. Please contact your Customer Service Representative for details.*

## General Information

Ordering and Warranty	2
Sustainability	4
Designers	5

Coalesse Seating and Occasional Tables	7
--	---

Surface Materials	15
-------------------	----

► For a list of all trademarks, refer to the last page of this specification guide.

# Ordering and Warranty

## HOW TO ORDER

Coalesse furniture is available through authorized retailers. Select products are available for order from our web site. The authorized dealer can help you with everything from surface material selection and order placement, to specialized services, such as space planning and design, delivery and installation. Best of all, they are part of your local community, providing expert advice with a thorough understanding of local needs. For more information and a listing of dealers and retailers, visit [www.coalesse.com](http://www.coalesse.com) or call 1.800.627.6770.

Coalesse reserves the right to limit distribution of any or all models.

## CREDIT, PRICES, AND TERMS

Credit may be established upon acceptance of satisfactory references. For payment terms, contact Coalesse's Credit Department. Coalesse may cancel or change credit terms at its discretion and may request advance payment at any time.

The order confirmation will be deemed by the customer and by Coalesse, as the final expression of agreement and will be deemed the exclusive statement of terms. The order confirmation supersedes all prior writings and may not be modified or rescinded, except by a revised Coalesse order confirmation signed by the customer. No changes are binding on Coalesse until delivery of the order confirmation.

Any storage charges and applicable sales taxes are in addition to the prices shown for merchandise. Inside delivery, uncartoning and installation are customer's responsibility unless separately quoted. All list pricing shown includes freight prepaid to one destination for delivery in the 48 contiguous United States. Hawaii and Alaska are not included. We reserve the right to increase prices without notice due to increases in labor and material costs. If timely payment is not made, customer is liable for reasonable collection costs, including attorney's fees.

## SHIPPING

Published pricing includes shipment via standard carrier on Steelcase truck within continental US 48 states to a business location only. In the event that Retail Partner requires drop ship delivery to a small location that is inappropriate for delivery via standard carrier or Steelcase truck, such as a consumer or small business, shipment via FedEx Ground is available for an upcharge on a per Product basis. Rates for FedEx Ground delivery can be quoted by Coalesse's Retail Customer Service Representative. Such shipping charges will be included in the invoice. Retail Partner will determine if FedEx Ground is required, as opposed to delivery via common carrier or Steelcase truck. Any fees incurred by Coalesse to deliver Products to a location that was incorrectly specified as needing FedEx Ground will be charged to Retail Partner.

## CLAIMS

Merchandise shipped from Coalesse is thoroughly inspected and properly packed before leaving the factory. Responsibility of its safe delivery is assumed by the carrier at the time of shipment. Customer must match the freight delivered with the bill of lading. Customer must examine packaging material upon delivery and note any damage on the carrier bill of lading. If there is damage to the packaging material, inspect the furniture immediately. If concealed damage is found, contact the carrier within 10 days of delivery date. Save all packaging materials until after inspection.

Freight damage and claims must be reported by the purchaser to the carrier. Coalesse is not responsible for freight claims. Claims for loss or damage must not be deducted from our invoice, nor payment withheld awaiting adjustment of such claims. Do not return any merchandise to Coalesse without a Return Authorization number. By following these procedures carefully, Coalesse guarantees our full support of your claims to protect you against loss or damages. All claims against Coalesse for errors or shortages must be made by customer in writing within fifteen (15) days after delivery. Failure to make claims within fifteen (15) days constitutes acceptance of merchandise and waives claims. Cutting of textiles deems acceptance of yardage and waives all defects, errors, and shortages. Coalesse is not liable for subsequent damages.

## SPECIAL / CUSTOM PRODUCTS

Coalesse prides itself on being responsive to our customer's needs. Contact our customer service team at 1.866.279.6216 to discuss a special opportunity. Due to product modifications and engineering time, special orders may not be cancelled. Charges will apply.

## FOR MORE INFORMATION (on ordering our products)

Please contact Coalesse Customer Service at: 1.866.279.6216 .

## ORDER CANCELLATIONS/CHANGES:

All order change/cancellation requests must be submitted using the Coalesse order change/cancellation request form. Late changes could jeopardize the committed delivery of an order.

Coalesse products:

- No charges will be assessed for change or cancellation 14 or more calendar days prior to the manufacturing completion date (excludes holidays and/or large quantity project size orders). For import products, charges may apply.
- No manufacturing changes are allowed 0-13 calendar days prior to the manufacturing completion date. Simple changes including shipping address changes are subject to approval but will be accommodated when possible.
- No cancellations or product changes will be accepted for quick ship or special/custom product orders including special laminates. A cancellation fee will be applicable for any custom product and/or change may jeopardize lead time.
- If COM/COL has been received at time of change or cancellation, it is the dealer's responsibility to advise disposition or return of materials. Coalesse will not store materials after 30 days.

## ADDITIONAL CHARGES:

- Changes or cancellations that involve any of the following may be subject to a charge earlier and/or greater than shown above: Special engineering product, CSM, pre-ordered components, materials with extended lead times (e.g., veneers, special paint, etc.) or large quantities of standard materials.
- Use our Order Change/Cancellation Request Form for all order changes. It is Coalesse responsibility to accurately process change order requests. It is the dealer's responsibility to verify that we have accurately interpreted your change requests by checking the acknowledgement after the change has been made. If you do not use the web-based change order form process and an error occurs during our translation which cannot be corrected prior to ship, all costs will be shared on a 50/50 basis. Changing ship dates or adding product to your order is subject to the availability of manufacturing capacity.
- Cartoning changes and shipping address changes are subject to approval and to a change charge. Please consult your Customer Service for specific information pertaining to your order.

## RESERVED FABRIC POLICY

Prior to order receipt, reserving textiles (COM/COL, Maharam, and DesignTex Select Surfaces) is the responsibility of the retailer. Coalesse cannot reserve textiles based on projected orders. Coalesse cannot guarantee Maharam or DesignTex fabric availability. If retailer reserves Maharam or DesignTex textiles, Coalesse will require the reserve number and zip code for locating purposes when ordering.

# Ordering and Warranty

## SCHEDULE ENHANCEMENTS

Coalesse will entertain schedule enhancements on a case-by-case basis; however, please understand that we must receive complete information such as installation date, opening date etc...to make informed scheduling decisions.

No order move-ups or move-outs are allowed on any order that falls within the 15-working day period of its manufacturing completion date. If it is within the 15-working day period, Coalesse will invoice at shipment but may offer storage options at a charge for manufactured product.

## Surface Materials

### ELMOTIQUE, ELMOSOFT, ELMORUSTICAL LEATHER CARE

Only the finest hides are used for Elmo leather. Expect some color variations from hide to hide due to the aniline state of the product. Color fading may occur if leather is exposed to direct or intense light. Care is required to allow this product to achieve the rich natural patina that beautiful natural leather develops. The hallmarks of this leather include some naturally occurring markings, such as healed scars, insect bites, stretch marks, and fat wrinkles. Dorado's leather treatment is very natural with little protection from spills or body oils. This rich leather will exhibit stains and oils through normal use. Coalesse is not responsible for discoloration, spotting, or staining on this leather.

## SPECIAL COLOR MATCH LEATHER

Coalesse can provide a special color match in its leather to any supplier's leather color, paint color, carpet color, wallpaper color, etc. Sample to match must be submitted to Coalesse with purchase order. Sample for approval can be supplied if requested.

Note: – Minimum order 2,500 sq. ft.

## UPHOLSTERY

All Coalesse textiles are priced by groups. Some Coalesse fabrics can be treated for flame retardancy, contact Customer Service. All Coalesse products are handcrafted making each unique. Certain fabrics and leathers will appear loose and may differ from like products due to comfort wrinkles when upholstered.

A contrasting welt is available on some products. Consult Customer Service for yardage or square feet requirements and prices. All stripes will be applied vertically unless customer specifies otherwise. Loose cushions on Coalesse products are not fully upholstered (not reversible).

Designtex and Maharam fabrics are graded in our pricing. Simply order Coalesse products with Designtex and Maharam specified. Designtex and Maharam fabrics are graded in on Coalesse products; however, Coalesse does not stock fabrics and can only respond based on Designtex and Maharam lead times. For current groups, refer to Coalesse website: [www.coalesse.com](http://www.coalesse.com).

## Pre-approved CAL 133 Textiles

Designtex and Maharam textiles have been graded into our pricing; however, not all textiles are recommended on all seating. For current group and approval information, please visit our website and click on FABRIC EVALUATIONS to obtain group pricing for a specific pattern.

## WOOD AND FINISH SPECIFICATIONS

Solid hardwood is a renewable natural resource, and each section of a tree is unique. The color and grain pattern will vary emphasizing the natural beauty of each product built. Wood is a natural material and will accept stain differently. Coalesse cannot guarantee finished products to be an exact match to finish samples due to the natural characteristics of wood. Light finishes will exhibit some mineral streaks and dark graining due to the natural wood.

The finish used by Coalesse on hardwood frames and occasional tables is pre-catalyzed lacquer which can be easily repaired in the field if damage occurs. Veneer is sanded prior to finish application, and sanded between coats. The lacquer top coat is then polished after final application with wool wax. 4 to 6 layers of finish are applied during the process. The CH process varies from our internal processes.

## Coalesse Tables and Caseloads

Coalesse's primary wood finish, Clarity, is a water-borne UV topcoat, which protects the environment while providing exceptional durability and resistance to water and chemical stains. contoured products, such as wood side chairs & occasional tables, are finished with post-catalyzed vinyl, which provides similar properties and matches the sheen and color of Clarity. due to natural variations in wood, finished products may vary from samples in color, texture, and grain.

## STAIN-TO-MATCH PROGRAM

Coalesse will offer a stain to match program at no additional upcharge for all products with wood finish options.

Customer must supply Coalesse Customer Service with sample to be matched. (internal note - CSR's will have samples of bare wood to compare and define species when applicable that will be used to accomplish the closest stain to match).

Standard Coalesse sheen will be standard unless specified by customer.

Sheen to match is available as part of the stain/sheen to match program at no upcharge.

Species to match is considered a special and requires to special request to Coalesse Customer Service. Species to match may require an upcharge.

## Rapid10

The Coalesse Rapid10 program provides a broad selection of our most popular seating, outdoor furniture, and tables with expedited manufacturing. To view and specify products that are included in the Coalesse Rapid10 program, please refer to the *Quick Ship Guide*. The comprehensive Coalesse offering in this program can easily provide a range of solutions for any setting. Coalesse Rapid10 is designed for clients whose needs require fast delivery of products. All products are made-to-order and ship in 10 business days and typically deliver within 15 business days.

## Warranty

For warranty information, please go to <http://www.coalesse.com/warranty/>.

# Sustainability

As our understanding of sustainability evolves in the contract furniture business, Coalesse is being launched on three important fronts: responsibly harvested woods, better ways of plating metal, and manufacturing for the highest level of durability. To ensure all new products are socially responsible, we have engaged the "cradle-to-cradle" design consultancy, MBDC, to advise us and provide third-party analysis of the materials and processes we use to create our products. As Coalesse grows, social responsibility will be an essential part of our decision-making, from design to disposal. We believe that our success on the environmental front will be built on the accumulation of a multitude of small steps and the occasional big leap. We are starting with a green outlook and we have every intention of growing greener.

## WOODS: FSC CERTIFICATION

Our policy with wood sourced from outside North America and our approved European partners is that they must be certified by The Forestry Stewardship Council (FSC) to ensure these woods have been responsibly harvested from sustainable forests, and that the rights and welfare of workers and local communities are being respected. Through an FSC label, wood can be traced back to its original source of supply.

Our Grand Prairie, TX and Geneva, NY manufacturing locations have chain of custody certification for working with FSC certified woods.

## TRIVALENT CHROME: A NEW ALTERNATIVE

Chromed steel is a mainstay of the contract furniture industry because it is considered a premium finish with high durability. But depending on the type of chrome processing used, it can have a detrimental impact on human and environmental health. The most common method of chrome plating uses hexavalent chrome, a known carcinogen and considered by MBDC in their color-coded rating system (green, yellow, red), to be a "hard-red" chemical. There are no health hazards associated with chrome once it has been applied, but the hexavalent chrome electroplating process can be hazardous.

Is there an alternative? Coalesse is opting for a safer method of plating and has partnered with a domestic supplier who uses only "trivalent" chrome, a non-carcinogenic form of the metal. Few, if any, metal finishing processes are without environmental challenges, and chrome is no exception. Working with the best technology currently available, we will continue to seek new and better alternatives.

## BUILDING TO LAST

Building longevity into products is an important sustainability strategy. A chair or table that lasts for 50 or 100 years or more will not have to be replaced, saving the materials and finishes and embodied energy from being duplicated in another form. Coalesse is quality furniture designed to outlast its buyers. Our hope is that every piece in our collection appreciates in value over the years, so it will be passed on.

## ONGOING AUDITS

As the Coalesse collection grows, our intention is to live by the cradle-to-cradle (C2C) philosophy described by MBDC this way: "Instead of designing cradle-to-grave products, dumped in landfills at the end of their 'life,' the goal is create products for cradle-to-cradle cycles, whose materials are perpetually circulated in closed loops. Maintaining materials in closed loops maximizes material value without damaging ecosystems." Coalesse has contracted MBDC to audit the materials used in the majority of our existing products, and to advise us as we develop new products. We intend to achieve Cradle to Cradle certification on the highest percentage of products possible. As Coalesse grows, social responsibility will be an essential part of our decision-making, from design to disposal. We believe that our success on the environmental front will be built on the accumulation of a multitude of small steps and the occasional big leap. We are starting with a green outlook and we have every intention of growing greener.

# Designers

## Brian Kane—USA

### Bindu

Brian Kane graduated from the University of Bridgeport, Connecticut, in 1970 with a Bachelor of Science degree in Industrial Design. He worked for several New York City design studios and spent a year in Milan, Italy, working for Architect Silvio Coppola. His projects included the design of seating and casegoods for such companies as Mobil Italia Spa. and Bernini Spa.

After returning to the U.S., he worked in New York for Atelier International (A.I.). Work involved special contract furniture design projects, showroom design, and the startup of U.S. production of Italian designs by Cassina, B&B, and Tecno.

Kane joined the design staff at Metropolitan Furniture Corporation (Coalesse) in January, 1977. Less than three years later, he became one of four partners assuming ownership of the firm, and took on the responsibilities of Vice President of Design and Product Development.

In 1987, Metropolitan was acquired by Steelcase. For the next two years, Kane maintained his position as Vice President and was responsible for all aspects of Coalesse's design, including products, showrooms, and graphics.

In March of 1989, Kane established Kane Design Studio in San Francisco.

Kane's designs have won over 80 design awards and have been exhibited at the Whitney and Brooklyn Museums in New York and the Museum of Modern Art in San Francisco.

## Patricia Urquiola—Spain

### Hosu and Last Minute

Patricia Urquiola began training as a student in architecture at Facultad de Arquitectura de Madrid before graduating in design from Politecnico di Milano in 1989, where she studied under Achille Castiglione.

In 1991, as head of the product development team at De Padova, Urquiola designed her first commercial furniture pieces (in collaboration with Vico Magistretti). They were highly imaginative yet functionally pragmatic, an appealing combination that has defined her work since.

From 1993 to 1996, Urquiola owned a studio with two friends, accepting commissions in architecture, interiors, showrooms, and restaurants. From 1996 to 2000 she managed the design group Lissoni Associati, then opened her own studio in Milan, focusing on product design, displays, and architecture.

Best known for her many designs for Moroso, Urquiola has also worked for De Padova, Agape, B&B, Alessi, Driade, Foscarini, Kartell, Flos, Molteni, and Artelano among other well-known furniture houses. She has won numerous design awards and is sought after as a speaker at conferences and universities.



# Coalesse Seating and Occasional Tables

Statement of Line

8

Seating

Bindu	10
Bob Chairs	11
Hosu	12

Occasional Tables

CG_1	13
Lagunitas Personal Table	14

# Statement of Line

## Seating

### Bindu

Specifying  
► Page 10



Mid-Back  
Office Chair



Executive Chair



Mid-Back  
Guest Chair

### Bob Chairs

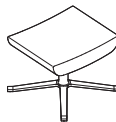
Specifying  
► Page 11



Lounge Chair



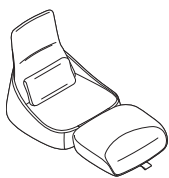
Lounge Chair with Headrest



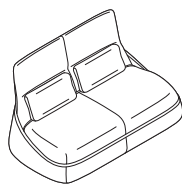
Ottoman

### Hosu

Specifying  
► Page 12



Lounge Chair with Ottoman  
and Lumbar Pillow



Two-Seat Sofa with Two  
Lumbar Pillows

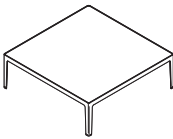


# Statement of Line

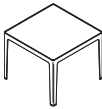
Occasional Tables

CG\_1

Specifying  
► Page 13



Low Square Table



High Square Table

Lagunitas Personal Table

Specifying  
► Page 14



## Bindu

DESIGN BRIAN KANE DESIGN ORIGIN: 2009 UNITED STATES

*Tip: Fabrics and leathers will appear loose with comfort wrinkles when upholstered.*



**Overall:** 25"D 25"W 35½"-40¼"H  
**Inside:** 18¾"D 18½"-19½"W 21"H  
**Seat:** 16"-20½"H  
**Arm:** 24¼"-29"H



**Overall:** 25"D 25"W 45½"-50¼"H  
**Inside:** 18¾"D 18½"-19½"W 31"H  
**Seat:** 16"-20½"H  
**Arm:** 24¼"-29"H



**Overall:** 25"D 24½"W 37¾"H  
**Inside:** 18¾"D 18½"-19½"W 21"H  
**Seat:** 17¾"H  
**Arm:** 26¼"H

## Standard Includes

- Bent plywood frame
- Chair: fabric
- Fabric backer
- Molded polypropylene foam
- Frame (Guest/Side): 4144 Black Gloss
- Base (desk and conference): 6205 Black Resin
- Dual wheel hard casters, desk and conference
- Back tilt lock
- Glides: black, non-marring, guest

## Required to Specify

- 1 Style number
  - 2 Fabric or leather color number for upholstery
  - 3 Options, if selected (see below)
- See *Surface Materials*, page 15.

	Options	U.S. List Price	MAP	Required to Specify
<b>Base</b>	• 8046 Polished Aluminum (available on CO300 & CO400)	+\$223	+\$156	Specify with 8046 Polished Aluminum.
	• 9207 Polished Trivalent Chrome (available on CO300G)	+\$223	+\$156	Specify with 9207 Polished Trivalent Chrome.
<b>Casters</b>	• Soft casters (available on CO300 & CO400)	+\$ 35	+\$ 25	Specify with soft casters.

## Specification Information

Style Number	U.S. Base List Price	MAP	Upholstery
<b>Mid-Back Office Chair</b>			
CO300	\$2420	\$1694	Remix
	\$4232	\$2962	Café Leather

COM/yds = 3, COL/sq ft = 66

## Executive Chair

CO400	\$2810	\$1967	Remix
	\$4740	\$3318	Café Leather

COM/yds = 3.25, COL/sq ft = 72

## Mid-Back Guest Chair

CO300G	\$2333	\$1633	Remix
	\$4145	\$2902	Café Leather

COM/yds = 3, COL/sq ft = 66

**Bob Chairs** by Walter Knoll  
DESIGN PEARSON LLOYD DESIGN ORIGIN: 2007 GERMANY

*Tip: Fabrics and leathers will appear loose with comfort wrinkles when upholstered.*

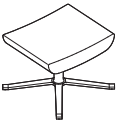
*Tip: Fabric backer is not required on Bob chairs.*



Overall: 34¼"D 35"W 31¾"H  
Inside: 21¾"D 20"W 17¼"H  
Seat: 17"H  
Arm: 21¾"H



Overall: 34¼"D 35"W 41¼"H  
Inside: 21¾"D 20"W 27½"H  
Seat: 17"H  
Arm: 21¾"H



Overall: 18½"D 19¾"W 15¼"H



**For Canadian Pricing**  
Multiply U.S. Price by the  
Canadian price factor.  
► See page 1 for details.

Standard Includes	Required to Specify
<ul style="list-style-type: none"><li>• Base: 4144 Black Gloss, 4145 Milk Gloss, 4193 Midnight Matte Brown, or 4239 Clay</li><li>• Upholstery for chair: fabric</li><li>• Glides</li></ul>	<ol style="list-style-type: none"><li>1 Style number</li><li>2 Fabric or leather color number for upholstery</li><li>3 Color number for base</li><li>4 Options, if selected (see below)</li></ol> ► See <i>Surface Materials</i> , page 15.

Options	U.S. List Price	MAP	Required to Specify
<b>Glides</b> <ul style="list-style-type: none"><li>• Felted glides</li></ul>	+\$22	+\$15	Specify with felted glides.

Specification Information			
Style Number	U.S. Base List Price	MAP	Upholstery

**Lounge Chair**

216	\$3594	\$2516	SoftNext
-----	--------	--------	----------

COM/yds = 3, COL/sq ft = 72

**Lounge Chair with Headrest**

221	\$4256	\$2979	SoftNext
-----	--------	--------	----------

COM/yds = 3½, COL/sq ft = 77

**Ottoman**

221-H	\$1307	\$ 915	SoftNext
-------	--------	--------	----------

COM/yds = 1, COL/sq ft = 22

## Hosu

DESIGN PATRICIA URQUIOLA DESIGN ORIGIN: ITALY

*Tip: Fabrics will appear loose with comfort wrinkles when upholstered.*

*Tip: Frame design allows back to flex to support occupants back shape.*

*Tip: Hexa fabrics (fabric group 10) were specifically designed by Patricia Urquiola for Hosu lounge and sofa seating.*

► See *Surface Materials*, page 18 for complete listing of Hexa fabrics.

Standard Includes	Required to Specify
<ul style="list-style-type: none"> <li>• Frame: plywood tab construction</li> <li>• Multiple densities of polyurethane foam and polyester fiber</li> <li>• Seat and back: fabric</li> <li>• Wrap: made from ABS plastic</li> <li>• Footrest: Café leather</li> <li>• Glides: non-adjustable</li> <li>• Pull tab on ottoman, if selected: nylon strap</li> <li>• Grommet for wire pass-through on model COURQLO, if selected</li> </ul>	<ol style="list-style-type: none"> <li>1 Style number</li> <li>2 Number of fabrics if contrasting fabric style number is selected</li> <li>3 Fabric color number for upholstery on seat and back</li> <li>4 Leather color number for footrest, if selected</li> <li>5 Color number for pull tab, if selected: <ul style="list-style-type: none"> <li>CL40 Red</li> <li>CL41 Blue</li> <li>CL42 Black</li> </ul> </li> </ol> <p>► See <i>Surface Materials</i>, page 15.</p>



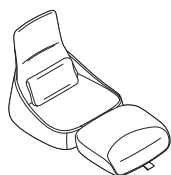
Specification Information			
Style Number	U.S. List Price	MAP	Upholstery

### Lounge Chair With Ottoman and Lumbar Pillow

COURQLO      \$4731      \$3312      SoftNext

Lounge: COM/yds = 5<sup>3</sup>/<sub>4</sub>, COL/sq ft = 126

Pillow: COM/yds = 1, COL/sq ft = 22



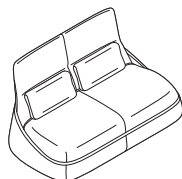
Overall: 35<sup>3</sup>/<sub>8</sub>"D 34<sup>3</sup>/<sub>8</sub>"W 35"H  
 Overall extended: 57"L  
 Inside: 24"D 31"W 14"H  
 Inside extended: 48"L  
 Pillow: 3"D 20<sup>9</sup>/<sub>10</sub>"W 10<sup>1</sup>/<sub>8</sub>"H  
 Ottoman: 24"D 31"W 8<sup>1</sup>/<sub>2</sub>"H

### Two-Seat Sofa with Two Lumbar Pillows

COURQS      \$6230      \$4361      SoftNext

Sofa: COM/yds = 6<sup>3</sup>/<sub>4</sub>, COL/sq ft = 143

Pillows: COM/yds = 1<sup>3</sup>/<sub>4</sub>, COL/sq ft = 39

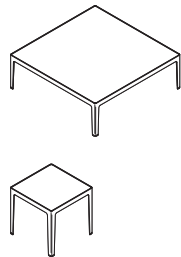


Overall: 35<sup>3</sup>/<sub>8</sub>"D 64<sup>5</sup>/<sub>8</sub>"W 35"H  
 Inside: 24"D 57<sup>5</sup>/<sub>8</sub>"W 14"H  
 Pillows: 3"D 24"W 10<sup>1</sup>/<sub>8</sub>"H



**For Canadian Pricing**  
 Multiply U.S. Price by the Canadian price factor.  
 ► See page 1 for details.

*Tip: CG\_1 solid wood frames and inserts are available in oak and walnut only. Wood veneer tops are available in all standard Coalesse finishes.*



### Standard Includes

- Frame/legs: hardwood oak
- Tops
  - Wood: veneer, oak, or walnut 1/2" thick top
- Leg inserts: solid surface, 1/4" thick
- Glides: non-adjustable, ships with felt option
- Matching top/legs
  - V3AK Natural Raw Oak
  - 36A2 Volcanic Oak

### Required to Specify

- 1 Style number
- 2 Wood color number for frame/legs
- 3 Wood color number for top selection
- 4 Leg insert finish:
  - 2010 Black
  - 2011 Midnight Brown
  - 2801 Glacier White
- 5 Options, if selected (see below)
  - See *Surface Materials*, page 15.

	Options	U.S. List Price	MAP	Required to Specify
Surface Materials	<b>Frame/legs</b>			
	Walnut	+\$254	+\$178	Specify <i>with frame/leg in walnut</i> and select finish number.
	<b>Top/legs</b>			
	Oak (42x42)	+\$912	+\$664	Specify <i>with top/leg in oak</i> and select finish number.
	Oak (20x20)	+\$742	+\$540	Specify <i>with top/leg in oak</i> and select finish number.

### Specification Information

Dimensions			Style Number	U.S. Base List Price	MAP
D	W	H			

### Low Square Table

42"	42"	14"	COCGW4242L	\$3721	\$2605
-----	-----	-----	------------	--------	--------

### High Square Table

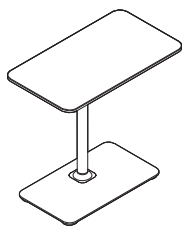
20"	20"	19"	COCGW2020H	\$2750	\$1925
-----	-----	-----	------------	--------	--------



**For Canadian Pricing**  
Multiply U.S. Price by the  
Canadian price factor.  
► See page 1 for details.

# Lagunitas Personal Table

DESIGN TOAN NGUYEN



Standard Includes	Required to Specify
<ul style="list-style-type: none"> <li>Table top: group 1 laminate with 3 mm flat plastic edge</li> <li>Table base with column: group 1 paint</li> <li>Four non-adjustable glides</li> <li>Ships ready to assemble</li> </ul>	1 Style number 2 Laminate color number for table top 3 Plastic edge color number for laminate table top, if selected 4 Paint color number base with column 5 Options, if selected (see below) ► See <i>Surface Materials</i> , page 15.

	Options	U.S. List Price	MAP	Required to Specify
<b>Surface Materials</b>	<b>Personal table base</b> <ul style="list-style-type: none"> <li>Lux paint (obsidian)</li> </ul>	+\$149	+\$108	Specify paint color number.

Specification Information							
Style Number	Dimensions			U.S. Base List Prices		MAP	
	D	W	H	Laminate:		Laminate:	
				Group 1	Group 1	Group 1	Group 1
				Solid	Woodgrain	Solid	Woodgrain
				HPL	HPL	HPL	HPL
COLAGTP	13"	24"	25"	\$933	\$933	\$680	\$680



**For Canadian Pricing**  
 Multiply U.S. Price by the  
 Canadian price factor.  
 ► See page 1 for details.

---

# Surface Materials

*Note: Actual colors will vary due to printing process.*

<b>Surface Materials—Upholstery</b>	<b>16</b>
Upholstery Palette	17
<b>Surface Materials—Leather/Faux</b>	<b>19</b>
Leather Matrix	20
Leather Palette	21
<b>Surface Materials—Wood</b>	<b>22</b>
Veneer Matrix	23
Veneer Palette	24
<b>Surface Materials—Metal/Paints</b>	<b>26</b>
Metal/Paints Matrix	27
Metal/Paints Palette	28
<b>Surface Materials—Miscellaneous</b>	<b>29</b>
Plastic and Miscellaneous Palette	30
<b>Care and Maintenance</b>	<b>31</b>

# Surface Materials—Upholstery

## Upholstery

All Coalesse textiles are priced by groups. Some Coalesse fabrics can be treated for flame retardancy, contact Customer Service. All Coalesse products are handcrafted making each unique. Certain fabrics and leathers will appear loose and may differ from like products due to comfort wrinkles when upholstered.

A contrasting welt is available on some products. Consult Customer Service for yardage or square feet requirements and prices. All stripes will be applied vertically unless customer specifies otherwise. Loose cushions on Coalesse products are not fully upholstered (not reversible).

Designtex and Maharam are graded in our pricing. Simply order Coalesse products with Designtex and Maharam specified. Designtex and Maharam fabrics are graded in on Coalesse products; however, Coalesse does not stock fabrics and can only respond based on Designtex and Maharam lead times. For current groups, refer to Coalesse website: [www.Coalesse.com](http://www.Coalesse.com).

Pre-approved CAL 133 Textiles Designtex and Maharam textiles have been graded into our pricing; however, not all textiles are recommended on all seating. For current group and approval information, please visit our website and click on FABRIC EVALUATIONS to obtain group pricing for a specific pattern.

## Seating Upholstery

Coalesse fabrics are priced by groups from 1-10 and leathers 1 and 2. Fabrics and leathers may be purchased separately, see page 17.

Some fabrics can be treated for flame retardancy, please contact customer service.

All products are handcrafted, making each unique. Certain fabrics and leathers will appear loose and may differ from like products due to wrinkles when upholstered.

A contrasting welt is available on some products. Consult Customer Service for yardage or square feet requirements for prices.

All stripes will be applied vertically unless customer specifies otherwise. Loose cushions on Coalesse products are not fully upholstered (not reversible).



# Upholstery Palette

Steelcase Fabric

## Dovetail by Designtex—Group 2

*Note: Coalesse reserves the right to reject fabrics when necessary if the quality or construction is not satisfactory for intended use. For most up to date information on fabric usage please check the fabric database on [www.coalesse.com](http://www.coalesse.com).*



## SoftNext—Group 2

*Note: Coalesse reserves the right to reject fabrics when necessary if the quality or construction is not satisfactory for intended use. For most up to date information on fabric usage please check the fabric database on [www.coalesse.com](http://www.coalesse.com).*



# Upholstery Palette

## Maharam—Remix—Group 7

*Note: Coalesse reserves the right to reject fabrics when necessary if the quality or construction is not satisfactory for intended use. For most up to date information on fabric usage please check the fabric database on [www.coalesse.com](http://www.coalesse.com).*

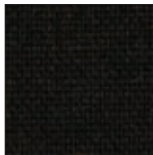
90% Wool, 10% Nylon; Width: 54"; Abrasion: 100,000 Double Rubs



Rust  
RE01



Pebble  
RE03



Dark Chocolate  
RE04



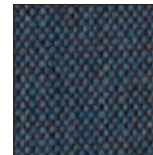
Linen Beige  
RE06



Concrete Grey  
RE08



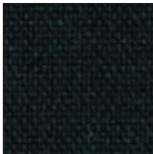
Sky Blue  
RE09



Blue Jean  
RE10



Ivy Green  
RE11



Night Blue  
RE13

Bindu	■
Hosu	•

### Legend

- = Not available
  - = Available
  - = Available but requires backer
- See specification pages for details.  
*Tip: See product page for details on pricing backer*

Surface Materials—Leather/Faux

Leather

ELMOSOFT, ELMORUSTICAL  
LEATHER CARE

Only the finest hides are used for Elmo leather. Expect some color variations from hide to hide due to the aniline state of the product. Color fading may occur if leather is exposed to direct or intense light. Care is required to allow this product to achieve the rich natural patina that beautiful natural leather develops. The hallmarks of this leather include some naturally occurring markings, such as healed scars, insect bites, stretch marks, and fat wrinkles. Elmorustical's leather treatment is very natural with little protection from spills or body oils. This rich leather will exhibit stains and oils through normal use. Coalesse is not responsible for discoloration, spotting, or staining on this leather.

Elmo Leather

Coalesse uses leathers that are provided by Elmo of Sweden. Elmosoft is a full grain, aniline dyed, semi-aniline finish. With Elmosoft leather, now recyclable and chromium-free, you have the opportunity to bid on green projects when requested. Elmosoft leathers are never corrected, buffed, or altered in any way. Coalesse purchases only original full grain leathers. The quality of this genuine leather can be felt in the hand immediately. Other leathers are often stiff because of the amount of pigment needed to cover the imperfections of an inferior hide. Using leather of a low quality affects the overall quality of the furniture it is upholstered on. You can feel confident in leather purchased from Coalesse.

Elmosoft

Group 1

L111	Midnight Blue
L112	Ebony
L128	Red Birch
L133	Espresso
L743	Forest Green
L747	Cigar

Café Leather

Price Group Leather

Café Leather

Applies to: Bindu	
L208	Black Tea
L209	Earl Grey
L210	Espresso Bean
L211	Chocolate Mousse
L212	Candied Pecan
L213	Chai
L214	Blueberry Tart

# Leather Matrix

*Note: Coalesse reserves the right to reject fabrics when necessary if the quality or construction is not satisfactory for intended use. For most up to date information on fabric usage please check the fabric database on [www.coalesse.com](http://www.coalesse.com).*

## Legend

- = Not available
- = Available
- See specification pages for details.

	Elmosoft Group 1	Café Leather
Bindu	■	■
Hosu	■	•

Disclaimer: Coalesse is pleased to provide this information. However, even after preliminary approval, Coalesse reserves the right to reject fabrics/leathers when necessary if the quality or construction is not satisfactory for the item it is intended for use on. Coalesse reserves the right to evaluate data daily and make any necessary changes or improvements to the information provided. Textile recommendations do not imply a warranty for the textiles. The textile manufacturer provides all warranties for textiles. All trademarks and trade names are the property of the different manufacturers. All pricing quotes for product should be obtained from your local Sales Representative or a Coalesse Customer Service Representative. Recommendations such as backing, Gore SP and CAL 133 will require additional cost and may require additional lead-time. All specifications are subject to change without notice.

# Leather Palette

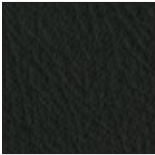
► See Leather Matrix for availability by product list, page 20.

## Elmosoft

*Note: Coalesse reserves the right to reject fabrics when necessary if the quality or construction is not satisfactory for intended use. For most up to date information on fabric usage please check the fabric database on [www.coalesse.com](http://www.coalesse.com).*



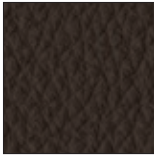
Midnight Blue  
L111



Ebony  
L112



Red Birch  
L128



Espresso  
L133



Forest Green  
L743



Cigar  
L747

Surface Materials—Wood

Wood  
Standard Wood Finishes

Coalesse’s primary wood finish, Clarity, is a water-borne UV topcoat, which protects the environment while providing exceptional durability and resistance to water and chemical stains. Contoured products, such as wood side chairs and occasional tables, are finished with post-catalyzed vinyl, which provides similar properties and matches the sheen and color of Clarity. Due to natural variations in wood, finished products may vary from samples in color, texture, and grain.

**Samples** contact Customer Service at 1.800.627.6770

- Oak**
- White Oak
  - Rift cut
  - Slip match
  - Mild grain
  - 4-8" wide leaves of 1/42" thick veneer, balanced on panel
  - No gaps between leaves
  - PB (particle board) core
  - Low sheen 15 or high sheen 35
- Walnut**
- American Black Walnut
  - Flat cut, plain sliced/book matched
  - Quarter cut/book matched
  - Narrow cathedrals, mild grain
  - 5-10" wide leaves of 1/42" thick veneer, balanced on panel
  - No gaps between leaves
  - PB (particle board) core
  - Low sheen 15 or high sheen 35

- Flat-cut—Low Sheen**
- Group 1**
- V1AW FC/LS Natural Walnut
  - V1EW FC/LS Dark Walnut

- Rift-cut—Low Sheen**
- Group 1**
- V3AK RC/LS Natural Oak
  - V3DK RC/LS Medium Gray Oak
  - V3EK RC/LS Black Brown Oak

- Rift-cut—High Sheen**
- Group 1**
- V33K RC/HS Medium Grey Oak
  - V34K RC/HS Black Brown Oak

- Quarter-cut—Low Sheen**
- Group 2**
- V2EW QC/LS Dark Walnut

- Rift-cut—Natural Veneer**
- Group 1**
- 36A2 RC/OP Volcanic Oak

FC=Flat Cut  
RC=Rift Cut  
QC=Quarter Cut  
WL=Wedge Lay-up  
HS=High Sheen  
LS=Low Sheen

## Veneer Matrix

### For Conference and Multipurpose Tables, Storage, and Caseloads

Legend	
•	= Not available
■	= Available
▶ See specification pages for details.	
	Oak Rift Cut – High Sheen
	Oak Rift Cut – Low Sheen
	Walnut Flat Cut – Low Sheen
	Walnut Quarter Cut – Low Sheen
	Oak Rift Cut – Natural Veneer
Occasional Tables	
CG_1	<div>•</div> <div>•</div> <div>•</div> <div>•</div> <div>■</div>

# Veneer Palette

For Conference and Multipurpose Tables, Storage, and Casegoods

► See *Veneer Matrix* for availability by product list, page 23.

---

## Flat Cut—Low Sheen



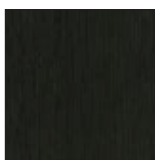
Natural Walnut  
V1AW

---

## Rift Cut—High Sheen



Medium Gray Oak  
V33K



Black Brown Oak  
V34K

---

## Rift Cut—Low Sheen



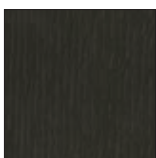
Natural Oak  
V3AK



Medium Gray Oak  
V3DK

---

## Rift Cut—Natural Veneer



Volcanic Oak 36A2



# Surface Materials—Glass

Glass

Not all glass selections are available on every product. Refer to glass matrix for availability by product.

Coalesse Back-Painted Glass

6720	Sand
6721	Pewter
6722	Mojave
6723	Terra
6724	Jade
6725	Ocean
ACM	Moonlight
ACS	Sage
ACP	Poppy
ACG	Goldenrod
ACB	Black
ACC	Sea Salt/ Crystal Spring

Glass

AC	Absolute Clear
CG	Clear Green

## Surface Materials—Metal/Paints

### Metal/Paint

Coalesse powder coats all painted metal components for an exceptionally durable, environmentally responsible finish — eliminating VOC's (volatile organic compounds) from being released into the environment. Electrostatically charged powder coat material is applied to an exacting thickness and then temperature baked, resulting in a smooth, flawless finish that is abrasion and impact resistant.

Metal/Paints Matrix

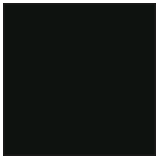
<b>Legend</b>	
• = Not available	
■ = Available	
▶ See specification pages for details.	
	4135 Black Matte
	4138 Graphite Gloss
	4140 Arctic White Gloss
	4141 Platinum Matte
	4142 Platinum Gloss
	4144 Black Gloss
	4145 Milk Gloss
	4146 Champagne Matte
	4147 Champagne Gloss
	4148 Midnight Brown Gloss
	4180 Graphite Matte
	4193 Midnight Brown Matte
	4242 Milk Matte
	4710 Low Gloss Black
	7196 Midnight Brown Textured
	7197 Anthracite Textured
<b>Seating</b>	
Bindu Side	• • • • • ■ • • • • • • • • • •

## Metal/Paints Palette

► See Metal/Paints Matrix for availability by product list, page 27.

---

### Bindu Paint Color



Black Gloss  
4144

Surface Materials—Miscellaneous

Solid	
Applies to:	
• CG_1	
2010	Black
2011	Midnight Brown
2801	Glacier White

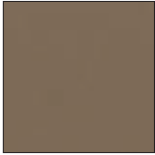
## Plastic and Miscellaneous Palette

---

### CG\_1—Solid Surface colors for the leg insert



Black  
2010



Midnight Brown  
2011



Glacier White  
2801

---

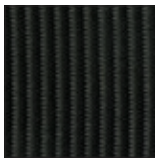
### Hosu—Ottoman Pull Tab



Red  
CL40



Blue  
CL41



Black  
CL42

# Care and Maintenance

## Chrome

Use commercial cleanser and polish, according to manufacturer's directions.

## Fabric

Under normal use, clean with soft cloth dampened with water. For spots and spills, we recommend professional cleaning. For COM, refer to the specific cleaning instructions recommended by the fabric supplier.

For stubborn stains use mixture of one gallon cold water, ½ cup bleach and ¼ cup mild soap for one hour.

Detergents can be used without harm, though they may remove some of the water and stain resistant properties in the fabric.

**Laminate and solid phenolic** should be cleaned with soap and water. For stubborn stains, use a non-abrasive household cleaner.

## Leather

Under normal use, regular dusting and vacuum cleaning are all that is necessary. For spots and spills, wipe excess liquid immediately. If necessary, use lukewarm water cleaning the entire area where spot occurred and air dry. For stubborn spots or stains, use a solution of mild non-detergent soap and air dry. For butter, oil, or grease, wipe excess with dry cloth and then leave alone. The spot will dissipate into the leather. Do not apply water.

## Granite/Glass

Under normal use, clean with Windex and soft cotton cloth.

## Powder coat finishes on chairs and table bases

should be cleaned with a liquid detergent and water. Remove stubborn stains with liquid cleanser, such as Formula 409.

## Polished Aluminum finishes

on table bases should be cleaned with a commercial powder, liquid, or paste metal cleaner and polish. Follow the manufacturer's directions.

**Veneers** should be cleaned regularly with mild soap and water and dried with a soft cloth.

*Tip: Never use ammonia-based cleaners or wax on wood surfaces.*

## Protecting Wood Surfaces

Use desk pads and coasters to help protect the finish against dents, scratches, moisture and hot and cold liquids. Do not use desk pads that have plastic backing. Use felt or leather pads on the bottoms of office equipment and accessories.

Periodically move desk accessories and other objects kept on the worksurface to ensure even aging.

Lift objects when you move them, instead of pulling or pushing them across the surface, to avoid scratching the surface. Avoid leaving vinyl binders on worksurface for long periods.

If you use a protective glass top, insert felt pads between the glass and the worksurface, to create an air space and allow the wood to breathe.

Keep your furniture away from direct sunlight. Avoid extreme temperatures and humidity. Maintain temperatures between 60 and 80 degrees Fahrenheit and humidity levels between 30 and 50 percent.

## Cleaning Wood Surfaces

Keep a supply of soft, clean, absorbent cloths handy for wiping up spills and regular dusting.

To dust, wipe with a slightly damp, soft cloth, using another soft cloth to dry. Always wipe the surface in the direction of the woodgrain.

Use a quality cleaner or flax soap formulated especially for use on wood surfaces. Do not use oils or ammonia. Dilute the cleaner as directed by the manufacturer. Dampen but do not saturate a soft cloth with the diluted cleaning solution. Wipe the surface in the direction of the woodgrain to remove dirt and fingerprints. Wipe the surface clean with a soft, dry cloth.

## Vinyl

Under normal use, clean with soft cloth dampened with mild soap solution. For stubborn stains and spills, a sponge or soft brush may be used with mild non-abrasive cleaner.

**Tables should be inspected and maintained regularly** by tightening screws and bolts, inspecting casters and glides for damage, and inspecting all moving parts for damage and wear.

# Trademark List

™/® The following is a non-exhaustive list of trademarks and registered trademarks for products of Steelcase Inc. or one of its related corporate entities: Agree, Airtouch, Alight, Amia, Answer, Aspekt, Avenir, Await, B-Free, Ballet, Bassline, Bindu, Bivi, Bix, Bottomline, Brody, Buoy, Cachet, Campfire, Capa, CF Series, CG\_1, Chord, Circa, Clipper, Cobi, Collaboration, Convene, Coupe, Cura, Currency, dash, Divisio, Duo, E-Table 2, Edge Series, Elbrook, Elective Elements, Embold, Empath, Everwall, Exponents, Folio, FrameOne, Gesture, Groupwork, Host, Hosu, i2i, Jenny, Kart, Kathryn, Kick, Lagunitas, Leap, Leela, LessThanFive, LiveBack, LiveSeat, Mackinac, Marien152, Max-Stacker, media:scape, Migration, Millbrae, Mineral, Mitra, Montage, Montara650, MoreThanFive, Move, Node, Ocular, Ology, Opus, Paperflo, Passerelle, Player, Pocket, Potrero415, QiVi, Radia, Regard, Relay, Reply, Ripple, Roam, Sarto, Scoop, Sebastopol, Senti Series, Senza, Shortcut, Sidewalk, Siento, Sieste, SILQ, Soffio, Sorrel, SOTO, Steelcase Eclipse, Steelcase Flex, Steelcase Karman, Steelcase Relay, Steelcase Rise, Steelcase Series, Surround, SW\_1, Switch, Sync, Tava, Tenor, Think, Thoughtful, Thread, Together, Train, Trees, Turnstone, Umami, Underscore, V.I.A., Verb, Verge, Verlay, Victor2, Visalia, WorkValet, and X-tenz.

™/® The following are trademarks or registered trademarks of AMQ Solutions, LLC: 3F, Activ, Amobi, Bixby, Bodi, Cluvo, Concur, Embank, FL-X, Iline, Jaku, Kinex, Personality Plus, Revi, S-Series, Siya, Tektis, Tizu, Uptake, and Zilo.

™/® The following are trademarks or registered trademarks of Orangebox Ltd., Cardiff, UK: Air3, Aspect, Avi, Away from the Desk, Border, Campers & Dens, Coppice, Cubb, Kim, On the QT, Ramsey, Skomer, Sully, Track-B, and Vale.

™/® The following are trademarks or registered trademarks of Viccarbe Habitat, S.L.: Aleta, Cambio, Designed in The Sun, Foro, Funda, Holy Day, Kelly, Last Minute, Noha, Savina, Sistema, Sistema, Viable, and Wrapp.

® The following are registered brands of Steelcase Inc. and its family of companies: Steelcase, AMQ, Coalesse, Designtex, Halcon, Orangebox, Smith System, and Viccarbe.

® The following registered trademarks are under license from AWI Licensing Company, Dover, DE: SoundScapes, DuraBrite, BioBlock, and Armstrong.

® The following registered trademarks are under license from Byrne Electrical, Rockford, MI: Interport, Mini-Port, Axil Z, and Ellora.

® The following is a registered trademark of DuPont, Wilmington, DE: Corian.

® The following is a registered trademark of Genlyte Thomas Company, Louisville, KY: Lightolier.

® The following is a registered trademark of Hilti Corporation, FL-9494 Schaan, Principality of Liechtenstein: Hilti.

® The following is a registered trademark of Leviton Manufacturing Company, Little Neck, NY: Decora.

® The following is a registered trademark of Mechanical Plastics Corp, Elmsford, NY: Toggle.

® The following is a registered trademark of Microsoft Corporation, Redmond, WA: Microsoft.

® The following are registered trademarks of Orangebox Ltd., Cardiff, UK: Orangebox.

® The following is a registered trademark of Panduit Corporation, Lockport, IL: Panduit.

® The following is a registered trademark of Trav (Press), Cuneo, Italy: Assisa.

® The following is a registered trademark of Virtual Ink, Boston, MA: mimioActive.

® The following registered trademarks are under license from Wilkhahn Furniture Products: Avera, Senzo, Versal, and Wilkhahn FS.

® The following are registered trademarks of Polyvision Corp: Flow, Motif, Polyvision, Sans, and Serif.

® The following is a registered trademark of Wilsonart International, Temple, TX: Chemsurf.

® The following is a registered trademark of Wiremold, West Hartford, CT: Wiremold.

® The following is a registered trademark of EMU Group S.P.A., Perugia, Italy: EMU.

® The following is a registered trademark of Security People, Inc.: Digilock.

® The following are registered trademarks of Natural Capital Partners Europe Limited: CarbonNeutral and the CarbonNeutral Certified logo.

™ The following is a trademark of Microsoft Corporation, Redmond, WA: Windows.

™ The following is a trademark of Rodman Industries, Inc., Oconomowoc, WI: ResinCore1.

™ The following is a trademark of Ultrafabrics, LLC, Elmsford, NY: Ultraleather.

™ The following trademarks are under license from Wilkhahn Furniture products: Cana, Linus, Logon, Picto, Range, Stitz, Thema, Timetable, and Tubis.

™ The following trademarks are under license from Walter Knoll: Andoo, Bob, Lazlo, Lox, Ribbon, and Together.

™ The following trademarks are under license from PP Møbler: Bar and Flag Halyard.

™ The following trademarks are under license from Carl Hansen: Elbow, Paddle, Shell, Wing, and Wishbone.

™ The following trademarks are under license from Cambridge Sound Management, LLC Cambridge, MA: QtPro Soundmasking, Qt Quiet Technology, and Sonet Qt.

™ The following is a trademark of Electri-Cable Assemblies, Shelton, CT: Interact.

™ The following is a trademark of Clestra Hauserman: IRYS.

™ The following is a trademark of Wiesner-Hager Möbel GmbH: Nooi.

™ The following are trademarks of Polyvision: Accord, a3, e3, Boundri, and Nota.

™ The following is a trademark of Bostock Company, Inc: SnapCab.

™ The following is a trademark of Williams-Sonoma, Inc: West Elm.

™ The following is a trademark of Elena Marquina Testor: nanimarquina.

™ The following is a trademark of Forbo International SA: Forbo.

Trademarks used herein are the property of Steelcase Inc. or their respective owners.