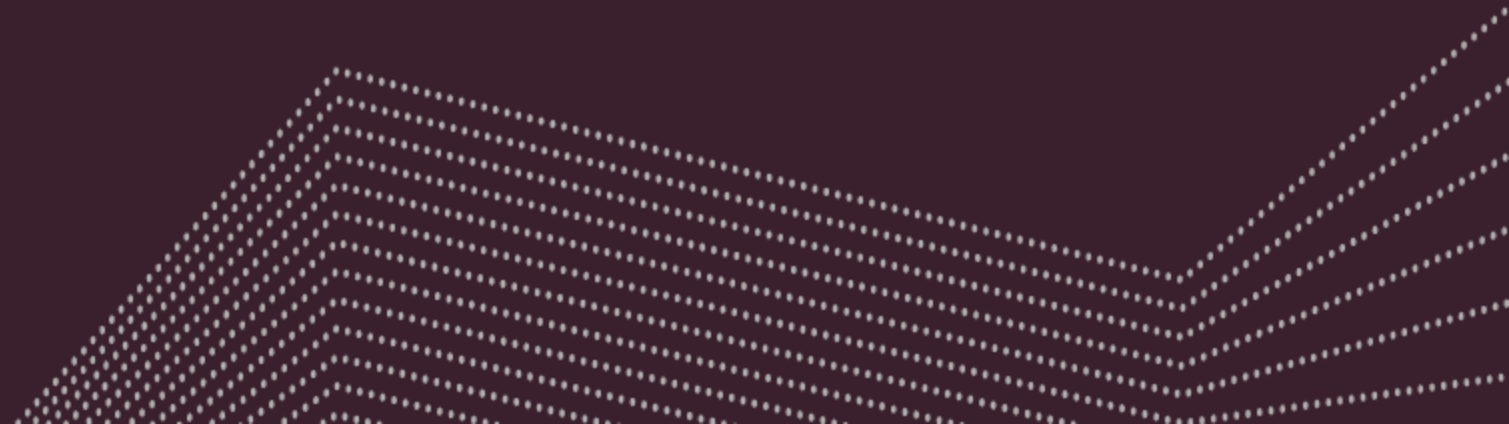


Campers & Dens in Learning

A collection of thought starters

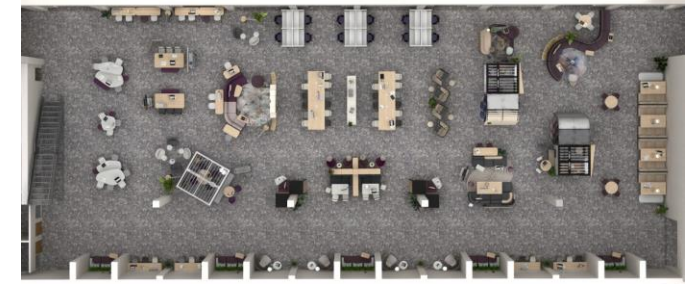
Campers & Dens in Learning

Library & Student Commons



Library & Student Commons

View A



Application Includes

Campers & Dens:

- CD02 Model C (Corner Glass) - Right Hand with Kink and Awning in Fabric finish.
- CD02 Model B (Glass Front & Rear) – Left Hand with Kink, Awning in Plywood.

Technology / Tools:

- Three Panel Mounted Monitor Brackets
- Three Contrasting Panels with Laminate Whiteboard

Products within Campers & Dens Settings:

- Camper 1: Aleta stools, Cubb Table, Amia, Migration Intro, Season-pouf
- Camper 2: Nolan Side table, Bassline round table, Jean Nouvel Sofa & ottoman. Cubb chairs, Two Seat Bench and C & D medium-wall mounted table.

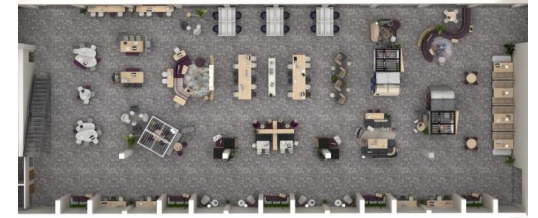
Details

1. The Camper solves a variety of students' needs in open common areas. Enclosed privacy is ideal for individual study sessions, virtual meetings, and interactive teamwork without distractions.
2. Campers & Dens' monitor bracket option makes it possible to support integrated technology inside and outside of the Camper.
3. Utilize the whiteboard laminate material in these areas to enhance brainstorming, as well as encourage an interactive discussion.
4. Plants help create a warm and welcoming environment; reducing stress and anxiety for students.



Library & Student Commons

View B



Application Includes

Campers & Dens:

- CD02 Model B (Glass Front & Rear) – Left Hand with Kink, Awning in Plywood.

Technology / Tools:

- Two Panel Mounted Monitor Brackets
- Two Contrasting Panels with Laminate Whiteboard

Products within Campers & Dens Settings:

- Nolan Side table, Bassline round table, Jean Nouvel Sofa & ottoman, Cubb chairs, Two Seat Bench and C & D medium-wall mounted table.

Details

1. Place the entrance of the Camper facing away from the workstations or add screens for additional privacy.
2. People desire the restorative effects of human-nature connections. Incorporating the look and feel of wood in the materiality of the space, such as plywood for the Camper's Awning, provides a warmth and connectedness to the outdoors.
3. Utilize the outsides of the Camper with different functions to create collaborative "dens".
4. Adding a monitor to any of the walls helps enable more effective sharing, collaboration, and co-development of work.



Library & Student Commons

View A



Application Includes

Campers & Dens:

- CD02 Model D (Glass Front) - Left Hand with Cabin, Kink.

Technology / Tools:

- Panel Mounted Monitor Bracket
- Two Contrasting Panels with Laminate Whiteboard

Products within Campers & Dens Settings:

- Cubb chair, cubb two-seat bench, Shortcut-stool, Flex Single Rectangle Table, Border Two Seat, Cubb barstool and C & D medium - wall mounted table.

Details

1. Consider adding the Camper & Den Kink to create a more inviting and welcoming feel.
2. Position applications in-between Campers to fully leverage the layers of privacy.
3. The Camper's integrated lighting, ventilation, and roof modes ensure the user has optimal conditions to support them throughout the day.
4. Utilize the whiteboard laminate material in these areas to encourage ideating and interactive discussions.



Library & Student Commons

View B



Application Includes

Campers & Dens:

- CD02 Model D (Glass Front) - Left Hand with Cabin, Kink

Technology / Tools:

- Panel Mounted Monitor Bracket
- Two Contrasting Panels with Laminate Whiteboard

Products within Campers & Dens Settings:

- Cubb chair, cubb two-seat bench, Shortcut-stool, Flex Single Rectangle Table, Border Two Seat, Cubb barstool and C & D medium - wall mounted table.

Details

1. The Cabin facing a wall or window will create an additional private space for focus work. The Cabins are available in either a solid or slatted roof, and a light is optional to help brighten the space.
2. Consider adding an Awning to create a social space that offers both visual and psychological shielding. This accessory creates an environment for people to socialize casually, while also maintaining a sense of security.
3. Campers & Dens' monitor bracket option makes it possible to support integrated technology inside and outside the Camper.
4. Planters help create a warm and welcoming environment; reducing stress and anxiety for students and faculty.



Library & Student Commons

View A

Application Includes

Campers & Dens:

- CD02 Model D (Glass Front) - Right Hand with Cabin, small-wall mounted table and Awning in Plywood

Technology / Tools:

- 1 Hoop Mounted Monitor Bracket
- 2 Panel Mounted Monitor Bracket
- Four Contrasting Panels with Laminate Whiteboard

Products within Campers & Dens Settings:

- Two C & D single upholstered seat, Burin table, Cubb barstool, Cubb wire-chair, Gumdrop table, Together bench, Simple Table.

Details

1. Campers & Dens offers an inviting space to gather for productive meetings.
2. Anchor any applications shown on the exterior of the Camper with tools like whiteboards or monitors.
3. Collaboration spaces are intentionally woven throughout and adjacent to workstations to promote connection and sharing.
4. Design the settings to offer different choices of postures, including lounge seating, conference table, and standing table heights if possible.
5. People desire a human-nature connection. Incorporating the feel of nature in the materiality of the space, such as plywood for the Camper's Awning, offers the appearance and warmth of wood.



Library & Student Commons

View B

Application Includes

Campers & Dens:

- CD02 Model D (Glass Front) - Right Hand with Cabin, and Awning in Plywood

Technology / Tools:

- 1 Hoop Mounted Monitor Bracket
- 2 Panel Mounted Monitor Bracket
- Four Contrasting Panels with Laminate Whiteboard

Products within Campers & Dens Settings:

- Two C & D single upholstered seat, Burin table, Cubb barstool, Cubb wire-chair, Gumdrops table, Together bench, Simple Table and C & D small-wall mounted table.

Details

1. Campers & Dens' monitor bracket option makes it possible to support integrated technology inside and outside of the Camper.
2. Utilize the whiteboard laminate material in these areas to enhance brainstorming, as well as encourage interactive discussions.
3. Freestanding screens are a welcome addition to larger spaces, helping provide visual interest as well as separation and privacy to visitors, while still maintaining important sightlines for staff.



Library & Student Commons

View C

Application Includes

Campers & Dens:

- CD02 Model D (Glass Front) - Right Hand with Cabin, and Awning in Plywood

Technology / Tools:

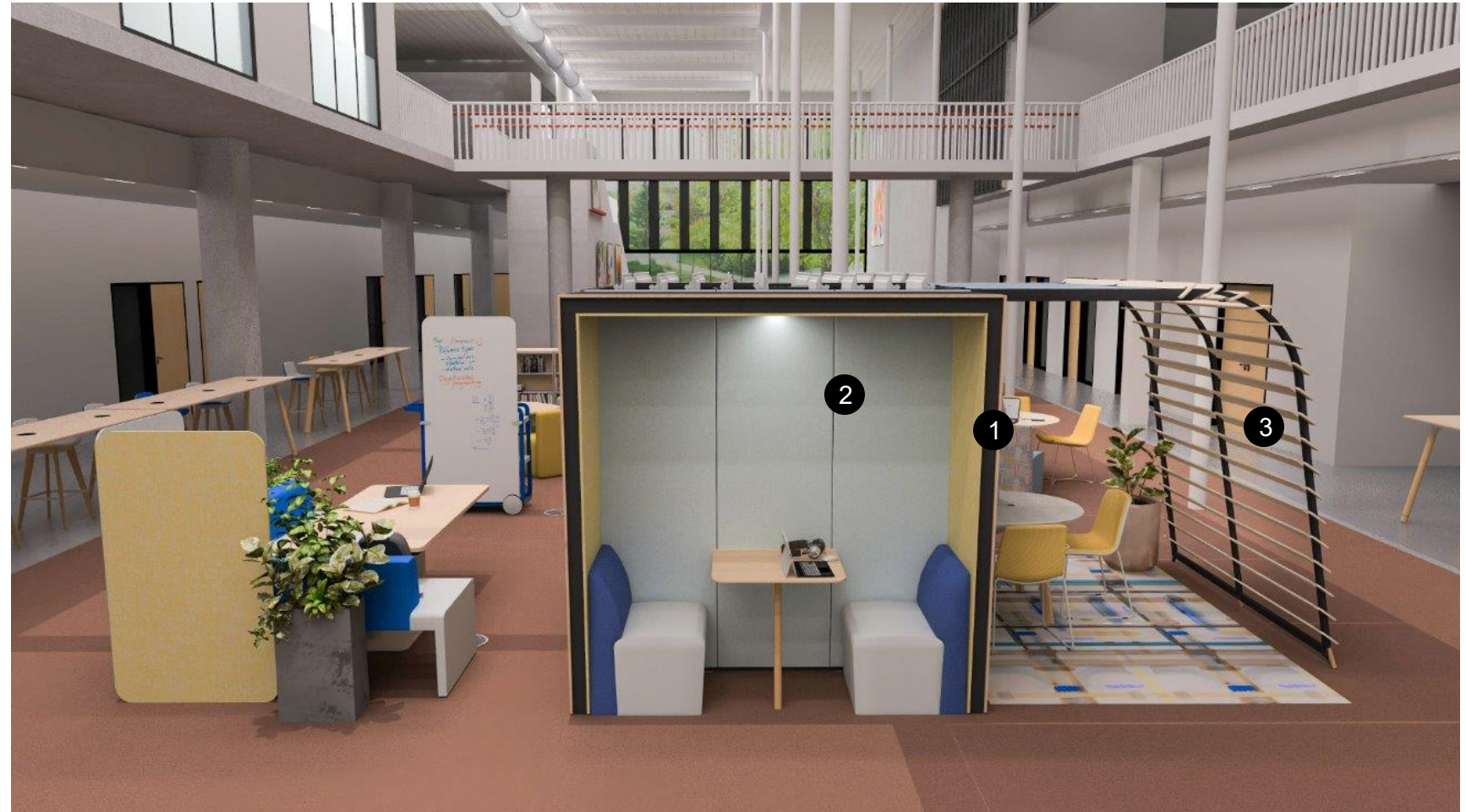
- 1 Hoop Mounted Monitor Bracket
- 2 Panel Mounted Monitor Bracket
- Four Contrasting Panels with Laminate Whiteboard

Products within Campers & Dens Settings:

- Two C & D single upholstered seat, Burin table, Cubb barstool, Cubb wire-chair, Gumdrops table, Together bench, Simple Table and C & D small-wall mounted table.

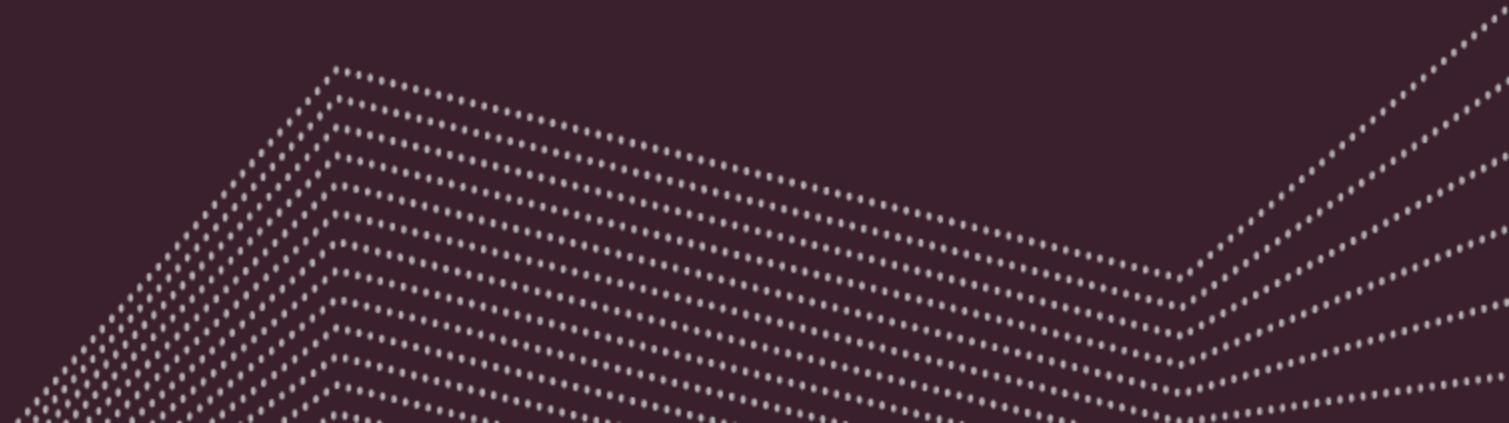
Details

1. Campers & Dens has a wide range of finishes and materiality which can be personalized to the school's branding to create a cohesive design and compliment other products.
2. The interior fabric panels in the Cabin help absorb sound and reduce reverberation, making the space more acoustically private and comfortable.
3. Introduce Awnings through the floorplan as a signal for semi-private gathering.



Campers & Dens in Learning

Faculty Offices



Faculty Offices

View A

Application Includes

Campers & Dens:

- Two CD05 Model B (Glass Front & Rear) – Left Hand with one Awning
- One CD05 Model D (Glass Front) – Left Hand
- One CD05 Model C (Corner Glass) – Left Hand

Technology / Tools:

- Two Hoop Mounted Monitor Bracket
- Two Contrasting Panels with Laminate Whiteboard

Products within Campers & Dens Settings:

- Marteen Stools, Cubb table, Amia chair, Activ 2.0 Desk, AMQ Revi, Greenpoint desk, Gesture, Kent Guest chair, Greenpoint bookcase.

Details

1. Campers & Dens' versatility enables faculty to have both a private office and a shielded meeting room within an open plan area.
2. The Camper's integrated lighting, ventilation, and roof modes ensure the user has optimal conditions to support them for hours throughout the day.
3. The extensive range of materiality offered on Campers & Dens helps faculty and facilities to create the brand of the school and to accommodate the preferences of staff.



Faculty Offices

View B

Application Includes

Campers & Dens:

- One CD05 Model C (Corner Glass) – Left Hand

Technology / Tools:

- Hoop Mounted Monitor Bracket

Products within Campers & Dens Settings:

- Greenpoint desk, Gesture, Kent Guest chair, Greenpoint bookcase.

Details

1. This application can serve as an owned office or a shared faculty space anywhere on campus.
2. Utilize the exterior walls of Campers to enhance adjacent applications. Add monitors to facilitate virtual connections.
3. The exterior sides of the Camper create a semi-private area where faculty can meet with colleagues or interact with a group of students.
4. Semi-private seating supports users by providing a level of additional privacy during individual focus work. This setting supports the balance of work with individual visual privacy and a respite feel within a multi-user space.



Faculty Offices

View C

Application Includes

Campers & Dens:

- Two CD05 Model B (Glass Front & Rear) – Left Hand with one Awning
- One CD05 Model D (Glass Front) – Left Hand
- One CD05 Model C (Corner Glass) – Left Hand

Technology / Tools:

- Two Hoop Mounted Monitor Bracket
- Two Contrasting Panels with Laminate Whiteboard

Products within Campes & Dens Settings:

- Marteen Stools, Cubb table, Amia chair, Activ 2.0 Desk, AMQ Revi, Greenpoint desk, Gesture, Kent Guest chair, Greenpoint bookcase.

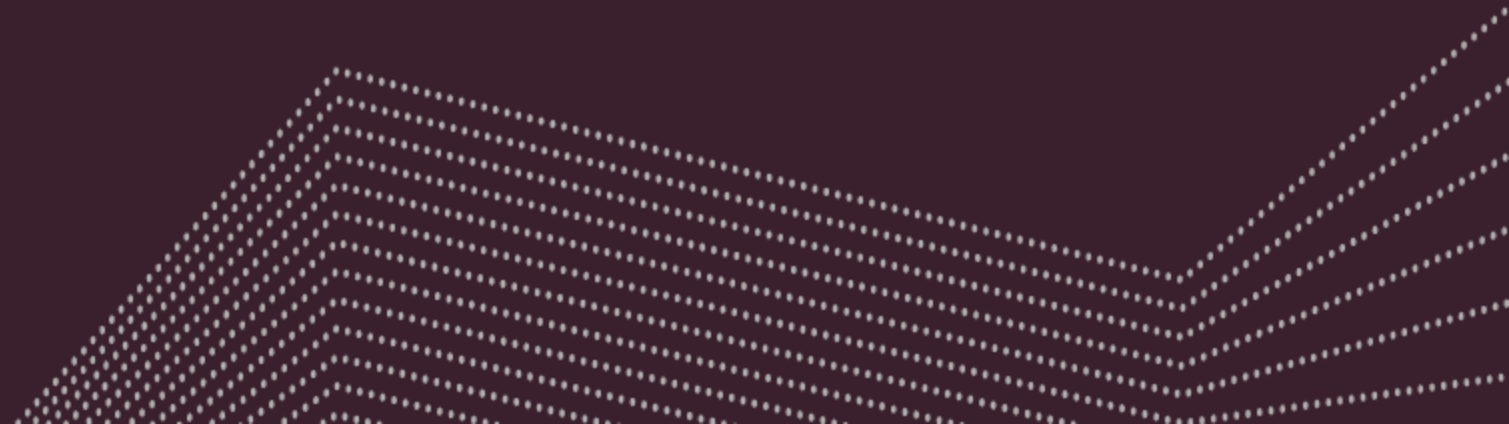
Details

1. Utilize the exterior walls of the Camper to create adjacent "dens" to foster collaboration.
2. Campers & Dens' B configuration allows daylight to enter the Camper when placed beside a window, creating a bright and open environment perfect for individuals who prefer not to feel enclosed.
3. The Camper is perfect for balancing quiet focus and private meetings.
4. The Awning provides a place to gather and connect with light visual privacy.



Campers & Dens in Learning

Co-Working Admin Spaces



Co-working Admin Spaces

View A

Application Includes

Campers & Dens:

- One CD05 Model D (Glass Front) – Left Hand with Awning, Kink and cabin.
- One CD02 Model D (Glass Front) – Right Hand with Hacking.

Technology / Tools:

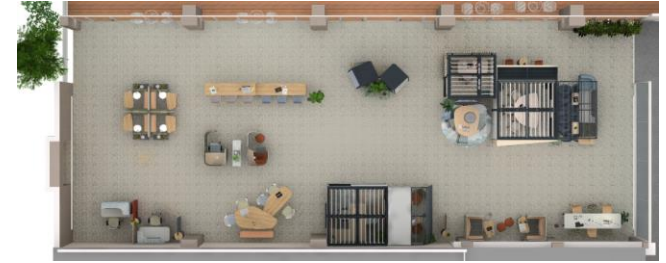
- Two Hoop Mounted Monitor Bracket
- Three Contrasting Panels with Laminate Whiteboard

Products within Campers & Dens Settings:

- Ocular Coupe table, Aleta chairs, Grab Pouf, Ensemble, Lagunitas Personal Table.

Details

1. Campers & Dens provide acoustical and visual privacy to users during a virtual call.
2. Position two campers to intersect, creating a shared space that can be utilized for collaborative meetings.
3. By introducing an awning, a layer of privacy is created beyond the Camper itself, offering a comfortable feeling and a hint of visual privacy.



Co-working Admin Spaces

View B

Application Includes

Campers & Dens:

- One CD05 Model D (Glass Front) – Left Hand with Awning, Kink and cabin.
- One CD02 Model D (Glass Front) – Right Hand with Hacking.

Technology / Tools:

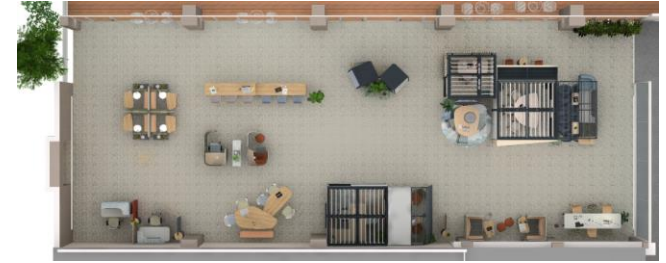
- Two Hoop Mounted Monitor Bracket
- Three Contrasting Panels with Laminate Whiteboard

Products within Campers & Dens Settings:

- Migration Intro, Karman, Season-Pouf, Ocular Coupe table, Aleta chairs, Grab Pouf, Ensemble, Lagunitas Personal Table.

Details

1. Utilize the whiteboard laminate material option in these areas to enhance brainstorming and idea sharing, as well as encourage an interactive discussion.
2. Adding a monitor is essential to ensure people can share/display information as needed.
3. Plywood on the Campers & Dens' Hacking helps bring biophilic elements inside the workplace.



Co-working Admin Spaces

View C

Application Includes

Campers & Dens:

- One CD05 Model D (Glass Front) – Left Hand with Awning, Kink and cabin.
- One CD02 Model D (Glass Front) – Right Hand with Hacking.

Technology / Tools:

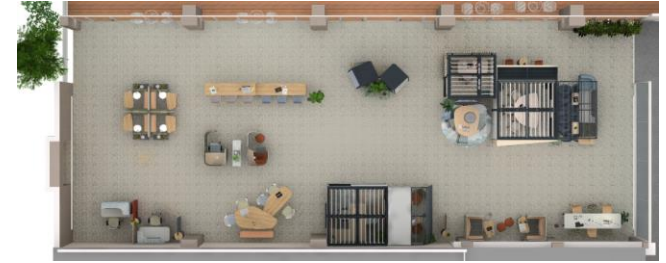
- Two Hoop Mounted Monitor Bracket
- Three Contrasting Panels with Laminate Whiteboard

Products within Campers & Dens Settings:

- Ensemble, Lagunitas Personal Table, Cubb Barstool, Campfire Height Table, Flex Stand, Flex Freestanding Screen/

Details

1. For additional user privacy, place a privacy screen between two workstations.
2. Positioning a Cabin near a wall or window provides another layer of privacy with the benefits of natural daylighting. The Cabins are available in either a solid or slatted roof, and a light is optional to help brighten the space.
3. By introducing an awning, a layer of privacy is created beyond the Camper itself, offering a comforting feeling and a hint of visual privacy.



Gaming

View A

Application Includes

Campers & Dens:

- CD05 Model C (Corner Glass) – Left Hand with Up to Glass Corner Wavy Hacking, Awning and Cabin
- CD02 Model C (Corner Glass) – Left Hand with Awning and Cabin

Technology / Tools:

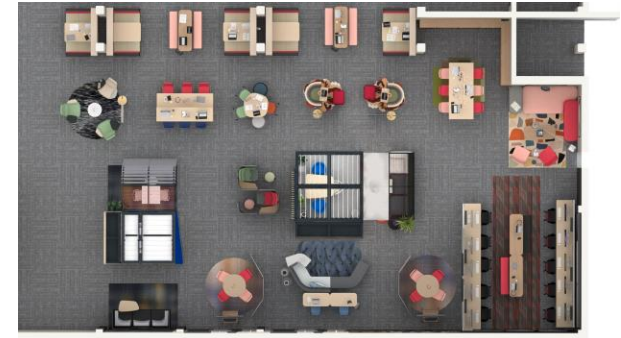
- Hoop Mounted Monitor Bracket
- Panel Mounted Monitor Bracket

Products within Campers & Dens Settings:

- Mackinac Foundation, Copa chairs, Grab Pouf, Serpentine Sofa, Lagunitas Table, Cambio Round Table.

Details

1. Campers & Dens creates an enclosed space for coaches to replay and strategize past competitions while offering gamers additional surrounding spaces to meet their needs.
2. Campers & Dens' monitor brackets makes it possible to support integrated technology inside and outside of the Camper, providing immersive gaming spaces.
3. The wide range of finishes available allows for personalization, aligning the space with team colors and branding for a cohesive look.
4. Controlling distractions in gaming environments can significantly enhance focus and productivity by providing quieter spaces for gaming sessions and discussions..



Campers & Dens in Learning

Gaming

View B

Application Includes

Campers & Dens:

- CD05 Model C (Corner Glass) – Left Hand with Up to Glass Corner Wavy Hacking, Awning and Cabin
- CD02 Model C (Corner Glass) – Left Hand with Awning and Cabin

Technology / Tools:

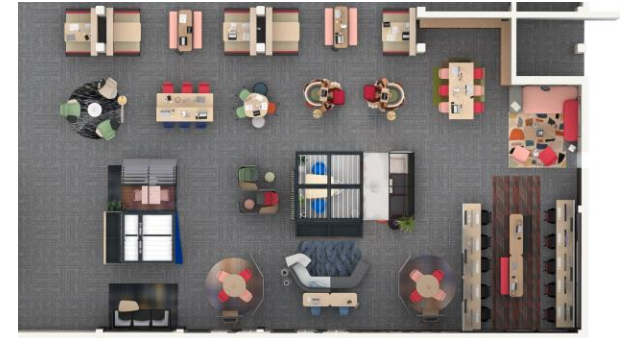
- Seam Mounted Monitor Bracket

Products within Campers & Dens Settings:

- Away from the desk, Greenpoint Credenza, Flex Work Tables, Cubb stools.

Details

1. Cabins are an added layer that provide sanctuary in the middle of an open plan so gamers can decompress.
2. The Cabin functioning as an extension of the Camper's walls, creates a nook where 4 players can play console games such as Switch, Xbox and PlayStation.
3. A combination of comfortable seating and versatile tables supports a range of gaming postures and activities, based on each players' preferences.



Campers & Dens in Learning

Gaming

View C

Application Includes

Campers & Dens:

- CD02 Model C (Corner Glass) – Left Hand with Awning and Cabin

Technology / Tools

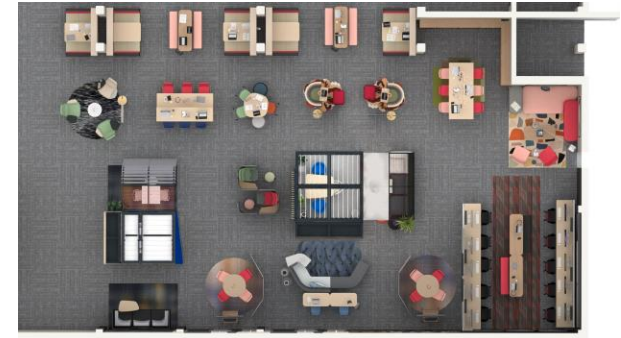
- Panel Mounted Monitor Bracket

Products within Campers & Dens Settings:

- Away from the desk, Marien152, Burin Table.

Details

1. Campers & Dens supports varied postures for both active play and relaxed watching.
2. LED lighting, bold colors, and textured materials create an energetic backdrop that reflects the playfulness of the gaming culture.
3. Campers & Dens provides spatial definition making it ideal for quick chats, tabletop games, or brainstorming sprints.



Campers & Dens in Learning

Gaming

View D

Application Includes

Campers & Dens:

- CD05 Model C (Corner Glass) – Left Hand with Up to Glass Corner Wavy Hacking, Awning and Cabin
- CD02 Model C (Corner Glass) – Left Hand with Awning and Cabin

Technology / Tools

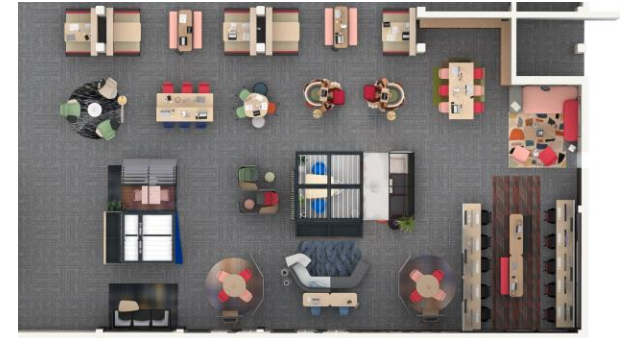
- Panel Mounted Monitor Bracket

Products within Campers & Dens Settings:

- Marien152, Burin Table, C & D Small-Wall mounted table, C & D Sofa.

Details

1. Campers and Dens allow for varying degrees of privacy and interaction—perfect for gaming, learning, or meetings where co-creation is important. Whether it's a quiet match or a vibrant team challenge, the structure supports the shift.
2. Consider using a Cabin to create quick touchdown areas, or a quiet study pod in the gaming hub.
3. Campers and Dens provides a variety of options for layouts in an open space, allowing for intentional activity settings.



Campers & Dens in Learning

Gaming

View A

Application Includes

Campers & Dens:

- CD05 Model D (Glass Front) – Left Hand with Kink, Cabin and Awning

Technology / Tools:

- Hoop Mounted Monitor Bracket

Products within Campers & Dens Settings:

- Ocular, Campfire Lounge, Sully, Elbrook Tables, Tenor, Lagunitas Personal Table and Noha Chair.

Details

1. Campers & Dens allows for monitor mounting in various positions. Technology is an important tool used for both teaching and learning in this setting and should be able to be easily viewed by all users in the space.
2. A combination of comfortable seating and tall stool-height tables can provide a tiered setting that supports a variety of activities such as console gaming, meetings, coaching and lounging.
3. Leverage the exterior of the Camper with tools like whiteboards or monitors to make all sides functional and inviting.



Gaming

View B

Application Includes

Campers & Dens:

- CD05 Model D (Glass Front) – Left Hand with Kink, Cabin and Awning

Technology / Tools:

- Hoop Mounted Monitor Bracket
- Wall specified as Laminate Whiteboard

Products within Campers & Dens Settings:

- Campfire Lounge, Elbrook Tables, Tenor, Colubi Lounge and Flex Single Rectangle Table.

Details

1. Campers & Dens allows for monitor mounting in various positions. Technology is an important tool used for both teaching and learning in this setting and is easily viewed by all users in the space.
2. A combination of comfortable seating and versatile tables can provide a setting that supports a variety of activities such as working, reading, collaborating or socializing.
3. The Camper solves a variety of students' needs in open common areas. Shielded privacy from the awning is ideal for individual study sessions, collaborative project teamwork, and interactive meetings without distractions.



Calm Space

View A

Application Includes

Campers & Dens:

- CD05 Model D (Glass Front) – Right Hand with Kink, Cabin and Awning
- CD02 Model B (Glass Front & Rear) – Left Hand with Full Depth Wavy Hacking and Awning

Technology / Tools:

- Hoop Mounted Monitor Bracket
- Panel Mounted Monitor Bracket
- Contrasting Panels with Laminate Whiteboard

Products within Campers & Dens Settings:

- Ensemble, Lagunitas Table, Aleta, Sully, Elbrook Table.

Details

1. Plywood on the Campers & Dens' Hacking helps bring biophilic elements inside the workplace.
2. The Camper's integrated lighting, ventilation, and roof modes ensure the user has choices available to support their comfort and wellbeing throughout the day.
3. Leverage materiality to create a calm pleasing environment in the open, and position Campers and Dens to take advantage of views of nature while sharing natural daylight.



Respite Room

View B

Application Includes

Campers & Dens:

- CD02 Model B (Glass Front & Rear) – Left Hand with Full Depth Wavy Hacking and Awning

Technology / Tools:

- Panel Mounted Monitor Bracket

Products within Campers & Dens Settings:

- Hosu, Burin Table, Carl Hansen Chair, Flex Active Frames and Cambio Table.

Details

1. People desire a human-nature connection. Incorporating the feel of nature in the materiality of the space, such as plywood for the Camper's Hacking, offers the appearance and warmth of wood.
2. Campers & Dens' B configuration allows daylight to enter the Camper when placed beside a window, creating a bright and open environment perfect for individuals who prefer not to feel enclosed.
3. Respite spaces support mental wellbeing by providing an area for people to take a short break, unwind, and reduce stress.



Campers & Dens in Learning

Calm Space

View C

Application Includes

Campers & Dens:

- CD05 Model D (Glass Front) – Right Hand with Kink, Cabin and Awning

Technology / Tools:

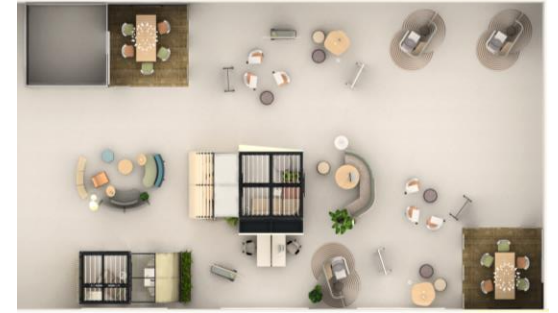
- Hoop Mounted Monitor Bracket
- Contrasting Panels with Laminate Whiteboard

Products within Campers & Dens Settings:

- Away from the Desk, Paper Table and Sully.

Details

1. Utilize the whiteboard laminate in these areas to encourage brainstorming and interactive discussions.
2. Utilize the exterior walls of the Camper as starter walls to create adjacent "dens" to delineate additional spaces for respite..
3. Signal to users the environment is flexible, versatile and agile, so they feel welcome to make it their own.



Calm Space

View D

Application Includes

Campers & Dens:

- CD05 Model D (Glass Front) – Right Hand with Kink, Cabin and Awning

Technology / Tools:

- Hoop Mounted Monitor Brackets
- Seam Mounted Monitor Bracket
- Contrasting Panels with Laminate Whiteboard

Products within Campers & Dens Settings:

- Aleta Chair, Elbrook Tables, Greenpoint Bench, Greenpoint Storage and Karman.

Details

1. Consider using a Cabin on the larger size Camper (CD05) to create touchdown areas with flexible workstations.
2. Providing touchdown spaces empowers and enables people to choose environments that best suit their needs and preferences.
3. The fabric panels inside the Cabin help absorb sound, making the space more acoustically private and comfortable.
4. Incorporating the feel of nature in the space can reduce stress and anxiety for students and faculty.



Student Services

View A

Application Includes

Campers & Dens:

- CD05 Model C (Corner Glass) – Right Hand with Cabin.
- CD02 Model C (Corner Glass) – Right Hand with Kink.
- CD02 Model D (Glass Front) – Right Hand with Kink.

Technology / Tools:

- Hoop Mounted Monitor Bracket
- Panel Mounted Monitor Bracket
- Contrasting Panels with Laminate Whiteboard

Products within Campers & Dens Settings:

- Cambio Round Table and Karman.

Details

1. A room scheduler can provide visibility and efficiency to staff members by allowing them to easily book a meeting room.
2. Consider adding the Campers & Dens 'Kink' to create a more inviting 'front porch' feel.
3. Campers & Dens' monitor bracket option makes it possible to support integrated technology inside and outside of the Camper to help communicate shared information.



Student Services

View B

Application Includes

Campers & Dens:

- CD02 Model C (Corner Glass) – Right Hand with Kink.
- CD02 Model D (Glass Front) – Right Hand with Kink.

Technology / Tools:

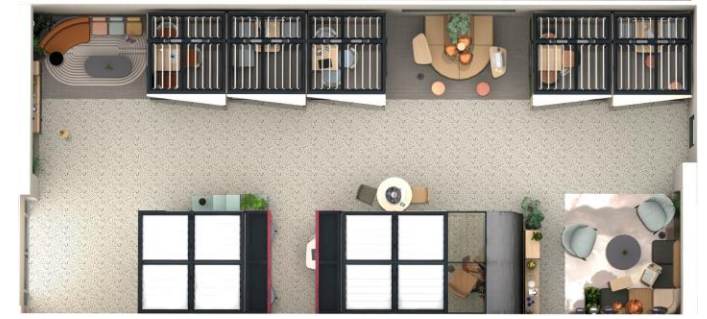
- Panel Mounted Monitor Bracket
- Contrasting Panels with Laminate Whiteboard

Products within Campers & Dens Settings:

- Shortcut Chair, Simple Table, C&D Upholstered Seating and C&D Wall Mounted Table.

Details

1. Campers & Dens provide acoustical and visual privacy to students & admin during a virtual meeting.
2. Consider adding the Campers & Dens 'Kink' to create more shielding, privacy and a feeling of safety.
3. Seamless integrated technology in this setting allows for effective communication between faculty, students, and their parents.
4. The addition of KwickSwitch allows user to control their visual and informational privacy within this pod with the click of a switch.



Student Services

View C

Application Includes

Campers & Dens:

- CD02 Model D (Glass Front) – Right Hand with Kink.

Technology / Tools:

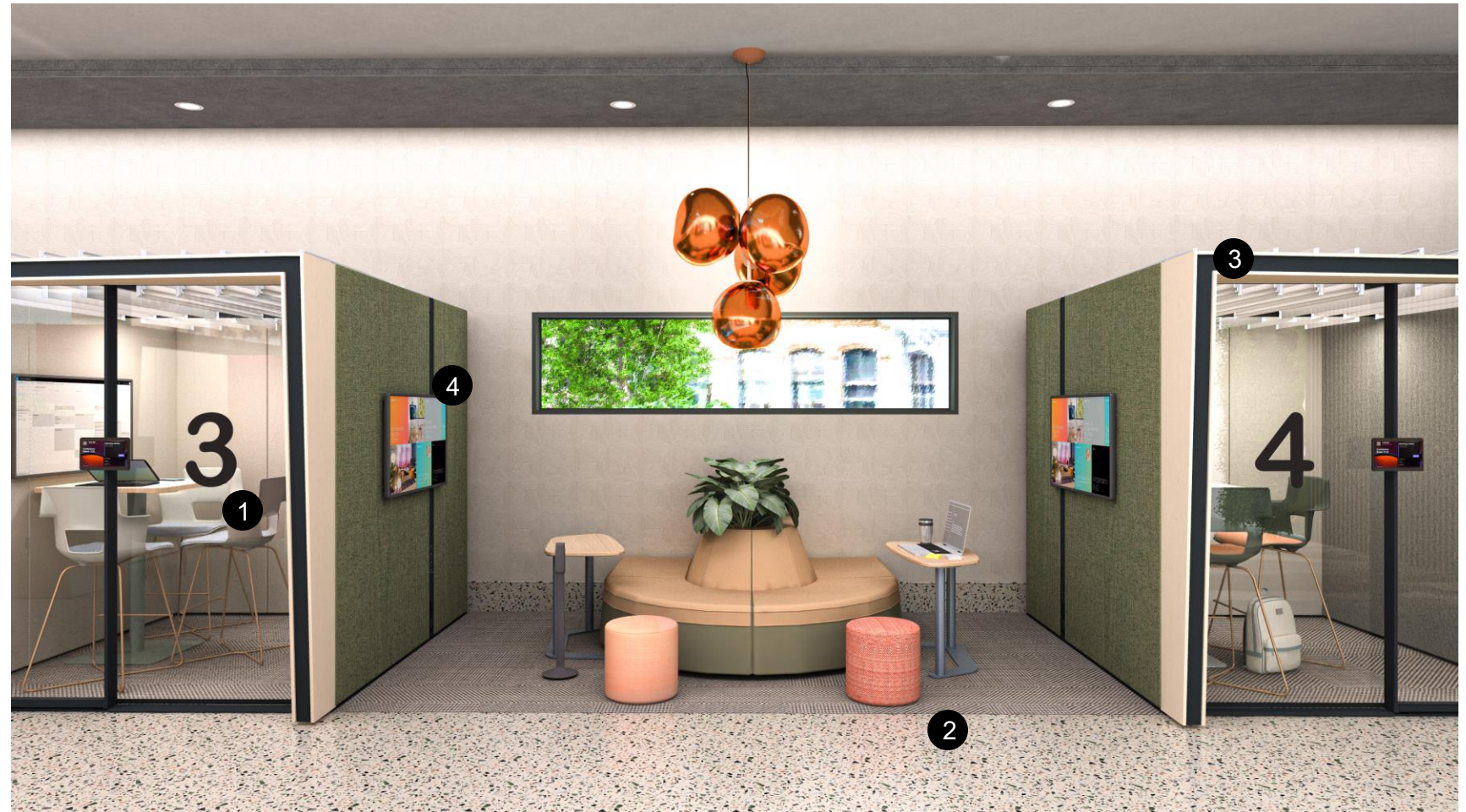
- Panel Mounted Monitor Bracket
- Contrasting Panels with Laminate Whiteboard

Products within Campers & Dens Settings:

- Shortcut Chair and Simple Table.

Details

1. The space inside Campers and Dens can be supplied with any given furniture to meet the needs of staff and students.
2. Spacing Campers & Dens with a gap in-between creates an opening for another setting to save capital and expenses.
3. Consider adding the Campers & Dens 'Kink' to create a more inviting feel.
4. Incorporating digital artwork on monitor screens can help reduce stress and anxiety of students while waiting for their session. By utilizing mounted monitors, the display can be easily repurposed for other content sharing if needed.



Student Services

View D

Application Includes

Campers & Dens:

- CD05 Model C (Corner Glass) – Right Hand with Cabin.
- CD05 Model D (Glass Front) – Right Hand with Awning and Cabin.

Technology / Tools:

- Seam Mounted Monitor Bracket
- Contrasting Panels with Laminate Whiteboard

Products within Campers & Dens Settings:

- Slope Chair, Await Table, Giro Table, Migration Pro HAD, Marien 152, Credenza and Amia Chair .

Details

1. Save the cost of building private rooms with Campers and Dens so during office hours, students feel comfortable with the blend of visibility and confidentiality.
2. Utilize the exterior walls of the Camper to create adjacent "dens" to offer touchdown seating.
3. Provide storage nearby for students' personal belongings.





** Dealer responsible for all options, finishes and power specifications.*

*Contact svaldes@steelcase.com to send over CET files or thought starters.