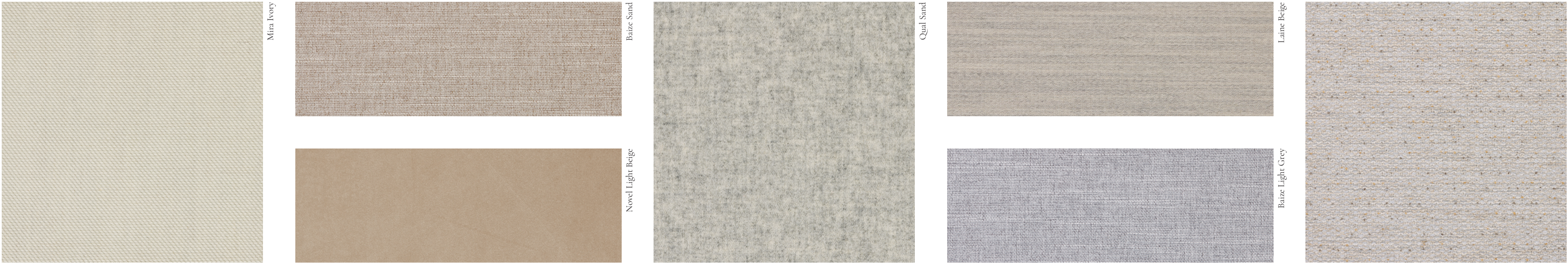


Seeking silence



With its elegant simplicity, Seeking silence is characterised by light earthy tones, transparency and a beautiful natural quality. A mood that invites you to enjoy tranquillity and contemplation. The materials exude lightness and Scandinavian purity, but feature small nuanced contrasts and materials that add simplicity and authenticity to the appearance. Based on natural materials like wood, soft, natural wool and bouclé fabrics with a soft and inviting structure, this design universe is understated yet luxurious, and is designed to create a light and serene oasis.

Not representative of the Steelcase x Bolia product offering.



Calming light



Laine Beige



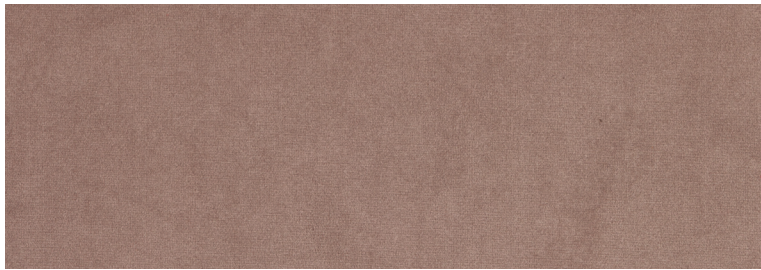
Quattro Nougat



Qual Sand



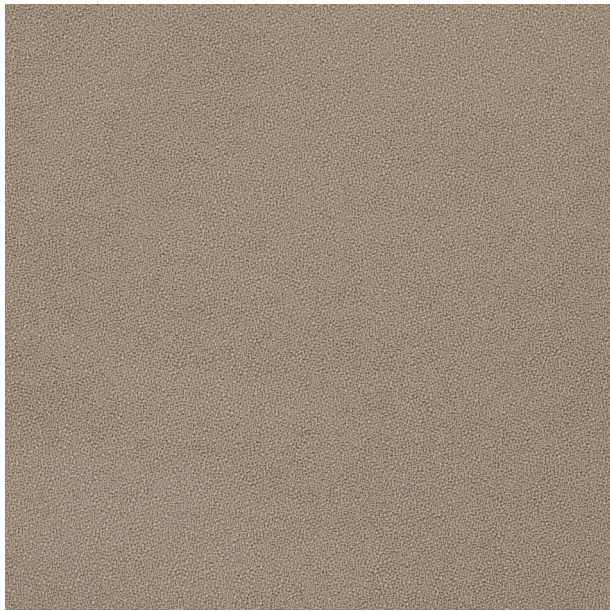
Baize Sand



Novel Beige



London Grey Brown



Gaja CaC Light Brown

Calming light explores a soothing mood that combines light tones with darker and warmer types of wood. The mood is inspired by the Scandinavian nature and the capriciousness of the seasons, and Calming light is designed to enable you to slow down and seek tranquillity in a luxurious and beautiful backdrop. The mood is composed of calm, light colours and upholstery fabrics like wool and sustainable polyester. A mood with a hint of inspiration taken from the hazy summer heat and small flashes of light glinting on the horizon.

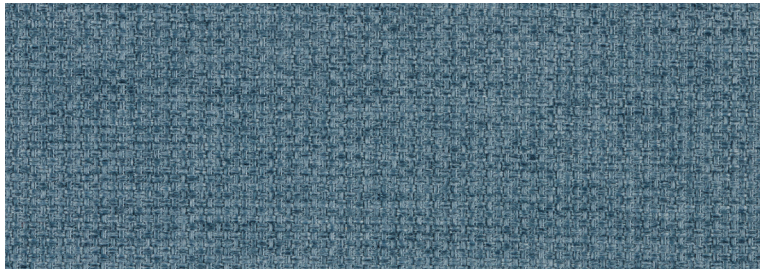
Not representative of the Steelcase x Bolia product offering.



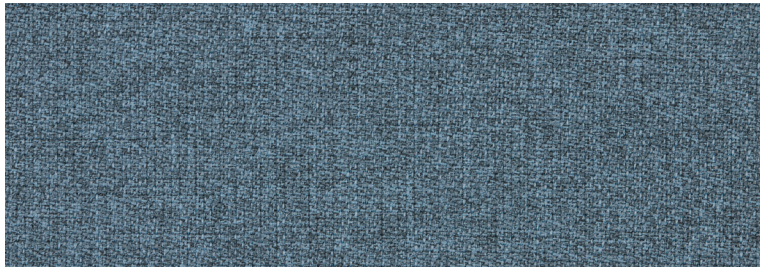
Quiet breeze



Qual Light Grey Melange



London Light Blue



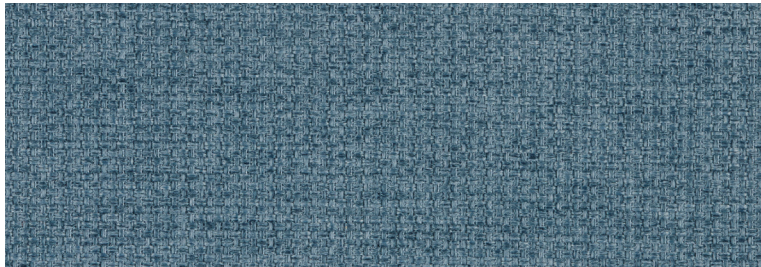
Step Melange Light Blue Green



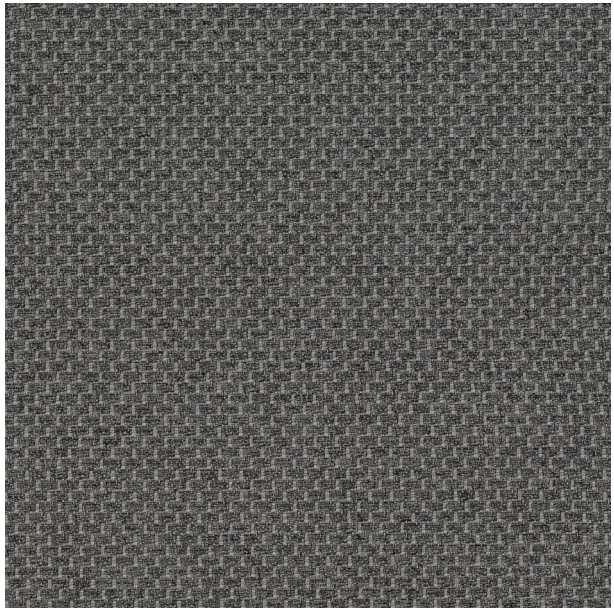
Qual Stone Grey



Novel Blue



London Blue



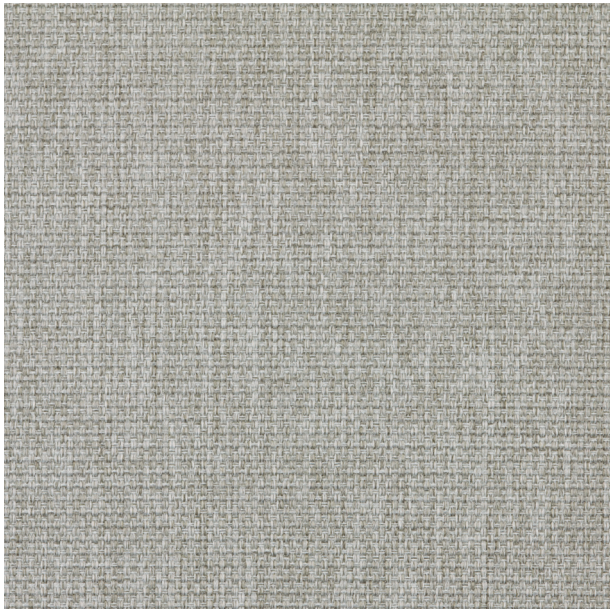
Bergo Grey

The mood, Quiet breeze, is inspired by the beautiful Scandinavian landscape and especially the beauty of the sea as it sweeps along the almost endless stretches of coastline. The universe is rooted in a slightly cooler and bluish colour scale, with the expression influenced by sand, water, the beach and the sea. The mood invites reflection and recharging – precisely the same feeling as when you're on the beach, when beautiful, wild waves are crashing onto the beach in a fresh sea breeze. Based on natural wool fabrics, crystal glass and soft corduroy, you can create your own natural refuge, even if you're miles away from the sea.

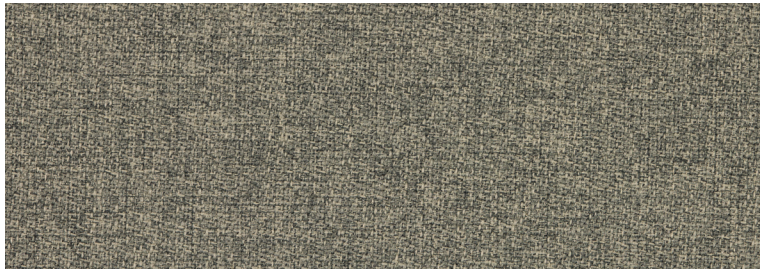
Not representative of the Steelcase x Bolia product offering.



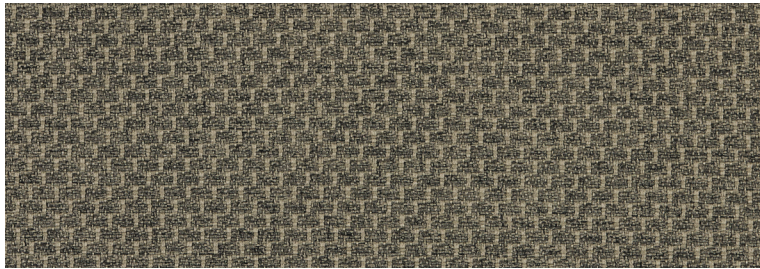
Natural tranquillity



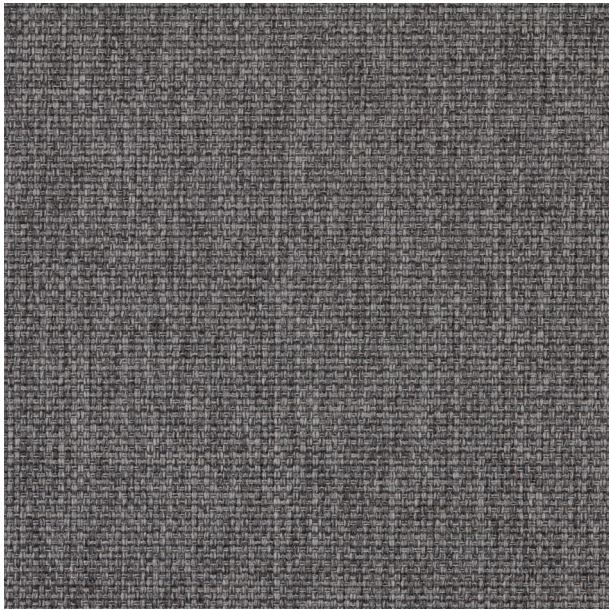
London Dust Green



Steep melange Beige



Bergo Beige



London Multi Grey



Novel Green



Novel Light Grey



Qual Army Melange

Deep-rooted in Scandinavian history, Natural tranquillity is a mood inspired by the forest floor, the fluttering leaves of the trees and the natural tranquillity that automatically materialises when you are at one with nature. The greenish colour palette is anchored in the randomness of Nordic nature, which seems extremely harsh yet wonderfully effortless at the same time.

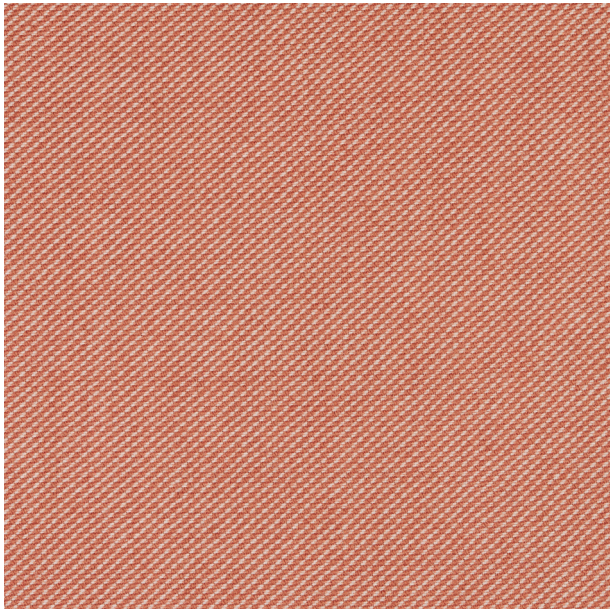
Natural tranquillity invites nature's colours and shapes inside, offering a natural oasis that allows you to rediscover and recreate the tranquillity of nature inside. The materials are playful, offering fabrics in corduroy, sustainable options and exclusive bouclé fabrics. The mood is formed by natural materials such as solid wood, durable porcelain and vibrant marble. All showcased in a beautiful replication to invite the tranquillity of Scandinavian nature inside.

Not representative of the Steelcase x Bolia product offering.

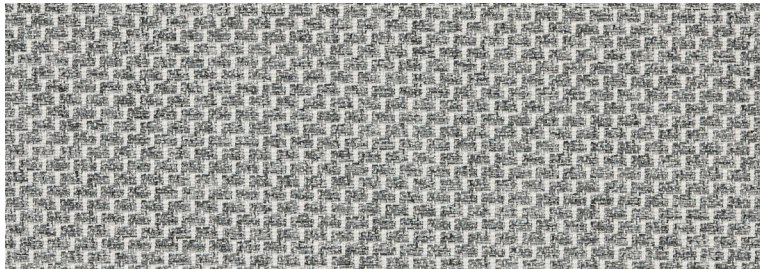
Bolia.com



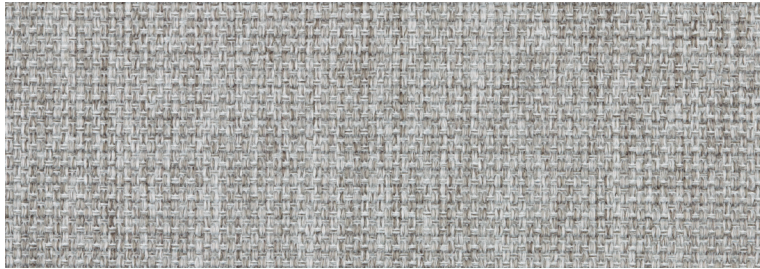
Liberated creativity



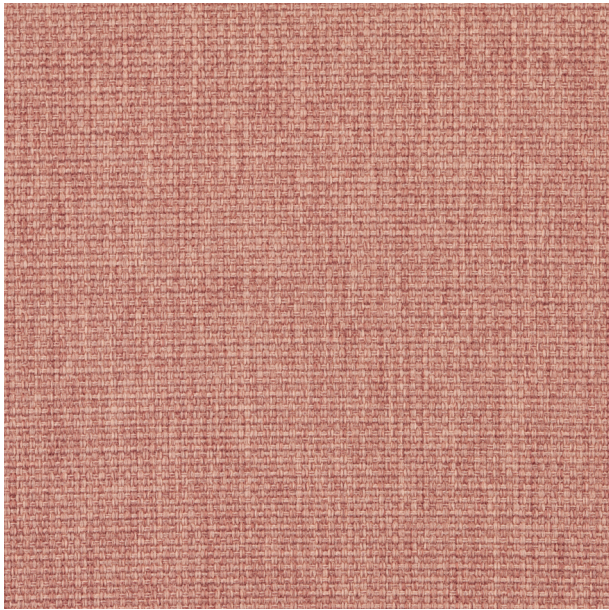
Mira Terra



Bergo Light Grey



London Light Grey



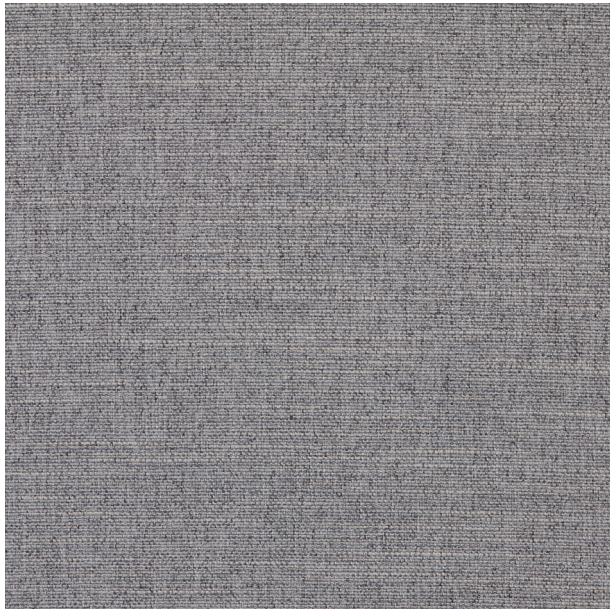
London Rosa



Qual Light Grey Melange



Memory Light Grey



Baize Grey

Liberated creativity expresses a more adventurous and playful mood. A dynamic and creative design universe where splashes of colour, bold material combinations and colourful compositions form the framework.

Featuring surfaces such as exclusive velour, soft corduroy and natural leather combined with elegant materials such as high gloss steel and solid wood, the mood is both stylish and creative at the same time.

Not representative of the Steelcase x Bolia product offering.



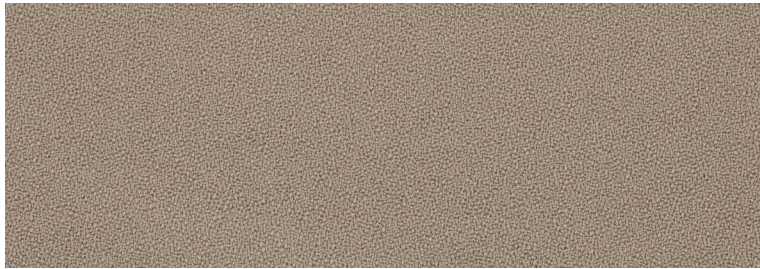
Continental elegance



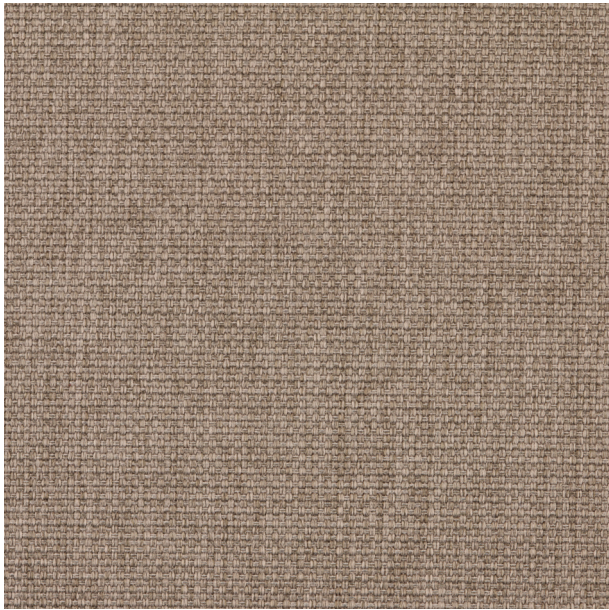
Baize Sand



Novel Beige



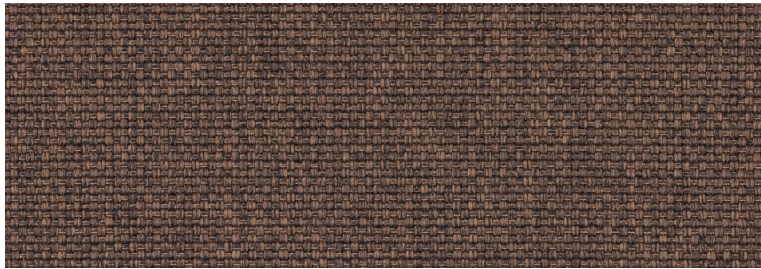
Gaja CzC Light Brown



London Grey Brown



Gaja CzC Dark Brown



London Brown



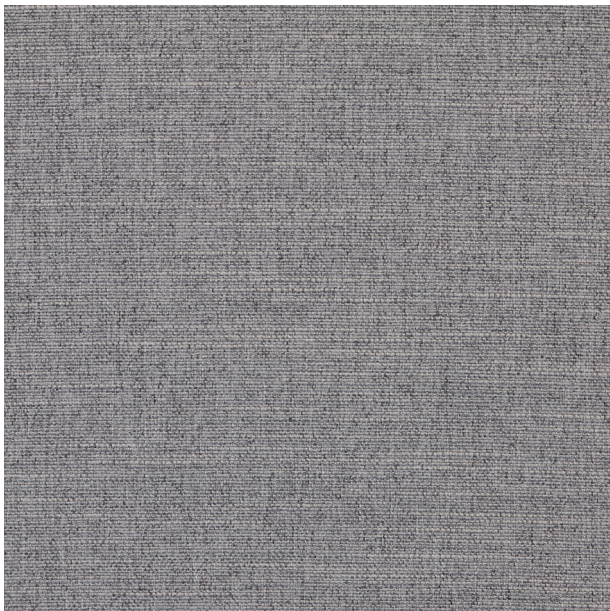
Memory Light Brown

Based on wood craftsmanship, a natural colour palette and the capriciousness of the changing seasons, Continental elegance combines lightness and elegance with a deeper and heavier universe. A mood that explores contrasts and materials by drawing inspiration from nature's warm tones; combining soft, natural surfaces like traceable leather and soft velour with solid wood and fine, light surfaces such as porcelain and crystal glass. A mood designed to bring nature's tranquillity inside the home, lobby, restaurant and any other space.

Not representative of the Steelcase x Bolia product offering.



Dimmed decadence



Baize Grey



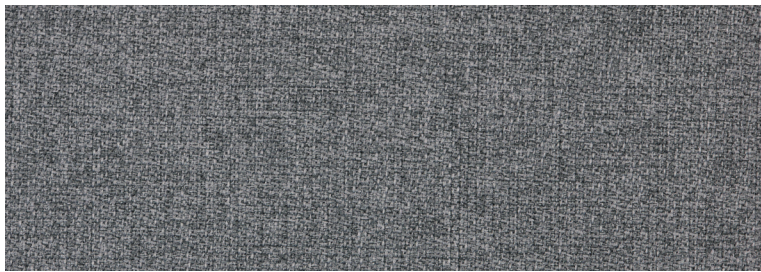
Quattro Cognac



Novel Camel



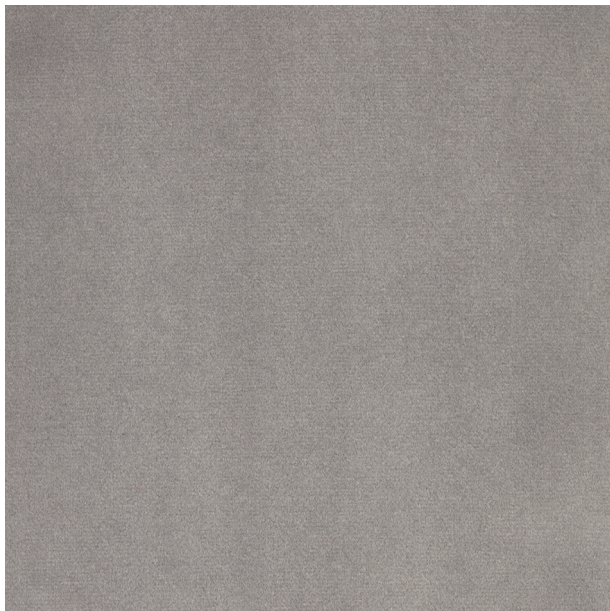
Laine Grey



Step Melange Light Grey



Memory Grey



Novel Light Grey

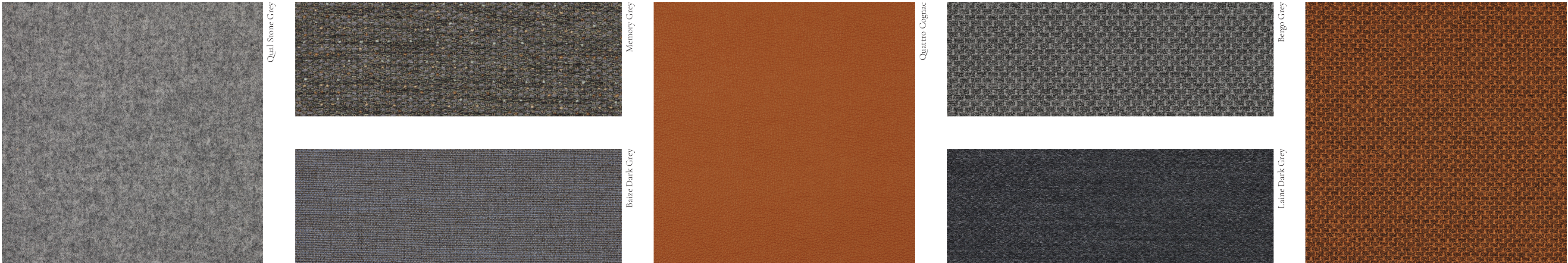
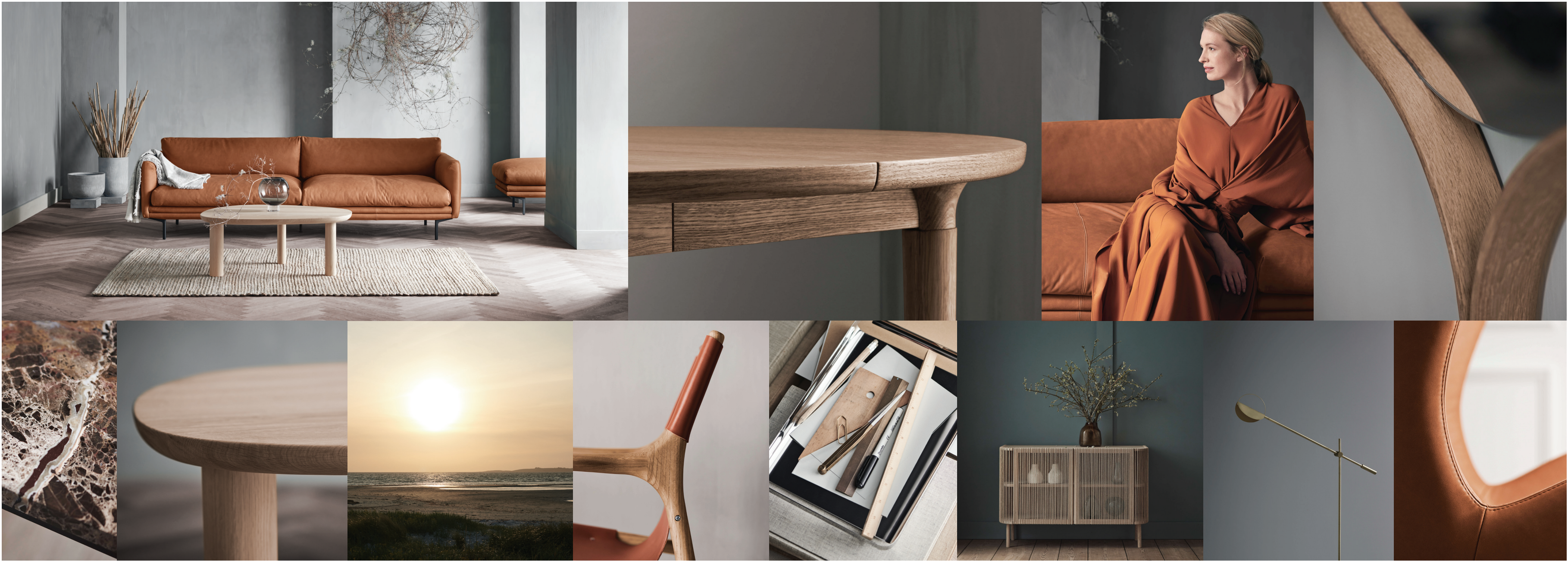
The curated mood Dimmed decadence is inspired by the atmosphere you encounter in large hotel lobbies, where velvety, heavy curtains create an utterly unique atmosphere.

The focus is on handcrafted details, draped effects and decadent surfaces and textures, with elegant materials such as soft velour and natural cotton. A decadent and luxurious mood that is rich in contrasts, and which is designed to combine different expressions and fuse them in a nature-inspired autumnal palette, where muted, natural colours create the luxurious backdrop. As its name suggests, Dimmed decadence is created to add a luxurious slant to your interior design.

Not representative of the Steelcase x Bolia product offering.



Warm sanctuary



In Warm sanctuary we've been playing with Scandinavia's seasons and the stunning sunrises and sunsets. That's why the mood is based on the darker and more dynamic autumn season, beautifully combined with light, natural materials and handmade details in the wood craftsmanship.

Materials such as traceable leather, wool and braided fronts provide the material inspiration and mood, bringing a natural warmth into the home that creates optimism and tranquillity at the same time. The inspiration is nature's capriciousness, which, together with curved features and precise details, are common denominators of this mood.

Not representative of the Steelcase x Bolia product offering.

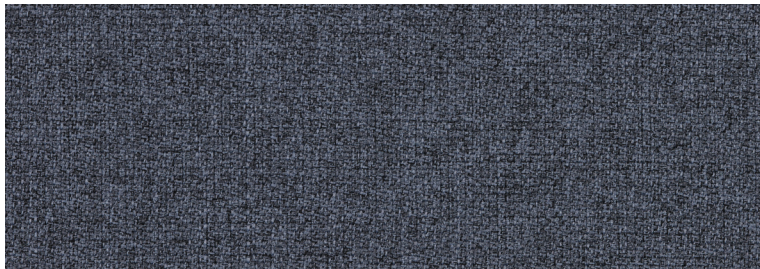
Bolia.com



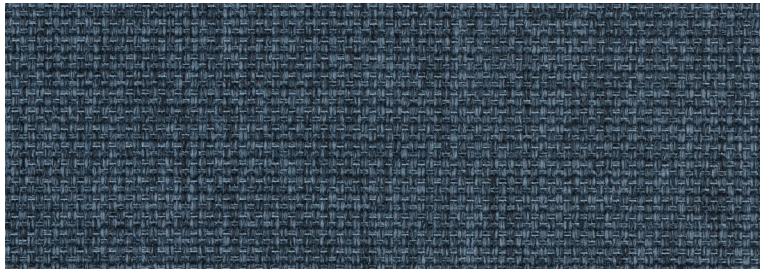
Mindful serenity



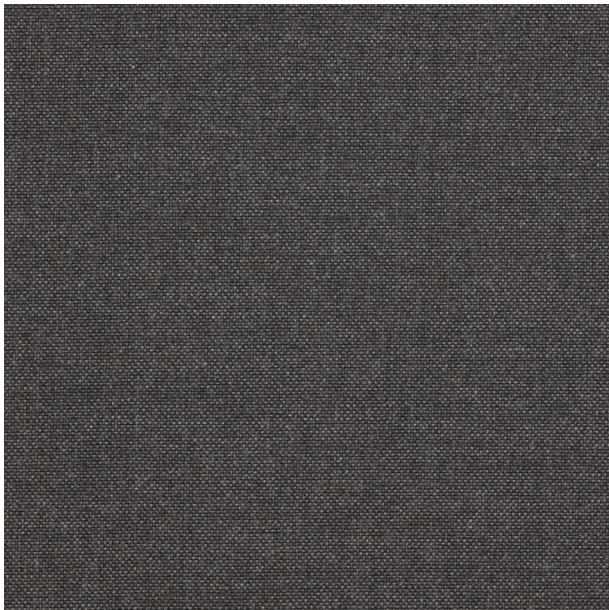
Qual Light Grey Melange



Step Melange Grey Blue



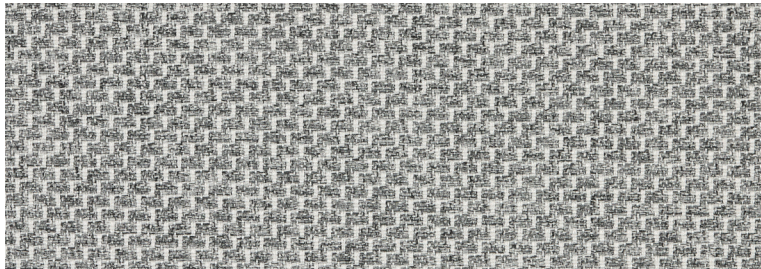
London Dust Blue



Leaf Dark Grey



London Light Grey



Bergo Light Grey



Leaf Light Grey

Inspired by nature and the four seasons, Mindful serenity highlights the nature outside and is designed to harmoniously incorporate the colours of the sea, sand and forest floor into the home or onto the patio. Soft surfaces and inviting design language take centre stage, with comfort, aesthetics and function effortlessly interwoven in beautiful, timeless designs. Materials such as natural wood and upholstery fabrics developed for outdoor use form the foundation of Mindful serenity, with the desire to integrate the tranquillity and slowness from nature into your interior and exterior home decor. A calm universe where glass, practical solutions, soft fabrics and durable materials characterise the appearance and create tranquillity in a busy everyday life.

Not representative of the Steelcase x Bolia product offering.