

Accord™ Installation Guide

AMERICAS 2024

Guidelines for installing your
new Accord™ combination board

English

3	Safety Requirements
4	Handling + Storing of Panels
5	Required Materials + Equipment
6	Installation
11	Warranty

Safety Requirements

Accord™ - Wall Mounted Combination Board, Non-Seismic Applications

The building's Engineer of Record must be consulted to determine if there are any seismic requirements.

**WARNING**

**CRUSH HAZARD**
Panels are heavy. Falling or dropped panels can cause serious injury. Follow all safety instructions.

SAFETY INSTRUCTIONS

- Only install with trained professionals.
- Use at least 2 people to lift, install or remove panels.
- Read all assembly directions on installation template before beginning installation.
- Wear safety boots with protection for toes and top of foot (metatarsal protection).
- Panels and mounting hardware for use on drywall only.
- Contact Polyvision: info@polyvision.com or visit our website polyvision.com

NOTICE
Building owner or designated agent is responsible to verify the installation is compliant to local codes and regulations. Polyvision is not liable for installation on surfaces other than drywall.

Minimum Required Wall Construction

Drywall with metal studs:

- Must be at least 25 ga. (0.018" or .5 mm thick) 33 ksi steel studs 38 mm x 89 mm (1.5" x 3.5")
- Studs on maximum 610 mm (24") centers
- Must be at least 16 mm (5/8") thick Type gypsum drywall for the US or 12 mm (1/2") for EU
- 32 mm (#6 x 1-1/4") drywall screws on 305 mm (12") centers

Drywall with wooden studs:

- Stud grade SPF, DF-L or Hem-Fir 38 mm x 89 mm (1.5" x 3.5")
- Studs on 610 mm (24") centers
- Must be at least 16 mm (5/8") thick Type gypsum drywall for the US or 12 mm (1/2") for EU
- 32 mm (#6 x 1-1/4") drywall screws on 305 mm (12") centers

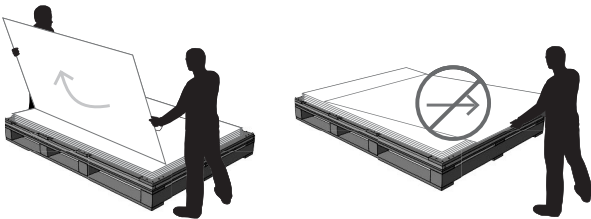
Verify Wall Construction

CAUTION! Adequate wall construction is required to support the weight of the board. Minimum wall construction must be capable of supporting weight amounts listed in Table 1 on page 5.

Handling + Storing of Panels

Handling

- Keep panels in the original package until installation. When panels are shipped, they are protected by craft paper or a self-adhesive transparent polyethylene film.
- Handle with care to prevent damage.
- Never slide panels off the stack during handling. Panels should always be lifted and moved in a vertical position.
- Never place a panel in a vertical position on the floor. This is to prevent damage to the edges.
- Prevent dirt from settling on and between panels to avoid surface damage, scratches or defects.
- Follow all safety instructions regarding personal protection when processing the panels.
- Protect panel surface against sawdust and sparks (metal particles).



Storing

- Keep panels dry and free of debris.
- Store panels inside temps 50-90 °F (10-32 °C).
- Any panels stored outside should be protected from inclement weather conditions.
- Place panels on hard, flat surfaces that are not subject to standing water.
- Panels should be stacked no more than three high.
- Panels should never be stored vertically or in such a way that the corners are vulnerable to damage.

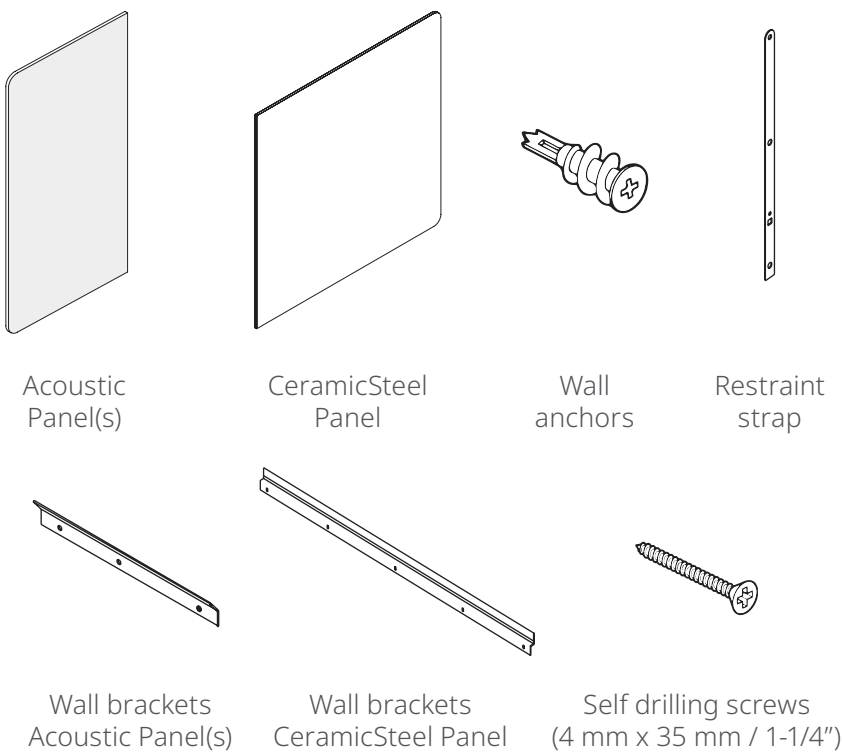
If you have a problem, question, or a request, call your local fabricator, your regional sales manager or Polyvision Customer Service. Polyvision's global customer service team can be contacted on polyvision.com

Required Equipment

- Drill
 - #2 Bit
 - Glass suction cup lifters (2)
- Pencil
 - Level
 - 2 or 3-step ladder
- Rubber mallet
 - Tape measure

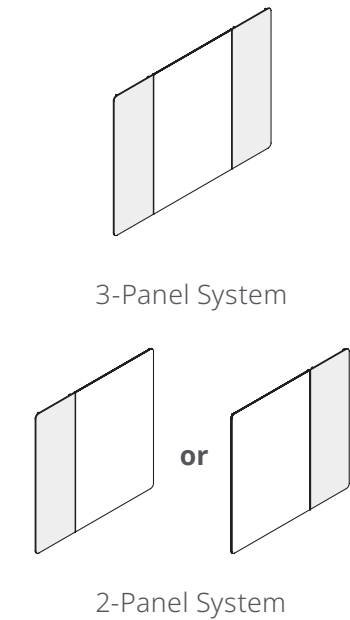
Content for installation

Note: Parts are not drawn to scale.



Product Configurations

Note: CeramicSteel panel sizes vary in height and width.



Type	Height	System Width	Panel System	Brackets	Screws/Anchors	Weight
Accord™ Horizontal	47"	70"	2 panels	4	19	48,1 lb
		94"	2 panels	4	23	71,7 lb
		119"	2 panels	4	27	93,0 lb
		94"	3 panels	6	26	52,7 lb
		119"	3 panels	6	30	76,3 lb
		142"	3 panels	6	34	97,7 lb
Accord™ Vertical	72"	70"	2 panels	6	28	74,3 lb
		94"	3 panels	9	38	81,6 lb
	95"	70"	2 panels	6	28	97,9 lb
		94"	3 panels	9	38	107,4 lb

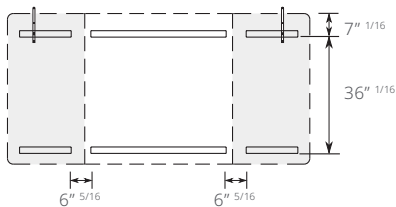
Installation

- Verify that the required equipment is available and material provided is accurate.
- Provide adequate protection for finished floor surfaces.
- All Accord™ installations should be carried out by two or more individuals.

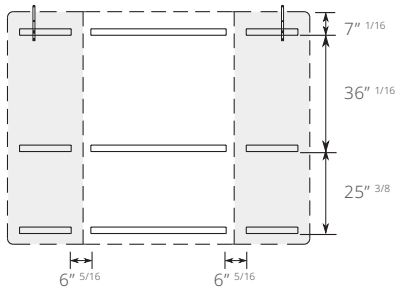
Step 1: Mount brackets on wall

- Level brackets and mark holes onto wall
- Install wall anchors in all hole locations that are not over a stud. Anchor may not be needed for stud.

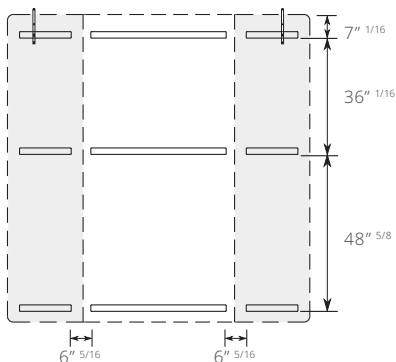
Accord™ horizontal 1185



Accord™ vertical 1830

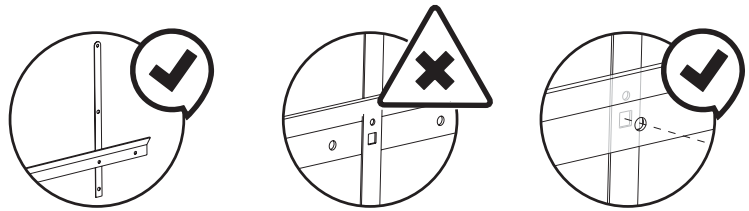


Accord™ vertical 2420



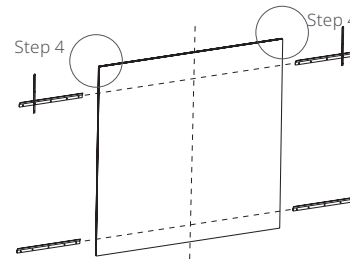
Step 2: Mount brackets

- Make sure all brackets are aligned and flush with the wall, use spacers if necessary.
- Install Restraint straps on the top brackets as shown in step 1
- Restraint strap required for each acoustic panel.



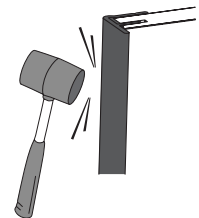
Step 3: Mount Ceramic panel

Note: 2-panel system has rounded corners depending on the configuration.



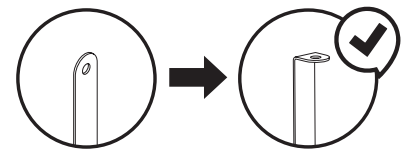
Step 4: Check the bumpers

Bumper need to be flush & fully inserted. Secure with rubber mallet
Note: 3-panel system has bumpers on left and right sides.

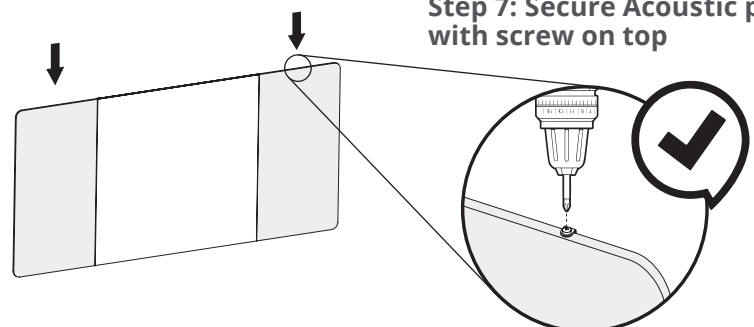


Step 5: Mount Acoustic panel(s) Step 6: Fold top of Restraint strap

Always check to insure both top and bottom panel brackets are resting on the wall.
Note: results may vary dependent on configuration.



Step 7: Secure Acoustic panel with screw on top



Collaborative Warranty

CeramicSteel Surface: Forever Warranty

Polyvision warrants that all porcelain-enameled surfaces and/or products made with CeramicSteel will retain its writing and erasing qualities and maintain its gloss variance and color consistency for the life of the building or for as long as the product is in use, whichever comes first.

CeramicSteel Panel & Mobile Construction: 10 year Limited Warranty

Polyvision warrants that our panels, our static and mobile writing and communication board products under normal atmospheric conditions and when sealed from moisture, will not delaminate from the substrate or warp for a period of 10 years. These products are warranted under the conditional terms of interior use.

Accessories: 2 year Limited Warranty

Polyvision warrants that our accessories, when used under normal conditions, will perform as intended for a period of 2 years. Consumables like markers and chalk sticks are not covered by the Accessories warranty.

Other Writing and Panel Materials: 2 year Limited Warranty

Polyvision warrants that our glass, tackable, textile and sound-absorbing products, including but not limited to Tac and Soft when used under normal conditions (interior use only) will perform as intended for a period of 2 years.

Complaints: Process

Should any failure to conform to this warranty become apparent, then, upon written notice from the customer, Polyvision, at its option, will correct such nonconformity by repair or replacement. Correction in the manner provided above shall constitute a fulfillment of all liabilities of Polyvision with respect to the quality of the CeramicSteel. The warranty is applicable only under normal interior usage and maintenance and does not cover defects caused by improper handling, vandalism or abuse, or arising from failure to follow Polyvision's instructions and recommendations for maintenance. The warranty is voided if any modifications are made to the products by the customer or other trades with or without Polyvision's written consent or prior knowledge. The warranty does not include the cost of removal or reinstallation. This warranty is effective as of August 15, 2022, and supersedes the terms and conditions of all prior surface warranties issued to the customer by Polyvision.

This limited warranty is the sole remedy for product defects and no other express or implied warranty is provided, including but not limited to any implied warranties of merchantability or fitness for a particular purpose. Polyvision shall not be liable for consequential or incidental damages arising from any product defect.

Polyvision Americas

4301 N Wood Drive
Okmulgee, OK 74447 USA

T 1 888 325 6351
E info@polyvision.com

Polyvision Europe

Zuiderring 56
3600 Genk, Belgium

T +32 89 32 31 30
E EMEAsupport@polyvision.com

Polyvision Asia-Pacific

15th Floor, Kinwick Centre
32 Hollywood Road, Central District
Hong Kong

T +852 2520 0160
E APACsupport@polyvision.com

SURFACEMATTERS™

©2024 Polyvision Corporation. All rights reserved. Trademarks used herein are the property of Polyvision Corporation or of their respective owner. Polyvision Corporation reserves the right to make changes in product design, construction or detail, and to discontinue any product or material without notice.

polyvision.com



04-25-2024 AMERICAS