

# FUSION

Terracotta CL80

Materials are displayed for reference and may vary by screen and print quality. Please refer to a physical sample for actual color and detail

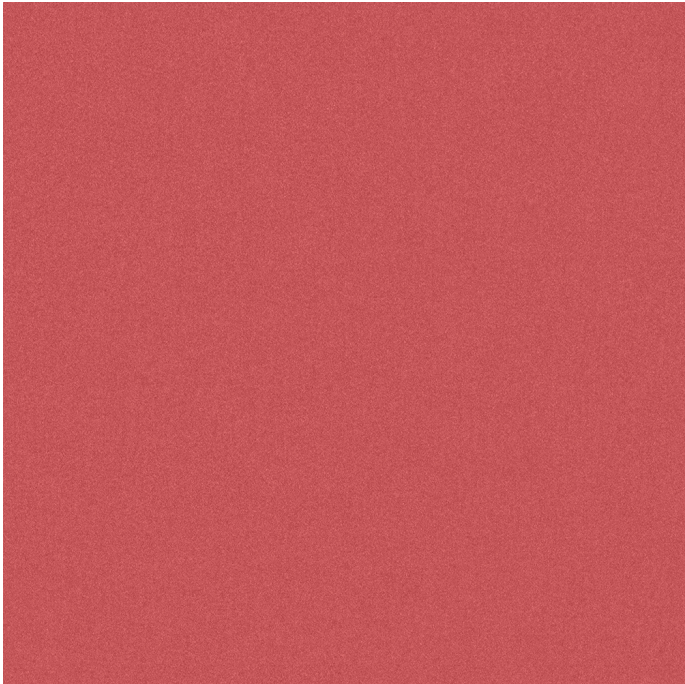
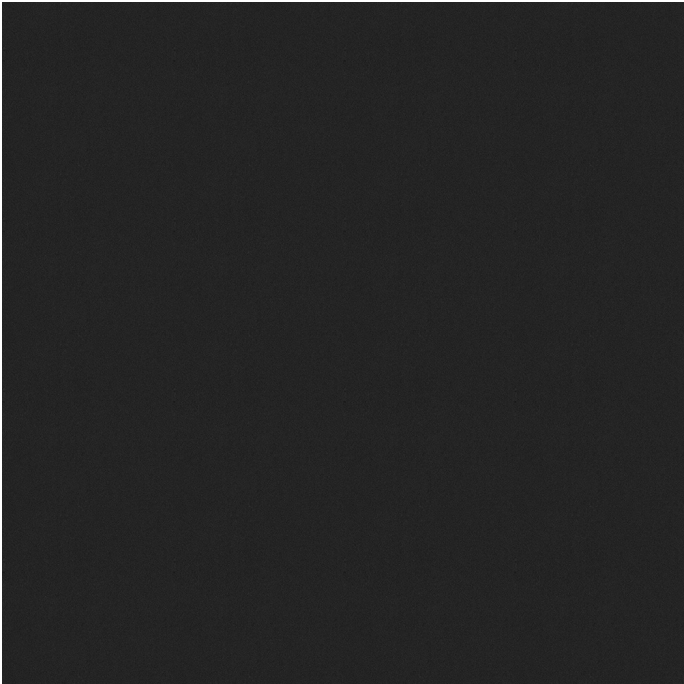


Image Shown: Warp Vertical



Repeat



Copper CL81



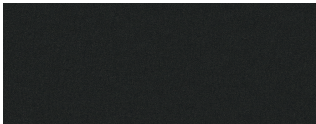
Sage CL82



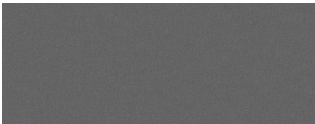
Blue Ink CL83



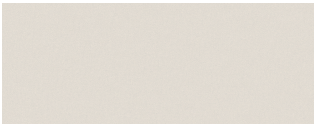
Blue Steel CL84



Caviar CL60




Graphite CL62



Steam CL64

OVERVIEW

|                     |   |
|---------------------|---|
| Material Type       | Polyurethane  |
| Price               | Coalesce Price Group 11   |
| Offering            | Standard Surfaces   |
| Brand               | Steelcase   |
| Content             | 100% Polyurethane   |
| Application         | Seating Upholstery  |
| Global Availability | Americas  |
| Cleaning Code       | WS  |
| Design              | Solid, Texture  |
| ACT                 |  |

SPECS

|                 |  |
|-----------------|--|
| Fire Retardancy | Please check the COM database for CAL 133 results on this fabric |
|-----------------|--|

CHARACTERISTICS

|                   |                         |
|-------------------|-------------------------|
| Fabric Backing    | None                    |
| Topical Finish    | None                    |
| Weight            | 14.6 oz per linear yard |
| Width             | 54 Inches               |
| Country of Origin | Japan                   |
| Warranty          | Warrantied By Supplier  |

**FULL AVAILABILITY**

---

FLEX FREESTANDING SCREENS (V)

SARTO SCREENS (H)

SPFURN (H,V)

SPSEATING (H,V)