

Steelcase

HEXA

Steam CL74

Materials are displayed for reference and may vary by screen and print quality. Please refer to a physical sample for actual color and detail



Repeat



Rose Quartz CL71



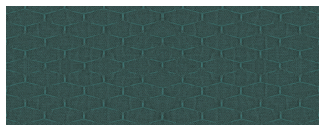
Lagoon CL72



Sea Salt CL73



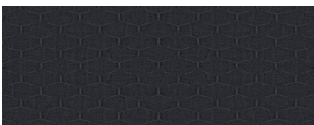
Ocean CL75



Sage CL76



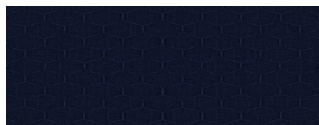
Saffron CL70



Dark Grey CL50



Light Grey CL51




Blue CL52



Yellow CL55

OVERVIEW

Material Type	Woven
Price	Coalesse Price Group 10
Offering	Select Surfaces
Brand	Steelcase
Content	33% Polyester, 66% Acrylic
Application	Seating Upholstery
Global Availability	Americas
Cleaning Code	WS
Design	Solid
ACT	

SPECS

Abrasion Wyzenbeek	115,000 Double Rubs
Dry Crocking	Class 5
Wet Crocking	Class 5
Colorfastness to Light	Class 5
Brush Pill	Class 4

CHARACTERISTICS

Fabric Backing	None
Topical Finish	None
Horizontal Repeat	0.95
Vertical Repeat	1.63
Weight	35.3 oz per linear yard
Width	55 Inches
Country of Origin	Canada
Warranty	Warrantied By Supplier

FULL AVAILABILITY

435 STEELCASE SERIES 1 AIR (H,V)	MARIEN152 LOUNGE (H,V)
BIX BENCH (H,V)	MARIEN152 STOOLS (H,V)
BIX CORNER SECTIONS (H,V)	RIPPLE (H,V)
BIX STRAIGHT SECTIONS (H,V)	SISTEMA LOUNGE OTTOMANS AND ACCESSORIES (H,V)
DAVOS (H,V)	SWITCH (H,V)
EMU RE-TROUVE INDOOR CUSHIONS (H,V)	SWITCH GUEST (H,V)
EMU ROUND INDOOR CUSHIONS (H,V)	SWITCH STOOLS (H,V)
ENEA ALTZO943 (H,V)	SW_1 (H,V)
ENEA BARSTOOLS (H,V)	SW_1 CONFERENCE (H,V)
ENEA CAFE STOOLS (UPH SEAT ONLY) (H,V)	THOUGHTFUL (H,V)
ENEA CAFE STOOLS UPH SEAT/WOOD BACK (H,V)	TOGETHER (H,V)
ENEA CAFE STOOL UPH SEAT & BACK (H,V)	
ENEA LOTTUS (H,V)	
ENEA STACKER (H,V)	
ENEA STACKER/BARSTOOLS (SEAT ONLY) (H,V)	
ENEA WOOD CAFE STOOLS (H,V)	
EVANEAU (H,V)	
FLW GALESBURG (H,V)	
FLW ROCKFORD (H,V)	
FLW SEATING (H,V)	
KATHRYN GUEST CHAIR (H,V)	
LOX (SEAT & BACK) (H,V)	
LOX (SEAT) (H,V)	
MARIEN152 CONFERENCE (H,V)	
MARIEN152 GUEST (H,V)	