

Steelcase

# Ascent

Sea Salt TE10

EMEA TE10

Materials are displayed for reference and may vary by screen and print quality. Please refer to a physical sample for actual color and detail

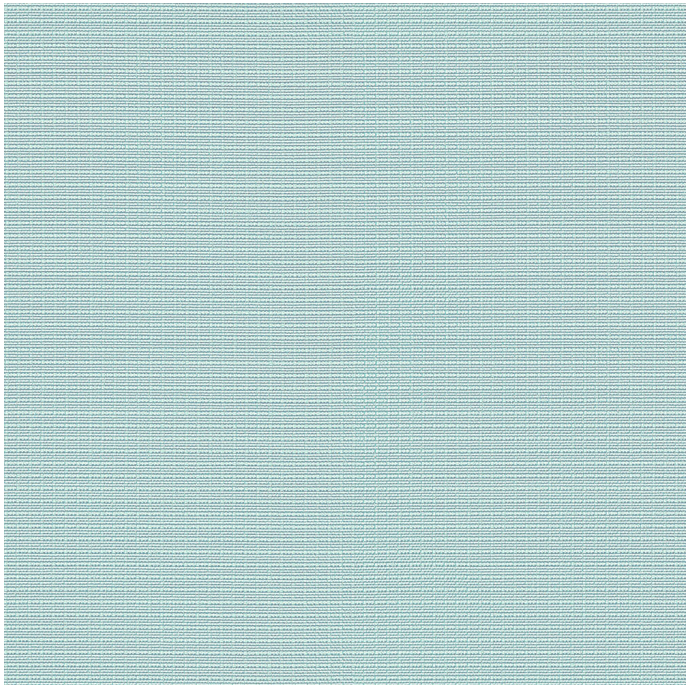
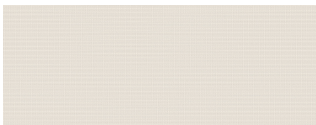


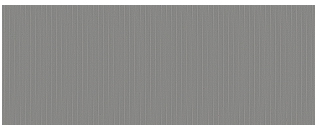
Image Shown: Warp Vertical



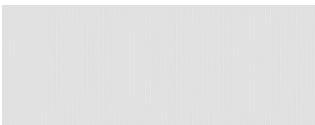
Light Peacock TE09



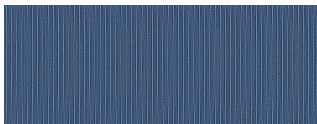
Sand TE08



Sterling Dark TE03



Arctic White TE04



Indigo TE05







Olivine TE06



Rose Quartz TE07

OVERVIEW

|                     |   |
|---------------------|---|
| Material Type       | Woven   |
| Price               | Price Group A   |
| Offering            | Standard Surfaces   |
| Brand               | Steelcase   |
| Content             | 100% Polyester  |
| Application         | Vertical Surface  |
| Global Availability | Americas, Europe, Middle East, Africa   |
| Cleaning Code       | W   |
| Design              | Texture   |
| Sustainability      | Does Not Contain PVC, Does Not Contain Flame Retardants, Does Not Contain Heavy Metals  |
| ACT                 |     |

SPECS

|                        |           |
|------------------------|-----------|
| Abrasion Taber         | 100       |
| Dry Crocking           | Class 4   |
| Wet Crocking           | Class 4   |
| Colorfastness to Light | Class 4   |
| Brush Pill             | Class 3.5 |

CHARACTERISTICS

|                   |                        |
|-------------------|------------------------|
| Fabric Backing    | Polyurethane Coating   |
| Topical Finish    | None                   |
| Weight            | 4.6 oz per linear yard |
| Width             | 59 Inches              |
| Country of Origin | China                  |
| Warranty          | 5 Year                 |

**FULL AVAILABILITY**

---

WORK TENTS-BOUNDARY TENT (H,V)

WORK TENTS-POD TENT (H,V)

WORK TENTS-TABLE TENT (H,V)