

FUSION

Sage CL82

EMEA CL82

Materials are displayed for reference and may vary by screen and print quality. Please refer to a physical sample for actual color and detail

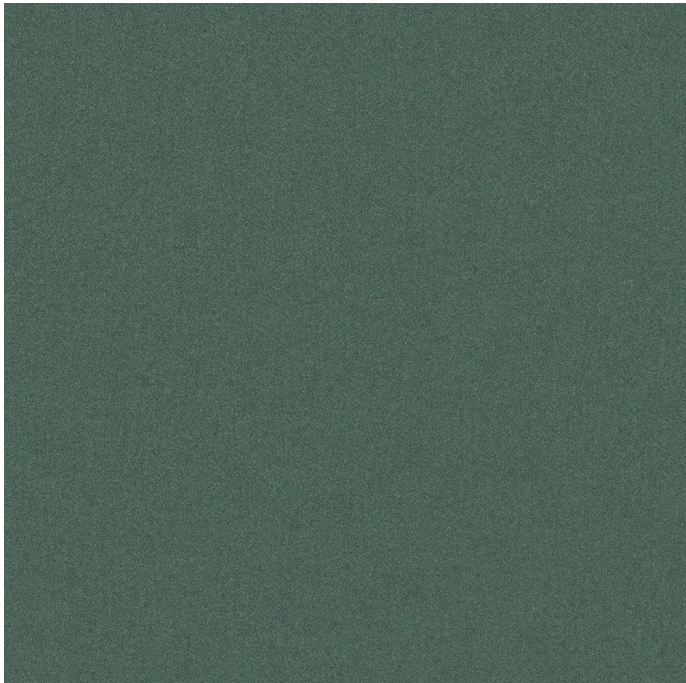
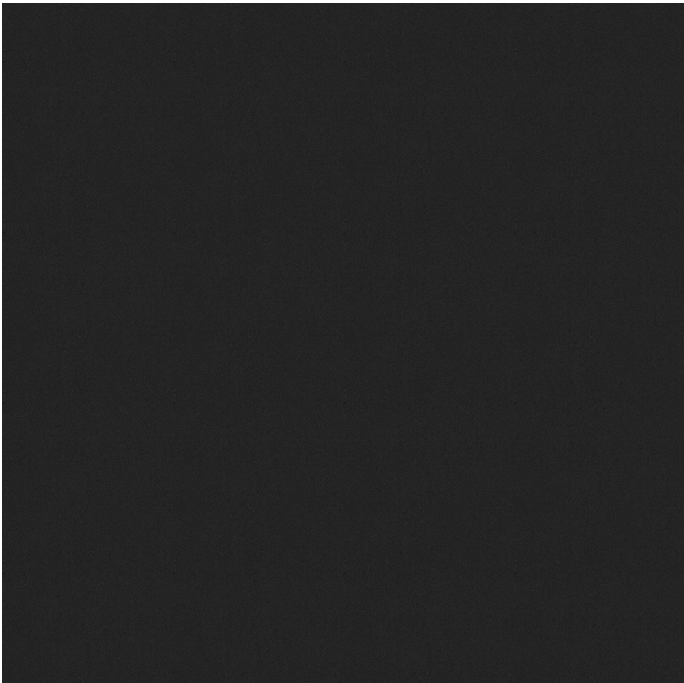
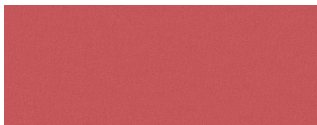


Image Shown: Warp Vertical



Repeat



Terracotta CL80



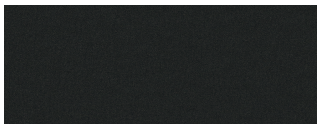
Copper CL81



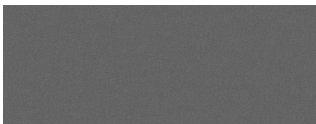
Blue Ink CL83



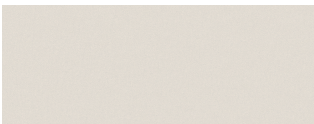
Blue Steel CL84



Caviar CL60




Graphite CL62



Steam CL64

OVERVIEW

Material Type	Polyurethane
Price	Coalesse Price Group 11
Offering	Standard Surfaces
Brand	Steelcase
Content	100% Polyurethane
Application	Seating Upholstery
Global Availability	Americas, Europe, Middle East, Africa
Cleaning Code	WS
Design	Solid, Texture
ACT	

SPECS

Fire Retardancy	Please check the COM database for CAL 133 results on this fabric
-----------------	--

CHARACTERISTICS

Fabric Backing	None
Topical Finish	None
Weight	14.6 oz per linear yard
Width	54 Inches
Country of Origin	Japan
Warranty	Warrantied By Supplier

FULL AVAILABILITY

FLEX FREESTANDING SCREENS (V)

SARTO SCREENS (H)

SPFURN (H,V)

SPSEATING (H,V)