

Steelcase

# REPLY AIR MESH

Sable AR09

APAC AR09

Materials are displayed for reference and may vary by screen and print quality. Please refer to a physical sample for actual color and detail

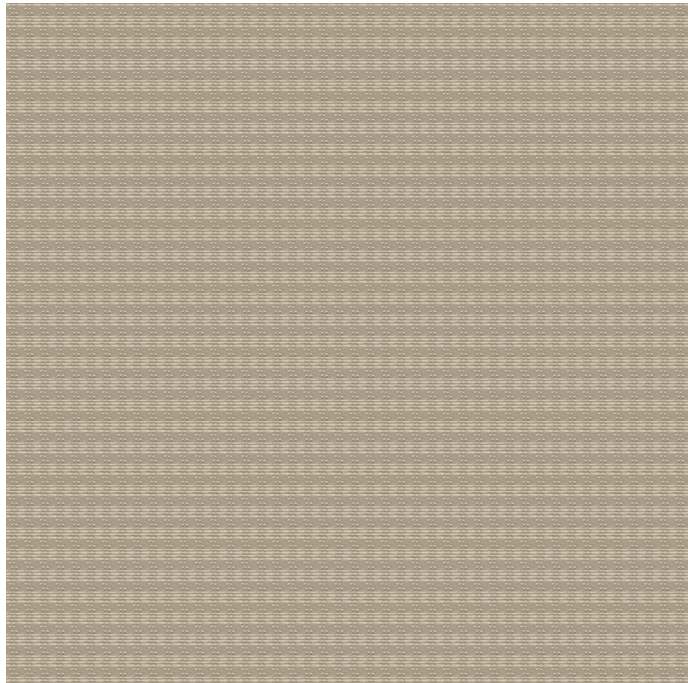
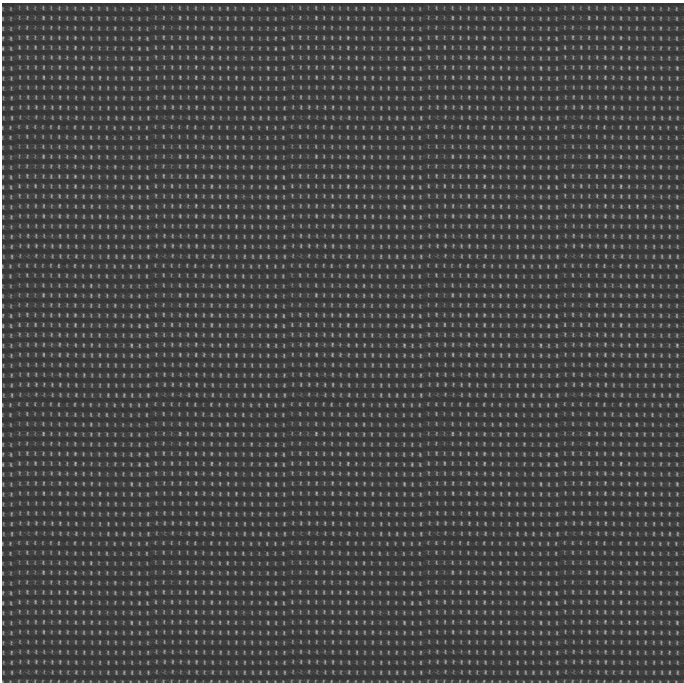


Image Shown: Warp Horizontal



Repeat



Red AR04



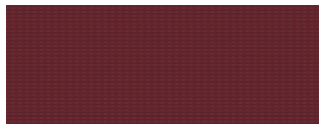
Peacock AR14



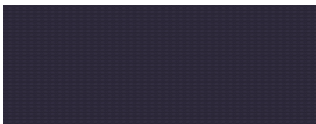
Honey AR17



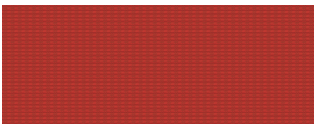
Jungle AR15



Merlot AR16



Aubergine AR13



Saffron AR19



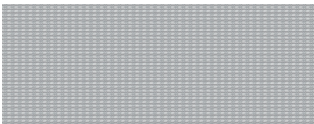
Apple Green AR06



Royal Blue AR05



Black AR02







Grey AR01



Lagoon AR18

OVERVIEW

Material Type	Knit/Mesh
Price	Mesh
Offering	Select Surfaces
Brand	Steelcase
Content	64% Polyester, 36% Nylon (Polyamide)
Application	Seating Upholstery
Global Availability	Americas, Asia Pacific
Cleaning Code	WS
Design	Solid, Pattern, Texture
Sustainability	Does Not Contain PFAS
ACT	   

SPECS

Abrasion Wyzenbeek	100,000 Double Rubs
Colorfastness to Light	Class 4
Fire Retardancy	Please check the COM database for CAL 133 results on this fabric

CHARACTERISTICS

Fabric Backing	None
Topical Finish	None
Weight	16 oz per linear yard
Width	
Country of Origin	Italy
Warranty	12 Year

**FULL AVAILABILITY**

---

463 ALLY SEWN (H,V)

466 REPLY MULTI-USE SEWN (H,V)

466 REPLY MULTI-USE STD (H,V)

466 REPLY WORK (TASK) SEWN (H,V)

CRC CUSHION TOP (H,V)

FLW SEATING (H,V)

NOOI (H,V)

SIMPLE SEATING COVER W/SNAPS  
SLIPCOVER (H,V)

SIMPLE SEATING SEAT/BACK CUSH  
(H,V)

SIMPLE SEATING TEXTILES  
SLIPCOVER (H,V)

SPFURN (H,V)

SPSEATING (H,V)

TS2FILE (H,V)