

Steelcase

CONNECT 3D

Royal Blue 5014

Materials are displayed for reference and may vary by screen and print quality. Please refer to a physical sample for actual color and detail

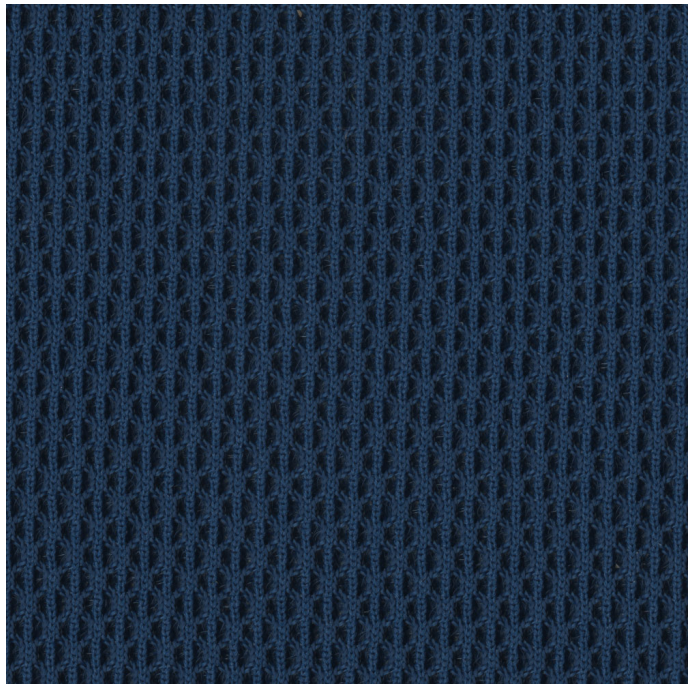
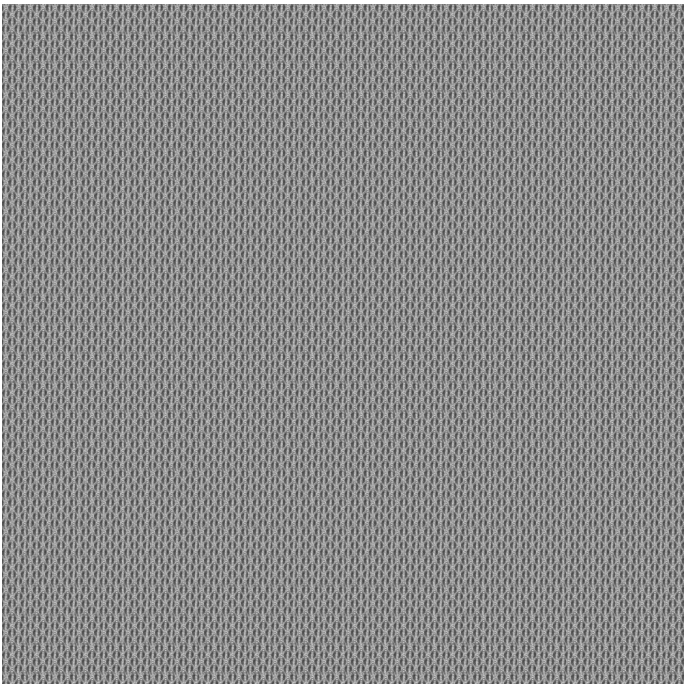
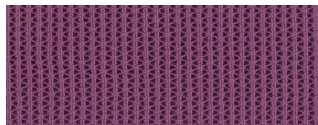


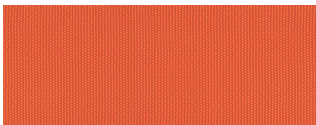
Image Shown: Warp Horizontal



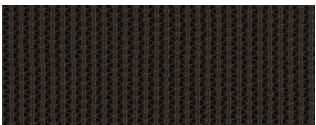
Repeat



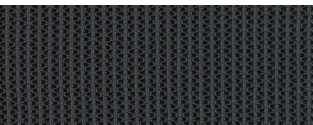
Concord 5019



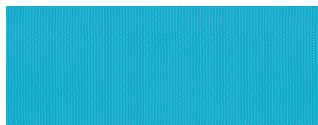
Tangerine 5017



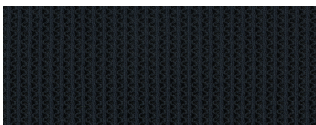
Root Beer 5028



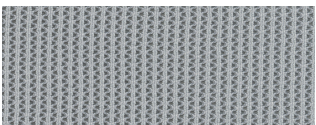
Graphite 5025



Blue Jay 5021



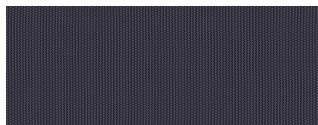
Sailor 5030



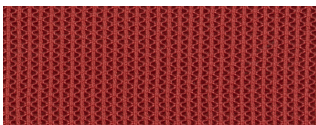
Nickel 5024



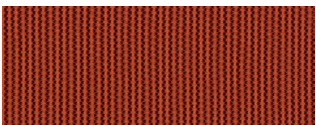
Peacock 5533



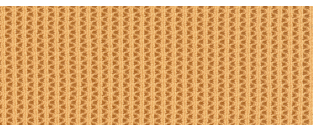
Aubergine 5532



Scarlet 5018



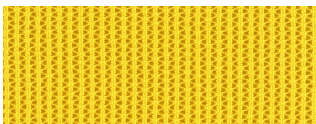
Saffron 5537



Turmeric/Honey 5016



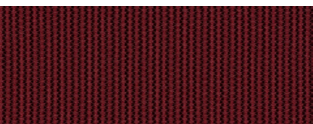
Lagoon 5536



Canary 5036

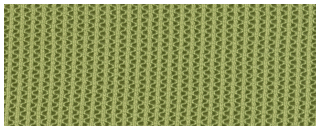


Coconut 5015

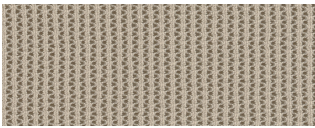


Merlot 5535

COLORWAYS



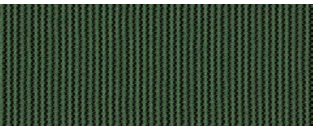
Wasabi 5023



Malt 5027




Licorice 5026



Jungle 5534

OVERVIEW

| | |
|---------------------|---|
| Material Type | Knit/Mesh |
| Price | Mesh |
| Offering | Select Surfaces |
| Brand | Steelcase |
| Content | 100% Polyester (Antimony Free Yarn)+ |
| Application | Seating Upholstery |
| Global Availability | Americas |
| Cleaning Code | WS |
| Design | Solid, Texture |
| Sustainability | Does Not Contain PFAS |
| ACT |  |

SPECS

| | |
|------------------------|-------------------------|
| Abrasion Wyzenbeek | 100,000 Double Rubs |
| Colorfastness to Light | Class 4 |
| CHARACTERISTICS | |
| Fabric Backing | None |
| Topical Finish | None |
| Horizontal Repeat | 0.17 |
| Vertical Repeat | 0.13 |
| Weight | 20.5 oz per linear yard |
| Width | 59 Inches |
| Country of Origin | United States |
| Warranty | 12 Year |

FULL AVAILABILITY

434 COBI (H,V)

434 COBI SEWN (H,V)

MEDIA:SCAPE LOUNGE (H,V)

SPFURN (H,V)

SPSEATING (H,V)