

Steelcase

# Flip: Orbit

Pluto 5F88

Materials are displayed for reference and may vary by screen and print quality. Please refer to a physical sample for actual color and detail

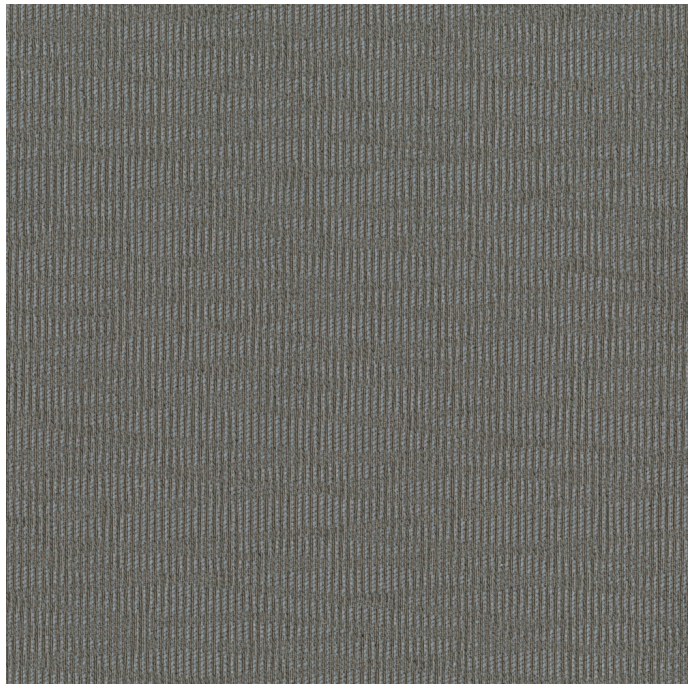
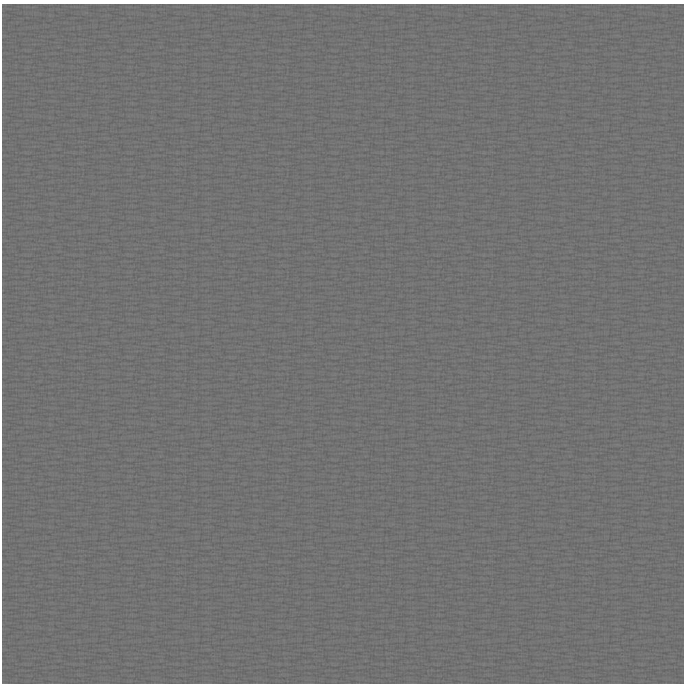
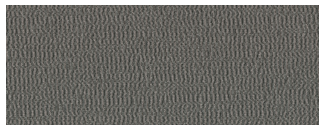


Image Shown: Warp Horizontal



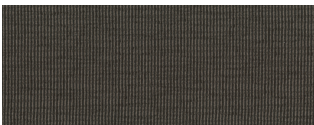
Repeat



Briquette 5F92



Blizzard 5F91



Mud Pie 5F85




Papyrus 5F89



Petoskey 5F87

OVERVIEW

Material Type	Woven
Price	Price Group 2
Offering	Standard Surfaces
Brand	Steelcase
Content	100% Total Recycled Content; 58% Pre-Consumer Recycled Polyester, 42% Post-Consumer Recycled Polyester
Application	Vertical Surface
Global Availability	Americas
Cleaning Code	S
Design	Solid, Pattern, Texture
Sustainability	Does Not Contain Flame Retardants, Does Not Contain PVC, Does Not Contain PFAS, Does Not Contain Heavy Metals
ACT	

SPECS

Abrasion Taber	100
Dry Crocking	Class 4
Wet Crocking	Class 4
Colorfastness to Light	Class 4
Fire Retardancy	This fabric is approved for use on Steelcase UL listed panels (vertical surfaces)

CHARACTERISTICS

Fabric Backing	None
Topical Finish	None
Horizontal Repeat	8.25
Vertical Repeat	9
Weight	16 oz per linear yard
Width	66 Inches
Country of Origin	United States
Warranty	12 Year

**FULL AVAILABILITY**

---

BIVI SCREEN 2 (H)

C:SCAPE SCREENS (H)

CURRENCY ENHANCED TACKBOARD  
(H)

DIVISIO SCREEN (H)

EE PARAMETRIC TACKBOARD (H)

EE WKSURFS (H)

FLEX CURVED SCREENS (H)

FLEXFRAME SKINS (H)

FMSSF SCREENS (H)

FRAMEONE CENTERED SCREENS (H)

MACKINAC (H)

PREMIUM 110 SERIES TKBD (H)

PREMIUM 555 SERIES TKBD (H)

PREMIUM EDGE SERIES TKBD (H)

PREMIUM SESSION SERIES TKBD (H)

PREMIUM TACKBOARDS (H)

SARTO SCREENS (H)

SOBA (H)

TOUR TACKBOARD (H)

WORKSURFACE SIDE SCREENS (H)