

Steelcase

3D MICROKNIT

Malt 5T25

EMEA 5T25

APAC 5T25

Materials are displayed for reference and may vary by screen and print quality. Please refer to a physical sample for actual color and detail

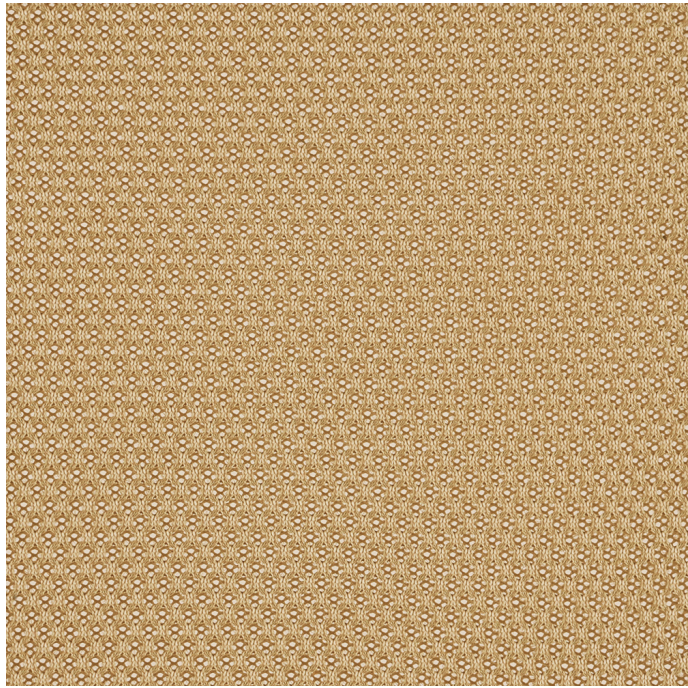
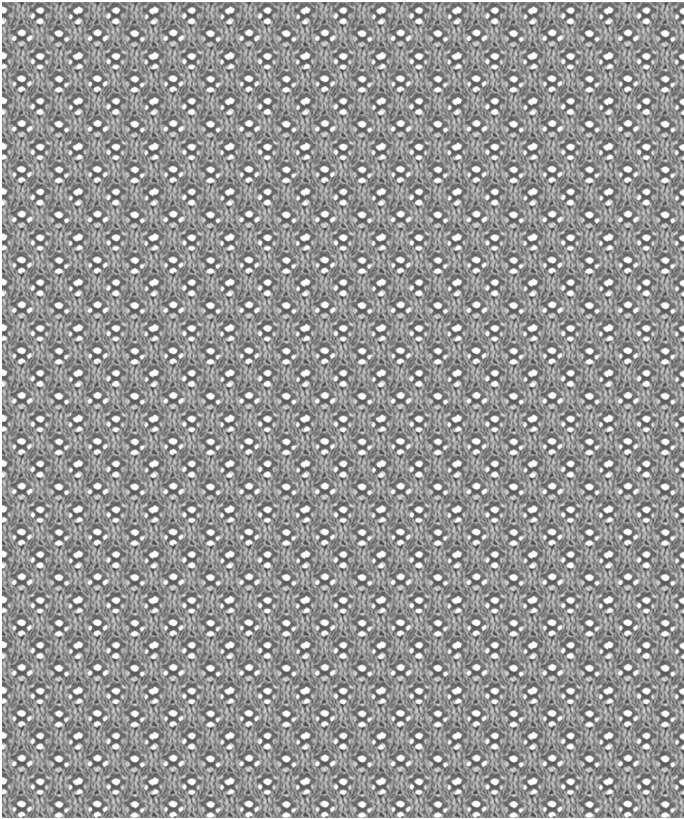
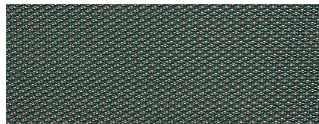


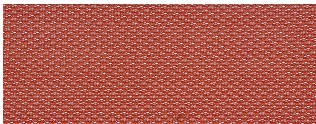
Image Shown: Warp Horizontal



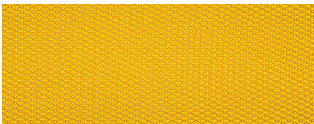
Repeat



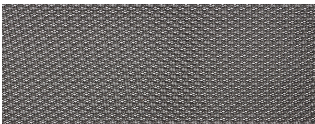
Peacock 5T33



Saffron 5T38



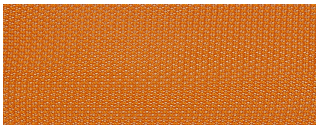
Canary 5T30



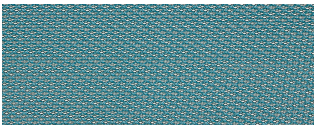
Graphite 5T29



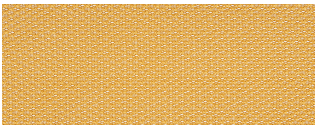
Concord 5T28



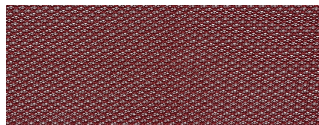
Tangerine 5T27



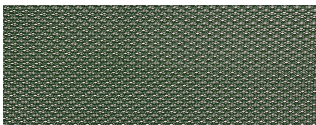
Lagoon 5T37



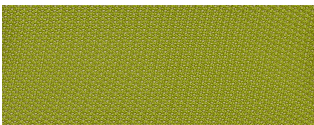
Honey 5T36



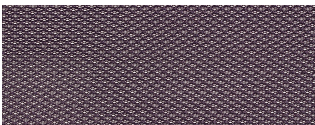
Merlot 5T35



Jungle 5T34



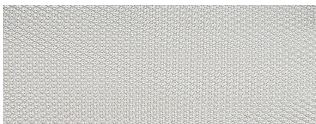
Wasabi 5T26



Aubergine 5T32



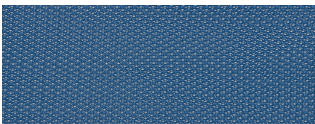
Seagull 5T31



Nickel 5T20

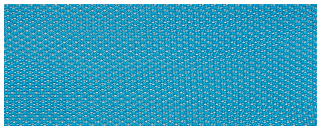


Licorice 5T21

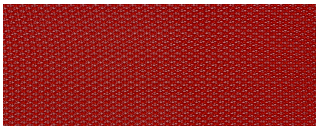


Royal Blue 5T22

COLORWAYS







Blue Jay 5T23



Scarlet 5T24

OVERVIEW

Material Type	Knit/Mesh
Price	Mesh
Offering	Standard Surfaces
Brand	Steelcase
Content	100% Polyester
Application	Seating Upholstery
Global Availability	Americas, Europe, Middle East, Africa, Asia Pacific
Cleaning Code	WS
Design	Solid, Pattern, Texture
Sustainability	Oeko-Tex® Standard 100
Sustainability	Does Not Contain PFAS
ACT	   

SPECS

Abrasion Wyzenbeek	100,000 Double Rubs
Colorfastness to Light	Class 4

CHARACTERISTICS

Fabric Backing	None
Topical Finish	None
Weight	19 oz per linear yard
Width	54 Inches
Country of Origin	United States
Warranty	12 Year

Steelcase
3D MICROKNIT

FULL AVAILABILITY

435 STEELCASE SERIES 1 (H,V)

436 SERIES 2 UPH SEAT (H,V)

482 AMIA AIR SEWN (H,V)

482 AMIA AIR STANDARD (H,V)

SPFURN (H,V)

SPSEATING (H,V)

Steelcase

Visit [Steelcase.com](https://www.steelcase.com)

©2020 Steelcase Inc. All rights reserved. All specifications subject to change without notice.
Trademarks used herein are the property of Steelcase Inc. or of their respective owners.