

Steelcase

# Ascent

Light Peacock TE09

EMEA TE09

Materials are displayed for reference and may vary by screen and print quality. Please refer to a physical sample for actual color and detail

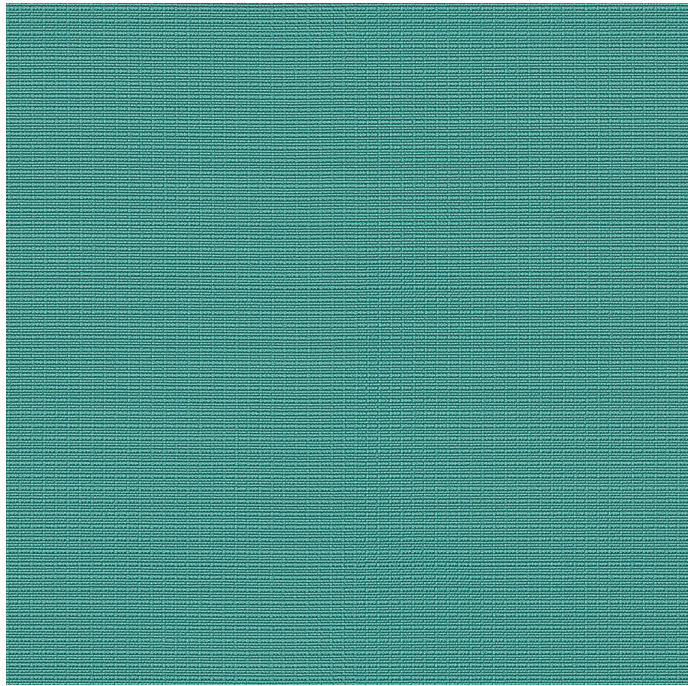
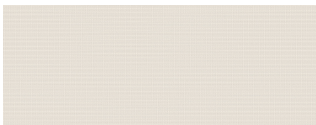


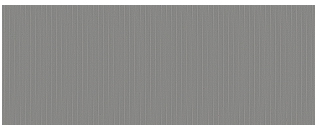
Image Shown: Warp Vertical



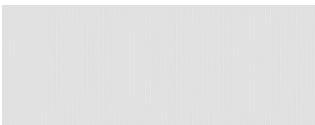
Sea Salt TE10



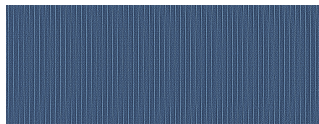
Sand TE08



Sterling Dark TE03



Arctic White TE04



Indigo TE05




Olivine TE06



Rose Quartz TE07

OVERVIEW

Material Type	Woven
Price	Price Group A
Offering	Standard Surfaces
Brand	Steelcase
Content	100% Polyester
Application	Vertical Surface
Global Availability	Americas, Europe, Middle East, Africa
Cleaning Code	W
Design	Texture
Sustainability	Does Not Contain PVC, Does Not Contain Flame Retardants, Does Not Contain Heavy Metals
ACT	

SPECS

Abrasion Taber	100
Dry Crocking	Class 4
Wet Crocking	Class 4
Colorfastness to Light	Class 4
Brush Pill	Class 3.5

CHARACTERISTICS

Fabric Backing	Polyurethane Coating
Topical Finish	None
Weight	4.6 oz per linear yard
Width	59 Inches
Country of Origin	China
Warranty	5 Year

**FULL AVAILABILITY**

---

WORK TENTS-BOUNDARY TENT (H,V)

WORK TENTS-POD TENT (H,V)

WORK TENTS-TABLE TENT (H,V)