

Steelcase

CONNECT 3D

Licorice 5026

EMEA 04-Connect3D

Materials are displayed for reference and may vary by screen and print quality. Please refer to a physical sample for actual color and detail

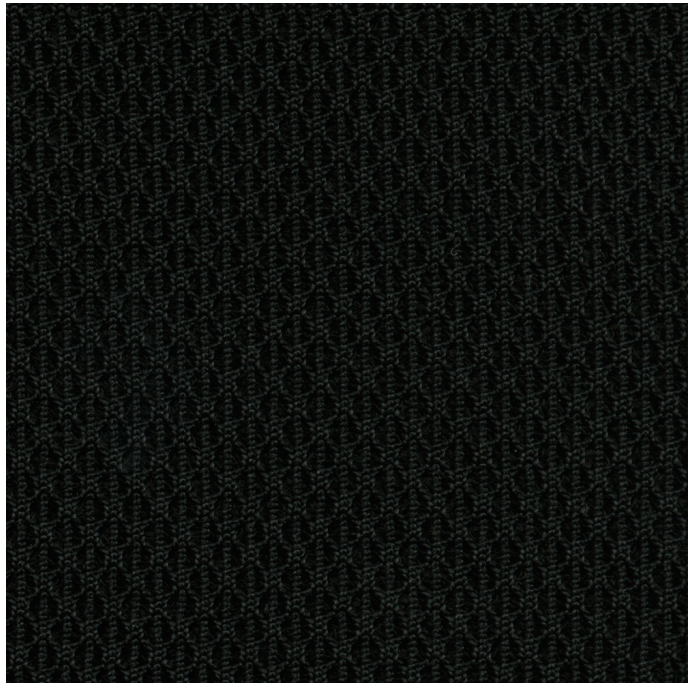
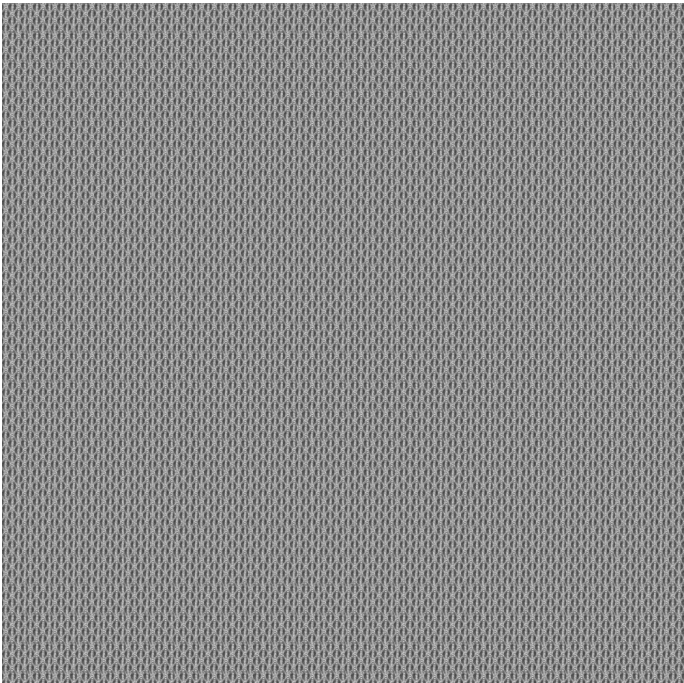
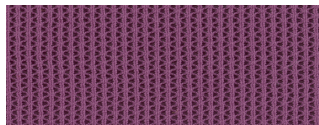


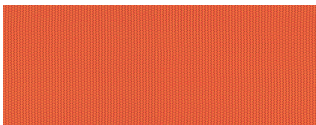
Image Shown: Warp Horizontal



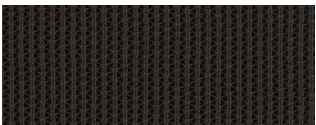
Repeat



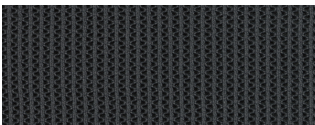
Concord 5019



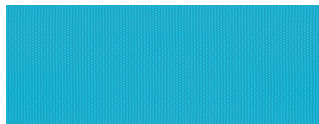
Tangerine 5017



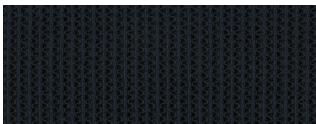
Root Beer 5028



Graphite 5025



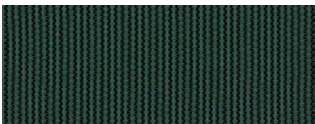
Blue Jay 5021



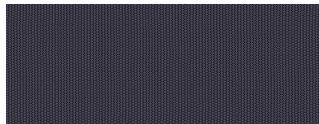
Sailor 5030



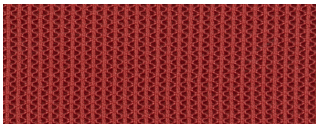
Nickel 5024



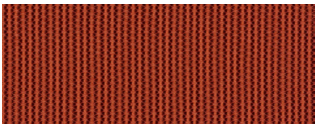
Peacock 5533



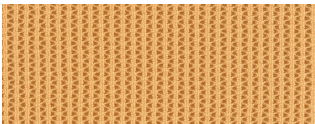
Aubergine 5532



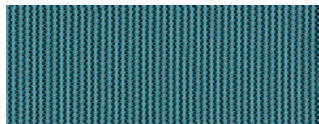
Scarlet 5018



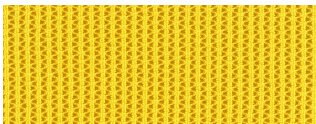
Saffron 5537



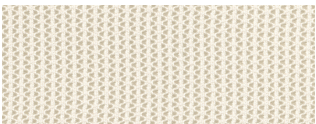
Turmeric/Honey 5016



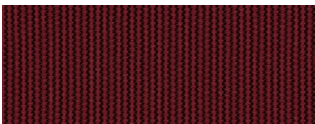
Lagoon 5536



Canary 5036

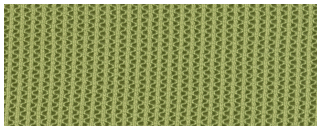


Coconut 5015

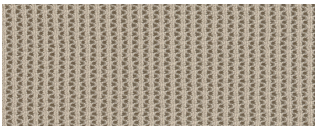


Merlot 5535

COLORWAYS



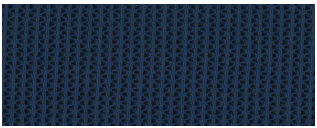
Wasabi 5023



Malt 5027







Jungle 5534



Royal Blue 5014

OVERVIEW

Material Type	Knit/Mesh
Price	Mesh
Offering	Select Surfaces
Brand	Steelcase
Content	100% Polyester (Antimony Free Yarn)+
Application	Seating Upholstery
Global Availability	Americas, Europe, Middle East, Africa
Cleaning Code	WS
Design	Solid, Texture
Sustainability	Does Not Contain PFAS
ACT	   

SPECS

Abrasion Wyzenbeek	100,000 Double Rubs
Colorfastness to Light	Class 4
CHARACTERISTICS	
Fabric Backing	None
Topical Finish	None
Horizontal Repeat	0.17
Vertical Repeat	0.13
Weight	20.5 oz per linear yard
Width	59 Inches
Country of Origin	United States
Warranty	12 Year

FULL AVAILABILITY

434 COBI (H,V)

434 COBI SEWN (H,V)

MEDIA:SCAPE LOUNGE (H,V)

SPFURN (H,V)

SPSEATING (H,V)