

Steelcase

QIVI NET

Lagoon QN15

EMEA 15-Net

APAC QN15

Materials are displayed for reference and may vary by screen and print quality. Please refer to a physical sample for actual color and detail

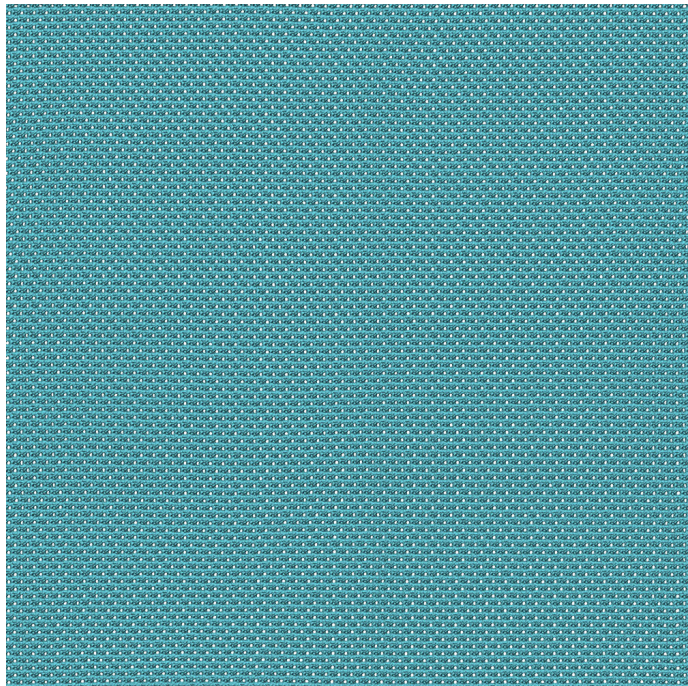
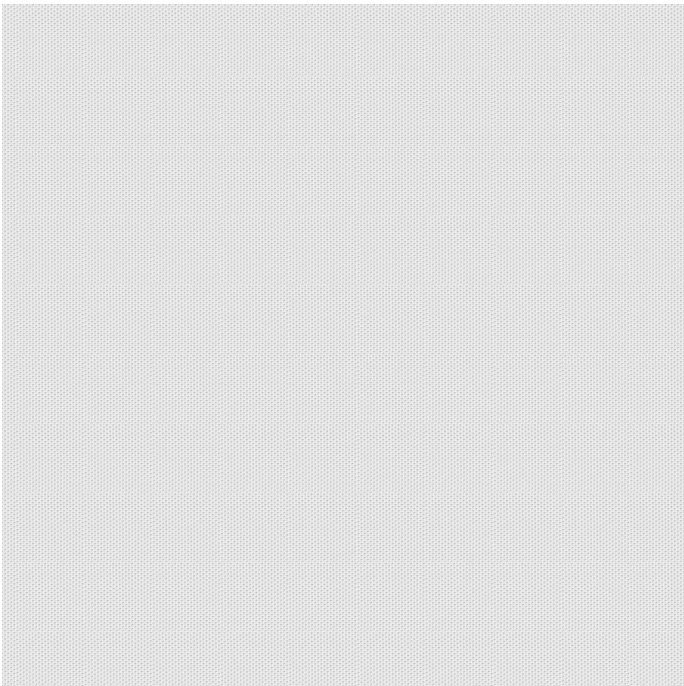


Image Shown: Warp Horizontal



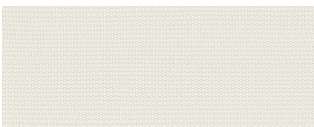
Repeat



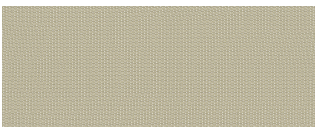
Scarlet QN07



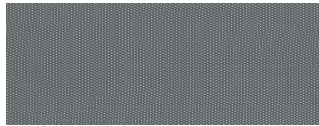
Blue Jay QN08



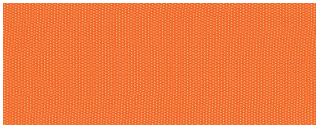
Coconut QN06



Malt QN05



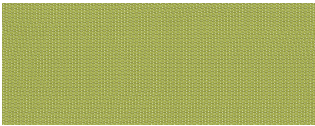
Graphite QN04



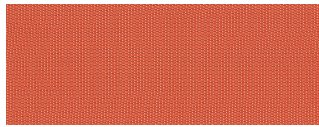
Tangerine QN03



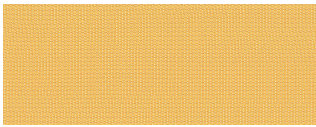
Licorice QN02



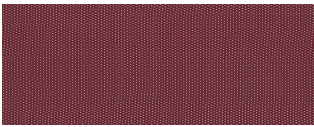
Wasabi QN01



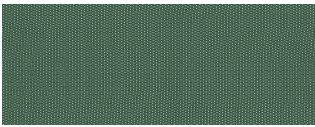
Saffron QN16



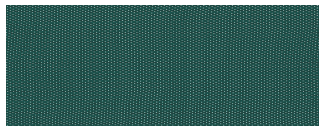
Honey QN14



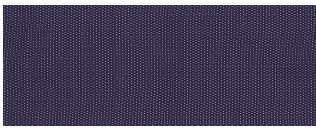
Merlot QN13



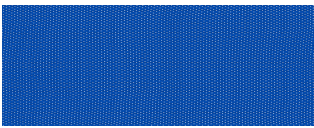
Jungle QN12



Peacock QN11







Aubergine QN10



Royal Blue QN09

OVERVIEW

Material Type	Knit/Mesh
Price	Mesh
Offering	Select Surfaces
Brand	Steelcase
Content	100% Nylon 6.6
Application	Seating Upholstery
Global Availability	Americas, Europe, Middle East, Africa, Asia Pacific
Cleaning Code	WS
Design	Solid, Pattern
Sustainability	Does Not Contain PFAS
ACT	   

SPECS

Abrasion Wyzenbeek	100,000 Double Rubs
Dry Crocking	Class 4
Wet Crocking	Class 4
Colorfastness to Light	Class 4
Brush Pill	Class 4
Fire Retardancy	Please check the COM database for CAL 133 results on this fabric

CHARACTERISTICS

Fabric Backing	None
Topical Finish	None
Width	Knit to Size
Country of Origin	United States
Warranty	12 Year

FULL AVAILABILITY

428 QIVI SEWN (H,V)

428 QIVI STD (H,V)

SPFURN (H,V)

SPSEATING (H,V)