

Steelcase

REPLY AIR MESH

Honey AR17

EMEA AR17

APAC AR17

Materials are displayed for reference and may vary by screen and print quality. Please refer to a physical sample for actual color and detail

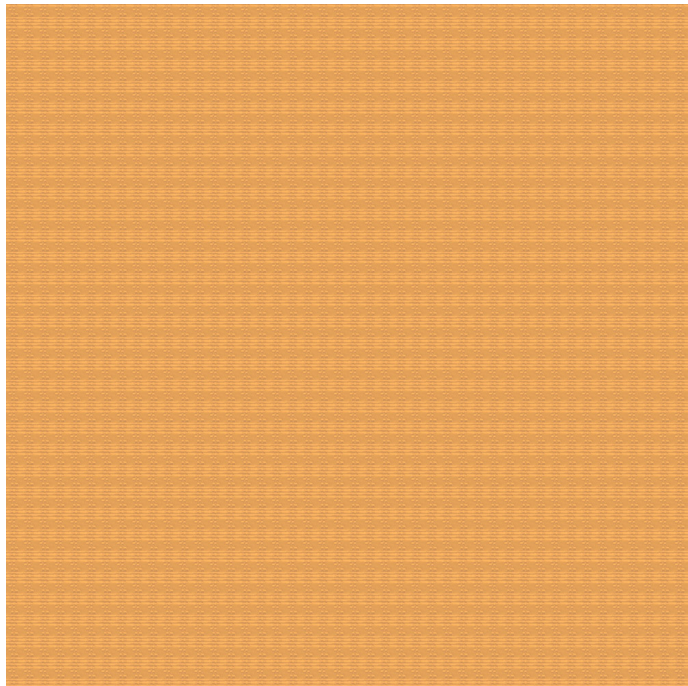
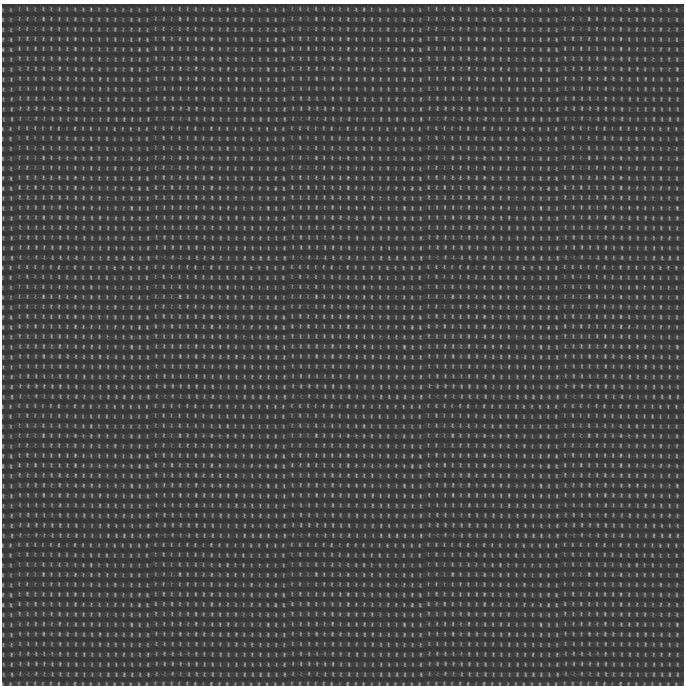


Image Shown: Warp Horizontal



Repeat



Red AR04



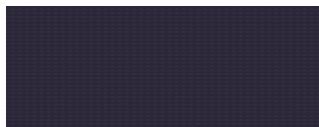
Peacock AR14



Jungle AR15



Merlot AR16



Aubergine AR13



Saffron AR19



Sable AR09



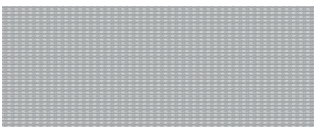
Apple Green AR06



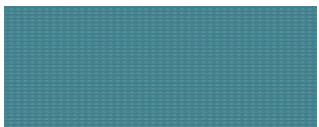
Royal Blue AR05



Black AR02



Grey AR01







Lagoon AR18

Steelcase

REPLY AIR MESH

OVERVIEW

| | |
|---------------------|---|
| Material Type | Knit/Mesh |
| Price | Mesh |
| Offering | Select Surfaces |
| Brand | Steelcase |
| Content | 64% Polyester, 36% Nylon (Polyamide) |
| Application | Seating Upholstery |
| Global Availability | Americas, Europe, Middle East, Africa, Asia Pacific |
| Cleaning Code | WS |
| Design | Solid, Pattern, Texture |
| Sustainability | Does Not Contain PFAS |
| ACT |     |

SPECS

| | |
|------------------------|--|
| Abrasion Wyzenbeek | 100,000 Double Rubs |
| Colorfastness to Light | Class 4 |
| Fire Retardancy | Please check the COM database for CAL 133 results on this fabric |

CHARACTERISTICS

| | |
|-------------------|-----------------------|
| Fabric Backing | None |
| Topical Finish | None |
| Weight | 16 oz per linear yard |
| Width | |
| Country of Origin | Italy |
| Warranty | 12 Year |

FULL AVAILABILITY

463 ALLY SEWN (H,V)

466 REPLY MULTI-USE SEWN (H,V)

466 REPLY MULTI-USE STD (H,V)

466 REPLY WORK (TASK) SEWN (H,V)

CRC CUSHION TOP (H,V)

FLW SEATING (H,V)

NOOI (H,V)

SIMPLE SEATING COVER W/SNAPS
SLIPCOVER (H,V)

SIMPLE SEATING SEAT/BACK CUSH
(H,V)

SIMPLE SEATING TEXTILES
SLIPCOVER (H,V)

SPFURN (H,V)

SPSEATING (H,V)

TS2FILE (H,V)