

Steelcase

# 3D MICROKNIT

Concord 5T28

EMEA 5T28

APAC 5T28

Materials are displayed for reference and may vary by screen and print quality. Please refer to a physical sample for actual color and detail

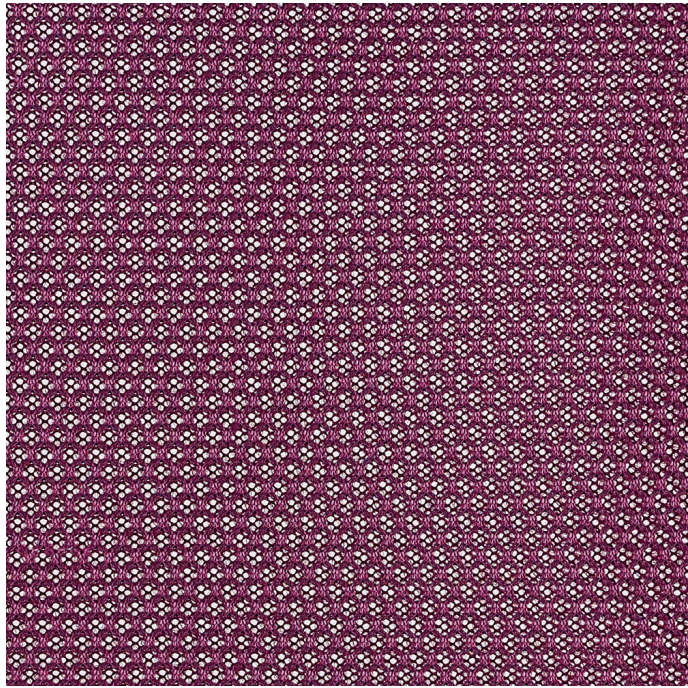
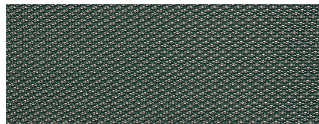


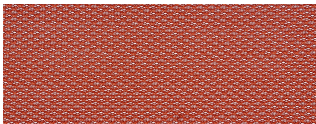
Image Shown: Warp Horizontal



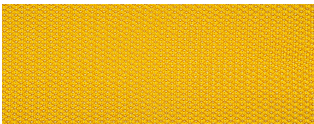
Repeat



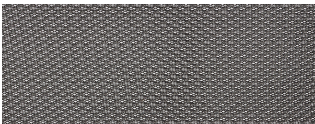
Peacock 5T33



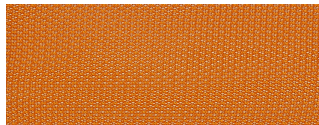
Saffron 5T38



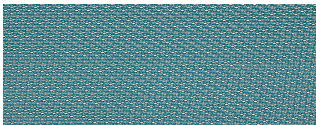
Canary 5T30



Graphite 5T29



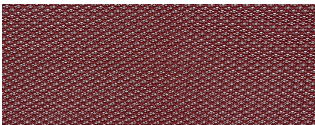
Tangerine 5T27



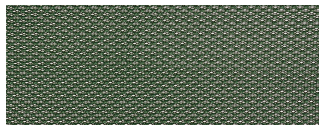
Lagoon 5T37



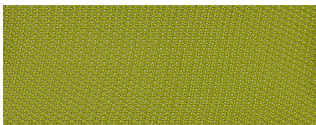
Honey 5T36



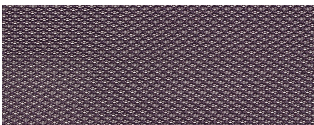
Merlot 5T35



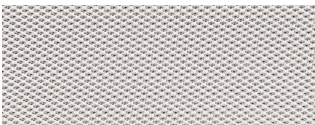
Jungle 5T34



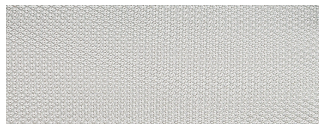
Wasabi 5T26



Aubergine 5T32



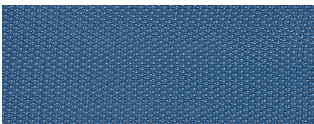
Seagull 5T31



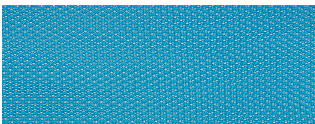
Nickel 5T20



Licorice 5T21



Royal Blue 5T22

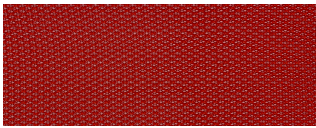


Blue Jay 5T23



COLORWAYS

---







Scarlet 5T24



Malt 5T25



OVERVIEW

Material Type	Knit/Mesh
Price	Mesh
Offering	Standard Surfaces
Brand	Steelcase
Content	100% Polyester
Application	Seating Upholstery
Global Availability	Americas, Europe, Middle East, Africa, Asia Pacific
Cleaning Code	WS
Design	Solid, Pattern, Texture
Sustainability	Oeko-Tex® Standard 100
Sustainability	Does Not Contain PFAS
ACT	   

SPECS

Abrasion Wyzenbeek	100,000 Double Rubs
Colorfastness to Light	Class 4
CHARACTERISTICS	
Fabric Backing	None
Topical Finish	None
Weight	19 oz per linear yard
Width	54 Inches
Country of Origin	United States
Warranty	12 Year



**FULL AVAILABILITY**

---

435 STEELCASE SERIES 1 (H,V)

436 SERIES 2 UPH SEAT (H,V)

482 AMIA AIR SEWN (H,V)

482 AMIA AIR STANDARD (H,V)

SPFURN (H,V)

SPSEATING (H,V)