

Steelcase

# CONNECT 3D

Concord 5019

Materials are displayed for reference and may vary by screen and print quality. Please refer to a physical sample for actual color and detail

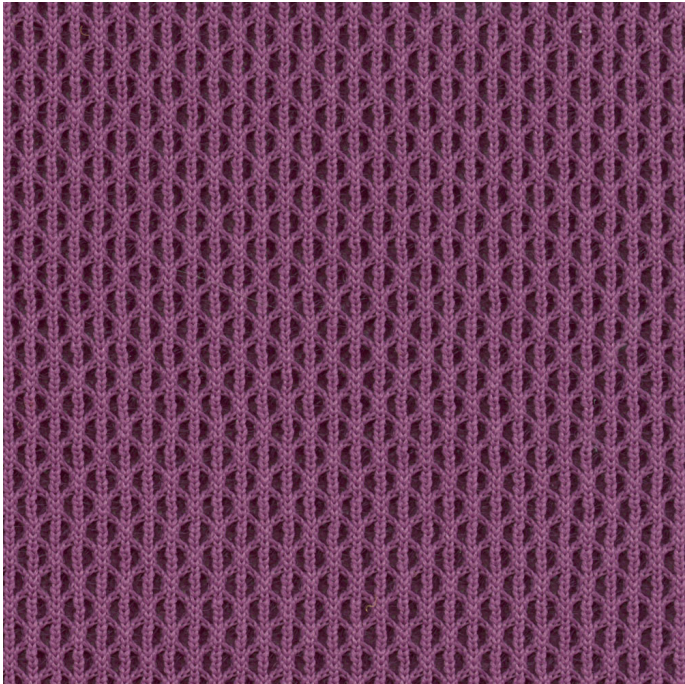
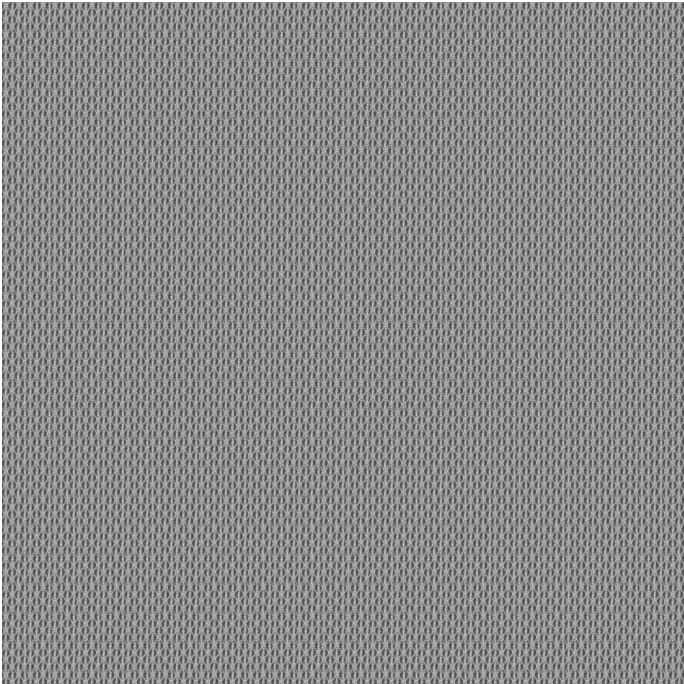
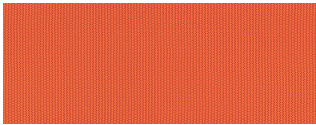


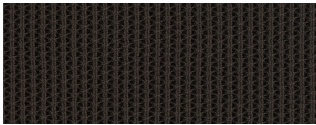
Image Shown: Warp Horizontal



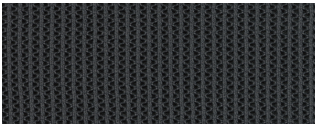
Repeat



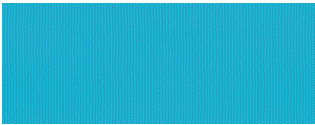
Tangerine 5017



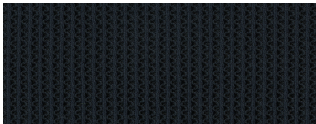
Root Beer 5028



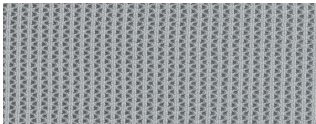
Graphite 5025



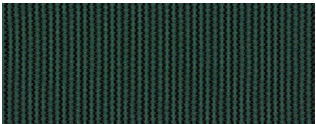
Blue Jay 5021



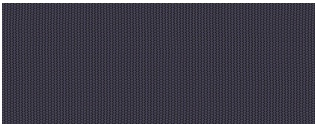
Sailor 5030



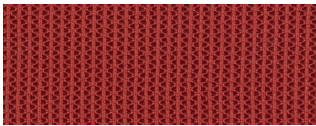
Nickel 5024



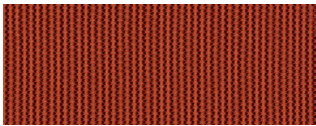
Peacock 5533



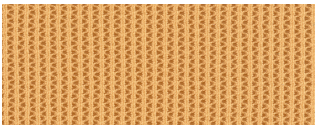
Aubergine 5532



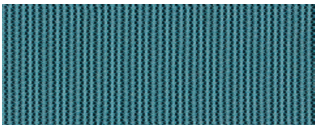
Scarlet 5018



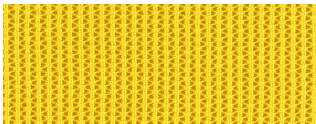
Saffron 5537



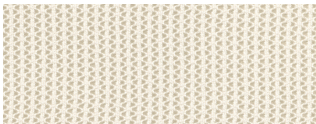
Turmeric/Honey 5016



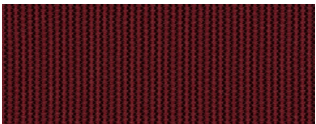
Lagoon 5536



Canary 5036



Coconut 5015



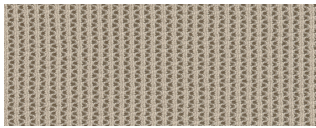
Merlot 5535



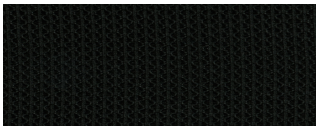
Wasabi 5023

COLORWAYS

---



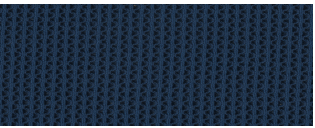
Malt 5027



Licorice 5026




Jungle 5534



Royal Blue 5014

OVERVIEW

Material Type	Knit/Mesh
Price	Mesh
Offering	Select Surfaces
Brand	Steelcase
Content	100% Polyester (Antimony Free Yarn)+
Application	Seating Upholstery
Global Availability	Americas
Cleaning Code	WS
Design	Solid, Texture
Sustainability	Does Not Contain PFAS
ACT	

SPECS

Abrasion Wyzenbeek	100,000 Double Rubs
Colorfastness to Light	Class 4
CHARACTERISTICS	
Fabric Backing	None
Topical Finish	None
Horizontal Repeat	0.17
Vertical Repeat	0.13
Weight	20.5 oz per linear yard
Width	59 Inches
Country of Origin	United States
Warranty	12 Year

**FULL AVAILABILITY**

---

434 COBI (H,V)

434 COBI SEWN (H,V)

MEDIA:SCAPE LOUNGE (H,V)

SPFURN (H,V)

SPSEATING (H,V)