

Steelcase

3D KNIT

Coconut 5065

EMEA 02-3DKnit

APAC 5065

Materials are displayed for reference and may vary by screen and print quality. Please refer to a physical sample for actual color and detail

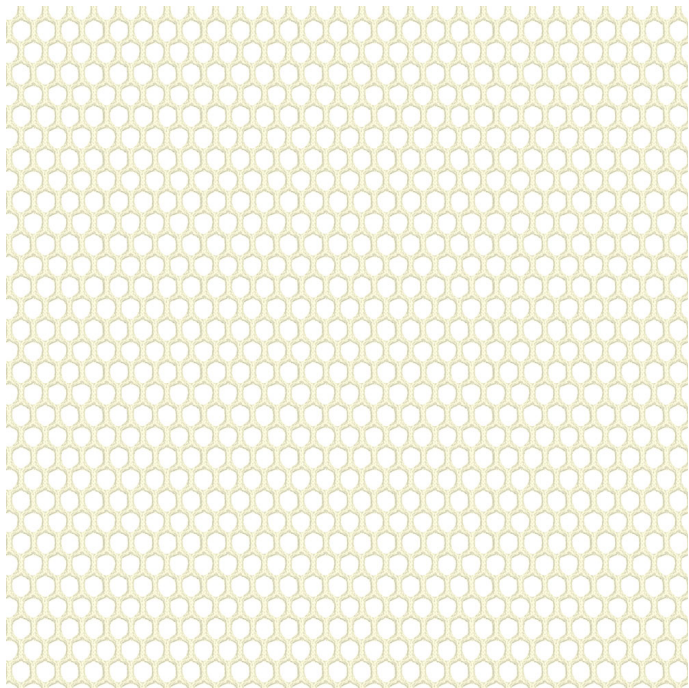
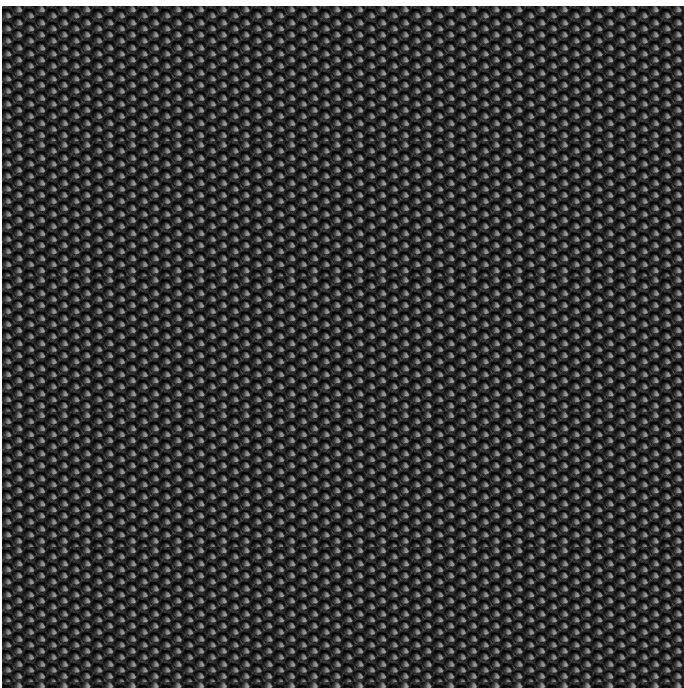
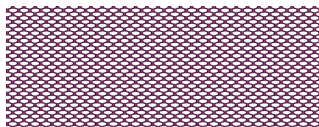


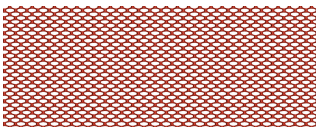
Image Shown: Warp Horizontal



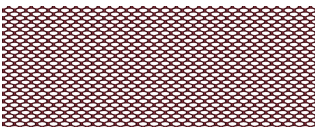
Repeat



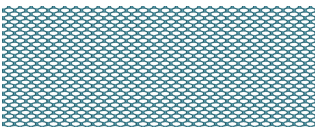
Concord 5097



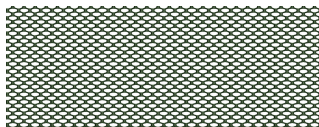
Saffron 5565



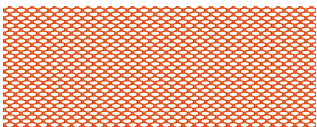
Merlot 5563



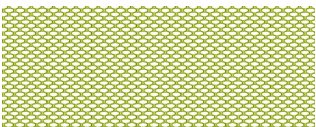
Lagoon 5564



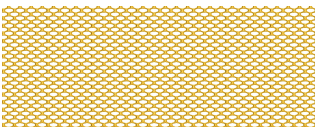
Jungle 5562



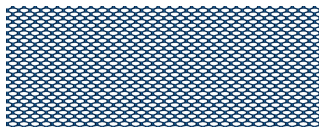
Tangerine 5094



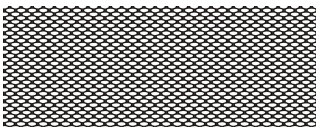
Wasabi 5090



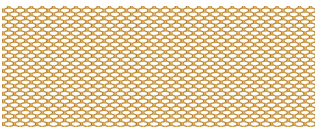
Canary 5054



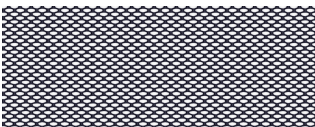
Royal Blue 5089



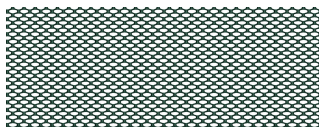
Licorice 5064



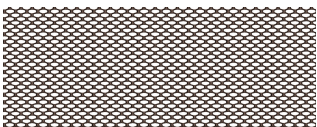
Turmeric/Honey 5096



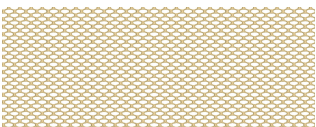
Aubergine 5560



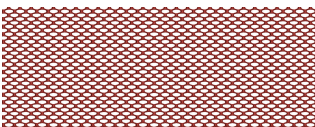
Peacock 5561



Root Beer 5067

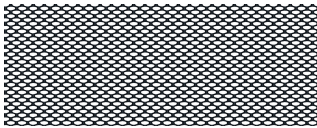


Malt 5066

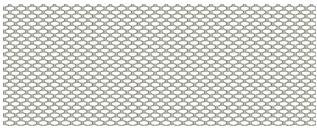


Scarlet 5095

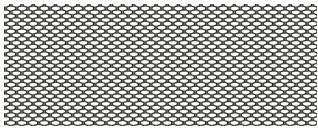
COLORWAYS



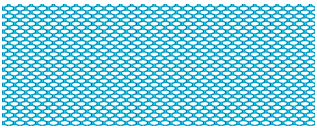
Sailor 5059



Nickel 5093







Graphite 5092



Blue Jay 5098

OVERVIEW

Material Type	Knit/Mesh
Price	Mesh
Offering	Standard Surfaces
Brand	Steelcase
Content	100% Polyester
Application	Seating Upholstery
Global Availability	Americas, Europe, Middle East, Africa, Asia Pacific
Cleaning Code	WS
Design	Solid, Pattern, Texture
Sustainability	Does Not Contain PFAS
ACT	   

SPECS

Abrasion Wyzenbeek	100,000 Double Rubs
Colorfastness to Light	Class 4
CHARACTERISTICS	
Fabric Backing	None
Topical Finish	None
Horizontal Repeat	0.22
Vertical Repeat	0.38
Weight	19 oz per linear yard
Width	57 Inches
Country of Origin	United States
Warranty	12 Year

FULL AVAILABILITY

416 I2I LOUNGE CHAIR (H,V)

442 GESTURE (H,V)

462 LEAP 3D KNIT SEWN (H,V)

462 LEAP 3D KNIT STD (H,V)

462 LEAP PLUS 3D KNIT SEWN (H,V)

462 LEAP PLUS 3D KNIT STD (H,V)

465 THINK SEWN (OLD) (H,V)

465 THINK UPH BACK (H,V)

482 AMIA 3D KNIT SEWN (H,V)

482 AMIA 3D KNIT STANDARD (H,V)

SPFURN (H,V)

SPSEATING (H,V)