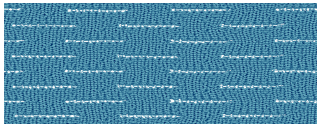
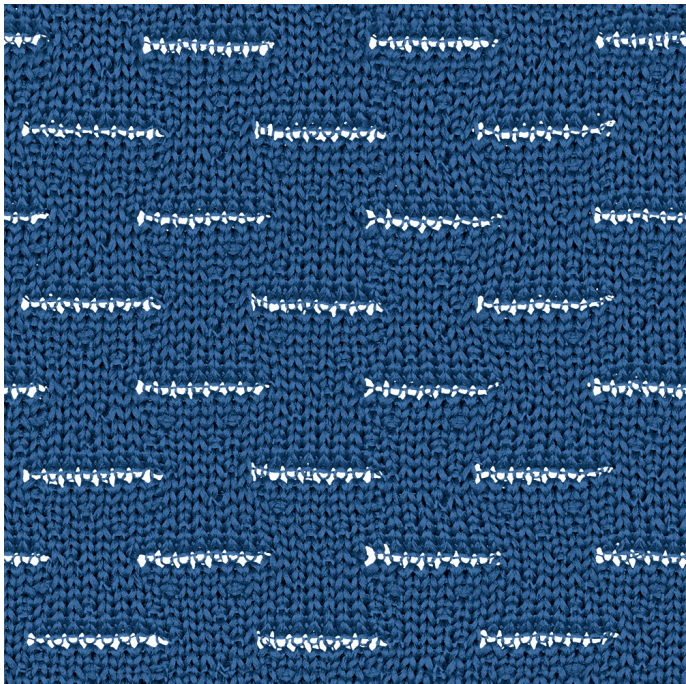


Steelcase

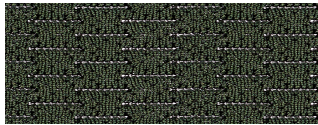
Lagunitas Knit

Blue Ink 5K72

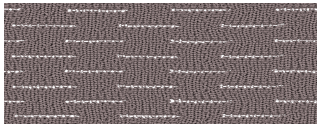
Materials are displayed for reference and may vary by screen and print quality. Please refer to a physical sample for actual color and detail



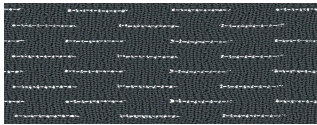
Ocean 5K61



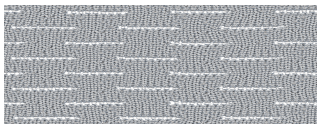
Leaf 5K63



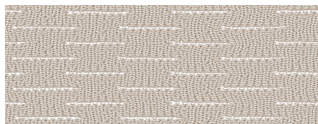
Pewter 5K52



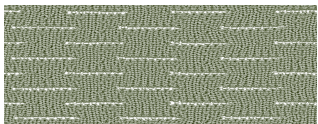
Black 5K54



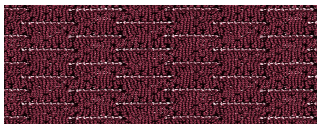
Silver 5K51



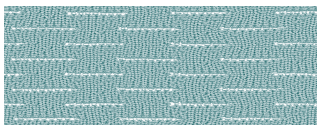
Sand 5K50



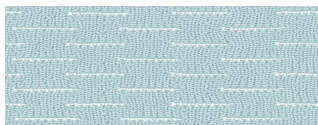
Olive 5K71



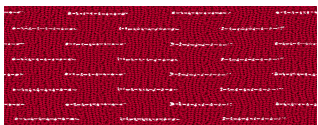
Currant 5K67



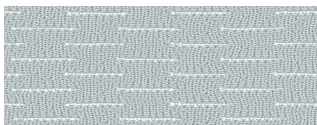
Blue Bird 5K73



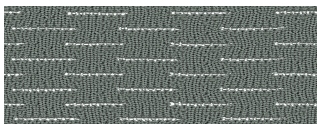
Ice 5K60



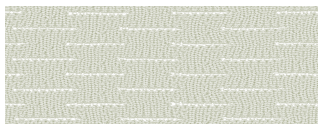
Fire 5K55



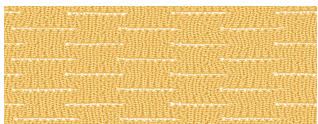
Silver Grey 5K70



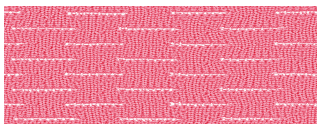
Coal 5K59



Ivory 5K58



Goldenrod 5K75



Blush 5K74

OVERVIEW

Material Type	Knit/Mesh
Price	Coalesse Price Group 2
Offering	Select Surfaces
Brand	Coalesse
Content	89% polyester, 11% nylon
Application	Vertical Surface
Global Availability	Americas
Cleaning Code	WS
Design	Solid

SPECS

Abrasion Wyzenbeek	100,000 Double Rubs
Dry Crocking	Class 4.5
Wet Crocking	Class 4.5
Colorfastness to Light	Class 4.5
Brush Pill	Class 5
Fire Retardancy	Please check the COM database for CAL 133 results on this fabric

CHARACTERISTICS

Fabric Backing	None
Topical Finish	None
Weight	11.2 oz per linear yard
Country of Origin	United States
Warranty	Warrantied By Supplier