

Steelcase

# QUANTUM MESH

Arctic Ermine T620

Materials are displayed for reference and may vary by screen and print quality. Please refer to a physical sample for actual color and detail

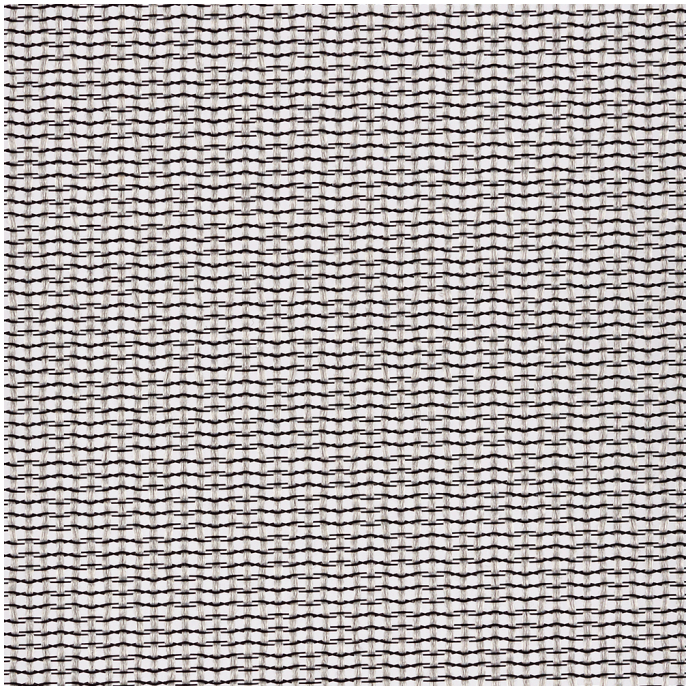
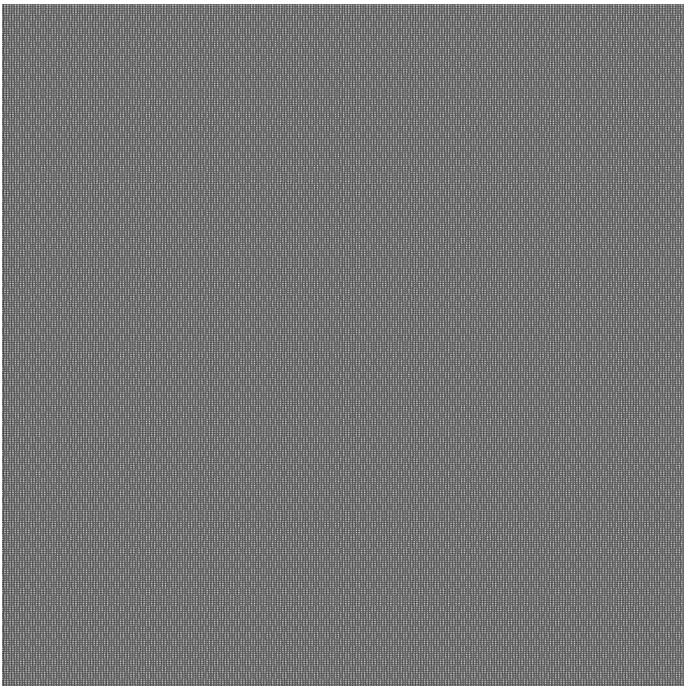
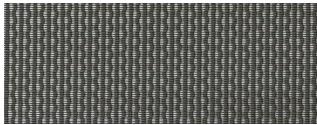


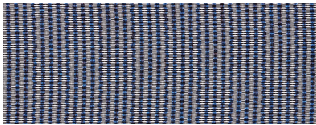
Image Shown: Warp Horizontal



Repeat




Sultry Smoke T615



Marina Blue T625

OVERVIEW

Material Type	Knit/Mesh
Price	Mesh
Offering	Select Surfaces
Brand	Steelcase
Content	42% Copolyester Elastomer, 58% Polyester
Application	Seating Upholstery
Global Availability	Americas
Cleaning Code	W
Design	Solid, Pattern, Texture
ACT	

SPECS

Abrasion Taber	3,500
Colorfastness to Light	Class 4
Fire Retardancy	This fabric is approved for use on Steelcase UL listed panels (vertical surfaces)

CHARACTERISTICS

Fabric Backing	None
Topical Finish	None
Weight	13 oz per linear yard
Width	69 Inches
Country of Origin	United States
Warranty	5 Year

**FULL AVAILABILITY**

---

BIVI HOODIE (H,V)

CAMPFIRE SCREEN (H,V)

CRC CUSHION TOP (H,V)

FLW SEATING (H,V)

SIMPLE SEATING COVER W/SNAPS  
SLIPCOVER (H,V)

SIMPLE SEATING SEAT/BACK CUSH  
(H,V)

SIMPLE SEATING TEXTILES  
SLIPCOVER (H,V)

SPFURN (H,V)

SPSEATING (H,V)

TS2FILE (H,V)