

Designtex

GRAVITY

Aluminum 4106/803

Materials are displayed for reference and may vary by screen and print quality. Please refer to a physical sample for actual color and detail

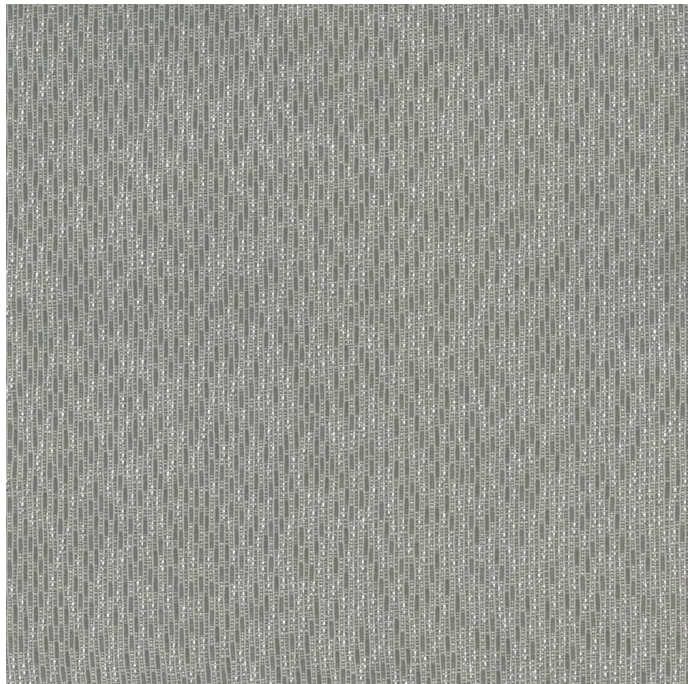
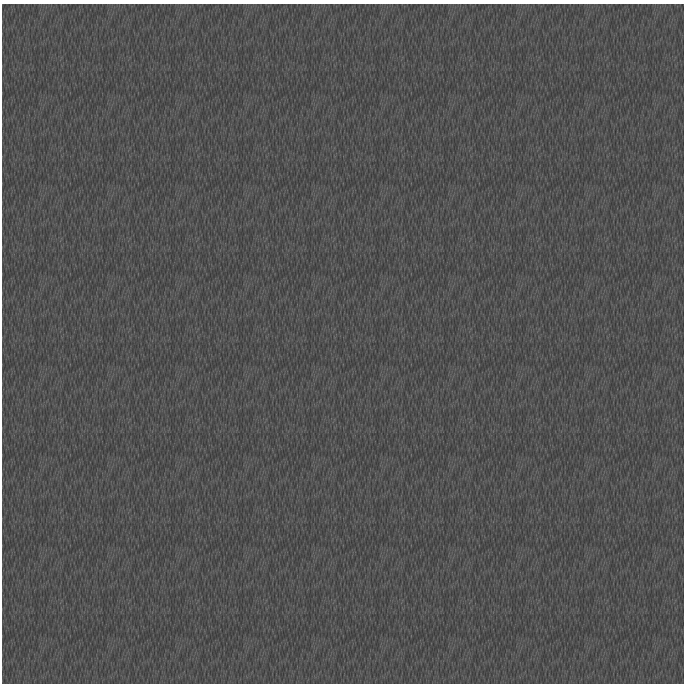
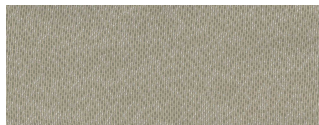


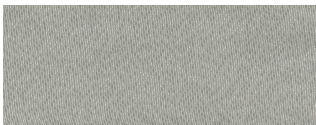
Image Shown: Warp Horizontal



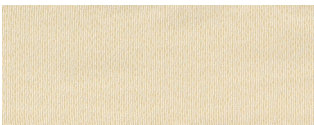
Repeat



Sage 4106/103



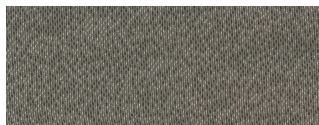
Shale 4106/802



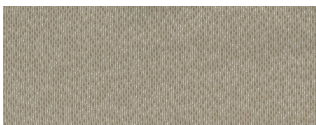
Cream 4106/101



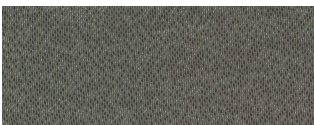
Ice 4106/801



Earth 4106/105



Lichen 4106/102




Carbon 4106/804



Flax 4106/104

OVERVIEW

Material Type	Woven
Price	Price Group 3
Offering	Designtex Select Surfaces, Select Surfaces
Brand	Steelcase, Coalesse
Content	100% Total Recycled Content; 42% Post-Consumer Recycled Polyester, 58% Pre-Consumer Recycled Polyester
Sample Ordering	Order from Designtex
Application	Vertical Surface
Global Availability	Americas
Cleaning Code	WS
Bleach Cleanable	Yes
Design	Solid, Pattern, Texture
Sustainability	Healthier Hospitals
Sustainability	Does Not Contain PFAS
ACT	

SPECS

Dry Crocking	Class 4
Wet Crocking	Class 3
Colorfastness to Light	Class 4
Fire Retardancy	This fabric is approved for use on Steelcase UL listed panels (vertical surfaces)

CHARACTERISTICS

Fabric Backing	None
Topical Finish	None
Weight	11.04 oz per linear yard
Width	66 Inches
Country of Origin	United States
Warranty	Warrantied By Supplier

FULL AVAILABILITY

301 A LA CARTE GUEST (H,V)	DECK (H,V)	SIMPLE SEATING COVER W/SNAPS SLIPCOVER (H,V)
301 A LA CARTE RD BACK (H,V)	DIVISIO SCREEN (H)	SIMPLE SEATING SEAT/BACK CUSH (H,V)
301 A LA CARTE SQ BACK (H,V)	EE PARAMETRIC TACKBOARD (H,V)	
308 CREW GUEST (H,V)	EE WKSURFS (H)	SIMPLE SEATING TEXTILES SLIPCOVER (H,V)
376 SAWYER (H,V)	ENGLAND (H,V)	SOBA (H,V)
383 JERSEY STANDARD (H,V)	ESCAPADE (H,V)	SORREL (H,V)
428 QIVI STD (H,V)	EVERWALL SOLID SKIN - FABRIC (H,V)	SPFURN (H,V)
466 REPLY MULTI-USE STD (H,V)	EVERWALL SOLID SKIN - STEEL, FABRIC (H,V)	SPSEATING (H,V)
475 PLAYER (H,V)	FLEX CURVED SCREENS (H)	SVC MOD TKBDS/HUTCH KITS (H)
490 MOVE (H,V)	FLEXFRAME SKINS (H,V)	TERRAZZO (H,V)
9000 ACCENT TACKBOARD (H)	FLEX FREESTANDING SCREENS (V)	TOPAZ (H,V)
9000 TACKBOARD (H)	FLW SEATING (H,V)	TS2 PEDESTAL CUSHION (H,V)
ALCOVE (H,V)	FMSSF SCREENS (H)	TS2FILE (H,V)
ANSWER PANEL (H,V)	FRAMEONE CENTERED SCREENS (H)	UNIVERSAL LATERAL CUSHION TOP (H,V)
ANSWER TACKBOARD (H)	JACKET (H,V)	UNIVERSAL MOBILE PED (H,V)
ASPEKT (H,V)	KICK PANEL (H)	V.I.A. (H,V)
AVENIR PANEL (H)	MACKINAC (H)	WORKSURFACE SIDE SCREENS (H)
AVENIR TACKBOARD (H)	MOBILE PEDESTAL CUSHION (H,V)	
BIVI SCREEN 2 (H)	MONTAGE PANEL (H)	
C:SCAPE CUSHION TOPS (H,V)	NOOI (H,V)	
C:SCAPE SCREENS (H)	ORIANA (H,V)	
COLLABORATION (H,V)	PRIVACY WALL (V)	
CONTEXT PANEL (H)	PRIVACY WALL FEATURE STRIP (V)	
CRC CUSHION TOP (H,V)	S9000 ENHANCED (H,V)	
CURRENCY ENHANCED TACKBOARD (H,V)	SARTO SCREENS (H)	