



Inspiring a  
*Life of Learning*





---

## Table of Contents

4	<b>Introduction</b>	
6	<b>Learning Spaces</b>	38
		<b>Gaming + Outdoor Spaces</b>
12	<b>Classroom Spaces</b>	44
		<b>Global Research + Insights</b>
18	<b>Innovation + Maker Spaces</b>	46
		<b>Customer Spaces</b>
24	<b>Libraries + Learning Commons + In-Between Spaces</b>	54
		<b>Our Commitment to People and the Planet</b>
32	<b>Faculty + Administration Spaces</b>	56
		<b>The Steelcase Difference</b>
		58
		<b>Our Community of Brands</b>
		62
		<b>Notable Products from Our Portfolio</b>



# A Life of Learning

Learning is how we explore our boundless potential and connect to the world around us. At Steelcase Learning, we inspire a life of learning by creating places that engage and ultimately empower people, within and beyond the classroom.

Throughout our history we've focused on how the design of spaces can impact every stage in a learner's path — from early to higher education, and eventually, to their work experience and beyond. At the same time, we know that learning is different for everyone. We serve the unique needs for each level and type of learning, while also understanding the common threads that improve learning outcomes.

And, we're always learning, too — from schools, colleges, universities and educational organizations that we partner with throughout the world.

Our human-centered, primary research approach gives us the insights to design solutions for the specific conditions that students, educators and institutions face, in both current and emerging learning environments.

In everything we do, we believe in a life of learning. We're helping to make the spaces that can prepare people to grow and thrive, in all the places where learning happens.





## A modern, open-plan office space with a concrete wall, wooden floor, and various workstations. The room features several whiteboards, a mobile whiteboard on wheels, and a large blackboard. Workstations include black desks with red mesh chairs, a small wooden table with orange chairs, and a lounge area with grey armchairs and a red sofa. Two large white spherical pendant lights hang from the ceiling.

From classrooms to libraries and beyond, having access to a variety of tailored and empowering learning environments across any grade level, subject matter or class size encourages people to grow into a life of learning.





## Classroom Spaces

When classrooms are designed for participative, active and engaged learning, they offer experiences that help students and educators function at their best—cognitively, physically and emotionally. These classrooms support:

- Person-to-person and hybrid connections
- Easy interactions
- A variety of teaching methods

## Gaming spaces

Gaming at work can be leveraged to make work more productive, engaging and just plain fun. Gaming spaces support:

- Community
- Authenticity
- Brain regeneration
- Skills development



## Innovation + Maker Spaces

Maker spaces are environments designed for thinking through problems, prototyping solutions and sharing ideas. They support:

- Creativity and curiosity
- Persistence and confidence





## Faculty + Administration Spaces

Faculty + administration spaces are highly-specialized spaces that support a range of activities. They support:

- Focus work
- Collaboration
- Regeneration
- Interactions with students



## Outdoor spaces

Outdoor spaces offer users a change of scenery and connection to nature, as well as a place for respite, socialization and connection with peers. They support:

- Rejuvenation
- Social interactions
- Movement and exercise



## Libraries + Learning Commons + In-Between Spaces

Libraries + Learning Commons + In-between spaces are designed for learning outside the classroom. They support:

- Informal interactions
- Peer-to-peer work
- Social learning



# Classroom Spaces

In the hybrid era, students are more engaged than ever in what and how they learn. As a result, more educators are seeking to create experiences that engage students through discussions, problem solving, group projects and other methods.

Classrooms must offer a great variety of settings and resources to support all the different ways learning happens today.





# Classroom Spaces

Today's classrooms need to support many types of learning: blended learning, active learning, large active learning, personalized learning, flipped learning, immersive learning, creative learning and hybrid learning.



Especially suited for K12 students, these chairs and tables help create a warm and friendly learning environment.



Designed for students of all ages, these chairs offer ergonomic seating comfort and contribute to better concentration.



This space allows users to make their work visible and to actively share content. The variety of postures fosters dynamic collaboration.



Equipped with mobile and reconfigurable furniture, this learning space supports active learning and can accommodate groups of different sizes.



This modular space equipped with analog and digital tools supports different types of collaboration.



Product Highlights



Vanerum  
Daisy



Steelcase Customized Solutions  
Lares



Vanerum  
Opti+ Move



Steelcase  
FlipTop Twin



# Innovation + Maker Spaces

Maker spaces, hacker spaces, project rooms, collaboration hubs, innovation labs, immersive learning environments—the portfolio of learning spaces keeps expanding as hands-on experiences are progressively celebrated as integral components of education.





# Innovation + Maker Spaces

Also called fab labs, hacker spaces, model shops or innovation labs, maker spaces help users develop practical skills by encouraging them to build and tinker with things, to see what works and what doesn't. They also cultivate creativity, curiosity, persistence and confidence, plus the ability to integrate information from various sources and consider multiple solutions— critically important mindsets for lifelong learning.



This maker space is a place of creativity and experimentation. It supports high energy and intense problem solving, perfect for learning while doing.



This hybrid space is designed with three key principles in mind: equity, engagement and ease.



This multifunctional space allows people to apply the Design Thinking methodology, quickly transitioning between different work modes (active collaboration, focus work, informal interaction...).



This collaboration space supports both in-person and remote collaboration. The perched and standing postures improve engagement.



Product Highlights



Vanerum  
Opti+ Move



Viccarbe  
Season



Orangebox  
AllowMe



Viccarbe  
Klip



# Libraries + Learning Commons + In-Between Spaces

Libraries and in-between spaces form the beating heart of the campus. They have a major influence on the atmosphere and identity of learning institutions and they are greatly valued by educators and students.





# Libraries + Learning Commons + In-Between Spaces

Learning can and should happen everywhere on campus. Libraries and in-between spaces can be so much more than quiet study or transition spaces. They can be flexible learning spaces for individuals and groups – all smart ways to better leverage valuable campus real estate. These informal learning spaces provide students with a choice of destinations to support their individual needs. Outside the classroom, these are the spaces where true student discovery often occurs.



This shielded nook offers users a touch-down destination to concentrate in a relaxed work posture.



This open collaborative space empowers people to connect, learn and work better in person or through hybrid meetings.



This open space facilitates quick connections between classes.



This nook supports focus work in an open environment.



The ergonomic task chair and individual table support focus work in this in-between space. The biophilic elements offer shielding and improve wellbeing.



In these lounge settings, students can work comfortably either individually or in small groups.



This space offers different postures and allows users to work individually or with others.



Product Highlights



Viccarbe  
Trestle



Vanerum  
Plant



Viccarbe  
Solar



Steelcase  
Obelos®



Product Highlights



Coalesse  
Coalesse Ensemble Lounge System



Steelcase  
Steelcase Flex Kiosk



Viccarbe  
Season



Orangebox  
Beyond the Desk



# Faculty + Administration Spaces

Faculty and administration workers help mold campus culture, influence students' engagement and define the quality of the university's instruction.

As highly specialized workplaces, faculty and administration spaces need and deserve attention. Because the wellbeing and efficiency of these teams and individuals are key to the success of the whole institution.





# Faculty + Administration Spaces

Faculty, educators and administrators work independently and collaboratively. It is essential to support their needs with spaces for focus work, meetings with colleagues and informal interactions.



This flexible solution offers various layers of privacy and accommodates different work modes.



This hard-working team space offers different options to focus, collaborate or share ideas.



More access to privacy is critical in the hybrid workplace. This collection of individual spaces supports focus work in a variety of postures.



This relaxed environment gives people opportunities to meet over lunch or coffee, reinforcing the sense of belonging.



This social space in the open offers a place for serendipitous encounters and informal connections.



Product Highlights



Steelcase  
Steelcase Series 1



Steelcase  
Migration SE



Steelcase  
Ottima Portico



Steelcase  
Steelcase Flex Active Frames Media Tower



# Gaming + Outdoor Spaces

Because learning can be intense, students need places where they can escape, take a break and re-energize. Gaming spaces and outdoor spaces can help.

Esports can be a magnet for students, encouraging interaction and involvement in campus life. Outdoor spaces provide a shared place for people to reset, find inspiration, and connect with nature. There are opportunities for schools to implement these spaces to support students' wellbeing and sense of belonging.





# Gaming + Outdoor Spaces

With more than 3 billion gamers worldwide, esports has skyrocketed during the past decade. Schools embracing esports can attract competitive gamers while also engaging students who might not otherwise participate in extracurricular activities. Interactions in a gaming space can help students learn new skills that go beyond the game and spark interest in new fields.

Outdoor spaces can become vibrant, multipurpose destinations, granting students choice and control over more places where they can drive their own learning and re-energize as they socialize.



Outdoor respite settings provide a place for people to relax and immerse themselves in nature.



Esports can positively impact learning experiences for students and help them succeed. High-performance seating and height-adjustable tables are key to a comfortable experience.



Gaming spaces should prioritize comfortable, supportive seating that adjusts to a range of users and postures, from laid-back to upright.



This community destination helps people find refuge and respite — a place to renew and care for their wellbeing.



Product Highlights



Viccarbe  
Season



Steelcase  
Gesture



Steelcase  
Steelcase Flex Height-Adjustable Desk



Viccarbe  
Burin



# Global Research + Insights

We're driven by students succeeding, which is why we make long-term investments in research and take the time to measure the impact of active learning on student outcomes. We use these outcomes as a means to drive continuous improvement.



## Evidence Based

As a company, we've invested more than \$110 million in research, design and development activities over the past three years. Steelcase employs 21 WorkSpace Futures researchers, strategists and workplace experts. Not only that, Steelcase Learning employs a dedicated research team that works with top educational institutions around the globe, conducting primary research, ethnographic research, prototyping, testing and more. Here are a few examples of the topics we researched:

### Workplace

- Hybrid Work
- Innovation
- Competition for Talent
- Agility
- Privacy
- Digital Transformation

### Education

- Student Success
- Personalized Learning
- Hybrid Learning
- Blended Learning
- Active Learning Classrooms
- Esports Spaces



## Human Centered

People are at the center of everything we do. Using empathetic observation, our researchers learn every day from teachers and students around the world. We use what we study, learn and measure to design innovative learning spaces and solutions.



## Future Focused

We take the insights gained from our observations and research and directly inform application and product design, building future-focused solutions. Here is the Ocular™ Table, a project co-designed and developed with Microsoft for the Microsoft Teams Front Row experience. The organic shapes allow everyone – whether in the room or elsewhere – to see, connect and meet better, making virtual meetings more inclusive.



# Customer Spaces

University of Glasgow (Glasgow, UK)  
Mazumdar-Shaw Advanced  
Research Centre (ARC)

How the ARC building at the University of  
Glasgow brings interdisciplinary research  
projects to life





# Customer Spaces

University of Glasgow (Glasgow, UK)  
James McCune Smith Learning Hub

A future-facing building responding  
to fast-changing needs





# Customer Spaces

## University Academy 92 (Manchester, UK)

A game-changing higher education experience designed to better prepare students for life and work in business, media & sport



## Coliseo Europea Student Residence (Madrid, Spain)

A combination of form and function and a rich sensory experience offer students a nest of creativity





# Customer Spaces

American International University (Al Jahra, Kuwait)  
A true American college experience in Kuwait



ESIC (Madrid, Spain)  
A Management school inspired by new ways of teaching, learning, and connecting



ICN (Nancy, France)  
New flexible learning spaces transform collaboration at ICN Business School

JOBLINGE (Frankfurt, Germany)  
An innovative learning space to help young people succeed





We're working to design better futures for the wellbeing of people and the planet.

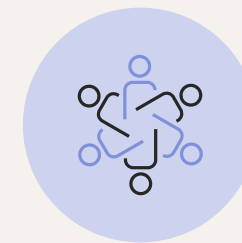
## Our Commitment to People and the Planet

Our choices focus on these significant areas of impact:



### HELP COMMUNITIES THRIVE

Our Better Futures Community partners on and funds social innovation programs to build equitable access to opportunity.



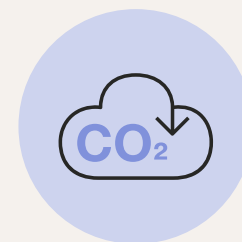
### FOSTER INCLUSION

We design spaces, tools and experiences that support our employees, partners and customers in feeling seen, heard and valued.



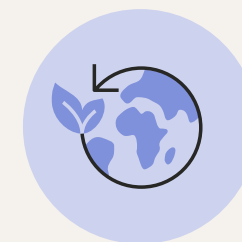
### ACT WITH INTEGRITY

We empower all our employees to represent our values, and are rigorous in how we implement policies that live up to our own ethics and goals.



### REDUCE OUR CARBON FOOTPRINT

We are working toward a net-zero future, meeting more ambitious climate goals at a greater global scale than anyone in our industry.



### DESIGN FOR CIRCULARITY

We implement reuse, repair, recycling and remanufacturing strategies across our product design and delivery process.



### CHOOSE + USE MATERIALS RESPONSIBLY

We source and select materials that are healthier for people and the planet and manage resources such as water and energy wisely.



# The Steelcase Difference

## Facts and figures

For over 100 years, Steelcase has helped create great experiences for the world’s leading organizations, across industries.

### EMEA

- 5 WorkLife Centers
- 5 Manufacturing facilities
- 2 Business Centers
- 1 Learning + Innovation Center
- 2 distribution centers

### GLOBAL

- 12,000 employees
- 15 manufacturing locations
- 770 dealers
- 4,000+ patents
- 110,000+ companies served in the last 5 years



## Industry-leading Warranty

No one in the industry offers a warranty as broad, deep and extensive as Steelcase.

## Trusted Dealer Partners

Our dealer partners provide in-depth research, quality products and reliable service. Our combination of expertise, ease and experience has made us a trusted, proven partner to leading organizations for decades.

Steelcase and our community of brands provide the broadest offering of solutions and services from the world’s most forward-thinking companies.





# Our Community of Brands

## Vanerum

Our mission is to create inspiring, flexible and functional spaces for learning environments. We believe that the environment plays an essential role in the intellectual, emotional and social development of individuals.

That's why we are committed to providing innovative, sustainable and aesthetic design solutions that encourage collaboration, creativity and development among students, teachers and professionals.



## Orangebox

At Orangebox, we believe truly great workspaces should remove barriers and bring people together. Our Smartworking™ furniture solutions respond to our ever-evolving workplace needs with UK designed and US manufactured furniture made to promote engagement, productivity, flexibility and flow so you can work wherever you want and however you choose.



## Viccarbe

An international reference in the manufacture of collaborative furniture, Viccarbe provides a collection from a blend of different cultures — the result of years collaborating with the most prestigious designers. Our aim is to inspire Mediterranean experiences through the design of timeless chairs, stools, armchairs, sofas, tables and accessories.





# Our Community of Brands

## Coalesse

Coalesse leads by bridging the worlds of residentially inspired aesthetic furniture and international, research-led product design. Through the work of the Coalesse Design Group, longstanding partnerships and influential collaborations, we create enduring modern furnishings for all the places where people connect and work. Today Coalesse brings a highly desired craft sensibility to the market at scale, helping designers and organizations make the new life of work better.



## BOLIA

For BOLIA, great design is not only what meets the eye, but just as importantly, how it is created – and the way it makes us feel. That is why BOLIA's collection is created by a brilliant community of designers from around the world. From brave new talents to world-renowned design studios – all with a shared passion for sustainable ideas, natural materials and New Scandinavian Design.



## Established & Sons

British brand Established & Sons is a leading platform for innovative, world-renowned design. Unique collections bring contemporary design solutions that respond to the evolving workplace.





# Notable Products from Our Portfolio

## Seating



Steelcase  
Brody



Orangebox  
Beyond the Desk



Orangebox  
Away from the Desk



Steelcase  
MN\_K



Vicarbe  
Last Minute Stool



Vanerum  
Grow



Vanerum  
Opti+ Move



Orangebox  
AllowMe



Orangebox  
Coze Workbooth



Steelcase  
Steelcase Karman®



Steelcase  
Steelcase Series 1



Steelcase  
Steelcase Series 2



Steelcase  
Eastside



Vanerum  
Seed Rocker Chair



Steelcase  
Node



Steelcase  
QiVi



Steelcase  
Please Air



Steelcase  
Think



Steelcase  
Steelcase Flex Perch



Vicarbe  
Klip Stool



Steelcase  
cobi



Vicarbe  
Klip Educational Chair



Orangebox  
Cubb



Orangebox  
Avi



# Notable Products from Our Portfolio



Orangebox  
**Acorn**



Orangebox  
**Cors**



Coalesse  
**Marien152**



Vicarbe  
**Season Chair**



Orangebox  
**Farne**



Orangebox  
**Ramsey**



Orangebox  
**Skomer**



Orangebox  
**Sully**



Vicarbe  
**Season Sofa**



Vicarbe  
**Season Bench**



Steelcase  
**B-Free Beam**



Steelcase  
**Turnstone Buoy**



Vicarbe  
**Common**

## Tables



Steelcase  
**Steelcase Flex Table**



Steelcase  
**Steelcase Flex Single Table**



Steelcase  
**Obelos®**



Steelcase  
**Migration SE**



Steelcase  
**Verb**



Steelcase  
**FlipTop Twin**



Steelcase  
**Lares Meeting Table**



Notable Products from Our Portfolio



Steelcase Customized Solutions  
MOL Project Table



Steelcase Customized Solutions  
Organic Living Table



Steelcase Customized Solutions  
Chubby Project Table



Steelcase Customized Solutions  
Organic Mobile Table



Vicarbe  
Solar



Orangebox  
Breaker

Storage



Steelcase Customized Solutions  
Move.Gather.Learn Table



Orangebox  
Allt



Vanerum  
Plant



Vicarbe  
Trestle



Steelcase  
Steelcase Flex Active  
Frames Media Tower



Steelcase  
Steelcase Flex Active Frames



Steelcase  
WorkValet™



Steelcase  
Universal Storage



Vicarbe  
Burin



Vanerum  
Daisy



Vanerum  
Opti+ Move



Vanerum  
Multiflex Kite



Steelcase  
Share It



Steelcase  
Universal Wardrobe



Steelcase  
Steelcase Flex Board Cart



Steelcase  
Steelcase Flex Team Cart



# Notable Products from Our Portfolio



Steelcase  
Implicit

## Space Division



Orangebox  
Campers & Dens



Steelcase  
Steelcase Flex Kiosk



Orangebox  
Coppice



Orangebox  
On the QT



Steelcase  
Steelcase Flex Acoustic Boundary



Steelcase Customized Solutions  
MN\_K Burger



Orangebox  
Border



Steelcase Customized Solutions  
Share It Tribuna

## Accessories



Steelcase  
Steelcase Flex Whiteboards



Steelcase  
Steelcase Flex Freestanding Screens



Steelcase  
Steelcase Flex Media Cart



Steelcase Customized Solutions  
Chubby Mobile Media Support



Orangebox  
Woods Mobile Planter



Steelcase  
Verb Whiteboards



Steelcase  
Steelcase Flex Power Stand



Steelcase  
Steelcase Flex Power Hanger

## Outdoor



Vicarbe  
Trestle



Vicarbe  
Solar



Vicarbe  
Burin



Vicarbe  
Season Bench



Notable Products from Our Portfolio



*Viccarbe*  
**Season Chair**



*Viccarbe*  
**Season Sofa**

**Steelcase**  
LEARNING



## Let's Get in Touch

The availability of the solutions showcased in this Brand Book may vary by market. For more information and validation, contact your Steelcase sales representative.

To find out more about our settings, solutions and capabilities, visit our [Steelcase Learning page](#).

Do you want to experience our spaces and solutions first hand? We will be delighted to welcome you to our [showrooms](#).

