

Steelcase Flex™ Active Frames Cabinets and Shelves

Steelcase

Steelcase Flex Active Frames are highly modular structures that shape space to your will. With a broad range of customizable configurations and technology integration, Active Frames provide shelter, privacy and space for teams to collaborate and do their best work in the hybrid workplace.



Applications



Flex Active Frames in a 5-high combined with a waterfall configuration creates shelter and privacy for this team space.



Flex Media Tower with table in a 5-high is integrated in a Flex Active Frames waterfall configuration promoting team collaboration in the open space. The adjacent Flex Active Frames work island hosts work tools and shared resources.



Flex Active Frames combined with a Media Tower in a 4-high with a table supports hybrid collaboration in an enclosed meeting room. The adjacent storage and the 1-high with a cushion provides space for personal belongings.



Flex Active Frames can be used on both sides for boundary and storage in the open. The Media Tower in a 4-high with an externally mounted monitor on one side supports impromptu hybrid collaboration.



This 5-high Flex Active Frames with privacy curtains, planters, a Media Cart, and whiteboards effectively divides space to create a welcoming creative studio that encourages open communication.



Together with the Flex Media Tower, Flex Active Frames in a 4-high flowing waterfall configuration encourages teams to connect in person or virtually. Ending in a curved bench, this hybrid hub provides a soft transition to the nearby lounge area.



Masterfully blending curved shelves and curtains, this Flex Active Frames in a 5-high creates a luxurious community space. The S-shaped configuration builds intriguing lounge nooks ideal for private conversations or a moment of respite.



Combining straight and curved elements with planters and curtains, Flex Active Frames in a 5-high can be used to build room-within-a-room settings ideal for group projects and learning activities.

Features + Options

FRAME
Consists of bases and tubes that provide the overall structure of the frame.

FIXED BOARD
Two sided fixed boards connect to the frame and are available in Whiteboard, PET/Whiteboard and Melamine.

SHELVES
Melamine shelves are installed to the frame through connectors, allowing for ease of reconfiguration.

INFILLS
Provide enclosure to the frame. Available in Melamine and PET.

MONITOR MOUNT
A technology-agnostic VESA mount allows to install monitors and technology.

POWER
Utility Power is provided and easily accessible behind a lockable door. Convenience Power is installed to the table through a clamp.

TABLE
An optional table is available in seated or standing height.

CABLE MANAGEMENT
Cut-outs in the shelves and base allow to drive cable to the power source. Technology can be safely stored behind a lockable door.

CUSHIONED BENCH
Curved 1-high shelves are available to create a cushioned bench.

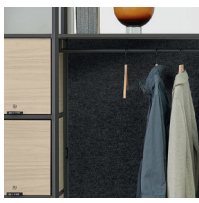
CURTAIN BEAMS & CURTAINS
Curtains are attached to the unit to enhance visual privacy or installed on curtain beams to provide a soft entrance point.

PLANTERS
Integrated planters provide a space for biophilia to be integrated into the frame.

CURVED SHELVES
Curved melamine shelves can be paired with straight shelves to build unique C- and S-shaped configurations.



Fabric Door Handle + Lock



Coat Rod



Mobile Board Clip



Cable Management Clip



Media Tower Cable Management



Bookends



Toolbox



Cushion



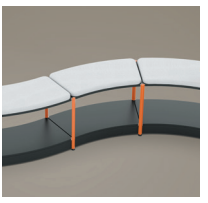
Curtain



Planter



Laptop Table



Bench

Statement of Line

These configurations are just a few ways that Active Frames can be built to support the workplace with both boundary and gathering attributes.



Waterfall



Flowing Waterfall



L-Shape



C-Shape



S-Shape



5-High



4-High



Passthrough



Curtained Boundary



5-High Media Tower (Internal Mount)



5-High Media Tower with Table (Internal Mount)



4-High Media Tower (Internal Mount)



4-High Media Tower with Table (Internal Mount)



5-High Media Tower (External Mount)



4-High Media Tower (External Mount)

Statement of Line

These configurations are just a few ways that Active Frames can be built to support the workplace with both boundary and gathering attributes.



Work Island



Work Bridge



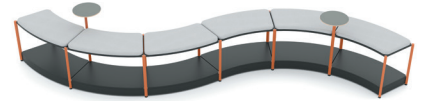
Low Boundary



End of Run



Campfire



Winding Lounge



1-High



1-High with Cushion

Surface Materials

Frame, Frame Extensions, Bookends, Coat Rod, Curtain Rail
Steelcase Standard Paints

Lock
Matt Chrome

Fixed Board
P631 Dark Heather Grey PET
Whiteboard
Melamine

Shelves, Doors and Media Tower Monitor Back Panel
Melamine

Mobile Board Clip and Cable Management Clip
6527 Merle

Cushion
Era or Atlantic

Infills and Media Tower Side Infills
Melamine
P631 Dark Heather Grey PET

Toolbox
P636 Light Heather Grey

Curtain
Light Grey: Air 4 - 203, Beige: Air 4 - 243, Dark Grey: Air 4 - 353

People + Planet

The modular design of Steelcase Flex Active Frames allows for easy reconfiguration and transformation, minimizing waste by reusing the existing structure and components. Just one simple tool is needed for assembly and disassembly, making it fast and easy to put together.

Flex Active Frames are shipped in a flat pack with optimized parcel logic with everything you need grouped together in one unit for easier installation. Flat boxes means more products ship at once, lowering carbon emissions. When you need to move it, you can take the pieces apart. When its useful life is over, easy disassembly means it's more likely to be recycled.

Steelcase Flex Active Frames have indoor air quality (IAQ) certification through Scientific Certification Systems Indoor Advantage™ Gold.

Availability and Manufacturing

Steelcase Flex Active Frames is manufactured in Stribro (Czech Republic), Madrid (Spain), Rosenheim (Germany) and Sarrebourg (France) by Steelcase for the EMEA market (Europe, Middle East and Africa).

Dimensions

Flex Active Frames Units (straight, organic, corner)

Height: 1H (517 mm), 2H (917 mm),
3H (1317 mm), 4H (1717 mm),
5H (2117 mm)

Width: 1W (~400 mm), 2W (~800 mm)

Depth: 1W (400 mm)

Media Tower Units

Height: 4H (1717 mm) or
5H (2117 mm)

Width: 4W (1600 mm)

Depth: 1W (400 mm)

Additional Product Materials



Webpage



3D-Models



Photo Collection

