

**eva**<sup>TM</sup>

responsible, innovative... beautiful

BS EN 1335-1 Dimensions  
BS EN 9241-5 Ergonomics  
FIRA Amendment A Spinal Training

570mm

{ 6.5° 13° 20° }

0.2kg	Fasteners	0.12kg	Fabric
0.15kg	Mesh	0.475kg	Seat Upholstery Plate
0.25kg	Mesh Plate	0.6kg	Seat Foam
0.85kg	Back Frame	1.15kg	Seat Assembly
0.7kg	Left Hand Arm	1.9kg	Aluminium Back Yoke
0.7kg	Right Hand Arm	2.44kg	Mechanism
		1 2.6kg	Caster



orangebox



***eva***<sup>TM</sup>

responsible, innovative... beautiful

[ The most efficient combination of  
materials and design thinking we've  
ever put into a task chair. ]

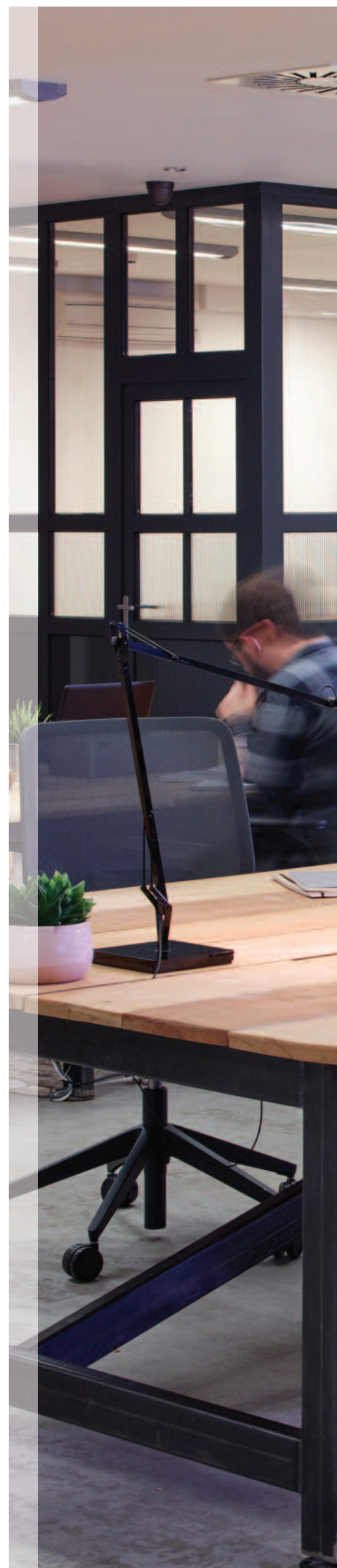


# THE WORKPLACE IS CONSTANTLY changing.

Fewer dedicated workstations and more shared collaborative workspaces means the way we work is evolving from sitting in one chair at a desk all day every day to working across multiple locations in shorter bursts.

At the same time, the demographics of the office environment are broader than ever before. The workplace has a significant role to play in improving the health, happiness and productivity of all employees, and can hold the key to attracting and retaining a talented workforce.

By investing in the right product, companies can express the value they place on their people – the most important asset of any organisation.













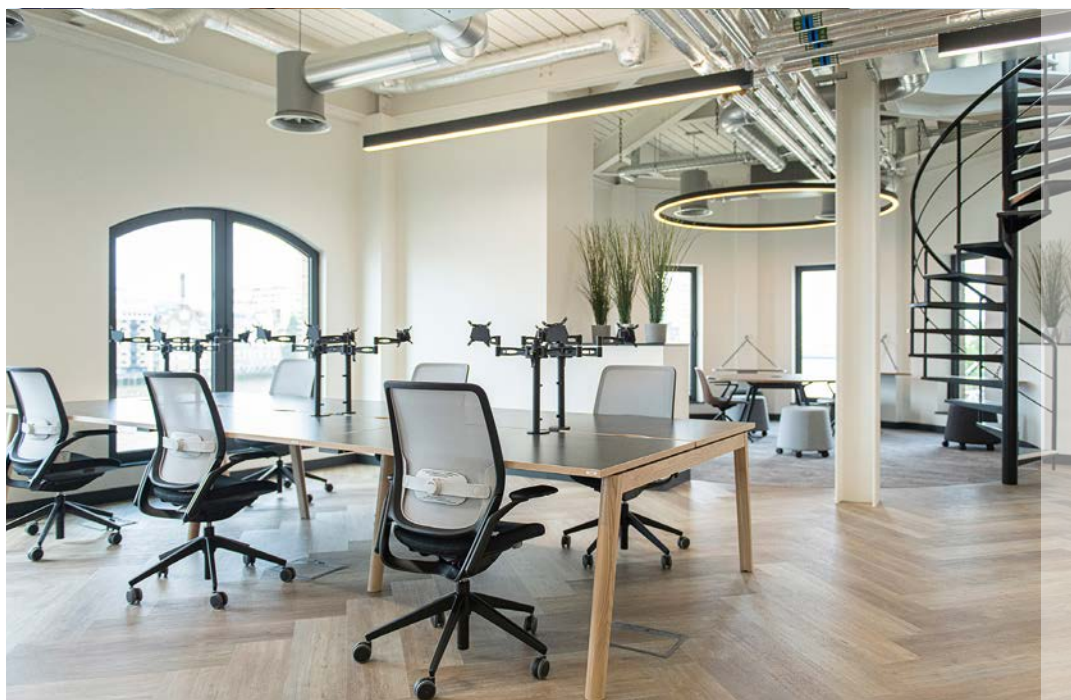




Our latest task chair,

**eva**<sup>TM</sup>, places greater emphasis on user experience and comfort while upholding our commitment to leading by example in environmentally responsible product design and manufacture.

Our design approach adapts to changes in the workplace. Our new generation of 'light touch' task seating is simpler to set up and in need of fewer adjustments. In fact, we let the chair make many of the adjustments itself.







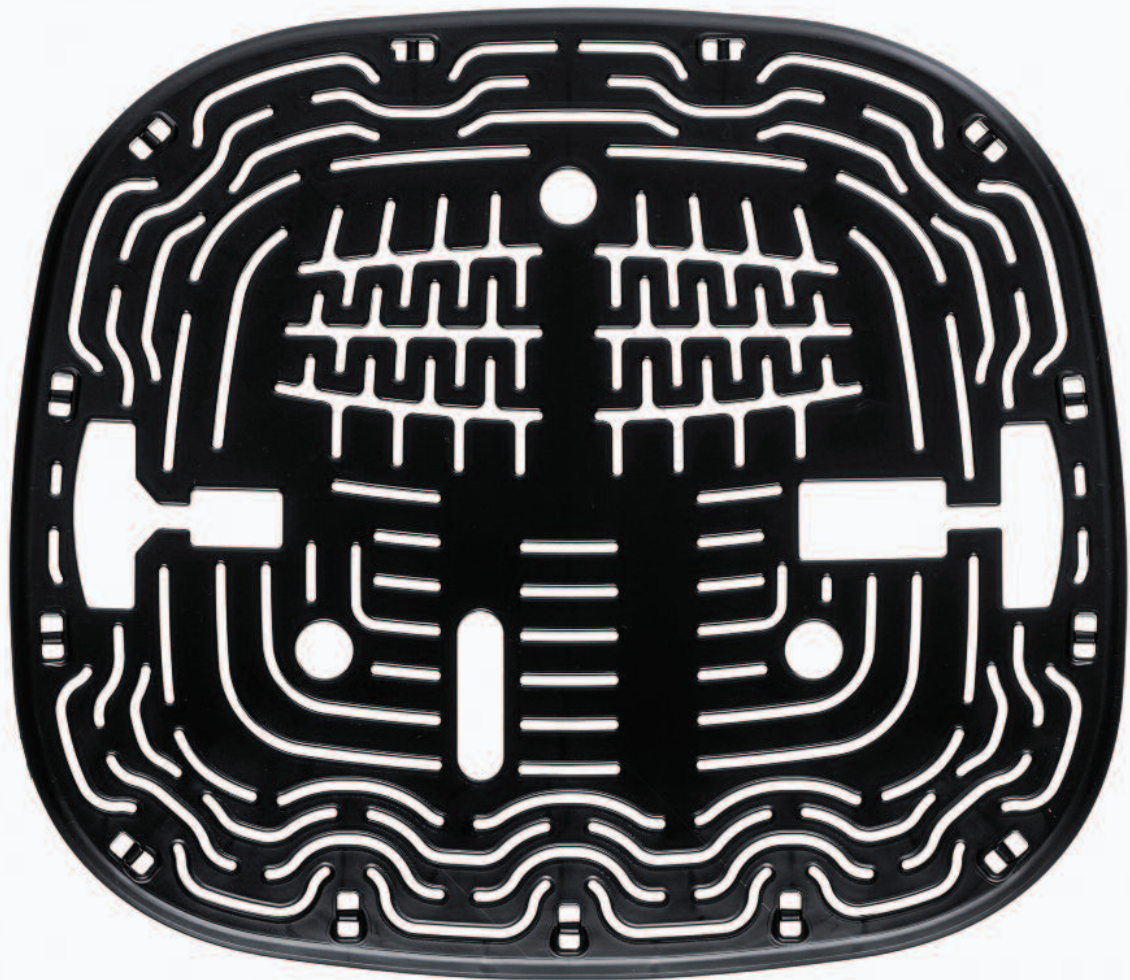
A self-weighting mechanism intelligently responds to a user's body weight, automatically providing the right amount of resistance as the user reclines in the chair. **No adjustment necessary.**

The optional travel limiter means the chair can be locked in the upright position, or, for a more personalised set up, be set at three different angles of recline.

Refining the chair to just a few controls has allowed us to focus on maximising the range of adjustment it offers. As a result, **eva** caters for a larger percentage of user demographic, and is also compatible with increasing popular height adjustable desking.







**Eva's** carefully contoured seat and back provide immediate comfort the moment you sit down.

The slim seat belies the level of comfort it offers. It not only feels great the moment you sit on it, it also delivers lasting comfort whether you're sitting down for half an hour or a whole day.

**Eva's** discreet dual zone seat profile – with 7° downward sloping front-third – ensures freedom of movement for the legs, preventing pressure on the thighs and increasing blood circulation.



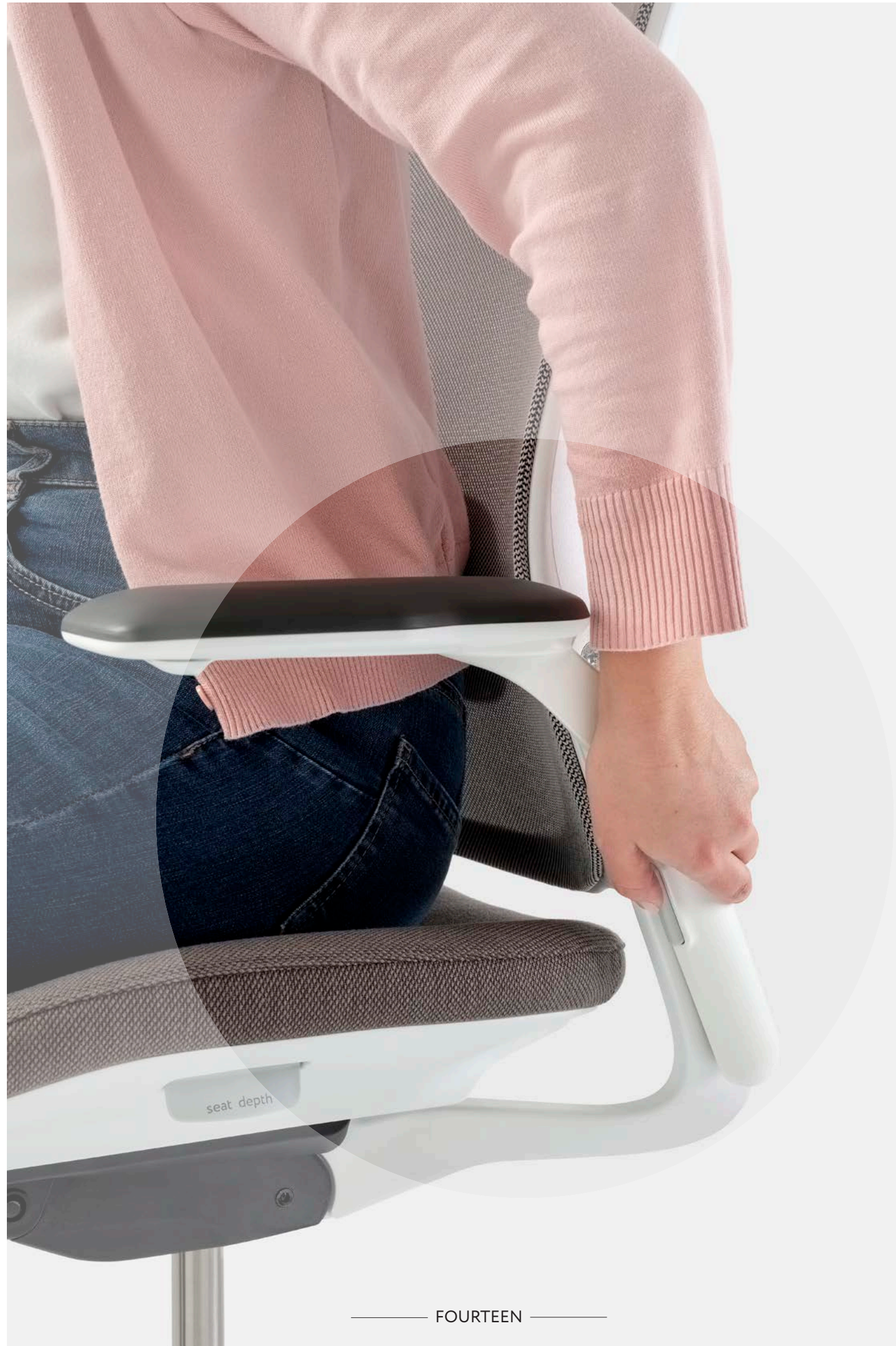














# 100mm



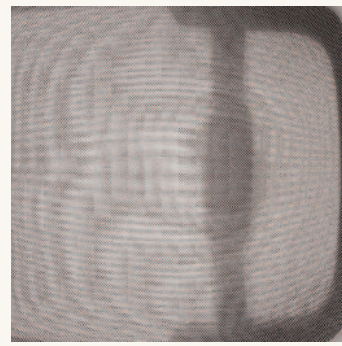
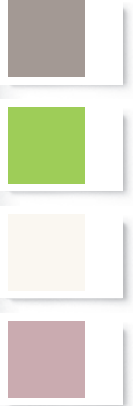
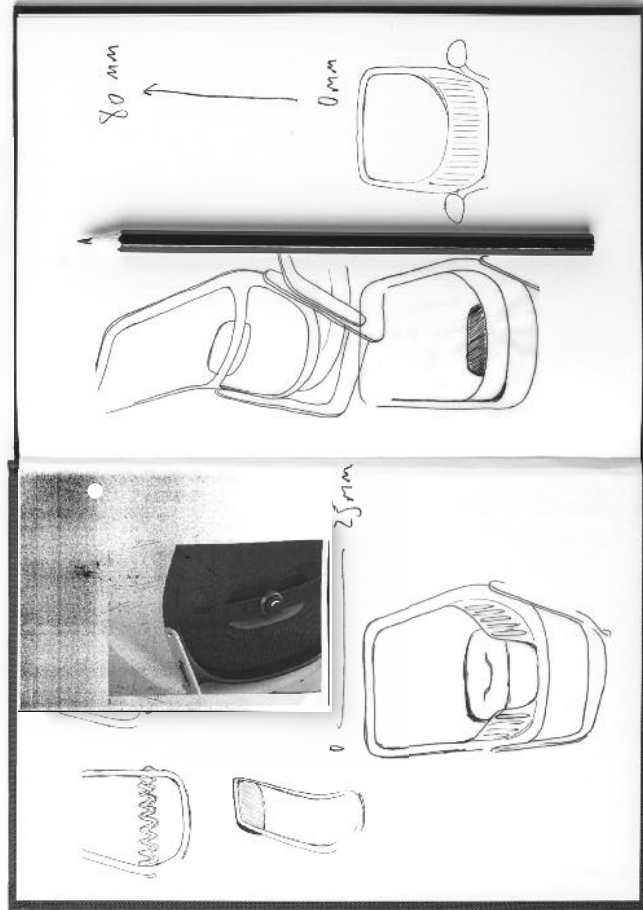
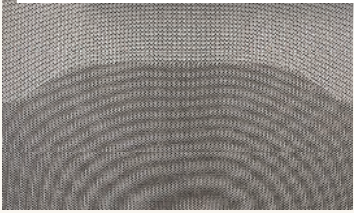
ARM HEIGHT ADJUSTMENT

Our obsession with simplifying eva down to just the absolute essentials has resulted in a task chair made of very few, very precisely engineered parts.

No part exemplifies this more than eva's elegant armrests.

100mm of button controlled height adjustability and our signature rotating soft-touch armpads make these the most functional armrests that we offer as standard.





**Eva's** backrest takes a well-established mesh manufacturing process – knitting – and optimises it to get the most function we can possibly get out of a single component.

By exploiting the limitless possibilities of knitted fabric we've been able to develop back rest support that combines exceptional comfort with smart design for manufacture and sustainable performance.

**Eva** provides effective lumbar support whether you choose mesh-integrated or optional adjustable height & depth lumbar support.







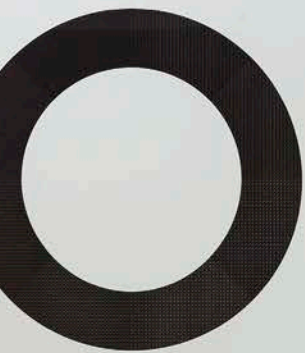


By knitting the mesh with intelligent yarns uniquely organised into 5 ZONES OF VARYING TENSION, the backrest delivers exceptional comfort.

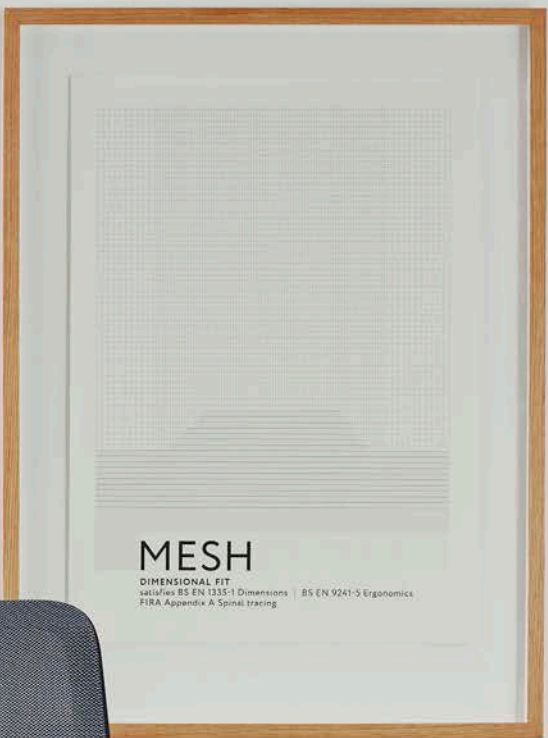
The curvaceous mesh profile of the upper zones provides great back contact, whilst the intuitive lumbar support of the lower zones helps maintain healthy lordosis of the spine, regardless of user weight and stature – with no adjustment necessary.

With zero waste in the knitting process and its single-polymer construction, this is the most effective combination of materials and design thinking we have ever developed for a mesh chair.





zero waste



## MESH

DIMENSIONAL FIT  
satisfies BS EN 1335-1 Dimensions | BS EN 9241-5 Ergonomics  
FIRA Appendix A Spinal tracing





**Eva's** optional air-cell lumbar offers adjustable support for a more personalised set-up.

The fixed volume air cell uses air displacement to maintain optimum support and constant lumbar contact as the user moves in the chair.

With 80mm of height adjustment and 20mm of depth adjustment available at the turn of a dial, the air cell lumbar provides individualised adjustment for a wide user group.

LUMBAR DEPTH  
ADJUSTMENT

○ → 20<sub>mm</sub>

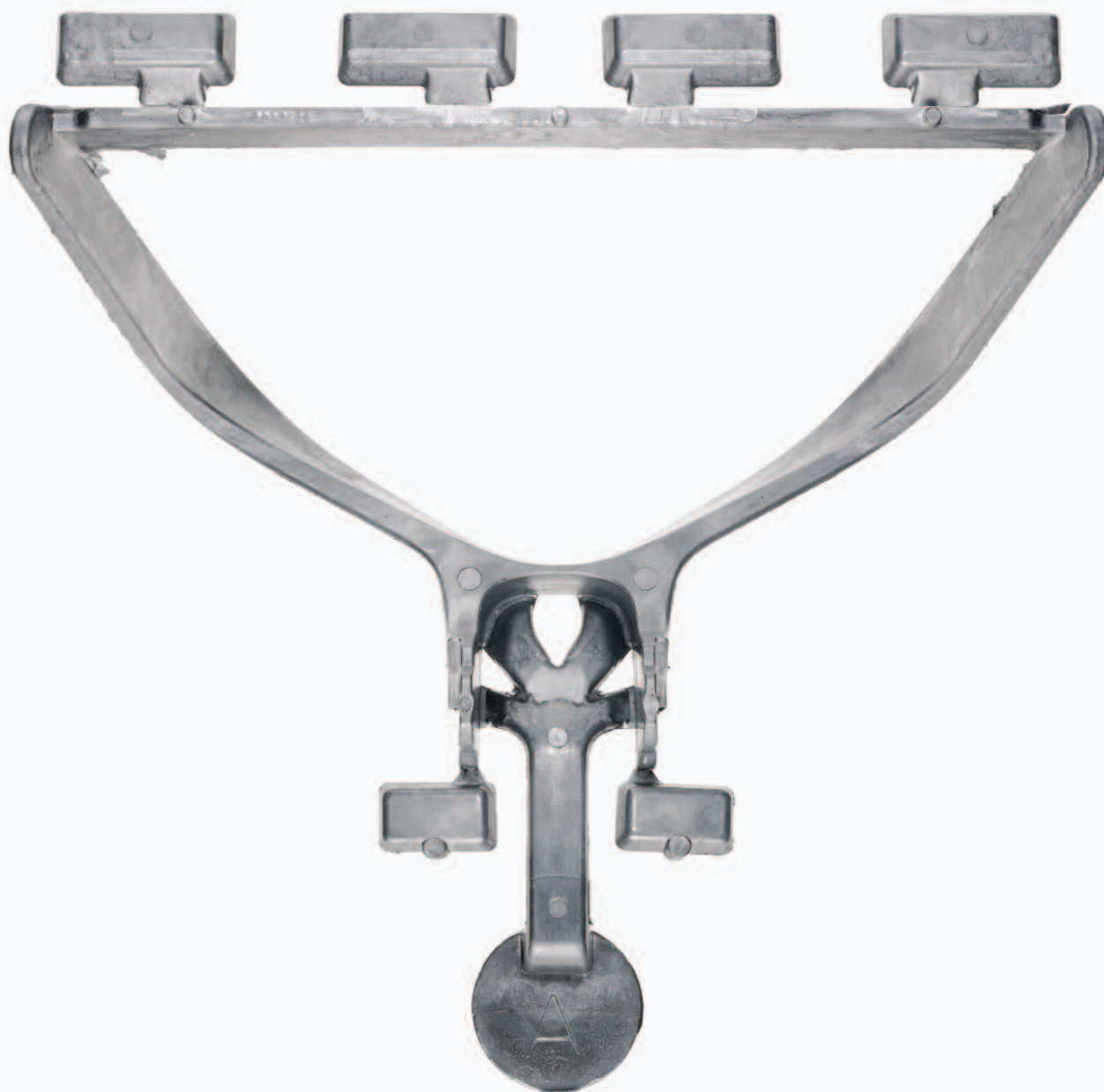


LUMBAR HEIGHT ADJUSTMENT

80<sub>mm</sub>







Every design decision we make is based upon getting the most out of our chosen materials.

By using materials with well-established closed-loop usage cycles, and maximising the potential for the recycling of all materials through intelligent design, we've been able to increase the overall resource efficiency of **eva**.

Using more aluminium components has created a task chair that's light in appearance, but strong enough to withstand a lifetime of use.



A



B



C



D

A. Polished | B. Industrial Silver | C. White | D. Black

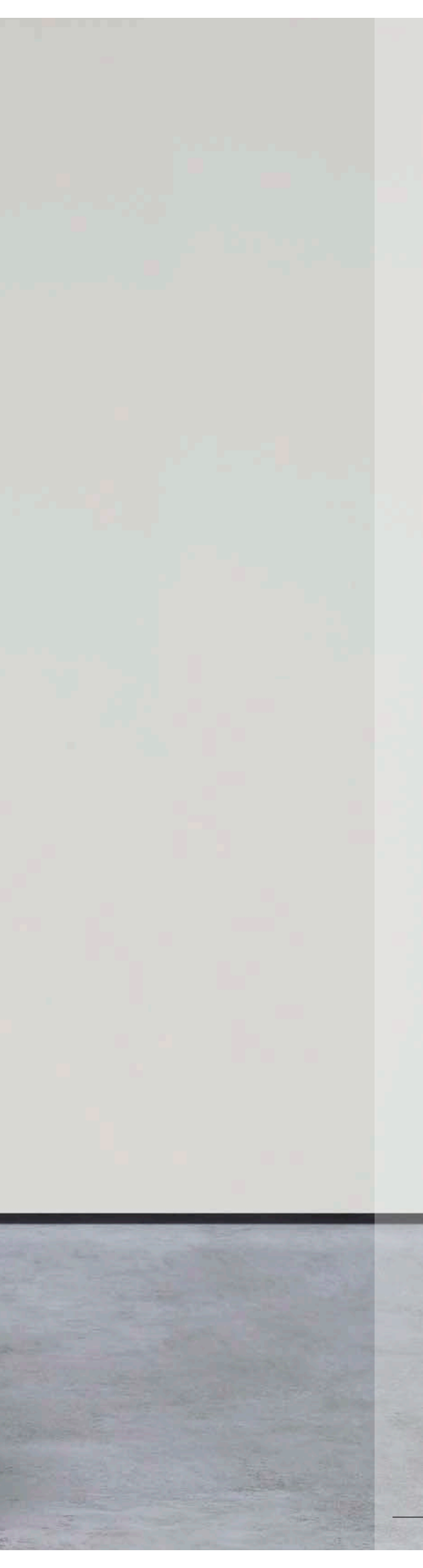


Our lightest ever task chair

- o.2<sup>1/8</sup> Fasteners
- o.15<sup>1/8</sup> Mesh
- o.25<sup>1/8</sup> Mesh Plate
- o.85<sup>1/8</sup> Back Frame
- o.7<sup>1/8</sup> Left Hand Arm
- o.7<sup>1/8</sup> Right Hand Arm
- o.12<sup>1/8</sup> Fabric
- o.475<sup>1/8</sup> Seat Upholstery Plate
- o.6<sup>1/8</sup> Seat Foam
- 1.15<sup>1/8</sup> Seat Assembly
- 1.9<sup>1/8</sup> Aluminium Back Yoke
- 2.44<sup>1/8</sup> Mechanism
- 1.35<sup>1/8</sup> Gaslift
- 2.64<sup>1/8</sup> 5 Star Base
- o.62<sup>1/8</sup> Castors

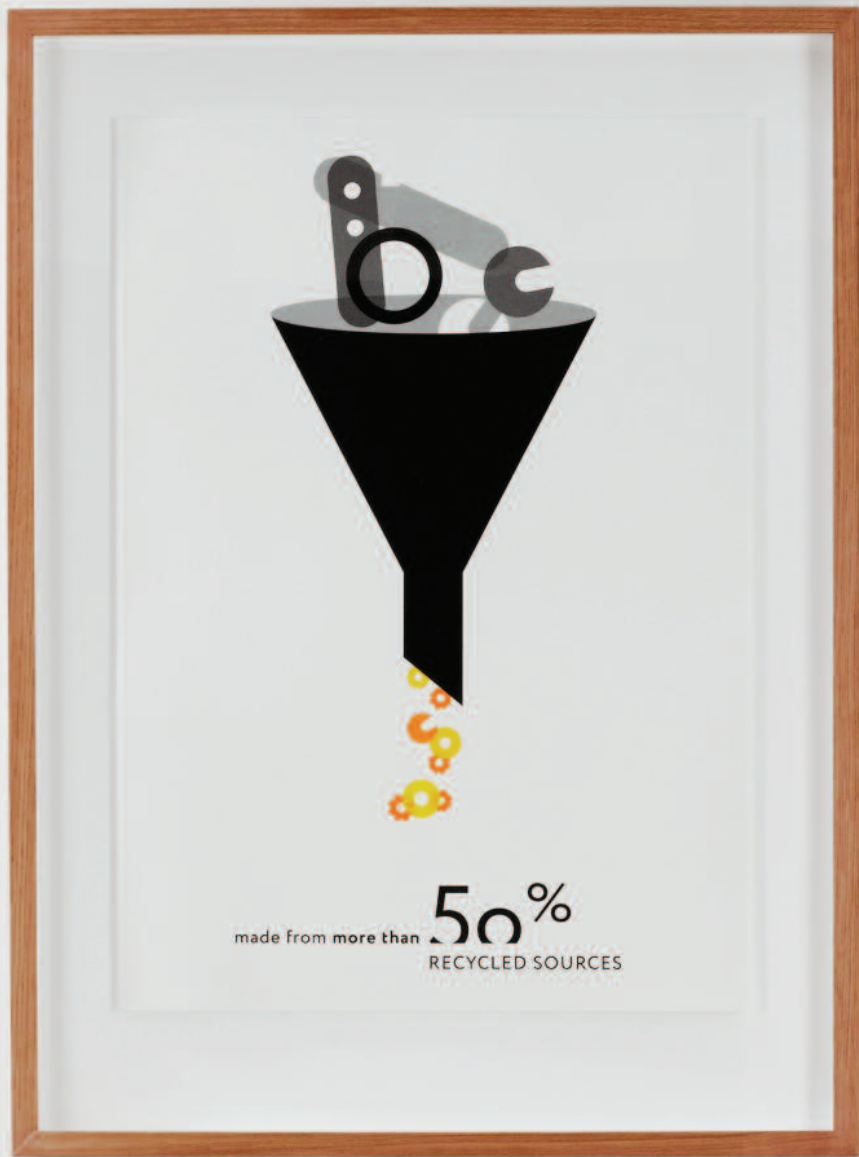
14<sup>kg</sup>





Despite being made from nearly two thirds aluminium & steel, this is our lightest task chair yet, tipping the scales at just a little over 14kg.







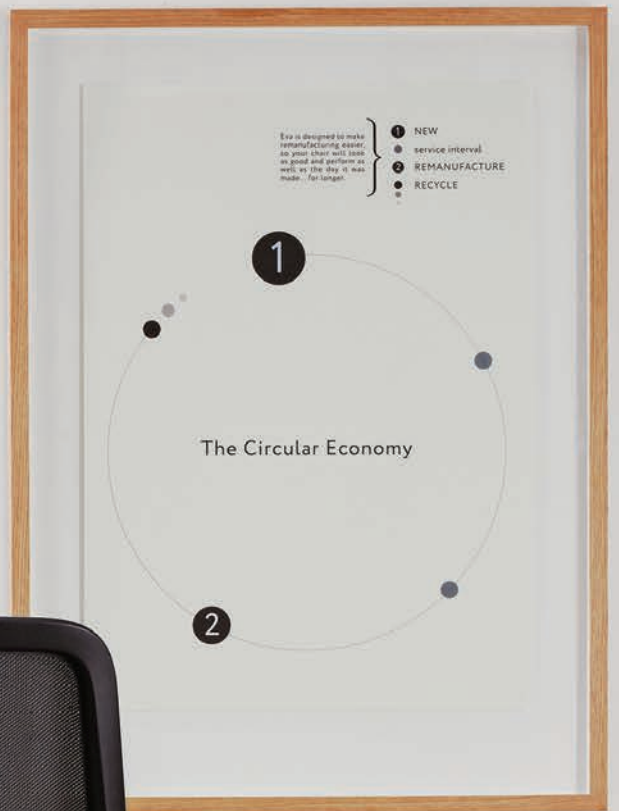


Not all components are created equal, and some have longer lifecycles than others. We use design to close that gap wherever possible, ensuring that any components likely to wear more quickly can be easily repaired or replaced.

That's why, from day one, **eva** is covered by the most comprehensive service package we've ever developed for a task chair. This means your chair can stay looking good and performing as well as the day it was made...for longer.

And, at the end of its first life, we can remanufacture your chair to give it a second one.

Only when it's reached the end of its serviceable life will we disassemble it and recycle its components, closing the materials loop.





# eva™

responsible, innovative... beautiful



Eva - HB



Eva - HBA

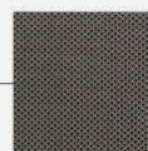


## Plastic trim Back frame & seat

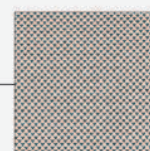
## Mesh



Black



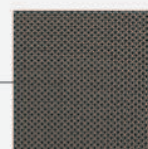
Carbon



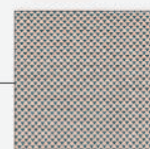
Ash



White



Carbon



Ash

### Please note:

Soft touch arm pads available in black only.

Headrest upholstery is matched to the seat fabric.

Adjustable lumbar & coathanger are colour matched to the plastic trim colour.

## Standard product specification

65mm hard wheel castor

26.5" industrial silver powder coated base

Brushed chrome gaslift

Weight balancing synchronous mechanism

Knitted mesh with integral lumbar support

## Options

65mm soft-tyre castor

Textured black, textured white powder coated or polished base

3 position travel limiter & back lock (locks in the upright position only)

Adjustable lumbar (height & depth)

Coat hanger

## Vital statistics

User weight range: 50 - 150kg

Seat height (task): 420 - 570mm

Seat height (counter): 660 - 920mm

Seat depth adjustment: 76mm

Seat cushion width: 515mm

Seat cushion depth: 470mm

Effective seat depth: 400 - 476mm (lumbar point to front of seat)

Mesh: Self-supporting multi-density mesh provides lumbar support

Additional lumbar: Height adjustable 80mm, depth adjustable 25mm

Arm height adjustment: 100mm

Arm rotation: 15° inward & 170° outward rotation (with auto safety lock in the forward position)



Eva - HBH



Eva - HBCA



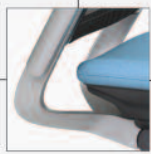
Eva - HBA



Eva - HBCA

### Aluminium trim Yoke & arm supports

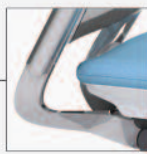
### Base



Industrial silver



Black



Polished



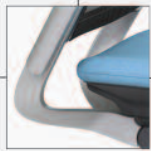
Industrial silver



Black



Polished



Industrial silver



White



Polished



Industrial silver



White



Polished

## Standards & Testing

Designed to conform to the British, European & U.S. standards:

### BS EN 1335 - 1: 2000

Part 1 - Dimensions, determination of dimensions  
Part 2 - Safety requirements  
Part 3 - Test methods

### BS EN ISO 9241-5:1999

Ergonomic requirements for office work with visual display terminals (VDT's) Workstation layout and postural requirements.

### BS 5459 - 2 : 2000

Specification for Performance Requirements and Tests for Office Furniture.

### ANSI / BIFMA X5.1 – 2002

American National Standard for Office Furniture.

### BIFMA G1 – 2002

Ergonomics Guideline for Visual Display Terminal Furniture used in Office Spaces.





Our policy of local sourcing whenever possible helps us to minimise product miles and reduce **eva's** environmental impact.

By simplifying **eva's** design and assembly, we are able to supply chairs partially assembled, significantly reducing volume in specially designed boxes, reducing both transportation impact and delivery costs.





**Orangebox Smartworking® London**

38 Northampton Road,  
London EC1R 0HU, United Kingdom.  
T. +44 (0)20 7837 9922  
email. smartworkinglondon@orangebox.com

**Orangebox Smartworking® Huddersfield**

Bates Mill, Colne Road,  
Huddersfield HD1 3AG, United Kingdom.  
T. +44 (0)1484 536 400  
email. smartworkinghuddersfield@orangebox.com

**Head Office & Manufacturing**

Orangebox Limited, Parc Nantgarw,  
Cardiff CF15 7QU, United Kingdom.  
T. +44 (0) 1443 816 604  
email. sales@orangebox.com

**Orangebox Smartworking® Dubai**

Dubai Design District, Building 3 Office  
504, PO Box 333016, Dubai, UAE.  
T: +971 (0)4770 7900  
email. smartworkingdubai@orangebox.com

**Orangebox Smartworking® New York**

320 5th Avenue, Suite 600,  
New York, NY 10001  
email. nyc@orangebox.com

**[www.orangebox.com](http://www.orangebox.com)**