



Joy

Displaying the technical attributes of more expensive task chairs

orangebox

Product Description

Joy's deceptive simplicity is the result of ergonomic research. Joy offers users a level of comfort and performance previously unimaginable in this class of product, and, thanks to its unique form, contours and proportions, this holds true regardless of the user's body shape and size.

When specified in the Camira Oxygen Fabric, Joy can be offset against carbon, saving equivalent carbon to that generated in the production of the chair through investment in sustainable energy projects. This makes it a Climate Neutral product (in association with Climate Care).

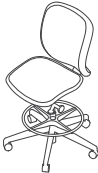


Image JOY-02



Image JOY-01 | JOY-02

Product Range

JOY-01 Swivel chair	JOY-02 Swivel armchair	JOY-03 Counter chair	JOY-04 Counter armchair	JOY-09 Highback swivel chair	JOY-10 Highback swivel armchair
					
H930 [H37] W660 [W26] D630 [D25] SD440 [SD17] SH430-565 [SH17-22]	H930 [H37] W660 [W26] D630 [D25] SD440 [SD17] SH430-565 [SH17-22]	H1050 [H41] W660 [W26] D630 [D25] SD440 [SD17] SH660-920 [SH26-36]	H1050 [H41] W660 [W26] D630 [D25] SD440 [SD17] SH660-920 [SH26-36]	H1050 [H40] W660 [W26] D630 [D25] SD440 [SD17] SH430-565 [SH17-22]	H1050 [H40] W660 [W26] D630 [D25] SD440 [SD17] SH430-565 [SH17-22]

JOY-OH Highback swivel task chair	JOY-OHA Highback swivel task armchair with adj. arms
	
H1050 [H40] W660 [W26] D630 [D25] SD440 [SD17] SH430-565 [SH17-22]	H1050 [H40] W660 [W26] D630 [D25] SD440 [SD17] SH430-565 [SH17-22]

mm["

SH - Seat Height — SD - Seat Depth



Image JOY-03 & 04

Product Specification

Standard Product Description

Castors: 50mm Black Castor as standard. Castors fitted to an Aluminium base will be 65mm as standard.

Glides: Glides fitted as standard on counter height chairs. (03 or 04)

Base: Black Nylon base as standard.

Seat: Fixed seat as standard.

Upholstery: Standard Upholstery.

Arms: Standard Arms available. (02, 04, 10)
2D adjustable arms with fixed pads are standard on swivel armchairs. Black PU armpads.

Shell: The seat shell is plain as standard.

N.B Sliding armpads only available when width adjustable arms are selected.

Optional Upcharges

Castors: 65mm Black Castors (nylon base only) or Soft Non Break Castors.

Glides: Available as an upcharge. (01, 02, 09, 10)

Base: Industrial Silver Aluminium Base or Polished Aluminium Base.

Seat: Sliding Seat available. Coccyx Cutout available as an upcharge.

Upholstery: Two Tone Upholstery, Luxury Upholstery, Upholstered Back Shell (fabric only).
If vinyl upholstery is required, the luxury upholstery upcharge will be incurred.

Arms: Black PU Armpads, Sliding Armpads or Width Adjustable Arms. (02, 04)

Coat Hanger: Finished in Industrial Silver, Black or Chrome. (09, 10)

Lumbar Support:
Integral Inflatable Lumbar Support. (09,10)
JOU-LITELS Lumbar Vest (black airspace fabric only). (01, 02, 03, 04)
JOYHB-LITLES Lumbar Vest (with inflatable lumbar). (09, 10)
JOY-MESH-LP Joy Lumbar Pad. (01, 02, 03, 04, 09, 10)

Product Certification

Intertek Sustainability Clean Air Product Certification
Clean Air certification provides proof that products have been independently tested and found to conform to VOC standards and to the ANSI/ BIFMA Furniture Emissions Standards. All Orangebox products* have achieved Gold certification, excluding laminate products which achieve a silver certification.
*With the exception of Fielding Tables.

BS 5459-2:2000
Structurally suitable and sufficiently stable for use as an office work chair.

BS 5459-2:2000+A2:2008
Structurally suitable and sufficiently stable for use as an office work chair.

BS 1335-3: 2000
Structurally suitable and sufficiently stable for use as an office work chair.

Product Finishes

Castors

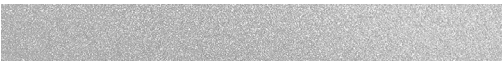


Black

Base



Black



Industrial Silver



Polished

Arms



Black

Coat Hanger



Industrial Silver



Black



Polished