

Back to the Office Solutions  
(B2O)



Steelcase



8  
**Retrofitting Shields**

10  
**Modular Shields**

12  
**Counter Shields**

14  
**Pop-Up Shields**

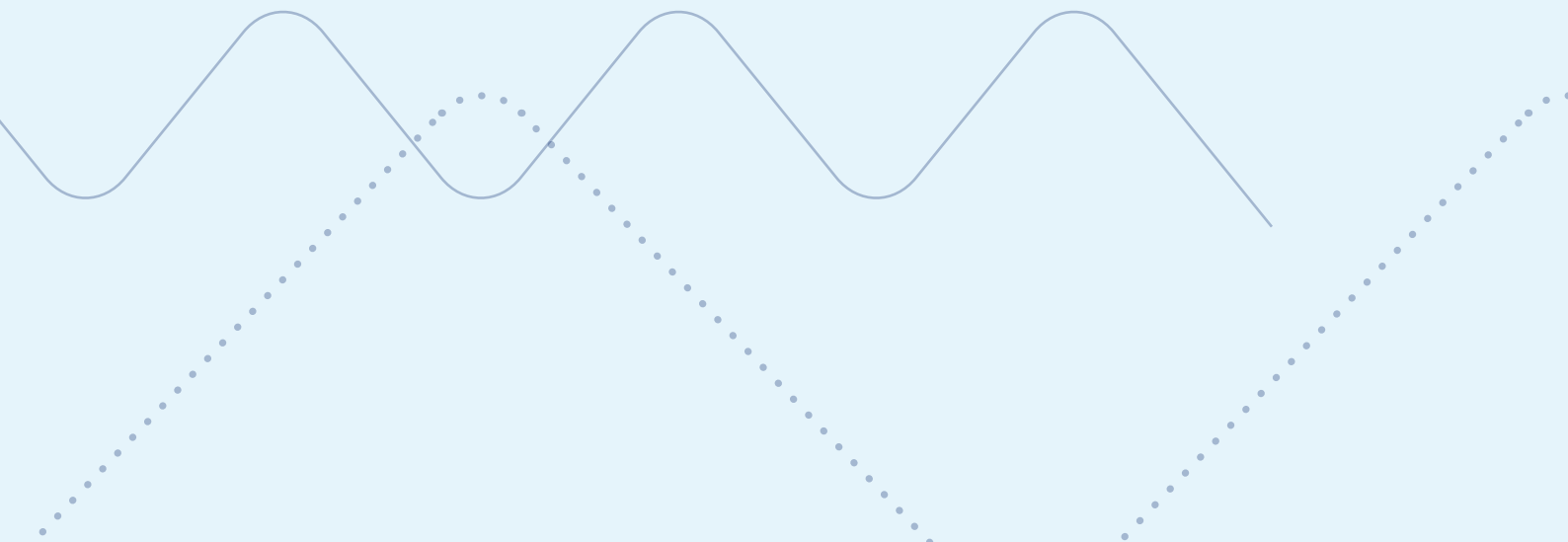
16  
**Partito Protective**

18  
**Unframed Shields**

20  
**Divisio Name Tag**

22  
**PPE Dispensers**









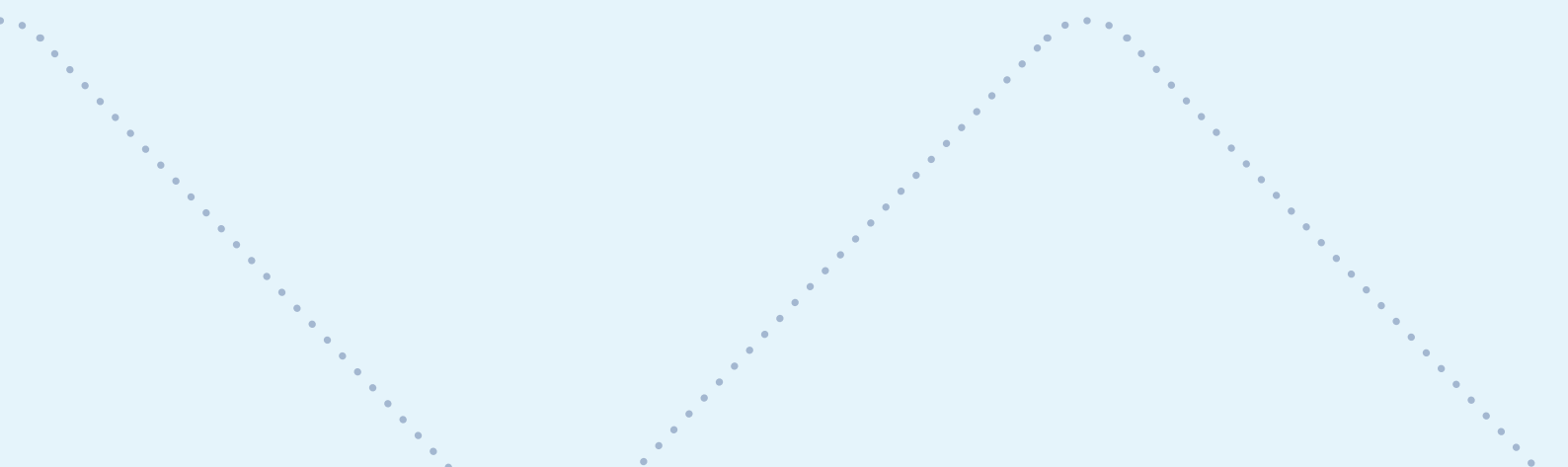
# Back to the Office Solutions (B2O)

**Now more than ever, the workplace plays an essential role in employee wellbeing.**

And while physical safety is of the utmost importance, it is as vital to ensure that people feel safe so they can perform. By integrating safety needs into the design of compelling spaces, organisations can create warm and welcoming workplaces that make people excited to return.

An essential part of creating a compelling and safe workplace is retrofitting existing solutions based on a common-sense approach that adheres to governmental and global health guidelines, including physical distancing, adding barriers, cleaning and safety measures.

The addition of Back to the Office Solutions (B2O) to existing spaces is especially important to create new divisions when the minimum required distance between employees cannot be achieved. Companies can adapt the office, with short-term solutions that require minimum investment, to welcome people back to a compelling and safe workplace.



# Category Overview

## Retrofitting Shields

Light and easy to install, the retrofitting extensions provide an immediate and low-investment solution for additional protection at the workstation by leveraging existing space-division elements on desks and benches.

## Desk Shields

Easy and quick to integrate into different workspaces, the Desk Shields provide the desired level of protection with a variety of applications and materials.

## Freestanding Shields

Movable and easy to clean, the Freestanding Shields provide structure to any environment while supporting the protection of personal space.

## Accessories

Small details can make a great difference. Dispensers allow employees and visitors to access personal protective equipment such as masks, gloves or sanitizers. Name tags help to signal whether a workstation is occupied or clean and ready to use.



Retrofitting Shields





Desk Shields



Accessories



Freestanding Shields

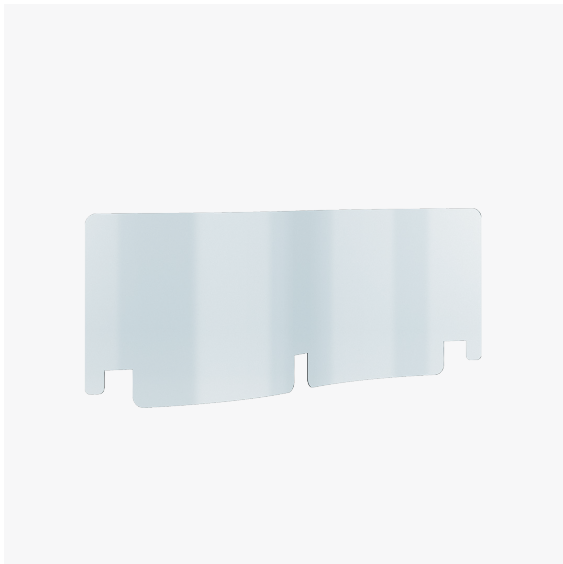






## Retrofitting Shields

Retrofitting Shields are extensions that can be easily integrated on existing screens or rail solutions. Ready in under a minute, they provide the ideal solution for an immediate adaptation of office workstations.



### *Retrofitting Shield – Polycarbonate*

Dimensions

Width: 1400, 1600, 1800 mm

Height: 407 mm

Depth: 2 mm





## Modular Shields

Modular Shields can be easily placed on different types of workstations, making them a practical solution for both privacy and protection. Play with the transparency of polycarbonate to ensure social distancing while bringing a fresh design into the workplace.



*Modular Shield – Polycarbonate*

Dimensions

Width: 1000 mm

Height: 807 mm

Depth: 4 mm



Stoppers





## Counter Shields

Counter Shields support retail businesses and client-facing areas during day-to-day routines. These transparent shields support safe interactions, while ensuring full visibility. Choose the best option for your work environment: the fixed option provides stability while the movable version allows for an immediate reconfiguration, with no assembly required.



### *Counter Shield*

#### Dimensions

Width: 800, 1000, 1200, 1400 mm

Height: 800 mm

Depth: 2 mm



### *Fixed Counter Shield*

#### Dimensions

Width: 800, 1000, 1200, 1400 mm

Height: 800 mm

Depth: 2 mm



## Pop-Up Shields

Pop-Up Shields are separations that can be placed on the side or front of desks, benches and meeting tables.



*Pop-Up Shield – Lateral (Polycarbonate)*

Dimensions  
Width: 1000 mm  
Height: 600 mm



*Pop-Up Shield – Frontal (Polycarbonate)*

Dimensions  
Width: 1200, 1400 mm  
Height: 600 mm





## Partito Protective

Partito Protective are freestanding screens that bring structure to any environment while encouraging people to keep a safe social distance. These screens suit healthcare environments, as well as offices and retail businesses, or any space where physical separation is needed.



*Partito Protective*  
Dimensions  
Width: 900, 1200 mm  
Height: 1887 mm



*Partito Protective with Cut Out*  
Dimensions  
Width: 900, 1200 mm  
Height: 1887 mm







## Unframed Shields

Unframed Shields are freestanding screens that blend seamlessly in the work environment and help to create space division without disruption. Thin and transparent, the screen is sustained by a metal base and a bent design that allows for extra stability.



*Unframed Shield (Polycarbonate)*

Dimensions

Width: 1000 mm

Height: 1500 mm

Depth: 2 mm



## Divisio Name Tag

Divisio Name Tag is a simple accessory that can be placed on top of desk screens, chairs and storage. It provides an intuitive and immediate way to signal if a workstation or storage element is used to avoid usage by multiple individuals, thus decreasing the probability of contamination.









## PPE Dispensers

These metal freestanding structures make protective and hygiene tools available in the office and other environments. Allow employees and visitors to have immediate access to Personal Protective Equipment (PPE) such as masks, gloves, sanitizer and tissues. The Recycling Dispenser provides storage and a recycling bin, while the Display Dispenser offers signage for safety instructions or informative posters.



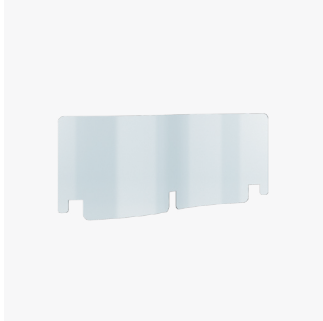
*Recycling Dispenser*  
Width: 350 mm  
Height: 1000 mm  
Depth: 250 mm



*Display Dispenser*  
Width: 350 mm  
Height: 850 mm  
Depth: 200 mm

## Back to the Office Solutions (B2O)

### Retrofitting Shields



**Retrofitting Shield**

### Desk Shields



**Modular Shield**



**Pop-Up Shield**



**Counter Shield**

### Freestanding Shields



**Partito Protective**



**Unframed Shield**

### Accessories



**Recycling Dispenser**



**Display Dispenser**



**Divisio Name Tag**



Polycarbonate

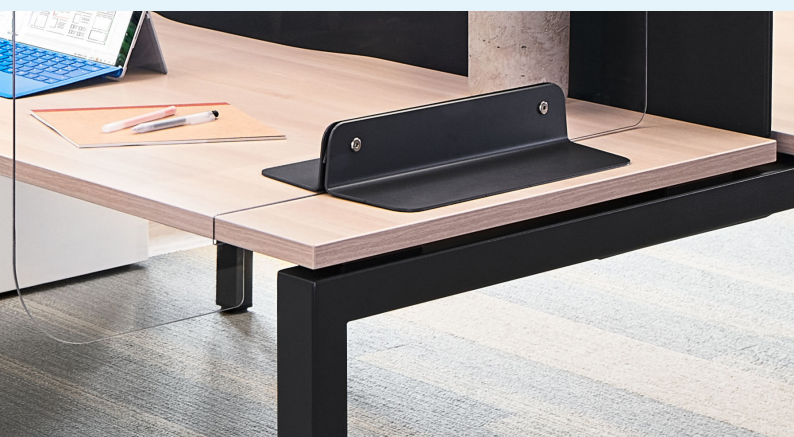
# Surface Materials

## Polycarbonate

Transparent, light and easy to clean, polycarbonate is the best ally to create social distancing without disrupting communication, collaboration and social interactions.

## Steel

Steel is a versatile material that can give a special touch to any product. Accessories and product parts in steel can be ordered in different Steelcase standard metal paints (conditions apply).



Steel



# Get in Touch

To find out more about new solutions for new ways of working, visit [Steelcase.com](https://steelcase.com)

---

## Meet us:

### Learning + Innovation Centers






Grand Rapids  
Munich

### WorkLife Centers

Atlanta  
Boston  
Chicago  
Dallas  
London  
Los Angeles  
Mexico City  
New York  
Paris  
San Francisco  
Toronto  
Washington DC

---

## Connect with us:

-  [instagram.com/steelcase](https://www.instagram.com/steelcase)
-  [pinterest.com/steelcase](https://www.pinterest.com/steelcase)
-  [facebook.com/steelcase](https://www.facebook.com/steelcase)
-  [twitter.com/steelcase](https://twitter.com/steelcase)
-  [linkedin.com/company/steelcase](https://www.linkedin.com/company/steelcase)

---

The Steelcase family of brands including Steelcase®, Coalesse®, DesignTex®, Turnstone®, Smith System®, Orangebox® and AMQ® and trademarks are the property of Steelcase Inc. or their respective owners. Third party brands and trademarks are the property of their respective owners.



The background is a solid light blue color. It features several decorative elements: a large, faint, light blue wavy line that spans across the upper half of the page; a smaller, similar wavy line in the lower right; a series of small, light blue dots arranged in a curved path across the upper middle; and two rectangular areas with a fine, light blue stippled texture, one in the upper right and one in the lower left. The Steelcase logo is centered in the middle of the page.

**Steelcase®**