

A Systemic Approach to a Safer Workplace

A multi-pronged framework for thinking about human health, safety and comfort in the workplace.

Organizations around the world are considering how and when to return to the office based on vaccine rollouts and other factors impacting the spread of COVID-19. When employees do return, they will expect a greater emphasis on safety — citing air quality and adherence to safety protocols as top needs. While safety measures (like fire suppression) have always been important in the office, the pandemic has highlighted the need for the office to play a role in mitigating the spread of disease and it has taught us a more holistic approach is required going forward.



Creating a Safer Workplace

Steelcase consulted with leaders in workplace and product design, top-tier academic researchers and scientists who study airborne virus transmission, surface materials experts and studied data analytics-enabled experiences to inform a multi-faceted approach to workplace health and safety. The resulting framework (see above) focuses on five areas that can layer together to help create a safer environment – not only during the pandemic but during annual outbreaks like flu season, which accounts for around [10% of sickness-related absences from work in Europe](#) and costs business in France and Germany, for example, anywhere from 5.6 billion pounds to 8.5 billion pounds per year.

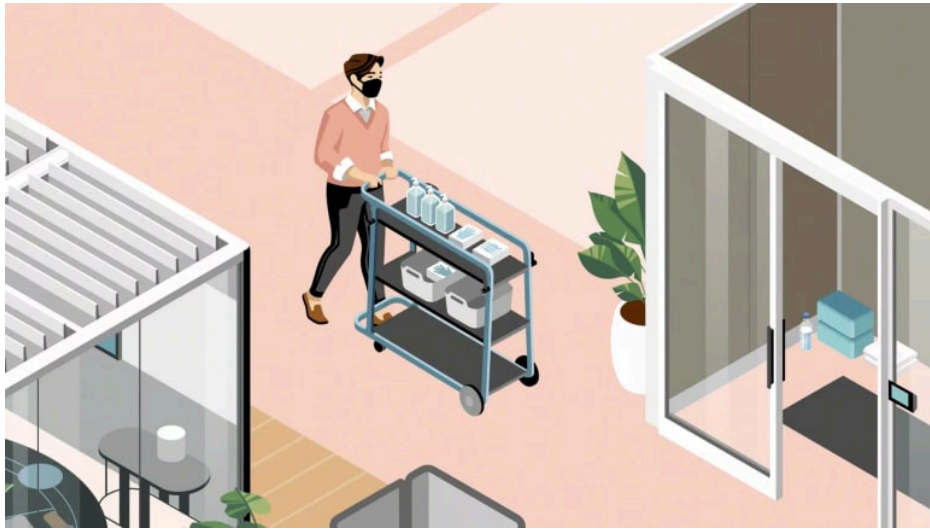
Dr. Lydia Bourouiba, MIT professor and director of The Fluid Dynamics Disease Transmission Laboratory, is collaborating with Steelcase to study disease transmission in the workplace. She notes in [The BMJ](#) that a comprehensive approach around people, air, surface and space is needed to minimize the risk of exposure and transmission while maximizing presence and space usage.

Human Behavior

The [European Agency for Safety and Health at Work](#) (EU-OSHA) has issued guidance to employers to help prevent the spread of COVID-19. EU-OSHA recommends a number of key elements to mitigating the disease including behavior changes. Limiting close contact, providing handwashing and sanitation supplies, staying home when sick, and cloth face coverings are all suggested strategies.

New policies, protocols and expectations will encourage healthier behaviors and look different for each organization.

Despite a focus on airborne transmission of COVID-19, a commitment to hand washing and good hygiene does have long-term benefits, as EU-OSHA suggests. There's always a small risk of fomite (surface) transmission with any disease, and good hand hygiene will slow the spread of any illness including colds and flu.

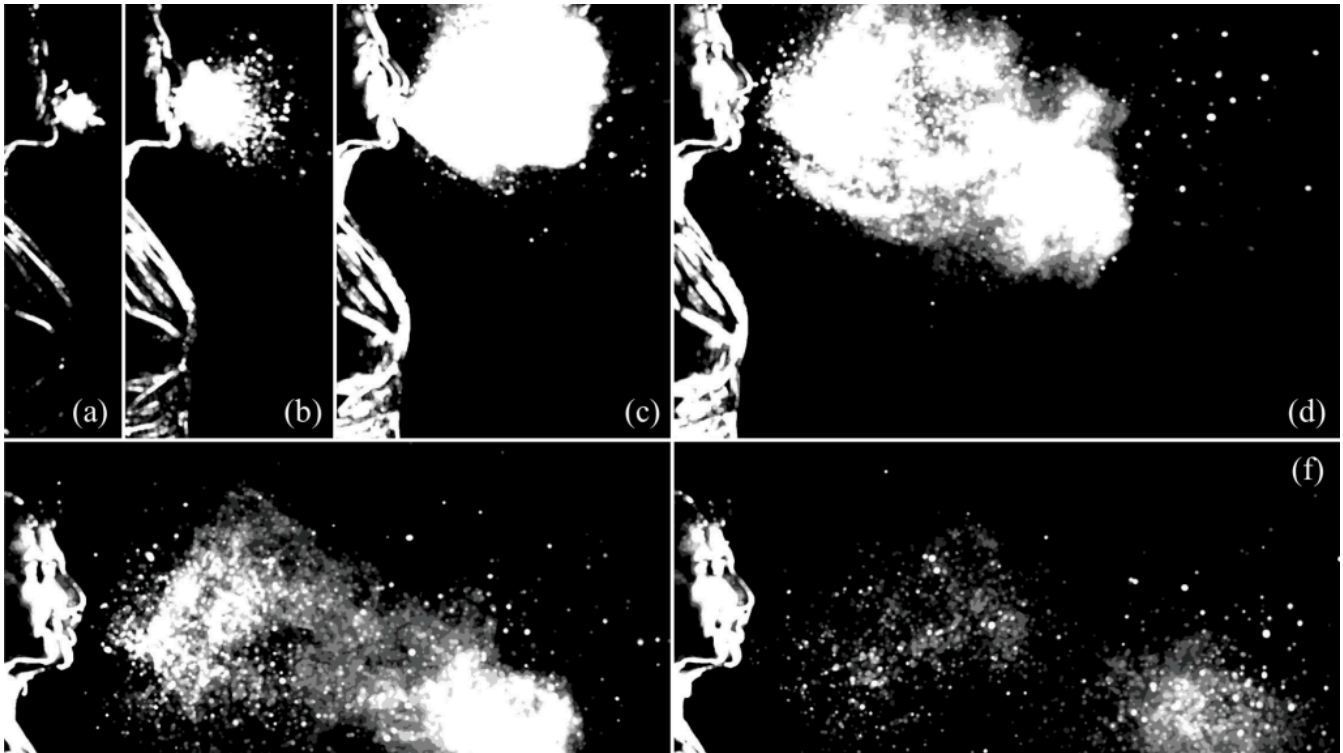


Hand-washing stations and access to cleaning supplies will act as visual cues to remind people to commit to these healthier habits.

Transparency and visibility to these changes in behaviors is key. People want to know their organization is doing everything it can to keep them safe, and that includes ensuring people adhere to existing and updated safety protocols. As Enza Iannopollo, a senior analyst at Forrester and one of the authors of “A European Perspective On The Future Of Work For 2021,” said: “Employers in the U.K. and across the E.U. must design empathy-rich and risk-aware strategies to bring back employees and customers to the shop floor, the office, or wherever it is they operate.”

Air Management

With findings that aerosol transmission is primarily what’s spreading this coronavirus (as well as other viruses like influenza A, SARS and viral meningitis, among others), air management is a key area of focus when it comes to creating a safer workplace. After surveying 32,000 people in 10 countries, Steelcase found it was one of employees’ top safety concerns. Attention to air quality will not only help mitigate the spread of COVID-19 and other airborne diseases such as flu, but also impact other areas of wellness and address contamination caused by wildfires, smog and allergens.



Courtesy: Bourouiba Research Group

Temperature, humidity level, and exchange and flow of air all contribute to a healthy environment. Companies planning new spaces, or who have control over their mechanical systems, can work with HVAC experts on implementing the [latest guidance](#) to help limit airborne spread and create healthier workplaces. For example, adding fans to windows to blow in outside air can increase ventilation.

But what if you can't adjust your HVAC systems, or you want additional mitigation? Decreasing density in the space and adhering to [appropriate distancing](#) gives some expelled droplets a chance to fall to the ground before reaching anyone.

[Research](#) published by the National Center for Biotechnology Innovation has also found “high-efficiency filters, stand-alone air cleaners and ultraviolet germicidal irradiation (UVGI) units installed in rooms or ducts can be used to provide the equivalent of outdoor air supply to rooms,” which reduces the concentration of pathogens in the air. [REVA](#), Federation of European Heating, Ventilation and Air Conditioning Associations, agrees, but noted, “To be effective, air cleaners need to have HEPA filter efficiency, i.e., to have a HEPA filter as the last step.”

Application + Product Design

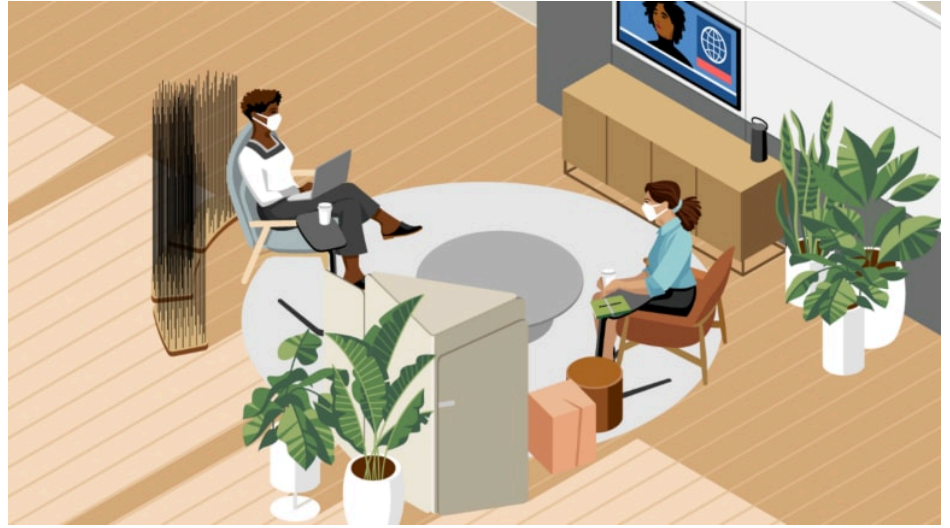
Designing for virus mitigation and safer spaces means considering how to balance new strategies:

Density – how many people are in a space, and which spaces need more attention based on usage.

Geometry – adjusting how furniture is configured to avoid face-to-face orientation and direct air flow to and from air purifiers and vents.**

Division – adding barriers, especially in places where distancing is not possible, to contain people’s exhalations.

Research tells us people want a safe workplace – but they also need it to be compelling and inspiring.



Collaboration is a key benefit and motivator for bringing people back to the office. Shared spaces can create the vibe people crave in the workplace and can be designed with infection-control measures in mind. Collaboration and social spaces can be situated in open areas to allow for air flow and flexibility in terms of meeting size. And since lounge furniture is freestanding, it can often easily be moved apart to accommodate distancing, placed at angles to change geometry or shielded to create division. If distancing is not possible, [EU-OSHA](#) advises the use of barriers to block face-to-face pathways between individuals. When thinking about geometry, instead of having people sit across a table from each other, consider seating at right angles, spread apart.

Smart sensing-technology embedded throughout the workplace will help organizations use data to monitor occupancy and identify hotspots that might require more attention or additional adjustments. More hands-free technology like space scheduling devices or even automatic faucets and doors will add to a safer environment overall.

Surface Materials Performance

Soft surfaces contribute to a welcoming aesthetic that can feel more like home, bridging the transition from working at home to being back in the office. And research is providing initial evidence that fabrics are effective at reducing the surface-to-surface transmission of coronavirus. The COVID-19 virus remains active on porous surfaces a a much shorter time than non-porous surfaces like glass and metal, according to a study published in [The Lancet Microbe](#).

Steelcase commissioned an independent lab to conduct the first-ever study of how long the virus remained active on contract surface materials. Using ISO 18184 and OC43 (an ASTM-recommended surrogate for SARS CoV-2), the lab found the following:

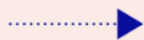
After 2 hours	→	no active virus was recovered from the polyurethane-coated fabric.
After 12 hours	→	no active virus was recovered from the 100% polyester fabric.
At the 24 hour point	→	the amount of active virus that could be recovered from the 100% wool fabric was reduced by 93.6%.

After 2 hours



no active virus was recovered from the polyurethane-coated fabric

After 12 hours



no active virus was recovered from the 100% polyester fabric.

At the 24 hour point



the amount of active virus that could be recovered from the 100% wool fabric was reduced by 93.6%.

In other words, almost no virus was detectable on the three fabrics within a day. Other enveloped viruses such as influenza A have been shown to display similar differential survival times on porous vs. non-porous materials, further supporting the contention that textiles are likely not a predominant source of contact transmission during annual flu outbreaks (as with SARS-CoV-2).

Disinfection is still important if there's been a suspected case of COVID-19, flu or other illness within the last 24 hours. But typically, routine cleaning should be sufficient to lower transmission risk.

Materials that have virus or bacteria-inhibiting properties can add another layer of protection. Copper, for example, has long been known to have antimicrobial properties. And there's strong research showing copper can be an effective countermeasure against SARS-CoV-2. Investing in copper for high-touch, multi-use areas like door handles can support cleaning protocols by ensuring the virus doesn't live long on surfaces between cleanings.

Cleaning + Disinfecting Practices

There are three main factors to consider when thinking about mitigating surface transmission of viruses and bacteria in the workplace:

- How many people use the space on a daily basis?

- How often is a surface touched?
- How often will a space be cleaned?

When considering these three factors together, organizations can focus on high-touch, multi-use surfaces that carry the most risk — like conference room table surfaces, meeting room door handles and conference chair arms. Low-touch surfaces like chair seats and bases, monitors, walls, floors and table legs carry a much lower risk of transmission.

More frequent and visible cleaning – especially of high-traffic areas – can help people feel at ease. And disinfection is recommended when there has been a suspected or confirmed case of COVID-19 within the last 24 hours.

“In most situations, cleaning surfaces using soap or detergent, and not disinfecting, is enough to reduce risk.”

CENTERS FOR DISEASE CONTROL AND PREVENTION (CDC)

Yet, scientists caution against “hygiene theater” – or [overcleaning](#) . Overuse of disinfectants and antimicrobial products can lead to superbugs and trigger health and environmental issues.

Thinking Long Term

Safety is essential as people return to a better work experience than the one they left. People want to both be safe and feel safe – which means new safety measures and protocols that they can not only see, but also trust are being put into practice. A systemic, multi-faceted approach that includes attention to human behavior, air management, application and product design, surface materials, and cleaning and disinfecting practices considers the coronavirus today, but is also applicable to colds, seasonal flu and indoor allergies as well. The goal is to create a workplace that’s comfortable for all employees and ready to respond as conditions change.

Sources:

**Steelcase Global Return to Workplace March 2021*

*** Healthy Teaching Recommendations, Prof. Lydia Bourouiba, MIT, August 2020*

+About Steelcase

+Customer Care

+Legal Notices

+Follow Us

+

+Work Better Newsletter Subscription

+Contact Us

Steelcase

© 1996 - 2022 Steelcase Inc. is a global leader in office furniture, interior architecture and space solutions for offices, hospitals and classrooms. Our furniture is inspired by innovative research in workspace design.