

Steelcase

3D MICROKNIT

T 63084 5T27

AMER 5T27

APAC 5T27

Materials are displayed for reference and may vary by screen and print quality. Please refer to a physical sample for actual color and detail

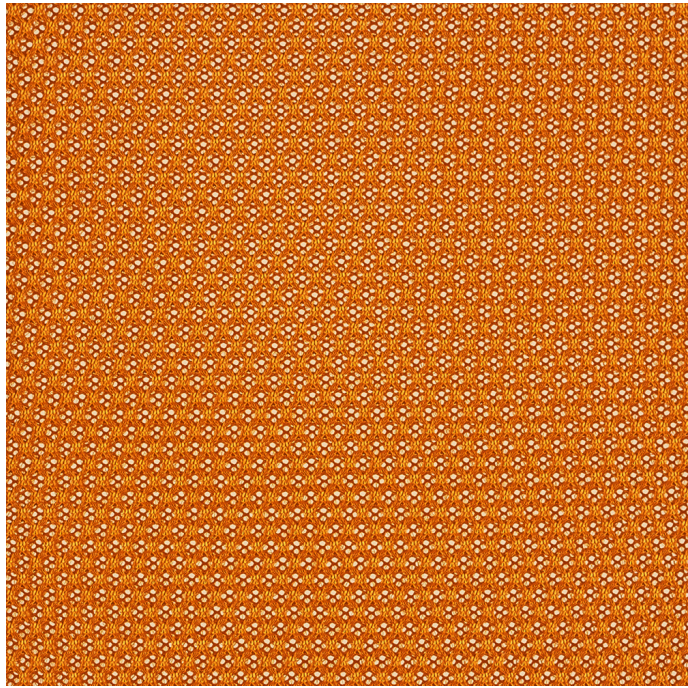
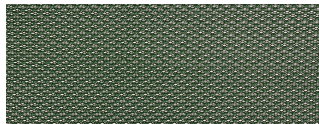


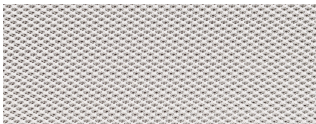
Image Shown: Warp Horizontal



Repeat



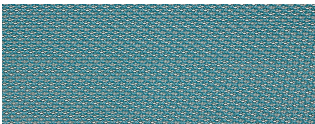
T 67059 5T34



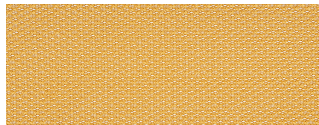
T 60061 5T31



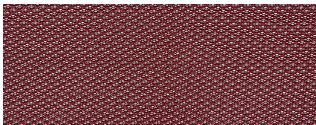
T 63073 5T38



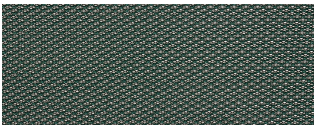
T 67061 5T37



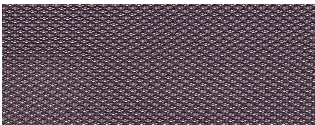
T 62061 5T36



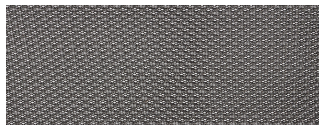
T 64134 5T35



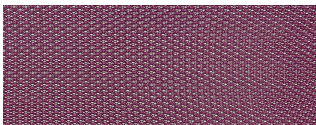
T 67060 5T33



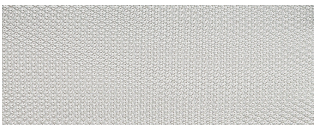
T 65088 5T32



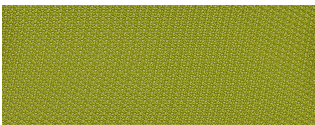
T 60205 5T29



T 65092 5T28



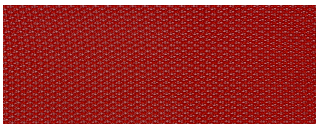
T 60204 5T20



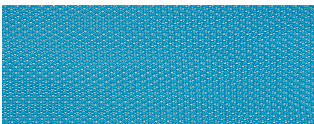
T 68161 5T26



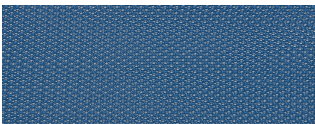
T 61224 5T25



T 64147 5T24

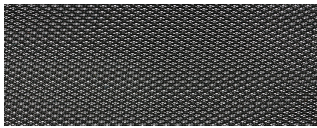


T 67066 5T23

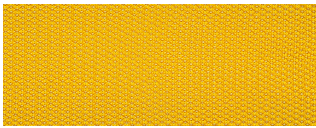


T 66171 5T22

COLORWAYS



T 60999 5T21



T 62069 5T30

OVERVIEW

Material Type	Knit/Mesh
Price	Mesh
Offering	Standard Surfaces, Product Specific Material
Brand	Steelcase
Content	100% Polyester
Application	Seating Upholstery
Global Availability	Americas, Europe, Middle East, Africa, Asia Pacific
Design	Solid, Pattern, Texture
Sustainability	Oeko-Tex® Standard 100
Sustainability	Oeko-Tex® Standard 100

SPECS

Abrasion Wyzenbeek	100,000 Martindale Cycles
CHARACTERISTICS	
Weight	587.6 grams per linear meter
Width	54 Inches
Country of Origin	United States
Warranty	5 Year

Steelcase

3D MICROKNIT

FULL AVAILABILITY

STEELCASE SERIES 1 EMEA (H)

STEELCASE SERIES 2 EMEA (H)

Steelcase

Visit [Steelcase.com](https://www.steelcase.com)

©2020 Steelcase Inc. All rights reserved. All specifications subject to change without notice.
Trademarks used herein are the property of Steelcase Inc. or of their respective owners.