

Steelcase

Ascent

Sterling Dark TE03

AMER TE03

Materials are displayed for reference and may vary by screen and print quality. Please refer to a physical sample for actual color and detail

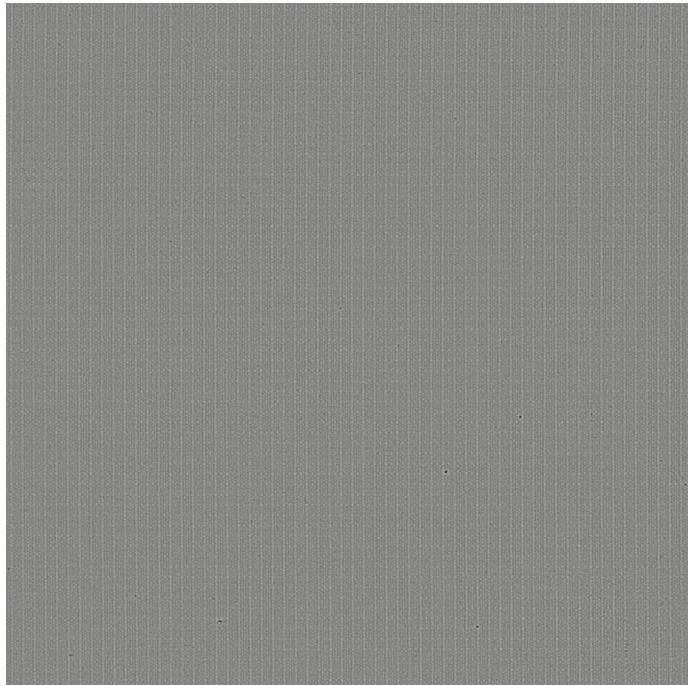


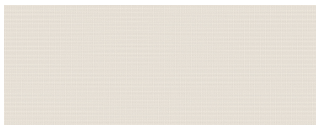
Image Shown: Warp Vertical



Sea Salt TE10



Light Peacock TE09



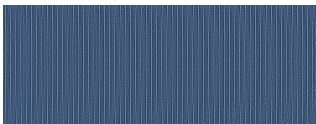
Sand TE08



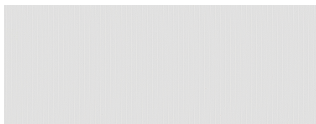
Rose Quartz TE07



Olivine TE06







Indigo TE05



Arctic White TE04

OVERVIEW

Material Type	Woven
Price	Price Group A
Offering	Standard Surfaces
Brand	Steelcase
Content	100% Polyester
Application	Vertical Surface
Global Availability	Europe, Middle East, Africa, Americas
Cleaning Code	W
Design	Texture
Sustainability	Does Not Contain Flame Retardants, Does Not Contain PVC, Does Not Contain Heavy Metals
Notes	This will be leaving in April 2025
ACT	   

SPECS

Abrasion Taber	100
Dry Crocking	Class 4
Wet Crocking	Class 4
Colour fastness to Light	Class 4
Brush Pill	Class 3.5

CHARACTERISTICS

Fabric Backing	Polyurethane Coating
Topical Finish	None
Weight	4.6 oz per linear yard
Width	59 Inches
Country of Origin	China
Warranty	5 Year

FULL AVAILABILITY

WORK TENTS-POD TENT EMEA (H,V)