

Steelcase

REPLY AIR MESH

Merlot AR16

AMER AR16

APAC AR16

Materials are displayed for reference and may vary by screen and print quality. Please refer to a physical sample for actual color and detail

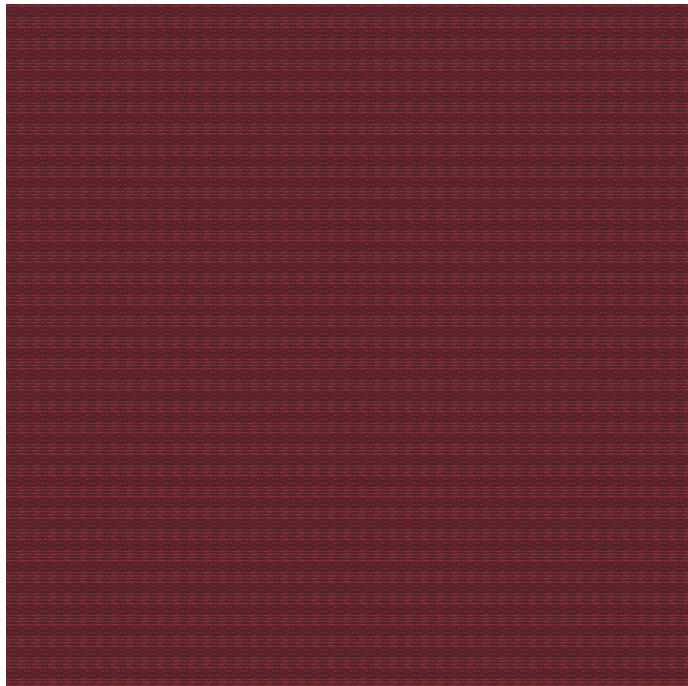
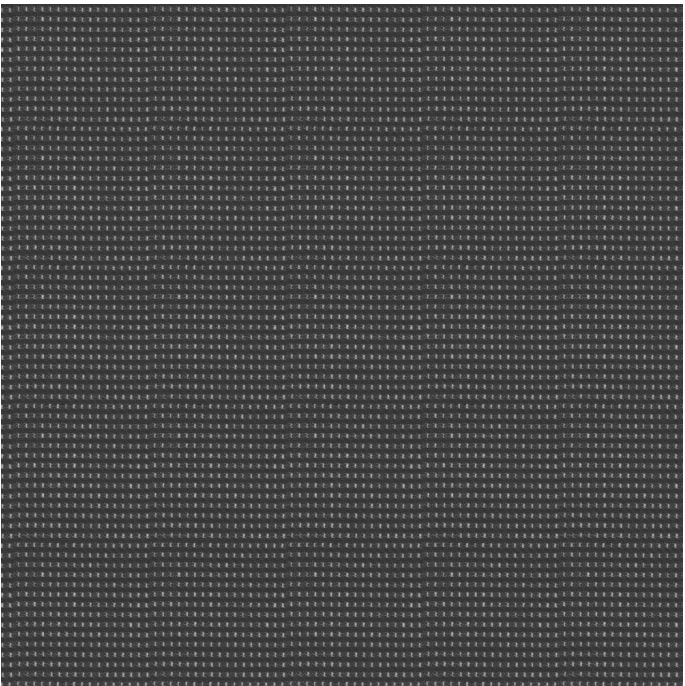
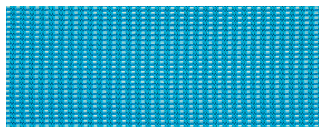


Image Shown: Warp Horizontal



Repeat



Blue Jay AR10



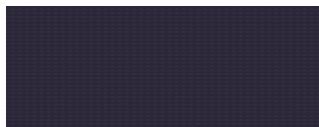
Peacock AR14



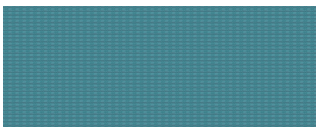
Honey AR17



Saffron AR19



Aubergine AR13



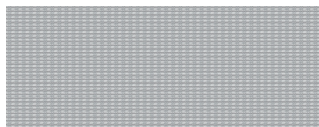
Lagoon AR18



Apple Green AR06



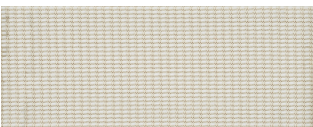
Jungle AR15



Grey AR01



Black AR02



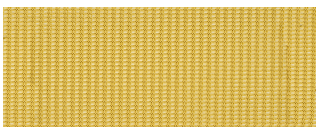
Coconut AR12



Royal Blue AR05



Red AR04



Canary AR11

OVERVIEW

| | |
|---------------------|---|
| Material Type | Knit/Mesh |
| Price | Mesh |
| Offering | Standard Surfaces |
| Brand | Steelcase |
| Content | 64% Polyester, 36% Nylon (Polyamide) |
| Application | Seating Upholstery |
| Global Availability | Americas, Europe, Middle East, Africa, Asia Pacific |
| Design | Solid, Pattern, Texture |

SPECS

| | |
|--------------------------|--------------------------|
| Abrasion Wyzenbeek | 80,000 Martindale Cycles |
| Dry Crocking | Class 4.5 |
| Wet Crocking | Class 5 |
| Colour fastness to Light | Pass |
| Brush Pill | Class 4.5 |
| Fire Retardancy | Passes EN 1021-1 |

CHARACTERISTICS

| | |
|-------------------|------------------------------|
| Weight | 494.8 grams per linear meter |
| Width | |
| Country of Origin | Italy |
| Warranty | 5 Year |

Steelcase

REPLY AIR MESH

FULL AVAILABILITY

EASTSIDE 4 LEGS EMEA (H)

EASTSIDE SLED EMEA (H)

REPLY AIR EMEA (H)

Steelcase

Visit [Steelcase.com](https://www.steelcase.com)

©2020 Steelcase Inc. All rights reserved. All specifications subject to change without notice.
Trademarks used herein are the property of Steelcase Inc. or of their respective owners.