

Steelcase

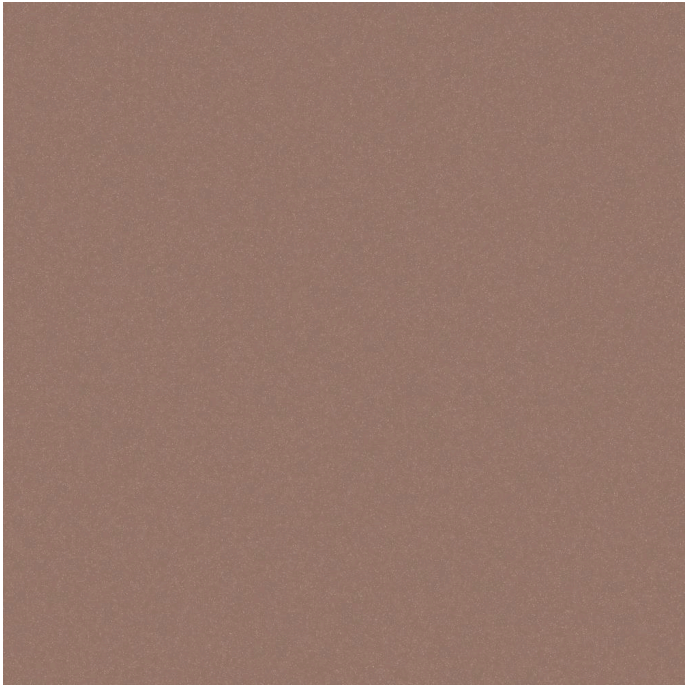
# Lux Matte Copper

Lux Matte Copper 4B25

AMER 4B25

APAC 4B25

Materials are displayed for reference and may vary by screen and print quality. Please refer to a physical sample for actual color and detail



OVERVIEW

Material Type	Lux Coatings
Offering	Select Surfaces
Brand	Steelcase
Global Availability	Europe, Middle East, Africa, Americas, Asia Pacific

SPECS

CHARACTERISTICS

**FULL AVAILABILITY**

---

4.8 EMEA

465 Think Quilted Uph Back EMEA

Flex Active Frames/Collection (EMEA)

FlipTop Twin EMEA

FrameFour Bench EMEA

FrameFour EMEA

FrameOne Plus Bench EMEA

FrameOne Plus EMEA

Kalidro EMEA

Karman EMEA

Lares Desk/Bench/Conference

Migration SE EMEA

Ocular Arc EMEA

Steelcase Please EMEA

THINK TASK CHAIR 3D KNIT EMEA

THINK TASK CHAIR UPHOLSTERED  
SEAT AND BACK EMEA

TouchDown2 EMEA

WorkValet EMEA