

Steelcase

HEXA

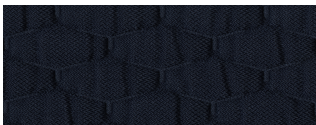
Dark Grey CL50

AMER CL50

Materials are displayed for reference and may vary by screen and print quality. Please refer to a physical sample for actual color and detail



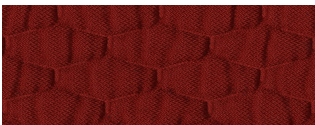
Light Grey CL51



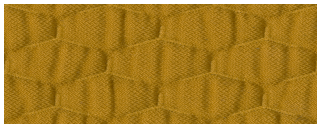
Blue CL52



Green CL53



Red CL54



Yellow CL55

OVERVIEW

Material Type	Woven
Price	Price Group 8
Offering	Standard Surfaces
Brand	Coalesse
Content	33.4% Polyester, 66.6% Acrylic
Application	Seating Upholstery
Global Availability	Europe, Middle East, Africa, Americas

SPECS

Abrasion Wyzenbeek	25,000 Martindale Cycles
Fire Retardancy	Passes EN 1021-1 and EN 1021-2

CHARACTERISTICS

Horizontal Repeat	0.95
Vertical Repeat	1.63
Weight	1091.8 grams per linear meter
Width	55 Inches
Warranty	5 Year

FULL AVAILABILITY

HOSU EMEA (H)