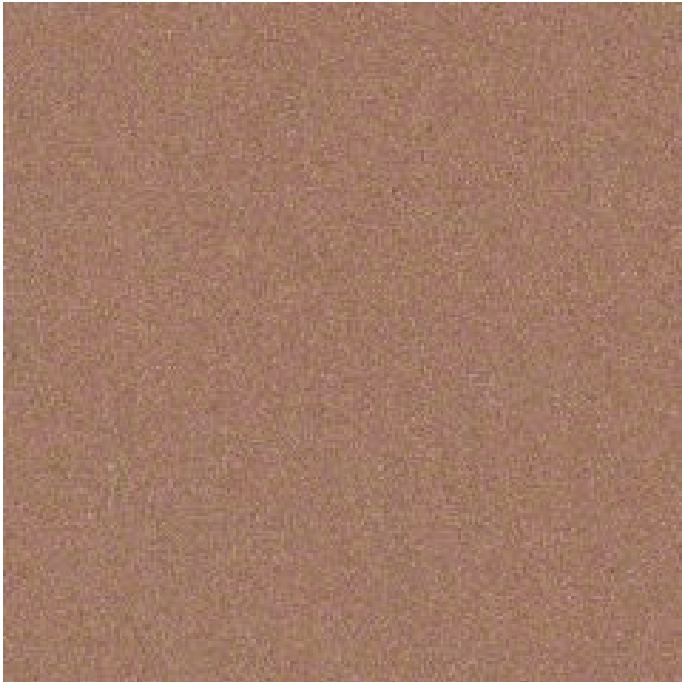


Steelcase

Copper Gloss

Copper Gloss 4805

Materials are displayed for reference and may vary by screen and print quality. Please refer to a physical sample for actual color and detail



OVERVIEW

Material Type	Smooth Metallic Paint
Offering	Standard Surfaces
Brand	Coalesse
Global Availability	Europe, Middle East, Africa

