

Steelcase

CONNECT 3D

Blue Jay 16-Connect3D

AMER 5021

Materials are displayed for reference and may vary by screen and print quality. Please refer to a physical sample for actual color and detail

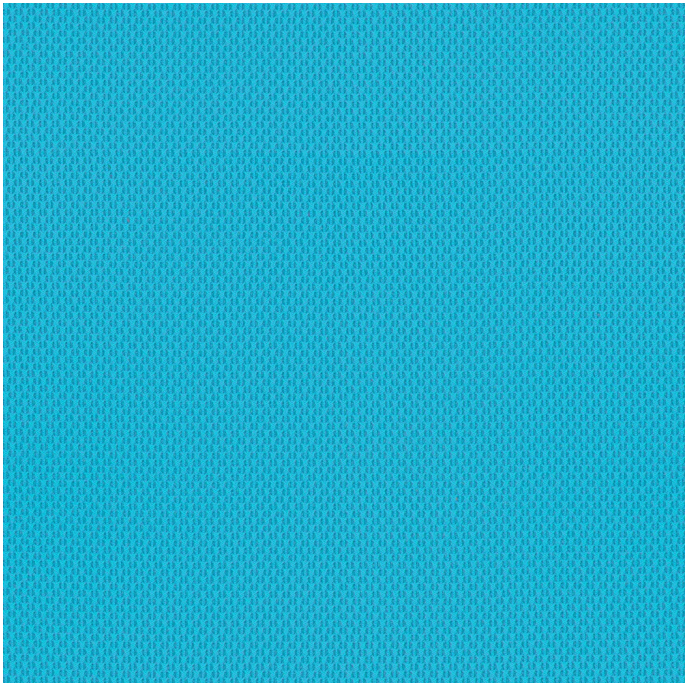
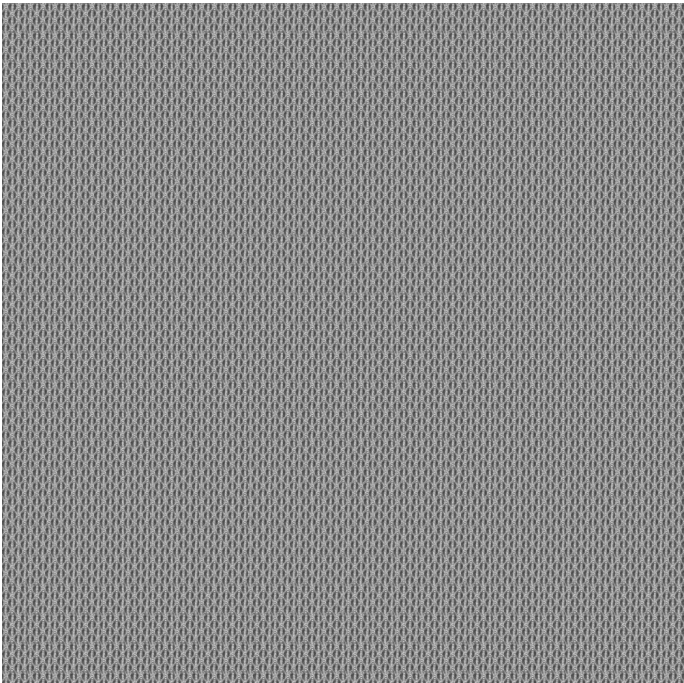
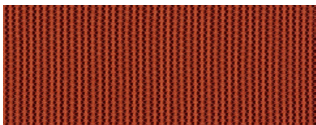


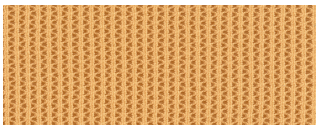
Image Shown: Warp Horizontal



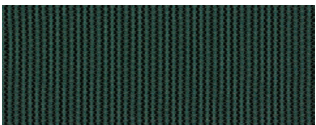
Repeat



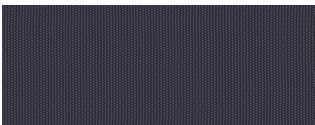
Saffron 37-Connect3D



Honey 38-Connect3D



Peacock 33-Connect3D



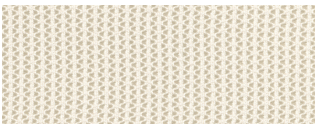
Aubergine 32-Connect3D



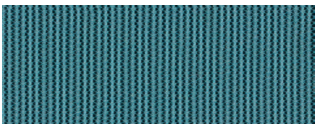
Pepper 10-Connect3D



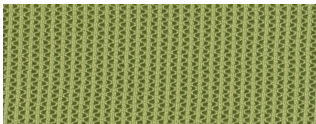
Orange 05-Connect3D



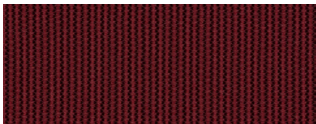
Coconut 14-Connect3D



Lagoon 36-Connect3D



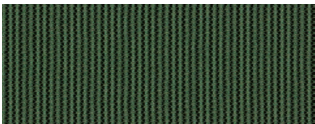
Apple Green 03-Connect3D



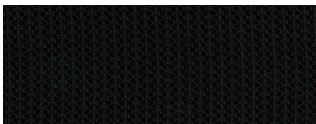
Merlot 35-Connect3D



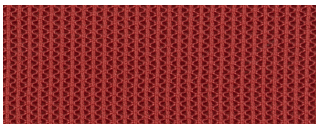
Beige 12-Connect3D



Jungle 34-Connect3D



Black 04-Connect3D



Scarlet 15-Connect3D

OVERVIEW

Material Type	Knit/Mesh
Price	Mesh
Offering	Standard Surfaces
Brand	Steelcase
Content	100% Polyester (Antimony Free Yarn)+
Application	Seating Upholstery
Global Availability	Americas, Europe, Middle East, Africa
Design	Solid, Texture

SPECS

Abrasion Wyzenbeek	70,000 Martindale Cycles
Fire Retardancy	Passes EN 1021-1

CHARACTERISTICS

Horizontal Repeat	0.17
Vertical Repeat	0.13
Weight	634 grams per linear meter
Width	59 Inches
Country of Origin	United States
Warranty	5 Year

