

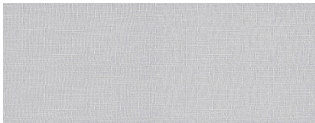
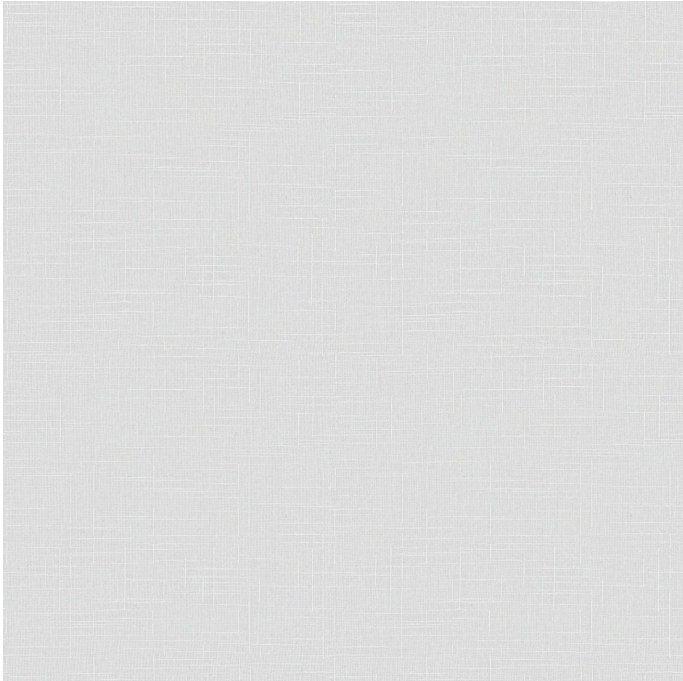
Steelcase

SHEER

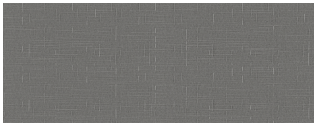
Arctic White TE01

AMER TE01

Materials are displayed for reference and may vary by screen and print quality. Please refer to a physical sample for actual color and detail



Platinum TE02



Sterling Dark TE11

OVERVIEW

Material Type	Woven
Price	Price Group 1
Offering	Standard Surfaces
Brand	Steelcase
Content	100% Polyester
Application	Vertical Surface
Global Availability	Europe, Middle East, Africa, Americas
Cleaning Code	W
Design	Texture
Sustainability	Does Not Contain Flame Retardants, Does Not Contain PVC, Does Not Contain Heavy Metals
Notes	This will be leaving in April 2025

SPECS

Abrasion Taber	125
Dry Crocking	Class 4.5
Wet Crocking	Class 4.5
Colour fastness to Light	Class 4
Brush Pill	Class 3.5

CHARACTERISTICS

Weight	2.5 oz per linear yard
Width	70 Inches
Country of Origin	United States
Warranty	5 Year

FULL AVAILABILITY

WORK TENTS-OVERHEAD TENT EMEA
(H,V)

WORK TENTS-POD TENT EMEA (H,V)