

MONITOR ARMS COMPARISON



FSMA INTRO

- Full ergonomic features at a value price point
- Supports monitors up to 9 kg with no price up-charge and supports 32" screens in dual monitor applications
- No bounce, gas cylinder with superior performance



VOLLEY

- Easily retrofit from single arm to dual arm and vice versa
- Highly adaptable with a large range of movement
- Ideal for collaborative settings



PLURIO

- Scalable system allows up to six monitors, maximizing display usage
- Best suited for resident workers
- Highly sustainable, with 99% recyclable content



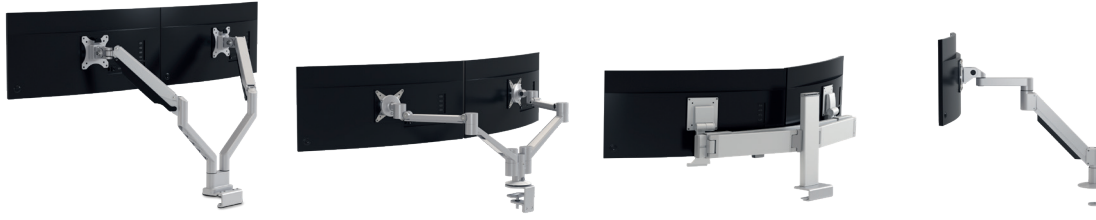
FSMA

- Supports the largest range of monitor weight, up to 14 kg
- Supports multiple mounting brackets
- No bounce, gas cylinder with superior performance

TOP 3 HIGHLIGHTS

PERFORMANCE

Weight limit	0.9-9 kg	Max. 7 kg	Max. 9 kg	2.3-14 kg
Screen size	Max. 32 inches (both single and dual version)	Max. 24 inches (both single and dual version)	Max. 30 inches (single version) Max. 24 inches/arm for dual version with standard column or 27 inches/arm with extended column	Max. 27 inches (single version only)
Spring type	Gas cylinder: counterbalance based on the weight of the monitor	Spring mechanism: counterbalance based on the weight of the monitor	Static arm does not have a spring, use Allen key for adjustments	Gas cylinder: counterbalance based on the weight of the monitor
Rotation: 360° portrait to landscape view	yes	yes	yes	yes
Vertical range	600 mm	543 mm	Standard: 190.5 mm Extended: 317.5 mm	457.2 mm
Horizontal range	300 mm	240 mm	310 mm	406 mm



FEATURES	FSMA INTRO	VOLLEY	PLURIO	FSMA
Options	Single/ Dual	Single/ Dual	Single/ Dual/ Triple/ One over One/ Laptop Support	Single/ Heavy Duty (heavy monitors)
Colours	1 (Platinum Silver)	2 (Platinum Silver, Arctic White)	1 (Platinum Silver)	2 (Platinum Silver, Pearl Snow)
Fixation type	2 (c-clamp, thru desk)	3 (c-clamp, slat wall, thru desk)	4 (c-clamp, thru desk, integrated rail single and dual)	4 (c-clamp, thru desk, slat wall, double integrated rail)
Cable management	Routed beneath the arm; fixed with cable clips	Cable covers on both upper and lower arm	Fixed with cable clips	Routed beneath the arm; fixed with cable clips
Space saving ³	yes	yes	yes	yes
180° rotation stop ¹	yes	yes	N/A (static arm)	no
Quick release tilter VESA plate ²	yes	yes	yes	yes option; not standard
Sustainability/ Manufacturing	Manufactured in China Aluminum, Steel & ABS plastic	Manufactured in China/ 40% recycled aluminum/ Aluminium, Steel & ABS plastic	Manufactured in US/ 99% recyclable content/ Aluminum, Steel & ABS Plastic	Manufactured in US & China/ Aluminum, Steel & ABS Plastic
Compatibility	Questions on compatibility with ranges of desks, benches or privacy screens? Contact LineOne or visit Village (Products - Accessories - Computer Support Tools)			

¹ Supports back to back applications and prevents the monitor arm from swinging into screens and partitions

² Refers to the head mechanism; the capability to adjust the tilting angle of the monitor up or down

³ Designed to optimize the worksurface when monitors are not in use

Steelcase[®]

Visit steelcase.com



facebook.com/Steelcase



twitter.com/Steelcase



youtube.com/SteelcaseTV