

Coalesse Surface Materials Reference Guide June 2026

Availability

Electronic price list updated with release 204.C (U.S.) and 158.C (Canada), dated June 15, 2026.

All specifications subject to change without notice. Reference the electronic catalog/Hedberg for current pricing.

Transitional products in this specification guide are **maintained for existing customers only** and are likely to be phased out over time. These products are indicated with a **†**. Products that are scheduled to be culled are indicated with an **X**, followed by the last order entry date.

► For a list of all trademarks, refer to the last page of this specification guide. © 2026 Steelcase Inc.

Note: Actual colors will vary due to printing process.

| | |
|---|----|
| What's New in Surface Materials | 2 |
| Upholstery | 4 |
| Customer's Own Material | 6 |
| Fabric Matrix | 8 |
| Upholstery Palette | 9 |
| Leather/Faux | 18 |
| Cut Yardage Net Price List | 20 |
| Leather and Faux Leather Matrix | 21 |
| Leather Palette | 22 |
| Faux Leather Palette | 24 |
| Wood | 28 |
| Solid Wood Matrix | 30 |
| Solid Wood Stains Palette | 32 |
| Veneer Matrix | 34 |
| Veneer Palette | 36 |
| Laminate | 41 |
| High-Pressure Laminate Matrix | 42 |
| High-Pressure Laminate Palette | 46 |
| Laminate Edge Band Matrix | 50 |
| Recommended Worksurface 3 mm Edge Finishes | 54 |
| Glass | 56 |
| Glass Matrix | 57 |
| Glass Palette | 58 |
| Metal/Paint | 59 |
| Custom Paint | 60 |
| Metal/Paints Matrix | 62 |
| Metal/Paints Palette | 68 |
| Miscellaneous | 72 |
| Enea and Enea Lottus Plastic Matrix | 73 |
| Plastic and Miscellaneous Palette | 74 |
| Exponents, Potrero415, Potrero415 Light, Sistema, and SW_1 Exclusives | 77 |
| Care and Maintenance | 78 |



For Canadian Pricing

Canadian factor can be found at steelcase.com/CADpricing.

Calculate in the following order to avoid rounding errors:

- Multiply the base price and each option by the Canadian factor.
- Round each to the nearest dollar.
- Add base and options for total list price.

What's New in Surface Materials

Visit the **Finish Library** at <https://finishlibrary.steelcase.com/all-surfaces/brand/coalesse.html> or view the finish matrices to see list of availability, by product line. Samples can be purchased via Steelcase Marketing Resources.

Coalesse Fabrics—June 2025

Coalesse fabric price grades 6-14 are moving to align with Steelcase price groups 1-10.

Coalesse Partners—June 2021

All Coalesse partners surface material information has been moved to the new *Coalesse Partners Specification Guide*. With EMU content being housed in one specification guide, finding information on these partner products is now easier than ever.

Steelcase Back-Painted Finishes—February 2020

We are enhancing our back-painted glass portfolio through the addition of color. The colors range from a harmonious pink to a new neutral blue. By refreshing these color palettes, we are providing added value through the range and depth of our material offering.

Foundation, Steelcase Surfaces—December 2019

New FR-free vinyl, Foundation launches. Free of harmful phthalates, Foundation is a non-woven, high-performing, bleach-cleanable material, and is perfect for our education and health environments. Foundation is available in 14 colors at Price Group 6.

New Accent Paints, Steelcase Surfaces—December 2019

Six new trend driven paints have been added to the Steelcase accent paint palette.

Coalesse Standard Color Paints—October 2019

Seven textured paints that draw from the Coalesse color point-of-view and its restorative tone of nature have been added as a Group 1 paint to many of our best-selling product lines.

Refreshed LessThanFive Color Palette—October 2019

Eight new matte finishes have been added to LessThanFive that align with the Coalesse color point-of-view and its biophilic tones from nature.

LessThanFive Essential—October 2019

Four new neutral matte finishes have been added to LessThanFive Essential, sold in multi-packs of two or four at a reduced price point per chair.

PerfectMatch, Custom Paint—October 2019

Coalesse Color empowers more personal expression by expanding color choices through our custom capabilities program. For select, preset Coalesse products, we have improved the process to make it even easier to order. Once the color match process is complete and the special paint finish code has been assigned, order with a Group 3 paint upcharge. For more information, review *Custom Paints* on page 60.

Lux Coatings, Steelcase Surfaces—October 2019

Steelcase Lux Coatings has been added to even more product lines and is now available as a Group 3 paint upcharge.

Accent Paints, Steelcase Surfaces—October 2019

Trend driven Steelcase accent paints have been added to many of our best-selling product lines. Accent paints are now offered as a Group 3 paint upcharge.

Coalesse Standard Glass Finishes—October 2019

Previously available on Potrero415 only, six back-painted glass finishes are now available as standard on all product lines with back-painted glass. Four nature inspired and two neutral finish additions complement the existing glass palette – bringing more choice.

In addition, new frosted glass finish 6511 Acid Etched is now available to order, replacing ACF Absolute Clear Frosted (culled in June 2020). For details, please refer to page 56.

What's New in Surface Materials

Upholstery Coalesse

Upholstery

All Coalesse textiles are priced by groups. Some Coalesse fabrics can be treated for flame retardancy; contact Customer Service. All Coalesse products are handcrafted, making each unique. Certain fabrics and leathers will appear loose and may differ from like products due to comfort wrinkles when upholstered.

A contrasting welt is available on some products. Consult Customer Service for yardage or square feet requirements and prices. All stripes will be applied vertically unless customer specifies otherwise. Loose cushions on Coalesse products are not fully upholstered (not reversible).

Coalesse offers select fabrics from the following manufacturers grouped in our pricing:

- Designtex
- Maharam
- Kvadrat
- Camira
- Gabriel
- Conneaut
- Moore & Giles
- Steelcase

Simply select one of the above manufacturers and available fabric finishes during specification. Coalesse does not stock graded-in fabrics and can only respond based on availability and lead times from the above manufacturers. For current groups, fabric families, and product availability, refer to the Coalesse fabric database: fabric.coalesse.com.

Special Fabric Applications*

Backing*

- Backing information is found on each product page in the Coalesse Specification Guides. Select this option when ordering your product to have backing applied. Price varies by product according to yardage it requires.

*Prices subject to change without notice and an additional two week lead time will apply for 54" wide fabrics. Wider fabrics will require four week additional lead time. *Check fabric database to determine if backing is required at www.Coalesse.com.

Coalesse Upholstery

Coalesse fabrics are priced by groups from 1 through 10 and leathers 1 and 2. Fabrics and leathers may be purchased separately as cut yardage, see page 20. All products are handcrafted, making each unique. Certain fabrics and leathers will appear loose and may differ from like products due to wrinkles when upholstered. A contrasting welt is available on some products. Consult Customer Service for yardage or square feet requirements for pricing.

All stripes will be applied vertically unless customer specifies otherwise. Loose cushions on Coalesse products are not fully upholstered (not reversible). Any Select Surface or COM textile should be reviewed with supplier to verify availability. In some cases a textile supplier may require minimums that exceed your furniture order requirements. In these situations, you will be contacted with an option to select a different textile or continue with your original textile selection as a COM-DTP. If you choose to continue with your textile selection as COM-DTP to allow you to order the minimum required, please ship only the textile needed to Coalesse for your furniture order.

SW_1 Knit

Applies to: SW_1 Collection

- 5KG0 Sand
- 5KG1 Silver
- 5KG3 Black
- 5KG4 Ivory
- 5KG5 Coal
- 5KG6 Fire
- 5KG9 Pewter
- 5KH0 Ice
- 5KH1 Currant
- 5KH2 Ocean
- 5KH3 Silver Grey
- 5KH4 Olive
- 5KH5 Blue Ink
- 5KH6 Blue Bird
- 5KH7 Blush
- 5KH8 Goldenrod
- 5KH9 Leaf

Lagunitas Knit

Applies to: Lagunitas Focus nook and lounge system

- Group 1**
- 5K50 Sand
 - 5K51 Silver
 - 5K52 Pewter
 - 5K54 Black
 - 5K58 Ivory
 - 5K59 Coal
 - 5K70 Silver Grey

Group 2

- 5K55 Fire
- 5K60 Ice
- 5K61 Ocean
- 5K63 Leaf
- 5K67 Currant
- 5K71 Olive
- 5K72 Blue Ink
- 5K73 Blue Bird
- 5K74 Blush
- 5K75 Goldenrod

Hexa Upholstery

Applies to: Hosu

- Group 4**
- CL50 Dark Grey
 - CL51 Light Grey
 - CL52 Blue
 - CL55 Yellow
 - CL70 Saffron
 - CL71 Rose Quartz
 - CL72 Lagoon
 - CL73 Sea Salt
 - CL74 Steam
 - CL75 Ocean
 - CL76 Sage

Fusion Upholstery

Applies to: Massaud work lounge

- Group 5**
- CL60 Caviar
 - CL62 Graphite
 - CL64 Steam*
 - CL80 Terracotta
 - CL81 Copper
 - CL82 Sage
 - CL83 Blue Ink
 - CL84 Blue Steel

* Not available on Hosu

Upholstery Steelcase

Steelcase Upholstery

Coalesse offers a select palette of Steelcase fabrics as standard. This provides the convenience of an integrated finish offering and ease of specification. See the Steelcase Standard Fabric Matrix for availability by product line.

Group 1

Jacks **E**

- 5B61 Taupe
- 5B63 Camel
- 5B64 Pewter
- 5B70 Midnight

Link

- 5A24 Blue
- 5A25 Navy
- 5A27 Black

Group 2

Cogent: Connect

- 5S15 Coconut
- 5S16 Turmeric/Honey
- 5S17 Tangerine
- 5S18 Scarlet
- 5S19 Concord
- 5S21 Blue Jay
- 5S23 Wasabi
- 5S24 Nickel
- 5S25 Graphite
- 5S26 Licorice
- 5S27 Malt
- 5S28 Root Beer
- 5S93 Indigo/Blueprint
- 5S94 Lizard/Jungle
- 5S95 Sailor
- 5S96 Quicksilver
- 5S99 Lipstick/Merlot
- 5SD0 Royal Blue
- 5SD1 Aubergine
- 5SD2 Peacock
- 5SD3 Lagoon
- 5SD4 Saffron
- 5SD5 Citrine
- 5SD6 Rose Quartz
- 5SD7 Sea Salt
- 5SF3 Storm Cloud
- 5SF4 Olivine

Dovetail by Designtex

- 5H39 Light Mocha
- 5H40 Pebble
- 5H41 Warm White
- 5H42 Sandstone
- 5H43 Honeycomb
- 5H44 Terra
- 5H45 Honeydew
- 5H46 Denim
- 5H47 Storm
- 5H48 Ice Blue
- 5H49 Aura
- 5H50 Darkest Grey

Foundation

- 5875 Black
- 5876 Navy
- 5877 Foggy Night
- 5878 Sailor
- 5879 Ivory
- 5880 Seal
- 5881 Peat
- 5882 New Sand
- 5883 Cranberry
- 5884 Spring
- 5885 Honey
- 5886 Folkstone
- 5887 Pebble
- 5888 Oregano

New Black

- 5J08 Jack
- 5J09 James
- 5J12 Harley

SoftNext

- 5H27 Obsidian
- 5H28 Foggy Night
- 5H29 Greystone
- 5H30 Mocha
- 5H31 Clay
- 5H32 Sandstone
- 5H33 Chalk
- 5H34 Midnight
- 5H35 Blue Mica
- 5H36 Jade
- 5H37 Burnt Umber
- 5H38 Cinnabar

Stand In

- 5621 Sleet
- 5622 Lunar
- 5623 Cyclone
- 5624 Eclipse
- 5625 Powder
- 5626 Chardonnay
- 5627 Graham
- 5628 Sediment
- 5629 Allspice
- 5630 Apple
- 5631 Lava
- 5632 Cayenne
- 5633 Plantain
- 5634 Parsley
- 5635 Scallion
- 5636 Atlantis
- 5691 Orca
- 5740 Burlap
- 5741 Porter
- 5742 Tusk
- 5743 Putty
- 5744 Blueberry
- 5745 Charteuse
- 5746 Mango
- 5747 Sedona
- 5748 Juniper
- 5749 Peanut

Group 3

Billiard Multi-Use by Designtex

- 5H11 Poppy
- 5H12 Tangelo
- 5H13 Citrine/Citron
- 5H14 Avocado
- 5H16 Indigo
- 5H17 Mallard
- 5H18 Teak
- 5H19 Cumulus
- 5H20 Pewter
- 5H21 Gunmetal
- 5H22 Ink
- 5H23 Rose Quartz
- 5H24 Sea Salt
- 5H25 Storm Cloud
- 5H26 Olivine

Group 5

Bo Peep

- 5G67 Bone
- 5G72 Honey Mustard
- 5G73 Marmalade
- 5G74 Picnic
- 5G75 Pinot
- 5G76 Bloom
- 5G77 Grapevine
- 5G79 Artichoke
- 5G80 Serpent
- 5G81 Carolina
- 5G82 Blue Bonnet
- 5G83 Nautical
- 5G84 Gravel
- 5G85 Sharkskin
- 5G86 Kohl

Remix

- RE01 Rust
- RE03 Pebble
- RE04 Dark Chocolate
- RE06 Linen Beige
- RE08 Concrete
- RE09 Sky Blue
- RE10 Blue Jean
- RE11 Ivy Green
- RE13 Night Blue

Silk

- 5L31 Dijon
- 5L32 Seaweed
- 5L33 Boysenberry
- 5L35 Marina
- 5L36 Heather Blue
- 5L37 Blue Raspberry
- 5L38 Cauldron
- 5L39 Flaxen

E = Excluded

Customer's Own Material

Customer's Own Material

Coalesse is pleased to cooperate with COM/COL selections. Prior to order placement for exact yardage requirements, a sample cutting of actual COM/COL must be submitted to Coalesse for approval only, if fabric approval is not found in Coalesse fabric database. Identify the name and number of units on which the fabric/leather is to be applied. If COM has a repeat, the sample should be large enough to show the entire repeat. Coalesse will not accept nor use any painted leathers. A painted leather is described as any suede or leather which is not aniline dyed with the same color throughout the thickness of the hide.

Even after preliminary approval, Coalesse reserves the right to reject COM/COL if necessary when the quality is not satisfactory for the item it is intended to be used on. Once COM/COL is accepted, Coalesse assumes no responsibility for its overall appearance, flammability, normal durability, colorfastness, or any other quality, after upholstered on a Coalesse product.

Coalesse Standard to Buy Program

The Customer's Own Material (COM) Program offers the opportunity for customers to select fabrics that are not offered through the standard Coalesse surface materials program for use on our products. Through the COM program, Coalesse will test your materials for application on Coalesse products. Once approved, you can place your order. Coalesse will facilitate the entire ordering process and give you a production schedule. Coalesse will order the COM fabric directly from the textile manufacturer. For up-to-date information regarding fabric test results for all COM fabrics and details regarding yardage requirements for most Seating lines, visit the fabric database at www.coalesse.com.

Customers to Buy Scheduling Policy/COM/COL Policy

COM/COL must be received at manufacturing location no later than 20 working days prior to the order scheduled delivery date. If COM/COL is not received in this time frame, scheduling will move the order's delivery date out to the best available ship date. Customer Service will notify the dealer via e-mail of the order's new scheduled delivery date. Project size order shipment may be affected due to size of order. If the COM/COL is received and the COM/COL requires backing, scheduling will move order out to best available ship date. Backing charges will apply. If COM/COL is received defective or short yardage/sq. ft., the replacement COM/COL order must be received within three days to maintain scheduled delivery date on order. It is the responsibility of the dealer to advise Coalesse on what to do with defective materials. In addition, customers may request Coalesse to order for COM/COL materials.

Square Footage/Yardage Requirements

COM and COL price includes application of Customer's Own Material or Leather to frames. All COM and COL should be shipped freight prepaid to designated manufacturing location. Labels will be provided by your Customer Service representative to ensure clear textile identification.

Please have customers send COM/COL and add TAG: COM/COL.

COM and COL must be identified as follows to prevent order delays:

1. Name and address (should match purchase order)
2. Your furniture purchase order number/sales order
3. Style number to which fabric is to be applied
4. Supplier name and fabric name, number, and color

COL hides must be rolled for shipment to manufacturing location in a neat manner, avoiding creases and excessive roll marks. All leathers will be rejected if sent in a folded manner.

To determine COL square footage, see COL requirements for each product. Square footage requirements are based on an average hide size of 45-50 square feet of clean, usable leather. If the COL has a smaller average hide size, please consult Customer Service for quotation. Please note, leather is a natural product and all square footage requirements are estimations. The shape of the COL hides supplied and the usable, clean square footage may make it necessary for us to request more leather after COL is received.

Yardage requirements shown are based on 54" width plain material. If fabric design requires vertical/top out, Customer Service should be consulted for additional yards required. If fabric is under 54"W, refer to fabric database at www.coalesse.com.

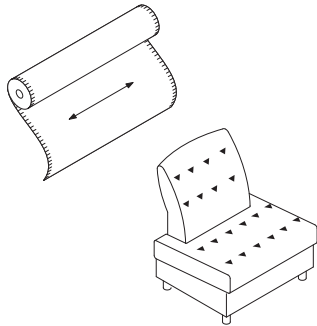
Excess COM/COL Policy

All excess COM/COL will be disposed of after order is completed unless prior arrangements have been made with Coalesse Customer Service. Fedex account number and address to ship to must be referenced. Excess WILL NOT be returned with shipment of furniture.

Customer's Own Material

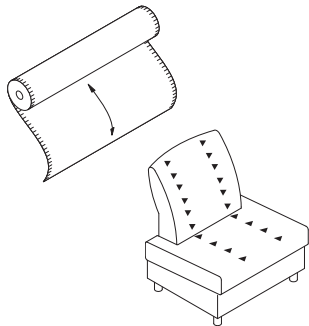
Cutting Direction Guidelines

Cutting direction is based on the fabric width and the way the fabric is cut from the roll and applied to Coalesse products. There are two cutting directions: railroaded or horizontal.



Tip: Arrows on the above drawings indicate fabric direction.

Horizontal or railroaded (across roll, warp horizontal) means fabric is cut across the roll; selvages are on the top and bottom.



Tip: Arrows on the above drawings indicate fabric direction.

Vertical or top out (down roll, warp vertical) means fabric is cut in the same direction it is woven; selvages are on the left and right sides.

Fabric Matrix Steelcase Standard Fabrics

Note: Coalesse reserves the right to reject fabrics when necessary if the quality or construction is not satisfactory for intended use. For most up to date information on fabric usage please check the fabric database on www.coalesse.com.

Legend

- = Not available
- = Available
- ▶ See specification pages in the *Coalesse Specification Guides* for details.

| | Steelcase Fabrics | | | | | | | | | | | |
|---------------------------|------------------------|--------------|-------------------------|-------------------------------|--------------------|-------------------|------------------|------------------|---|-----------------|---------------|--------------|
| | Jacks Group 1 E | Link Group 1 | Cogent: Connect Group 2 | Dovetail by DesignTex Group 2 | Foundation Group 2 | New Black Group 2 | SoftNext Group 2 | Stand In Group 2 | Billiard Multi-Use by DesignTex Group 3 | Bo Peep Group 5 | Remix Group 5 | Silk Group 5 |
| Await | ■ | ■ | • | ■ | ■ | ■ | ■ | ■ | ■ | ■ | ■ | ■ |
| Bindu | ■ | ■ | ■ | ■ | ■ | ■ | ■ | ■ | ■ | ■ | ■ | ■ |
| Bob | ■ | ■ | ■ | ■ | ■ | ■ | ■ | ■ | ■ | ■ | ■ | ■ |
| Capa | ■ | ■ | ■ | ■ | ■ | ■ | ■ | ■ | ■ | ■ | ■ | ■ |
| Chord | ■ | ■ | ■ | ■ | ■ | ■ | ■ | ■ | ■ | ■ | ■ | ■ |
| Circa | ■ | ■ | • | ■ | ■ | ■ | ■ | ■ | ■ | ■ | ■ | ■ |
| Coalesse Ensemble Lounge | ■ | ■ | ■ | ■ | • | ■ | ■ | • | ■ | ■ | ■ | ■ |
| Coalesse Ensemble Screens | • | • | • | ■ | • | • | ■ | • | ■ | • | • | • |
| Coupe | ■ | ■ | ■ | ■ | ■ | ■ | ■ | ■ | ■ | ■ | ■ | ■ |
| Davos | ■ | ■ | ■ | ■ | ■ | ■ | ■ | ■ | ■ | ■ | ■ | ■ |
| Enea | ■ | ■ | ■ | ■ | ■ | ■ | ■ | ■ | ■ | ■ | ■ | ■ |
| Enea Lottus | ■ | ■ | ■ | ■ | ■ | ■ | ■ | ■ | ■ | ■ | ■ | ■ |
| Enea Altzo943 | ■ | ■ | ■ | ■ | ■ | ■ | ■ | ■ | ■ | ■ | ■ | ■ |
| Exponents, Benches | ■ | ■ | ■ | ■ | ■ | ■ | ■ | ■ | ■ | ■ | ■ | ■ |
| Hosu | ■ | ■ | ■ | ■ | • | ■ | ■ | • | ■ | ■ | ■ | ■ |
| Joel | ■ | ■ | ■ | ■ | ■ | ■ | ■ | ■ | ■ | ■ | ■ | ■ |
| Kathryn | ■ | ■ | ■ | ■ | ■ | ■ | ■ | ■ | ■ | ■ | ■ | ■ |
| Lagunitas Cushion | ■ | ■ | ■ | ■ | ■ | ■ | ■ | ■ | ■ | ■ | ■ | ■ |
| Lox | ■ | ■ | • | ■ | ■ | ■ | ■ | ■ | ■ | ■ | ■ | ■ |
| Marien152 | ■ | ■ | ■ | ■ | ■ | ■ | ■ | • | ■ | ■ | ■ | ■ |
| Massaud Lounge | ■ | ■ | ■ | ■ | ■ | ■ | ■ | ■ | ■ | ■ | ■ | ■ |
| Massaud Conference | ■ | ■ | ■ | ■ | ■ | ■ | ■ | ■ | ■ | ■ | ■ | ■ |
| Millbrae Contract | ■ | ■ | ■ | ■ | ■ | ■ | ■ | ■ | ■ | ■ | ■ | ■ |
| Millbrae Lifestyle | ■ | ■ | • | ■ | ■ | ■ | ■ | ■ | ■ | ■ | ■ | ■ |
| Montara650 | ■ | ■ | ■ | ■ | ■ | ■ | ■ | ■ | ■ | ■ | ■ | ■ |
| Passerelle | ■ | ■ | ■ | ■ | ■ | ■ | ■ | ■ | ■ | ■ | ■ | ■ |
| Ripple | ■ | ■ | • | ■ | ■ | ■ | ■ | ■ | ■ | ■ | ■ | ■ |
| Sidewalk | ■ | ■ | ■ | ■ | ■ | ■ | ■ | ■ | ■ | ■ | ■ | ■ |
| Sistema Lounge System | ■ | ■ | • | ■ | ■ | ■ | ■ | ■ | ■ | ■ | ■ | ■ |
| SW_1 | ■ | ■ | ■ | ■ | ■ | ■ | ■ | • | ■ | ■ | ■ | • |
| Switch | ■ | ■ | ■ | ■ | ■ | ■ | ■ | ■ | ■ | ■ | ■ | ■ |
| Thoughtful | ■ | ■ | ■ | ■ | ■ | ■ | ■ | ■ | ■ | ■ | ■ | ■ |
| Together | ■ | ■ | ■ | ■ | ■ | ■ | ■ | ■ | ■ | ■ | ■ | ■ |
| Visalia | ■ | ■ | ■ | ■ | ■ | ■ | ■ | ■ | ■ | ■ | ■ | ■ |
| Wrapp | ■ | ■ | • | ■ | ■ | ■ | ■ | ■ | ■ | ■ | ■ | ■ |

E = Excluded

The above Steelcase fabrics are available as standard without a backer on select Coalesse product lines. For those product lines that are noted as unavailable, it may be specifiable with a backer as a Select Surface fabric. Additional Steelcase fabrics are available through the Select Surface program. Please consult the Coalesse Fabric Database for availability.

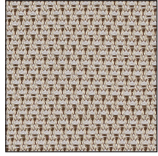
Disclaimer: Coalesse is pleased to provide this information. However, even after preliminary approval, Coalesse reserves the right to reject fabrics/leathers when necessary if the quality or construction is not satisfactory for the item it is intended for use on. Coalesse reserves the right to evaluate data daily and make any necessary changes or improvements to the information provided. Textile recommendations do not imply a warranty for the textiles. The textile manufacturer provides all warranties for textiles. All trademarks and trade names are the property of the different manufacturers. All pricing quotes for product should be obtained from your local Sales Representative or a Coalesse Customer Service Representative. Recommendations such as backing and CAL 133 will require additional cost and may require additional lead-time. All specifications are subject to change without notice.

Upholstery Palette Coalesse Knit

Note: Coalesse reserves the right to reject fabrics when necessary if the quality or construction is not satisfactory for intended use. For most up to date information on fabric usage please check the fabric database on www.coalesse.com.

Group 1

SW_1



Sand
5KG0



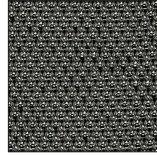
Silver
5KG1



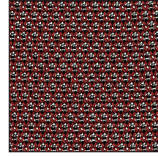
Black
5KG3



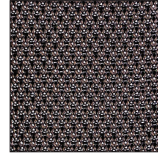
Ivory
5KG4



Coal
5KG5



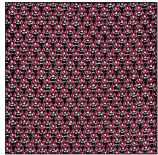
Fire
5KG6



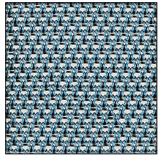
Pewter
5KG9



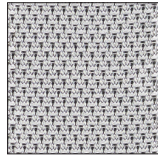
Ice
5KH0



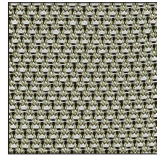
Currant
5KH1



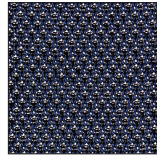
Ocean
5KH2



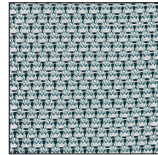
Silver Grey
5KH3



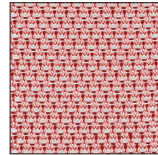
Olive
5KH4



Blue Ink
5KH5



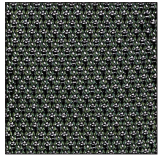
Blue Bird
5KH6



Blush
5KH7

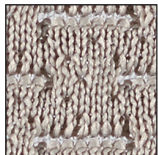


Goldenrod
5KH8

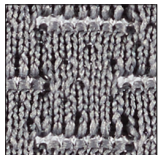


Leaf
5KH9

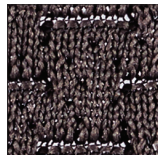
Lagunitas Focus Nook and Lounge System



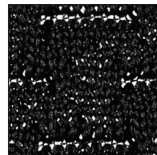
Sand
5K50



Silver
5K51



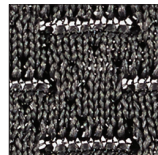
Pewter
5K52



Black
5K54



Ivory
5K58



Coal
5K59



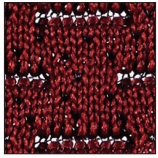
Silver Grey
5K70

Upholstery Palette Coalesse Knit *continued*

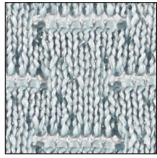
Note: Coalesse reserves the right to reject fabrics when necessary if the quality or construction is not satisfactory for intended use. For most up to date information on fabric usage please check the fabric database on www.coalesse.com.

Group 2

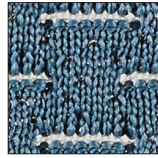
Lagunitas Focus Nook and Lounge System



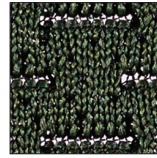
Fire
5K55



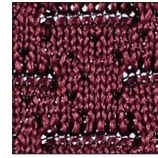
Ice
5K60



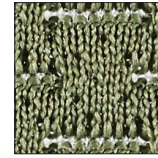
Ocean
5K61



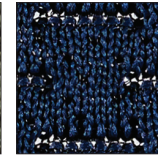
Leaf
5K63



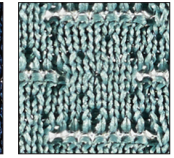
Currant
5K67



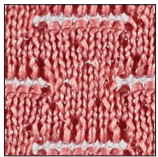
Olive
5K71



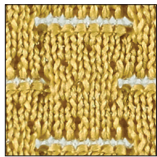
Blue Ink
5K72



Blue Bird
5K73



Blush
5K74



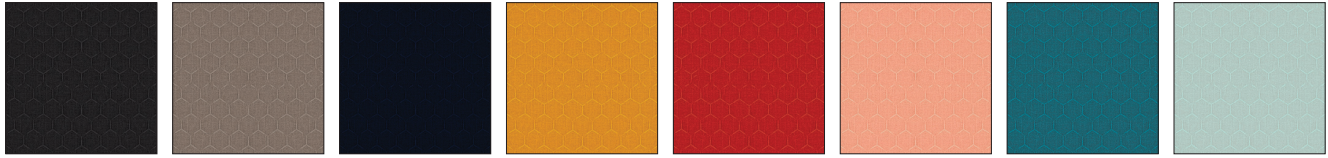
Goldenrod
5K75

Upholstery Palette Coalesse Fabric

Note: Coalesse reserves the right to reject fabrics when necessary if the quality or construction is not satisfactory for intended use. For most up to date information on fabric usage please check the fabric database on www.coalesse.com.

Group 4

Hexa – For use on Hosu products only



Dark Grey
CL50

Light Grey
CL51

Blue
CL52

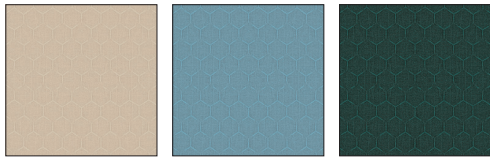
Yellow
CL55

Saffron
CL70

Rose Quartz
CL71

Lagoon
CL72

Sea Salt
CL73



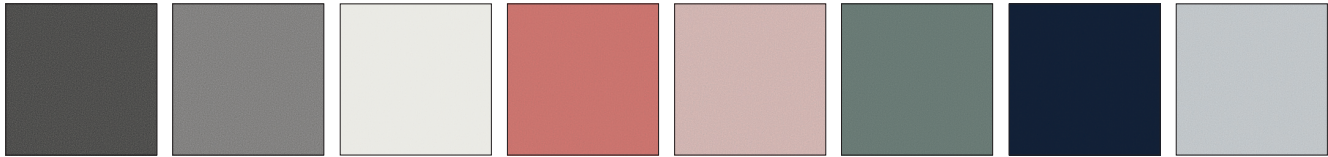
Steam
CL74

Ocean
CL75

Sage
CL76

Group 5

Fusion – For use on Massaud work lounge



Caviar
CL60

Graphite
CL62

Steam*
CL64

Terracotta
CL80

Copper
CL81

Sage
CL82

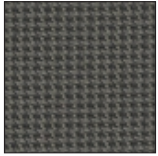
Blue Ink
CL83

Blue Steel
CL84

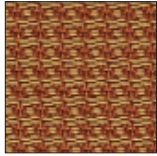
Upholstery Palette Steelcase Fabric

Group 1

Jacks E



Taupe
5B61



Camel
5B63

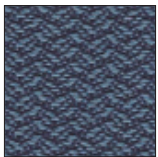


Pewter
5B64



Midnight
5B70

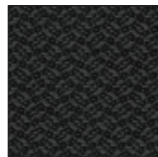
Link



Blue
5A24



Navy
5A25



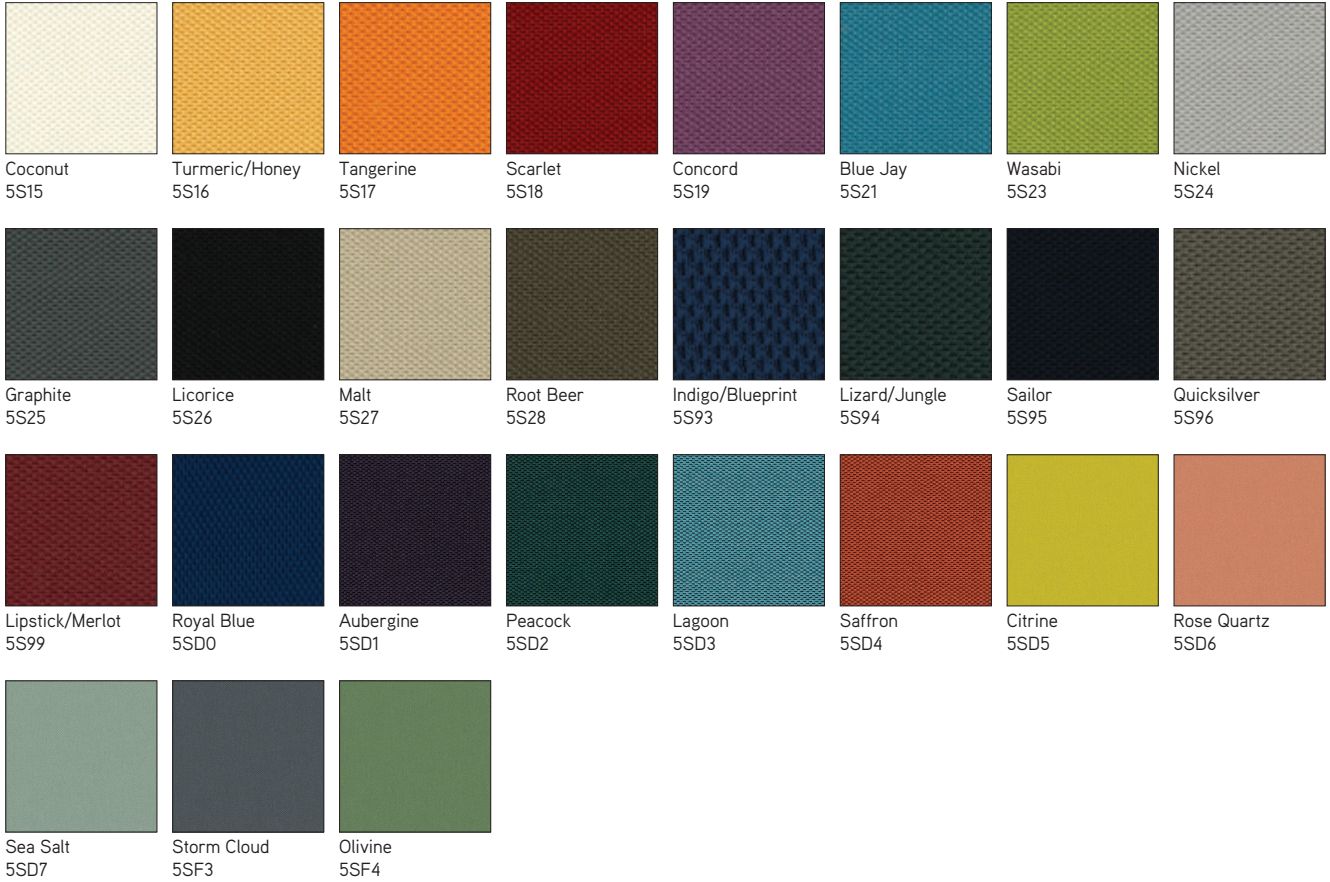
Black
5A27

E = Excluded

Upholstery Palette Steelcase Fabric

Group 2

Cogent: Connect



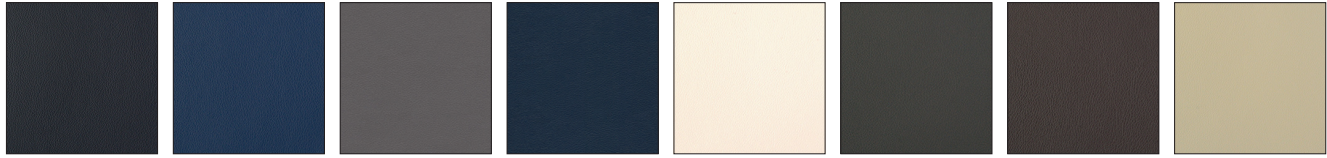
Dovetail by Designtex



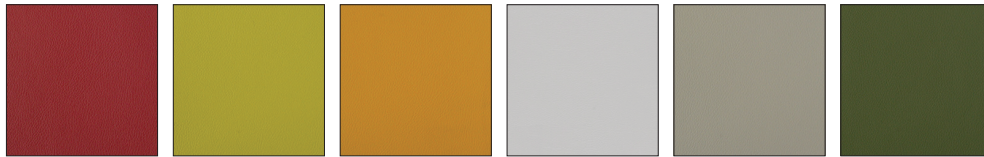
Upholstery Palette Steelcase Fabric *continued*

Group 2

Foundation



Black 5875 Navy 5876 Foggy Night 5877 Sailor 5878 Ivory 5879 Seal 5880 Peat 5881 New Sand 5882



Cranberry 5883 Spring 5884 Honey 5885 Folkstone 5886 Pebble 5887 Oregano 5888

New Black



Jack 5J08 James 5J09 Harley 5J12

Upholstery Palette Steelcase Fabric

Group 2

SoftNext



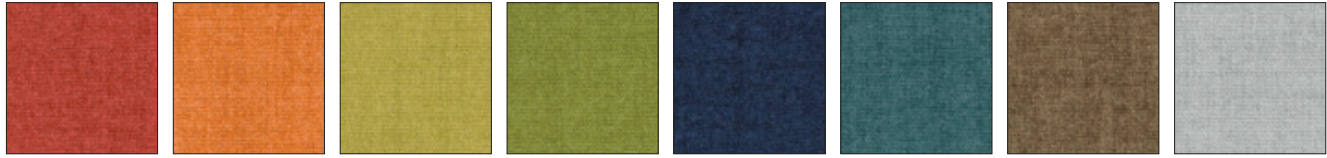
Stand In



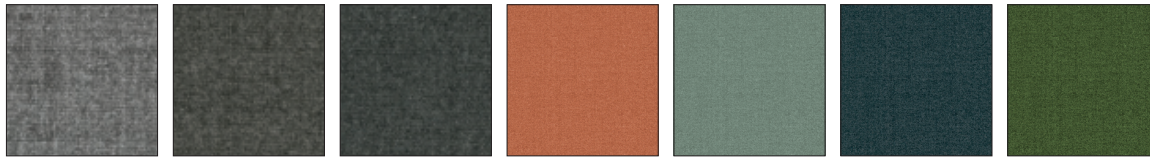
Upholstery Palette Steelcase Fabric *continued*

Group 3

Billiard Multi-Use by Designtex



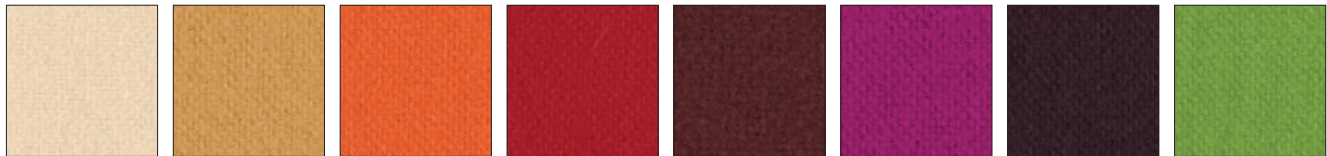
Poppy 5H11 Tangelo 5H12 Citrine/Citron 5H13 Avocado 5H14 Indigo 5H16 Mallard 5H17 Teak 5H18 Cumulus 5H19



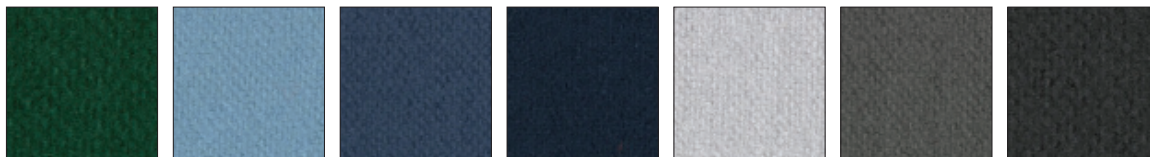
Pewter 5H20 Gunmetal 5H21 Ink 5H22 Rose Quartz 5H23 Sea Salt 5H24 Storm Cloud 5H25 Olivine 5H26

Group 5

Bo Peep



Bone 5G67 Honey Mustard 5G72 Marmalade 5G73 Picnic 5G74 Pinot 5G75 Bloom 5G76 Grapevine 5G77 Artichoke 5G79



Serpent 5G80 Carolina 5G81 Blue Bonnet 5G82 Nautical 5G83 Gravel 5G84 Sharkskin 5G85 Kohl 5G86

Upholstery Palette Steelcase Fabric

Group 5

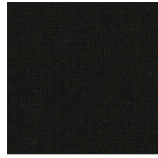
Remix



Rust
RE01



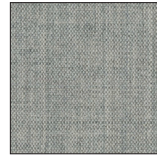
Pebble
RE03



Dark Chocolate
RE04



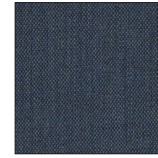
Linen Beige
RE06



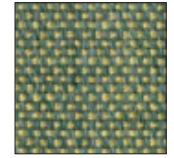
Concrete
RE08



Sky Blue
RE09



Blue Jean
RE10

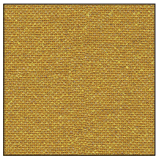


Ivy Green
RE11

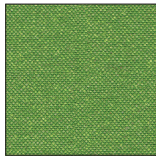


Night Blue
RE13

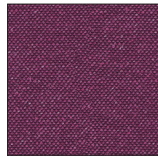
Silk



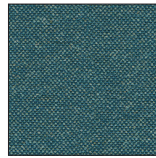
Dijon
5L31



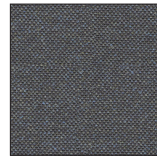
Seaweed
5L32



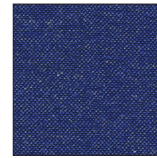
Boysenberry
5L33



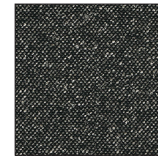
Marina
5L35



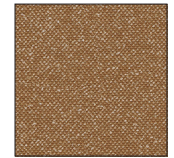
Heather Blue
5L36



Blue Raspberry
5L37



Cauldron
5L38



Flaxen
5L39

Leather/Faux

Leather

Elmosoft and Elmorustical Leather Care

Only the finest hides are used for Elmo leather. Expect some color variations from hide to hide due to the aniline state of the product. Color fading may occur if leather is exposed to direct or intense light. Care is required to allow this product to achieve the rich natural patina that beautiful natural leather develops. The hallmarks of this leather include some naturally occurring markings, such as healed scars, insect bites, stretch marks, and fat wrinkles. Elmorustical's leather treatment is very natural with little protection from spills or body oils. This rich leather will exhibit stains and oils through normal use. Coalesse is not responsible for discoloration, spotting, or staining on this leather.

Special Color Match Leather

Coalesse can provide a special color match in its leather to any supplier's leather color, paint color, carpet color, wallpaper color, etc. Sample to match must be submitted to Coalesse with purchase order. Sample for approval can be supplied if requested.

Note: Minimum order 2,500 sq. ft.

Special Fabric Applications*

Backing*

• Backing information is found on each product page in the Coalesse Specification Guides. Select this option when ordering your product to have backing applied. Price varies by product according to yardage it requires.

*Prices subject to change without notice and an additional two week lead time will apply for 54" wide fabrics. Wider fabrics will require four weeks additional lead time.

Elmo Leather

Coalesse uses leathers that are provided by Elmo of Sweden. Elmosoft is a full grain, aniline dyed, semi-aniline finish. With Elmosoft leather, now recyclable and chromium-free, you have the opportunity to bid on green projects when requested. Elmosoft leathers are never corrected, buffed, or altered in any way. Coalesse purchases only original full grain leathers. The quality of this genuine leather can be felt in the hand immediately. Other leathers are often stiff because of the amount of pigment needed to cover the imperfections of an inferior hide. Using leather of a low quality affects the overall quality of the furniture it is upholstered on. You can feel confident in leather purchased from Coalesse.

Elmosoft

Group 2

- L110 Maritime Blue **X10/26**
- L111 Midnight Blue **X10/26**
- L112 Ebony
- L113 Gunmetal
- L114 Mica
- L115 Dove Grey
- L116 Plum Pleasure **X10/26**
- L122 Truffle **X10/26**
- L128 Red Birch
- L133 Espresso **X10/26**
- L134 Ruby **X10/26**
- L139 Cinder **X10/26**
- L140 Garnet **X10/26**
- L143 Pecan **X10/26**
- L144 Chamois
- L146 Russet **X10/26**
- L147 Saddle
- L151 White **X10/26**
- L709 Sugar **X10/26**
- L711 Parchment **X10/26**
- L717 Cameo
- L723 Storm **X10/26**
- L730 Hunter
- L743 Forest Green
- L747 Cigar
- L749 Beaver **X10/26**
- L750 Bluffstone **X10/26**
- L755 Peanut Butter **X10/26**
- L758 Mustard **X10/26**
- L762 Canvas **X10/26**
- L763 Macadamia **X10/26**
- L770 Cadet **X10/26**
- L772 Timberwolf **X10/26**
- L773 Chalice **X10/26**
- L774 Oil
- L775 Coyote **X10/26**

Elmorustical and Elmotique Leather

Elmorustical and Elmotique are a full-top grain, aniline dyed leather.

Elmorustical has a grain which varies in structure and offers outstanding comfort. It is an aniline leather with all the distinct features of the natural hide.

Elmotique is a thinner aniline leather with a batique-effect and displays all the features possessed by the original hide.

Only the finest hides are used for Elmorustical and Elmotique leathers. Expect some color variations from hide to hide due to the aniline state of the product. Color fading may occur if leather is exposed to direct or intense light. Care is required to allow this product to achieve the rich natural patina that beautiful leather develops. The hallmarks of this leather include some naturally occurring markings such as healed scars, insect bites, stretch marks, and fat wrinkles. Elmorustical and Elmotique's leather treatment is very natural with little protection from spills or body oils. This rich leather will exhibit stains and oils through normal use. Coalesse is not responsible for discoloration, spotting, or staining on this leather.

Group 2

Elmorustical

- L318 Loam
- L319 Ebony
- L321 Beige
- L323 Buff
- L325 Camel
- L326 Charbrown
- L330 Flame
- L332 Honey
- L334 Mist Green
- L337 Russet
- L338 Rust
- L363 Tendril
- L364 Fog
- L365 Sunflower
- L366 Terra Cotta
- L367 Cadet
- L368 Marine
- L369 Mallard
- L370 Smoke
- L371 Merlot
- LD54 Twilight

Elmotique

- L311 Flaxen
- L312 Earth
- L313 Clay
- L314 Blue Mountain
- L315 Juniper

Faux Leather

Coalesse offers a variety of faux leathers. Not all faux leathers are available on all products, check seating matrix on 21 to determine availability.

Group 5

Destiny

- DY01 Black
- DY02 Raisin
- DY03 Blueberry
- DY04 Chestnut
- DY05 Cedar
- DY06 Black Rose
- DY07 Wine
- DY08 Patine
- DY09 Dune
- DY10 Truffle
- DY11 Oak
- DY12 Newport
- DY13 Evergreen
- DY14 Storm
- DY15 Juniper
- DY16 Olive
- DY17 Mocha
- DY18 Ash
- DY21 Butter
- DY23 Deep Red
- DY24 Eggshell
- DY26 Parchment
- DY27 Periwinkle
- DY30 Royal Purple
- DY31 Saddle
- DY32 Cactus Green
- DY33 Cypress
- DY34 Mink
- DY35 Football
- DY36 Root

X10/26 = Last order entry
October 18, 2026

Leather/Faux

Finesse

- : AM00 White Cloud
- : AM01 Gelato
- : AM02 Winter White
- : AM04 Mushroom
- : AM06 Charbrown
- : AM08 Iceberg
- : AM09 Gravel
- : AM10 Colonial Blue
- : AM25 Barley
- : AM26 Stucco
- : AM27 Beaver
- : AM28 Otter
- : AM65 Bordeaux
- : AM66 Navy
- : AM67 Cinder
- : AM80 Cameo
- : AM81 Oyster Grey
- : AM83 Taupe
- : AM85 Chestnut
- : AM87 Indigo
- : AM88 Bone
- : AM89 Jet Black
- : AM92 Burgundy
- : AM93 Hunter Green
- : AM98 Oxford Brown

Ovation

- : O500 Dark Brown
- : O501 Light Grey
- : O502 Sage
- : O503 Indigo
- : O504 Lilac
- : O505 Terra
- : O506 Moss
- : O507 Teal
- : O508 Stone
- : O509 Cappuccino

Panache

- : P800 Ebony
- : P801 Cactus
- : P802 Sherwood
- : P803 Teal Blue
- : P804 Sweet Sage
- : P805 Coffee
- : P806 True Taupe
- : P807 Cashew
- : P808 Acorn
- : P809 Redwood
- : P810 Exotic Orchid
- : P811 Maize
- : P812 Chartreuse
- : P813 Regal Blue

Prestige

- : AFA1 Onyx
- : AFB2 Soft White
- : AFC3 Saxe Blue
- : AFD3 Buff
- : AFDG Antique White
- : AFE1 Sandstone
- : AFH1 Pecan
- : AFH2 Buttercream
- : AF11 Havana
- : AF12 Brick
- : AFL8 French Grey
- : AFP1 Willow
- : AFP2 Boxwood Green
- : AFPA Tree Moss
- : AFPC Celadon
- : AFS3 Wild Plum

Group 6

Brisa

- : BR01 Black Onyx
- : BR04 Truffle
- : BR06 Ash
- : BR07 Sage
- : BR08 Celery
- : BR09 Sterling Blue
- : BR10 Night Navy
- : BR11 Cambridge Blue
- : BR12 Abyss
- : BR14 Pompeia
- : BR16 Cinnabar
- : BR18 New Sand
- : BR20 White
- : BR21 Moccasin
- : BR22 Buckskin
- : BR24 Mineral
- : BR25 Skyway
- : BR26 Iron
- : BR27 Stormy
- : BR28 Esmeralda
- : BR29 Seaweed
- : BR30 Bone
- : BR31 Caramel
- : BR32 Bridle
- : BR33 Moon

Destiny Perforated

- : DP01 Black
- : DP02 Raisin
- : DP03 Blueberry
- : DP04 Chestnut
- : DP05 Cedar
- : DP06 Black Rose
- : DP07 Wine
- : DP08 Patine
- : DP09 Dune
- : DP10 Truffle
- : DP11 Oak
- : DP12 Newport
- : DP13 Evergreen
- : DP14 Storm
- : DP15 Juniper
- : DP16 Olive
- : DP17 Mocha
- : DP21 Butter
- : DP23 Deep Red
- : DP24 Eggshell
- : DP26 Parchment
- : DP27 Periwinkle
- : DP30 Royal Purple
- : DP31 Saddle
- : DP32 Cactus Green
- : DP33 Cypress
- : DP34 Mink
- : DP35 Football
- : DP36 Root

Elegance

- : EL01 Ivory
- : EL02 Cream
- : EL03 Char
- : EL04 Saddle
- : EL05 Dune
- : EL06 Camel
- : EL07 Sage
- : EL08 Gray
- : EL09 Walnut
- : EL10 Burgundy
- : EL11 Green
- : EL12 Navy
- : EL13 Black

Finesse Perforated

- : AP00 White Cloud
- : AP01 Gelato
- : AP02 Winter White
- : AP04 Mushroom
- : AP06 Charbrown
- : AP08 Iceberg
- : AP09 Gravel
- : AP10 Colonial Blue
- : AP25 Barley
- : AP26 Stucco
- : AP27 Beaver
- : AP28 Otter
- : AP65 Bordeaux
- : AP66 Navy
- : AP67 Cinder
- : AP80 Cameo
- : AP81 Oyster Grey
- : AP83 Taupe
- : AP85 Chestnut
- : AP87 Indigo
- : AP88 Bone
- : AP89 Jet Black
- : AP92 Burgundy
- : AP93 Hunter Green
- : AP98 Oxford Brown

Panache Perforated

- : PR00 Ebony
- : PR01 Cactus
- : PR02 Sherwood
- : PR03 Teal Blue
- : PR04 Sweet Sage
- : PR05 Coffee
- : PR06 True Taupe
- : PR07 Cashew
- : PR08 Acorn
- : PR09 Redwood
- : PR10 Exotic Orchid
- : PR11 Maize
- : PR12 Chartreuse
- : PR13 Regal Blue

Prestige Perforated

- : APA1 Onyx
- : APB2 Soft White
- : APC3 Saxe Blue
- : APD3 Buff
- : APDG Antique White
- : APE1 Sandstone
- : APH1 Pecan
- : APH2 Buttercream
- : API1 Havana
- : API2 Brick
- : APL8 French Grey
- : APP1 Willow
- : APP2 Boxwood Green
- : APPA Tree Moss
- : APPC Celadon
- : APS3 Wild Plum

Cut Yardage Net Price List

| FABRIC NAME | Under 60 Yards | 60 Yards & Over | |
|--|-------------------|------------------|------------------|
| Elegance® | \$133.00/yd. | \$122.00/yd. | |
| Finesse® | \$80.00/yd. | \$79.00/yd. | |
| Finesse® Perforated (min. 5 yds) | \$96.00/yd. | \$95.00/yd. | |
| Prestige® | \$87.00/yd. | \$82.00/yd. | |
| Prestige® Perforated (min. 5 yds) | \$104.00/yd. | \$100.00/yd. | |
| Destiny® | \$88.00/yd. | \$84.00/yd. | |
| Destiny® Perforated (min. 5 yds) | \$106.00/yd. | \$101.00/yd. | |
| Ovation | \$88.00/yd. | \$82.00/yd. | |
| Panache | \$88.00/yd. | \$84.00/yd. | |
| LEATHER NAME | Under 500 sq. ft. | 500-1000 sq. ft. | Over 1000 sq.ft. |
| Elmosoft | \$11.00/sq. ft. | \$9.00/sq. ft. | \$9.00/sq. ft. |
| Elmorustical* | \$17.00/sq. ft. | \$11.00/sq. ft. | \$10.00/sq. ft. |

*See page 18 for Elmorustical Leather care.

ORDERING INFORMATION

- Minimum Order Requirements
- Fabric: 1 yd. - 1/8 yd. increments.
- Leather: 1 full hide (avg. sq. ft./hide - 50).
- All orders will be filled in full hides only.
- Overage will be invoiced accordingly.
- Cancelled textile orders are subject to a 30% restocking fee. Order must be cancelled 5 days before ship date.
- Special match leather: 2,500 sq. ft. minimum (Check delivery date)
- The embossing techniques used on Novasuede Perforated, to achieve these looks involve very high temperatures. Color and shade may vary slightly based on the fiber density being embossed.

Due to the natural processes of dying, sanding and embossing necessary to achieve these special looks, actual production may vary slightly in appearance from the swatches shown.

COALESSE TEXTILE WARRANTY

Coalesse textile merchandise is produced in accordance with Coalesse high standards. Coalesse does not guarantee, warrant or accept any responsibility whatsoever by reason of its fabrics or leathers fading, wearing, cracking, shrinking, stretching, tearing, seam slippage, alteration in color due to any finish treatment (flameproofing, stain repellent, etc.) or discoloration from liquid contact. Printed textiles are not warranted against irregularity in register. Coalesse is not responsible for dye lot differences or discrepancies in widths of fabrics. Coalesse does not guarantee, warrant or represent an exact color match to cuttings, tabs, memos or sample cards. Coalesse does not warrant exact matching of color or grain of leather. Leather hides may contain certain natural marks, scars, scratches, wrinkles and shade variations within hides, etc., considered by leather tanneries and Coalesse to be inherent characteristics part of the natural beauty of leather and the size or location of such markings cannot be controlled. In any event, upon inspection, Coalesse's responsibility shall be limited to either replacement of merchandise or refund of purchase price at Coalesse's option. The foregoing constitutes the sole and exclusive remedy of the customer. Coalesse is not responsible for the application or installation of our products. In no event shall Coalesse be responsible for any consequential damages or any charges, costs, expenses, or obligations other than as expressly herein set forth. Coalesse makes no other warranties, expressed or implied, as to any product sold by Coalesse. All other warranties (including any warranty of merchantability or fitness for any particular purpose) are hereby excluded.



For Canadian Pricing

Multiply U.S. Price by the Canadian price factor.

► See page 1 for details.

Leather and Faux Leather Matrix

Note: Coalesse reserves the right to reject fabrics when necessary if the quality or construction is not satisfactory for intended use. For most up to date information on fabric usage please check the fabric database on www.coalesse.com.

| Legend | Elmosoft Group 2 | Elmorustical Group 2 | Elmotique Group 2 | Destiny Group 5 | Finesse Group 5 | Ovation Group 5 | Panache Group 5 | Prestige Group 5 | Brisa Group 6 | Destiny Perforated Group 6 | Elegance Group 6 | Finesse Perforated Group 6 | Panache Perforated Group 6 | Prestige Perforated Group 6 |
|-----------------------|------------------|----------------------|-------------------|-----------------|-----------------|-----------------|-----------------|------------------|---------------|----------------------------|------------------|----------------------------|----------------------------|-----------------------------|
| Await | ■ | ■ | • | ■ | ■ | ■ | ■ | ■ | ■ | ■ | ■ | ■ | ■ | ■ |
| Bindu | ■ | ■ | • | ■ | ■ | ■ | ■ | ■ | ■ | ■ | ■ | ■ | ■ | ■ |
| Bob | ■ | ■ | • | ■ | ■ | ■ | ■ | ■ | ■ | • | ■ | • | ■ | • |
| Capa | ■ | ■ | • | ■ | ■ | ■ | ■ | ■ | ■ | ■ | ■ | ■ | ■ | ■ |
| Chord | ■ | ■ | • | ■ | ■ | ■ | ■ | ■ | ■ | ■ | ■ | ■ | ■ | ■ |
| Circa | ■ | ■ | • | ■ | ■ | ■ | ■ | ■ | ■ | ■ | ■ | ■ | ■ | ■ |
| Coupe | ■ | ■ | • | ■ | ■ | ■ | ■ | ■ | ■ | ■ | ■ | ■ | ■ | ■ |
| Davos | ■ | ■ | • | ■ | ■ | ■ | ■ | ■ | ■ | • | ■ | • | • | • |
| Enea | ■ | ■ | • | ■ | ■ | ■ | ■ | ■ | ■ | ■ | ■ | ■ | ■ | ■ |
| Enea Lottus | ■ | ■ | ■ | ■ | ■ | ■ | ■ | ■ | ■ | • | ■ | • | • | • |
| Enea Café Wood Stool | ■ | ■ | ■ | ■ | ■ | ■ | ■ | ■ | ■ | ■ | ■ | ■ | ■ | ■ |
| Enea Altzo943 | ■ | ■ | ■ | ■ | ■ | ■ | ■ | ■ | ■ | • | ■ | • | • | • |
| Exponents (Benches) | ■ | ■ | • | ■ | ■ | ■ | ■ | ■ | ■ | • | ■ | • | • | • |
| Joel | ■ | ■ | • | ■ | ■ | ■ | ■ | ■ | ■ | • | ■ | • | • | • |
| Kathryn | ■ | ■ | ■ | ■ | ■ | ■ | ■ | ■ | ■ | ■ | ■ | ■ | ■ | ■ |
| Lagunitas | ■ | ■ | • | ■ | ■ | ■ | ■ | ■ | ■ | ■ | ■ | ■ | ■ | ■ |
| Lox | ■ | ■ | ■ | ■ | ■ | ■ | ■ | ■ | ■ | • | ■ | • | • | • |
| Marien152 | ■ | ■ | • | ■ | ■ | ■ | ■ | ■ | ■ | • | ■ | • | ■ | • |
| Massaud | ■ | ■ | • | • | ■ | ■ | ■ | ■ | ■ | • | ■ | ■ | ■ | ■ |
| Millbrae Contract | ■ | ■ | • | ■ | ■ | ■ | ■ | ■ | ■ | ■ | ■ | ■ | ■ | ■ |
| Millbrae Lifestyle | ■ | ■ | ■ | ■ | ■ | ■ | ■ | ■ | ■ | ■ | ■ | ■ | ■ | ■ |
| Montara650 | ■ | ■ | • | ■ | ■ | ■ | ■ | ■ | ■ | • | ■ | • | ■ | • |
| Passerelle | ■ | ■ | • | ■ | ■ | ■ | ■ | ■ | ■ | ■ | ■ | ■ | ■ | ■ |
| Potrero 415 Light* | ■ | • | • | • | • | • | • | • | • | • | • | • | • | • |
| Ripple | ■ | ■ | • | ■ | ■ | ■ | ■ | ■ | ■ | ■ | ■ | ■ | ■ | ■ |
| Sidewalk | ■ | ■ | • | ■ | ■ | ■ | ■ | ■ | ■ | ■ | ■ | ■ | ■ | ■ |
| Sistema Lounge System | ■ | • | • | ■ | ■ | ■ | ■ | ■ | ■ | • | ■ | • | • | • |
| SW_1 | ■ | • | ■ | ■ | ■ | ■ | ■ | ■ | ■ | • | ■ | • | • | • |
| Switch | ■ | ■ | • | ■ | ■ | ■ | ■ | ■ | ■ | ■ | ■ | ■ | ■ | ■ |
| Thoughtful | ■ | ■ | • | ■ | ■ | ■ | ■ | ■ | ■ | ■ | ■ | ■ | ■ | ■ |
| Together | □ | □ | • | □ | □ | ■ | □ | □ | □ | • | □ | • | • | • |
| Visalia | ■ | ■ | • | ■ | ■ | ■ | ■ | ■ | ■ | ■ | ■ | ■ | ■ | ■ |
| Wrapp | ■ | ■ | • | ■ | ■ | ■ | ■ | ■ | ■ | ■ | ■ | ■ | ■ | ■ |

*Curated palette of Elmosoft Leather is available.

Disclaimer: Coalesse is pleased to provide this information. However, even after preliminary approval, Coalesse reserves the right to reject fabrics/leathers when necessary if the quality or construction is not satisfactory for the item it is intended for use on. Coalesse reserves the right to evaluate data daily and make any necessary changes or improvements to the information provided. Textile recommendations do not imply a warranty for the textiles. The textile manufacturer provides all warranties for textiles. All trademarks and trade names are the property of the different manufacturers. All pricing quotes for product should be obtained from your local Sales Representative or a Coalesse Customer Service Representative. Recommendations such as backing and CAL 133 will require additional cost and may require additional lead-time. All specifications are subject to change without notice.

Leather Palette

Note: Coalesse reserves the right to reject fabrics when necessary if the quality or construction is not satisfactory for intended use. For most up to date information on fabric usage please check the fabric database on www.coalesse.com.

► See *Leather and Faux Leather Matrix* for availability by product list, page 21.

Group 2

Elmosoft

| | | | | | | | |
|-------------------------------------|-------------------------------------|----------------------------------|-------------------------------------|-------------------------------|------------------------------|-------------------------------------|-------------------------------|
| | | | | | | | |
| Maritime Blue L110 X10/26 | Midnight Blue L111 X10/26 | Ebony L112 | Gunmetal L113 | Mica L114 | Dove Grey L115 | Plum Pleasure L116 X10/26 | Truffle L122 X10/26 |
| | | | | | | | |
| Red Birch L128 | Espresso L133 X10/26 | Ruby L134 X10/26 | Cinder L139 X10/26 | Garnet L140 X10/26 | Pecan L143 X10/26 | Chamois L144 | Russet L146 X10/26 |
| | | | | | | | |
| Saddle L147 | White L151 X10/26 | Sugar L709 X10/26 | Parchment L711 X10/26 | Cameo L717 | Storm L723 X10/26 | Hunter L730 | Forest Green L743 |
| | | | | | | | |
| Cigar L747 | Beaver L749 X10/26 | Bluffstone L750 X10/26 | Peanut Butter L755 X10/26 | Mustard L758 X10/26 | Canvas L762 X10/26 | Macadamia L763 X10/26 | Cadet L770 X10/26 |
| | | | | | | | |
| Timberwolf L772 X10/26 | Chalice L773 X10/26 | Oil L774 | Coyote L775 X10/26 | | | | |

X10/26 = Last order entry
October 18, 2026

Leather Palette

Note: Coalesse reserves the right to reject fabrics when necessary if the quality or construction is not satisfactory for intended use. For most up to date information on fabric usage please check the fabric database on www.coalesse.com.

► See *Leather and Faux Leather Matrix* for availability by product list, page 21.

Group 2

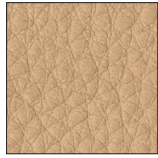
Elmorustical



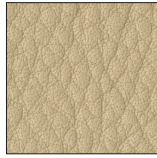
Loam
L318



Ebony
L319



Beige
L321



Buff
L323



Camel
L325



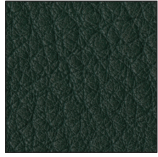
Charbrown
L326



Flame
L330



Honey
L332



Mist Green
L334



Russet
L337



Rust
L338



Tendrill
L363



Fog
L364



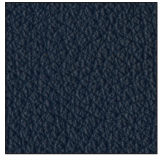
Sunflower
L365



Terra Cotta
L366



Cadet
L367



Marine
L368



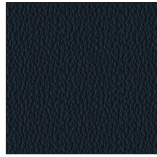
Mallard
L369



Smoke
L370



Merlot
L371



Twilight
LD54

Elmotique



Flaxen
L311



Earth
L312



Clay
L313



Blue Mountain
L314



Juniper
L315

Leather/Faux

Faux Leather Palette

Note: Coalesse reserves the right to reject fabrics when necessary if the quality or construction is not satisfactory for intended use. For most up to date information on fabric usage please check the fabric database on www.coalesse.com.

► See *Leather and Faux Leather Matrix* for availability by product list, page 21.

Group 5

Destiny

| | | | | | | | |
|---|---|---|---|---|--|---|---|
|  |  |  |  |  |  |  |  |
| Ash DY18 | Black DY01 | Black Rose DY06 | Blueberry DY03 | Butter DY21 | Cactus Green DY32 | Cedar DY05 | Chestnut DY04 |
|  |  |  |  |  |  |  |  |
| Cypress DY33 | Deep Red DY23 | Dune DY09 | Eggshell DY24 | Evergreen DY13 | Football DY35 | Juniper DY15 | Mink DY34 |
|  |  |  |  |  |  |  |  |
| Mocha DY17 | Newport DY12 | Oak DY11 | Olive DY16 | Parchment DY26 | Patine DY08 | Periwinkle DY27 | Raisin DY02 |
|  |  |  |  |  |  | | |
| Root DY36 | Royal Purple DY30 | Saddle DY31 | Storm DY14 | Truffle DY10 | Wine DY07 | | |

Faux Leather Palette

Note: Coalesse reserves the right to reject fabrics when necessary if the quality or construction is not satisfactory for intended use. For most up to date information on fabric usage please check the fabric database on www.coalesse.com.

► See *Leather and Faux Leather Matrix* for availability by product list, page 21.

Finesse



Ovation

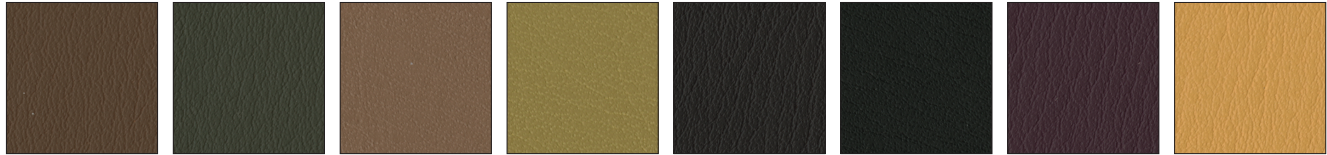


Faux Leather Palette continued

Note: Coalesse reserves the right to reject fabrics when necessary if the quality or construction is not satisfactory for intended use. For most up to date information on fabric usage please check the fabric database on www.coalesse.com.

► See *Leather and Faux Leather Matrix* for availability by product list, page 21.

Panache

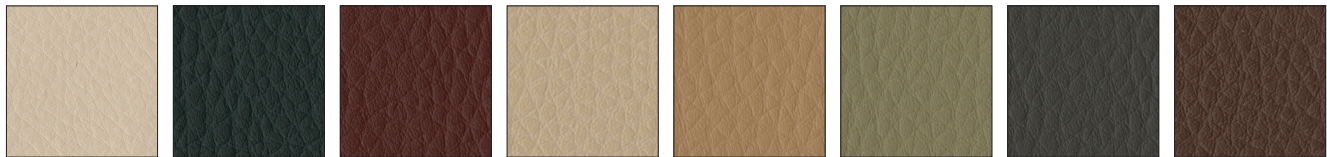


Acorn P808 Cactus P801 Cashew P807 Chartreuse P812 Coffee P805 Ebony P800 Exotic Orchid P810 Maize P811



Redwood P809 Regal Blue P813 Sherwood P802 Sweet Sage P804 Teal Blue P803 True Taupe P806

Prestige



Antique White AFDG Boxwood Green AFP2 Brick AF12 Buff AFD3 Buttercreme AFH2 Celadon AFPC French Grey AFL8 Havana AF11



Onyx AFA1 Pecan AFH1 Sandstone AFE1 Saxe Blue AFC3 Soft White AFB2 Tree Moss AFPA Wild Plum AFS3 Willow AFP1

Faux Leather Palette

Note: Coalesse reserves the right to reject fabrics when necessary if the quality or construction is not satisfactory for intended use. For most up to date information on fabric usage please check the fabric database on www.coalesse.com.

► See *Leather and Faux Leather Matrix* for availability by product list, page 21.

Group 6

Brisa



Elegance



Wood

Wood

Standard Wood Finishes

Coalesse's primary wood finish, Clarity, is a water-borne UV topcoat, which protects the environment while providing exceptional durability and resistance to water and chemical stains. Contoured products, such as wood guest chairs and occasional tables, are finished with post-catalyzed vinyl, which provides similar properties and matches the sheen and color of Clarity. Due to natural variations in wood, finished products may vary from samples in color, texture, and grain.

Wood will develop a deep, rich patina over time as the wood ages. Mineral streaks, gum pockets, and pin knots are some of the unique characteristics that are visible in veneers and solids.

All wood products will darken with age and exposure to ultraviolet light. This is especially apparent with cherry and maple veneer.

When storing your wood furniture, please follow the following guidelines:

- Do not store products in trailers
- Store products in areas that simulate office temperatures (60°F to 90°F)
- Store products in areas that maintain constant, office-like humidity levels
- Keep product away from light. Cover products to make sure they are not exposed to light.

Samples contact Customer Service at 1.800.627.6770

Steelcase Wood Finishes

Coalesse will match current Steelcase wood finishes at no upcharge. Finish matches are for color only and do not match the Steelcase finish in sheen.

Natural veneers celebrate the natural beauty of wood with neutral tones.

Plank veneers were intentionally designed to enhance the unique characteristics of wood with natural variations that include grain pattern, color, and texture that are meant to be celebrated.

Steelcase Select Surfaces

In addition to the standard Steelcase veneer palette, Coalesse offers Steelcase Select Surfaces.

Composite veneers are engineered veneer intended to create consistent grain patterns and characteristics with minimal inconsistency within an order. Please note that because these finishes are part of Steelcase Select Surfaces, they may have additional lead times.

Painted MDF

The painted medium density fiberboard (MDF) is utilizing molding grade MDF, therefore, the 45 lb density is consistent throughout the entire thickness of the board. This allows for a smooth edge when painted. Three coats of water reducible finish is applied to the board in a milk or black. The painted MDF has durability and care properties like a wood veneer, thus, must be treated as such.

Wood Veneer Specifications

Cherry

- American Black Cherry
- Flat-cut, plain sliced/book matched
- Quarter-cut/book matched
- Narrow cathedrals, mild grain, minimal pitch
- 5-10" wide leaves of 1/42" thick veneer, balanced on panel
- No gaps between leaves
- PB (particle board) core
- Low sheen 15 or high sheen 35

Maple

- Eastern Hard White Maple
- Flat-cut, plain sliced/slip matched
- Quarter-cut/book matched
- Narrow cathedrals, mild grain, minimal pitch
- 5-10" wide leaves of 1/42" thick veneer, balanced on panel
- No gaps between leaves
- PB (particle board) core
- Low sheen 15 or high sheen 35

Oak

- White Oak
- Rift-cut
- Slip match
- Mild grain
- 4-8" wide leaves of 1/42" thick veneer, balanced on panel
- No gaps between leaves
- PB (particle board) core
- Low sheen 15 or high sheen 35

Walnut

- American Black Walnut
- Flat-cut, plain sliced/book matched
- Quarter-cut/book matched
- Narrow cathedrals, mild grain
- 5-10" wide leaves of 1/42" thick veneer, balanced on panel
- No gaps between leaves
- PB (particle board) core
- Low sheen 15 or high sheen 35

Exclusive (by product)

Teak

- Quarter-cut/book match
- 15 sheen

Ash (Grey)

- Quarter-cut/book match
- 15 sheen

Flat-Cut – High Sheen

Group 1

- V10C FC/HS Natural Cherry
- V11C FC/HS Clear Cherry
- V12C FC/HS Medium Amber Cherry
- V13C FC/HS Dark Cherry
- V10M FC/HS Clear Maple
- V11M FC/HS Natural Beech on Maple
- V12M FC/HS Medium Maple
- V10W FC/HS Natural Walnut
- V11W FC/HS Clear Walnut
- V12W FC/HS Medium Walnut
- V13W FC/HS Black Walnut
- V14W FC/HS Dark Walnut

Flat-Cut – Low Sheen

Group 1

- V1AC FC/LS Natural Cherry
- V1BC FC/LS Clear Cherry
- V1CC FC/LS Medium Amber Cherry
- V1DC FC/LS Dark Cherry
- V1AM FC/LS Clear Maple
- V1BM FC/LS Natural Beech on Maple
- V1CM FC/LS Medium Maple
- V1AW FC/LS Natural Walnut
- V1BW FC/LS Clear Walnut
- V1CW FC/LS Medium Walnut
- V1EW FC/LS Dark Walnut

Rift-Cut – High Sheen

Group 1

- V30K RC/HS Natural Oak
- V31K RC/HS Desert Oak
- V32K RC/HS Medium Brown Oak
- V33K RC/HS Medium Gray Oak
- V34K RC/HS Black Brown Oak

Rift-Cut – Low Sheen

Group 1

- V3AK RC/LS Natural Oak
- V3BK RC/LS Desert Oak
- V3CK RC/LS Medium Brown Oak
- V3DK RC/LS Medium Gray Oak
- V3EK RC/LS Black Brown Oak

FC=Flat-Cut

RC=Rift-Cut

QC=Quarter-Cut

HS=High Sheen

LS=Low Sheen

Wood

Applies to: Enea Alto943, Montara650 Tables and Seating, and Sistema Lounge System

Group 1

- VP01 Light Oak
- VP03 Black Oak
- VP05 White Oak

Group 2

- VP02 Smoked Oak
- VP04 Grey Oak

Quarter-Cut – High Sheen

Group 2

- V20C QC/HS Natural Cherry
- V21C QC/HS Clear Cherry
- V22C QC/HS Medium Amber Cherry
- V23C QC/HS Dark Cherry
- V20M QC/HS Clear Maple
- V21M QC/HS Natural Beech on Maple
- V22M QC/HS Medium Maple
- V20W QC/HS Natural Walnut
- V21W QC/HS Clear Walnut
- V22W QC/HS Medium Walnut
- V23W QC/HS Black Walnut
- V24W QC/HS Dark Walnut

Quarter-Cut – Low Sheen

Group 2

- V2AA QC/LS Ash Natural FSC
- V2AC QC/LS Natural Cherry
- V2BC QC/LS Clear Cherry
- V2CC QC/LS Medium Amber Cherry
- V2DC QC/LS Dark Cherry
- V2AM QC/LS Clear Maple
- V2BM QC/LS Natural Beech on Maple
- V2CM QC/LS Medium Maple
- V2AW QC/LS Natural Walnut
- V2BW QC/LS Clear Walnut
- V2CW QC/LS Medium Walnut
- V2EW QC/LS Dark Walnut
- V2AT QC/LS Teak Natural Raw FSC

- FC = Flat-Cut
- RC = Rift-Cut
- QC = Quarter-Cut
- HS = High Sheen
- LS = Low Sheen
- OP = Open Pore
- Ⓔ = Excluded

Steelcase Veneers, Open Pore Only

Group 1

Cherry, Flat-Cut

- 3402 FC/OP Clear Cherry
- 3412 FC/OP Natural Cherry Ⓔ
- 3422 FC/OP Medium Cherry

Maple, Flat-Cut

- 3522 FC/OP Clear Maple
- 3592 FC/OP Blonde on Maple Ⓔ X10/26

Maple, Quarter-Cut

- 3222 QC/OP Clear Maple
- 3292 QC/OP Blonde on Maple Ⓔ X10/26

Walnut, Flat-Cut

- 3062 FC/OP Graphite Walnut
- 3342 FC/OP Black Walnut
- 3702 FC/OP Clear Walnut
- 3712 FC/OP Natural Walnut
- 3752 FC/OP Medium Walnut Ⓔ
- 3762 FC/OP Dark Walnut
- 3772 FC/OP Medium Mahogany on Walnut

Walnut, Quarter-Cut

- 3302 QC/OP Clear Walnut
- 3312 QC/OP Natural Walnut
- 3352 QC/OP Medium Walnut Ⓔ
- 3362 QC/OP Dark Walnut
- 3372 QC/OP Medium Mahogany on Walnut
- 3382 QC/OP Graphite Walnut
- 3392 QC/OP Black Walnut

Oak, Rift-Cut

- 3602 RC/OP Desert Oak

Premium Wood, Quarter-Cut

- 3832 QC/OP Figured Anegre

Planked Veneer

- 3P41 OP Planked Cherry
- 3P51 OP Planked Maple
- 3P61 OP Planked Oak
- 3P71 OP Planked Walnut
- 3VFX OP Unmarked Oak

Natural Veneer, Flat-Cut

- 35A2 FC/OP Blanch Maple
- 37A2 FC/OP Thunder Walnut

Natural Veneer, Rift Cut

- 36A2 RC/OP Volcanic Oak

Group 2

Ash, Quarter-Cut

- 3042 QC/OP Ash Ⓔ

Natural Veneer, Flat-Cut

- 3082 FC/OP Washed Walnut

Natural Veneer, Quarter Cut

- 32A2 QC/OP Blanch Maple
- 33A2 QC/OP Thunder Walnut

Steelcase Select Surfaces Veneers, Open Pore Only

Group 1

Composite Veneer, Flat-Cut

- 3JDX FC/OP Oak Composite X10/26
- 3JXX FC/OP Walnut Composite
- 3LAX FC/OP Graphite on Oak Composite
- 3LCX FC/OP Medium Cherry on Cherry Composite

Group 2

Composite Veneer, Flat-Cut

- 3LHX FC/OP Espresso on Walnut Composite

Composite Veneer, Quarter-Cut

- 3F8X QC/OP European Walnut Composite
- 3GGX QC/OP Zebrano Composite X10/26
- 3HGX QC/OP Oak Composite
- 3HVX QC/OP Walnut Composite
- 3LBX QC/OP Clear Walnut on Walnut Composite
- 3LDX QC/OP Natural Walnut on Walnut Composite
- 3LEX QC/OP Desert Oak on Oak Composite
- 3LGX QC/OP Chai on Walnut Composite
- 3LJX QC/OP Ebony on Walnut Composite
- 3ZNX QC/OP Dark Cerused Oak Composite X10/26

Painted MDF

Applies to: Exponents Whiteboard and Mobile Display

- V145 Milk
- V197 Black

Solid Wood Stains

- Black Ash (RAL 9005)
- Black Oak (RAL 9005)
- Brown Ash (RAL 8016)
- Green Ash (RAL 6007)
- Grey Ash (RAL 4000)
- Natural Ash
- Natural Oak
- Natural Pine
- Neon Blue Ash (RAL 5013)
- Yellow Ash (RAL 1018)
- Red Ash (RAL 2002)
- Thermo Oiled Ash
- White Ash (RAL 9003)

X10/26 = Last order entry
October 18, 2026

Solid Wood Matrix

For Solid Hardwood Components of Seating and Tables

Legend

- = Not available
- = Available
- (with M) = Stain color only on maple
- (with B) = Stain color on Beech
- ▶ See specification pages in the Coalesse Specification Guides for details.

| | Maple Flat-Cut – High Sheen | Maple Flat-Cut – Low Sheen | Maple Quarter-Cut – High Sheen | Maple Quarter-Cut – Low Sheen | Cherry Flat-Cut – High Sheen | Cherry Flat-Cut – Low Sheen | Cherry Quarter-Cut – High Sheen | Cherry Quarter-Cut – Low Sheen | Oak Rift-Cut – High Sheen | Oak Rift-Cut – Low Sheen | Walnut Flat-Cut – High Sheen | Walnut Flat-Cut – Low Sheen | Walnut Quarter-Cut – High Sheen | Walnut Quarter-Cut – Low Sheen | Teak Quarter-Cut – High Sheen | Teak Quarter-Cut – Low Sheen | Grey Ash – High Sheen | Grey Ash – Low Sheen | Black Ash (RAL 9005) | Black Oak (RAL 9005) | Brown Ash (RAL 8016) | Green Ash (RAL 6007) | Grey Ash (7031) | Grey Ash (RAL 4000) | Natural Ash | Natural Oak |
|--|-----------------------------|----------------------------|--------------------------------|-------------------------------|------------------------------|-----------------------------|---------------------------------|--------------------------------|---------------------------|--------------------------|------------------------------|-----------------------------|---------------------------------|--------------------------------|-------------------------------|------------------------------|-----------------------|----------------------|----------------------|----------------------|----------------------|----------------------|-----------------|---------------------|-------------|-------------|
|--|-----------------------------|----------------------------|--------------------------------|-------------------------------|------------------------------|-----------------------------|---------------------------------|--------------------------------|---------------------------|--------------------------|------------------------------|-----------------------------|---------------------------------|--------------------------------|-------------------------------|------------------------------|-----------------------|----------------------|----------------------|----------------------|----------------------|----------------------|-----------------|---------------------|-------------|-------------|

Seating

| | | | | | | | | | | | | | | | | | | | | | | | | | | |
|-------------------------|---|---|---|---|---|---|---|---|---|---|---|---|---|---|---|---|---|---|---|---|---|---|---|---|---|---|
| Branca Chair | • | • | • | • | • | • | • | • | • | • | • | • | • | • | • | • | • | • | • | • | • | • | • | • | • | • |
| Branca Counter Stool | • | • | • | • | • | • | • | • | • | • | • | • | • | • | • | • | • | • | • | • | • | • | • | • | • | • |
| Branca Bar Stool | • | • | • | • | • | • | • | • | • | • | • | • | • | • | • | • | • | • | • | • | • | • | • | • | • | • |
| Circa Cylinder Legs | • | • | • | • | • | • | • | • | ■ | ■ | • | • | • | • | • | • | • | • | • | • | • | • | • | • | • | • |
| Circa Tapered Legs | • | • | ■ | ■ | • | • | • | • | • | • | • | • | ■ | ■ | • | • | • | • | • | • | • | • | • | • | • | • |
| Coalesse Ensemble Feet | • | • | • | • | • | • | • | • | ■ | ■ | • | • | • | • | • | • | • | • | • | • | • | • | • | • | • | • |
| Coupe Lounge | ■ | ■ | • | • | ■ | ■ | • | • | ■ | ■ | ■ | ■ | • | • | • | • | • | • | • | • | • | • | • | • | • | • |
| Cugino | • | • | • | • | • | • | • | • | • | • | • | • | • | • | • | • | • | • | • | ■ | • | • | • | • | • | ■ |
| Cugino Soft | • | • | • | • | • | • | • | • | • | • | • | • | • | • | • | • | • | • | • | • | • | • | • | • | • | • |
| Enea Altzo943 | • | • | • | • | • | • | • | • | • | • | ■ | • | • | • | • | • | • | • | • | • | • | • | • | • | • | • |
| Enea Café Wood Stool* | • | • | • | • | • | • | • | • | • | • | ■ | • | • | • | • | • | • | • | • | • | • | • | • | • | • | • |
| Kathryn | ■ | ■ | • | • | ■ | ■ | • | • | ■ | ■ | ■ | ■ | • | • | • | • | • | • | • | • | • | • | • | • | • | • |
| Leva | • | • | • | • | • | • | • | • | • | • | • | • | • | • | • | • | • | • | • | ■ | • | • | • | ■ | ■ | • |
| Marien152 | • | • | • | • | • | • | • | • | ■ | ■ | • | • | • | • | • | • | • | • | • | • | • | • | • | • | • | • |
| Medici Lounge | • | • | • | • | • | • | • | • | • | • | • | • | • | • | • | • | • | • | ■ | • | • | • | ■ | ■ | • | • |
| Medici Stool | • | • | • | • | • | • | • | • | • | • | • | • | • | • | • | • | • | • | ■ | • | • | ■ | ■ | • | • | • |
| Passerelle | ■ | ■ | • | • | ■ | ■ | • | • | ■ | ■ | ■ | ■ | • | • | • | • | • | • | • | • | • | • | • | • | • | • |
| Seta Chair | • | • | • | • | • | • | • | • | • | • | • | • | • | • | • | • | • | • | ■ | • | • | • | ■ | ■ | • | • |
| She Said Chair | • | • | • | • | • | • | • | • | • | • | • | • | • | • | • | • | • | • | ■ | • | • | • | ■ | ■ | • | • |
| Sistema Lounge System** | • | • | • | • | • | • | • | • | • | • | ■ | • | • | • | • | • | • | • | • | • | • | • | • | • | • | • |
| Thoughtful | ■ | ■ | • | • | • | • | • | • | • | ■ | ■ | • | • | • | • | • | • | • | • | • | • | • | • | • | • | • |

Occasional Tables

| | | | | | | | | | | | | | | | | | | | | | | | | | | |
|---------------------|---|---|---|---|---|---|---|---|---|---|---|---|---|---|---|---|---|---|---|---|---|---|---|---|---|---|
| CG_1 | • | • | • | • | • | • | • | • | ■ | ■ | ■ | • | • | • | • | • | • | • | • | • | • | • | • | • | • | • |
| Circa Cylinder Legs | • | • | • | • | • | • | • | • | ■ | ■ | • | • | • | • | • | • | • | • | • | • | • | • | • | • | • | • |
| Circa Tapered Legs | • | • | ■ | ■ | • | • | • | • | ■ | ■ | • | ■ | ■ | • | • | • | • | • | • | • | • | • | • | • | • | • |
| Passerelle | ■ | ■ | • | • | ■ | ■ | • | • | ■ | ■ | ■ | ■ | • | • | • | • | • | • | • | • | • | • | • | • | • | • |

Collaboration and Conference Tables

| | | | | | | | | | | | | | | | | | | | | | | | | | | |
|------------------|---|---|---|---|---|---|---|---|---|---|---|---|---|---|---|---|---|---|---|---|---|---|---|---|---|---|
| Potrero415 Light | • | • | • | • | • | • | • | • | ■ | ■ | • | • | • | • | • | • | • | • | • | • | • | • | • | • | • | • |
| Potrero415 | • | • | • | • | • | • | • | • | ■ | ■ | • | • | • | • | • | • | • | • | • | • | • | • | • | • | • | • |

* V3AK Natural Oak only.

** Select colors only: VP01, VP02, VP03, VP04, and VP05

▶ Matrix, continued on next page

Solid Wood Stains Palette

For Solid Hardwood Components of Seating and Tables

► See *Solid Wood Matrix* for availability by product list, page 30.

High Sheen



Clear Maple
V10M

Natural Beech
on Maple
V11M

Medium Maple
V12M

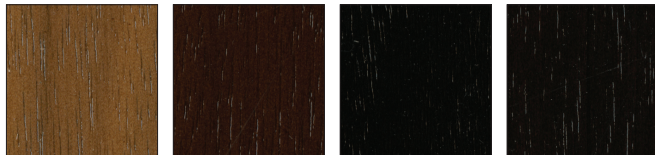
Natural Cherry
V10C

Clear Cherry
V11C

Medium Amber
Cherry
V12C

Dark Cherry
V13C

Natural Walnut
V10W



Clear Walnut
V11W

Medium Walnut
V12W

Black Walnut
V13W

Dark Walnut
V14W

Finish may be applied to different species.
See Solid Wood Matrix for details.

Low Sheen



Clear Maple
V1AM

Natural Beech
on Maple
V1BM

Medium Maple
V1CM

Natural Cherry
V1AC

Clear Cherry
V1BC

Medium Amber
Cherry
V1CC

Dark Cherry
V1DC

Natural Walnut
V1AW



Clear Walnut
V1BW

Medium Walnut
V1CW

Dark Walnut
V1EW

Finish may be applied to different species.
See Solid Wood Matrix for details.

High Sheen



Natural Oak
V30K

Desert Oak
V31K

Medium Brown Oak
V32K

Medium Gray Oak
V33K

Black Brown Oak
V34K

Finish may be applied to different species.
See Solid Wood Matrix for details.

Solid Wood Stains Palette

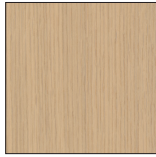
For Solid Hardwood Components of Seating and Tables

► See *Solid Wood Matrix* for availability by product list, page 30.

Low Sheen



Natural Oak
V3AK



Desert Oak
V3BK



Medium Brown Oak
V3CK



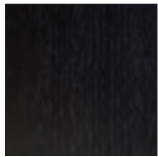
Medium Gray Oak
V3DK



Black Brown Oak
V3EK

Finish may be applied to different species.
See Solid Wood Matrix for details.

Solid Wood Stains



Black Ash
(RAL 9005)



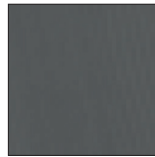
Black Oak
(RAL 9005)



Brown Ash
(RAL 8016)



Green Ash
(RAL 6007)



Grey Ash
(RAL 4000)



Natural Ash



Natural Oak



Natural Pine



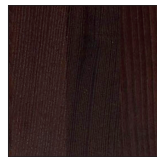
Neon Blue Ash
(RAL 5013)



Yellow Ash
(RAL 1018)



Red Ash
(RAL 2002)



Thermo Oiled Ash



White Ash
(RAL 9003)

Veneer Matrix

For Conference and Café Tables, Storage, Casegoods, and Occasional Tables, and Seating

Legend

- = Not available
- = Available
- = Stain color only on maple
- = Stain color only
- ▶ See specification pages for details.

| | Maple Flat-Cut – High Sheen | Maple Flat-Cut – Low Sheen | Maple Quarter-Cut – High Sheen | Maple Quarter-Cut – Low Sheen | Cherry Flat-Cut – High Sheen | Cherry Flat-Cut – Low Sheen | Cherry Quarter-Cut – High Sheen | Cherry Quarter-Cut – Low Sheen | Oak Rift-Cut – High Sheen | Oak Rift-Cut – Low Sheen | Walnut Flat-Cut – High Sheen | Walnut Flat-Cut – Low Sheen | Walnut Quarter-Cut – High Sheen | Walnut Quarter-Cut – Low Sheen | Teak Quarter-Cut – Low Sheen | Grey Ash – Low Sheen | Transolid – Solid Surface | Exclusive Finishes for Trees | Milk MDF | Black MDF | Composite Flat-Cut—Select Surfaces | Composite Quarter-Cut—Select Surfaces | Planked Veneers | Natural Veneers | Ash – Quarter-Cut | Premium Wood—Quarter-Cut |
|--|-----------------------------|----------------------------|--------------------------------|-------------------------------|------------------------------|-----------------------------|---------------------------------|--------------------------------|---------------------------|--------------------------|------------------------------|-----------------------------|---------------------------------|--------------------------------|------------------------------|----------------------|---------------------------|------------------------------|----------|-----------|------------------------------------|---------------------------------------|-----------------|-----------------|-------------------|--------------------------|
| Tables and Casegoods | | | | | | | | | | | | | | | | | | | | | | | | | | |
| Bob | ■ | ■ | ■ | ■ | ■ | ■ | ■ | ■ | ■ | ■ | ■ | ■ | ■ | ■ | • | • | ■ | • | • | • | ■ | ■ | ■ | ■ | ■ | ■ |
| CG_1 | ■ | ■ | ■ | ■ | ■ | ■ | ■ | ■ | ■ | ■ | ■ | ■ | ■ | ■ | • | • | ■ | • | • | • | ■ | ■ | ■ | ■ | ■ | ■ |
| Circa | • | • | ■ | ■ | • | • | • | • | ■ | ■ | • | • | ■ | ■ | • | • | • | • | • | • | • | • | • | • | • | • |
| Coalesse Ensemble In-line Tables and Planter | ■ | ■ | ■ | ■ | ■ | ■ | ■ | ■ | ■ | ■ | ■ | ■ | ■ | ■ | • | • | • | • | • | • | • | • | • | ■ | ■ | ■ |
| Diekman | ■ | ■ | • | • | ■ | ■ | • | • | ■ | ■ | ■ | ■ | ■ | ■ | • | • | • | • | • | • | • | • | • | • | • | • |
| E-Tables 2 Bases | ■ | ■ | ■ | ■ | ■ | ■ | ■ | ■ | ■ | ■ | ■ | ■ | ■ | ■ | • | • | • | • | • | • | • | ■ | ■ | ■ | ■ | ■ |
| E-Tables 2 Tops | ■ | ■ | ■ | ■ | ■ | ■ | ■ | ■ | ■ | ■ | ■ | ■ | ■ | ■ | • | • | • | • | • | • | • | ■ | ■ | ■ | ■ | ■ |
| Enea Lottus | ■ | ■ | ■ | ■ | ■ | ■ | ■ | ■ | ■ | ■ | ■ | ■ | ■ | ■ | • | • | • | • | • | • | • | • | ■ | ■ | ■ | ■ |
| Exponents Whiteboard and Mobile Display | ■ | ■ | ■ | ■ | ■ | ■ | ■ | ■ | ■ | ■ | ■ | ■ | ■ | ■ | • | • | ■ | • | ■ | ■ | ■ | ■ | ■ | ■ | ■ | ■ |
| Host Bases | ■ | ■ | ■ | ■ | ■ | ■ | ■ | ■ | ■ | ■ | ■ | ■ | ■ | ■ | • | • | • | • | • | • | • | • | • | ■ | ■ | ■ |
| Host Tops | ■ | ■ | ■ | ■ | ■ | ■ | ■ | ■ | ■ | ■ | ■ | ■ | ■ | ■ | • | • | • | • | • | • | • | • | ■ | ■ | ■ | ■ |
| Lagunitas Focus Nook | ■ | ■ | ■ | ■ | ■ | ■ | ■ | ■ | ■ | ■ | ■ | ■ | ■ | ■ | • | • | • | • | • | • | • | ■ | ■ | ■ | ■ | ■ |
| Lagunitas Tables | ■ | ■ | ■ | ■ | ■ | ■ | ■ | ■ | ■ | ■ | ■ | ■ | ■ | ■ | • | • | • | • | • | • | • | ■ | ■ | ■ | ■ | ■ |
| Montara650 | ■ | ■ | ■ | ■ | ■ | ■ | ■ | ■ | ■ | ■ | ■ | ■ | ■ | ■ | • | • | • | • | • | • | • | ■ | ■ | ■ | ■ | ■ |
| Potrero415 | ■ | ■ | ■ | ■ | ■ | ■ | ■ | ■ | ■ | ■ | ■ | ■ | ■ | ■ | • | • | ■ | • | • | • | • | ■ | ■ | ■ | ■ | ■ |
| Potrero415 Light | ■ | ■ | ■ | ■ | ■ | ■ | ■ | ■ | ■ | ■ | ■ | ■ | ■ | ■ | • | • | ■ | • | • | • | • | ■ | ■ | ■ | ■ | ■ |
| Sebastopol | ■ | ■ | ■ | ■ | ■ | ■ | ■ | ■ | ■ | ■ | ■ | ■ | ■ | ■ | • | • | • | • | • | • | • | ■ | ■ | ■ | ■ | ■ |
| Sistema** | • | • | • | • | • | • | • | • | • | ■ | • | • | • | • | • | • | • | • | • | • | • | • | • | • | • | • |
| Storage, Bench, and Lectern | ■ | ■ | ■ | ■ | ■ | ■ | ■ | ■ | ■ | ■ | ■ | ■ | ■ | ■ | • | • | ■ | • | • | • | • | ■ | ■ | ■ | ■ | ■ |
| SW_1 | ■ | ■ | ■ | ■ | ■ | ■ | ■ | ■ | ■ | ■ | ■ | ■ | ■ | ■ | • | • | ■ | • | • | • | • | ■ | ■ | ■ | ■ | ■ |
| Trees | • | • | • | • | • | • | • | • | • | • | • | • | • | • | • | • | • | ■ | • | • | • | • | • | • | • | • |
| Seating | | | | | | | | | | | | | | | | | | | | | | | | | | |
| Enea | ■ | ■ | • | • | ■ | ■ | • | • | ■ | ■ | ■ | ■ | • | • | • | • | • | • | • | • | • | • | • | • | • | • |
| Enea Café Wood Stool* | • | • | • | • | • | • | • | • | • | ■ | • | • | • | • | • | • | • | • | • | • | • | • | • | • | • | • |
| Montara650** | • | • | • | • | • | • | • | • | • | ■ | • | • | • | • | • | • | • | • | • | • | • | • | • | • | • | • |
| Sistema Lounge System ** | • | • | • | • | • | • | • | • | • | ■ | • | • | • | • | • | • | • | • | • | • | • | • | • | • | • | • |

* V3AK Natural Oak only
 ** Select colors only: VP01, VP02, VP03, VP04, and VP05

Coalesse

Veneer Matrix

For Conference and Café Tables, Storage, Casegoods, and Occasional Tables, and Seating

Wood

Veneer Palette

For Conference and Multipurpose Tables, Storage, Casegoods, Occasional Tables, and Seating

► See *Veneer Matrix* for availability by product list, page 34.

Flat-Cut – High Sheen



Clear Maple
V10M

Natural Beech
on Maple
V11M

Medium Maple
V12M

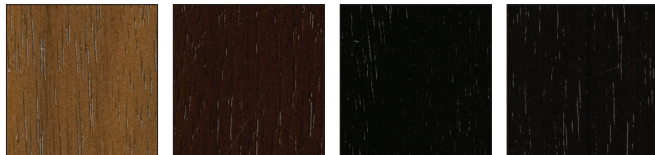
Natural Cherry
V10C

Clear Cherry
V11C

Medium Amber
Cherry
V12C

Dark Cherry
V13C

Natural Walnut
V10W



Clear Walnut
V11W

Medium Walnut
V12W

Black Walnut
V13W

Dark Walnut
V14W

Flat-Cut – Low Sheen



Clear Maple
V1AM

Natural Beech
on Maple
V1BM

Medium Maple
V1CM

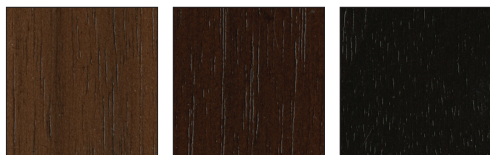
Natural Cherry
V10C

Clear Cherry
V1BC

Medium Amber
Cherry
V1CC

Dark Cherry
V1DC

Natural Walnut
V1AW



Clear Walnut
V1BW

Medium Walnut
V1CW

Dark Walnut
V1EW

Rift-Cut – High Sheen



Natural Oak
V30K

Desert Oak
V31K

Medium Brown Oak
V32K

Medium Gray Oak
V33K

Black Brown Oak
V34K

Rift-Cut – Low Sheen



Natural Oak
V3AK

Desert Oak
V3BK

Medium Brown Oak
V3CK

Medium Gray Oak
V3DK

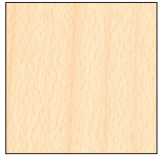
Black Brown Oak
V3EK

Veneer Palette

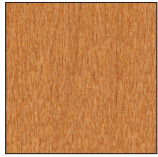
For Conference and Multipurpose Tables, Storage, Casegoods, Occasional Tables, and Seating

► See *Veneer Matrix* for availability by product list, page 34.

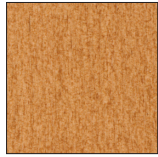
Quarter-Cut – High Sheen



Clear Maple
V20M



Natural Beech
on Maple
V21M



Medium Maple
V22M



Natural Cherry
V20C



Clear Cherry
V21C



Medium Amber
Cherry
V22C



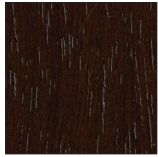
Dark Cherry
V23C



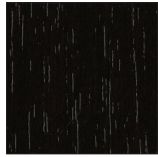
Natural Walnut
V20W



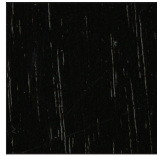
Clear Walnut
V21W



Medium Walnut
V22W

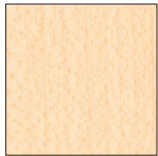


Dark Walnut
V24W



Black Walnut
V23W

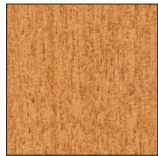
Quarter-Cut – Low Sheen



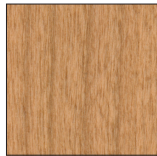
Clear Maple
V2AM



Natural Beech
on Maple
V2BM



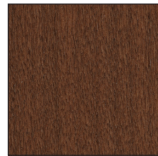
Medium Maple
V2CM



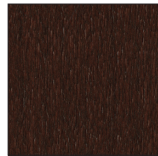
Natural Cherry
V2AC



Clear Cherry
V2BC



Medium Amber
Cherry
V2CC



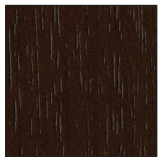
Dark Cherry
V2DC



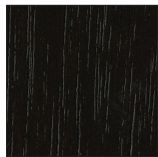
Natural Walnut
V2AW



Clear Walnut
V2BW



Medium Walnut
V2CW



Dark Walnut
V2EW

Veneer Palette continued

For Conference and Multipurpose Tables, Storage, Casegoods, Occasional Tables, and Seating

▶ See *Veneer Matrix* for availability by product list, page 34.

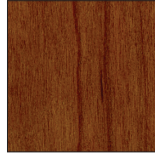
Steelcase Veneers (open pore only)

Ash – Quarter-Cut

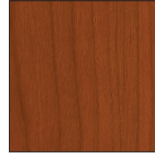


Ash **E**
3042

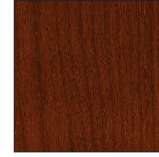
Cherry – Flat-Cut



Clear Cherry
3402



Natural Cherry **E**
3412



Medium Cherry
3422

Maple – Flat-Cut



Clear Maple
3522

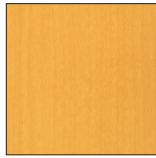


Blonde on Maple **E**
3592 **X10/26**

Maple – Quarter-Cut



Clear Maple
3222

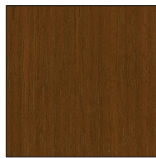


Blonde on Maple **E**
3292 **X10/26**

Walnut – Flat-Cut



Graphite Walnut
3062



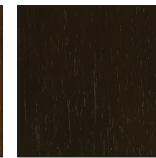
Clear Walnut
3702



Natural Walnut
3712



Medium Walnut **E**
3752



Dark Walnut
3762



Medium Mahogany
on Walnut
3772

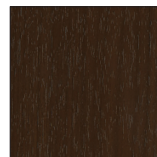
Walnut – Quarter-Cut



Clear Walnut
3302



Natural Walnut
3312



Medium Walnut **E**
3352



Dark Walnut
3362



Medium Mahogany
on Walnut
3372



Graphite Walnut
3382

E = Excluded

X10/26 = Last order entry
October 18, 2026

Veneer Palette

For Conference and Multipurpose Tables, Storage, Casegoods, Occasional Tables, and Seating

► See *Veneer Matrix* for availability by product list, page 34.

Steelcase Veneers (open pore only)

Premium Wood – Quarter-Cut



Figured Anegre
3832

Oak – Rift-Cut



Desert Oak
3602



Medium Cherry
3422

Planked Veneer



Planked Cherry
3P41



Planked Maple
3P51



Planked Oak
3P61



Planked Walnut
3P71

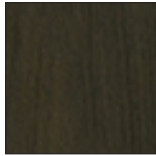


Unmarked Oak
3VFX

Natural Veneer



Quarter-Cut Blanch
Maple
32A2



Quarter-Cut
Thunder Walnut
33A2



Flat-Cut Blanch
Maple
35A2



Rift-Cut Volcanic
Oak
36A2

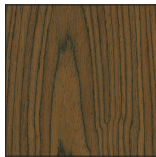


Flat-Cut Thunder
Walnut
37A2

Composite, Flat-Cut—Select Surfaces



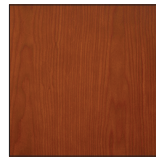
Oak
3JDX **X10/26**



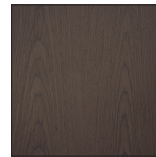
Walnut
3JJX



Graphite
3LAX



Medium Cherry
3LCX



Espresso
3LHX

Veneer Palette *continued*

For Conference and Multipurpose Tables, Storage, Casegoods, Occasional Tables, and Seating

▶ See *Veneer Matrix* for availability by product list, page 34.

Composite, Quarter-Cut—Select Surfaces



European Walnut
3F8X

Zebrano
3GGX **X10/26**

Oak
3HGX

Walnut
3HVX

Clear Walnut
3LBX

Natural Walnut
3LDX

Desert Oak
3LEX

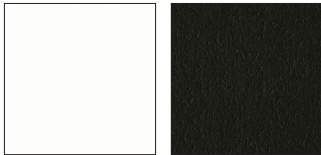
Chai
3LGX



Ebony
3LJX

Night Cerused Oak
3ZNX **X10/26**

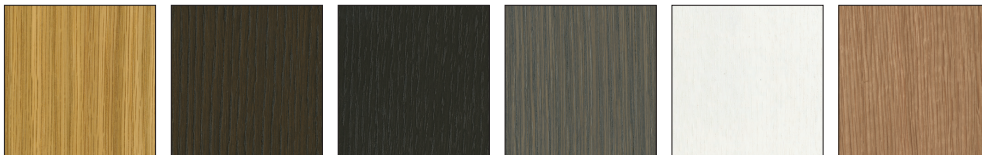
Exponents Whiteboard and Mobile Display Painted MDF



Milk
V145

Black
V197

Enea Altzo943, Montara650 Tables and Seating, and Sistema Lounge System



Light Oak
VP01

Smoked Oak
VP02

Black Oak*
VP03

Grey Oak
VP04

White Oak
VP05

Rift-Cut Oak**
V3AK

* VP03 Black Oak is equivalent in color to Steelcase finish 36A2 Volcanic Ash.

** V3AK Rift-Cut Oak is only available on Enea Altzo943.

Trees Embossed Wood



Medium Brown
EWMB

Natural
EWNT

X10/26 = Last order entry
October 18, 2026

Laminate

Laminate

Coalesse's grouped laminate program includes our standard laminates, Steelcase High-Pressure Laminates, and standard High-Pressure Laminates from Nevamar, Wilsonart, Formica, and Pionite.

Standard Coalesse Laminate

Group 1

Coalesse High-Pressure Laminates are priced as Group 1.

High-Pressure Laminates listed below are not available on all products, check laminate matrix for availability.

| | |
|------|-----------------|
| 2730 | Arctic White |
| 2746 | Black |
| 2826 | White Nebula |
| 2829 | Poppyseed |
| 2830 | Charcoal |
| 2884 | Milk |
| 2886 | Maple |
| 2887 | Amber Cherry |
| 2890 | Folkstone BMV |
| 2891 | Ingot |
| 2892 | Ash |
| 2895 | Natural Walnut |
| 2896 | Dark Cork |
| 2897 | Desert Oak |
| 2898 | Satin Stainless |

Standard Steelcase Laminate

Group 1

All Steelcase High-Pressure Laminates may be specified on Coalesse products with exception (must be ordered as Special): Await tables and Enea Lottus tables. The use of Steelcase High-Pressure Laminate may be subject to extended lead times.

Fiber Laminate

| | |
|------|-------------------------|
| 2850 | Vanadium Fiber |
| 2852 | Tungsten Fiber E |
| 2854 | Vellum Fiber E |
| 2860 | Granite Fiber |
| 2862 | Stucco Fiber E |

Micro Laminate

| | |
|------|--------------|
| 2920 | Marl Micro |
| 2921 | Gypsum Micro |
| 2922 | Clay Micro |

Patina Laminate

| | |
|------|----------------------|
| 2870 | Blonde Bronze Patina |
| 2873 | Instant Iron Patina |

Solid Laminate

| | |
|------|------------------------|
| 2722 | Cream E |
| 2730 | Arctic White |
| 2746 | Black |
| 2759 | Warm White |
| 2811 | Mist E |
| 2883 | Seagull |
| 2884 | Milk |
| 2885 | Dune |
| 2HAA | Persian Salt |
| 2HAB | Rose |
| 2HAC | Indigo |
| 2HAD | Green Citrine E |
| 2HAE | Dark Olivine |
| 2HAF | Cloudy |
| 2HMG | Merle |

Speckle Laminate

| | |
|------|-------------------------|
| 2820 | Coffee Speckle E |
| 2823 | Driftwood Speckle |
| 2824 | Smoke Speckle |
| 2825 | Vanadium Speckle |

Woodgrain Laminate

| | |
|------|--------------------------|
| 2406 | Clear Cherry E |
| 2409 | Clear Maple |
| 2410 | Graphite Walnut |
| 2412 | Natural Cherry |
| 2422 | Medium Cherry E |
| 2511 | Winter on Maple E |
| 2535 | Virginia Walnut |
| 2536 | Blackwood |
| 2538 | Clear Walnut |
| 2592 | Blonde on Maple E |
| 2714 | Natural Walnut E |
| 2HAK | Clear Oak |
| 2HAN | Ash Noce |
| 2HAT | Acacia |
| 2HAW | Ash Wenge |
| 2HBN | Bisque Noce |
| 2HBW | Bisque Wenge |
| 2HCN | Clay Noce |
| 2HCW | Clay Wenge |
| 2HSN | Storm Noce |
| 2HSW | Storm Wenge |
| 2HWA | Grey Kingswood |
| 2HWB | Planked Walnut |
| 2HWD | Resolute Walnut |
| 2HWE | Natural Recon |
| 2HWF | Smoked Walnut E |
| 2HWU | Clay |
| 2HWV | Chalk |
| 2HZA | Waxed Maple |
| 2HZB | Natural Ash |
| 2HZC | Aged Ash |
| 2HZD | Ashwood Oak |
| 2HZE | Ashwood Beige |
| 2HZF | White Washed Birchply |

Group 2

Textured Laminate

| | |
|------|---------------------|
| 2TH2 | Fawn Cypress |
| 2TH4 | Saddle Oak |
| 2TH5 | Veranda Teak |
| 2TH7 | Walnut Heights |
| 2UH1 | Reclaimed Aggregate |
| 2UH2 | Reclaimed Gravel |
| 2UH4 | Cement* |
| 2UH6 | Sheetrock |

*2UH4 Cement has limited availability, determined by product sizing and/or options.

Group 3

Solid Laminate

| | |
|------|-------------|
| 24H1 | Satin White |
| 24H2 | Satin Black |
| 24H3 | Satin Stone |
| 24H4 | Satin Mocha |

Cugino Soft Exclusive Laminate

| |
|-------------------------|
| Burgundy (RAL 4154) |
| Pistachio (RAL 4183) |
| Powder (RAL 4185) |
| Orange Blast (RAL 4186) |

Open Line Laminates

Customers can select laminates that are not offered as standard from select suppliers. Standard grade High-Pressure laminates can be specified in Group 1 (290A) or Group 2 (290B) as indicated below (subject to availability). Group 2 laminates will have extended lead time. Select from any Coalesse or Steelcase standard edge band finish.

Contact Customer Service at 1.800.627.6770 to verify that your laminate selection falls within the categories noted below.

Directional patterns and woodgrains may be used on freestanding systems products, but will not be patterned matched.

Some standard High-Pressure Laminates, may not be available in the appropriate size to produce large products.

Wilsonart (Group 1)
Standards (matte finish)
Exceptions: High definition which must be quoted as a special. Marker board which is group 2.

Nevamar (Group 2)
Solids (textured finish)
Patterns (textured finish)

Formica (Group 2)
Color portfolio (matte finish)
Patterns (matte finish)
Formations (matte finish)

Pionite (Group 2)
Decorative surfaces (suede finish)

Non-Standard Laminates
Coalesse can supply additional laminates for an upcharge. Contact your Coalesse sales consultant for a custom quotation. Custom upcharges will vary based upon the cost of the material specified and additional labor required to manufacture the products. Some non-standard laminates will not be available in the appropriate size to produce large Coalesse products. A sample of the laminate may be requested for approval. Some non-standard laminates may be subject to extended lead times.

E = Excluded

High-Pressure Laminate Matrix

Legend

- = Not available
- = Available
- ▶ See specification pages for details.

Seating

| | 2730 Arctic White | 2746 Black | 2759 Warm White | 2826 White Nebula | 2829 Poppyseed | 2830 Charcoal | 2884 Milk | 2886 Maple | 2887 Amber Cherry | 2890 Folkstone | 2891 Ingot | 2892 Ash | 2895 Natural Walnut | 2896 Dark Cork | 2897 Desert Oak | 2898 Satin Stainless | 290N North Sea | 2406 Clear Cherry E | 2409 Clear Maple | 2410 Graphite Walnut | 2412 Natural Cherry | 2422 Medium Cherry E | 24H1 Satin White | 24H2 Satin Black | 24H3 Satin Stone | 24H4 Satin Mocha | 2511 Winter on Maple E |
|-----------------|-------------------|------------|-----------------|-------------------|----------------|---------------|-----------|------------|-------------------|----------------|------------|----------|---------------------|----------------|-----------------|----------------------|----------------|----------------------------|------------------|----------------------|---------------------|-----------------------------|------------------|------------------|------------------|------------------|-------------------------------|
| Await | ■ | ■ | ■ | • | • | • | • | • | • | • | • | • | • | • | • | • | • | • | • | • | • | • | • | • | • | • | • |
| Coupe | ■ | ■ | ■ | • | • | • | ■ | • | • | ■ | ■ | ■ | • | • | • | • | • | • | • | • | • | • | • | • | • | • | • |
| Cugino Soft | • | • | • | • | • | • | • | • | • | • | • | • | • | • | • | • | • | • | • | • | • | • | • | • | • | • | • |
| Sidewalk Tablet | ■ | ■ | ■ | ■ | ■ | ■ | ■ | ■ | ■ | ■ | ■ | ■ | ■ | ■ | ■ | ■ | ■ | ■ | ■ | ■ | ■ | ■ | ■ | ■ | ■ | ■ | ■ |

Occasional Tables

| | | | | | | | | | | | | | | | | | | | | | | | | | | | |
|---|---|---|---|---|---|---|---|---|---|---|---|---|---|---|---|---|---|---|---|---|---|---|---|---|---|---|---|
| Await | ■ | ■ | ■ | • | • | • | • | • | • | • | • | • | • | • | • | • | • | • | • | • | • | • | • | • | • | • | • |
| Bob Tables | ■ | ■ | ■ | ■ | ■ | ■ | ■ | ■ | ■ | ■ | ■ | ■ | ■ | ■ | ■ | ■ | ■ | ■ | ■ | ■ | ■ | ■ | ■ | ■ | ■ | ■ | ■ |
| CG_1 | ■ | ■ | ■ | ■ | ■ | ■ | ■ | ■ | ■ | ■ | ■ | ■ | ■ | ■ | ■ | ■ | ■ | ■ | ■ | ■ | ■ | ■ | ■ | ■ | ■ | ■ | ■ |
| Circa Tables | ■ | ■ | ■ | ■ | ■ | ■ | ■ | ■ | ■ | ■ | ■ | ■ | ■ | ■ | ■ | ■ | ■ | ■ | ■ | ■ | ■ | ■ | ■ | ■ | ■ | ■ | ■ |
| Coalesse Ensemble In-line Tables and Planters | ■ | ■ | ■ | ■ | ■ | ■ | ■ | ■ | ■ | ■ | ■ | ■ | ■ | ■ | ■ | ■ | ■ | ■ | ■ | ■ | ■ | ■ | ■ | ■ | ■ | ■ | ■ |
| Enea Lottus | ■ | ■ | ■ | ■ | ■ | ■ | ■ | ■ | ■ | ■ | ■ | ■ | ■ | ■ | ■ | ■ | ■ | ■ | ■ | ■ | ■ | ■ | ■ | ■ | ■ | ■ | ■ |
| Lagunitas Tables | ■ | ■ | ■ | ■ | ■ | ■ | ■ | ■ | ■ | ■ | ■ | ■ | ■ | ■ | ■ | ■ | ■ | ■ | ■ | ■ | ■ | ■ | ■ | ■ | ■ | ■ | ■ |
| Lagunitas Focus Nook | ■ | ■ | ■ | ■ | ■ | ■ | ■ | ■ | ■ | ■ | ■ | ■ | ■ | ■ | ■ | ■ | ■ | ■ | ■ | ■ | ■ | ■ | ■ | ■ | ■ | ■ | ■ |
| Montara650 | ■ | ■ | ■ | ■ | ■ | ■ | ■ | ■ | ■ | ■ | ■ | ■ | ■ | ■ | ■ | ■ | ■ | ■ | ■ | ■ | ■ | ■ | ■ | ■ | ■ | ■ | ■ |
| SW_1 | ■ | ■ | ■ | ■ | ■ | ■ | ■ | ■ | ■ | ■ | ■ | ■ | ■ | ■ | ■ | ■ | ■ | ■ | ■ | ■ | ■ | ■ | ■ | ■ | ■ | ■ | ■ |

Tables and Casegoods

| | | | | | | | | | | | | | | | | | | | | | | | | | | | |
|-------------------------|---|---|---|---|---|---|---|---|---|---|---|---|---|---|---|---|---|---|---|---|---|---|---|---|---|---|---|
| Ballet | ■ | ■ | ■ | ■ | ■ | ■ | ■ | ■ | ■ | ■ | ■ | ■ | ■ | ■ | ■ | ■ | ■ | ■ | ■ | ■ | ■ | ■ | ■ | ■ | ■ | ■ | ■ |
| Bob Tables | ■ | ■ | ■ | ■ | ■ | ■ | ■ | ■ | ■ | ■ | ■ | ■ | ■ | ■ | ■ | ■ | ■ | ■ | ■ | ■ | ■ | ■ | ■ | ■ | ■ | ■ | ■ |
| E-Table 2 Top | ■ | ■ | ■ | ■ | ■ | ■ | ■ | ■ | ■ | ■ | ■ | ■ | ■ | ■ | ■ | ■ | ■ | ■ | ■ | ■ | ■ | ■ | ■ | ■ | ■ | ■ | ■ |
| E-Table 2 Laminate Base | ■ | ■ | ■ | • | • | • | ■ | • | • | • | • | • | • | • | ■ | • | • | • | • | • | • | • | • | • | • | • | • |
| Enea Lottus | ■ | ■ | ■ | ■ | ■ | ■ | ■ | ■ | ■ | ■ | ■ | ■ | ■ | ■ | ■ | ■ | ■ | ■ | ■ | ■ | ■ | ■ | ■ | ■ | ■ | ■ | ■ |
| Host Collection | ■ | ■ | ■ | ■ | ■ | ■ | ■ | ■ | ■ | ■ | ■ | ■ | ■ | ■ | ■ | ■ | ■ | ■ | ■ | ■ | ■ | ■ | ■ | ■ | ■ | ■ | ■ |
| Montara650 | ■ | ■ | ■ | ■ | ■ | ■ | ■ | ■ | ■ | ■ | ■ | ■ | ■ | ■ | ■ | ■ | ■ | ■ | ■ | ■ | ■ | ■ | ■ | ■ | ■ | ■ | ■ |
| MoreThanFive | • | • | • | • | • | • | • | • | • | • | • | • | • | • | • | • | • | • | • | • | • | ■ | ■ | ■ | ■ | ■ | ■ |
| Potrero415 | ■ | ■ | ■ | ■ | ■ | ■ | ■ | ■ | ■ | ■ | ■ | ■ | ■ | ■ | ■ | ■ | ■ | ■ | ■ | ■ | ■ | ■ | ■ | ■ | ■ | ■ | ■ |
| Potrero415 Light | ■ | ■ | ■ | ■ | ■ | ■ | ■ | ■ | ■ | ■ | ■ | ■ | ■ | ■ | ■ | ■ | ■ | ■ | ■ | ■ | ■ | ■ | ■ | ■ | ■ | ■ | ■ |
| SW_1 | ■ | ■ | ■ | ■ | ■ | ■ | ■ | ■ | ■ | ■ | ■ | ■ | ■ | ■ | ■ | ■ | ■ | ■ | ■ | ■ | ■ | ■ | ■ | ■ | ■ | ■ | ■ |
| Train | ■ | ■ | ■ | ■ | ■ | ■ | ■ | ■ | ■ | ■ | ■ | ■ | ■ | ■ | ■ | ■ | ■ | ■ | ■ | ■ | ■ | ■ | ■ | ■ | ■ | ■ | ■ |

E = Excluded

High-Pressure Laminate Matrix

Legend

- = Not available
- = Available
- ▶ See specification pages for details.

| Standard Steelcase High-Pressure Laminate (continued) | 2535 Virginia Walnut | 2536 Blackwood | 2538 Clear Walnut | 2592 Blonde on Maple E | 2714 Natural Walnut E | 2722 Cream E | 2811 Mist E | 2820 Coffee Speckle E | 2823 Driftwood Speckle | 2824 Smoke Speckle | 2825 Vanadium Speckle | 2850 Vanadium Fiber | 2852 Tungsten Fiber E | 2854 Vellum Fiber E | 2860 Granite Fiber | 2862 Stucco Fiber E | 2870 Blonde Bronze Patina | 2873 Instant Iron Patina | 2883 Seagull | 2885 Dune | 2920 Marl Micro | 2921 Gypsum Micro | 2922 Clay Micro |
|---|----------------------|----------------|-------------------|-------------------------------|------------------------------|---------------------|--------------------|------------------------------|------------------------|--------------------|-----------------------|---------------------|------------------------------|----------------------------|--------------------|----------------------------|---------------------------|--------------------------|--------------|-----------|-----------------|-------------------|-----------------|
| Seating | | | | | | | | | | | | | | | | | | | | | | | |
| Await | • | • | • | • | • | • | • | • | • | • | • | • | • | • | • | • | • | • | • | • | • | • | • |
| Coupe | • | • | • | • | • | • | • | • | • | • | • | • | • | • | • | • | • | • | • | • | • | • | • |
| Cugino Soft | • | • | • | • | • | • | • | • | • | • | • | • | • | • | • | • | • | • | • | • | • | • | • |
| Sidewalk Tablet | • | • | ■ | ■ | ■ | ■ | ■ | ■ | ■ | ■ | ■ | ■ | ■ | ■ | ■ | ■ | ■ | ■ | ■ | ■ | ■ | ■ | ■ |
| Occasional Tables | | | | | | | | | | | | | | | | | | | | | | | |
| Await | • | • | • | • | • | • | • | • | • | • | • | • | • | • | • | • | • | • | • | • | • | • | • |
| Bob Tables | ■ | ■ | ■ | ■ | ■ | ■ | ■ | ■ | ■ | ■ | ■ | ■ | ■ | ■ | ■ | ■ | ■ | ■ | ■ | ■ | ■ | ■ | ■ |
| CG_1 | ■ | ■ | ■ | ■ | ■ | ■ | ■ | ■ | ■ | ■ | ■ | ■ | ■ | ■ | ■ | ■ | ■ | ■ | ■ | ■ | ■ | ■ | ■ |
| Circa Tables | ■ | ■ | ■ | ■ | ■ | ■ | ■ | ■ | ■ | ■ | ■ | ■ | ■ | ■ | ■ | ■ | ■ | ■ | ■ | ■ | ■ | ■ | ■ |
| Coalesse Ensemble In-line Tables and Planters | ■ | ■ | ■ | ■ | ■ | ■ | ■ | ■ | ■ | ■ | ■ | ■ | ■ | ■ | ■ | ■ | ■ | ■ | ■ | ■ | ■ | ■ | ■ |
| Enea Lottus | ■ | ■ | ■ | ■ | ■ | ■ | ■ | ■ | ■ | ■ | ■ | ■ | ■ | ■ | ■ | ■ | ■ | ■ | ■ | ■ | ■ | ■ | ■ |
| Lagunitas Tables | ■ | ■ | ■ | ■ | ■ | ■ | ■ | ■ | ■ | ■ | ■ | ■ | ■ | ■ | ■ | ■ | ■ | ■ | ■ | ■ | ■ | ■ | ■ |
| Lagunitas Focus Nook | ■ | ■ | ■ | ■ | ■ | ■ | ■ | ■ | ■ | ■ | ■ | ■ | ■ | ■ | ■ | ■ | ■ | ■ | ■ | ■ | ■ | ■ | ■ |
| Montara650 | ■ | ■ | ■ | ■ | ■ | ■ | ■ | ■ | ■ | ■ | ■ | ■ | ■ | ■ | ■ | ■ | ■ | ■ | ■ | ■ | ■ | ■ | ■ |
| SW_1 | ■ | ■ | ■ | ■ | ■ | ■ | ■ | ■ | ■ | ■ | ■ | ■ | ■ | ■ | ■ | ■ | ■ | ■ | ■ | ■ | ■ | ■ | ■ |
| Tables and Casegoods | | | | | | | | | | | | | | | | | | | | | | | |
| Ballet | ■ | ■ | ■ | ■ | ■ | ■ | ■ | ■ | ■ | ■ | ■ | ■ | ■ | ■ | ■ | ■ | ■ | ■ | ■ | ■ | ■ | ■ | ■ |
| Bob Tables | ■ | ■ | ■ | ■ | ■ | ■ | ■ | ■ | ■ | ■ | ■ | ■ | ■ | ■ | ■ | ■ | ■ | ■ | ■ | ■ | ■ | ■ | ■ |
| E-Table 2 Top | ■ | ■ | ■ | ■ | ■ | ■ | ■ | ■ | ■ | ■ | ■ | ■ | ■ | ■ | ■ | ■ | ■ | ■ | ■ | ■ | ■ | ■ | ■ |
| E-Table 2 Laminate Base | ■ | ■ | ■ | • | • | • | • | • | • | • | • | • | • | • | • | • | • | • | • | • | • | • | • |
| Enea Lottus | ■ | ■ | ■ | ■ | ■ | ■ | ■ | ■ | ■ | ■ | ■ | ■ | ■ | ■ | ■ | ■ | ■ | ■ | ■ | ■ | ■ | ■ | ■ |
| Host Collection | ■ | ■ | ■ | ■ | ■ | ■ | ■ | ■ | ■ | ■ | ■ | ■ | ■ | ■ | ■ | ■ | ■ | ■ | ■ | ■ | ■ | ■ | ■ |
| Montara650 | ■ | ■ | ■ | ■ | ■ | ■ | ■ | ■ | ■ | ■ | ■ | ■ | ■ | ■ | ■ | ■ | ■ | ■ | ■ | ■ | ■ | ■ | ■ |
| Potrero415 | ■ | ■ | ■ | ■ | ■ | ■ | ■ | ■ | ■ | ■ | ■ | ■ | ■ | ■ | ■ | ■ | ■ | ■ | ■ | ■ | ■ | ■ | ■ |
| Potrero415 Light | ■ | ■ | ■ | ■ | ■ | ■ | ■ | ■ | ■ | ■ | ■ | ■ | ■ | ■ | ■ | ■ | ■ | ■ | ■ | ■ | ■ | ■ | ■ |
| SW_1 | ■ | ■ | ■ | ■ | ■ | ■ | ■ | ■ | ■ | ■ | ■ | ■ | ■ | ■ | ■ | ■ | ■ | ■ | ■ | ■ | ■ | ■ | ■ |
| Train | ■ | ■ | ■ | ■ | ■ | ■ | ■ | ■ | ■ | ■ | ■ | ■ | ■ | ■ | ■ | ■ | ■ | ■ | ■ | ■ | ■ | ■ | ■ |

E = Excluded

Laminate

High-Pressure Laminate Palette *continued*

► See *High-Pressure Laminate Matrix* for availability by product list, page 42.

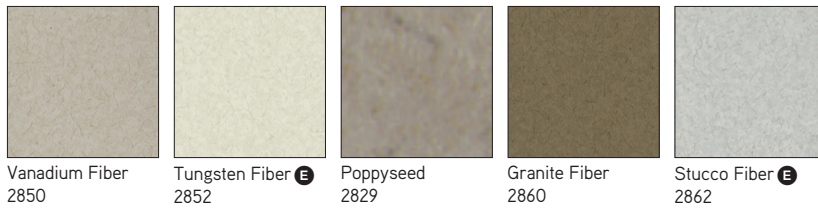
Standard Coalesse High-Pressure Laminate



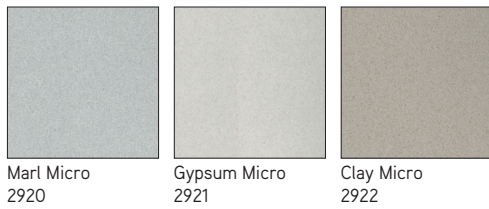
*Available on Await only.

Standard Steelcase High-Pressure Laminate

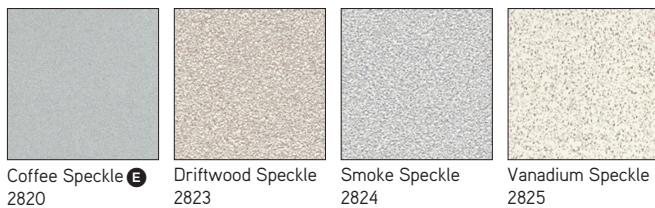
Laminate



Micro Laminate



Speckle Laminate



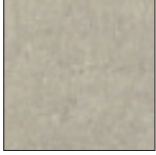
E = Excluded

High-Pressure Laminate Palette

► See *High-Pressure Laminate Matrix* for availability by product list, page 42.

Standard Steelcase High-Pressure Laminate, continued

Micro Laminate

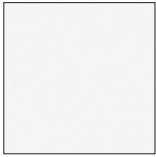


Blonde Bronze
Patina
2870



Instant Iron Patina
2873

Solid Laminate



Satin White
24H1



Satin Black
24H2



Satin Stone
24H3



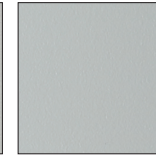
Satin Mocha
24H4



Cream **E**
2722



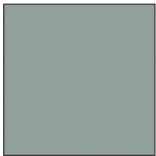
Mist **E**
2811



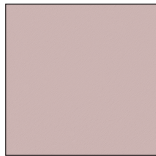
Seagull
2883



Dune
2885



Persian Salt
2HAA



Rose
2HAB



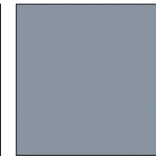
Indigo
2HAC



Green Citrine **E**
2HAD



Dark Olivine
2HAE



Cloudy
2HAF



Merle
2HMG

E = Excluded

High-Pressure Laminate Palette *continued*

► See *High-Pressure Laminate Matrix* for availability by product list, page 42.

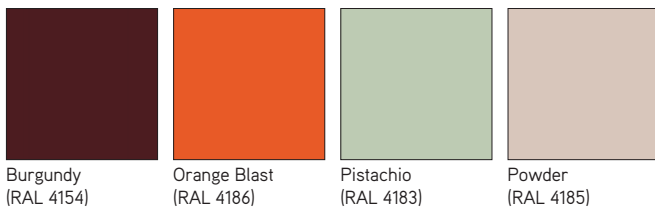
Woodgrain Laminate



Textured Laminate



Cugino Soft Exclusive Finishes



E = Excluded

Coalesse

High-Pressure Laminate Palette

Laminate

Laminate Edge Band Matrix

Legend

- = Not available
- = Available
- ▶ See specification pages for details.

| | | | | | | | | | | | | | | | | | | | | | | | | | | | | | | | | |
|------------|------------------|----------|------------|---------------------|--------------------|----------------------|-------------------------------|------------------------------|-----------|--------------|----------------|-------------------|-------------------|----------------|----------------|-------------|----------------|------------|----------------|----------------|------------|------------|-------------------|-----------|-------------|-----------------------------|-------------------|-------------|-------------|----------------|----------------------|-------------------|
| 6000 Black | 6009 Artic White | 6011 Ash | 6012 Ingot | 6034 Natural Cherry | 6036 Medium Cherry | 6037 Winter on Maple | 6038 Blonde on Maple E | 6041 Natural Walnut E | 6052 Milk | 6053 Seagull | 6086 Folkstone | 6090 Amber Cherry | 6091 Fusion Maple | 6093 Dove Grey | 6125 Graystone | 6126 Greige | 6127 Stonedust | 6128 Taupe | 6130 Dark Gray | 6134 North Sea | 6169 Stone | 6170 Mocha | 61AA Persian Salt | 61AB Rose | 61AC Indigo | 61AD Green Citrine E | 61AE Dark Olivine | 61AF Cloudy | 6213 Acacia | 6219 Clear Oak | 6231 Graphite Walnut | 6234 Clear Cherry |
|------------|------------------|----------|------------|---------------------|--------------------|----------------------|-------------------------------|------------------------------|-----------|--------------|----------------|-------------------|-------------------|----------------|----------------|-------------|----------------|------------|----------------|----------------|------------|------------|-------------------|-----------|-------------|-----------------------------|-------------------|-------------|-------------|----------------|----------------------|-------------------|

Occasional Tables

| | | | | | | | | | | | | | | | | | | | | | | | | | | | | | | | | | |
|-----------------------|---|---|---|---|---|---|---|---|---|---|---|---|---|---|---|---|---|---|---|---|---|---|---|---|---|---|---|---|---|---|---|---|---|
| Await Table 3 mm Edge | ■ | ■ | • | • | • | • | • | • | • | • | • | • | • | • | • | • | • | • | • | • | ■ | • | • | • | • | • | • | • | • | • | • | • | • |
| Enea Lottus | ■ | • | • | • | • | • | • | • | • | • | • | • | • | • | • | • | • | • | • | • | • | • | • | • | • | • | • | • | • | • | • | • | • |
| Montara650 | ■ | ■ | ■ | ■ | ■ | ■ | ■ | ■ | ■ | ■ | ■ | ■ | ■ | ■ | • | ■ | • | ■ | • | • | • | ■ | ■ | ■ | ■ | ■ | ■ | ■ | ■ | ■ | ■ | ■ | ■ |

Tables and Casegoods

| | | | | | | | | | | | | | | | | | | | | | | | | | | | | | | | | | |
|---|---|---|---|---|---|---|---|---|---|---|---|---|---|---|---|---|---|---|---|---|---|---|---|---|---|---|---|---|---|---|---|---|---|
| Await Table 3 mm Edge | ■ | ■ | • | • | • | • | • | • | • | • | • | • | • | • | • | • | • | • | • | • | ■ | • | • | • | • | • | • | • | • | • | • | • | |
| Ballet Ribbed Vinyl Edge | ■ | • | • | • | • | • | • | • | • | • | • | • | • | • | • | • | • | • | • | • | • | • | • | • | • | • | • | • | • | • | • | • | |
| Bob Tables | ■ | ■ | ■ | ■ | ■ | ■ | ■ | ■ | ■ | ■ | ■ | ■ | ■ | ■ | • | ■ | • | ■ | • | ■ | • | ■ | ■ | ■ | ■ | ■ | ■ | ■ | ■ | ■ | ■ | ■ | ■ |
| Coalesse Ensemble In-line Tables and Planters | ■ | ■ | ■ | ■ | ■ | ■ | ■ | ■ | ■ | ■ | ■ | ■ | ■ | ■ | • | ■ | • | ■ | • | ■ | • | ■ | ■ | ■ | ■ | ■ | ■ | ■ | ■ | ■ | ■ | ■ | ■ |
| E-Table 2 Convex Vinyl Edge | ■ | • | • | • | • | • | • | • | • | • | • | • | • | • | • | • | • | • | • | • | • | • | • | • | • | • | • | • | • | • | • | • | • |
| E-Table 2 3 mm Edge | ■ | ■ | ■ | ■ | ■ | ■ | ■ | ■ | ■ | ■ | ■ | ■ | ■ | ■ | • | ■ | • | ■ | • | ■ | • | ■ | ■ | ■ | ■ | ■ | ■ | ■ | ■ | ■ | ■ | ■ | ■ |
| Enea Lottus Phenolic Edge | ■ | • | • | • | • | • | • | • | • | • | • | • | • | • | • | • | • | • | • | • | • | • | • | • | • | • | • | • | • | • | • | • | • |
| Host Collection | • | • | • | • | • | • | • | • | • | • | • | • | • | • | • | • | • | • | • | • | • | • | • | • | • | • | • | • | • | • | • | • | • |
| Lagunitas Table 3 mm Edge | ■ | ■ | ■ | ■ | ■ | ■ | ■ | ■ | ■ | ■ | ■ | ■ | ■ | ■ | • | ■ | • | ■ | • | ■ | • | ■ | ■ | ■ | ■ | ■ | ■ | ■ | ■ | ■ | ■ | ■ | ■ |
| Lagunitas Focus Nook | ■ | ■ | ■ | ■ | ■ | ■ | ■ | ■ | ■ | ■ | ■ | ■ | ■ | ■ | • | ■ | • | ■ | • | ■ | • | ■ | ■ | ■ | ■ | ■ | ■ | ■ | ■ | ■ | ■ | ■ | ■ |
| Montara650 | ■ | ■ | ■ | ■ | ■ | ■ | ■ | ■ | ■ | ■ | ■ | ■ | ■ | ■ | • | ■ | • | ■ | • | ■ | • | ■ | ■ | ■ | ■ | ■ | ■ | ■ | ■ | ■ | ■ | ■ | ■ |
| Potrero415 | ■ | ■ | ■ | ■ | ■ | ■ | ■ | ■ | ■ | ■ | ■ | ■ | ■ | ■ | • | ■ | • | ■ | • | ■ | • | ■ | ■ | ■ | ■ | ■ | ■ | ■ | ■ | ■ | ■ | ■ | ■ |
| Potrero415 Light | ■ | ■ | ■ | ■ | ■ | ■ | ■ | ■ | ■ | ■ | ■ | ■ | ■ | ■ | • | ■ | • | ■ | • | ■ | • | ■ | ■ | ■ | ■ | ■ | ■ | ■ | ■ | ■ | ■ | ■ | ■ |
| SW_1 | ■ | ■ | ■ | ■ | ■ | ■ | ■ | ■ | ■ | ■ | ■ | ■ | ■ | ■ | • | ■ | • | ■ | • | ■ | • | ■ | ■ | ■ | ■ | ■ | ■ | ■ | ■ | ■ | ■ | ■ | ■ |
| Train Signature Edge | ■ | • | • | • | • | • | • | • | • | • | • | • | • | • | • | • | • | • | • | • | • | • | • | • | • | • | • | • | • | • | • | • | • |

E = Excluded

Laminate Edge Band Matrix *continued*

Legend

- = Not available
- = Available
- ▶ See specification pages for details.

| |
|--------------------------|
| 6710 Storm Noce |
| 6D10 Silver Metallic |
| 6D11 Black |
| 6D12 White |
| 6T02 Fawn Cypress |
| 6T04 Saddle Oak |
| 6T05 Veranda Teak |
| 6T07 Walnut Heights |
| 2UH1 Reclaimed Aggregate |
| 2UH2 Reclaimed Gravel |
| 2UH4 Cement |
| 2UH6 Sheetrock |

Occasional Tables

| | | | | | | | | | | | | |
|-----------------------|---|---|---|---|---|---|---|---|---|---|---|---|
| Await Table 3 mm Edge | • | • | • | • | • | • | • | • | • | • | • | • |
| Enea Lottus | • | • | • | • | • | • | • | • | • | • | • | • |
| Montara650 | ■ | • | • | • | ■ | ■ | ■ | ■ | ■ | ■ | ■ | ■ |

Tables and Casegoods

| | | | | | | | | | | | | |
|---|---|---|---|---|---|---|---|---|---|---|---|---|
| Await Table 3 mm Edge | • | • | • | • | • | • | • | • | • | • | • | • |
| Ballet Ribbed Vinyl Edge | • | • | • | • | • | • | • | • | • | • | • | • |
| Bob Tables | ■ | • | • | • | ■ | ■ | ■ | ■ | ■ | ■ | ■ | ■ |
| Coalesse Ensemble In-line Tables and Planters | ■ | • | • | • | ■ | ■ | ■ | ■ | ■ | ■ | ■ | ■ |
| E-Table 2 Convex Vinyl Edge | • | • | • | • | • | • | • | • | • | • | • | • |
| E-Table 2 3 mm Edge | ■ | • | • | • | ■ | ■ | ■ | ■ | ■ | ■ | • | ■ |
| Enea Lottus Phenolic Edge | • | • | • | • | • | • | • | • | • | • | • | • |
| Host Collection | • | • | • | • | • | • | • | • | • | • | • | • |
| Lagunitas Table 3 mm Edge | ■ | • | • | • | ■ | ■ | ■ | ■ | ■ | ■ | ■ | ■ |
| Lagunitas Focus Nook | ■ | • | • | • | ■ | ■ | ■ | ■ | ■ | ■ | ■ | ■ |
| Montara650 | ■ | • | • | • | ■ | ■ | ■ | ■ | ■ | ■ | ■ | ■ |
| Potrero415 | ■ | • | • | • | ■ | ■ | ■ | ■ | ■ | ■ | • | ■ |
| Potrero415 Light | ■ | • | • | • | ■ | ■ | ■ | ■ | ■ | ■ | ■ | ■ |
| SW_1 | ■ | • | • | • | ■ | ■ | ■ | ■ | ■ | ■ | ■ | ■ |
| Train Signature Edge | • | • | • | • | • | • | • | • | • | • | • | • |

Coalesse

Laminate Edge Band Matrix

Recommended Worksurface 3 mm Edge Finishes

For E-Table2, Lagunitas, Montara650, Potrero415, and SW_1

Recommended Edge Colors—Coalesse and Steelcase High-Pressure Laminate

Edges

The recommended edge color will complement the laminate color you specify. Edge color is specified separately.

| Laminate Color | Recommended 3 mm Edge Color |
|-------------------------------|-----------------------------------|
| Solid Laminate | |
| Coalesse: | |
| 2830 Charcoal | 6000 Black |
| 2890 Folkstone | 6086 Folkstone |
| 2891 Ingot | 6012 Ingot |
| 2892 Ash | 6011 Ash |
| Pattern Laminate | |
| Coalesse: | |
| 2826 White Nebula | 6635 Dawn E |
| 2829 Poppyseed | 6249 Platinum Solid |
| 2896 Dark Cork | 6695 Midnight Solid |
| 2898 Satin Stainless | 6093 Dove Grey |
| Woodgrain Laminate | |
| Coalesse: | |
| 2886 Maple | 6091 Fusion Maple |
| 2887 Amber Cherry | 6090 Amber Cherry |
| 2895 Natural Walnut | 6012 Ingot |
| 2897 Desert Oak | 6128 Taupe |
| Solid Laminate | |
| Steelcase: | |
| 24H1 Satin White | 6009 Arctic White |
| 24H2 Satin Black | 6000 Black |
| 24H3 Satin Stone | 6169 Stone |
| 24H4 Satin Mocha | 6170 Mocha |
| 2722 Cream E | 6631 Cream E |
| 2730 Arctic White | 6009 Arctic White |
| 2746 Black | 6000 Black |
| 2759 Warm White | 6655 Warm White |
| 2811 Mist E | 6636 Mist |
| 2883 Seagull | 6053 Seagull |
| 2884 Milk | 6052 Milk |
| 2885 Dune | 6654 Sand |
| 2HAA Persian Salt | 61AA Persian Salt |
| 2HAB Rose | 61AB Rose |
| 2HAC Indigo | 61AC Indigo |
| 2HAD Green Citrine E | 61AD Green Citrine E |
| 2HAE Dark Olivine | 61AE Dark Olivine |
| 2HAF Cloudy | 61AF Cloudy |
| 2HMG Merle | 6527 Merle |
| 2HWU Clay | 66WU Clay |
| 2HWV Chalk | 66WV Chalk |
| Woodgrain Laminate | |
| Steelcase: | |
| 2406 Clear Cherry E | 6234 Clear Cherry |
| 2409 Clear Maple | 6237 Clear Maple |
| 2410 Graphite Walnut | 6231 Graphite Walnut |
| 2412 Natural Cherry | 6034 Natural Cherry |
| 2422 Medium Cherry E | 6036 Medium Cherry |
| 2511 Winter on Maple E | 6037 Winter on Maple |
| 2535 Virginia Walnut | 6242 Virginia Walnut |
| 2536 Blackwood | 6243 Blackwood |
| 2538 Clear Walnut | 6245 Clear Walnut |
| 2592 Blonde on Maple E | 6038 Blonde on Maple E |
| 2714 Natural Walnut E | 6041 Natural Walnut E |

E = Excluded

Recommended Worksurface 3 mm Edge Finishes

For E-Table2, Lagunitas, Montara650, Potrero415, and SW_1

Recommended Edge Colors—Coalesse and Steelcase High-Pressure Laminate, continued

Edges

The recommended edge color will complement the laminate color you specify. Edge color is specified separately

| Laminate Color | Recommended 3 mm Edge Color |
|--------------------------------------|-----------------------------|
| Woodgrain Laminate, continued | |
| Steelcase: | |
| 2HAK Clear Oak | 6219 Clear Oak |
| 2HAN Ash Noce | 6707 Ash Noce |
| 2HAT Acacia | 6213 Acacia |
| 2HAW Ash Wenge | 6703 Ash Wenge |
| 2HBN Bisque Noce | 6708 Bisque Noce |
| 2HBW Bisque Wenge | 6705 Bisque Wenge |
| 2HCN Clay Noce | 6709 Clay Noce |
| 2HCW Clay Wenge | 6706 Clay Wenge |
| 2HSN Storm Noce | 6710 Storm Noce |
| 2HSW Storm Wenge | 6704 Storm Wenge |
| 2HZA Waxed Maple | 6X50 Waxed Maple |
| 2HZB Natural Ash | 6X51 Natural Ash |
| 2HZC Aged Ash | 6X10 Aged Ash |
| 2HZD Ashwood Oak | 6X52 Ashwood Oak |
| 2HZE Ashwood Beige | 6X53 Ashwood Beige |
| 2HZF White Washed Birchply | 6X54 White Washed Birchply |
| Fiber Laminate | |
| Steelcase: | |
| 2850 Vanadium Fiber | 6654 Sand |
| 2854 Vellum Fiber E | 6655 Warm White |
| 2860 Granite Fiber | 6000 Black |
| 2862 Stucco Fiber E | 6053 Seagull |
| Micro Laminate | |
| Steelcase: | |
| 2920 Marl Micro | 6053 Seagull |
| 2921 Gypsum Micro | 6654 Sand |
| 2922 Clay Micro | 6654 Sand |
| Patina Laminate | |
| Steelcase: | |
| 2870 Blonde Bronze Patina | 6654 Sand |
| 2873 Instant Iron Patina | 6527 Merle |
| Speckle Laminate | |
| Steelcase: | |
| 2820 Coffee Speckle E | 6631 Cream E |
| 2823 Driftwood Speckle | 6631 Cream E |
| 2824 Smoke Speckle | 6636 Mist |
| 2825 Vanadium Speckle | 6619 Ice E |
| Textured Laminate | |
| Steelcase: | |
| 2TH2 Fawn Cypress | 6T02 Fawn Cypress |
| 2TH4 Saddle Oak | 6T04 Saddle Oak |
| 2TH5 Veranda Teak | 6T05 Veranda Teak |
| 2TH7 Walnut Heights | 6T07 Walnut Heights |
| 2UH1 Reclaimed Aggregate | 6T08 Reclaimed Aggregate |
| 2UH2 Reclaimed Gravel | 6T09 Reclaimed Gravel |
| 2UH4 Cement | 6T10 Cement |
| 2UH6 Sheetrock | 6T12 Sheetrock |

E = Excluded

Glass

Glass

Not all glass selections are available on every product. Refer to glass matrix for availability by product.

Coalesse Back-Painted Glass

- 6720 Sand
- 6721 Pewter
- 6722 Mojave
- 6723 Terra
- 6724 Jade
- 6725 Ocean
- ACM Moonlight
- ACS Sage
- ACP Poppy
- ACG Goldenrod
- ACB Black
- ACC Sea Salt/Crystal Spring

Steelcase Back-Painted Glass

- 6586 Green Citrine
- 6BB1 Cloud
- 6BB2 Rose Quartz
- 6BB3 Olivine
- 6BB4 Electric Indigo

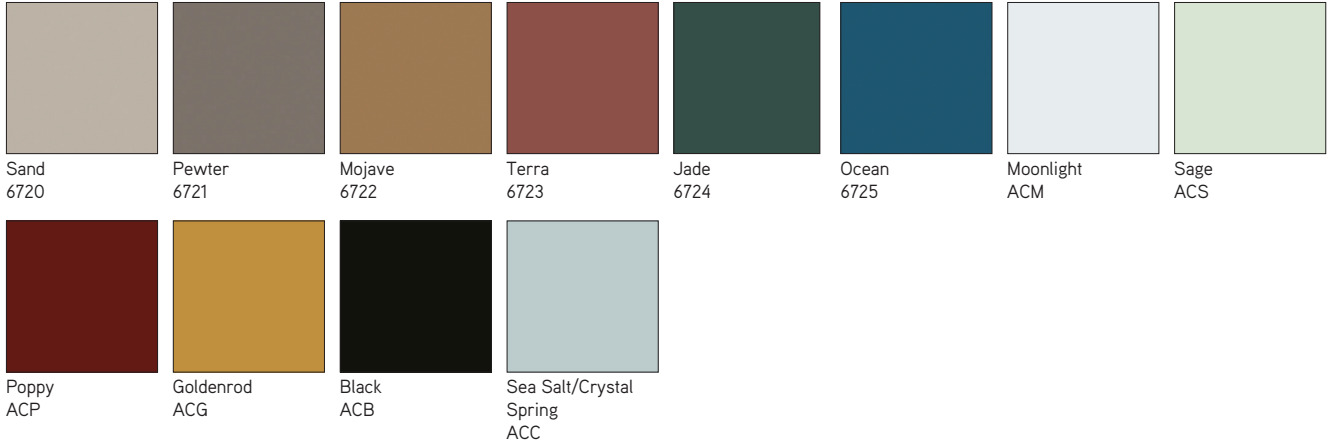
Glass

- 6511 Acid Etched
- 651A Acid Etched Smoked
- AC Absolute Clear
- CG Clear Green

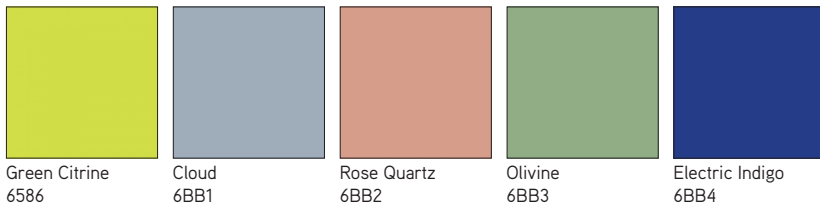
Glass Palette

► See *Glass Matrix* for availability by product list, page 57.

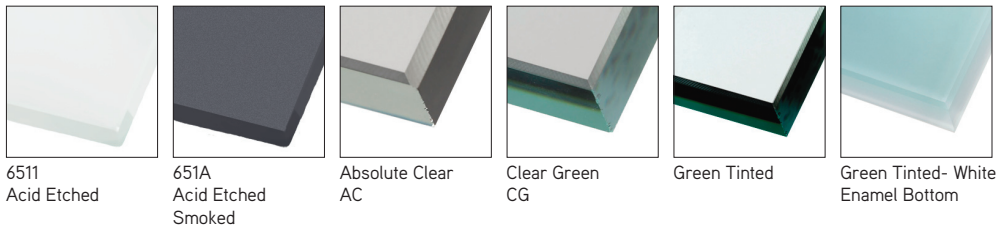
Coalesse Back-Painted Glass



Steelcase Back-Painted Glass



Glass



Metal/Paint

Metal/Paint

Coalesse powder coats all painted metal components for an exceptionally durable, environmentally responsible finish — eliminating VOC's (volatile organic compounds) from being released into the environment. Electrostatically charged powder coat material is applied to an exacting thickness and then temperature baked, resulting in a smooth, flawless finish that is abrasion and impact resistant. The following Coalesse metal finishes are available:

Paint

Coalesse Standard Paint—Neutrals

Group 1

- 4138 Graphite Gloss
- 4140 Arctic White Gloss
- 4141 Platinum Matte
- 4142 Platinum Gloss
- 4144 Black Gloss (formerly anthracite gloss)
- 4145 Milk Gloss
- 4146 Champagne Matte
- 4147 Champagne Gloss
- 4180 Graphite Matte
- 4242 Milk Matte
- 4710 Low Gloss Black
- 7196 Midnight Brown Textured
- 7197 Anthracite Textured

Coalesse Standard Paint—Colors

Group 1

- 4065 Blue Ink Textured
- 4066 Ocean Textured
- 4067 Ice Textured
- 4068 Olive Textured
- 4069 Honey Textured
- 4070 Currant Textured
- 4071 Saffron Textured

Steelcase Paint

Accent Paints

Group 3

- 1ATG Rose Quartz
- 4AV3 Blue Jay
- 4AV4 Baltic
- 4AX1 Citron
- 4AY2 Chili
- 4AZ5 Marlin
- 4CZ5 Honey
- 4CZ6 Lagoon
- 4CZ8 Light Peacock

Lux Coatings

Group 3

- 4B20 Obsidian
- 4B22 Matte Brass
- 4B23 Burnished Bronze
- 4B24 Night Bronze
- 4B25 Matte Copper
- 4B26 Smoked Mica
- 4B29 Cast Iron

Applies to: Enea Lottus

- 4062 Anthracite Grey Textured
- 4063 Cool Grey Textured
- 4064 Sand Textured
- 4218 Platinum Silver
- 7207 Black Textured
- 7241 Arctic White Textured

Applies to: Enea café wood stool

(Available on seat casting only)

- 4062 Anthracite Grey Textured
- 7207 Black
- 7241 Arctic White

Applies to: Exponents (Base, Accent Ribbon, Handle, and Grommet)

- 4135 Black Matte
- 4141 Platinum Matte

Applies to: Exponents mobile displays (Base, Handle, and Inner Frame)

- 4135 Black Matte
- 4145 Milk Gloss

Applies to: LessThanFive Essential Series

- 4283 Cloud Matte
- 4284 Sand Matte
- 4285 Black Matte
- 4286 Ice Matte

Applies to: LessThanFive

- 4287 Slate Blue Matte
- 4288 Fern Matte
- 4289 Lemongrass Matte
- 4290 Coral Matte
- 4291 Poppy Matte
- 4292 Currant Matte
- 4293 Black Fade Matte
- 4294 White Fade Matte

Applies to: MoreThanFive

- 7207 Black Textured

Metal

Polished Aluminum

Applies to: Lox chair, Potrero415, and Bindu conference bases

- 8046 Polished Aluminum

Applies to: Bob, SW_1, and Massaud conference bases

- 8040 Aluminum Matte Polished

Chrome

- 9201 Chrome
- 9207 Polished trivalent chrome
- 9208 Etched trivalent chrome

Potrero415 and Potrero415 Light Leg Rings

- 9201 Chrome
- 9260 Black Chrome
- 9261 Copper

Outdoor Finishes

- 4251 EMU Brown
- 4257 Antique Iron
- 7234 EMU Black
- 7271 EMU White
- 7294 EMU Grey/Green
- 7296 EMU Taupe
- 7321 Cement
- 7389 Curry Yellow
- 7395 Marine Blue
- 7396 Military Green
- 7397 Maple Red

Carbon Weave

LessThanFive Woven Carbon Fiber

4233 Carbon Weave*
*4233 Carbon Weave has a clear coat finish over woven carbon fiber.

Custom Paint

PerfectMatch

Group 3

Custom Capabilities

PerfectMatch Custom Color empowers more personal expression by expanding your color choices through our custom capabilities. Choose any standard paint color or any color to match on select, preset Coalesse products, through a Group 3 paint upcharge. Consult the paint matrix for eligible products and the Coalesse specification guides for pricing.

Tip: Other Coalesse product lines can be quoted through Specials.

Gloss Levels

Custom color requests can be matched in a smooth, non-metallic finish with a gloss (40% gloss level) or matte (12% gloss level) finish. Metallic paints are not available through the custom color program, but can be matched in an opaque, non-metallic finish.

Strike-off Sample

Strike-off samples are not required for standard Coalesse or Steelcase finishes. Pantone® color matches do not require approval, but may be requested at the cost listed below. All other color match requests require a strike-off and customer approval of the strike-off. Strike-offs are produced within 2 weeks and are \$500 net per color matched. A dealer PO number is required to initiate the process. We have the following Pantone color books to reference: solid colors (coated and uncoated), home interiors (lacquered on paper), neon/pastel (coated and uncoated), and metallic (coated). For all other matches, a 2" x 2" representation of the color to be matched is needed. A color card/chip is recommended, but fabrics, carpets, accessories, or other samples can be used.

Commercially Accepted Tolerances

The color match from the custom color sample to actual production will be within commercially accepted tolerances. Custom paint colors are formulated to minimize shifts under different lighting conditions. Particular care should be taken if high-intensity discharge light is used at the installation because it can give the appearance of a mismatch between color sample and product.

Custom Color Request Process

1. Initiate a custom color request through our Concierge Specials team:
1.800.627.6770
specialorders@coalesse.com
 - Include Pantone reference number
 - If sending in a physical sample to be matched, please contact our Concierge Specials team for the ship-to address.
 - If strike-off is required or requested, include dealer PO number to charge \$500 net fee.
 - Color match requests are processed within two weeks of request, or receipt of physical samples.
2. Upon completion of match or strike-off approval, a special paint finish code will be made available for order entry.
3. Use the custom color finish code to place your order:
 - Group 3 paint upcharge will apply
 - Select custom paint finish 4990 (Group 3 paint) and then enter custom color finish code that has been provided.
 - If a Steelcase PerfectMatch paint has already been approved with ID number, this code can be used to place an order.
 - Additional lead time of 20 working days added to standard published lead time after order is received.

Coalesse

Custom Paint

Metal/Paints Matrix

Legend

- = Not available
- = Available
- ▶ See specification pages for details.

Seating

| |
|-----------------------|
| Bindu Conference |
| Bindu Guest |
| Bob |
| Capa |
| Chord |
| Circa |
| Coalesse Ensemble |
| Coupe |
| Enea |
| Enea Café Wood Stool |
| Enea Lottus |
| Lagunitas |
| Lox Chair |
| Marien152 |
| Massaud Conference |
| Massaud Lounge |
| Millbrae |
| Montara650 |
| Sistema Lounge System |
| SW_1 |
| Switch |
| Visalia |
| Wrapp |

Occasional Tables

| |
|-------------|
| Bob |
| Circa |
| Enea Lottus |
| Lagunitas |
| Millbrae |
| Montara650 |
| Switch |
| SW_1 |

| Coalesse Standard Paint—Neutrals | | | | | | | | | | | | | Coalesse Standard Paint—Colors | | | | | | | | Product Line Exclusives | | | | | | | |
|----------------------------------|---------------------|-------------------------|---------------------|---------------------|------------------|-----------------|----------------------|----------------------|---------------------------|---------------------|---------------------------|-----------------|--------------------------------|------------------------------|--------------------------|------------------------|---------------------|-------------------|---------------------|---------------------|-------------------------|-----------------------|---------------------------------|---|-------------------------|-----------------------------------|--------------------------------|---|
| 4135 Black Matte | 4138 Graphite Gloss | 4140 Arctic White Gloss | 4141 Platinum Matte | 4142 Platinum Gloss | 4144 Black Gloss | 4145 Milk Gloss | 4146 Champagne Matte | 4147 Champagne Gloss | 4148 Midnight Brown Gloss | 4180 Graphite Matte | 4193 Midnight Brown Matte | 4242 Milk Matte | 4710 Low Gloss Black | 7196 Midnight Brown Textured | 7197 Anthracite Textured | 4065 Blue Ink Textured | 4066 Ocean Textured | 4067 Ice Textured | 4068 Olive Textured | 4069 Honey Textured | 4070 Currant Textured | 4071 Saffron Textured | LessThanFive Exclusive Finishes | LessThanFive Essential Exclusive Finishes | Enea Exclusive Finishes | Enea Café Wood Exclusive Finishes | Enea Lottus Exclusive Finishes | |
| Bindu Conference | • | • | • | • | • | • | • | • | • | • | • | • | • | • | • | • | • | • | • | • | • | • | • | • | • | • | • | • |
| Bindu Guest | • | • | • | • | ■ | • | • | • | • | • | • | • | • | • | • | • | • | • | • | • | • | • | • | • | • | • | • | • |
| Bob | • | ■ | • | ■ | ■ | ■ | ■ | ■ | ■ | ■ | ■ | ■ | ■ | ■ | ■ | ■ | ■ | ■ | ■ | ■ | ■ | ■ | ■ | ■ | ■ | ■ | ■ | ■ |
| Capa | • | • | • | • | • | • | • | • | • | • | • | • | • | • | • | • | • | • | • | • | • | • | • | • | • | • | • | • |
| Chord | • | • | • | • | ■ | • | • | • | • | • | • | • | • | • | • | • | • | • | • | • | • | • | • | • | • | • | • | • |
| Circa | • | ■ | ■ | ■ | ■ | ■ | ■ | ■ | ■ | ■ | ■ | ■ | ■ | ■ | ■ | ■ | ■ | ■ | ■ | ■ | ■ | ■ | ■ | ■ | ■ | ■ | ■ | ■ |
| Coalesse Ensemble | • | ■ | ■ | ■ | ■ | ■ | ■ | ■ | ■ | ■ | ■ | ■ | ■ | ■ | ■ | ■ | ■ | ■ | ■ | ■ | ■ | ■ | ■ | ■ | ■ | ■ | ■ | ■ |
| Coupe | • | ■ | ■ | • | ■ | ■ | • | • | ■ | ■ | ■ | ■ | ■ | ■ | ■ | ■ | ■ | ■ | ■ | ■ | ■ | ■ | ■ | ■ | ■ | ■ | ■ | ■ |
| Enea | • | • | • | • | • | • | • | • | • | • | • | • | • | • | • | • | • | • | • | • | • | • | • | • | • | • | • | • |
| Enea Café Wood Stool | • | • | • | • | • | • | • | • | • | • | • | • | • | • | • | • | • | • | • | • | • | • | • | • | • | • | • | • |
| Enea Lottus | • | • | ■ | • | ■ | ■ | • | ■ | • | • | • | • | • | • | • | ■ | ■ | ■ | ■ | ■ | ■ | ■ | ■ | ■ | ■ | ■ | ■ | ■ |
| Lagunitas | • | • | • | ■ | • | • | • | • | • | • | • | • | ■ | • | • | • | • | • | • | • | • | • | • | • | • | • | • | ■ |
| Lox Chair | • | • | • | • | • | • | • | • | • | • | • | • | • | • | • | • | • | • | • | • | • | • | • | • | • | • | • | • |
| Marien152 | • | ■ | • | ■ | ■ | ■ | ■ | ■ | ■ | ■ | ■ | ■ | ■ | ■ | ■ | ■ | ■ | ■ | ■ | ■ | ■ | ■ | ■ | ■ | ■ | ■ | ■ | ■ |
| Massaud Conference | • | ■ | • | ■ | ■ | ■ | ■ | ■ | ■ | ■ | ■ | ■ | ■ | ■ | ■ | ■ | ■ | ■ | ■ | ■ | ■ | ■ | ■ | ■ | ■ | ■ | ■ | ■ |
| Massaud Lounge | • | • | • | ■ | • | • | • | ■ | • | ■ | ■ | ■ | ■ | ■ | ■ | ■ | ■ | ■ | ■ | ■ | ■ | ■ | ■ | ■ | ■ | ■ | ■ | ■ |
| Millbrae | • | ■ | • | ■ | • | ■ | ■ | • | • | ■ | ■ | ■ | ■ | ■ | ■ | ■ | ■ | ■ | ■ | ■ | ■ | ■ | ■ | ■ | ■ | ■ | ■ | ■ |
| Montara650 | • | ■ | • | ■ | • | ■ | ■ | • | ■ | ■ | ■ | ■ | ■ | ■ | ■ | ■ | ■ | ■ | ■ | ■ | ■ | ■ | ■ | ■ | ■ | ■ | ■ | ■ |
| Sistema Lounge System | • | ■ | • | ■ | ■ | ■ | ■ | ■ | ■ | ■ | ■ | ■ | ■ | ■ | ■ | ■ | ■ | ■ | ■ | ■ | ■ | ■ | ■ | ■ | ■ | ■ | ■ | ■ |
| SW_1 | • | • | • | • | • | • | • | • | • | • | • | • | • | • | • | • | • | • | • | • | • | • | • | • | • | • | • | • |
| Switch | • | • | • | • | • | • | • | • | • | • | • | • | • | • | • | • | • | • | • | • | • | • | • | • | • | • | • | • |
| Visalia | • | ■ | • | ■ | • | ■ | ■ | • | ■ | ■ | ■ | ■ | ■ | ■ | ■ | ■ | ■ | ■ | ■ | ■ | ■ | ■ | ■ | ■ | ■ | ■ | ■ | ■ |
| Wrapp | • | • | • | • | • | • | • | • | • | • | • | • | • | • | • | • | • | • | • | • | • | • | • | • | • | • | • | • |
| Bob | • | ■ | • | ■ | ■ | ■ | ■ | ■ | ■ | ■ | ■ | ■ | ■ | ■ | ■ | ■ | ■ | ■ | ■ | ■ | ■ | ■ | ■ | ■ | ■ | ■ | ■ | ■ |
| Circa | • | ■ | ■ | ■ | ■ | ■ | ■ | ■ | ■ | ■ | ■ | ■ | ■ | ■ | ■ | ■ | ■ | ■ | ■ | ■ | ■ | ■ | ■ | ■ | ■ | ■ | ■ | ■ |
| Enea Lottus | • | • | ■ | • | ■ | ■ | ■ | • | ■ | ■ | ■ | ■ | ■ | ■ | ■ | ■ | ■ | ■ | ■ | ■ | ■ | ■ | ■ | ■ | ■ | ■ | ■ | ■ |
| Lagunitas | • | ■ | ■ | ■ | ■ | ■ | ■ | ■ | ■ | ■ | ■ | ■ | ■ | ■ | ■ | ■ | ■ | ■ | ■ | ■ | ■ | ■ | ■ | ■ | ■ | ■ | ■ | ■ |
| Millbrae | • | ■ | • | ■ | • | ■ | ■ | • | • | ■ | ■ | ■ | ■ | ■ | ■ | ■ | ■ | ■ | ■ | ■ | ■ | ■ | ■ | ■ | ■ | ■ | ■ | ■ |
| Montara650 | • | ■ | • | ■ | • | ■ | ■ | • | ■ | ■ | ■ | ■ | ■ | ■ | ■ | ■ | ■ | ■ | ■ | ■ | ■ | ■ | ■ | ■ | ■ | ■ | ■ | ■ |
| Switch | • | • | • | • | • | • | • | • | • | • | • | • | • | • | • | • | • | • | • | • | • | • | • | • | • | • | • | • |
| SW_1 | • | • | • | • | • | • | • | • | • | • | • | • | • | • | • | • | • | • | • | • | • | • | • | • | • | • | • | • |

Metal/Paints Matrix

Legend

- = Not available
- = Available
- ▶ See specification pages for details.

| | Coalesse Metals | | | | | | | | | | Custom Paint | | Steelcase Paint | |
|--------------------------|------------------------------|------------------------|-------------|--------------------------------|------------------------------|---------------------|-----------------------|-------------------|-------------|-----------------------|---------------------------|---------------|-----------------|--|
| | 8040 Aluminum Matte Polished | 8046 Polished Aluminum | 9201 Chrome | 9207 Polished Trivalent Chrome | 9208 Etched Trivalent Chrome | 9238 Brushed Nickel | 9251 Brushed Aluminum | 9260 Black Chrome | 9261 Copper | Potrero415 Exclusives | PerfectMatch Custom Color | Accent Paints | Lux Coatings* | |
| Seating | | | | | | | | | | | | | | |
| Bindu Conference | • | ■ | • | • | • | • | • | • | • | • | • | • | • | |
| Bindu Guest | • | • | • | • | • | • | • | • | • | • | • | • | • | |
| Bob | ■ | • | • | • | • | • | • | • | • | • | ■ | ■ | • | |
| Capa | • | • | • | ■ | ■ | • | • | • | • | • | • | • | • | |
| Chord | • | ■ | • | • | • | • | • | • | • | • | • | • | • | |
| Circa | • | • | • | • | • | • | • | • | • | • | ■ | ■ | ■ | |
| Coalesse Ensemble | • | • | • | • | • | • | • | • | • | • | ■ | ■ | ■ | |
| Coupe | • | • | • | • | • | • | • | • | • | • | • | • | • | |
| Enea | • | • | • | • | • | • | • | • | • | • | • | • | • | |
| Enea Café Wood Stool | • | • | ■ | • | • | • | • | • | • | • | ■ | ■ | ■ | |
| Enea Lottus | • | • | • | • | • | • | • | • | • | • | ■ | ■ | ■ | |
| Lagunitas | • | • | • | • | • | • | • | • | • | • | • | • | • | |
| LessThanFive | • | • | • | • | • | • | • | • | • | • | • | • | • | |
| LessThanFive Essential | • | • | • | • | • | • | • | • | • | • | • | • | • | |
| Lox Chair | • | ■ | • | • | • | • | • | • | • | • | • | • | • | |
| Marien152 | • | • | ■ | • | • | • | • | • | • | • | ■ | ■ | ■ | |
| Massaud Conference | ■ | • | • | • | • | • | • | • | • | • | ■ | ■ | ■ | |
| Massaud Lounge | • | • | • | • | • | • | • | • | • | • | ■ | ■ | ■ | |
| Millbrae | • | • | • | • | • | • | • | • | • | • | ■ | ■ | ■ | |
| Montara650 | • | • | ■ | • | • | • | • | • | • | • | ■ | ■ | ■ | |
| Sistema Lounge System | • | • | • | • | • | • | • | • | • | • | ■ | ■ | ■ | |
| SW_1 | ■ | • | • | • | • | • | • | • | • | • | • | • | • | |
| Switch | • | • | • | ■ | ■ | • | • | • | • | • | • | • | • | |
| Visalia | • | • | • | • | • | • | • | • | • | • | ■ | ■ | ■ | |
| Wrapp | • | • | • | ■ | • | • | • | • | • | • | • | • | • | |
| Occasional Tables | | | | | | | | | | | | | | |
| Bob | ■ | • | • | • | • | • | • | • | • | • | ■ | ■ | ■ | |
| Circa | • | • | • | • | • | • | • | • | • | • | • | • | • | |
| Enea Lottus | • | • | • | • | • | • | • | • | • | • | ■ | ■ | ■ | |
| Lagunitas | • | • | • | • | • | • | • | • | • | • | ■ | ■ | ■ | |
| Millbrae | • | • | • | • | • | • | • | • | • | • | ■ | ■ | ■ | |
| Montara650 | • | • | • | • | • | • | • | • | • | • | ■ | ■ | ■ | |
| Switch | • | • | • | ■ | ■ | • | • | • | • | • | • | • | • | |
| SW_1 | ■ | • | • | • | • | • | • | • | • | • | • | • | • | |

* Lux Coatings are not available on Montara650 54" or 60" round work-height tables.

Metal/Paints Matrix *continued*

Legend

- = Not available
- = Available
- ▶ See specification pages for details.

Tables and Casegoods

| | Coalesse Standard Paint—Neutrals | | | | | | | | | | | | | | Coalesse Standard Paint—Colors | | | | | | | | Product Line Exclusives | | | | | |
|--------------------------|----------------------------------|---------------------|-------------------------|---------------------|---------------------|------------------|-----------------|----------------------|----------------------|---------------------------|---------------------|---------------------------|-----------------|----------------------|--------------------------------|--------------------------|------------------------|---------------------|-------------------|---------------------|---------------------|-----------------------|-------------------------|---------------------------------|---|-------------------------|-----------------------------------|---------------------------------|
| | 4135 Black Matte | 4138 Graphite Gloss | 4140 Arctic White Gloss | 4141 Platinum Matte | 4142 Platinum Gloss | 4144 Black Gloss | 4145 Milk Gloss | 4146 Champagne Matte | 4147 Champagne Gloss | 4148 Midnight Brown Gloss | 4180 Graphite Matte | 4193 Midnight Brown Matte | 4242 Milk Matte | 4710 Low Gloss Black | 7196 Midnight Brown Textured | 7197 Anthracite Textured | 4065 Blue Ink Textured | 4066 Ocean Textured | 4067 Ice Textured | 4068 Olive Textured | 4069 Honey Textured | 4070 Currant Textured | 4071 Saffron Textured | LessThanFive Exclusive Finishes | LessThanFive Essential Exclusive Finishes | Enea Exclusive Finishes | Enea Café Wood Exclusive Finishes | MoreThanFive Exclusive Finishes |
| Ballet | • | ■ | ■ | ■ | ■ | ■ | ■ | ■ | ■ | ■ | • | • | • | • | ■ | ■ | • | • | • | • | • | • | • | • | • | • | • | • |
| Bob | • | ■ | • | ■ | ■ | ■ | ■ | ■ | ■ | ■ | ■ | ■ | ■ | ■ | ■ | ■ | ■ | ■ | ■ | ■ | ■ | ■ | ■ | ■ | ■ | ■ | ■ | ■ |
| CG_1 | • | • | • | ■ | • | • | • | • | • | ■ | ■ | ■ | ■ | ■ | • | • | • | • | • | • | • | • | • | • | • | • | • | • |
| E-Table 2 | • | ■ | ■ | ■ | ■ | ■ | ■ | ■ | ■ | ■ | • | • | • | ■ | ■ | ■ | • | • | • | • | • | • | • | • | • | • | • | • |
| Enea Lottus | • | • | ■ | • | ■ | ■ | ■ | • | ■ | • | • | • | • | • | • | • | ■ | ■ | ■ | ■ | ■ | ■ | ■ | • | • | • | • | ■ |
| Exponents | ■ | • | • | ■ | • | • | • | • | • | • | • | • | • | • | • | • | • | • | • | • | • | • | • | • | • | • | • | • |
| Exponents Mobile Display | ■ | • | • | • | • | • | ■ | • | • | • | • | • | • | • | • | • | • | • | • | • | • | • | • | • | • | • | • | • |
| Lagunitas | • | ■ | ■ | ■ | ■ | ■ | ■ | ■ | ■ | ■ | ■ | ■ | ■ | ■ | ■ | ■ | ■ | ■ | ■ | ■ | ■ | ■ | ■ | ■ | ■ | ■ | ■ | ■ |
| Lagunitas Focus Nook | • | • | • | • | • | • | • | • | • | ■ | • | ■ | ■ | ■ | • | • | • | • | • | • | • | • | • | • | • | • | • | • |
| Millbrae | • | ■ | • | ■ | • | ■ | ■ | • | ■ | ■ | ■ | ■ | ■ | ■ | ■ | ■ | ■ | ■ | ■ | ■ | ■ | ■ | ■ | ■ | ■ | ■ | ■ | ■ |
| Montara650* | • | ■ | • | • | • | ■ | ■ | • | ■ | • | • | ■ | ■ | • | • | • | ■ | ■ | ■ | ■ | ■ | ■ | ■ | ■ | ■ | ■ | ■ | ■ |
| MoreThanFive | • | • | • | • | • | • | • | • | • | • | • | • | • | • | • | • | • | • | • | • | • | • | • | • | • | • | • | ■ |
| Potrero415 | • | ■ | • | • | ■ | ■ | ■ | • | ■ | ■ | ■ | ■ | ■ | ■ | ■ | ■ | ■ | ■ | ■ | ■ | ■ | ■ | ■ | ■ | ■ | ■ | ■ | ■ |
| Potrero415 Light | • | ■ | • | • | ■ | ■ | ■ | • | ■ | ■ | ■ | ■ | ■ | ■ | ■ | ■ | ■ | ■ | ■ | ■ | ■ | ■ | ■ | ■ | ■ | ■ | ■ | ■ |
| SW_1 | • | • | • | • | • | • | • | • | • | • | • | • | • | • | • | • | • | • | • | • | • | • | • | • | • | • | • | • |
| Train | • | ■ | ■ | ■ | ■ | ■ | ■ | ■ | ■ | ■ | ■ | ■ | ■ | ■ | ■ | ■ | ■ | ■ | ■ | ■ | ■ | ■ | ■ | ■ | ■ | ■ | ■ | ■ |

*Lux Coatings, Steelcase accent paints, and PerfectMatch Custom Color are not available on 54" or 60" round tables.

Metal/Paints Matrix

Legend

- = Not available
- = Available
- ▶ See specification pages for details.

| Tables and Casegoods | Coalesse Metals | | | | | | | | | | | Custom Paint | Steelcase Paint | Lux Coatings | |
|--------------------------|------------------------------|------------------------|-------------|--------------------------------|------------------------------|---------------------|-----------------------|-------------------|-------------|-----------------------|---------------------------|---------------|-----------------|--------------|---|
| | 8040 Aluminum Matte Polished | 8046 Polished Aluminum | 9201 Chrome | 9207 Polished Trivalent Chrome | 9208 Etched Trivalent Chrome | 9238 Brushed Nickel | 9251 Brushed Aluminum | 9260 Black Chrome | 9261 Copper | Potrero415 Exclusives | PerfectMatch Custom Color | Accent Paints | Lux Coatings | | |
| Ballet | • | • | • | • | • | • | • | • | • | • | • | • | • | • | • |
| Bob | ■ | • | • | • | • | • | • | • | • | • | ■ | ■ | ■ | ■ | ■ |
| CG_1 | • | • | • | • | • | • | • | • | • | • | • | • | • | ■ | • |
| E-Table 2 | • | • | • | • | • | • | • | • | • | • | • | • | • | • | • |
| Enea Lottus | • | • | • | • | • | • | • | • | • | • | ■ | ■ | ■ | ■ | ■ |
| Exponents | • | • | • | • | • | • | • | • | • | • | • | • | • | • | • |
| Exponents Mobile Display | • | • | • | • | • | • | • | • | • | • | • | • | • | • | • |
| Lagunitas | • | • | • | • | • | • | • | • | • | • | • | • | ■ | ■ | ■ |
| Lagunitas Focus Nook | • | • | • | • | • | • | • | • | • | • | • | • | • | • | • |
| Millbrae | • | • | • | • | • | • | • | • | • | • | • | • | • | ■ | ■ |
| Montara650* | • | • | • | • | • | • | • | • | • | • | ■ | ■ | ■ | ■ | ■ |
| Potrero415 | • | ■ | ■ | • | • | • | • | ■ | ■ | ■ | ■ | ■ | ■ | ■ | ■ |
| Potrero415 Light | • | ■ | ■ | • | • | • | • | ■ | ■ | ■ | ■ | ■ | ■ | ■ | ■ |
| SW_1 | ■ | • | • | • | • | • | • | • | • | • | • | • | • | • | • |
| Train | • | • | • | • | • | • | • | • | • | • | • | • | • | • | • |

*Lux Coatings, Steelcase accent paints, and PerfectMatch Custom Color are not available on 54" or 60" round tables.

Metal/Paints Outdoor Finishes

Legend

- = Not available
- = Available
- ▶ See specification pages for details.

| | 4251 EMU Brown | 4257 Antique Iron | 7234 EMU Black | 7271 EMU White | 7294 EMU Grey/Green | 7296 EMU Taupe | 7321 Cement | 7389 Curry Yellow | 7395 Marine Blue | 7396 Military Green | 7397 Maple Red |
|------------------------------|----------------|-------------------|----------------|----------------|---------------------|----------------|-------------|-------------------|------------------|---------------------|----------------|
| CO2465 Round Armless Chair | ■ | ■ | ■ | ■ | ■ | ■ | ■ | ■ | ■ | ■ | ■ |
| CO2466 Round Arm Chair | ■ | ■ | ■ | ■ | ■ | ■ | ■ | ■ | ■ | ■ | ■ |
| CO2467 Round Stool | ■ | ■ | ■ | ■ | ■ | ■ | ■ | ■ | ■ | ■ | ■ |
| CO2470 Round Round Table | ■ | ■ | ■ | ■ | ■ | ■ | ■ | ■ | ■ | ■ | ■ |
| CO2473 Round Square Table | ■ | ■ | ■ | ■ | ■ | ■ | ■ | ■ | ■ | ■ | ■ |
| CO2475 Round Counter Table | ■ | ■ | ■ | ■ | ■ | ■ | ■ | ■ | ■ | ■ | ■ |
| EMU726 Terramare Smart Table | ■ | • | ■ | ■ | ■ | • | ■ | • | • | • | • |

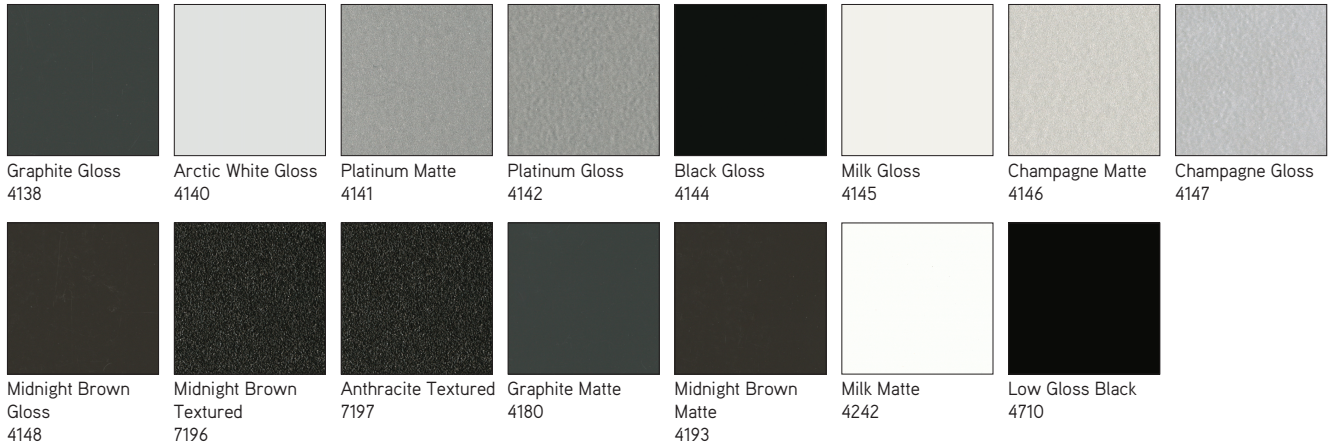
Coalesse

Metal/Paints Outdoor Finishes

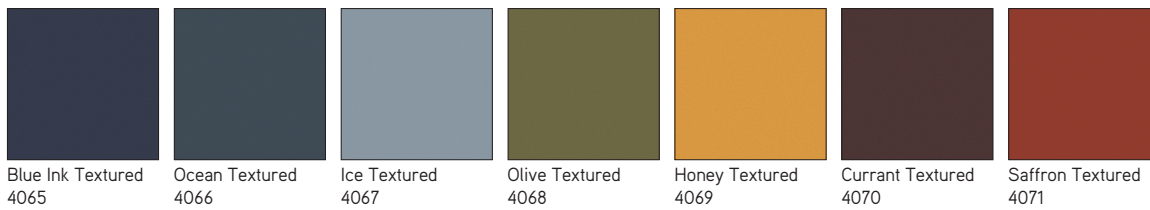
Metal/Paints Palette

► See *Metal/Paints Matrix* for availability by product list, page 62.

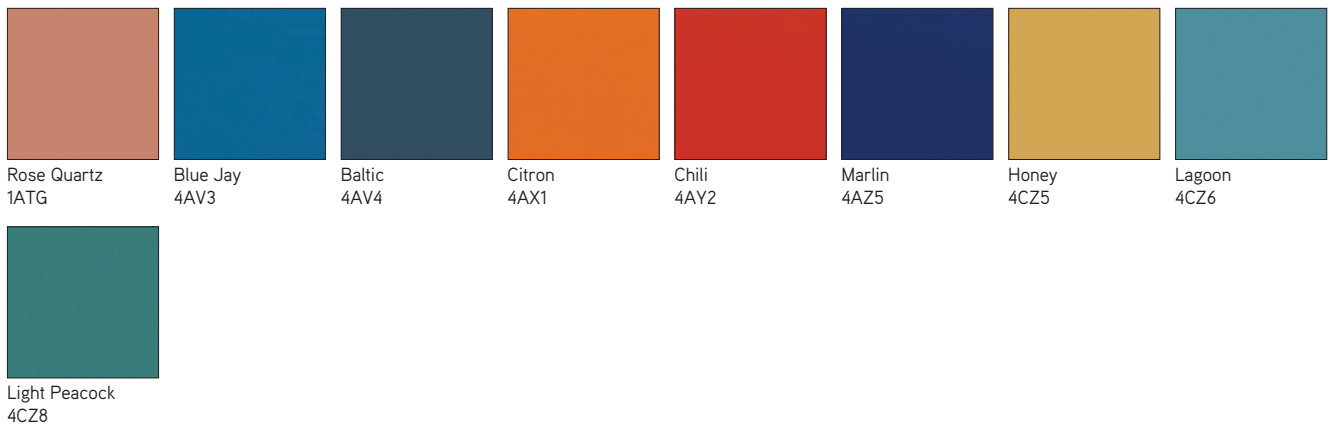
Coalesse Standard Powder Coat Paint—Neutral



Coalesse Standard Powder Coat Paint—Color



Steelcase Accent Paints



Metal/Paints Palette

Steelcase Lux Coatings



Obsidian
4B20

Matte Brass
4B22

Burnished Bronze
4B23

Night Bronze
4B24

Matte Copper
4B25

Smoked Mica
4B26

Cast Iron
4B29

Enea Paint



White Gloss
4016

Black Gloss
4017

Silver Metallic
4018

Enea Café Wood Stool Paint (available on seat casting only)

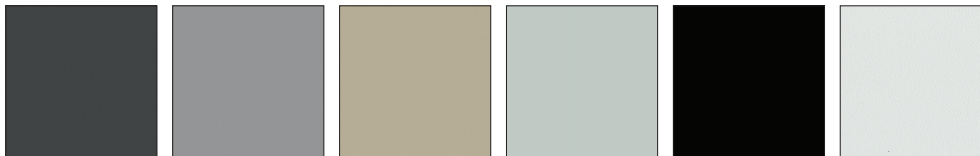


Anthracite Grey
Textured
4062

Black
7207

Arctic White
7241

Enea Lottus Exclusive Paint Finishes



Anthracite Grey
Textured
4062

Cool Grey Textured
4063

Sand Textured
4064

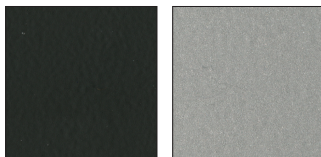
Platinum Silver
4218

Black
Textured
7207

Arctic White
Textured
7241

**Not available on Enea Lottus Tables.*

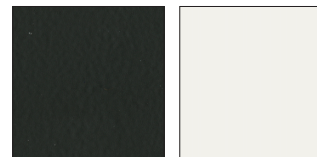
Exponents Paint Colors



Black Matte
4135

Platinum Matte
4141

Exponents Mobile Display Paint Colors



Black Matte
4135

Milk Gloss
4145

Metal/Paints Palette *continued*

► See *Metal/Paints Matrix* for availability by product list, page 62.

Potrero415 and Potrero415 Light Metal Leg Ring Color



Chrome
9201

Black Chrome
9260

Copper
9261

Outdoor Finishes



EMU Brown
4251

EMU Antique Iron
4257

EMU Black
7234

EMU White
7271

EMU Grey/Green
7294

EMU Taupe
7296

EMU Cement
7321

EMU Curry Yellow
7389

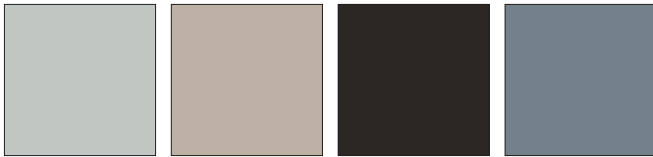


EMU Marine Blue
7395

EMU Military Green
7396

EMU Maple Red
7397

LessThanFive Essential Series Smooth Paint



Cloud Matte
4283

Sand Matte
4284

Black Matte
4285

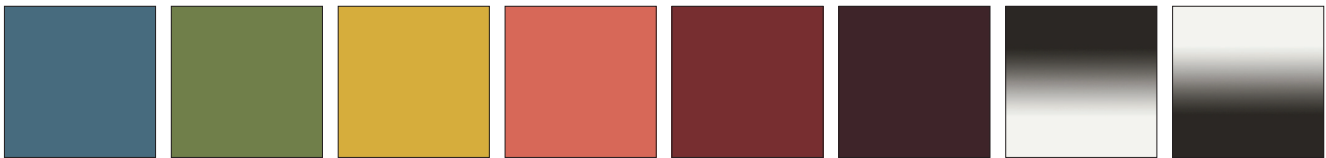
Ice Matte
4286

MoreThanFive Exclusive Paint Finishes



Black Textured
7207

LessThanFive Smooth Paint



Slate Blue Matte
4287

Fern Matte
4288

Lemongrass Matte
4289

Coral Matte
4290

Poppy Matte
4291

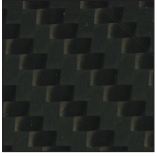
Currant Matte
4292

Black Fade Matte
4293

White Fade Matte
4294

Metal/Paints Palette

LessThanFive Woven Carbon Fiber



Carbon Weave
4233*

**4233 Carbon Weave has a clear coat finish over woven carbon fiber.*

Miscellaneous

Convex Vinyl Edge Band

Applies to:

- E-Table vinyl
- 6000 Black
- 6607 Woodrose **E**
- 6609 Smoke **E**
- 6655 Warm White
- 66WU Clay
- 66WV Chalk

Plastic

Applies to:

- Enea
- 003 White
- 0015 Sand
- 0017 Cool Grey
- 0400 Black
- 0405 Periwinkle
- 0406 Alabaster
- 0414 Anthracite Grey

Applies to:

- Enea Altoz943, Enea café wood and Enea Lottus
- 003 White
- 0015 Sand
- 0017 Cool Grey
- 0400 Black
- 0409 Red
- 0414 Anthracite Grey
- 0421 Blue
- 0422 Blue Ink
- 0423 Ocean
- 0424 Ice
- 0425 Olive
- 0426 Honey
- 0427 Currant
- 0428 Saffron

Tip: Not all colors available on all products. Consult the Enea plastic matrix for product line availability.

Applies to:

- Enea café wood stool shell
- 003 White
- 0017 Cool Grey
- 0400 Black
- 0414 Anthracite Grey

Applies to:

- Exponents mobile display casters
- 6000 Black
- 6009 Arctic White

Applies to:

- Lox chairs
- 6345 Black
- 6346 White
- 6349 Greige

Applies to:

- SW_1 grommet, barrier, wire manager, sub-structure, and lounge tablet
- Sebastopol grommet
- Sistema lounge system box table cylinder
- Potrero415 and Potrero415 Light PowerPod grommet, substructure for glass and solid surface tops
- 6000 Black
- 6052 Milk

Applies to:

- Lagunitas focus nook light grommet and Potrero415 Light power modules
- 6000 Black
- 6052 Milk
- 6D03 Graphite

Applies to:

- Grommet, spheres, flex-gangers, Mini-Port, Interport, casters, horizontal wire manager, and vertical wire manager
- Black plastic

TAP Power Module Door Finishes**Brushed Anodized Aluminum**

Applies to:

- Host
- 8044 Black
- 8047 Silver

Utility Bay

Applies to:

- E-Table 2
- 4137 Matte Black
- 4745 Nickel Mica
- 4746 Silver Mica
- 4747 Charcoal Mica

Glass Doors

Applies to:

- Host credenzas
- Frosted glass

Locks

Applies to:

- Exponents
- 9211 Nickel
- 9250 Ember Chrome

Interior and Plinth

Applies to:

- Host credenzas
- Black Melamine

Solid

Applies to:

- CG_1, Exponents, Potrero415, and SW_1 tables
- 2801 Glacier White

Applies to:

- CG_1 leg inserts
- 2010 Black
- 2011 Midnight Black
- 2801 Glacier White

Grommet

Applies to:

- Exponents
- 4135 Black Matte
- 4141 Platinum Black

Power, Voice Data Modules

Applies to:

- Exponents
- 4140 Arctic White Gloss
- 4141 Black Gloss

Soft Surface Worksurface

Applies to:

- Free Stand
- 4433 Black

Glossy Laminate

Applies to:

- Sebastopol
- 2001 Smoky White Glossy
- 2002 Studio Gray Glossy
- 2003 Wrought Iron Glossy
- 2004 Black Pearl Glossy
- 2005 Liberty Red Glossy

Power Module Finishes**Brushed Anodized Aluminum**

Applies to:

- Potrero415
- 8044 Black
- 8047 Silver

Braided Cotton Power Cord

Applies to:

- MoreThanFive
- 9005 White
- 9006 Chili
- 9007 Sterling
- 9008 Honey
- 9009 Black
- 9011 Seagull
- 9014 Black/White Stripe
- 9015 White/Seagull Stripe
- 9018 Seagull/Chili Stripe
- 9019 Seagull/Honey Stripe
- 9020 Seagull/Sterling Stripe
- 9021 Seagull/White Stripe

E = Excluded

Enea and Enea Lottus Plastic Matrix

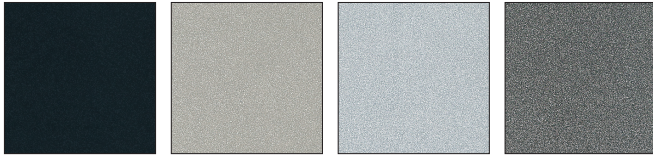
Legend

- = Not available
- = Available
- ▶ See specification pages for details.

| | 003 White | 0013 Sunset Orange | 0014 Clover Green | 0015 Sand | 0016 Walnut Brown | 0017 Cool Grey | 0400 Black | 0405 Periwinkle | 0406 Alabaster | 0409 Red | 0414 Anthracite Grey | 0421 Blue | 0422 Blue Ink | 0423 Ocean | 0424 Ice | 0425 Olive | 0426 Honey | 0427 Currant | 0428 Saffron |
|------------------------------|-----------|--------------------|-------------------|-----------|-------------------|----------------|------------|-----------------|----------------|----------|----------------------|-----------|---------------|------------|----------|------------|------------|--------------|--------------|
| Enea Shell | ■ | ■ | ■ | ■ | ■ | ■ | ■ | ■ | ■ | ■ | ■ | ■ | • | • | • | • | • | • | • |
| Enea Lottus Shell and Insert | ■ | • | • | ■ | ■ | ■ | ■ | • | • | • | ■ | • | ■ | ■ | ■ | ■ | ■ | ■ | ■ |
| Enea Café Wood Stool Seat | ■ | • | • | • | • | ■ | • | • | • | • | ■ | • | ■ | ■ | ■ | ■ | ■ | ■ | ■ |
| Enea Altzo943 Shell | ■ | • | • | ■ | • | ■ | ■ | • | • | • | ■ | • | ■ | ■ | ■ | ■ | ■ | ■ | ■ |

Plastic and Miscellaneous Palette

E-Table Utility Bay



Matte Black
4137

Nickel Mica
4745

Silver Mica
4746

Charcoal Mica
4747

CG_1 - Solid Surface colors for the leg insert



Black
2010

Midnight Brown
2011

Glacier White
2801

Enea Plastic



White Gloss
003

Sunset Orange
0013

Clover Green
0014

Sand
0015

Walnut Brown
0016

Cool Grey
0017

Black
0400

Periwinkle
0405



Alabaster
0406

Red
0409

Anthracite Grey
0414

Blue
0421

Plastic and Miscellaneous Palette

► See *Enea and Enea Lottus Plastic Matrix* for availability by product list, page 73.

Enea Alto943, Enea Cafe Wood and Enea Lottus Plastic

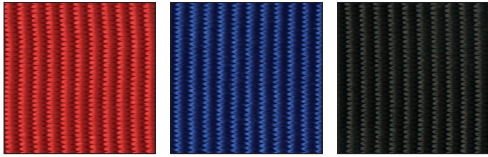


**Available on Enea Lottus only.*

Tip: Not all colors available on all products. Consult the Enea plastic matrix for product line availability

Plastic and Miscellaneous Palette *continued*

Hosu – Ottoman Pull Tab

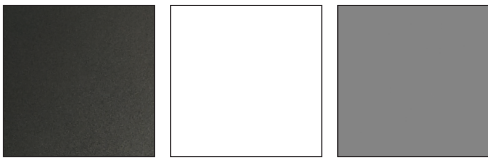


Red
CL40

Blue
CL41

Black
CL42

Lox Chair Plastic



Black
6345

White
6346

Greige
6349

Sebastopol - Glossy laminate colors for interior surface



Smoky White
Glossy
2001

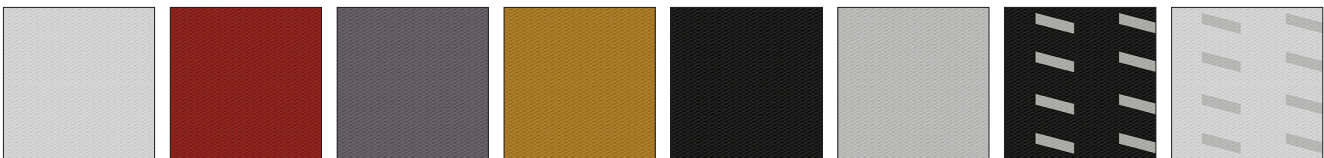
Studio Gray
Glossy
2002

Wrought Iron
Glossy
2003

Black Pearl
Glossy
2004

Liberty Red
Glossy
2005

MoreThanFive - Braided Cotton Power Cord



White
9005

Chili
9006

Sterling
9007

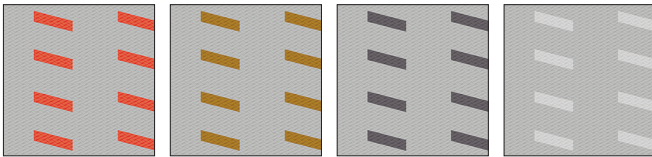
Honey
9008

Black
9009

Seagull
9011

Black/White
Stripe
9014

White/Seagull
Stripe
9015



Seagull/Chili
Stripe
9018

Seagull/Honey
Stripe
9019

Seagull/Sterling
Stripe
9020

Seagull/White
Stripe
9021

Exponents, Potrero415, Potrero415 Light, Sistema, and SW_1 Exclusives

Potrero415 and Potrero415 Light PowerPod Grommet and Sub-structure, Sistema Lounge System Box Table Cylinder, Grommet, Barrier, Wire Manager, Sub-structure, and Sebastopol Grommet



Black
6000

Milk
6052

Bob, Exponents, Potrero415, Potrero415 Light, and SW_1 Solid Exclusive



Glacier White
Solid Surface
2801

Lagunitas Focus Nook Light Grommet and Potrero415 Light Power Modules



Black
6000

Milk
6052

Granite
6D03

Care and Maintenance

Chrome

Use commercial cleanser and polish, according to manufacturer's directions.

Fabric

Under normal use, clean with soft cloth dampened with water. For spots and spills, we recommend professional cleaning. For COM, refer to the specific cleaning instructions recommended by the fabric supplier.

SW_1 Knit:

Clean with warm water and soap. Wet sponge and wipe fabric. Household cleaners such as Windex may be used. Do NOT use cleaners containing bleach.

Laminate and solid phenolic should be cleaned with soap and water. For stubborn stains, use a non-abrasive household cleaner.

Cleaning Laminate

Markerboard Surface

Use dry erase markers only. Remove dry-erase markings with a markerboard eraser or soft cloth as often as possible. Change erasers, as they become dirty. Dirty erasers will leave ink residue on the surface.

For daily cleaning, or as needed, use a dry erase cleaner, or a non-abrasive household cleaner, such as glass cleaner. This may be done with a soft cloth or sponge. Dry the surface with a soft cloth prior to writing. All markings should be removed weekly.

Caution:

- Do not use permanent markers on markerboard surfaces. In the event a permanent marker is used, removal of markings may be attempted by using dry erase cleaner, or by writing over the marking with a dry erase marker and erasing with a markerboard eraser or soft cloth.
- Do not use abrasive cleaners or solvent type cleaning solutions, such as Ketones (Acetone, MEK, etc.) lacquer thinner, nail polish remover, etc. because they may remove the finish from the markerboard surface.

Cleaning e³ CeramicSteel Markerboard Surface

- Wipe board with a clean cloth moistened by a liquid markerboard cleaner or a solution of 50% water and 50% isopropyl alcohol.
- Rinse with clear water.
- Wipe dry with a clean cloth. If your board is used daily, the cleaning should be performed at least 2-3 times a week.

More thorough cleaning may be required if writing is left on the board for more than two days.

Markers

Use any high-quality dry erase marker.

CAUTION! The use of Low Odor markers may cause ghosting to occur. If Low Odor markers have been used, the surface can be completely cleaned by following the cleaning instructions above. Remember to discard eraser if used with Low Odor markers.

Removing Permanent Marker

- Option 1:
- Write over the top of the permanent marker ink with a dry-erase marker
 - Simply erase

Option 2:

- Moisten a clean, dry cloth with isopropyl alcohol
- Wipe the board in a circular motion to loosen marker residue
- Rinse with clear water
- Dry the board with a clean cloth
- Repeat these steps as necessary

Installer's Instructions for Initial Cleaning at Time of Installation

NOTE: These initial cleaning instructions are shipped with every board.

- For initial cleaning, wipe your board with a clean cloth moistened by a mild, alcohol-based cleaner.
- Rinse with clear water. This step is simple, but very important.
- Wipe dry with a clean cloth.

Leather

Under normal use, regular dusting and vacuum cleaning are all that is necessary. For spots and spills, wipe excess liquid immediately. If necessary, use lukewarm water cleaning the entire area where spot occurred and air dry. For stubborn spots or stains, use a solution of mild non-detergent soap and air dry. For butter, oil, or grease, wipe excess with dry cloth and then leave alone. The spot will dissipate into the leather. Do not apply water.

Faux Leather

Under normal use, clean with soft cloth dampened with water. For spots and stains, use the recommended mixture of Woolite and water. Rinse with clean water and air dry.

Granite/Glass

Under normal use, clean with Windex and soft cotton cloth.

Powder coat finishes on chairs and table bases

should be cleaned with a liquid detergent and water. Remove stubborn stains with liquid cleanser, such as Formula 409.

Polished Aluminum finishes on table bases and chair arms

should be cleaned with a commercial powder, liquid, or paste metal cleaner and polish. Follow the manufacturer's directions.

Veneers and painted MDF

should be cleaned regularly with mild soap and water and dried with a soft cloth. Tip: Never use ammonia-based cleaners or wax on wood surfaces.

Protecting Wood Surfaces

Use desk pads and coasters to help protect the finish against dents, scratches, moisture and hot and cold liquids. Do not use desk pads that have plastic backing. Use felt or leather pads on the bottoms of office equipment and accessories.

Periodically move desk accessories and other objects kept on the worksurface to ensure even aging.

Lift objects when you move them, instead of pulling or pushing them across the surface, to avoid scratching the surface. Avoid leaving vinyl binders on worksurface for long periods.

If you use a protective glass top, insert felt pads between the glass and the worksurface, to create an air space and allow the wood to breathe.

Keep your furniture away from direct sunlight. Avoid extreme temperatures and humidity. Maintain temperatures between 60 and 80 degrees Fahrenheit and humidity levels between 30 and 50 percent.

Cleaning Wood Surfaces

Keep a supply of soft, clean, absorbent cloths handy for wiping up spills and regular dusting.

To dust, wipe with a slightly damp, soft cloth, using another soft cloth to dry. Always wipe the surface in the direction of the woodgrain.

Use a quality cleaner or flax soap formulated especially for use on wood surfaces. Do not use oils or ammonia. Dilute the cleaner as directed by the manufacturer. Dampen but do not saturate a soft cloth with the diluted cleaning solution. Wipe the surface in the direction of the woodgrain to remove dirt and fingerprints. Wipe the surface clean with a soft, dry cloth.

Care and Maintenance

For LessThanFive Chair

Finishes:

- To clean a chair, start with water and a soft cloth, like microfiber (do not use abrasive cleaners or materials like paper towel)
- If water does not clean the chair, use a common solution, like Formula 409 or window cleaner, with a soft cloth
- For removal of indigo from denim, use isopropyl alcohol (rubbing alcohol) with a soft cloth
- To remove small scratches on the high gloss Carbon Weave chair, only wax-based paste, like SC Johnson Paste Wax or Trewax Clear Paste Wax, can be used. Waxing is not recommended for matte chairs, as this will change the matte finish of the chair.

For Fusion Fabric:

Following these guidelines will help to extend the life of the fabric:

- Clean regularly with soap and water
- Wipe up spills as soon as they occur
- Use alcohol based cleaners, such as Fantastik® and Formula 409®
- Sanitize using disinfectants such as: bleach (20%) water solution, hydrogen peroxide based, or quaternary based
- For stubborn stains, wipe the stain off with isopropyl alcohol (rubbing alcohol) as soon as possible
- Thoroughly rinse all solution residue with clean water
- Air dry

For Free Stand:

- Clean the aluminum frame and worksurface frequently by applying a household cleaner (such as Formula 409 or Green Works®), and wiping dry with a clean, soft cloth.
- Avoid using Clorox disinfecting wipes, hand sanitizer, Mr. Clean Magic Erasers, or ethyl alcohol, as these can lead to severe staining, discoloration, or peeling of paint.
- Exercise caution with the worksurface in proximity to sharp objects and when setting a unit down on an abrasive surface, such as pavement or concrete. Contact with sharp objects or abrasive surfaces can cause scuffing and scratching of the work surface.

Trademark List

™/® The following is a non-exhaustive list of trademarks and registered trademarks for products of Steelcase Inc. or one of its related corporate entities: Agree, Airtouch, Aisla, Alight, Amia, Answer, Apprise, Aspekt, Avenir, Await, B-Free, Ballet, Bassline, Bindu, Bivi, Bix, Bottomline, Brody, Buoy, Cachet, Campfire, Capa, CF Series, CG_1, Chord, Circa, Clipper, Cobi, Collaboration, Convene, Coupe, Cura, Currency, dash, Divisio, Duo, E-Table 2, Edge Series, Elbrook, Elective Elements, Embold, Empath, Everwall, Exponents, Folio, FrameOne, Gesture, Groupwork, Host, Hosu, i2i, Jenny, Kart, Kathryn, Kick, Lagunitas, Leap, Leela, LessThanFive, LiveBack, LiveSeat, Mackinac, Marien152, Max-Stacker, media:scape, Migration, Millbrae, Mineral, Mitra, Montage, Montara650, MoreThanFive, Move, Node, Ocular, Ology, Opus, Paperflo, Passerelle, Player, Pocket, Potrero415, QiVi, Radia, Regard, Relay, Reply, Ripple, Roam, Sarto, Scoop, Sebastopol, Senti Series, Senza, Shortcut, Sidewalk, Siento, Sieste, SILQ, Soffio, Sorrel, SOTO, Steelcase Eclipse, Steelcase Flex, Steelcase Karman, Steelcase Relay, Steelcase Rise, Steelcase Series, Surround, SW_1, Switch, Sync, Tava, Tenor, Think, Thoughtful, Thread, Together, Train, Trees, Turnstone, Umami, Underscore, V.I.A., Verb, Verge, Verlay, Victor2, Visalia, WorkValet, and X-tenz.

™/® The following are trademarks or registered trademarks of AMQ Solutions, LLC: 3F, Activ, Amobi, Bixby, Bodi, Cluvo, Concur, Embank, FL-X, Iline, Jaku, Kinex, Personality Plus, Revi, S-Series, Siya, Tektis, Tizu, Uptake, and Zilo.

™/® The following are trademarks or registered trademarks of Orangebox Ltd., Cardiff, UK: Air3, Aspect, Avi, Away from the Desk, Border, Campers & Dens, Coppice, Cubb, Kirm, On the QT, Ramsey, Skomer, Sully, Track-B, and Vale.

™/® The following are trademarks or registered trademarks of Viccarbe Habitat, S.L.: Aleta, Cambio, Designed in The Sun, Foro, Funda, Holy Day, Kelly, Last Minute, Noha, Savina, Sistema, Sistema, Viable, and Wrapp.

® The following are registered brands of Steelcase Inc. and its family of companies: Steelcase, AMQ, Coalesse, Designtex, Halcon, Orangebox, Smith System, and Viccarbe.

® The following registered trademarks are under license from AWI Licensing Company, Dover, DE: SoundScapes, DuraBrite, BioBlock, and Armstrong.

® The following registered trademarks are under license from Byrne Electrical, Rockford, MI: Interport, Mini-Port, Axil Z, and Ellora.

® The following is a registered trademark of DuPont, Wilmington, DE: Corian.

® The following is a registered trademark of Genlyte Thomas Company, Louisville, KY: Lightolier.

® The following is a registered trademark of Hilti Corporation, FL-9494 Schaan, Principality of Liechtenstein: Hilti.

® The following is a registered trademark of Leviton Manufacturing Company, Little Neck, NY: Decora.

® The following is a registered trademark of Mechanical Plastics Corp, Elmsford, NY: Toggler.

® The following is a registered trademark of Microsoft Corporation, Redmond, WA: Microsoft.

® The following are registered trademarks of Orangebox Ltd., Cardiff, UK: Orangebox.

® The following is a registered trademark of Panduit Corporation, Lockport, IL: Panduit.

® The following is a registered trademark of Trav (Press), Cuneo, Italy: Assisa.

® The following is a registered trademark of Virtual Ink, Boston, MA: mimioActive.

® The following registered trademarks are under license from Wilkhahn Furniture Products: Avera, Senzo, Versal, and Wilkhahn FS.

® The following are registered trademarks of Polyvision Corp: Flow, Motif, Polyvision, Sans, and Serif.

® The following is a registered trademark of Wilsonart International, Temple, TX: Chemsurf.

® The following is a registered trademark of Wiremold, West Hartford, CT: Wiremold.

® The following is a registered trademark of EMU Group S.P.A., Perugia, Italy: EMU.

® The following is a registered trademark of Security People, Inc.: Digilock.

® The following are registered trademarks of Natural Capital Partners Europe Limited: CarbonNeutral and the CarbonNeutral Certified logo.

™ The following is a trademark of Microsoft Corporation, Redmond, WA: Windows.

™ The following is a trademark of Rodman Industries, Inc., Oconomowoc, WI: ResinCore1.

™ The following is a trademark of Ultrafabrics, LLC, Elmsford, NY: Ultraleather.

™ The following trademarks are under license from Wilkhahn Furniture products: Cana, Linus, Logon, Picto, Range, Stitz, Thema, Timetable, and Tubis.

™ The following trademarks are under license from Walter Knoll: Andoo, Bob, Lazlo, Lox, Ribbon, and Together.

™ The following trademarks are under license from PP Mobler: Bar and Flag Halyard.

™ The following trademarks are under license from Carl Hansen: Elbow, Paddle, Shell, Wing, and Wishbone.

™ The following trademarks are under license from Cambridge Sound Management, LLC Cambridge, MA: QtPro Soundmasking, Qt Quiet Technology, and Sonet Qt.

™ The following is a trademark of Electri-Cable Assemblies, Shelton, CT: Interact.

™ The following is a trademark of Clestra Hauserman: IRYS.

™ The following is a trademark of Wiesner-Hager Möbel GmbH: Nooi.

™ The following are trademarks of Polyvision: Accord, a3, e3, Boundri, and Nota.

™ The following is a trademark of Bostock Company, Inc: SnapCab.

™ The following is a trademark of Williams-Sonoma, Inc: West Elm.

™ The following is a trademark of Elena Marquina Testor: nanimarquina.

™ The following is a trademark of Forbo International SA: Forbo.

Trademarks used herein are the property of Steelcase Inc. or their respective owners.