



# Color Works.

*Palette to Product*

Surface Materials

September 2025

Steelcase®

# Color Works. *Palette to Product*

*Color Works: Palette to Product* is a color application guide that highlights how Color isn't just visual – it's emotional. This guide explores the importance of color and relevant material introductions to meet real needs, featuring spaces for focus, collaboration and transition.

In addition to the guide, there are material callouts within the new & notable card deck and planning ideas available for download.

Links to these touchpoints can be found on the Surface Materials landing page on Steelcase dotcom.



# Color Works.

## *Palette to Product*

### **Color Chapter**

Five color themes.

### **Palette to Product**

1. Color Chapter
2. Palette and Application

### **Display Guide**

How to create a Color Works display to best suite your needs.



# Color Chapters

Introducing five color themes, each designed to evoke emotion, inspire creativity, and guide application across diverse environments. Together, they form a harmonious story grounded in nature, emotion, and design versatility.



**Grounding Neutrals**



**Sunbaked Layers**



**Twilight Tones**



**Rooted In Nature**



**Peaceful Energy**



# Grounding Neutrals

*Warm and soft tones often resemble places of comfort. These neutrals can act as a foundation or be layered together in tone-on-tone combinations.*



## Connected Comfort

Connected Comfort builds on Grounding Neutrals by blending natural woodgrains, rich textiles, and refined accents to create a built-in, welcoming environment. It supports personal storage, casual lounging, and social connection within a small work café setting—balancing comfort, clarity, and a sense of belonging.



## Welcoming Focus

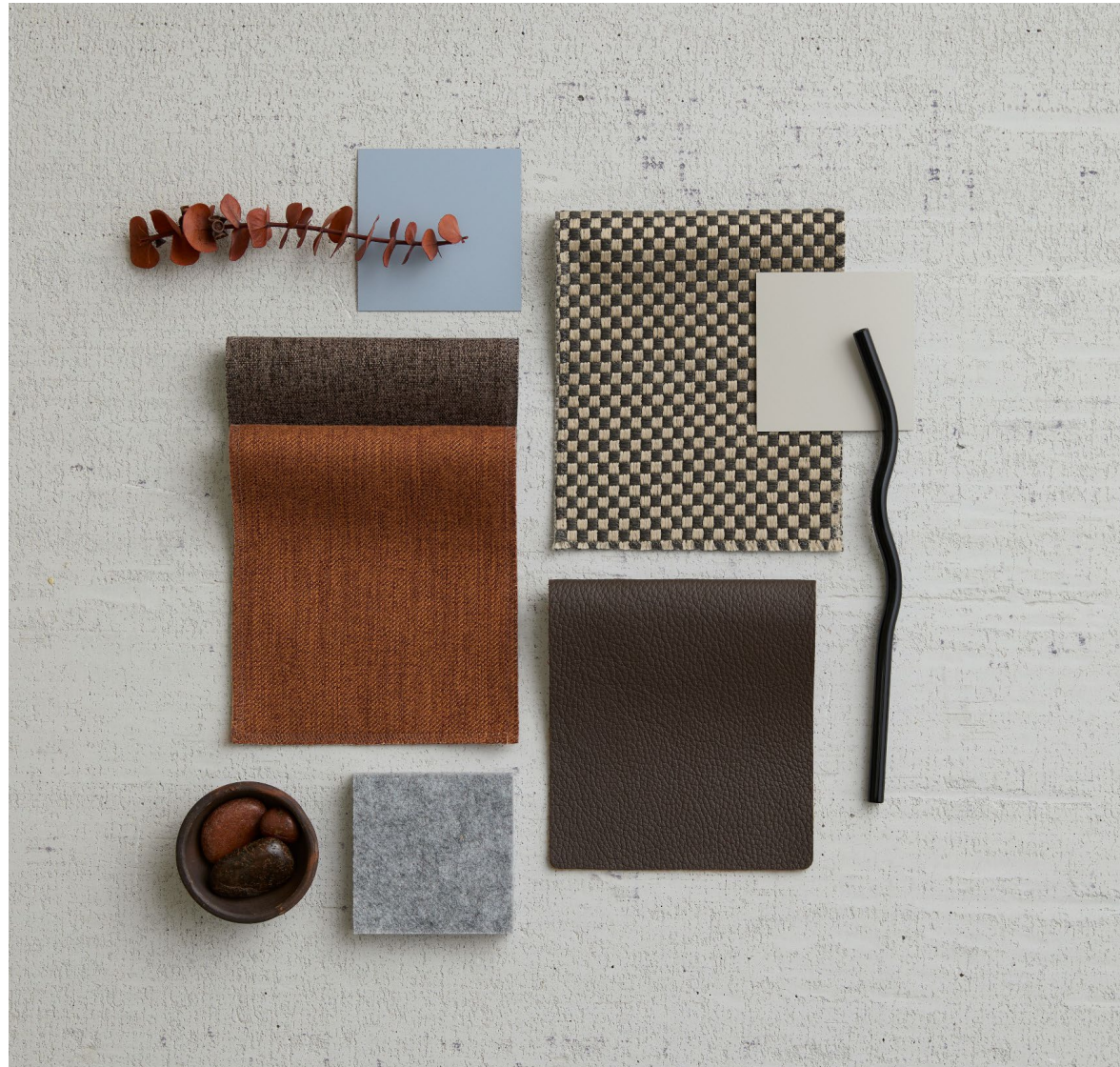
Echoing Grounding Neutrals, Welcoming Focus is a warm, tactile blend of earthy neutrals, soft textures, and natural materials that supports both focused work and spontaneous interaction in a welcoming, well-organized environment. Ideal for multifunctional zones that transition seamlessly from heads-down productivity to casual conversation and guest engagement.



# Sunbaked Layers

*Earthy, tactile, and inviting tones add a refined warmth that is visually cohesive and emotionally resonant — creating a sense of comfort and understated sophistication.*





## Quiet Shelter

Building off Sunbaked Layers, this is a warm, textured blend of earthy browns, soft greys, and muted blues that evokes a sense of cozy retreat and grounded functionality. Quiet Shelter feels inviting, layered, and thoughtfully grounded, perfect for a space that transitions between group gatherings and personal moments.



## Soft Sync

Resonating with the warmth and tactility of Sunbaked Layers, Soft Sync feels modern yet inviting, with a subtle interplay of digital sophistication and tactile comfort—perfect for spaces that support both team huddles and solo work, while encouraging spontaneous interaction.

# Twilight Tones

*A serene, minimal, and quietly expressive palette, with a cool-toned sophistication that could suit both modern and nature-inspired design contexts.*





## Soft Focus

Soft Focus supports Twilight Tones by maintaining a nature-infused, calming palette. The palette feels balanced, adaptable, and thoughtfully composed, perfect for environments that blend privacy, personalization, and team functionality—from pinwheel-configured workstations to shared lockers and flexible seating.



## Interactive Energy

Interactive Energy complements Twilight Tones by introducing vibrant, yet balanced hues. A versatile mix of blue, yellow, and green, the palette feels active and adaptable, perfect for environments that encourage spontaneous interaction.

# Rooted In Nature

*Inspired by nature, these lush tones create serenity indoors. A natural meadow is filled with layers of green, these finishes are meant to replicate layered tones with grounding elements..*





## Quiet Grove

Quiet Grove supports Rooted in Nature by maintaining a rich, earthy palette—greens, browns, greys, and wood tones—while introducing subtle metallics and biophilic accents. Perfect for environments that blend digital tools with natural comfort, and support both group interaction and personal retreat.





## Curated Calm

Curated Calm complements Rooted in Nature by softening the palette into chalky neutrals, muted greens, and light pinks, while retaining natural wood tones. The palette feels organized, approachable, and quietly expressive, ideal for a material library that encourages conversation, creativity, and clarity through thoughtful design.

# Peaceful Energy

*These soft colors balanced by grounding elements create an atmosphere ready for creativity and imagination.*





## Grounded Clarity

With muted earth tones and tactile materials, Grounded Clarity reduces visual noise and cognitive fatigue, making it ideal for focused workspaces, long work sessions, and adaptable task zones. It translates the emotional calm of Peaceful Energy into visual simplicity and functional support.

# Display Detail

---

# Physical Marketing Materials

The **Inspiration Guide** and the **New & Notable Card Deck** are available to order through **Steelcase Marketing Resources**.

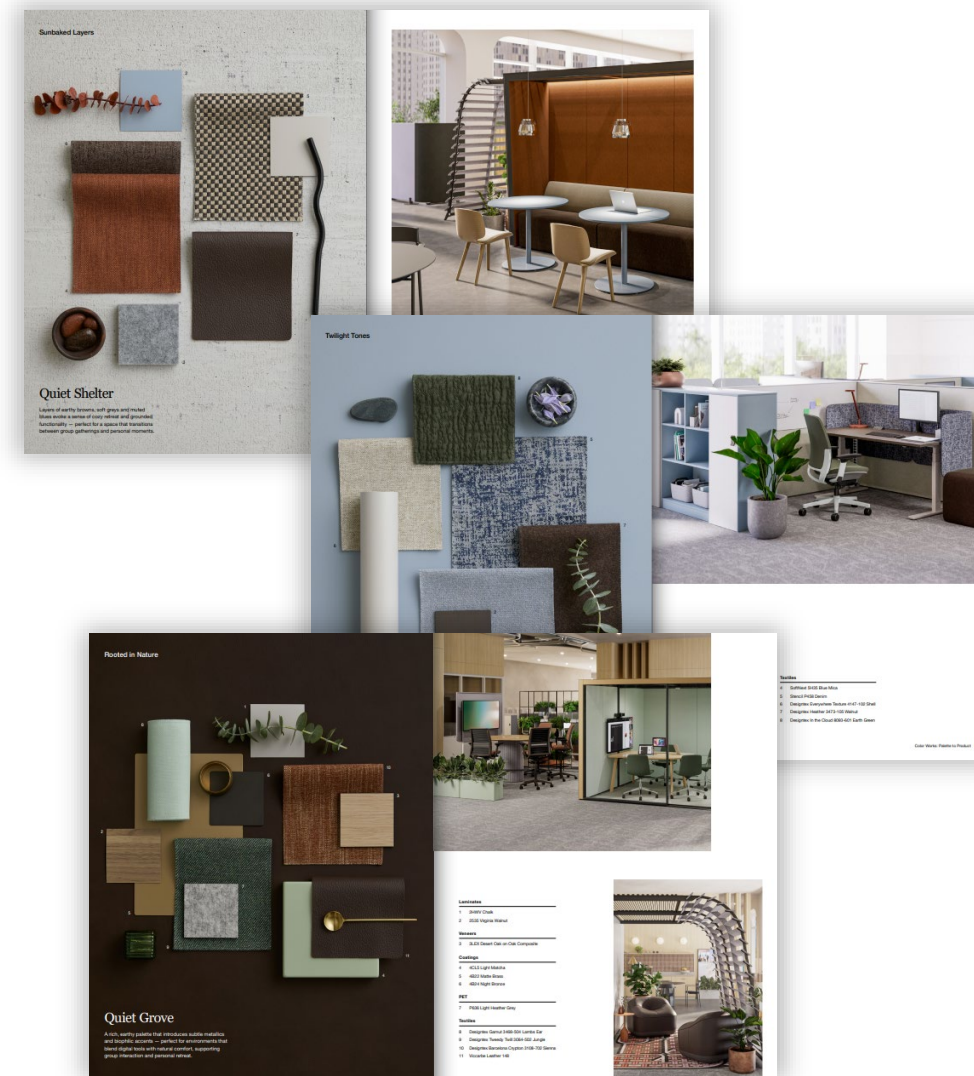
Both tools feature the same applications but give you flexibility in how you use them.

**Want to share everything?**  
Present the **Inspiration Guide**.

**Want to highlight specific palettes that best fit your customer or project?** Bring a few cards from the **Card Deck** that best suit your needs.

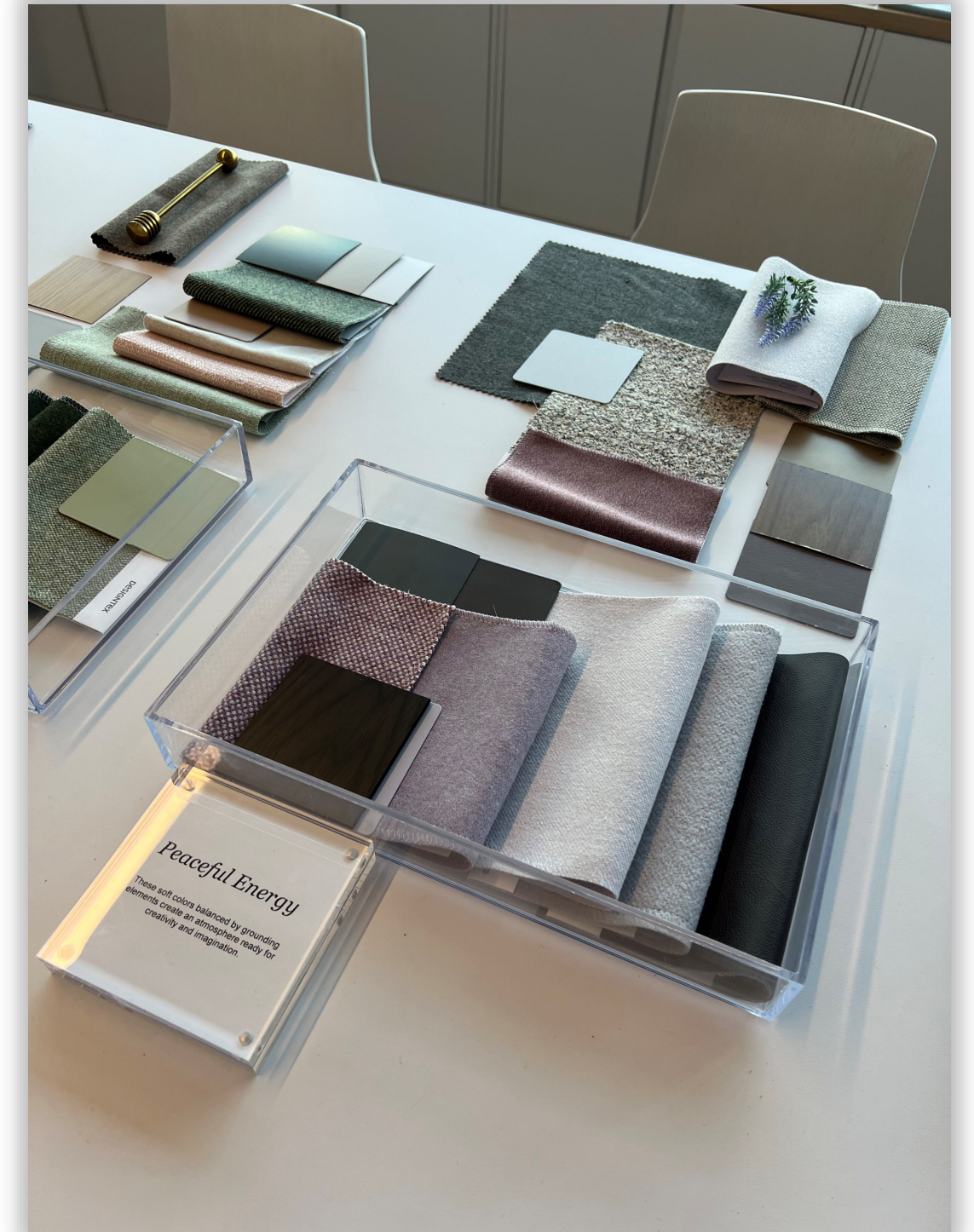
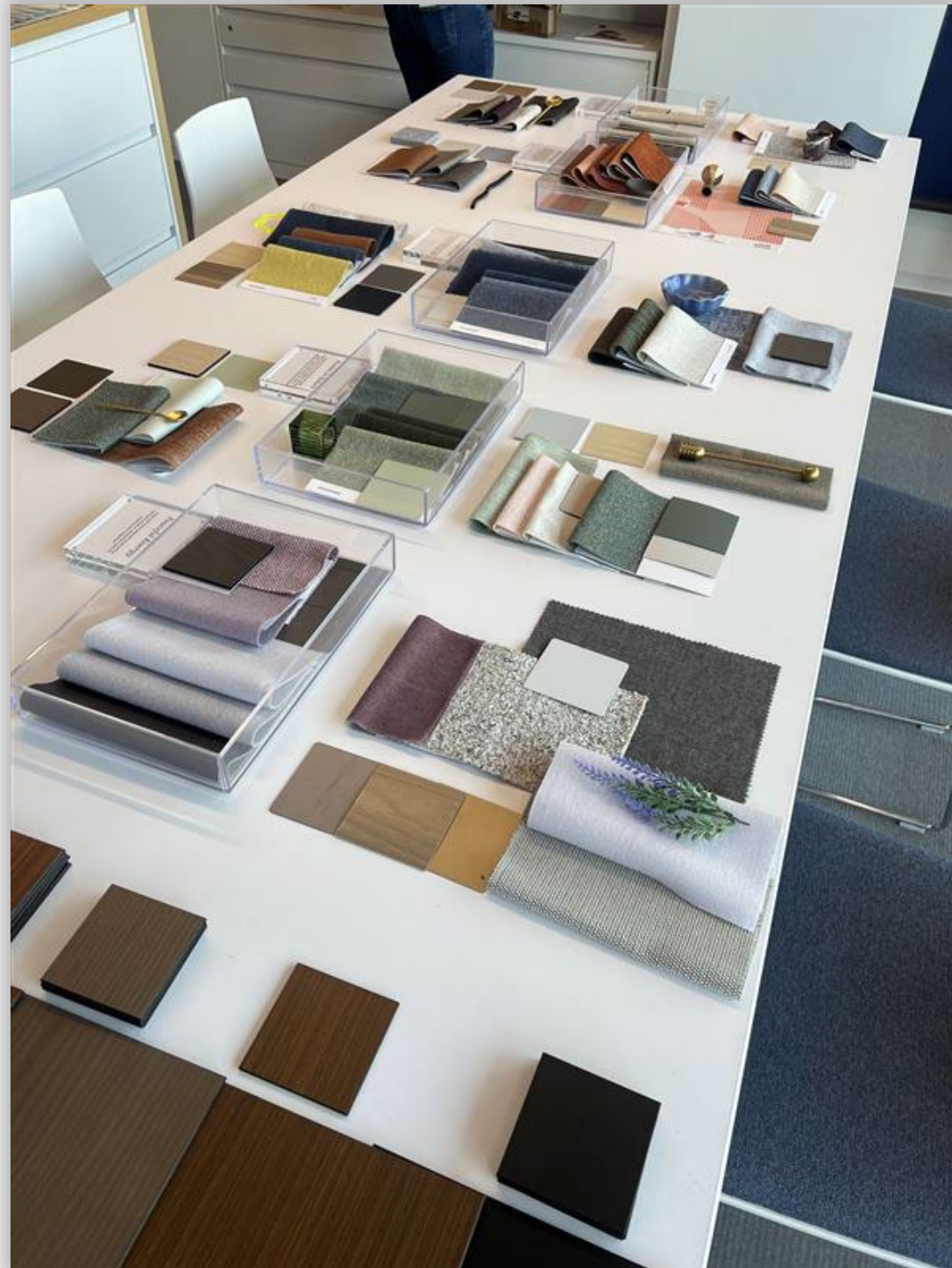


Item number: 25-0000150



Item number: 25-0000148

# Tabletop Display Example



# Palette Order

## Display Setup Instructions:

### Organize by Color Chapter:

Begin by identifying the color chapters. These should be placed in a vertical line through the center of the display.

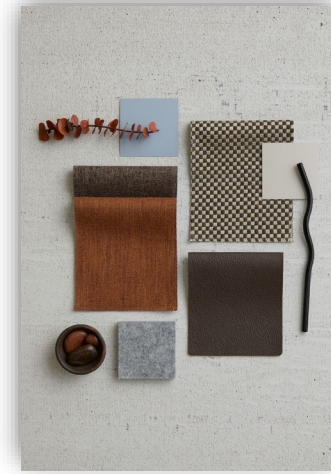
### Pair Application Palettes:

For each color chapter, place the corresponding surface material palettes on either side—left and right. These palettes should reflect the finishes and materials that complement the central color chapter.

*Connected Comfort*



*Quiet Shelter*



*Soft Focus*



*Curated Calm*



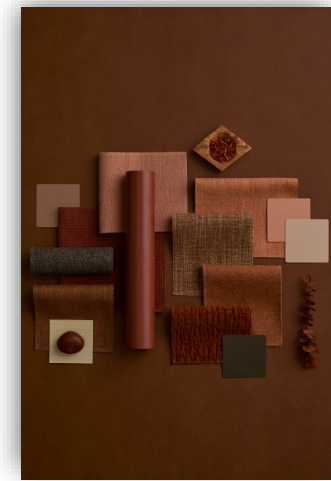
*Grounded Clarity*



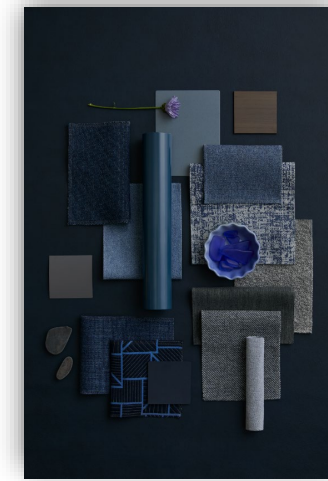
*Grounding Neutrals*



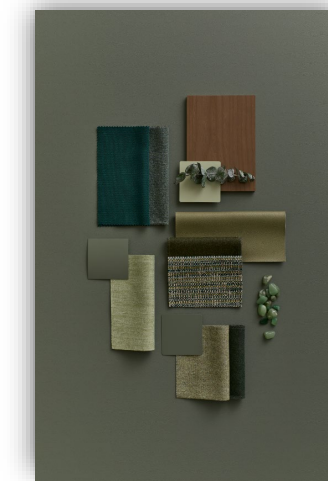
*Sunbaked Layers*



*Twilight Tones*



*Rooted in Nature*



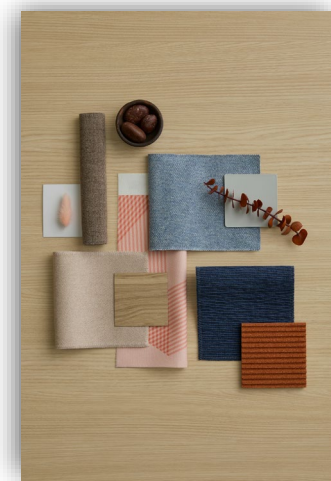
*Peaceful Energy*



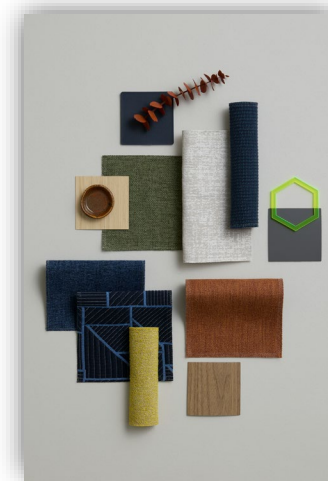
*Welcoming Focus*



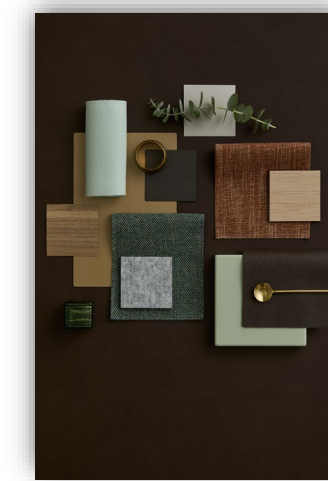
*Soft Sync*



*Interactive Energy*



*Quiet Grove*



# Palette Organization + Color Tray Recommendations

## Group by Palette

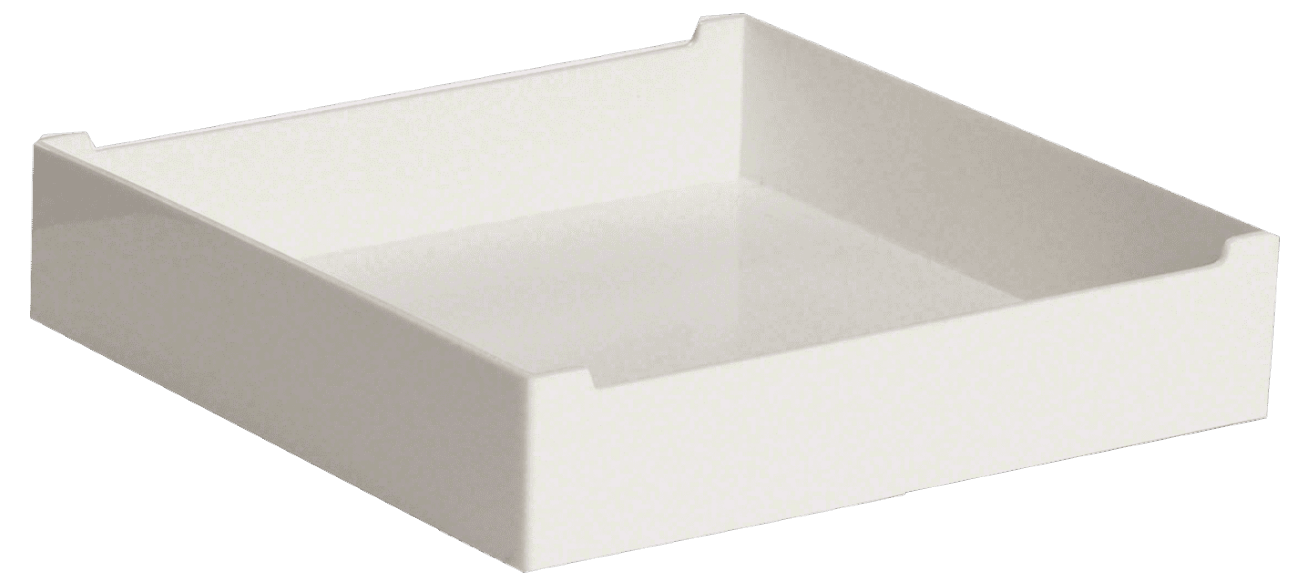
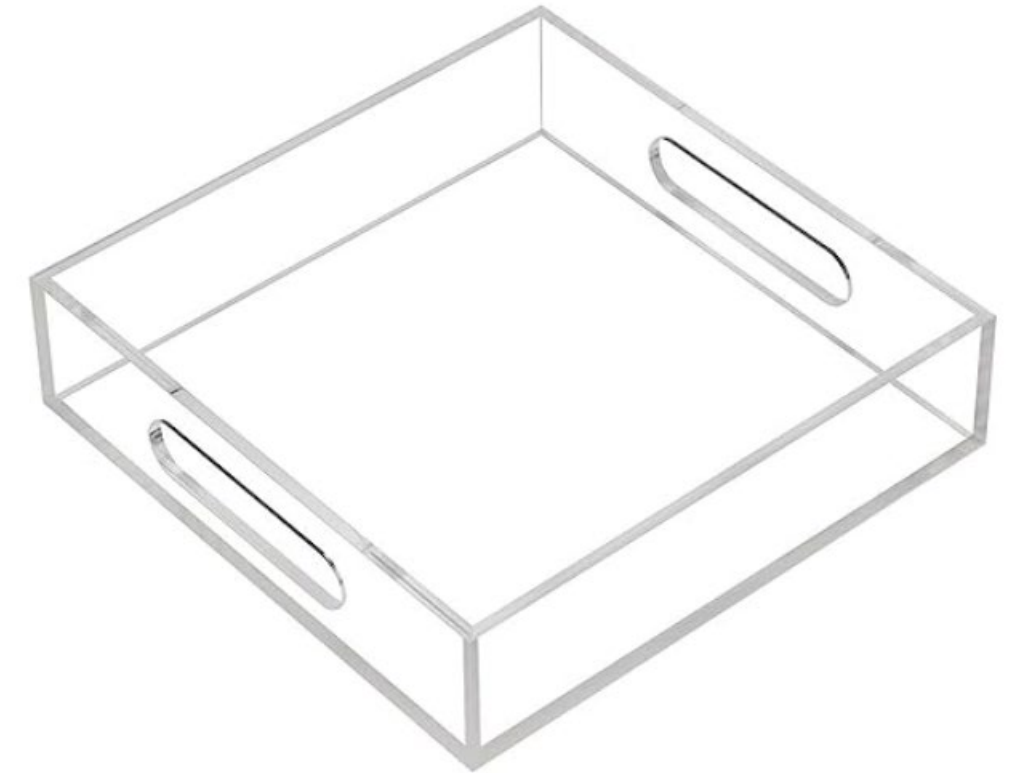
- Use one tray per palette to keep materials grouped and easy to reference. A clear acrylic 8" x 8" tray can be ordered through Amazon. Steelcase SOTO Personal Boxes are another great option.

## Follow a Consistent Layout

- Arrange samples in a logical order—such as by application type (e.g., upholstery, laminate, paint) or by visual hierarchy (light to dark, warm to cool).

## Label Clearly

- Include a label or tag on each tray with the palette name or color chapter to avoid mix-ups.





# Labels

Create a label for each palette to ensure clear identification and easy reference.

Use clear acrylic magnetic frames to display the labels. These frames provide a clean, modern look and allow for easy updates or swaps.

Place the frame in front of or beside each tray so the label is visible without obstructing the samples.

Labels should include:

- Palette name
- Optional: brief description or color theme



*Connected Comfort*



*Grounding Neutrals*



*Welcoming Focus*

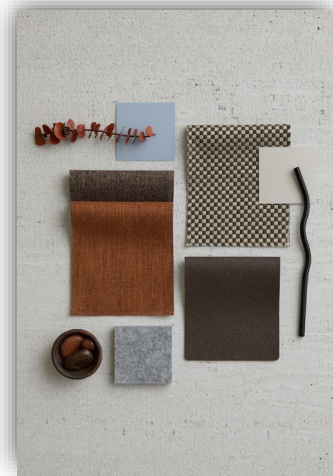


Material Type	Description	Where to Order
Laminate	2HWV Chalk	Steelcase Marketing Resources
Laminate	Formica Natural Ash 8843	Formica
Textile, Designtex	Designtex Cozy Texture 3063-101 Sand	Designtex
Textile, Designtex	Designtex Heather 3473-405 Midnight	Designtex
Textile, Designtex	Designtex Heather 3473-604 Concord	Designtex
Textile, Designtex	Designtex Woolish 3973-701 Pink Salt	Designtex
Laminate	2HWV Chalk	Steelcase Marketing Resources
Leather	Café L211 Chocolate Mousse	Steelcase Marketing Resources
Paint	4240 Chalk	Steelcase Marketing Resources
Paint	4B22 Matte Brass	Steelcase Marketing Resources
Paint	4B23 Burnished Bronze	Steelcase Marketing Resources
Paint	7225 Sand	Steelcase Marketing Resources
Textile	Brisa BR04 Truffle	Steelcase Marketing Resources
Textile	Brisa BR30 Bone	Steelcase Marketing Resources
Textile	Dovetail 5H42 Sandstone	Steelcase Marketing Resources
Textile	Remx RE06 Linen Beige	Steelcase Marketing Resources
Textile	Stand In 5625 Powder	Steelcase Marketing Resources
Textile	Steelcut Trio TR03 Cassonade Beige	Steelcase Marketing Resources
Textile, Designtex	Designtex Lambert 3623-801 Fog	Designtex
Textile, Designtex	Designtex Micro Tweed 8250-302 Bear	Designtex
Textile, Designtex	Designtex Mohair Plus 3575-102 Pumice	Designtex
Veneer	3LEX Desert Oak on Oak Composite	Steelcase Marketing Resources
Laminate	Formica 5786 Ashwood Oak	Formica
Laminate	2HWV Chalk	Steelcase Marketing Resources
Laminate	2TH2 Fawn Cypress	Steelcase Marketing Resources
Laminate	2759 Warm White	Steelcase Marketing Resources
Leather	Antic Cuir Leather 142	Viccarbe
Leather	Viccarbe Leather Anticcuir 126	Viccarbe
Paint	4B22 Matte Brass	Steelcase Marketing Resources
Paint	4240 Chalk	Steelcase Marketing Resources
Rug	Moooi Crisp Dawn Awakens In Light	Mooi
Textile	Intermix Opaque KR16 Bronze	Steelcase Marketing Resources
Textile, Designtex	Designtex Arne 4141-804 Mid Grey	Designtex
Textile, Designtex	Designtex Heather 3473-604 Concord	Designtex
Textile, Designtex	Designtex Heather 3473-307 Walrus	Designtex
Textile, Designtex	Designtex Lambert 3623-801 Fog	Designtex
Textile, Designtex	Designtex Wannabe Rib 5622-106 Cream	Designtex
Textile, Designtex	Designtex Woolish 3973-101 Sandstone	Designtex

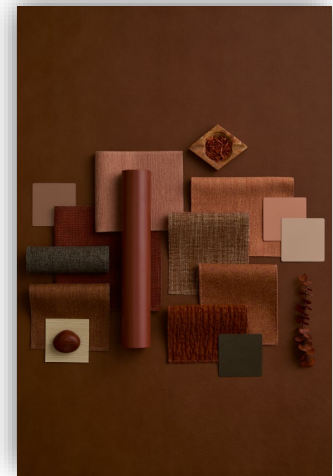
*To access the Excel version of this list for all palettes, please refer to the [Fall 2025 New + Notable Palettes Sample Ordering Guide](#) by clicking the link or scanning the QR code below.*



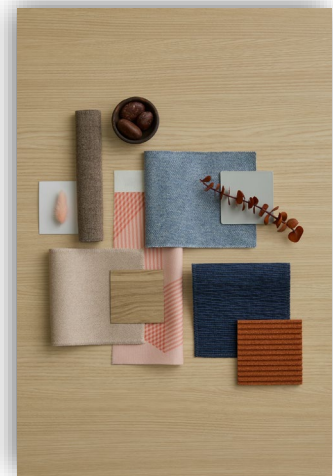
*Quiet Shelter*



*Sunbaked Layers*



*Soft Sync*



Material Type	Description	Where to Order
Laminate	2HWV Chalk	Steelcase Marketing Resources
Laminate	2HAF Cloudy	Steelcase Marketing Resources
Leather	Viccarbe Leather 148	Viccarbe
PET	PC17 Flat Iron	Steelcase Marketing Resources
Textile, Designtex	Designtex Dovetail 8571-301 Nutmeg	Designtex
Textile, Designtex	Designtex Emblem 3068-101 Cobra	Designtex
Textile, Designtex	Designtex Helsinki Crypton 3105-105 Chocolate	Designtex
Laminate	Formica Natural Ash 8843	Formica
Leather	Café L213 Chai	Steelcase Marketing Resources
Paint	1ATG Rose Quartz	Steelcase Marketing Resources
Paint	4B23 Burnished Bronze	Steelcase Marketing Resources
Paint	4B25 Matte Copper	Steelcase Marketing Resources
Paint	4CL6 Terra	Steelcase Marketing Resources
Paint	4CL7 Sandstone	Steelcase Marketing Resources
Textile	Dovetail 5H44 Terra	Steelcase Marketing Resources
Textile	Dovetail 8571-301 Nutmeg	Steelcase Marketing Resources
Textile	SoftNext 5H37 Burnt Umber	Steelcase Marketing Resources
Textile, Designtex	Designtex Barcelona Crypton 3018-702 Sienna	Designtex
Textile, Designtex	Designtex Heather 3473-452 Rust	Designtex
Textile, Designtex	Designtex Helsinki Crypton 3105-105 Chocolate	Designtex
Textile, Designtex	Designtex In The Cloud 8093-302 Spice	Designtex
Textile, Designtex	Designtex Salsa 8150-401 Petal	Designtex
Laminate	2730 Arctic White	Steelcase Marketing Resources
Laminate	2TH2 Fawn Cypress	Steelcase Marketing Resources
Laminate	Formica 8843 Natural Ash	Formica
Plastic	6697 Fog	Steelcase Marketing Resources
Textile	Billiard Multi Use 5H18 Teak	Steelcase Marketing Resources
Textile, Designtex	Designtex Custom Graphic Ribbon #E7CDB9 / #CB865F	Designtex
Textile, Designtex	Designtex Heather 3473-251 Champagne	Designtex
Textile, Designtex	Designtex Mateo 3895-402 Dark Blue	Designtex
Textile, Designtex	Designtex Micro Tweed 8250-754 Denim	Designtex

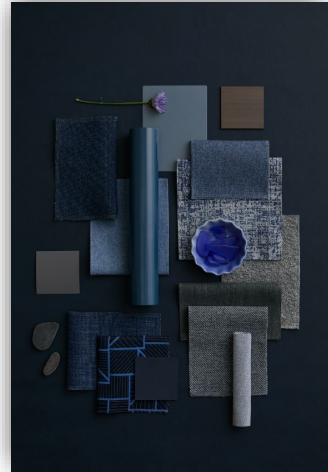
To access the Excel version of this list for all palettes, please refer to the [Fall 2025 New + Notable Palettes Sample Ordering Guide](#) by clicking the link or scanning the QR code below.



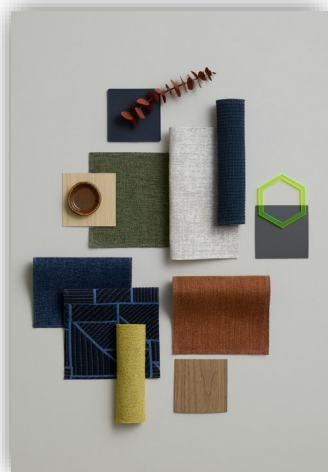
*Soft Focus*



*Twilight Tones*



*Interactive Energy*



Material Type	List of Samples	Where to Order
Laminate	2HWV Chalk	Steelcase Marketing Resources
Laminate	2HAF Cloudy	Steelcase Marketing Resources
Paint	4240 Chalk	Steelcase Marketing Resources
Textile	SoftNext 5H35 Blue Mica	Steelcase Marketing Resources
Textile	Stencil P458 Denim	Steelcase Marketing Resources
Textile, Designtex	Designtex Everywhere Texture 4147-102 Shell	Designtex
Textile, Designtex	Designtex Heather 3473-105 Walnut	Designtex
Textile, Designtex	Designtex In the Cloud 8093-601 Earth Green	Designtex
Veneer	Veneer Thunder Walnut 37A2	Steelcase Marketing Resources
Laminate	Formica Natural Ash 8843	Formica
Laminate	Laminate Cloudy 2HAF	Steelcase Marketing Resources
Laminate	Laminate Satin Stone 24H3	Steelcase Marketing Resources
Leather	Café L214 Blueberry Tart	Steelcase Marketing Resources
Paint	4B26 Smoked Mica	Steelcase Marketing Resources
Plastic	6336 Jazz	Steelcase Marketing Resources
Textile	Dovetail 5H50 Darkest Grey	Steelcase Marketing Resources
Textile	Intermix Baltic KR18	Steelcase Marketing Resources
Textile	SoftNext Blue Mica 5H23	Steelcase Marketing Resources
Textile	Stencil Denim P458	Steelcase Marketing Resources
Textile, Designtex	Designtex Barcelona Crypton 3108-403 Midnight	Designtex
Textile, Designtex	Designtex Habitat 3069-801 Mineral	Designtex
Textile, Designtex	Designtex Heather 3473-407 Mid Blue	Designtex
Textile, Designtex	Designtex Micro Tweed 8250-757 Ballpoint	Designtex
Textile, Designtex	Designtex Road Trip 8408-402 Canal	Designtex
Textile, Designtex	Designtex Tweedy Twill 3064-802 Zebra	Designtex
Veneer	Veneer Thunder Walnut 37A2	Steelcase Marketing Resources
Laminate	Formica 8843 Natural Ash	Formica
Laminate	24H3 Satin Stone	Steelcase Marketing Resources
Laminate	2535 Virginia Walnut	Steelcase Marketing Resources
Plastic	6336 Jazz	Steelcase Marketing Resources
Textile	Intermix KR18 Baltic	Steelcase Marketing Resources
Textile	Stencil P464 Orchid	Steelcase Marketing Resources
Textile, Designtex	Designtex Barcelona Crypton 3108-403 Midnight	Designtex
Textile, Designtex	Designtex Dovetail 8571-301 Nutmeg	Designtex
Textile, Designtex	Designtex Everywhere Texture 4147-504 Loden	Designtex
Textile, Designtex	Designtex Road Trip 8408-402 Canal	Designtex
Textile, Designtex	Designtex Tiny Boucle 3926-201 Sunbeam	Designtex

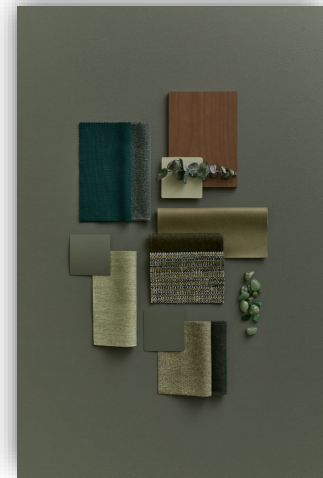
To access the Excel version of this list for all palettes, please refer to the [Fall 2025 New + Notable Palettes Sample Ordering Guide](#) by clicking the link or scanning the QR code below.



*Curated Calm*



*Rooted in Nature*



*Quiet Grove*



Material Type	List of Samples	Where to Order
Custom Film	CDP Glass Stripes 06	Designtex
Laminate	2HWV Chalk	Steelcase Marketing Resources
Laminate	2HAE Dark Olivine	Steelcase Marketing Resources
Laminate	2TH2 Fawn Cypress	Steelcase Marketing Resources
Laminate	Formica 8843 Natural Ash	Formica
Paint	4CL5 Light Matcha	Steelcase Marketing Resources
Paint	4CL7 Sandstone	Steelcase Marketing Resources
Textile	Dovetail 5H45 Honeydew	Steelcase Marketing Resources
Textile, Designtex	Designtex Brushed Flannel 3797-101 Creme	Designtex
Textile, Designtex	Designtex Distressed Texture 3935-301 Peony	Designtex
Textile, Designtex	Designtex Tweedy Twill 3064-502 Jungle	Designtex
Laminate	2HAE Dark Olivine	Steelcase Marketing Resources
Paint	4CL1 Dark Olivine	Steelcase Marketing Resources
Paint	4CL5 Light Matcha	Steelcase Marketing Resources
Textile	Brisa BR07 Sage	Steelcase Marketing Resources
Textile	Cogent: Connect 5SD2 Peacock	Steelcase Marketing Resources
Textile	Dovetail 5H45 Honeydew	Steelcase Marketing Resources
Textile	SoftNext 5H36 Jade	Steelcase Marketing Resources
Textile	Stand In Olivine	Steelcase Marketing Resources
Textile, Designtex	Designtex Heather 3473-505 Hunter	Designtex
Textile, Designtex	Designtex Heather 3473-506 Kelp	Designtex
Textile, Designtex	Designtex Micro Tweed 8250-601 Ivy	Designtex
Textile, Designtex	Designtex Spree 8221-701 Sprout	Designtex
Veneer	3LAX Graphite on Oak Composite	Steelcase Marketing Resources
Laminate	2HWV Chalk	Steelcase Marketing Resources
Laminate	2535 Virginia Walnut	Steelcase Marketing Resources
Leather	Viccarbe Leather 148	Viccarbe
Paint	4CL5 Light Matcha	Steelcase Marketing Resources
Paint	4B22 Matte Brass	Steelcase Marketing Resources
Paint	4B24 Night Bronze	Steelcase Marketing Resources
PET	P636 Light Heather Grey	Steelcase Marketing Resources
Textile, Designtex	Designtex Barcelona Crypton 3108-702 Sienna	Designtex
Textile, Designtex	Designtex Gamut 3468-504 Lambs Ear	Designtex
Textile, Designtex	Designtex Tweedy Twill 3064-502 Jungle	Designtex
Veneer	3LEX Desert Oak on Oak Composite	Steelcase Marketing Resources

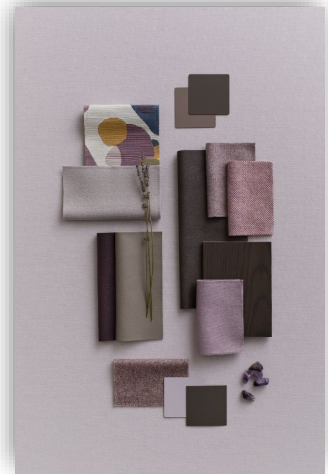
To access the Excel version of this list for all palettes, please refer to the [Fall 2025 New + Notable Palettes Sample Ordering Guide](#) by clicking the link or scanning the QR code below.



*Grounded Clarity*



*Peaceful Energy*



Material Type	List of Samples	Where to Order
Laminate	2535 Virginia Walnut	Steelcase Marketing Resources
Paint	7243 Seagull	Steelcase Marketing Resources
Paint	4CL8 Smokey Plum	Steelcase Marketing Resources
Paint	4B22 Matte Brass	Steelcase Marketing Resources
Textile	Billiard Multi-Use 5H21 Gunmetal	Steelcase Marketing Resources
Textile	Intermix Opaque KR14 Seagull	Steelcase Marketing Resources
Textile	Dovetail 5H49 Aura	Steelcase Marketing Resources
Textile, Designtex	Designtex Lounge 3162-601 Lilac	Designtex
Textile, Designtex	Designtex Speckle Boucle 3014-101 Pebble	Designtex
Laminate	24H4 Satin Mocha	Steelcase Marketing Resources
Leather	Café L209 Earl Grey	Steelcase Marketing Resources
Paint	4238 Mocha	Steelcase Marketing Resources
Paint	4CL3 Aura	Steelcase Marketing Resources
Paint	4CL8 Smokey Plum	Steelcase Marketing Resources
Textile	Bo Peep 5G84 Gravel	Steelcase Marketing Resources
Textile	Brisa BR06 Ash	Steelcase Marketing Resources
Textile	Brisa BR12 Abyss	Steelcase Marketing Resources
Textile	Dovetail 4H59 Aura	Steelcase Marketing Resources
Textile, Designtex	Designtex Checker 8360-851 Orchid	Designtex
Textile, Designtex	Designtex Heather 3473-601 Thistle	Designtex
Textile, Designtex	Designtex Micro Tweek 8250-851 Thistle	Designtex
Textile, Designtex	Designtex Mirco Tweed 8250-852 Fig	Designtex
Textile, Designtex	Designtex Wonder 9501-907	Designtex
Veneer	3LHX Espresso on Walnut Composite	Steelcase Marketing Resources

*To access the Excel version of this list for all palettes, please refer to the [Fall 2025 New + Notable Palettes Sample Ordering Guide](#) by clicking the link or scanning the QR code below.*



**Steelcase®**