

NOTICE TO AUTHORIZED USERS OF AWARD #23295 - Furniture, All Types (Except Hospital Room and Patient Handling)

This pricelist/catalog **may** contain items that are not within the Scope of the Contract Award and/or not within this Contractors approved furniture Categories. All Authorized Users are strongly encouraged to review the Scope of the Award and the Contractors Category Matrix prior to selecting items for purchase under the Contract. Per Solicitation Section 4.5 (D) - Procurement Instructions for Authorized Users: When placing orders under this Award, the Authorized User should follow and be familiar with the terms and conditions governing the Contract and are responsible for determining that the product(s) they intend to purchase fit within the scope of the Award.

References to other government contracts that may be included in a Contractor's pricelist/catalog, including any additional terms or conditions, are void under the OGS Award and should be disregarded. Only OGS' Terms and Conditions, including those within a Contractor's posted Contractor Information and Supplemental Information sheet, are valid under the Contract.

Additionally, Authorized Users are reminded that where discrepancies exist between Price List documents, the lowest price shall prevail (see Section 5.3 Price).

All orders must be placed with the Contractor, or the Contractor's OGS approved Authorized Reseller listed on the OGS website under the Award. Orders placed with a reseller not approved by OGS are not considered contract orders and therefore are not subject to the same terms and conditions of the OGS Award.

Authorized Users should contact the OGS Contract Manager listed on the Award with any questions pertaining to this pricelist/catalog.

NYS Price List Effective 3/4/24

Steelcase Pricing and Specification Guides

coalesse®

Coalesse Partners Products Specification Guide

June 2023

Table of Contents

Availability

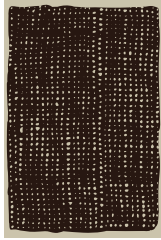
Electronic price list updated with release 200.F (U.S.) and 156.F (Canada), dated June 19, 2023.

All specifications subject to change without notice. Reference the electronic catalog/Hedberg for current pricing.

This Specification Guide reflects PL200.

Nanimarquina	3
Carl Hansen and Son	
Lounge Seating	
Shell Lounge Seating CH07	16
Lounge Seating CH100 Series	17
Paddle Lounge Chairs CH25	18
Airport Lounge Chair CH401	19
Ladderback Lounge Chair CH44	20
Wing Lounge Chair CH445	21
Oculus Lounge Chair CH468	22
Embrace Lounge Chair CHE015	23
Embrace Footstool CHE016	25
Cuba Chair CHMG501	27
Guest Seating	
CH53 Stools	28
CH88 Chairs	29
Elbow Chairs CH20	31
Wishbone Chairs CH24	32
Dining Chair CH23	34
Embrace Chair CHE005 and CHE004	35
Embrace Stools CHE006 and CHE007	39
Barstools CH56 and CH58	41
Collaborative and Conference Tables	
Dining Table CH327	43
Embrace Dining Table (CH20 Series)	44
Occasional Tables	
Coffee Tables CH008	45
Tray Table CH417	46
Embrace Coffee Table (CH21 Series)	47
CH108 Glass Coffee Table (CH100 Series)	48
Surface Materials	49
EMU	
EMU Rio	
Outdoor Chairs	54
Outdoor Tables	54
EMU Heaven	
Seating	56
Vases	66
Tables	67
EMU Round	
Seating	68
Tables	73
EMU Terramare	
Seating	75
Tables	77
Smart Table	79
EMU Shade Pro	
Sunshade	80
EMU Plus4	
Tables	81
EMU Lyze	
Seating	82
Surface Materials	84
Style Number Index	88

Nanimarquina



Design, craft, and social impact. A collection of handcrafted rugs, designed in collaboration with nanimarquina, are inspired by innovative patterns - some found in nature, others drawn from or found in textile weaving - and reflects the Coalesse color point of view. The globally exclusive collection includes six designs in various techniques; including hand-tufted, handloomed dhurrie, and outdoor rugs.

Together with Care & Fair, nanimarquina is supporting artisans and their families through education and access to health programs.

Tip: Rug size may vary by up to 5% due to the nature of the handcrafted process.

Tip: Refer to Coalesse Surface Materials Reference Guide for additional detail and references to color.

Tip: Rug care instructions are included on the label on the backside of every rug.

Standard Includes

- Technique: hand-tufted
- Pile height: 12 mm
- For indoor use only
- Rug pad not required
- Design: Nani Marquina

Options

Option	Value	Price
Size Option	10x15	Prices below
	12x15	Prices below
	6x9	Prices below
	8x10	Prices below
	9x13	Prices below
	Dia 8'2"	Prices below
Color Option	Basket 1	No cost
	Basket 2	No cost
	Basket 3	No cost
	Basket 4	No cost
	Basket 5	No cost

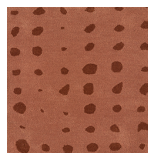
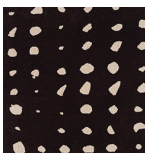
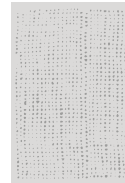
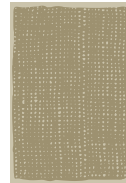
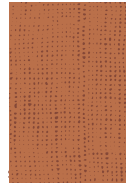
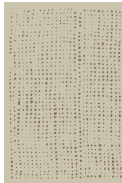
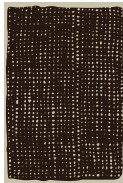
Specification Information

Style Number	Prices					
Rug Size	6D x 9W	8'2" Dia.	8D x 10W	9D x 13W	10D x 15W	12D x 15W

Basket, Hand-Tufted Rug

CONMBASKET	No cost	\$431.99	\$2919.74	\$7261.91	\$9212.55	\$12,402.50
------------	---------	----------	-----------	-----------	-----------	-------------

Rug Colorway



Basket 1

Basket 2

Basket 3

Basket 4

Basket 5

Nanimarquina



Tip: Rug size may vary by up to 5% due to the nature of the handcrafted process.

Tip: Refer to Coalesse Surface Materials Reference Guide for additional detail and references to color.

Tip: Rug care instructions are included on the label on the backside of every rug.

Standard Includes

- Technique: hand-tufted
- Pile height: 12 mm
- For indoor use only
- Rug pad not required
- Design: Nani Marquina

Options

Size Option		Prices below
	10x15	Prices below
	12x15	Prices below
	6x9	Prices below
	8x10	Prices below
	9x13	Prices below
	Dia 8'2"	Prices below
Color Option		No cost
	Shadows 1	No cost
	Shadows 2	No cost
	Shadows 3	No cost
	Shadows 4	No cost
	Shadows 5	No cost

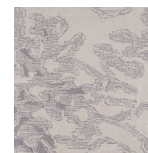
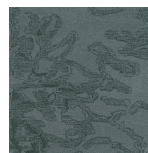
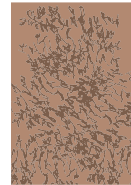
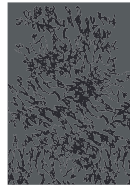
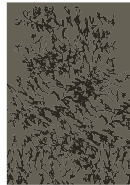
Specification Information

Style Number	Prices					
Rug Size	6D x 9W	8'2" Dia.	8D x 10W	9D x 13W	10D x 15W	12D x 15W

Shadows, Hand-Tufted Rug

CONMSHADOWS	No cost	\$332.98	\$2485.04	\$6082.18	\$7954.31	\$10,716.73
-------------	---------	----------	-----------	-----------	-----------	-------------

Rug Colorway



Shadows 1

Shadows 2

Shadows 3

Shadows 4

Shadows 5

Nanimarquina

Nanimarquina



Tip: Rug size may vary by up to 5% due to the nature of the handcrafted process.

Tip: Refer to Coalesse Surface Materials Reference Guide for additional detail and references to color.

Tip: Rug care instructions are included on the label on the backside of every rug.

Standard Includes

- Technique: hand-tufted
- Pile height: 12 mm
- For indoor use only
- Rug pad not required
- Design: Nani Marquina

Options

Option	Value	Price
Size Option	10x15	Prices below
	12x15	Prices below
	6x9	Prices below
	8x10	Prices below
	9x13	Prices below
	Dia 8'2"	Prices below
Color Option	Strokes 1	No cost
	Strokes 2	No cost
	Strokes 3	No cost
	Strokes 4	No cost
	Strokes 5	No cost

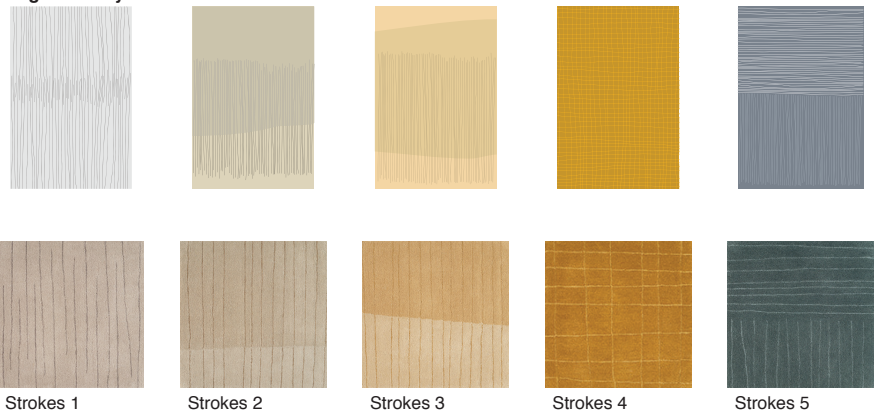
Specification Information

Style Number	Prices					
	Rug Size	6D x 9W	8'2" Dia.	8D x 10W	9D x 13W	10D x 15W

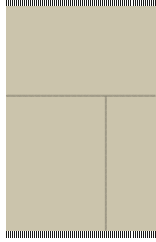
Strokes, Hand-Tufted Rug

CONMSTROKES	No cost	\$332.98	\$2485.04	\$6082.18	\$7954.31	\$10,716.73
-------------	---------	----------	-----------	-----------	-----------	-------------

Rug Colorway



Nanimarquina



Tip: Rug size may vary by up to 5% due to the nature of the handcrafted process.

Tip: Refer to Coalesse Surface Materials Reference Guide for additional detail and references to color.

Tip: Rug pad is sold separately.

Tip: Rug care instructions are included on the label on the backside of every rug.

Standard Includes

- Technique: hand-loomed
- Type: dhurrie
- Pile height: 6 mm
- With fringe or bound edges
- For indoor use only
- Rug pad required
- Design: Nani Marquina

Options

Option	Value	Price
Size Option	10x15	Prices below
	12x15	Prices below
	6x9	Prices below
	8x10	Prices below
	9x13	Prices below
	Dia 8'2"	Prices below
Color Option	Patch 1	No cost
	Patch 2	No cost
	Patch 3	No cost
	Patch 4	No cost
	Patch 5	No cost
Fringe Option	With Fringe	No cost

Specification Information

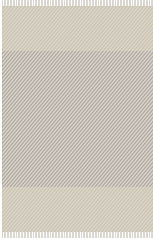
Style Number	Prices					
	Rug Size	6D x 9W	8'2" Dia.	8D x 10W	9D x 13W	10D x 15W

Patch, Hand-Loomed Rug

CONMPATCH	No cost	\$274.93	\$2360.66	\$5771.85	\$7575.62	\$10,231.17
Rug Colorway						
Patch 1	Patch 2	Patch 3	Patch 4	Patch 5		

Nanimarquina

Nanimarquina



Tip: Rug size may vary by up to 5% due to the nature of the handcrafted process.

Tip: Refer to Coalesse Surface Materials Reference Guide for additional detail and references to color.

Tip: Rug care instructions are included on the label on the backside of every rug.

Standard Includes

- Technique: hand-loomed
- Type: dhurrie
- Pile height: 7 mm
- With fringe or bound edges
- Outdoor use
- Design: Nani Marquina

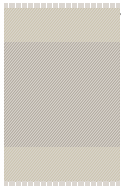

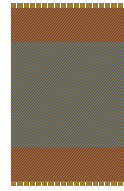


Options

Size Option	10x15	Prices below
	12x15	Prices below
	6x9	Prices below
	8x10	Prices below
	9x13	Prices below
	Dia 8'2"	Prices below
Color Option	Diagonal 1	No cost
	Diagonal 2	No cost
	Diagonal 3	No cost
	Diagonal 4	No cost
	Diagonal 5	No cost
Fringe Option	With Fringe	No cost

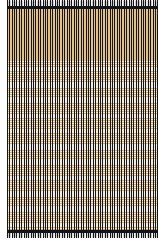
Specification Information

Style Number	Prices					
	Rug Size	6D x 9W	8'2" Dia.	8D x 10W	9D x 13W	10D x 15W

Diagonal, Outdoor Rug

CONMDIAGONAL	No cost	\$183.57	\$1584.24	\$4130.86	\$5100.03	\$6884.09
Rug Colorway						
Diagonal 1	Diagonal 2	Diagonal 3	Diagonal 4	Diagonal 5		

Nanimarquina



Tip: Rug size may vary by up to 5% due to the nature of the handcrafted process.

Tip: Refer to Coalesse Surface Materials Reference Guide for additional detail and references to color.

Tip: Rug care instructions are included on the label on the backside of every rug.

Standard Includes

- Technique: hand-loomed
- Type: dhurrie
- Pile height: 7 mm
- With fringe or bound edges
- Outdoor use
- Design: Nani Marquina

Options

Option	Value	Cost
Size Option	10x15	Prices below
	12x15	Prices below
	6x9	Prices below
	8x10	Prices below
	9x13	Prices below
	Dia 8'2"	Prices below
Color Option	Mesh 1	No cost
	Mesh 2	No cost
	Mesh 3	No cost
	Mesh 4	No cost
	Mesh 5	No cost
Fringe Option	With Fringe	No cost

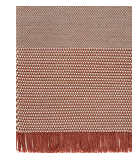
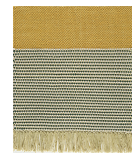
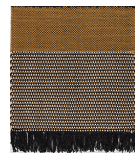
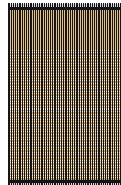
Specification Information

Style Number	Prices					
	Rug Size	6D x 9W	8'2" Dia.	8D x 10W	9D x 13W	10D x 15W

Mesh, Outdoor Rug

CONMMESH	No cost	\$183.37	\$1746.05	\$4106.71	\$5362.92	\$7245.64
-----------------	---------	----------	-----------	-----------	-----------	-----------

Rug Colorway



Mesh 1

Mesh 2

Mesh 3

Mesh 4

Mesh 5



Tip: Kilim rugs use a hand-loomed technique. Tufted rugs use a hand-tufted technique.

Tip: Rug size may vary by up to 5% due to the nature of the handcrafted process.

Tip: Rug care instructions are included on the label on the backside of every rug.

Standard Includes

- Technique: hand-loomed or hand-tufted
- Pile height:
 - hand-loomed - 4mm
 - hand-tufted - 14mm
- For indoor use only
- Rug pad not required
- Design: Claudia Valsells

Options

Rug Type	Kilim	Prices below
	Tufted	Prices below
Color Option	Tones 1	Prices below
	Tones 2	Prices below
	Tones 3	Prices below
	Tones Pieces	Prices below
Size Option	118x157	Prices below
	67x94	Prices below
	79x118	Prices below
	98x138	Prices below

Specification Information

Style Number	Prices			
	Rug Size	67" x 94"	79" x 118"	98" x 138"

Tones Rug

CONMTONES		67" x 94"	79" x 118"	98" x 138"	118" x 157"
Kilim, Tones 1-3		\$5176.50	\$7612.50	\$11,092.50	\$15,216.30
Tufted, Tones 1-3		\$6090.00	\$8952.30	\$13,050.00	\$17,904.60
Kilim, Tones Pieces		\$6116.10	\$8995.80	\$13,110.90	\$17,982.90
Tufted, Tones Pieces		\$7221.00	\$10,622.70	\$15,486.00	\$21,236.70

Rug Colorway



Tones 1



Tones 2



Tones 3



Tones Pieces

Nanimarquina



Tip: Rug care instructions are included on the label on the backside of every rug.

Tip: Rug size may vary by up to 5% due to the nature of the handcrafted process.

Tip: CONMSHADE is intended for indoor use only. CONMSHADEOUT is intended for outdoor use only.

Standard Includes

- Technique: hand-loomed
- Pile height: 5 mm
- For indoor or outdoor use
- Rug pad not required
- Design: Begüm Cana Özgür

Options

Color Option	Shade 1	No cost
	Shade 2	No cost
	Shade 3	No cost
	Shade 4	No cost
Size Option	118x157	Prices below
	67x94	Prices below
	79x118	Prices below
	98x138	Prices below

Specification Information

Style Number	Prices			
	Rug Size	67" x 94"	79" x 118"	98" x 138"

Shade Rug

CONMSHADEOUT	\$3436.50	\$5054.70	\$7377.60	\$10,109.40
CONMSHADE	\$4176.00	\$6133.50	\$8952.30	\$12,267.00

Rug Colorway



Shade 1



Shade 2



Shade 3



Shade 4



Tip: Shade Pouf outdoor is only available in the following colors: 1A, 2B, 3A, and 4A.

Tip: Poufs are available in one size: 15 2/5" x 15 2/5" x 15 7/10".

Tip: CONMSHADEPOUF is intended for indoor use only. CONMSHADEPOUFOUT is intended for outdoor use only.

Standard Includes

- Technique: hand-tufted
- For indoor or outdoor use
- Design: Begüm Cana Özgür & Marcos Catalán

Options

Color Option		
	Shade Pouf 1 A	Prices below
	Shade Pouf 1 B	Prices below
	Shade Pouf 2 A	Prices below
	Shade Pouf 2 B	Prices below
	Shade Pouf 3 A	Prices below
	Shade Pouf 3 B	Prices below
	Shade Pouf 4 A	Prices below
	Shade Pouf 4 B	Prices below

Specification Information

Style Number	Prices
Size	15 2/5" x 15 2/5" x 15 7/10"

Shade Pouf

CONMSHADEPOUF \$1522.50

CONMSHADEPOUFOUT \$1992.30

Pouf Colorway



Shade Pouf 1A



Shade Pouf 1B



Shade Pouf 2A



Shade Pouf 2B



Shade Pouf 3A



Shade Pouf 3B



Shade Pouf 4A



Shade Pouf 4B

Nanimarquina

Standard Includes

- Rug pad

Options

Size Option	6x9	Prices below
	8x10	Prices below
	9x13	Prices below

Specification Information

Style Number	Prices			
	Pad Size	6D x 9W	8D x 10W	9D x 13W
CONMPADPT		\$881.00	\$1304.00	\$1840.00

Nanimarquina

Tip: Rug size may vary by up to 5% due to the nature of the handcrafted process.

Tip: Rug care instructions are included on the label on the backside of every rug.

Standard Includes

- Technique: hand-loomed
- Pile height: 8 mm
- For indoor use only
- Rug pad not required
- Design: Nani Marquina

Options

Color Option	Re-Rug 1	Prices below
	Re-Rug 2	Prices below
	Re-Rug 3	Prices below
Size Option	118x157	Prices below
	67x94	Prices below
	79x118	Prices below
	98x138	Prices below

Specification Information

Style Number	Rug Size	Prices			
		67 x 94	79 x 118	98 x 138	118 x 157

Re-Rug

CONMRERUG	Re-Rug	67 x 94	79 x 118	98 x 138	118 x 157
	Re-Rug 1	\$3732.30	\$5489.70	\$8012.70	\$10,988.10
	Re-Rug 2	\$3732.30	\$5489.70	\$8012.70	\$10,988.10
	Re-Rug 3	\$3732.30	\$5489.70	\$8012.70	\$10,988.10

Rug Colorway



Re-Rug 1



Re-Rug 2



Re-Rug 3

Nanimarquina

Tip: Rug size may vary by up to 5% due to the nature of the handcrafted process.

Tip: Rug care instructions are included on the label on the backside of every rug.

Standard Includes

- Technique: hand-tufted
- Pile height: 14 mm
- For indoor use only
- Rug pad not required
- Design: Santi Moix

Options

Color Option	Flora Backyard Flora Bloom 1 or 2 Flora Promenade	Prices below Prices below Prices below
Size Option	118x157 67x59 67x94 79x118 98x138 99 Round	Prices below Prices below Prices below Prices below Prices below Prices below

Specification Information

Style Number	Rug Size	Prices					
		67 x 59	67 x 94	99 Round	79 x 118	98 x 138	118 x 157

Flora Rug

CONMFLORA		67 x 59	67 x 94	99 Round	79 x 118	98 x 138	118 x 157
	Flora Backyard	N.A.	\$8352.00	N.A.	\$12,284.40	\$17,922.00	\$24,568.80
	Flora Promenade	N.A.	\$7221.00	\$11,075.10	\$10,631.40	\$15,494.70	\$21,245.40
	Flora Bloom 1	\$4062.90	N.A.	N.A.	N.A.	N.A.	N.A.
	Flora Bloom 2	\$4062.90	N.A.	N.A.	N.A.	N.A.	N.A.

Rug Colorway



Flora Backyard



Flora Promenade



Flora Bloom 1



Flora Bloom 2

Nanimarquina

Nanimarquina

Tip: Rug size may vary by up to 5% due to the nature of the handcrafted process.

Tip: Rug care instructions are included on the label on the backside of every rug.

Standard Includes

- Technique: hand-loomed
- Pile height: 36 mm
- For indoor use only
- Rug pad not required
- Design: Ron Arad

Options

Color Option	Do-Lo-Rez Blues 1	Prices below
	Do-Lo-Rez Blues 2	Prices below
	Do-Lo-Rez Greys 1	Prices below
	Do-Lo-Rez Greys 2	Prices below
	Do-Lo-Rez Reds 1	Prices below
	Do-Lo-Rez Reds 2	Prices below
Size Option	72x109	Prices below
	82x100	Prices below

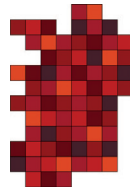
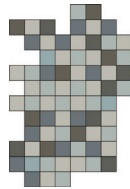
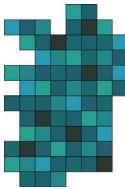
Specification Information

Style Number	Prices	
	72 x 109	82 x 100

Do-Lo-Rez

CONMDOLOREZ			
	Do-Lo-Rez Blues 1	\$6977.40	N.A.
	Do-Lo-Rez Greys 1	\$6977.40	N.A.
	Do-Lo-Rez Reds 1	\$6977.40	N.A.
	Do-Lo-Rez Blues 2	N.A.	\$6977.40
	Do-Lo-Rez Greys 2	N.A.	\$6977.40
	Do-Lo-Rez Reds 2	N.A.	\$6977.40

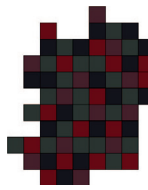
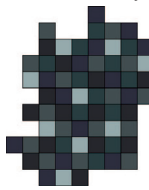
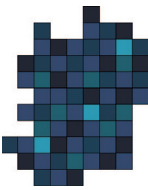
Rug Colorway



Do-Lo-Rez Blues 1

Do-Lo-Rez Greys 1

Do-Lo-Rez Reds 1



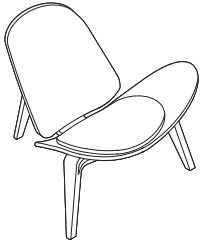
Do-Lo-Rez Blues 2

Do-Lo-Rez Greys 2

Do-Lo-Rez Reds 2

Lounge Seating

Shell Lounge Seating CH07



The shell lounge chair from Hans Wegner offers a strong, laminated suspension system. It flexes gently when sat in, and is comfortable for long periods of time.

Overall: 32 1/2"D x 36 1/4"W x 26"H. Seat: 13 3/4"H.

Tip: Not all finishes offered on every wood species; see matrix below.

Tip: For Customer's Own Material or Leather, see necessary requirements, important processing instructions, and ordering information. See Coalesse Surface Materials Reference Guide.

Tip: Contact Coalesse Customer Service for a collection of curated upholstered shell chairs.

Tip: Finish number 3235 is black painted oak.

Standard Includes

- Upholstered seat and back cushion: fabric or leather
- Bent ply frame
- Design: Hans Wegner

Options

Wood Frame	CHS Paint Color	No cost
	Oak Black	No cost
	Oak Lacquer	No cost
	Oak Oil	No cost
	Oak White Oil	No cost
	Oil Over Walnut	No cost
	Walnut Lacquer	No cost

Specification Information

Style Number	Prices									
	Fabric:					Leather:				
	COM	Group 1	Group 2	Group 3	Group 4	COL	Loke Leather	Thor Leather	SIF Leather	
CH07BEECH	\$5099	\$5120	\$5157	\$5184	\$5232	\$5330	\$5375	\$5586	\$6082	
CH07OAK	\$5531	\$5552	\$5589	\$5616	\$5664	\$5762	\$5807	\$6018	\$6514	
CH07WALNUT	\$6119	\$6140	\$6177	\$6204	\$6252	\$6350	\$6395	\$6606	\$7102	

COM/yds; 4/5 COL/sq ft; 20

Wood Species/Finish Number Matrix

Wood Species	Finish Number:				
	Lacquer	Oil	White Oil	CHS Color	Black Painted Oak
Beech	N.A.	N.A.	N.A.	3228, 3229, 3236, 3246, 3248, 3267, and 3269	N.A.
Oak	3255	3227	3265	N.A.	3235
Walnut	3325	3335	N.A.	N.A.	N.A.

Lounge Seating

Lounge Seating CH100 Series

CH100 series lounge seating is iconic seating from Carl Hansen and is comprised of the lounge CH103 and the club chair CH101, featuring finely stitched leather on all sides (including the bottom), no visible joints in the 100% stainless steel base, and a solid beech wood frame. This seating is meticulously finished and extremely comfortable.

Tip: For Customer's Own Material or Leather, see necessary requirements, important processing instructions, and ordering information. See Coalesse Surface Materials Reference Guide.

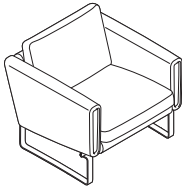
Tip: Cowhide is not available.

Standard Includes

- Internal frame: wood
- External frame and hardware: 4862 Stainless Steel
- Feather filled cushions
- Design: Hans Wegner

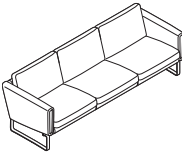
Specification Information

Style Number	Prices			
	Leather:			
	COL	Loke Leather	Thor Leather	SIF Leather



CH101 Lounge Club Chair

CH101L	\$10,629	\$11,142	\$11,762	\$19,338
Overall: 30"D x 30 3/4"W x 28"H				
COL/sq ft; 90				

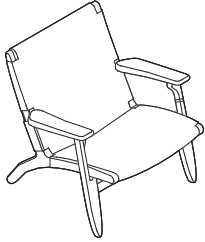


CH103 Lounge

CH103L	\$20,845	\$21,811	\$24,670	\$44,743
Overall: 30"D x 85 1/2"W x 28"H				
Seat: 16 1/2"H				
COL/sq ft; 220				

Lounge Seating

Paddle Lounge Chairs CH25



The Paddle lounge chair from Carl Hansen is a gracefully sculpted classic featuring a one-piece base construction for strength. It is remarkably durable and comfortable with skillfully hand woven paper cord.

Overall: 28 3/4"D x 28"W x 28 3/4"H. Seat: 15 1/4"H.

Tip: Not all finishes offered on every wood species; see matrix below.

Tip: For Customer's Own Material or Leather, see necessary requirements, important processing instructions, and ordering information. See Coalesse Surface Materials Reference Guide.

Tip: Finish number 3235 is black painted oak.

Standard Includes

- Frame: wood
- Hand-woven paper cord seat:
 - Black: P500
 - Natural: P501
- Design: Hans Wegner

Options

Wood Frame	Oak Soap	No cost
	Oak Black	Price below
	Oak Lacquer	Price below
	Oak Oil	Price below
	Oak White Oil	Price below
	Smoked Oak Oil	Price below
Frame Finish	Walnut Price Group 01	Price below
	Walnut Price Group 02	Price below

Specification Information

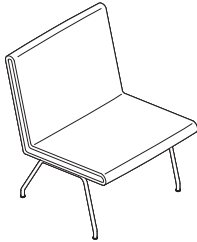
Style Number	Base Prices		Options (Add \$ to Base Price)				
	Paper cord seat:		Wood frame:				
	Natural	Black	Soap	Lacquer	Oil	White Oil	Black Painted Oak
CH25OAK	\$6311	\$6964	No cost	+\$398	+\$398	+\$398	+\$398
CH25SMKOAK	\$7189	\$7842	N.A.	N.A.	No cost	N.A.	N.A.
CH25WAL	\$7443	\$8254	N.A.	+\$335	No cost	N.A.	N.A.

Wood Species/Finish Number Matrix

Wood Species	Finish Number:				
	Soap	Lacquer	Oil	White Oil	Black Painted Oak
Oak	3225	3255	3227	3265	3235
Smoked Oak	N.A.	N.A.	3233	N.A.	N.A.

Lounge Seating

Airport Lounge Chair CH401



The Airport lounge chair was designed by Hans Wegner in the late fifties for the Copenhagen airport. Many of the originals are still in use. Preferred by museums and galleries for its unobtrusive styling and tremendous durability

Overall: 27 1/4"D x 23 1/2"W x 29 1/2"H. Seat: 17 1/4"H.

Tip: For Customer's Own Material or Leather, see necessary requirements, important processing instructions, and ordering information. See Coalesse Surface Materials Reference Guide.

Tip: Cowhide is not available.

Standard Includes

- Chair: fabric or leather
- Frame: 4862 Stainless Steel
- Design: Hans Wegner

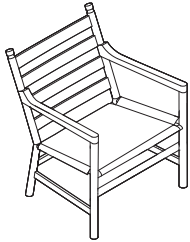
Specification Information

Style Number	Prices									
	Fabric:					Leather:				
	COM	Group 1	Group 2	Group 3	Group 4	COL	Loke	Thor	SIF	
CH401	\$4459	\$4839	\$5146	\$5222	\$5232	\$5786	\$5929	\$7064	\$10,091	
COM/yds; 2 1/4 COL/sq ft; 50										

Lounge Seating

Lounge Seating

Ladderback Lounge Chair CH44



The Ladderback lounge chair offers a comfortable, hand woven seat for collaboration or contemplation. Add button-fastened leather cushions to the back and seat to transform it into a plush easy chair.

Overall: 26"D x 25"W x 31 1/2"H. Seat: 15 1/4"H.

Tip: Not all finishes offered on every wood species; see matrix below.

Tip: For Customer's Own Material or Leather, see necessary requirements, important processing instructions, and ordering information. See Coalesse Surface Materials Reference Guide.

Tip: Finish number 3235 is black painted oak.

Standard Includes

- Frame: wood
- Hand-woven paper cord seat:
 - Black: P500
 - Natural: P501
- Design: Hans Wegner

Options

Wood Frame	Oak Black	Price below
	Oak Lacquer	Price below
	Oak Oil	Price below
	Oak Soap	Price below
	Oak White Oil	Price below
	Smoked Oak Oil	Price below
Cushion Option	Cushion Selection	No cost
	No Cushion Selection	No cost
Cushion Selections	COM - Customer's Own Material	+\$973
	Group 1 Fabric Selections	+\$1032
	Group 2 Fabric Selections	+\$1195
	Group 3 Fabric Selections	+\$1280
	Group 4 Fabric Selections	+\$1420
	Customer's Own Leather	+\$1836
	Loke Leather	+\$1843
	Thor Leather Leather	+\$2107
	SIF Leather	+\$2903

Specification Information

Style Number	Base Prices		Options (Add \$ to Base Price)						
	Paper cord seat:		Wood frame:						
	Natural	Black	Soap	Lacquer	Oil	Smoked Oil	White Oil	Black Painted Oak	
CH44OAK	\$3535	\$3717	No cost	+\$181	+\$181	+\$181	+\$181	+\$181	

COM/yds; 1 1/2 COL/sq ft; 20

Wood Species/Finish Number Matrix

Wood Species	Finish Number:					
	Soap	Lacquer	Oil	Smoked Oil	White Oil	Black Painted Oak
Oak	3225	3255	3227	3233	3265	3235

Lounge Seating

Wing Lounge Chair CH445

Lounge Seating

The versatile Wing lounge chair is notable for its handcrafted finishing, distinct angles, shoulder groove, and upholstered armrests. A contemporary classic from Danish designer, Hans Wegner.

Standard Includes

- Chair: fabric or leather
- Ottoman: fabric or leather
- Internal Beech wood frame
- Legs: 4862 Stainless Steel
- Design: Hans Wegner

Tip: For Customer's Own Material or Leather, see necessary requirements, important processing instructions, and ordering information. See Coalesse Surface Materials Reference Guide.

Tip: Cowhide is not available.

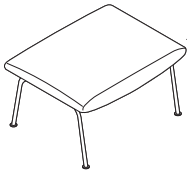
Specification Information

Style Number	Prices								
	Fabric:				Leather:				
	COM	Group 1	Group 2	Group 3	Group 4	COL	Loke Leather	Thor Leather	SIF Leather



Lounge Chair

CH445	\$9704	\$9768	\$10,330	\$11,258	\$12,352	\$13,056	\$13,068	\$13,927	\$20,418
Overall:	38 1/4"D x 35 1/2"W x 40 1/2"H								
Seat:	15 3/4"H								
COM/yds:	9 1/2 COL/sq ft; 120								



Ottoman

CH446	\$3306	\$3314	\$3560	\$3771	\$3880	\$3705	\$3725	\$4522	\$5673
Overall:	19 1/4"D x 24 1/2"W x 14 3/4"H								
COM/yds:	1 3/4 COL/sq ft; 20								

Lounge Seating

Oculus Lounge Chair CH468



The Oculus lounge chair, designed by Hans Wegner, delivers contemporary comfort with a refined sense of style and sophistication.

Overall: 37"D x 37"W x 41 1/2"H

Tip: For Customer's Own Material or Leather, see necessary requirements, important processing instructions, and ordering information. See Coalesse Surface Materials Reference Guide.

Tip: Cowhide is not available.

Tip: Matching ottoman is available, see style number CH446.

Standard Includes

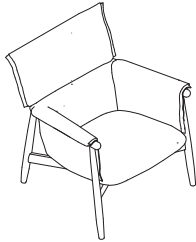
- Chair: fabric or leather
- Internal frame: solid beech
- Seat/back: down, foam
- Legs: 4862 Stainless Steel
- Design: Hans Wegner

Specification Information

Style Number	Prices									
	Fabric:					Leather:				
	COM	Group 1	Group 2	Group 3	Group 4	COL	Loke Leather	Thor Leather	SIF Leather	
CH468	\$9883	\$9942	\$10,512	\$11,469	\$12,575	\$13,302	\$13,312	\$14,169	\$20,796	
COM/yds; 6.1, COL/sq ft; 120										

Lounge Seating

Embrace Lounge Chair CHE015



The Embrace lounge chair was designed by EOOS for Carl Hansen & Son in 2016. Its soft cushions create added comfort for an inviting design that offers supreme relaxation

Overall: 31 1/5"D x 29 3/5"W x 33 1/2"H. Seat: 15 2/3"H

Tip: Not all finishes offered on every wood species; see matrix below.

Tip: For Customer's Own Material or Leather, see necessary requirements, important processing instructions, and ordering information. See Coalesse Surface Materials Reference Guide.

Tip: Black painted oak has a clearly visible wood structure.

Tip: Cowhide is not available.

Standard Includes

- Frame: solid hardwood
- Seat/back: upholstered with flame retardant cold foam
- Edge, knit group 01:
 - 5KE1 White
 - 5KE2 Natural
 - 5KE3 Blue
 - 5KE4 Brown
 - 5KE5 Black
- Design: EOOS

Options

Option	Options	Price
Frame Finish	Oak Price Group 01	No cost
	Oak Price Group 02	Price below
	Oak Price Group 03	Price below
	Oak Price Group 04	Price below
	Oak Price Group 05	Price below
	Walnut Price Group 01	Price below
Seat Back Finish	Walnut Price Group 02	Price below
	Customer's Own Leather	Price below
	Fabric Customer's Own Material	Price below
	Fabric Price Group 01	Price below
	Fabric Price Group 02	Price below
	Fabric Price Group 03	Price below
	Fabric Price Group 04	Price below
	Leather Price Group A	Price below
Leather Price Group B	Price below	
Leather Price Group C	Price below	
Edge Finish	Knit 01	No cost

Specification Information

Style Number	Base Price	Options (Add \$ to Base Price)								
		Wood frame:								
		Oak				Walnut				
		Soap	Oil	Smoked Oil	White Oil	Black Painted Oak	Lacquer	Oil	Lacquer	
CHE015	\$5097	No cost	+\$153	+\$153	+\$153	+\$153	+\$304	+\$732	+\$884	
Fabric Upcharges										
		Fabric:				Leather:				
		COM	Group 1	Group 2	Group 3	Group 4	COL	Loke Leather	Thor Leather	SIF Leather
Seat and back	No cost	+\$286	+\$617	+\$884	+\$1197	+\$437	+\$741	+\$1215	+\$2431	
COM/yds; 3 2/5 COL/sq ft; 75										

► Product Information continued on next page

Lounge Seating

Embrace Lounge Chair CHE015

► Product Information continued from previous page

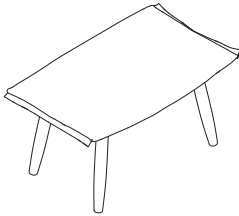
Specification Information

Wood Species/Finish Number Matrix

Wood Species	Finish Number:				
	Soap	Lacquer	Oil	White Oil	Black Painted Oak
Oak	3225	3255	3227	3265	3235
Walnut	N.A.	3325	3335	N.A.	N.A.

Lounge Seating

Embrace Footstool CHE016



Overall: 15"D x 27"W x 16 1/9"H

Tip: Not all finishes offered on every wood species; see matrix below.

Tip: For Customer's Own Material or Leather, see necessary requirements, important processing instructions, and ordering information. See Coalesse Surface Materials Reference Guide.

Tip: Black painted oak has a clearly visible wood structure.

Tip: Cowhide is not available.

Standard Includes

- Frame: solid hardwood
- Seat: upholstered with flame retardant cold foam
- Edge, knit group 01:
 - 5KE1 White
 - 5KE2 Natural
 - 5KE3 Blue
 - 5KE4 Brown
 - 5KE5 Black
- Design: EOOS

Options

Option	Material/Finish	Price
Frame Finish	Oak Price Group 01	No cost
	Oak Price Group 02	Price below
	Oak Price Group 03	Price below
	Oak Price Group 04	Price below
	Oak Price Group 05	Price below
	Walnut Price Group 01	Price below
Seat Finish	Walnut Price Group 02	Price below
	Fabric Customer's Own Material	No cost
	Customer's Own Leather	+\$150
	Fabric Price Group 01	+\$150
	Fabric Price Group 02	+\$242
	Leather Price Group A	+\$324
	Fabric Price Group 03	+\$343
	Fabric Price Group 04	+\$441
	Leather Price Group B	+\$457
	Leather Price Group C	+\$848
Edge Finish	Knit 01	No cost

Specification Information

Style Number	Base Price	Options (Add \$ to Base Price)							
		Wood frame: Oak				Walnut			
		Soap	Oil	Smoked Oil	White Oil	Black Painted Oak	Lacquer	Oil	Lacquer
CHE016	\$1668	No cost	+\$55	+\$55	+\$55	+\$55	+\$117	+\$143	+\$216
Fabric Upcharges									
	Fabric: COM	Group 1	Group 2	Group 3	Group 4	Leather: COL	Loke Leather	Thor Leather	SIF Leather
Seat	No cost	+\$150	+\$242	+\$343	+\$441	+\$150	+\$324	+\$457	+\$848
COM/yds; 1 1/10 COL/sq ft; 15									

► Product Information continued on next page

Lounge Seating

Embrace Footstool CHE016

► **Product Information continued from previous page**

Specification Information

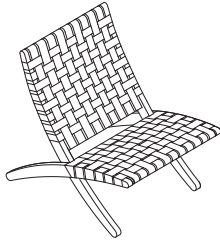
Wood Species/Finish Number Matrix

Wood Species Finish Number:

	Soap	Lacquer	Oil	White Oil	Black Painted Oak
Oak	3225	3255	3227	3265	3235
Walnut	N.A.	3325	3335	N.A.	N.A.

Lounge Seating

Cuba Chair CHMG501



The Cuba chair was designed by Morten Gottler in 1997. The CHMG501 captures contemporary design with its ideal balance of form and function. This folding chair is ideal as an extra or permanent fixture. Its light and foldable frame lends itself for convenient storage.

Overall: 31 1/9"D x 24"W x 30"H

Tip: When 3215 Black Painted Oak is specified for the frame, W516 Black Cotton Webbing must be selected for the seat and back.

Tip: Black painted oak has a clearly visible wood structure.

Standard Includes

- Frame: solid oak wood:
 - 3225 Oak Soap
 - 3227 Oak Oil
 - 3235 Black Painted Oak
- Seat and back: cotton webbing:
 - Natural: W515
 - Black: W516
- Hand-woven paper cord seat, if selected: Natural: P501
- Design: Morten Gottler

Specification Information

Style Number	Price	
	Cotton Webbing	Papercord
CHMG501	\$1709	\$2052

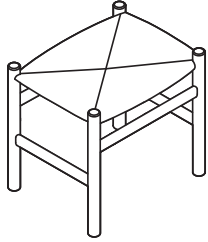
Foldable Frame



Lounge Seating

Guest Seating

CH53 Stools



The CH53 stool is simple and classic with handwoven detail in the paper cord seat. CH53 stool is a great accompaniment to the Ladderback lounge chair CH44.

Overall: 15 1/4"D x 19 3/4"W x 17"H.

Tip: Not all finishes offered on every wood species; see matrix below.

Tip: Finish number 3235 is black painted oak.

Standard Includes

- Frame: solid hardwood
- Hand-woven paper cord seat:
 - Black: P500
 - Natural: P501
- Design: Hans Wegner

Options

Wood Frame		
	Beech Soap	No cost
	Oak Soap	No cost
	Beech Lacquer	Price below
	Beech Oil	Price below
	CHS Paint Color	Price below
	Oak Black	Price below
	Oak Lacquer	Price below
	Oak Oil	Price below
	Oak White Oil	Price below
	Smoked Oak Oil	Price below

Specification Information

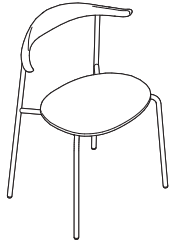
Style Number	Base Prices		Options (Add \$ to Base Price)						
	Natural	Black	Paper cord seat:		Wood frame:				
			Soap	Lacquer	Oil	White Oil	Smoked Oil	CHS Color	Black Painted Oak
CH53BEECH	\$868	\$1050	No cost	+\$228	+\$228	N.A.	N.A.	+\$228	N.A.
CH53OAK	\$993	\$1175	No cost	+\$195	+\$195	+\$195	+\$195	N.A.	+\$195

Wood Species/Finish Number Matrix

Wood Species	Finish Number:						
	Soap	Lacquer	Oil	White Oil	Smoked Oil	CHS Color	Black Painted Oak
Beech	3733	3745	3753	N.A.	N.A.	3228, 3229, 3236, 3238, 3239, 3246, 3248, 3251, 3253, 3267, 3268, and 3269	N.A.
Oak	3225	3255	3227	3265	3233	N.A.	3235

Guest Seating

CH88 Chairs



Overall: 17 1/2"D x 22 1/2"W x 30"H

The CH88 chair is a handcrafted side chair designed by Hans Wegner as a classic testament to materiality and design.

Tip: Not all finishes offered on every wood species; see matrix below.

Tip: Seat is oval-shaped, solid wood with upholstered cushion option.

Tip: Stackable up to four high.

Tip: For Customer's Own Material or Leather, see necessary requirements, important processing instructions, and ordering information. See Coalesse Surface Materials Reference Guide.

Tip: Finish number 3235 is black painted oak.

Standard Includes

- Upholstered seat cushion, if selected: fabric or leather
- Non-upholstered seat, if selected: wood
- Backrest: steam-bent solid wood
- Legs:
 - 4862 Stainless Steel
 - 4860 Black
- Design: Hans Wegner

Options

Option	Material/Finish	Price
Leg Finish	CHS Smooth Paint	No cost
	CHS Smooth Paint 2	+\$123
Wood Frame	Beech Soap	No cost
	CHS Paint Color	Beech: +\$80 Oak: +\$118
	Oak Soap	No cost
	Smoked Oak Oil	No cost
	Beech Lacquer	+\$80
	Beech Oil	+\$80
	Oak Black	+\$118
	Oak Lacquer	+\$118
	Oak Oil	+\$118
Upholstery	Oak White Oil	+\$118
	COM - Customer's Own Material	No cost
	Customer's Own Leather	Price below
	Group 1 Fabric Selections	Price below
	Group 2 Fabric Selections	Price below
	Group 3 Fabric Selections	Price below
	Group 4 Fabric Selections	Price below
Loke Leather	Price below	
SIF	Price below	
Thor Leather	Price below	

Specification Information

Style Number	Base Prices								
	Fabric:					Leather:			
	COM	Group 1	Group 2	Group 3	Group 4	COL	Loke Leather	Thor Leather	SIF Leather

Upholstered Seat Chairs

Style Number	COM	Group 1	Group 2	Group 3	Group 4	COL	Loke Leather	Thor Leather	SIF Leather
CH88PBEECH	\$1074	\$1074	\$1107	\$1131	\$1150	\$1180	\$1180	\$1229	\$1515
CH88POAK	\$1111	\$1111	\$1144	\$1168	\$1187	\$1217	\$1217	\$1266	\$1552
CH88PSMKOAK	\$1349	\$1349	\$1382	\$1406	\$1425	\$1349	\$1455	\$1504	\$1790

COL/sq ft; 8

► Product Information continued on next page

Guest Seating

CH88 Chairs

► **Product Information continued from previous page**

Specification Information

Style Number	Base Prices								
	Fabric:					Leather:			
	COM	Group 1	Group 2	Group 3	Group 4	COL	Loke Leather	Thor Leather	SIF Leather

Wood Seat Chairs

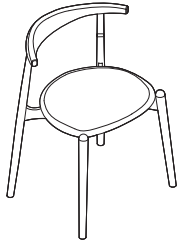
Style Number	Price	Group 1	Group 2	Group 3	Group 4	COL	Loke Leather	Thor Leather	SIF Leather
CH88BEECH	\$968	N.A.	N.A.	N.A.	N.A.	N.A.	N.A.	N.A.	N.A.
CH88OAK	\$1056	N.A.	N.A.	N.A.	N.A.	N.A.	N.A.	N.A.	N.A.
CH88SMKOAK	\$1406	N.A.	N.A.	N.A.	N.A.	N.A.	N.A.	N.A.	N.A.

Wood Species/Finish Number Matrix

Wood Species	Finish Number:					
	Soap	Lacquer	Oil	White Oil	CHS Color	Black Painted Oak
Beech	3733	3745	3753	N.A.	3210, 3213, 3228, 3229, 3236, 3238, 3239, 3246, 3248, 3251, 3253, 3267, 3268, and 3269	N.A.
Oak	3225	3255	3227	3265	N.A.	3235
Smoked Oak	N.A.	N.A.	3233	N.A.	N.A.	N.A.

Guest Seating

Elbow Chairs CH20



The Elbow chair from Carl Hansen is a highly crafted, stackable workhorse with the pedigree of a museum piece.

Overall: 18 1/2"D x 21 1/4"W x 28"H. Seat: 18"H.

Tip: Backrest is elliptical, steambent, and sculpted from a single piece of wood.

Tip: Seat is made from 11 layers of laminated veneer for increased stability with standard cold foam seat cushion.

Tip: Stackable up to four high.

Tip: For Customer's Own Material or Leather, see necessary requirements, important processing instructions, and ordering information. See Coalesse Surface Materials Reference Guide.

Tip: Finish number 3235 is black painted oak.

Standard Includes

- Upholstered seat cushion: fabric or leather
- Bent ply frame
- Design: Hans Wegner

Options

Wood Frame		
	Beech Soap	No cost
	Oak Soap	No cost
	Beech Lacquer	Price below
	Beech Oil	Price below
	CHS Paint Color	Price below
	Oak Black	Price below
	Oak Lacquer	Price below
	Oak Oil	Price below
	Oak White Oil	Price below

Specification Information

Style Number	Base Prices								
	Fabric:					Leather:			
	COM	Group 1	Group 2	Group 3	Group 4	COL	Loke Leather	Thor Leather	SIF Leather
CH20BEECH	\$1196	\$1196	\$1211	\$1234	\$1253	\$1330	\$1330	\$1389	\$1423
CH20OAK	\$1427	\$1427	\$1442	\$1465	\$1484	\$1561	\$1561	\$1620	\$1654

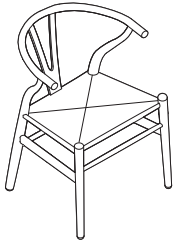
COM/yds; 1 yd, COL/sq ft; 8

Wood Species/Finish Number Matrix

Wood Species	Option (Add \$ to Base Price)	Finish Number:					
		Soap	Lacquer	Oil	White Oil	CHS Color	Black Painted Oak
Beech	+\$87	3733	3475	3753	N.A.	3228, 3229, 3236, 3246, 3248, 3267, and 3269	N.A.
Oak	+\$82	3225	3255	3227	3265	N.A.	3235

Guest Seating

Wishbone Chairs CH24



Overall: 20"D x 21 1/2"W x 29 1/2"H. Seat: 17 18/25"H.

The Wishbone chair from Carl Hansen is light, strong, simple, and supportive with its lyrical wishbone-shaped back.

Tip: Not all finishes offered on every wood species; see matrix below.

Tip: The Oak Walnut style number is a combination of oak legs and a walnut back.

Tip: When white paper cord is selected, only CHS colors are available.

Tip: Finish number 3795 is black painted ash.

Tip: Finish number 3235 is black painted oak.

Standard Includes

- Frame: solid hardwood
- Hand-woven paper cord seat:
 - Black: P500
 - Natural: P501
- Design: Hans Wegner

Options

Wood Frame	CHS Color	No cost
	CHS Paint Color	No cost
	Oil Over Walnut	No cost
	Walnut Lacquer	+\$182
	Beech Lacquer	Price below
	Beech Oil	Price below
	Beech Soap	Price below
	Oak Black	Price below
	Oak Lacquer	Price below
	Oak Oil	Price below
	Oak Soap	Price below
	Oak White Oil	Price below
	Paint Price Group 01	Price below
	Smoked Oak Oil	Price below
	Soap	Price below
	White Oil Over Ash	Price below
Leather Cushion Option	No Cushion Selection	No cost
	Leather Cushion Selection	+\$274
Leather Cushion	Loke Leather	No cost

Specification Information

Style Number	Base Prices		Options (Add \$ to Base Price)									
	Natural	Black	Paper cord seat:		Wood frame:							
			Natural	Black	Soap	Lacquer	Oil	White Oil	CHS Color	Black Painted Ash	Black Painted Oak	CHS Soft Matte
CH24BEECH	\$1116	\$1298			+\$157	No cost	No cost	N.A.	No cost	N.A.	N.A.	-\$27
CH24ASH	\$1116	\$1298			+\$157	N.A.	N.A.	+\$169	N.A.	No cost	N.A.	N.A.
CH24OAK	\$1116	\$1298			+\$157	+\$182	+\$157	+\$169	N.A.	N.A.	No cost	N.A.
CH24SMKOAK	\$1619	\$1801			N.A.	N.A.	No cost	N.A.	N.A.	N.A.	N.A.	N.A.
CH24WALNUT	\$1977	\$2159			N.A.	No cost	No cost	N.A.	N.A.	N.A.	N.A.	N.A.

► Product Information continued on next page

Guest Seating

Wishbone Chairs CH24

► **Product Information continued from previous page**

Specification Information

Wood Species/Finish Number Matrix

Wood Species	Finish Number:							
	Soap	Lacquer	Oil	White Oil	CHS Color	Black Painted Ash	Black Painted Oak	CHS Soft Matte
Beech	3733	3745	3753	N.A.	3228, 3229, 3236, 3246, 3248, 3267, and 3269	N.A.	N.A.	3106, 3107, 3108, 3109, 3110, 3111
Ash	3603	3615	3605	3645	N.A.	3795	N.A.	
Oak	3225	3255	3227	3265	N.A.	N.A.	3235	
Smoked Oak	N.A.	N.A.	3233	N.A.	N.A.	N.A.	N.A.	
Walnut	N.A.	3325	3335	N.A.	N.A.	N.A.	N.A.	

Guest Seating

Carl Hansen;Chair-Wishbone,Mahogany,4 legs

Style Number	List Price
CH24MAHOGANY	\$1125

Options

Wood Frame	Mahogany Oil Mahogany Lacquer	No Cost +\$70
Leather Cushion Option	No Cushion Selection Leather Cushion Selection	No Cost +\$274
Leather Cushion	Loke Leather	No Cost

Carl Hansen;Chair-Wishbone,Teak,4 legs

Style Number	List Price
CH24TEAK	\$1125

Options

Wood Frame	Teak Oil	No Cost
Leather Cushion Option	No Cushion Selection Leather Cushion Selection	No Cost +\$274
Leather Cushion	Loke Leather	No Cost

Guest Seating

Dining Chair CH23



The CH23 dining chair from Carl Hansen, first introduced in 1950 by Hans J Wegner, features clean, organic contours and refined styling.

Overall: 19 4/5"D x 19 4/5"W x 30 8/9"H. Seat: 17 1/2"H.

Tip: Elegant cruciform cover caps in the backrest offer a sophisticated detail.

Tip: Not all finishes offered on every wood species; see matrix below.

Tip: Oak/walnut has an oak frame and walnut backrest.

Tip: Cover cap matches the frame finish, unless an oak/walnut finish is specified. Then the cover cap is a specifiable oak finish.

Tip: Black painted oak has a clearly visible wood structure.

Standard Includes

- Frame: solid hardwood
- Back: wood veneer to match frame, unless oak/walnut chair is selected (oak frame/walnut backrest)
- Cover cap: wood veneer to match frame, unless oak/walnut chair is selected:
 - 3225 Oak Soap
 - 3227 Oak Oil
 - 3235 Black Painted Oak
 - 3255 Oak Lacquer
 - 3265 Oak White Oil
- Hand-woven paper cord seat:
 - Black: P500
 - Natural: P501
- Design: Hans Wegner

Options

Frame Finish		
	Oak Price Group 01	No cost
	Oak Price Group 02	Price below
	Oak Price Group 03	Price below
	Oak Price Group 04	Price below
	Oak Price Group 05	Price below
	Oak Walnut Price Group 01	Price below
	Oak Walnut Price Group 02	Price below
	Walnut Price Group 01	Price below
	Walnut Price Group 02	Price below

Specification Information

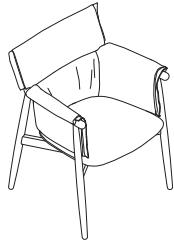
Style Number	Base Prices		Options (Add \$ to Base Price)										
	Paper cord seat:		Wood frame:						Oak/Walnut			Walnut	
	Natural	Black	Oak						Oil	Lacquer	Oil	Lacquer	
CH23	\$1527	\$1670	No cost	+\$143	+\$143	+\$143		+\$292	+\$231	+\$373	+\$834	+\$985	

Wood Species/Finish Number Matrix

Wood Species	Finish Number:				
	Soap	Lacquer	Oil	White Oil	Black Painted Oak
Oak	3225	3255	3227	3265	3235
Walnut	N.A.	3325	3335	N.A.	N.A.
Oak/Walnut	N.A.	3105	3103	N.A.	N.A.

Guest Seating

Embrace Chair CHE005 and CHE004



The Embrace chair was created in 2015 from a collaboration between Carl Hansen & Son and Austrian design trio EOOS. It provides superior comfort with soft, organic materials.

Overall: 21 2/3"D x 23 1/5"W x 33 1/2"H. Seat: 18 1/3"H

Tip: A soft, three-dimensional cushion functions as seat, back, and armrests, embracing the wooden structure and appearing to float within the frame.

Tip: Not all finishes offered on every wood species; see matrix below.

Tip: For Customer's Own Material or Leather, see necessary requirements, important processing instructions, and ordering information. See Coalesse Surface Materials Reference Guide.

Tip: Black painted oak has a clearly visible wood structure.

Tip: Cowhide is not available.

Standard Includes

- Frame: solid wood
- Seat/back: upholstered with flame retardant cold foam
- Edge, knit group 01:
 - 5KE1 White
 - 5KE2 Natural
 - 5KE3 Blue
 - 5KE4 Brown
 - 5KE5 Black
- Design: EOOS

Options

Option	Material / Finish	Price
Frame Finish	Oak Price Group 01	Prices below
	Oak Price Group 02	Prices below
	Oak Price Group 03	Prices below
	Oak Price Group 04	Prices below
	Oak Price Group 05	Prices below
	Walnut Price Group 01	Prices below
	Walnut Price Group 02	Prices below
Seat Back Finish	Customer's Own Leather	Prices below
	Fabric Customer's Own Material	Prices below
	Fabric Price Group 01	Prices below
	Fabric Price Group 02	Prices below
	Fabric Price Group 03	Prices below
	Fabric Price Group 04	Prices below
	Leather Price Group A	Prices below
Leather Price Group B	Prices below	
	Leather Price Group C	Prices below
Edge Finish	Knit 01	No cost

Specification Information

Style Number	Base Price	Options (Add \$ to Base Price)							
		Oak				Walnut			
		Soap	Oil	White Oil	Smoked Oil	Black Painted Oak	Lacquer	Oil	Lacquer
CHE005	\$2761.00	No cost	+\$98.00	+\$98.00	+\$98.00	+\$98.00	+\$196.00	+\$536.00	+\$634.00

▶ Product Information continued on next page

Guest Seating

Embrace Chair CHE005 and CHE004

▶ **Product Information continued from previous page**

Specification Information

Fabric Upcharges

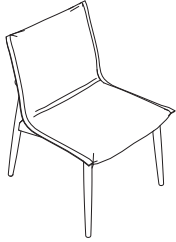
	Fabric:					Leather:			
	COM	Group 1	Group 2	Group 3	Group 4	COL	Loke Leather	Thor Leather	SIF Leather
Seat and back	No cost	+\$134.00	+\$366.00	+\$464.00	+\$688.00	+\$698.00	+\$848.00	+\$1126.00	+\$2020.00
COM/yds; 2 2/5 COL/sq ft; 60									

Wood Species/Finish Number Matrix

Wood Species	Finish Number:				
	Soap	Lacquer	Oil	White Oil	Black Painted Oak
Oak	3225	3255	3227	3265	3235
Walnut	N.A.	3325	3335	N.A.	N.A.

Guest Seating

Embrace Chair CHE005 and CHE004



Overall: 24"D, 22"W, 32 1/2"H.
Seat: 18 1/3"H

Tip: A soft, three-dimensional cushion functions as seat and back, embracing the wooden structure and appearing to float within the frame.

Tip: Not all finishes offered on every wood species; see matrix below.

Tip: For Customer's Own Material or Leather, see necessary requirements, important processing instructions, and ordering information. See Coalesse Surface Materials Reference Guide.

Tip: Black painted oak has a clearly visible wood structure.

Tip: Cowhide is not available.

Tip: The edging strip is available in five different colors: white, natural, blue, brown, and black.

Standard Includes

- Frame: solid wood
- Seat/back: upholstered with flame retardant cold foam
- Edge, knit group 01:
 - 5KE1 White
 - 5KE2 Natural
 - 5KE3 Blue
 - 5KE4 Brown
 - 5KE5 Black
- Design: EOOS

Options

Option	Material/Finish	Price
Frame Finish	Oak Price Group 01	Price below
	Oak Price Group 02	Price below
	Oak Price Group 03	Price below
	Oak Price Group 04	Price below
	Oak Price Group 05	Price below
	Walnut Price Group 01	Price below
	Walnut Price Group 02	Price below
Seat Back Finish	Customer's Own Leather	Price below
	Fabric Customer's Own Material	Price below
	Fabric Price Group 01	Price below
	Fabric Price Group 02	Price below
	Fabric Price Group 03	Price below
	Fabric Price Group 04	Price below
	Leather Price Group A	Price below
Leather Price Group B	Price below	
Leather Price Group C	Price below	
Edge Finish	Knit 01	No cost

Guest Seating

Specification Information

Style Number	Base Price	Options (Add \$ to Base Price)							
		Oak				Walnut			
		Soap	Oil	White Oil	Smoked Oil	Black Painted Oak	Lacquer	Oil	Lacquer
CHE004	\$2605.40	No cost	+\$97.12	+\$97.12	+\$97.12	+\$97.12	+\$194.20	+\$533.04	+\$631.20

▶ **Product Information continued on next page**

Guest Seating

Embrace Chair CHE005 and CHE004

► **Product Information continued from previous page**

Specification Information

Fabric Upcharges

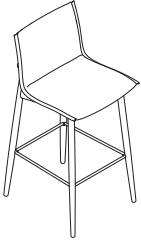
	Fabric:					Leather:			
	COM	Group 1	Group 2	Group 3	Group 4	COL	Loke Leather	Thor Leather	SIF Leather
Seat and back COM/yds; 1.42 x 1.42, COL/sq ft; 20	No cost	+\$168.40	+\$387.40	+\$481.40	+\$718.00	+\$718.00	+\$886.40	+\$1156.00	+\$1986.60

Wood Species/Finish Number Matrix

Wood Species	Finish Number:				
	Soap	Lacquer	Oil	White Oil	Black Painted Oak
Oak	3225	3255	3227	3265	3235
Walnut	N.A.	3325	3335	N.A.	N.A.

Guest Seating

Embrace Stools CHE006 and CHE007



Tip: Not all finishes offered on every wood species; see matrix below.

Tip: For Customer's Own Material or Leather, see necessary requirements, important processing instructions, and ordering information. See Coalesse Surface Materials Reference Guide.

Tip: Black painted oak has a clearly visible wood structure.

Tip: Cowhide is not available.

Tip: The edging strip is available in five different colors: white, natural, blue, brown, and black.

Standard Includes

- Frame: solid hardwood
- Seat/back: upholstered with flame retardant cold foam
- Edge, knit group 01:
 - 5KE1 White
 - 5KE2 Natural
 - 5KE3 Blue
 - 5KE4 Brown
 - 5KE5 Black
- Design: EOOS

Options

Option	Options	Price
Frame Finish	Oak Price Group 01	Prices below
	Oak Price Group 02	Prices below
	Oak Price Group 03	Prices below
	Oak Price Group 04	Prices below
	Oak Price Group 05	Prices below
	Smoked Oak Price Group 01	Prices below
	Walnut Price Group 01	Prices below
	Walnut Price Group 02	Prices below
Seat Back Finish	Customer's Own Leather	Prices below
	Fabric Customer's Own Material	Prices below
	Fabric Price Group 01	Prices below
	Fabric Price Group 02	Prices below
	Fabric Price Group 03	Prices below
	Fabric Price Group 04	Prices below
	Leather Price Group A	Prices below
Edge Finish	Knit 01	No cost
	Paint Price Group 01	No cost
	Polished Aluminum	No cost
Leather Price Group B	Leather Price Group B	Prices below
	Leather Price Group C	Prices below

Specification Information

Style Number	Base Price	Options (Add \$ to Base Price)							
		Oak				Walnut			
		Soap	Oil	White Oil	Smoked Oil	Black Painted Oak	Lacquer	Oil	Lacquer



Embrace Stool

Style Number	Base Price	Soap	Oil	White Oil	Smoked Oil	Black Painted Oak	Lacquer	Oil	Lacquer
CHE006	\$2275	No cost	+\$60	+\$60	+\$60	+\$60	+\$125	+\$445	+\$515

Overall: 21 1/2"D x 19 3/10"W x 41 3/10"H
Seat: 31"H

► Product Information continued on next page

Guest Seating

Embrace Stools CHE006 and CHE007

► Product Information continued from previous page

Specification Information

Style Number	Base Price	Options (Add \$ to Base Price)							
Wood frame:									
Oak					Walnut				
Soap	Oil	White Oil	Smoked Oil	Black Painted Oak	Lacquer	Oil	Lacquer		



Embrace Low Stool

CHE007	\$2275	No cost	+\$60	+\$60	+\$60	+\$60	+\$125	+\$445	+\$515
Overall: 20 7/10"D x 19 3/10"W x 38"H									
Seat: 27 4/5"H									

Fabric Upcharges

	Fabric:					Leather:			
	COM	Group 1	Group 2	Group 3	Group 4	COL	Loke Leather	Thor Leather	SIF Leather
Seat and back	No cost	No cost	+\$10	+\$30	+\$55	-\$25	+\$75	+\$295	+\$540
COM/yds; 1 1/10 COL/sq ft; 18									

Wood Species/Finish Number Matrix

Wood Species	Finish Number:					
	Soap	Lacquer	Oil	White Oil	Smoked Oil	Black Painted Oak
Oak	3225	3255	3227	3265	3233	3235
Walnut	N.A.	3325	3335	N.A.	N.A.	N.A.

Guest Seating

Barstools CH56 and CH58

The CH56 and CH58 barstools, available in solid wood, leather, and stainless steel, were designed by Hans J. Wegner in 1985. These barstools are simple, practical, and superbly crafted for great comfort.

Tip: Not all finishes offered on every wood species; see matrix below.

Tip: Black painted oak has a clearly visible wood structure.

Tip: For Customer's Own Material or Leather, see necessary requirements, important processing instructions, and ordering information. See Coalesse Surface Materials Reference Guide.

Tip: Cowhide is not available.

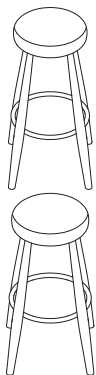
Standard Includes

- Frame: solid hardwood
- Seat: leather upholstered with flame retardant cold foam
- Ring: stainless steel
- Design: Hans Wegner

Options

Option	Price
Frame Finish	
Oak Price Group 01	Price below
Oak Price Group 02	Price below
Oak Price Group 03	Price below
Oak Price Group 04	Price below
Oak Price Group 05	Price below
Smoked Oak Price Group 01	Price below
Walnut Price Group 01	Price below
Walnut Price Group 02	Price below
Seat Finish	
Customer's Own Leather	Price below
Leather Price Group A	Price below
Leather Price Group B	Price below
Leather Price Group C	Price below

Specification Information



Style Number	Base Price	Options (Add \$ to Base Price)								
		Wood frame:				Walnut				
		Oak		White Oil		Smoked Oil	Black Painted Oak	Lacquer	Lacquer	
CH56	\$1881	No cost	+\$59	+\$59	N.A.	+\$59	+\$110	+\$487	+\$537	
Overall: 15 1/3"W x 29 8/9"H Seat: 14 1/5"W										
CH58	\$1881	No cost	+\$59	+\$59	+\$59	+\$59	+\$110	+\$487	+\$537	
Overall: 14 1/5"W x 26 4/5"H Seat: 14 1/5"W										
Leather Upcharges										
		COL	Loke Leather	Thor Leather	SIF Leather					
Seat	No cost	+\$40	+\$118	+\$505						
COL/sq ft; 8										

▶ **Product Information continued on next page**

Guest Seating

Barstools CH56 and CH58

► Product Information continued from previous page

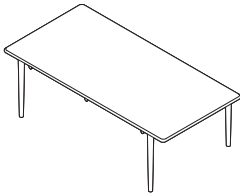
Specification Information

Wood Species/Finish Number Matrix

Wood Species	Finish Number:					
	Soap	Lacquer	Oil	White Oil	Smoked Oil	Black Painted Oak
Oak	3225	3255	3227	3265	3233	3235
Walnut	N.A.	3325	3335	N.A.	N.A.	N.A.

Collaborative and Conference Tables

Dining Table CH327



Overall: 75"L x 37 1/2"W x 28 1/2"H

Standard Includes

- Table: wood
- Design: Hans Wegner

Options

Wood Frame		
	Oak Soap	No cost
	Oak Walnut Lacquer	No cost
	Oak Walnut Oil	No cost
	Walnut Lacquer	No cost
	Beech Lacquer	Price below
	Beech Oil	Price below
	Oak Lacquer	Price below
	Oak Oil	Price below
	Oak White Oil	Price below
	Oil Over Walnut	Price below
	Smoked Oak Oil	Price below

Specification Information

Style Number	Base Price	Options (Add \$ to Base Price)				
		Soap	Lacquer	Oil	Smoked Oil	White Oil
CH327BEECH	\$8392	No cost	+\$663	+\$663	N.A.	N.A.
CH327OAK	\$9788	No cost	+\$775	+\$775	+\$775	+\$775
CH327OAKWAL	\$12,242	N.A.	No cost	No cost	N.A.	N.A.
CH327WALNUT	\$12,563	N.A.	No cost	No cost	N.A.	N.A.

Wood Species/Finish Number Matrix

Wood Species	Finish Number:				
	Soap	Lacquer	Oil	Smoked Oil	White Oil
Beech	3733	3745	3753	N.A.	N.A.
Ash	3603	3615	3605	N.A.	3645
Oak	3225	3255	3227	3233	3265
Oak Walnut	N.A.	3105	3103	N.A.	N.A.
Walnut	N.A.	3325	3335	N.A.	N.A.

Collaborative and Conference Tables

Embrace Dining Table (CH20 Series)

Overall: 29 1/10"H. Diameter:
31 1/3", 43 1/3", 54 9/10"

Tip: Not all finishes offered on every wood species; see matrix below.

Tip: Crafted from three components, the tables have a solid wooden base with either a black or white laminate top, and a steel wire structure as the base.

Tip: Black painted oak has a clearly visible wood structure.

Standard Includes

- Base: solid wood
- Frame: steel wire
- Top: laminate

Options

Top Finish	Laminate HPL Price Group 01	No cost
Frame Finish	Paint Price Group 01	No cost
	Polished Aluminum	No cost
Base Finish	Oak Price Group 01	Price below
	Oak Price Group 02	Price below
	Oak Price Group 03	Price below
	Oak Price Group 04	Price below
	Oak Price Group 05	Price below
	Walnut Price Group 01	Price below
	Walnut Price Group 02	Price below

Specification Information

Style Number	Base Price	Options (Add \$ to Base Price)						
		Wood base: Oak				Walnut		
		Soap	Oil	White Oil	Black Painted Oak	Lacquer	Oil	Lacquer



31 1/3" Round Dining Table

CHE02031	\$3548.40	No cost	+\$262.40	+\$262.40	+\$262.40	+\$331.60	+\$762.40	+\$837.80
-----------------	-----------	---------	-----------	-----------	-----------	-----------	-----------	-----------

Overall: 31 1/3"Dia. x 29 1/10"H



43 1/3" Round Dining Table

CHE02043	\$4816.40	No cost	+\$243.80	+\$918.40	+\$243.80	+\$362.60	+\$756.20	+\$861.60
-----------------	-----------	---------	-----------	-----------	-----------	-----------	-----------	-----------

Overall: 43 1/3"Dia. x 29 1/10"H



54 9/10" Round Dining Table

CHE02054	\$5440.60	No cost	+\$256.20	+\$256.20	+\$256.20	+\$399.80	+\$749.00	+\$912.20
-----------------	-----------	---------	-----------	-----------	-----------	-----------	-----------	-----------

Overall: 54 9/10"Dia. x 29 1/10"H

Wood Species/Finish Number Matrix

Wood Species	Finish Number:				
	Soap	Lacquer	Oil	White Oil	Black Painted Oak
Oak	3225	3255	3227	3265	3235
Walnut	N.A.	3325	3335	N.A.	N.A.

Occasional Tables

Coffee Tables CH008

The CH008 coffee table, designed by Hans Wegner, is simple and elegant. Solid wood is used for all surfaces, including the support elements. It is available in oak, walnut, or beech and is ideal alongside lounges and easy chairs, or as the centerpiece for a gathering of chairs.

Tip: Finish number 3235 is black painted oak.

Standard Includes

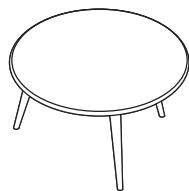
- Table: wood
- Design: Hans Wegner

Options

Table Height Options	1733hght	No cost
	2087hght	No cost
Wood Frame	Oak Soap	No cost
	Walnut Lacquer	No cost
	Oak Black	Price below
	Oak Lacquer	Price below
	Oak Oil	Price below
	Oak White Oil	Price below
	Oil Over Walnut	Price below
	Smoked Oak Oil	Price below

Specification Information

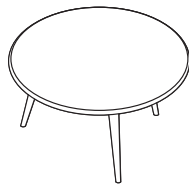
Style Number	Base Price	Options (Add \$ to Base Price)					
		Soap	Lacquer	Oil	White Oil	Smoked Oil	Black Painted Oak



30" Round Coffee Table

CH008078OAK	\$3315	No cost	+\$343	+\$343	+\$343	+\$343	+\$343
CH008078WAL	\$4992	N.A.	No cost	No cost	N.A.	N.A.	N.A.

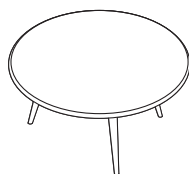
Overall: 30"Dia. x 17 3/8"H or 20 15/16"H



34 1/2" Round Coffee Table

CH008088OAK	\$3516	No cost	+\$365	+\$365	+\$365	+\$365	+\$365
CH008088WAL	\$5536	N.A.	No cost	No cost	N.A.	N.A.	N.A.

Overall: 34 1/2"Dia. x 17 3/8"H or 20 15/16"H



39 1/4" Round Coffee Table

CH0080100OAK	\$4159	No cost	+\$433	+\$433	+\$433	+\$433	+\$433
CH0080100WAL	\$6632	N.A.	No cost	No cost	N.A.	N.A.	N.A.

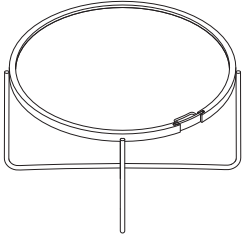
Overall: 39 1/4"Dia. x 17 3/8"H or 20 15/16"H

Wood Species/Finish Number Matrix

Wood Species	Finish Number:					
	Soap	Lacquer	Oil	White Oil	Smoked Oil	Black Painted Oak
Oak	3225	3255	3227	3265	3233	3235
Walnut	N.A.	3325	3335	N.A.	N.A.	N.A.

Occasional Tables

Tray Table CH417



The CH417 tray table by Hans J. Wegner combines two parts; a reversible round tray and a collapsible base- into a smart, easy to store solution that is light and sturdy, as well as practical and elegant.

Overall: 24 2/5"W x 14"W

Tip: Side A will be white laminate and side B black laminate.

Tip: The edge of the table is always oak oil and the handle is made in smoked oak oil, regardless of table top material selection.

Tip: The table top is reversible and can be used as a tray.

Standard Includes

- Top: laminate (side A white laminate, side B black laminate)
- Base: stainless steel
- Edge: solid wood in oak oil finish
- Design: Hans Wegner

Options

Top Surface A Finish	Laminate HPL Price Group 01	No cost
Top Surface B Finish	Laminate HPL	No cost

Specification Information

Style Number Base Price

Laminate Top:

White/Black
Laminate

CH417 \$1770

Occasional Tables

Embrace Coffee Table (CH21 Series)

Overall: 18 9/10"H x 18 9/10" Dia. 14 9/10"H x 31 1/2" Dia.

Tip: Not all finishes offered on every wood species; see matrix below.

Tip: Crafted from three components, the tables have a solid wooden base with either a black or white laminate top, and a steel wire structure as the base.

Tip: Black painted oak has a clearly visible wood structure.

Standard Includes

- Base: solid wood
- Frame: steel wire
- Top: laminate

Options

Option	Price Group	Cost
Top Finish	Oak Price Group 01	No cost
	Oak Price Group 02	No cost
	Oak Price Group 03	No cost
	Oak Price Group 04	No cost
	Oak Price Group 05	No cost
	Walnut Price Group 01	No cost
	Walnut Price Group 02	No cost
Frame Finish	Paint Price Group 01	No cost
	Polished Aluminum	No cost
Base Finish	Oak Price Group 01	Price below
	Oak Price Group 02	Price below
	Oak Price Group 03	Price below
	Oak Price Group 04	Price below
	Oak Price Group 05	Price below
	Walnut Price Group 01	Price below
	Walnut Price Group 02	Price below

Specification Information

Style Number	Base Price	Options (Add \$ to Base Price)						
		Wood base:				Walnut		
		Soap	Oil	White Oil	Black Painted Oak	Lacquer	Oil	Lacquer



18 9/10" Occasional Table

CHE02118	\$1892.20	No cost	+\$180.80	+\$180.80	+\$180.80	+\$449.40	+\$543.40	+\$804.80
Overall: 31 1/3"Dia. x 29 1/10"H								



31 1/2" Occasional Table

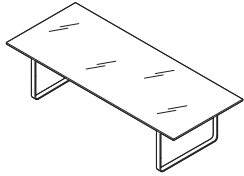
CHE02131	\$3412.80	No cost	+\$148.80	+\$148.80	+\$148.80	+\$362.60	+\$1381.20	+\$1618.80
Overall: 43 1/3"Dia. x 29 1/10"H								

Wood Species/Finish Number Matrix

Wood Species	Finish Number:				
	Soap	Lacquer	Oil	White Oil	Black Painted Oak
Oak	3225	3255	3227	3265	3235
Walnut	N.A.	3325	3335	N.A.	N.A.

Occasional Tables

CH108 Glass Coffee Table (CH100 Series)



The CH108 glass coffee table, designed by Hans Wegner, features heavy, tempered glass with a stainless steel frame in an etched chrome finish. It is a statement piece that fits well with the CH100 Series lounge seating.

Overall: 29 1/2"D x 67"W x 16 1/2"H

Standard Includes

- Frame and hardware: 4862 Stainless Steel
- Top: 6513 Clear glass
- Design: Hans Wegner

Specification Information

Style Number	Price
CH108	\$7940

Surface Materials

Specification Information

Note: Coalesse reserves the right to reject fabrics when necessary if the quality or construction is not satisfactory for intended use. For most up to date information on fabric usage please check the fabric database on www.coalesse.com.

Carl Hansen Leather Palette

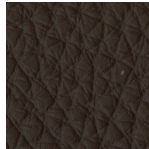
Loke



5072
Loke 7210



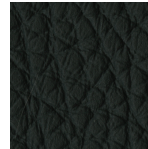
5073
Loke 7050



5074
Loke 7270



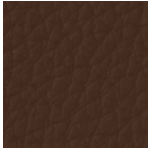
5075
Loke 7170



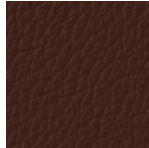
5076
Loke 7150



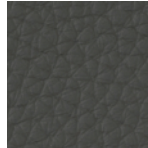
5077
Loke 7160



507C
Loke 7060



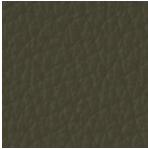
507D
Loke 7100



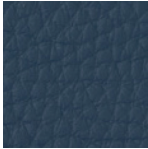
507E
Loke 7110



507F
Loke 7140



507G
Loke 7240



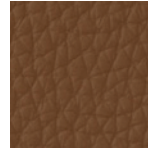
507H
Loke 7310



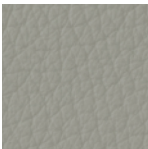
507J
Loke 7732



507K
Loke 7744



507L
Loke 7748



507M
Loke 7763



507N
Loke 7766

► **Product Information continued on next page**

Surface Materials

► **Product Information continued from previous page**

Specification Information

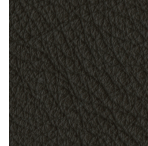
Thor



5394
Thor 300



5395
Thor 307



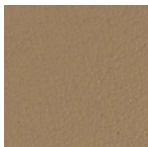
5396
Thor 306



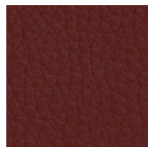
5398
Thor 301



5399
Thor 390



539A
Thor 325



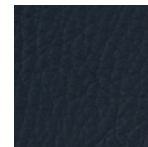
539C
Thor 332



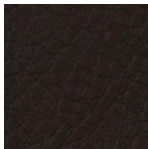
539E
Thor 359



539F
Thor 310

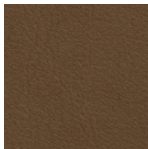


539G
Thor 350

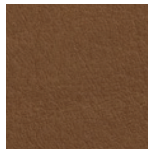


539H
Thor 377

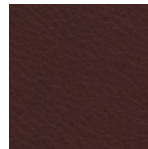
SIF



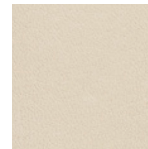
507P
SIF 91



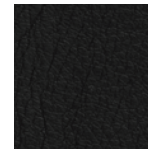
507Q
SIF 95



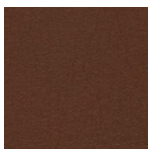
507R
SIF 93



507T
SIF 90



507U
SIF 98



507Y
SIF 92

► **Product Information continued on next page**

Surface Materials

► Product Information continued from previous page

Specification Information

Cowhides

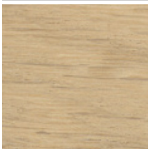


507W
SIF Brown/
White

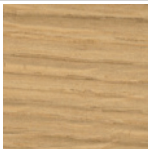


508D
SIF Black/
White

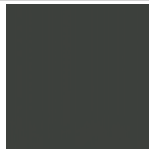
Carl Hansen Wood



Oak Soap
3225



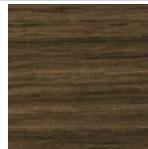
Oak Oil
3227



Anthracite Gray
3228



Red Brown
3229



Smoked Oak Oil
3233



Black Painted Oak
3235



Olive Green
3236



Natural White
3246



Orange Red
3248



Oak Lacquer
3255

► Product Information continued on next page

Surface Materials

► **Product Information continued from previous page**

Specification Information



Oak White Oil
3265



Silver Gray
3267



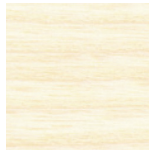
Black
3269



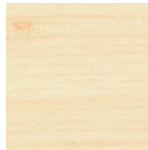
Walnut Lacquer
3325



Walnut Oil
3335



Ash Soap
3603



Ash Oil
3605



Ash Lacquer
3615



Ash White Oil
3645



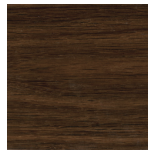
Beech Soap
3733



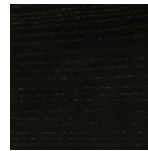
Beech Lacquer
3745



Beech Oil
3753

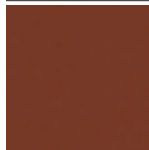


Smoked Oak
Lacquer
3783



Ash Black
3795

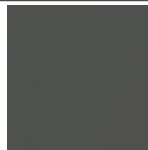
Carl Hansen Soft Matte Paint



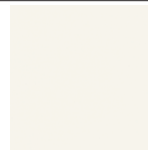
Soft Red
3106



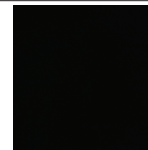
Soft Green
3107



Soft Gray
3108



Soft White
3109



Soft Black
3110



Soft Blue
3111

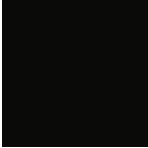
► **Product Information continued on next page**

Surface Materials

► **Product Information continued from previous page**

Specification Information

Carl Hansen Base Finishes

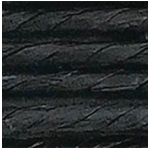


Black Powder Coat
4860



Stainless Steel
4862

Papercord

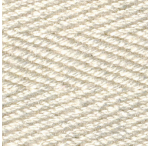


Black
P500

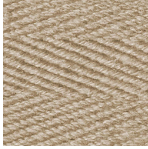


Natural
P501

Embrace Edging Strip



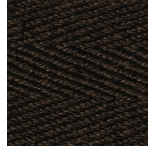
White
5KE1



Natural
5KE2



Blue
5KE3



Brown
5KE4



Black
5KE5

For Carl Hansen Wood Finishes:

Oil/White Pigmented Oil:

Wipe clean with damp cloth. Wood should be treated twice per year on all surfaces, or needed to remove scratches and stubborn stains.

Stain/Varnish Clear lacquer, CHS Color:

Wipe clean with damp cloth.

Vinyl:

Under normal use, clean with soft cloth dampened with mild soap solution. For stubborn stains and spills, a sponge or soft brush may be used with mild non-abrasive cleaner.

Transolid/Solid Surface:

Clean regularly with mild soap and water. Dry with a soft cloth.

Tables should be inspected and maintained regularly by tightening screws and bolts, inspecting casters and glides for damage, and inspecting all moving parts for damage and wear.

EMU Rio

Outdoor Chairs

Tip: Chair and armchair stack eight high. Lounge chair and barstool stack four high.

The EMU Rio R50 Series is a modern refresh of a design icon for today's outdoor settings. Solid yet light, affordable yet enduring, the classic mesh and rod design features a unique folding gesture with a deeply drawn seat for modern comfort.

Standard Includes

- Frame: hand crafted woven steel mesh
- Finish: outdoor grade powder coat paint
- Glides: plastic
- Design: Anton Cristell and Emanuel Gargano

Specification Information

Dimensions			Style	Quantity	Base Price
D	W	H	Number		

Dining Chair

24.2"	21"	32.8"	EMUCO2790	4	\$1543
Seat height: 17.7"					
Weight: 12.3 lb					



Arm Chair

23.2"	21"	32.8"	EMUCO2791	4	\$1735
Seat height: 17.7"					
Weight: 13.7 lb					



Lounge Chair

27.5"	27.1"	29.9"	EMUCO2792	2	\$1220
Seat height: 15"					
Weight: 16.5 lb					



Barstool

16"	21.6"	37.7"	EMUCO2793	4	\$2221
Seat height: 29.1"					
Weight: 16 lb					



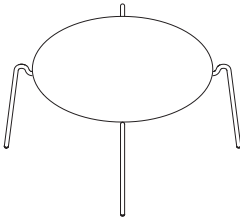
Swing Lounge Chair

28.3"	26.3"	30.3"	EMUCO2795	1	\$813
Seat height: 15.7"					
Weight: 17.6 lb					



EMU Rio

Outdoor Tables



The EMU Rio R50 Series is a modern refresh of a design icon for today's outdoor settings. Solid yet light, affordable yet enduring, the classic mesh and rod design features a unique folding gesture with a deeply drawn seat for modern comfort.

Standard Includes

- Frame: painted steel with a tubular steel frame
- Design: Anton Cristell and Emanuel Gargano

Specification Information

Dimensions			Style	Price
D	W	H	Number	

Coffee Table

40.9"	40.9"	16.5"	EMUCO2797	\$569
-------	-------	-------	------------------	-------

Weight: 21.6 lb



EMU Heaven

Seating

Metal mesh drapes like fabric on the EMU Heaven collection through a unique process of weaving and welding.

Tip: All chairs can stack four high.

Tip: COM outdoor fabric must be an approved outdoor fabric.

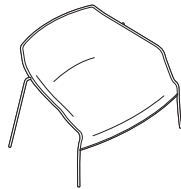
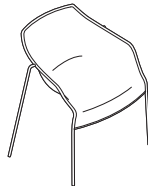
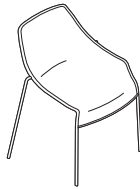
Tip: Additional powder coat paint finishes are available with an upcharge, as shown at right.

Standard Includes

- Frame, hand crafted woven steel mesh:
 - 7234 EMU Black
 - 7271 EMU White
- Finish: outdoor grade powder coat paint
- Glides: nylon
- Design: Jean-Marie Massaud

Specification Information

Dimensions			Style Number	Quantity	Base Price	Options (Add \$ to Base Price) Other Emu paint (cost per pack)
D	W	H				
Chair						
23 1/4"	24 1/2"	31"	CO2485	2	\$1459	+\$198
Seat height: 17 3/4"						
Seat depth: 16 1/8"						
Arm Chair						
24"	27 1/4"	31"	CO2486	2	\$1670	+\$198
Seat height: 17 3/4"						
Seat depth: 16 1/8"						
Arm height: 26 3/4"						
Lounge Chair						
30 3/4"	37"	27 1/4"	CO2487	2	\$2802	+\$263
Seat height: 13 3/4"						
Seat depth: 18 1/2"						
Arm height: 20 1/2"						



EMU Heaven

Seating

Metal mesh drapes like fabric on the EMU Heaven collection through a unique process of weaving and welding.

Tip: All cushions come in quantity of one.

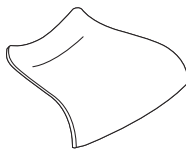
Tip: If a back cushion is specified, a seat cushion must also be specified. The back cushion is not functional without the seat cushion.

Tip: Lounge pillow is for use with Heaven and Round Lounge chairs.

Standard Includes

- Cushions: fabric
- Design: Jean-Marie Massaud

Specification Information



Style Number

Chair Cushions

Outdoor Cushion	Fabric Grades:	Base Price
CO2485C	COM	\$398
	Fabric Grade 6	N.A.
	Fabric Grade 7	N.A.
	Fabric Grade 8	N.A.
	Fabric Grade 9	N.A.
	Fabric Grade 10	N.A.
	Fabric Grade 11	\$421
	Fabric Grade 12	N.A.
	Fabric Grade 13	\$431
	Fabric Grade 14	\$476
	COL	N.A.
	Leather Grade C	N.A.
	Leather Grade E	N.A.

Indoor Cushion

CO2485B	COM	\$398
	Fabric Grade 6	\$378
	Fabric Grade 7	\$383
	Fabric Grade 8	\$396
	Fabric Grade 9	\$429
	Fabric Grade 10	\$452
	Fabric Grade 11	\$479
	Fabric Grade 12	\$494
	Fabric Grade 13	\$528
	Fabric Grade 14	\$572
	COL	\$555
	Leather Grade C	\$853
	Leather Grade E	\$915
	Acrylic Backer (Add \$ to Base Price)	+\$20

20 3/4"D x 14 1/2"W x 19"W x 3/4"H
COM/yds; 3/4 COL/sq ft; 14

► **Product Information continued on next page**

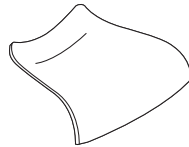
EMU Heaven

Seating

► **Product Information continued from previous page**

Specification Information

Style Number



Arm Chair Cushions

Outdoor Cushion	Fabric Grades:	Base Price
CO2486C	COM	\$405
	Fabric Grade 6	N.A.
	Fabric Grade 7	N.A.
	Fabric Grade 8	N.A.
	Fabric Grade 9	N.A.
	Fabric Grade 10	N.A.
	Fabric Grade 11	\$460
	Fabric Grade 12	N.A.
	Fabric Grade 13	\$475
	Fabric Grade 14	\$538
	COL	N.A.
	Leather Grade C	N.A.
	Leather Grade E	N.A.
	Indoor Cushion	
CO2486B	COM	\$405
	Fabric Grade 6	\$395
	Fabric Grade 7	\$406
	Fabric Grade 8	\$418
	Fabric Grade 9	\$467
	Fabric Grade 10	\$496
	Fabric Grade 11	\$530
	Fabric Grade 12	\$554
	Fabric Grade 13	\$598
	Fabric Grade 14	\$657
	COL	\$562
	Leather Grade C	\$961
	Leather Grade E	\$1041
	Acrylic Backer (Add \$ to Base Price)	+\$20

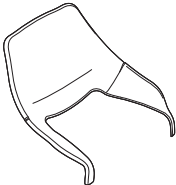
20 3/4"D x 23 3/4"W x 3/4"H

COM/yds; 1, COL/sq ft; 18

► **Product Information continued on next page**

► **Product Information continued from previous page**

Specification Information



Style Number

Chair Back Cushions

Outdoor Cushion	Fabric Grades:	Base Price
CO2480C	COM	\$503
	Fabric Grade 6	N.A.
	Fabric Grade 7	N.A.
	Fabric Grade 8	N.A.
	Fabric Grade 9	N.A.
	Fabric Grade 10	N.A.
	Fabric Grade 11	\$575
	Fabric Grade 12	N.A.
	Fabric Grade 13	\$593
	Fabric Grade 14	\$667
	COL	N.A.
	Leather Grade C	N.A.
	Leather Grade E	N.A.

Indoor Cushion

CO2480B	COM	\$444
	Fabric Grade 6	\$503
	Fabric Grade 7	\$512
	Fabric Grade 8	\$532
	Fabric Grade 9	\$588
	Fabric Grade 10	\$628
	Fabric Grade 11	\$670
	Fabric Grade 12	\$700
	Fabric Grade 13	\$755
	Fabric Grade 14	\$828
	COL	\$657
	Leather Grade C	\$1300
	Leather Grade E	\$1425
	Acrylic Backer (Add \$ to Base Price)	+\$12

Overall: 3/4"D x 22"W x 15 1/2"H
COM/yds; 1 1/4 COL/sq ft; 28

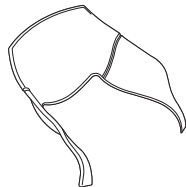
► **Product Information continued on next page**

EMU Heaven

Seating

► **Product Information continued from previous page**

Specification Information



Style Number

Arm Chair Back Cushions

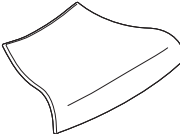
Outdoor Cushion	Fabric Grades:	Base Price
CO2481C	COM	\$518
	Fabric Grade 6	N.A.
	Fabric Grade 7	N.A.
	Fabric Grade 8	N.A.
	Fabric Grade 9	N.A.
	Fabric Grade 10	N.A.
	Fabric Grade 11	\$617
	Fabric Grade 12	N.A.
	Fabric Grade 13	\$639
	Fabric Grade 14	\$733
	COL	N.A.
	Leather Grade C	N.A.
	Leather Grade E	N.A.
	Indoor Cushion	
CO2481B	COM	\$450
	Fabric Grade 6	\$518
	Fabric Grade 7	\$534
	Fabric Grade 8	\$556
	Fabric Grade 9	\$626
	Fabric Grade 10	\$671
	Fabric Grade 11	\$720
	Fabric Grade 12	\$760
	Fabric Grade 13	\$822
	Fabric Grade 14	\$909
	COL	\$663
	Leather Grade C	\$1445
	Leather Grade E	\$1594
	Acrylic Backer (Add \$ to Base Price)	+\$20

Overall: 3/4"D x 28"W x 17 1/2"H
 COM/yds; 1 1/2 COL/sq ft; 33

► **Product Information continued on next page**

▶ Product Information continued from previous page

Specification Information



Style Number

Lounge Cushions

Outdoor Cushion	Fabric Grades:	Base Price
CO2487C	COM	\$527
	Fabric Grade 6	N.A.
	Fabric Grade 7	N.A.
	Fabric Grade 8	N.A.
	Fabric Grade 9	N.A.
	Fabric Grade 10	N.A.
	Fabric Grade 11	\$626
	Fabric Grade 12	N.A.
	Fabric Grade 13	\$648
	Fabric Grade 14	\$742
	COL	N.A.
	Leather Grade C	N.A.
	Leather Grade E	N.A.

Indoor Cushion

CO2487B	COM	\$459
	Fabric Grade 6	\$527
	Fabric Grade 7	\$543
	Fabric Grade 8	\$565
	Fabric Grade 9	\$635
	Fabric Grade 10	\$680
	Fabric Grade 11	\$729
	Fabric Grade 12	\$769
	Fabric Grade 13	\$831
	Fabric Grade 14	\$918
	COL	\$672
	Leather Grade C	\$1454
	Leather Grade E	\$1603
	Acrylic Backer (Add \$ to Base Price)	+\$20

Overall: 3/4"D x 34"W x 25"H
COM/yds; 1 1/2 COL/sq ft; 33

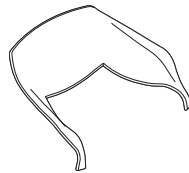
▶ Product Information continued on next page

EMU Heaven

Seating

► **Product Information continued from previous page**

Specification Information



Style Number

Lounge Back Cushions

Outdoor Cushion	Fabric Grades:	Base Price
CO2489C	COM	\$688
	Fabric Grade 6	N.A.
	Fabric Grade 7	N.A.
	Fabric Grade 8	N.A.
	Fabric Grade 9	N.A.
	Fabric Grade 10	N.A.
	Fabric Grade 11	\$837
	Fabric Grade 12	N.A.
	Fabric Grade 13	\$873
	Fabric Grade 14	\$1023
	COL	N.A.
	Leather Grade C	N.A.
	Leather Grade E	N.A.

Indoor Cushion

CO2489B	COM	\$570
	Fabric Grade 6	\$688
	Fabric Grade 7	\$709
	Fabric Grade 8	\$747
	Fabric Grade 9	\$861
	Fabric Grade 10	\$937
	Fabric Grade 11	\$1022
	Fabric Grade 12	\$1084
	Fabric Grade 13	\$1188
	Fabric Grade 14	\$1337
	COL	\$783
	Leather Grade C	\$2130
	Leather Grade E	\$2375
	Acrylic Backer (Add \$ to Base Price)	+\$33

Overall: 3/4"D x 34"W x 17 1/2"H

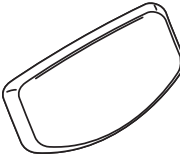
COM/yds; 2 1/2 COL/sq ft; 55

► **Product Information continued on next page**

► **Product Information continued from previous page**

Specification Information

Style Number



Lounge Pillows

Outdoor Pillow	Fabric Grades:	Base Price
CO2488C	COM	\$299
	Fabric Grade 6	N.A.
	Fabric Grade 7	N.A.
	Fabric Grade 8	N.A.
	Fabric Grade 9	N.A.
	Fabric Grade 10	N.A.
	Fabric Grade 11	\$322
	Fabric Grade 12	N.A.
	Fabric Grade 13	\$332
	Fabric Grade 14	\$377
	COL	N.A.
	Leather Grade C	N.A.
	Leather Grade E	N.A.

Indoor Cushion

CO2488B	COM	\$243
	Fabric Grade 6	\$279
	Fabric Grade 7	\$284
	Fabric Grade 8	\$297
	Fabric Grade 9	\$330
	Fabric Grade 10	\$353
	Fabric Grade 11	\$380
	Fabric Grade 12	\$395
	Fabric Grade 13	\$429
	Fabric Grade 14	\$473
	COL	\$456
	Leather Grade C	\$818
	Leather Grade E	\$891
	Acrylic Backer (Add \$ to Base Price)	+\$7

Overall: 4 1/4"D x 17 1/4"W x 10 1/2"H
COM/yds; 3/4 COL/sq ft; 17

EMU Heaven

Seating

Metal mesh drapes like fabric on the EMU Heaven collection through a unique process of weaving and welding.

Tip: **CO2495** pouf must be ordered with glass or cushion top, specified separately.

Tip: Cushions come in quantity of one.

Tip: Pouf/side table can be used as a seat when specified with the 2" upholstered cushion, and as a side table when specified with a 14" thick glass top.

Standard Includes

- Frame, hand crafted woven steel mesh:
 - 7234 EMU Black
 - 7271 EMU White
- Finish: outdoor grade powder coat paint
- Glides: nylon
- Design: Jean-Marie Massaud

Specification Information



Dimensions		Style	Quantity	Base Price	Options (Add \$ to Base Price):
Dia.	H	Number			Other Emu paint

Pouf/Side Table Base

17 3/4"	18 1/2"	CO2495	1	\$628	+\$166
---------	---------	---------------	---	-------	--------

Glass Top for use with Pouf

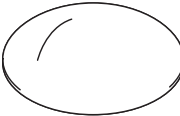
17 3/4"		CO2495V	1	\$293	N.A.
---------	--	----------------	---	-------	------

Standard Includes

- Cushions: fabric
- Design: Jean-Marie Massaud

Specification Information

Style Number



Pouf Cushions

Outdoor Cushion	Fabric Grades:	Base Price
CO2495C	COM	\$291
	Fabric Grade 6	N.A.
	Fabric Grade 7	N.A.
	Fabric Grade 8	N.A.
	Fabric Grade 9	N.A.
	Fabric Grade 10	N.A.
	Fabric Grade 11	\$314
	Fabric Grade 12	N.A.
	Fabric Grade 13	\$324
	Fabric Grade 14	\$369
	COL	N.A.
	Leather Grade C	N.A.
	Leather Grade E	N.A.

Indoor Cushion

CO2495B	COM	\$291
	Fabric Grade 6	\$271
	Fabric Grade 7	\$276
	Fabric Grade 8	\$289
	Fabric Grade 9	\$322
	Fabric Grade 10	\$345
	Fabric Grade 11	\$372
	Fabric Grade 12	\$387
	Fabric Grade 13	\$421
	Fabric Grade 14	\$465
	COL	\$448
	Leather Grade C	\$810
	Leather Grade E	\$883
	Acrylic Backer (Add \$ to Base Price)	+\$7

18" Dia. x 2"H
COM/yds; 3/4 COL/sq ft; 14

EMU Heaven

Vases

Metal mesh drapes like fabric on the EMU Heaven collection through a unique process of weaving and welding.

Tip: Large-scale vases hold foliage for growing or display. Vases are constructed of handcrafted, woven steel mesh with a convex steel base. They feature a removable white, plastic insert.

Standard Includes

- Vase: hand crafted woven steel mesh
- Finish: 7271 EMU White outdoor grade powder coat paint
- Planter insert: white plastic
- Design: Jean-Marie Massaud

Specification Information



Dimensions		Style	Price
Dia.	H	Number	

Low Vase

23 1/2"	40 1/2"	CO2498	\$2035
Planter insert dimensions: 36"H x 13 1/2"Dia			



High Vase

26 3/4"	64 1/4"	CO2497	\$2869
Planter insert dimensions: 33"H x 13 1/2"Dia			

EMU Heaven

Tables

EMU Heaven

Metal mesh drapes like fabric on the EMU Heaven collection through a unique process of weaving and welding.

Tip: Tables require glass top, specified separately.

Tip: Additional powder coat paint finishes are available with an upcharge, as shown at right.

Standard Includes

- Frame: interwoven steel rods
- Finish: 7271 EMU White outdoor grade powder coat paint
- Glides: nylon
- Top: tempered glass
- Design: Jean-Marie Massaud

Specification Information

Dimensions		Style	Base Price	Options (Add \$ to Base Price):
Dia.	H	Number		Other Emu paint

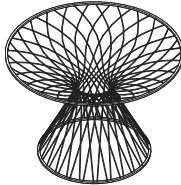
Round Table Bases

For use with 31 1/2" CO2493V Glass Top Below



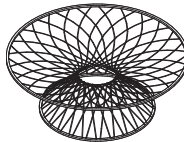
27 1/2"	29 1/2"	CO2493	\$1493	+\$263
Top of base: 27 1/2"Diameter				
Bottom of base: 17 3/4"Diameter				

For use with 47 1/4" CO2494V Glass Top Below



43 1/3"	29 1/2"	CO2494	\$3079	+\$263
Top of base: 43 1/3"Diameter				
Bottom of base: 27 1/2"Diameter				

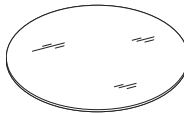
Low Table Base



43 1/3"	15 1/4"	CO2496	\$2314	+\$263
Top of base: 43 1/3"Diameter				
Bottom of base: 27 1/2"Diameter				

Glass Tops

For use with 27 1/2" CO2493 Round Table Base



31 1/2"	1/4"	CO2493V	\$578	N.A.
---------	------	----------------	-------	------

For use with 43 1/3" CO2494 Round or CO2496 Low Table Base



47 1/4"	1/4"	CO2494V	\$874	N.A.
---------	------	----------------	-------	------

EMU Round

Seating

The EMU Round collection is characterized by an elemental design of snug and comfortable shapes; representing a simple, contemporary design.

Tip: Stool and lounge stacks four high. Chair stacks eight high.

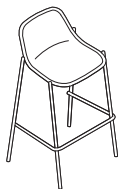
Tip: Additional powder coat paint finishes are available with an upcharge, as shown at right.

Standard Includes

- Frame- metal mesh seat, crafted using a deep drawing technique, welded to a tubular steel frame:
 - 4251 EMU Brown
 - 4257 Antique Iron
 - 7234 EMU Black
 - 7271 EMU White
- Finish: outdoor grade powder coat paint
- Glides: nylon
- Design: Christophe Pillet

Specification Information

Dimensions			Style Number	Quantity	Base Price	Options (Add \$ to Base Price) Other Emu paint (cost per pack)
D	W	H				



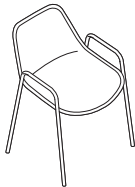
Stool

20 1/2"	22 3/4"	39 1/4"	CO2467	2	\$1559	+\$198
Seat height: 28"						



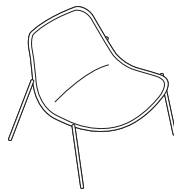
Armless Chair

23 1/4"	24 3/4"	32"	CO2465	4	\$1991	+\$263
Seat height: 17 3/4"						



Arm Chair

23 1/4"	24 3/4"	32"	CO2466	4	\$2183	+\$263
Seat height: 17 3/4"						
Arm height: 26"						



Lounge

34 1/4"	36 1/4"	33"	CO2469	2	\$2126	+\$263
Seat height: 15"						
Arm height: 22 1/8"						

EMU Round

Seating

The EMU Round collection is characterized by an elemental design of snug and comfortable shapes; representing a simple, contemporary design.

Tip: All cushions come in quantity of one.

Tip: Cushions are one piece with a slit to allow for water drainage.

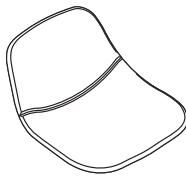
Tip: Chair cushion is for use on chair and arm chair.

Tip: Lounge pillow is for use with Heaven and Round Lounge chairs.

Standard Includes

- Cushions: fabric
- Design: Christophe Pillet

Specification Information



Style Number

Stool Cushions

Outdoor Cushion	Fabric Grades:	Base Price
CO2467C	COM	\$498
	Fabric Grade 6	N.A.
	Fabric Grade 7	N.A.
	Fabric Grade 8	N.A.
	Fabric Grade 9	N.A.
	Fabric Grade 10	N.A.
	Fabric Grade 11	\$572
	Fabric Grade 12	N.A.
	Fabric Grade 13	\$590
	Fabric Grade 14	\$667
	COL	N.A.
	Leather Grade C	N.A.
	Leather Grade E	N.A.

Indoor Cushion

CO2467B	COM	\$436
	Fabric Grade 6	\$498
	Fabric Grade 7	\$510
	Fabric Grade 8	\$529
	Fabric Grade 9	\$586
	Fabric Grade 10	\$629
	Fabric Grade 11	\$671
	Fabric Grade 12	\$704
	Fabric Grade 13	\$761
	Fabric Grade 14	\$838
	COL	\$660
	Leather Grade C	\$1330
	Leather Grade E	\$1461
	Acrylic Backer (Add \$ to Base Price)	+\$12

Overall: 3/4"D x 22"W x 28"H

COM/yds; 1 1/4 COL/sq ft; 28

► **Product Information continued on next page**

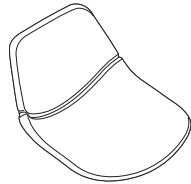
EMU Round

Seating

► Product Information continued from previous page

Specification Information

Style Number



Chair Cushions

Outdoor Cushion	Fabric Grades:	Base Price
CO2465C	COM	\$519
	Fabric Grade 6	N.A.
	Fabric Grade 7	N.A.
	Fabric Grade 8	N.A.
	Fabric Grade 9	N.A.
	Fabric Grade 10	N.A.
	Fabric Grade 11	\$613
	Fabric Grade 12	N.A.
	Fabric Grade 13	\$636
	Fabric Grade 14	\$731
	COL	N.A.
	Leather Grade C	N.A.
	Leather Grade E	N.A.
	Indoor Cushion	
CO2465B	COM	\$445
	Fabric Grade 6	\$519
	Fabric Grade 7	\$532
	Fabric Grade 8	\$556
	Fabric Grade 9	\$628
	Fabric Grade 10	\$675
	Fabric Grade 11	\$728
	Fabric Grade 12	\$769
	Fabric Grade 13	\$834
	Fabric Grade 14	\$924
	COL	\$669
	Leather Grade C	\$1485
	Leather Grade E	\$1640
	Acrylic Backer (Add \$ to Base Price)	+\$20

Overall: 3/4"D x 18"W x 22 1/2"H

COM/yds; 1 1/2 COL/sq ft; 33

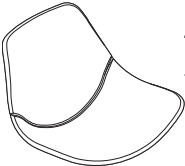
► Product Information continued on next page

EMU Round

Seating

► Product Information continued from previous page

Specification Information



Style Number

Lounge Cushions

Outdoor Cushion	Fabric Grades:	Base Price
CO2469C	COM	\$680
	Fabric Grade 6	N.A.
	Fabric Grade 7	N.A.
	Fabric Grade 8	N.A.
	Fabric Grade 9	N.A.
	Fabric Grade 10	N.A.
	Fabric Grade 11	\$829
	Fabric Grade 12	N.A.
	Fabric Grade 13	\$865
	Fabric Grade 14	\$1015
	COL	N.A.
	Leather Grade C	N.A.
	Leather Grade E	N.A.

Indoor Cushion

CO2469B	COM	\$588
	Fabric Grade 6	\$710
	Fabric Grade 7	\$732
	Fabric Grade 8	\$772
	Fabric Grade 9	\$893
	Fabric Grade 10	\$971
	Fabric Grade 11	\$1060
	Fabric Grade 12	\$1124
	Fabric Grade 13	\$1234
	Fabric Grade 14	\$1391
	COL	\$812
	Leather Grade C	\$2218
	Leather Grade E	\$2475
	Acrylic Backer (Add \$ to Base Price)	+\$33

Overall: 3/4"D x 34"W x 40"H
 COM/yds; 2 1/2 COL/sq ft; 55

► Product Information continued on next page

EMU Round

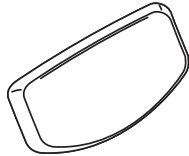
EMU Round

Seating

► **Product Information continued from previous page**

Specification Information

Style Number



Lounge Pillows

Outdoor Pillow	Fabric Grades:	Base Price
CO2488C	COM	\$299
	Fabric Grade 6	N.A.
	Fabric Grade 7	N.A.
	Fabric Grade 8	N.A.
	Fabric Grade 9	N.A.
	Fabric Grade 10	N.A.
	Fabric Grade 11	\$322
	Fabric Grade 12	N.A.
	Fabric Grade 13	\$332
	Fabric Grade 14	\$377
	COL	N.A.
	Leather Grade C	N.A.
	Leather Grade E	N.A.
	Indoor Pillow	
CO2488B	COM	\$243
	Fabric Grade 6	\$279
	Fabric Grade 7	\$284
	Fabric Grade 8	\$297
	Fabric Grade 9	\$330
	Fabric Grade 10	\$353
	Fabric Grade 11	\$380
	Fabric Grade 12	\$395
	Fabric Grade 13	\$429
	Fabric Grade 14	\$473
	COL	\$456
	Leather Grade C	\$818
	Leather Grade E	\$891
	Acrylic Backer (Add \$ to Base Price)	+\$7

Overall: 4 1/4"D x 17 1/4"W x 10 1/2"H
 COM/yds; 3/4 COL/sq ft; 17

EMU Round Tables

EMU Round

The EMU Round collection is characterized by an elemental design of snug and comfortable shapes; representing a simple, contemporary design.

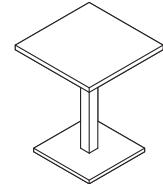
Tip: Additional powder coat paint finishes are available with an upcharge, as shown at right.

Standard Includes

- Frame- table top and base are sheet metal with tubular steel mountings:
 - 4251 EMU Brown
 - 4257 Antique Iron
 - 7234 EMU Black
 - 7271 EMU White
- Finish: outdoor grade powder coat paint
- Glides: nylon
- Design: Christophe Pillet

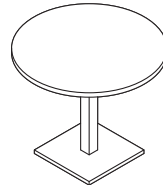
Specification Information

Dimensions			Style Number	Base Price	Options (Add \$ to Base Price) Other Emu paint (cost per pack)
D	W	H			



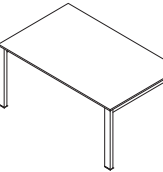
Square Tables

23 1/2"	23 1/2"	29 1/2"	CO2472	\$889	+\$166
27 1/2"	27 1/2"	29 1/2"	CO2471	\$1048	+\$166
31 1/2"	31 1/2"	29 1/2"	CO2473	\$1113	+\$166



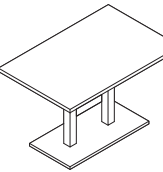
Round Table

35 1/2" dia.		29 1/2"	CO2470	\$1188	+\$166
--------------	--	---------	---------------	--------	--------



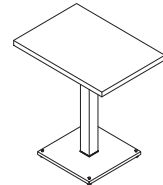
Extendable Dining Table

39 1/2"	65-105 1/2"	29 1/2"	CO2479	\$5376	+\$660
---------	-------------	---------	---------------	--------	--------



Rectangle Table

31 1/2"	47 1/2"	29 1/2"	CO2474	\$1734	+\$198
---------	---------	---------	---------------	--------	--------



Rectangular Table

19 1/2"	27 1/2"	29 1/2"	CO2476	\$1114	+\$166
---------	---------	---------	---------------	--------	--------

► Product Information continued on next page

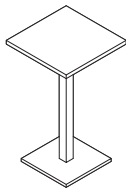
EMU Round

Tables

► **Product Information continued from previous page**

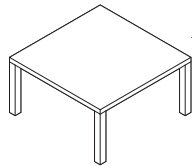
Specification Information

Dimensions			Style Number	Base Price	Options (Add \$ to Base Price) Other Emu paint (cost per pack)
D	W	H			



Counter Table

23 1/2"	23 1/2"	41 1/4"	C02475	\$1072	+\$166
---------	---------	---------	---------------	--------	--------



Side Table

31 1/2"	31 1/2"	16 1/2"	C02477	\$771	+\$166
---------	---------	---------	---------------	-------	--------

EMU Terramare

Seating

EMU Terramare

Simple cane and canvas furniture is reinvented for lounge and dining in the Terramare series (pronounced "Tara-mar-ay"). Generous shapes in die-cast aluminum, with leather details, and weather-resistant porcelain stoneware tabletops.

Tip: Back, arms, and seat finishes are defaulted based on frame finish selection. Cushion color must be specified with lounge chair, 2-seat lounge, and 3-seat lounge.

Tip: Cushions are standard on the lounge chair, 2-seat lounge, and 3-seat lounge.

Tip: It is recommended to keep Terramare seating in a covered area and protected from heavy rain.

Standard Includes

- Frame- powder coated painted aluminum:
 - 4251 EMU Brown
 - 7234 EMU Black
 - 7271 EMU White
 - 7294 EMU Grey/Green
 - 7297 EMU Corten
- Back on arm chair: EMU eco-leather defaulted by frame finish selection
- Seat on arm chair: EMU-tex defaulted by frame finish selection
- Back and arms on lounge chair, 2-seat lounge, or 3-seat lounge: EMU eco-leather defaulted by frame finish selection
- Cushions on lounge chair, 2-seat lounge, or 3-seat lounge: EMU basic or standard fabric
- Glides: nylon
- Design: Chiaramonte/Marin

Specification Information

Dimensions			Style	Quantity	Base
D	W	H	Number		Price

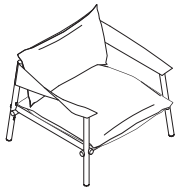
Arm Chair

21"	24"	31 1/4"	COEM4728	2	\$1990
Arm height: 26"					
Seat height: 18 1/2"					
Inside: 15 1/2"D 17 1/2"W 12 1/2"H					



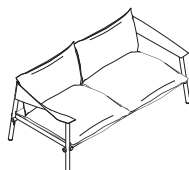
Lounge Chair

33 3/4"	37"	28 3/4"	COEM4729	1	\$4834
Arm height: 24 1/2"					
Seat height: 16 1/2"					
Inside: 25 3/4"D 29 1/2"W 12 1/2"H					



2-Seat Lounge

33 3/4"	69"	28 1/2"	COEM4730	1	\$7344
Arm height: 24 1/2"					
Seat height: 16 1/2"					
Inside: 25 3/4"D 61 3/4"W 12 1/2"H					



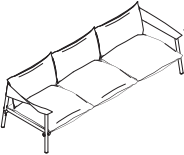
► Product Information continued on next page

EMU Terramare

Seating

► Product Information continued from previous page

Specification Information

	Dimensions			Style	Quantity	Base
	D	W	H	Number		Price
 <p>3-Seat Lounge</p>	33 3/4"	101 1/4"	28 1/2"	COEM4731	1	\$10,433
	Arm height: 24 1/2"					
	Seat height: 16 1/2"					
	Inside: 25 3/4"D 101 1/2"W 12 1/2"H					

Finish Matrix

	Metal Paint Finish on Frame	Emu Tex Finish on Seat	Emu Eco-Leather Finish on Back	Emu Eco-Leather Finish on Arms
Arm Chair	4251 EMU Brown	N.A.	EC02 Brown	N.A.
	7234 EMU Black	5G95 Grey/Black	EC04 Black	N.A.
	7271 EMU White	N.A.	EC01 White	N.A.
	7294 EMU Grey/Green	N.A.	EC03 Grey/Green	N.A.
	7297 EMU Corten	5G97 Rust	EC03 Grey/Green	N.A.
Lounge Chair,	4251 EMU Brown	N.A.	EC02 Brown	EC02 Brown
2-Seat Lounge,	7234 EMU Black	N.A.	EC04 Black	EC04 Black
and 3-Seat	7271 EMU White	N.A.	EC01 White	EC01 White
Lounge	7294 EMU Grey/Green	N.A.	EC03 Grey/Green	EC03 Grey/Green
	7297 EMU Corten	N.A.	EC02 Brown	EC02 Brown

EMU Terramare

Tables

Simple cane and canvas furniture is reinvented for lounge and dining in the Terramare series (pronounced "Tara-mar-ay"). Generous shapes in die-cast aluminum, with leather details, and weather-resistant porcelain stoneware tabletops.

Tip: Top finish will be defaulted to match frame finish on rectangular table.

Standard Includes

- Frame- powder coated painted aluminum:
 - 4251 EMU Brown
 - 7234 EMU Black
 - 7271 EMU White
 - 7294 EMU Grey/Green
 - 7297 EMU Corten
- Top on small, medium, and large coffee tables- Emu porcelain stoneware: ST01 Basaltina, ST02 Statuario White, ST03 Emperador
- Top on rectangular table: painted aluminum defaulted by frame finish selection
- Glides: nylon
- Design: Chiaramonte/Marin

Options

Frame Finish	Textured Paint	No cost
Top Surface Finish	Paint Price Group 01	No cost
	Porcelain 01	No cost

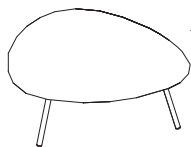
Specification Information

Dimensions			Style Number	Quantity	U.S. Price
D	W	H			



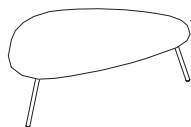
Small Coffee Table

19"	19"	15 3/4"	COEM4735	1	\$1049
-----	-----	---------	-----------------	---	--------



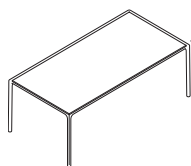
Medium Coffee Table

27 1/2"	29 1/2"	11 3/4"	COEM4736	1	\$1621
---------	---------	---------	-----------------	---	--------



Large Coffee Table

25 1/4"	42 1/2"	13 3/4"	COEM4737	1	\$1916
---------	---------	---------	-----------------	---	--------



Rectangular Table

40 1/2"	80"	29 1/4"	COEM4738	1	\$4929
---------	-----	---------	-----------------	---	--------

► Product Information continued on next page

EMU Terramare

Tables

► **Product Information continued from previous page**

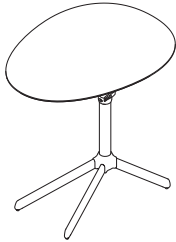
Specification Information

Finish Matrix

	Metal Paint Finish on Frame	Porcelain Stoneware Finish on Top	Metal Paint Finish on Top
Coffee Tables	4251 EMU Brown	ST01 Basaltina, ST02 Statuario White, or ST03 Emperador	N.A.
	7234 EMU Black	ST01 Basaltina, ST02 Statuario White, or ST03 Emperador	N.A.
	7271 EMU White	ST01 Basaltina, ST02 Statuario White, or ST03 Emperador	N.A.
	7294 EMU Grey/Green	ST01 Basaltina, ST02 Statuario White, or ST03 Emperador	N.A.
	7297 EMU Corten	ST01 Basaltina, ST02 Statuario White, or ST03 Emperador	N.A.
Rectangular Tables	4251 EMU Brown	N.A.	4251 EMU Brown
	7234 EMU Black	N.A.	7234 EMU Black
	7271 EMU White	N.A.	7271 EMU White
	7294 EMU Grey/Green	N.A.	7294 EMU Grey/Green

EMU Terramare

Smart Table



Tip: Top finish will match frame finish specified.

Tip: Terramare smart table is height adjustable with an easy to use lever; includes 8.3" of adjustment range.

Standard Includes

- Frame: powder coated aluminum:
 - EMU White
 - EMU Black
 - Grey/Green
 - EMU Brown
 - Cement
 - EMU Corten
- Top: paint to match frame
- Design: Chiaramonte/Marin

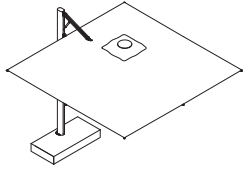
Specification Information

Dimensions			Weight	Style Number	Price
D	W	H			
Terramare Smart Table					
25.6"	19.3"	17.3" - 25.6"	10.8 lbs	EMU726	\$829

EMU Terramare

EMU Shade Pro

Sunshade



Tip: Shade Pro sunshades can be fastened to the ground without a base. In the case of EMU999, it is necessary to add the EMU992 anchoring kit.

Standard Includes

- Structure: powder coated aluminum:
 - Aluminum
 - Antique Iron
 - EMU White
- Shade Upholstery:
 - White
 - Lead
 - Steel Blue
 - Cappuccino
 - Key Lime

Specification Information

Dimensions			Weight	Style Number	Prices
D	W	H			
Shade Pro					
127.165"	119.291"	113.386"	192.9 lbs	EMU995	\$10,192
127.953"	158.661"	111.024"	218.5 lbs	EMU996	\$11,200

Tip: The Shade Pro LED bars kit provides integrated LED lights that fit perfectly into the frame while the cables pass through the inside of the barrel.

Tip: LED light bars kit contains 4 LED bars, 1 remote control, and 1 power unit.

Tip: Shade Pro cemente tile, granite tile, and LED bars kit do not have specifiable color options.

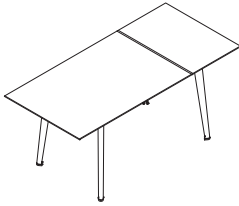
Specification Information

	Style Number	Prices
Shade Pro Accessories		
Shade Pro Anchoring Kit	EMU992	\$134
Shade Pro Large Base	EMU929B8N	\$1988
Shade Pro Cemente Tile	EMU948	\$87
Shade Pro Granite Tile with Handle	EMU988	\$230
Shade Pro LED Bars Kit	EMU999	\$2072

Paint Finish Matrix

	Style Number	Paint	
		Antique Iron	EMU White
Shade Pro Anchoring Kit	EMU992	No cost	No cost
Shade Pro Large Base	EMU929B8N	No cost	No cost
Shade Pro Cemente Tile	EMU948	N.A.	N.A.
Shade Pro Granite Tile with Handle	EMU988	N.A.	N.A.
Shade Pro LED Bars Kit	EMU999	N.A.	N.A.

EMU Plus4 Tables



Tip: Top finish will match frame finish specified.

Tip: Plus4 balcony table available in expanded EMU color palette.

Standard Includes

- Frame: powder coated painted steel:
 - Antique Iron
 - EMU White
 - EMU Black
 - Grey/Green
 - EMU Brown
 - EMU Corten
 - Military Green
 - Taupe
 - Cloud Grey
 - Maple Red
 - Ice White
- Top: paint to match frame
- EMU butterfly opening mechanism for ease of extensibility

Specification Information

Dimensions				Weight	Style Number	Prices
D	W	H				
Plus4 Tables						
31"	20.4" - 47.24"	29.9"	89.5 lbs	Balcony Table	EMU3484	\$2968
35"	43.3" - 62.9"	29.9"	165.5 lbs	6+4 Extendable Table	EMU3485	\$4592
35.4"	43.3" - 86.6"	29.9"	176.3 lbs	8+4 Extendable Table	EMU3486	\$5152
43.4"	43.3" - 86.6"	29.9"	194.4 lbs	8+4 Imperial Table	EMU3487	\$5936

EMU Plus4

EMU Lyze

Seating

Technical and timeless, the Lyze series (pronounced "Leez") features stainless steel backrests that attach to an aluminum frame.

Tip: Back and arm finish is defaulted based on frame finish selection, unless 7271 EMU White is selected for frame finish. If 7271 is selected for the frame finish, then specify back and arms finish 7271 or 7296.

Tip: Chair and arm chair stack six high. Lounge chair stacks four high.

Tip: Additional powder coat paint finishes are available with an upcharge, as shown at right.

Standard Includes

- Frame- powder coated painted aluminum:
 - 7234 EMU Black
 - 7271 EMU White
 - 7294 EMU Grey/Green
 - 7391 EMU Poppy
- Back and arms- painted stainless steel defaulted by frame finish selection, unless 7271 is selected for frame finish:
 - 7271 EMU White
 - 7296 EMU Taupe
- Glides: nylon
- Design: Florent Coirier

Specification Information

Dimensions			Style	Quantity	Base	Options (Add \$ to Base Price)
D	W	H	Number		Price	Other Emu paint (cost per pack)

Chair



21 1/4"	18 1/2"	31 1/4"	COEM5615	4	\$2779	+\$263
Seat height: 17 3/4"						

Arm Chair



22 1/2"	24 1/2"	31 1/4"	COEM5616	4	\$4109	+\$263
Seat height: 17 3/4"						
Arm height: 26 1/2"						

Lounge Chair



28 1/2"	30"	28 3/4"	COEM5617	2	\$2569	+\$263
Seat height: 15 3/4"						
Arm height: 25 1/4"						

► Product Information continued on next page

► **Product Information continued from previous page**

Specification Information

Finish Matrix

Metal Paint Finish on Frame	Metal Paint Finish on Back/Arms
7234 EMU Black	7234 EMU Black
7271 EMU White	7271 EMU White or 7296 EMU Taupe
7294 EMU Grey/Green	7294 EMU Grey/Green
7391 EMU Poppy	7391 EMU Poppy

Finish Matrix

Metal Paint Finish on Frame	Metal Paint Finish on Top
7234 EMU Black	FC01 White/Grey
7271 EMU White	FC01 White/Grey
7294 EMU Grey/Green	FC01 White/Grey
7391 EMU Poppy	FC01 White/Grey
Other EMU paint	FC01 White/Grey



Surface Materials

► **Product Information continued from previous page**

Specification Information

Note: Coalesse reserves the right to reject fabrics when necessary if the quality or construction is not satisfactory for intended use. For most up to date information on fabric usage please check the fabric database on www.coalesse.com.
 EMU indoor cushions are available in a variety of Steelcase fabrics. Please visit the finish library for full list of availability.

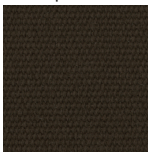
Grade 6 Upholstery

EMU Outdura

For outdoor use on EMU products only



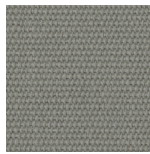
Natural White
5G30



Kona
5G31



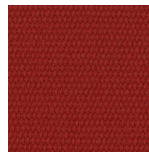
Sandstone
5G32



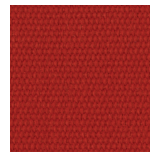
Cadet Grey
5G33



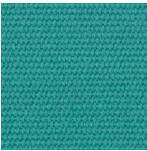
Stone
5G34



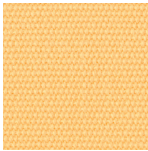
China Red
5G35



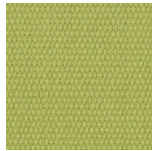
Cardinal Red
5G36



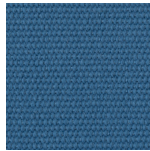
Solid Aqua
5G37



Canary
5G38



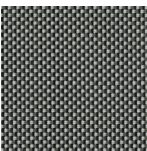
Pesto
5G39



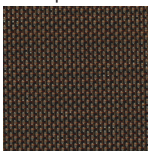
Island Blue
5G41

EMU-Tex

For outdoor use on EMU products only



Grey/Black
5G95



Rust
5G97

► **Product Information continued on next page**

Surface Materials

▶ Product Information continued from previous page

Specification Information

EMU Terramare

EMU Eco-Leather



White
EC01



Brown
EC02



Grey/Green
EC03



Black
EC04

EMU Paint



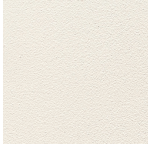
EMU Brown
4251



Antique Iron
4257



EMU Black
7234



EMU White
7271



Blue
7272



Green
7273



EMU Grey/Green
7294



EMU Taupe
7296



EMU Corten
7297



EMU Poppy
7391

EMU Lyze - Fiber Cement



White/Grey
FC01

▶ Product Information continued on next page

Surface Materials

Surface Materials

▶ **Product Information continued from previous page**

Specification Information

EMU Terramare - Porcelain Stoneware



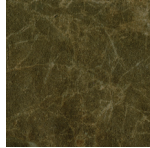
Basaltina

ST01



Statuario
White

ST02



Emperador

ST03

EMU Outdoor Fabric

Remove loose dirt with soft bristle brush or hose down with cold water. Clean with mixture of water and mild soap.

Rub in mixture with soft brush and allow to thoroughly soak into fabric. Rinse thoroughly with cold water and air dry.

Never use water over 100 degrees Fahrenheit. Do not machine dry. For light cleaning, avoid using detergents.

For stubborn stains use mixture of one gallon cold water, 1/2 cup bleach and 1/4 cup mild soap for one hour.

Detergents can be used without harm, though they may remove some of the water and stain resistant properties in the fabric.

Legend

- = Not available
- = Available

	4251	4257	7234	7271	7272	7273	7294	7296	7297	7318	7139
Heaven Seating, Tables, and Pouf	•	•	■	■	•	•	•	•	•	•	•
Heaven Vases	•	•	•	■	•	•	•	•	•	•	•
Pattern Collection	•	•	■	■	■	■	•	•	•	•	•
Round Collection	■	■	■	■	•	•	•	•	•	•	•
Terramare Collection	■	•	■	■	•	•	■	•	■	•	•
Lyze Collection	•	•	■	■	•	•	■	■	•	■	■

Tip: Select product lines allow for other EMU paint finishes (those shown as not available on the matrix) as an available option.

Resources

Style Number Index	88
---------------------------	-----------

Style Number Index

Style Number	Page	Description
CH0080100OAK	45	CH008 Round Coffee Table
CH0080100WAL	45	CH008 Round Coffee Table
CH008078OAK	45	CH008 Round Coffee Table
CH008078WAL	45	CH008 Round Coffee Table
CH008088OAK	45	CH008 Round Coffee Table
CH008088WAL	45	CH008 Round Coffee Table
CH07BEECH	16	Shell Lounge Chair
CH07OAK	16	Shell Lounge Chair
CH07WALNUT	16	Shell Lounge Chair
CH101L	17	CH100 Series Club Chair
CH103L	17	CH100 Series Sofa
CH108	48	CH108 Glass Coffee Table (CH100 Series)
CH20BEECH	31	Elbow Chair CH20
CH20OAK	31	Elbow Chair CH20
CH23	34	Carl Hansen Dining Chair
CH24ASH	32	Wishbone Chair CH24
CH24BEECH	32	Wishbone Chair CH24
CH24MAHOGANY	33	Wishbone Chair CH24
CH24OAK	32	Wishbone Chair CH24
CH24SMKOAK	32	Wishbone Chair CH24
CH24TEAK	33	Wishbone Chair CH24
CH24WALNUT	32	Wishbone Chair CH24
CH25OAK	18	Paddle Lounge Chair CH25
CH25SMKOAK	18	Paddle Lounge Chair CH25
CH25WAL	18	Paddle Lounge Chair CH25
CH327BEECH	43	CH327 Dining Table
CH327OAK	43	CH327 Dining Table
CH327OAKWAL	43	CH327 Dining Table
CH327WALNUT	43	CH327 Dining Table
CH401	19	Airport Lounge Chair CH401
CH417	46	Carl Hansen Tray Table
CH445	21	Wing Lounge Chair CH445
CH446	21	Wing Ottoman
CH44OAK	20	Ladderback Lounge Chair CH44
CH468	22	Oculus Lounge Chair CH468
CH53BEECH	28	CH53 Stool
CH53OAK	28	CH53 Stool
CH56	41	Carl Hansen Barstool
CH58	41	Carl Hansen Low Barstool
CH88BEECH	30	CH88 Chair Wood Seat
CH88OAK	30	CH88 Chair Wood Seat
CH88PBEECH	29	CH88 Chair Upholstered Seat
CH88POAK	29	CH88 Chair Upholstered Seat
CH88PSMKOAK	29	CH88 Chair Upholstered Seat
CH88SMKOAK	30	CH88 Chair Wood Seat
CHE004	37	Carl Hansen Embrace Chair
CHE005	35	Carl Hansen Embrace Chair
CHE006	39	Carl Hansen Embrace Stool
CHE007	40	Carl Hansen Embrace Stool
CHE015	23	Carl Hansen Embrace Lounge Chair
CHE016	25	Carl Hansen Embrace Footstool
CHE02031	44	Carl Hansen Embrace Dining Table
CHE02043	44	Carl Hansen Embrace Dining Table
CHE02054	44	Carl Hansen Embrace Dining Table
CHE02118	47	Carl Hansen Embrace Coffee Table

Style Number	Page	Description
CHE02131	47	Carl Hansen Embrace Coffee Table
CHMG501	27	Carl Hansen Cuba Chair
CO2465	68	Emu Round Chair
CO2465B	70	Emu Round Stool Cushion
CO2465C	70	Emu Round Chair Cushion
CO2466	68	Emu Round Arm Chair
CO2467	68	Emu Round Stool
CO2467B	69	Emu Round Stool Cushion
CO2467C	69	Emu Round Stool Cushion
CO2469	68	Emu Round Lounge
CO2469B	71	Emu Round Lounge Cushion
CO2469C	71	Emu Round Lounge Cushion
CO2470	73	Emu Round Table
CO2471	73	Emu Square Table
CO2472	73	Emu Square Table
CO2473	73	Emu Square Table
CO2474	73	Emu Rectangle Table
CO2475	74	Emu Counter Table
CO2476	73	Emu Round Rectangular Table
CO2477	74	Emu Side Table
CO2479	73	Emu Round Extendable Dining Table
CO2480B	59	Emu Heaven Chair Back Cushion
CO2480C	59	Emu Heaven Chair Back Cushion
CO2481B	60	Emu Heaven Arm Chair Back Cushion
CO2481C	60	Emu Heaven Arm Chair Back Cushion
CO2485	56	Emu Heaven Chair
CO2485B	57	Emu Heaven Indoor Cushion
CO2485C	57	Emu Heaven Outdoor Cushion
CO2486	56	Emu Heaven Arm Chair
CO2486B	58	Emu Heaven Indoor Cushion
CO2486C	58	Emu Heaven Outdoor Cushion
CO2487	56	Emu Heaven Lounge Chair
CO2487B	61	Emu Heaven Lounge Cushion
CO2487C	61	Emu Heaven Lounge Cushion
CO2488B	63	Emu Heaven Lounge Pillow
CO2488C	63	Emu Heaven Lounge Pillow
CO2489B	62	Emu Heaven Lounge Back Cushion
CO2489C	62	Emu Heaven Lounge Back Cushion
CO2493	67	Emu Heaven Round Table
CO2493V	67	Emu Heaven Glass Top
CO2494	67	Emu Heaven Round Table
CO2494V	67	Emu Heaven Glass Top
CO2495	64	Emu Heaven Pouf
CO2495B	65	Emu Heaven Indoor Cushion
CO2495C	65	Emu Heaven Outdoor Cushion
CO2495V	64	Emu Heaven Glass Top
CO2496	67	Emu Heaven Side Table
CO2497	66	Emu Heaven High Vase
CO2498	66	Emu Heaven Low Vase
COEM4728	75	Emu Terramare Seating Arm Chair
COEM4729	75	Emu Terramare Seating Lounge Chair
COEM4730	75	Emu Terramare Two-Seat Lounge
COEM4731	76	Emu Terramare Three-Seat Lounge
COEM4735	77	Emu Terramare Table
COEM4736	77	Emu Terramare Table

Style Number	Page	Description
COEM4737	77	Emu Terramare Table
COEM4738	77	Emu Terramare Table
COEM5615	82	Emu Lyze Seating Chair
COEM5616	82	Emu Lyze Seating Arm Chair
COEM5617	82	Emu Lyze Seating Lounge Chair
CONMBASKET	3	Nanimarquina Basket Rug
CONMDIAGONAL	7	Nanimarquina Diagonal Rug
CONMDOLOREZ	15	Nanimarquina Do-Lo-Rez Rug
CONMFLORA	14	Nanimarquina Flora Rug
CONMMESH	8	Nanimarquina Mesh Rug
CONMPADPT	12	Nanimarquina Rug Pad
CONMPATCH	6	Nanimarquina Patch Rug
CONMRERUG	13	Nanimarquina Re-Rug Rug
CONMSHADE	10	Shade Rug
CONMSHADEOUT	10	Shade Rug Outdoor
CONMSHADEPOUF	11	Shade Pouf
CONMSHADEPOUFOUT	11	Shade Pouf
CONMSHADOWS	4	Nanimarquina Shadows Rug
CONMSTROKES	5	Nanimarquina Strokes Rug
CONMTONES	9	Tones Rug
EMU3484	81	EMU Plus4 Balcony Table
EMU3485	81	EMU Plus4 6+4 Extendable Table
EMU3486	81	EMU Plus4 8+4 Extendable Table
EMU3487	81	EMU Plus4 8+4 Imperial Table
EMU726	79	EMU Terramare Smart Table
EMU929B8N	80	EMU Shade Pro Large Base
EMU948	80	EMU Shade Pro Cemente Tile
EMU988	80	EMU Shade Pro Gran Tile with Handle
EMU992	80	EMU Shade Pro Anchoring Kit
EMU995	80	EMU Shade Pro 3x3
EMU996	80	EMU Shade Pro 4x3
EMU999	80	EMU Shade Pro LED Bars Kit
EMUCO2790	54	Rio R50 Chair - 4 Pack
EMUCO2791	54	Rio R50 Armchair - 4 Pack
EMUCO2792	54	Rio R50 Lounge Chair - 2 Pack
EMUCO2793	54	Rio R50 Barstool - 4 Pack
EMUCO2795	54	Rio R50 Swing Lounge Chair
EMUCO2797	55	Rio R50 Coffee Table

Trademark List

- ® The following are registered trademarks for products of Steelcase Inc. or one of its related corporate entities: 4 o'clock, 900 Series, à la carte, Airtouch, Ally, Amia, Answer, Archipelago, Avenir, Ballet, Bix, Brayton International, Cachet, Canopy, Canto, Chancellor, Coalesse, Confidante, Context, Convene, CopyCam, Criterion, Crushed Can, Currency, dash, Designtex, Details, Detour, Drive, Elective Elements, Ellipse, Ember Chrome, Emerge, E-Table 2, FYI, Garland, Gentry, Ginkgo Biloba, Groupwork, Ideo, Jacket, Jenny, Jersey, Kart, Kick, LaCosta, Leap, LessThanFive, Let's B, LiveBack, Max-Stacker, media:scape, Metro, Migrations, Mitra, Montage, Nurture, Oriana, Parade, Pathways, PCT, Permiso, Player, Portal, Power Pincher, Progeny, Protégé, R2, Rally, Relevant, Reply, Rizzi Arc, Sensor, Series 9000, Siento, Sieste, Sine, Softcare, Springboard, Steelcase, Steelcase Design Partnership, Stella, Stow Davis, Swathmore, Sylvi, TeamWork, Technique, Texpress, Think, Thunder, Topo, Train, turnstone, Underline, Unison, Vecta, Viridian, Walden, Werndl, and X-Stack.
- ® The following registered trademarks are under license from AWI Licensing Company, Dover, DE: SoundScapes, DuraBrite, BioBlock, and Armstrong.
- ® The following registered trademarks are under license from Byrne Electrical, Rockford, MI: Interport, Mini-Port, Axil Z, and Ellora.
- ® The following is a registered trademark of DuPont, Wilmington, DE: Corian.
- ® The following is a registered trademark of Genlyte Thomas Company, Louisville, KY: Lightolier.
- ® The following is a registered trademark of Hilti Corporation, FL-9494 Schaan, Principality of Liechtenstein: Hilti.
- ® The following is a registered trademark of Leviton Manufacturing Company, Little Neck, NY: Decora.
- ® The following is a registered trademark of Mechanical Plastics Corp, Elmsford, NY: Toggler.
- ® The following is a registered trademark of Microsoft Corporation, Redmond, WA: Microsoft.
- ® The following are registered trademarks of Orangebox Ltd., Cardiff, UK: Orangebox.
- ® The following is a registered trademark of Panduit Corporation, Lockport, IL: Panduit.
- ® The following is a registered trademark of Trav (Press), Cuneo, Italy: Assisa.
- ® The following is a registered trademark of Virtual Ink, Boston, MA: mimioActive.
- ® The following registered trademarks are under license from Wilkhahn Furniture Products: Avera, Senzo, Versal, and Wilkhahn FS.
- ® The following are registered trademarks of Polyvision Corp: Flow, Motif, Polyvision, Sans, and Serif.
- ® The following is a registered trademark of Wilsonart International, Temple, TX: Chemsurf.
- ® The following is a registered trademark of Wiremold, West Hartford, CT: Wiremold.
- ® The following is a registered trademark of EMU Group S.P.A., Perugia, Italy: EMU.
- ® The following is a registered trademark of Security People, Inc.: Digilock.
- ® The following are registered trademarks of Natural Capital Partners Europe Limited: CarbonNeutral and the CarbonNeutral Certified logo.
- ™ The following are trademarks for products of Steelcase Inc. or one of its related corporate entities: Access, Active/Passive Shelf, Agree, Ainsley, Akira, Alcove, Alerion, Alight, Amaris, American Elect, American Tradition, ap40, Arbor, Arriva, Asana, Ascot, Aspekt, Astor, Await, Bassline, B-Free, Bira, Bivi, Bixby, Bottomline, Brody, Brook, Buoy, Burton, c:scape, Calla, Calm, Camber, Campfire, Capa, Cappuccino, Cesar, Chester, Chord, Circa, Clarendon, Classic Rectangular, Clipper, cobl, Collaboration, Community, Company, Convey, Cortex, Coupe, Crea, Crew, Cura, Cypress, Davenport, Dearborn, Deck, Déjà, Denizen, Denska, Derby, DeskWizard, Divisio, Donovan, Dune, Duo, Echo, Edge, Elbrook, Elsa, Empath, Empress, Enea, ēno, EnSync, Enviro, Escapade, Everwall, Exchange, Exponents, Field, Flat Top, FlexFrame, Flip Top, Flute, Folio, FrameOne, FreeFlow, Frontier, Galilei, Gesture, Ginger, Ginkgo, Go Wall, Grip, Groove, Hatchback, Hawthorne, Hitch, Host Collection, Hosu, Huddleboard, i2i, Impact, Indy, InfoLink, IOS, I-Solve, Jack, Jarrah, Jetty, Juice, Kami, Kast, Kathryn, Lagunitas, Lark, L'Attitude, LearnLab, Leela, Lincoln, Linden, LiveSeat, Loria, Lyric, Malibu, Malibu Too, Mansfield, Marathon, Marien152, Martini, Mason, Masque, Migration, Millbrae, Mineral, Mingle, Mystic, Mystic Metal, Mystic Wood, Montara650, Montreal, MoreThanFive, Move, Nadia, Neighbor, nesso, Nickel, Nikko, Nod, Node, Norfolk, Ocular, Ology, Ontrak, Oom, Opus, Orchid, Outlook Collection, Ovation, Paloma, Paperflo, Parliament, Pasio, Passerelle, Patriarch, Payback, Peek, Pile File, Pisa, Pool, Potrero415, PUCK, QiVi, Quba, Rave, Reed, Regard, Relay, Reunion, Ripple, Riser, Roam, Rocco, Rocky, RoomWizard, Runner, Satellite, Sawyer, ScapeSeries, Senti, Sentinel, Senza, Sequoia, Session, ShareLink, Shield, Shortcut, Sidewalk, SILQ, Skylar, Slumber, Smoke, Snug, Soft Leaf, Sonata, Sorrel, SOTO, Southside, Stationkits, Steelcase Karman, Steelcase Series, Stiletto, Surprise!, Surround, Switch, Symphony, Sync, TagWizard, Tava, TeamStudio, TeamTheater, Tenaro, Tenor, Terrazzo, Theorem, Thread, Topaz, Touchdown, Tour, Tower Too, Trees, Trillium, Trolly, tX2, U-Free, Umami, Underscore, Uno, V.I.A., Verb, Verge, Verlay, Victor2, Visalia, Waldorf, Woodruff, Workspring, WorkValet and X-tenz.
- ™ The following is a trademark of Microsoft Corporation, Redmond, WA: Windows.
- ™ The following is a trademark of Rodman Industries, Inc., Oconomowoc, WI: ResinCore1.
- ™ The following is a trademark of Ultrafabrics, LLC, Elmsford, NY: Ultraleather.
- ™ The following trademarks are under license from Wilkhahn Furniture products: Cana, Linus, Logon, Picto, Range, Stitz, Thema, Timetable, and Tubis.
- ™ The following is a trademark of Cradle to Cradle Products Innovation Institute, Oakland, CA: Cradle to Cradle Certified.
- ™ The following trademarks are under license from Walter Knoll: Andoo, Bob, Lazlo, Lox, Ribbon, and Together.
- ™ The following trademarks are under license from PP Møbler: Bar and Flag Halyard.
- ™ The following trademarks are under license from Carl Hansen: Elbow, Paddle, Shell, Wing, and Wishbone.
- ™ The following trademarks are under license from Cambridge Sound Management, LLC, Cambridge, MA: QtPro Soundmasking, Qt Quiet Technology, and Sonet Qt.
- ™ The following is a trademark of Electri-Cable Assemblies, Shelton, CT: Interact.
- ™ The following is a trademark of Clestra Hauserman: IRYS.
- ™ The following is a trademark of Wiesner-Hager Möbel GmbH: Nooi.
- ™ The following are trademarks of Polyvision: Accord, a³, e³, Boundri, and Nota.
- ™ The following is a trademark of Bostock Company, Inc: SnapCab.
- ™ The following is a trademark of Williams-Sonoma, Inc: West Elm.
- ™ The following is a trademark of Elena Marquina Testor: nanimarquina.
- ™ The following is a trademark of Forbo International SA: Forbo.
- ™ The following are trademarks of Orangebox Ltd., Cardiff, UK: Air³, Aspect, Avi, Away from the Desk, Border, Campers & Dens, Coppice, Cubb, Kim, On the QT, Ramsey, Skomer, Sully, Track-B, and Vale.
- ™/® The following are trademarks or registered trademarks of AMQ Solutions, LLC: AMQ, AMQ logo, KINEX, iLINE, ACTIV, AMOBI, CONCUR, 3F, REVI, S-SERIES, JAKU, SIYA, ZILO, BODI, FL-X, TIZU, EMBANK, TEKTIS and BIXBY.
- ™/® The following are trademarks or registered trademarks of Viccarbe Habitat, S.L.: Holy Day, Last Minute, Wrapp, Foro, Kelly, Noha, Viable, Solar, Sistema, Savina, Designed In The Sun, Cambio, Aleta, Viccarbe (logo), Viccarbe.

Trademarks used here in are the property of Steelcase Inc. or of their respective owners.