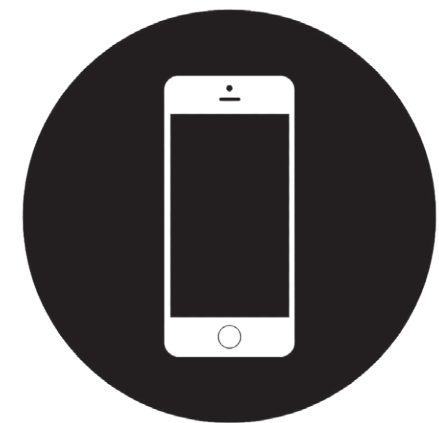
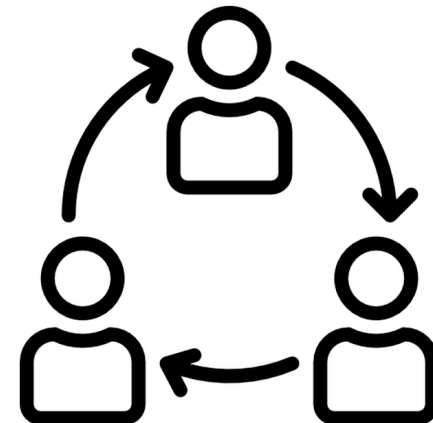
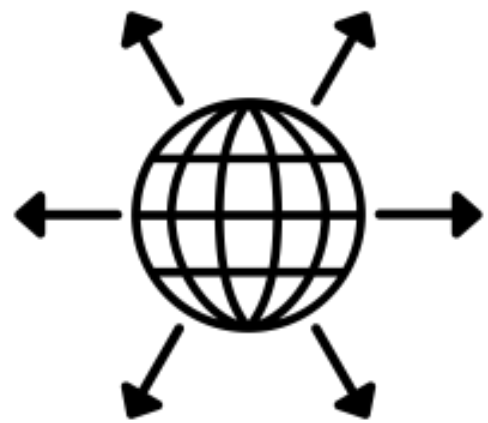


next

atlanta

statement of inquiry



project goals

As next continues their company expansion through physical, global, & technological growth, they strive to promote collaboration, productivity, & creativity within the workplace, & need an office space that will support their company objectives. By designing a multifunctional, flexible, & comfortable office space, collaboration, productivity, & creativity within the workplace will be further promoted, while also fostering a social & innovative company culture.



who is next?

next is a global tech company that focuses on health & wellness products & technology. This small start-up is based out of San Francisco, California & is looking to expand through the opening of satellite offices across the country & potentially the world, starting with Atlanta, Georgia. This expansion will not only allow them to acquire diverse talent, but it will also create a new space that fosters their company goal of overall wellbeing & happiness, starting with the workplace.

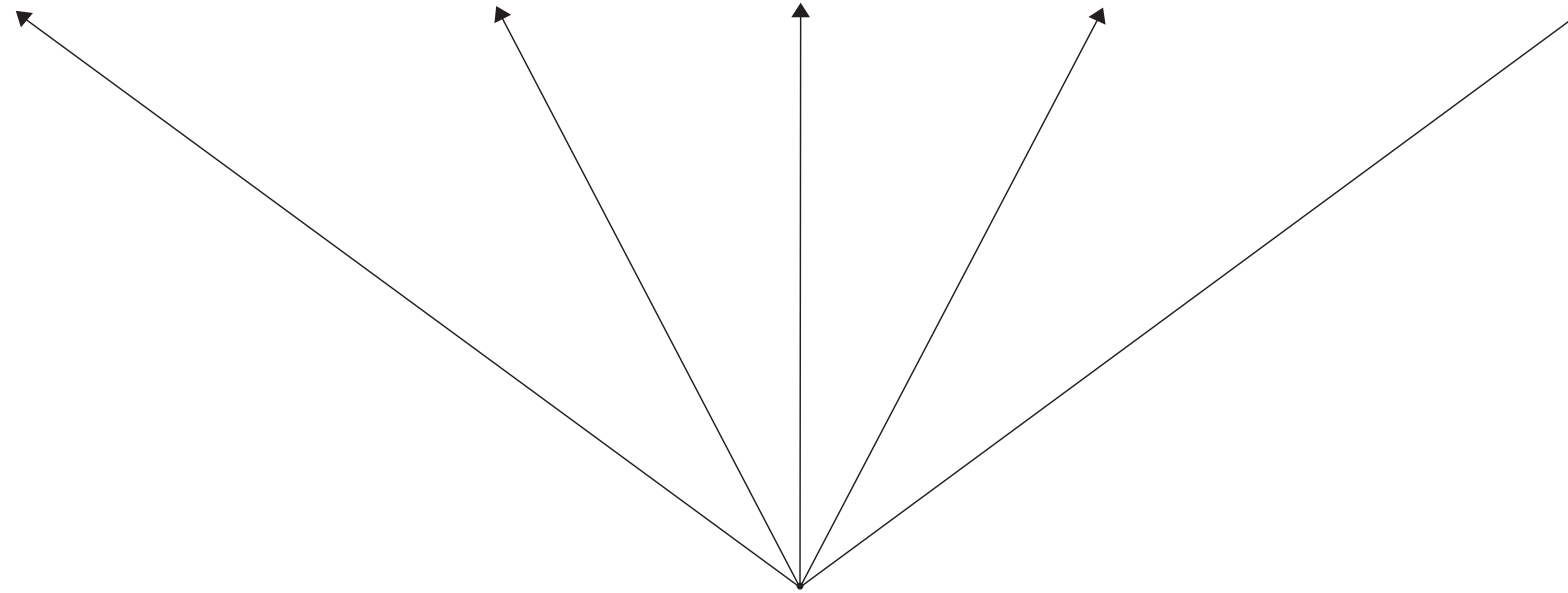
site & location



Atlanta, GA

The next satellite office is located in Atlanta, Georgia in the neighborhood of midtown. Atlanta is an extremely diverse city, with strong cultural ties to music, food, and southern tradition. This city is becoming increasingly popular, attracting people of all different ages and backgrounds from around the country. Midtown, in particular, is extremely fast growing as the population of residents and number of businesses continues to rise in this up-and-coming area.

concept - expansion



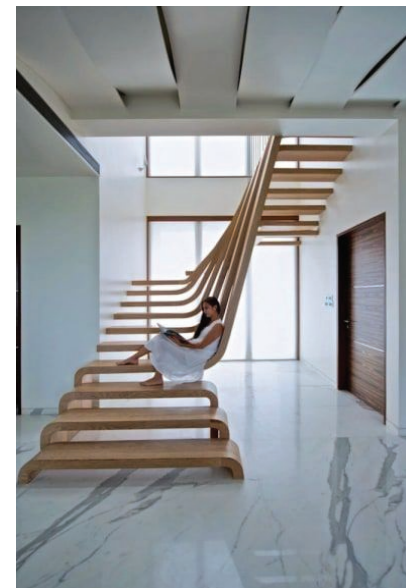
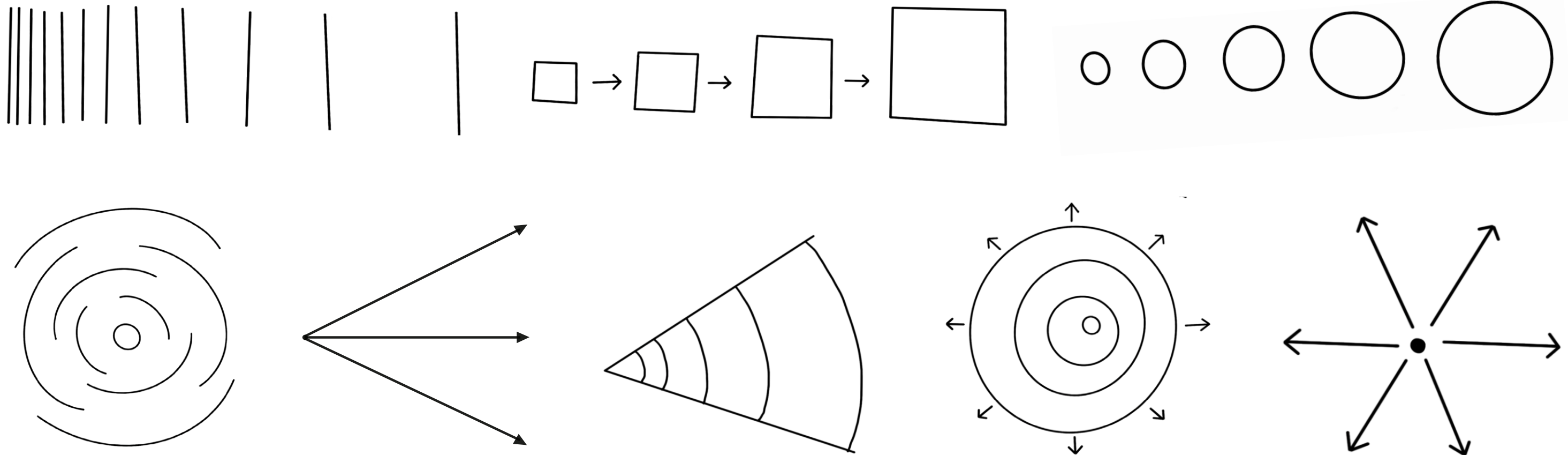
concept statement

As next expands as a company - physically, globally, & technologically - expansion as a spatial concept can emphasize the forward movement and growth of the company through their workplace design.

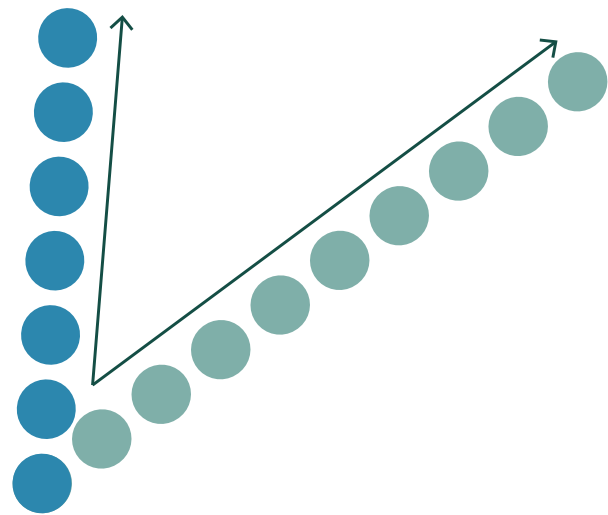
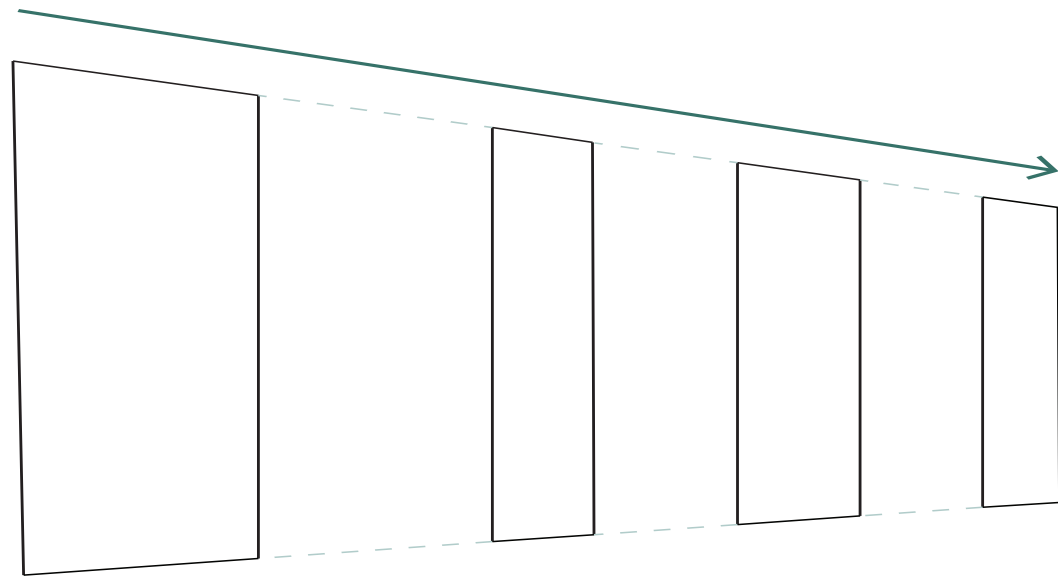
description

Through the creation of a clear center point, spaces will be designed radially, expanding from that point. In this design, the center point is the monumental staircase, which serves as the entrance point to the main upper level office space. By implementing a radial organization that stretches across the entire plan, the walls, room dividers, architectural features, & furniture arrangements will also follow the expanding rays to clearly depict the concept in plan. Additionally, floor finishes & lighting elements follow this radial system to further emphasize the concept. Not only will the incorporation of expansion emphasize the company's rapid success and growth, but it will aid in the creation of a workspace that is flexible, collaborative, creative, innovative, & social, while promoting the overall wellbeing of the employees who inhabit the space.

concept development

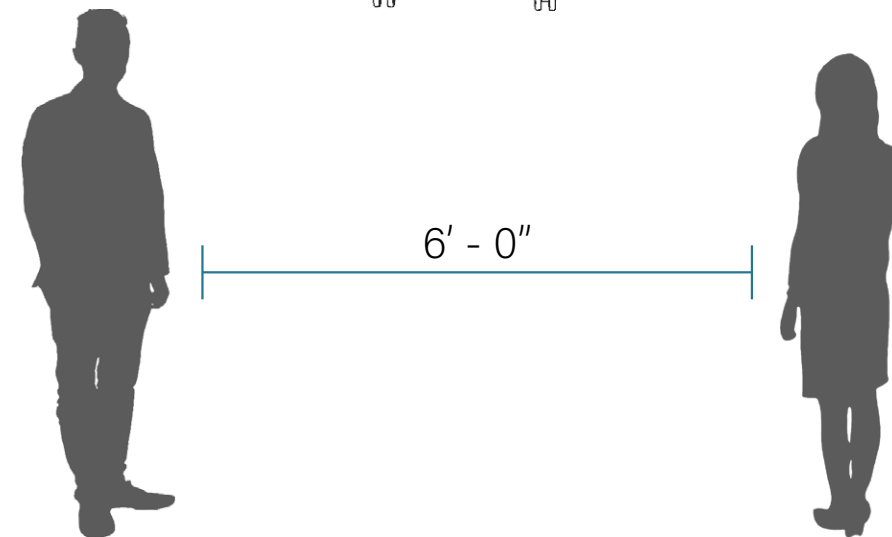
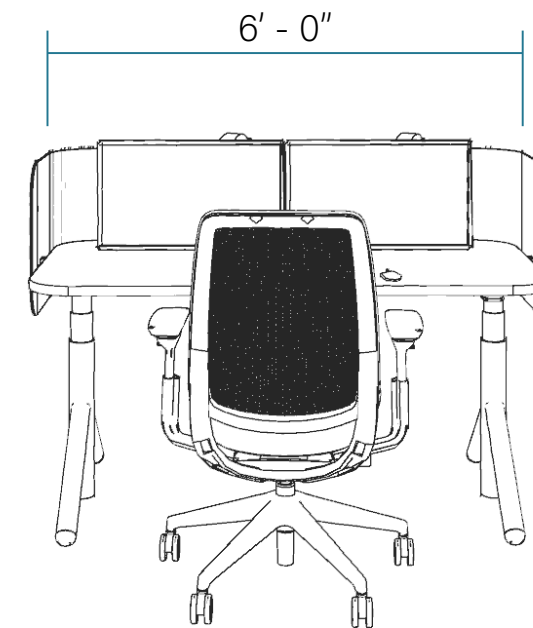


research & human behavior



gestalt theory

The Gestalt Theory focuses on how the human brain is able to fill in the blanks and create associations through visual perception of an abstract form, shape, or grouping. This theory ties in with the concept of expansion, as it is shown in a radial formation throughout the floor plan. Even though the entire pattern is not followed, the architectural features follow this radial organization enough for it to be seen throughout the entirety of the plan.



proxemics

Proxemics focuses on measurable distances between humans within a space and cultural setting. This field of study is particularly important right now, due to the coronavirus pandemic and social distancing guidelines that are being recommended & enforced by the government. Due to the ever-changing health & safety guidelines, it is important that the next office space is adaptable to the changing regulations and social distancing guidelines.

biophilia



what is biophilia?

Biophilia focuses on the love of life & living things, with an emphasis on nature & the outside world. The incorporation of plants and other living elements into a space is proven to improve the overall wellbeing, productivity, and happiness of the inhabitants. Additionally, live plants significantly improve the indoor air quality of a space, which can greatly improve physical health. Since next is a health & wellness company, they have a strong desire to create a workplace that can support the overall wellbeing of their employees. Through the incorporation of biophilic elements, such as live plant walls & planters, floor to ceiling windows and natural light, and the creation of a strong connection between the indoor and outdoor environments, this workplace will help next reach their goal of a thriving company.

inspiration imagery



biophilia



lighting



lighting



materiality



biophilia



materiality



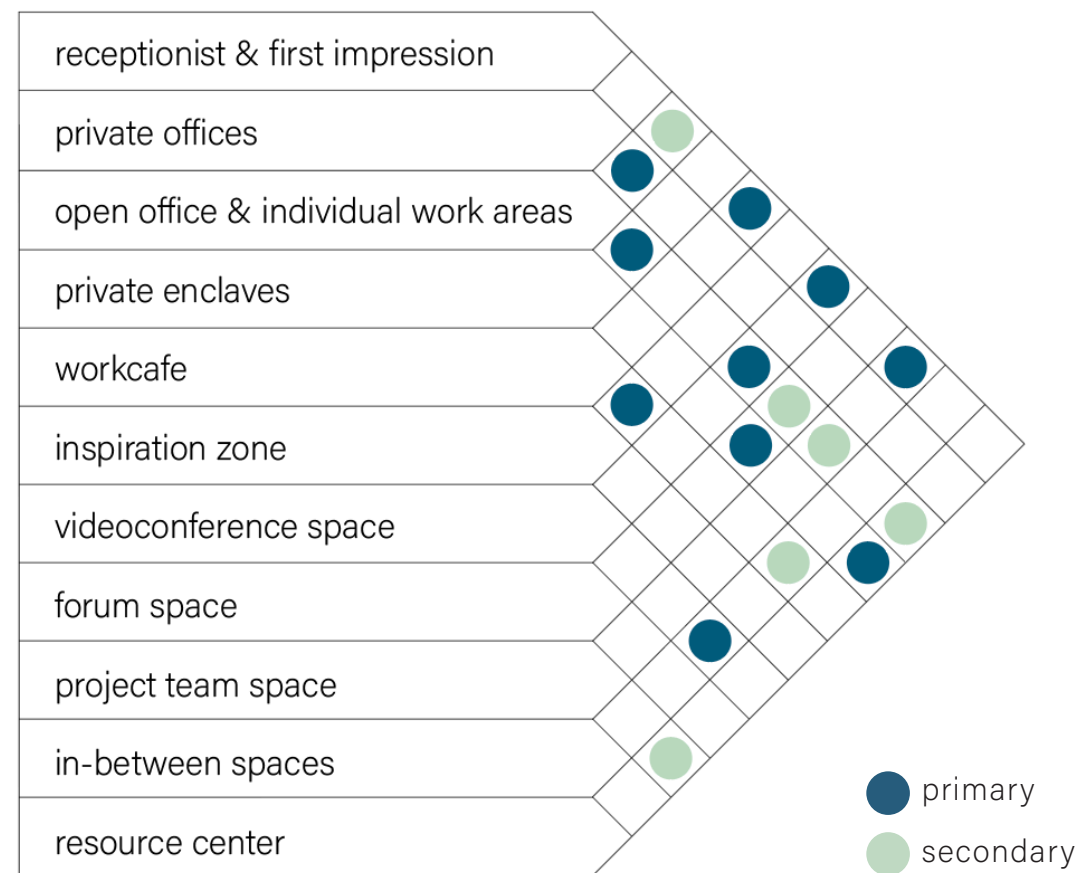
flooring transitions



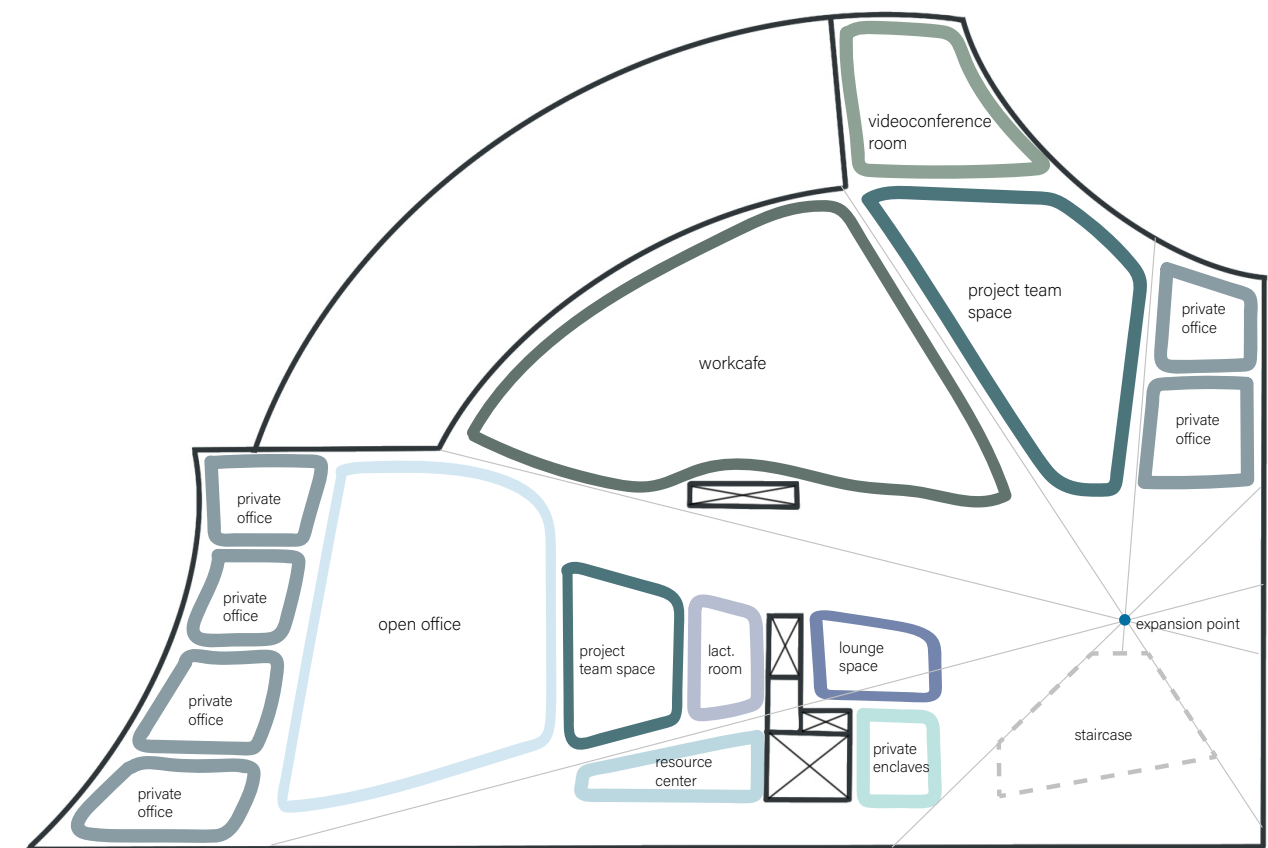
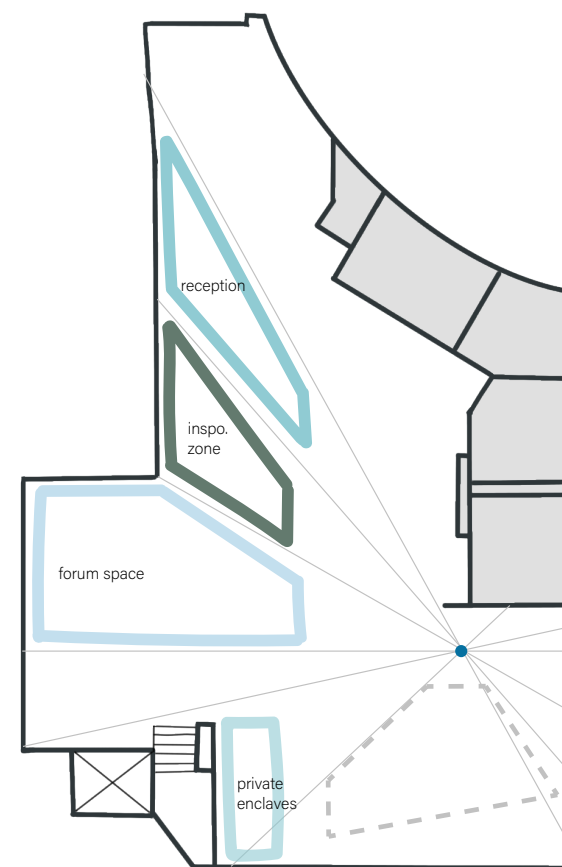
materiality

space planning & programming

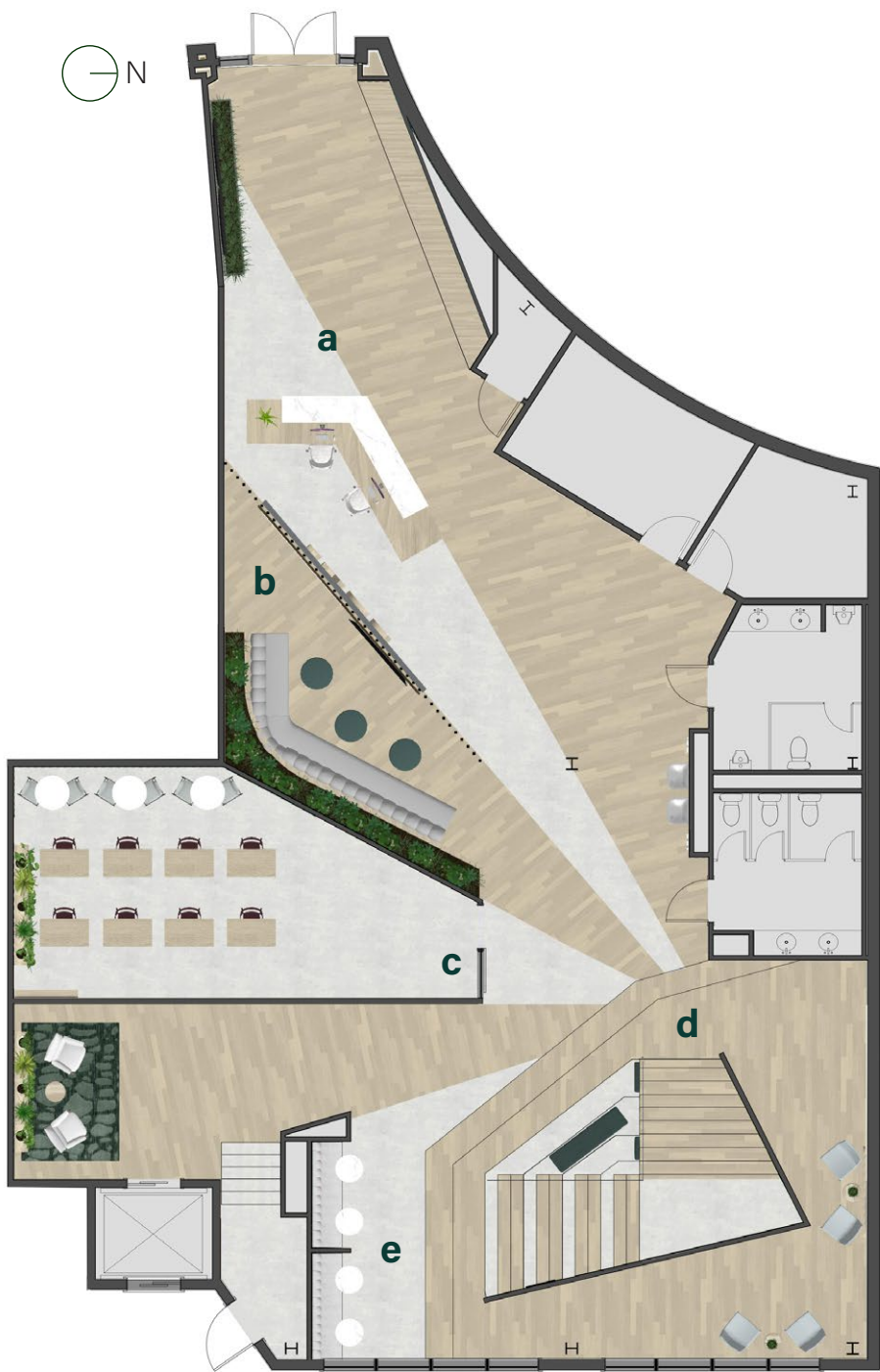
adjacency matrix



block diagram



floor plans



lower level plan
nts

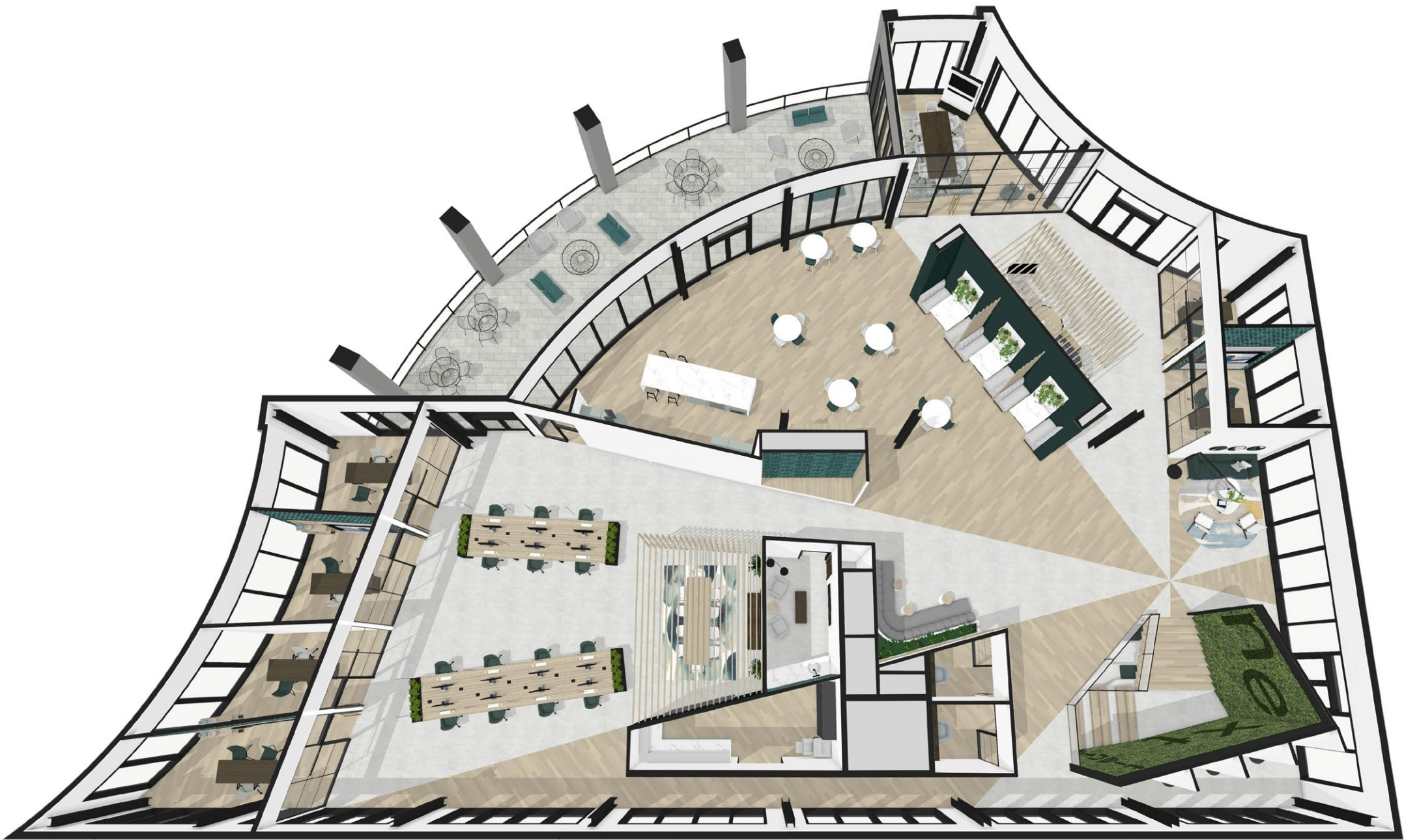


upper level plan
nts

- | | | | | |
|----------------------------|---------------------------------|---------------------------------|------------------------------------|----------------------------|
| a. reception | d. monumental stair | g. project team space | j. private offices | m. resource room |
| b. inspiration zone | e. booth seating | h. outdoor work & lounge | k. open office | n. private enclaves |
| c. forum | f. video conference room | i. workcafe | l. mother's / wellness room | o. lounge |

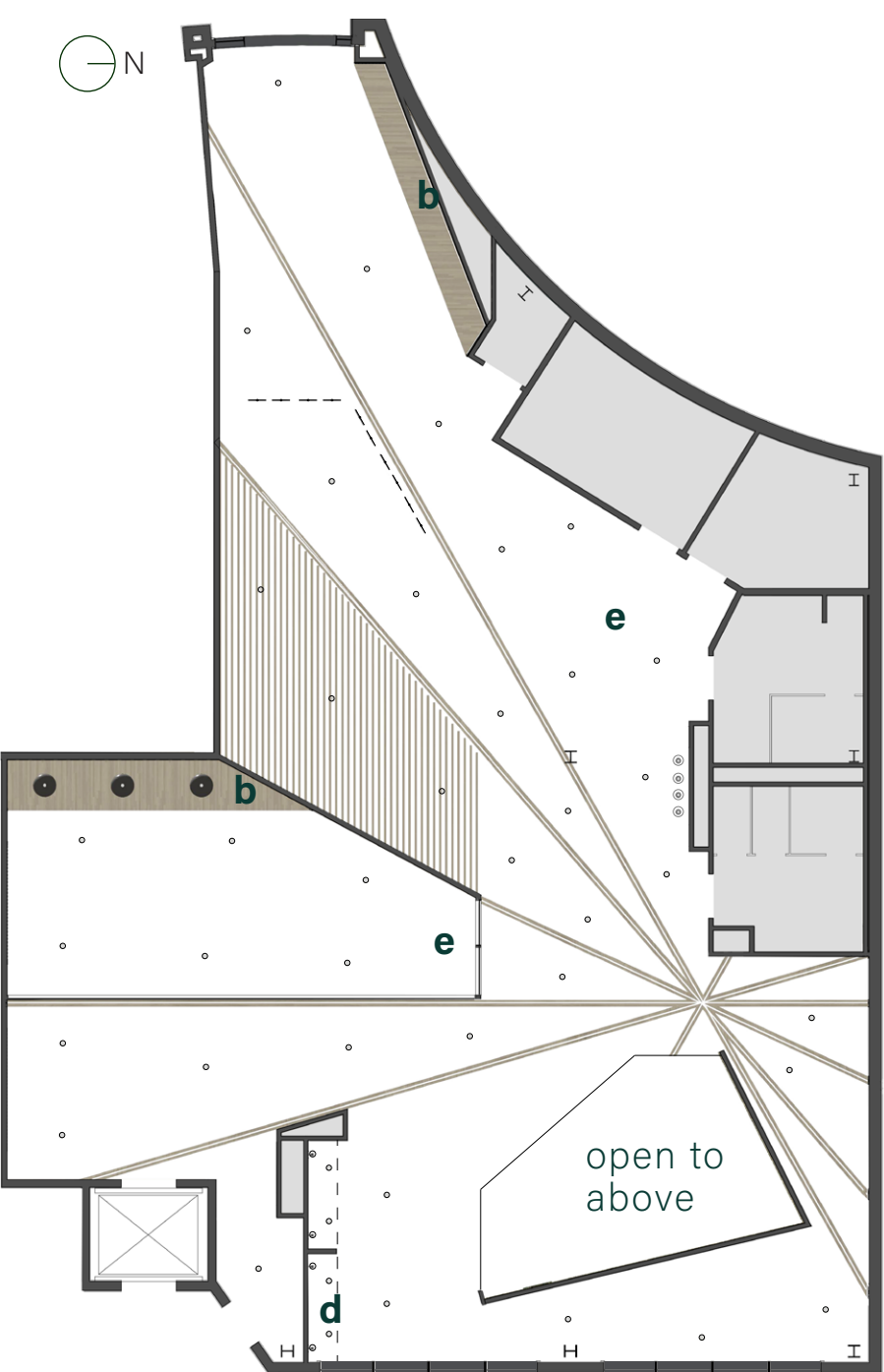


lower level axon
nts

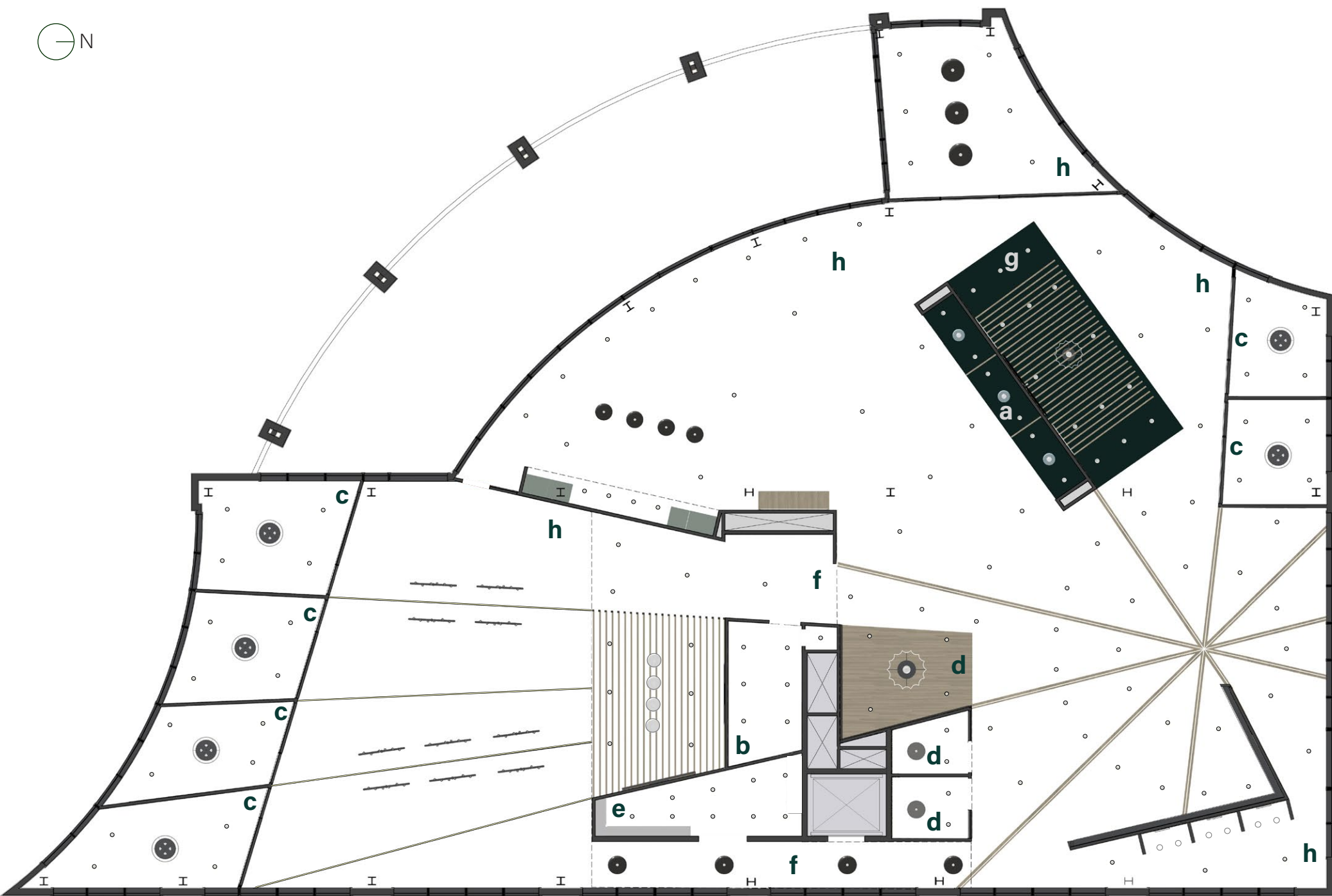


upper level axon
nts

reflected ceiling plans



lower level plan
nts



upper level plan
nts

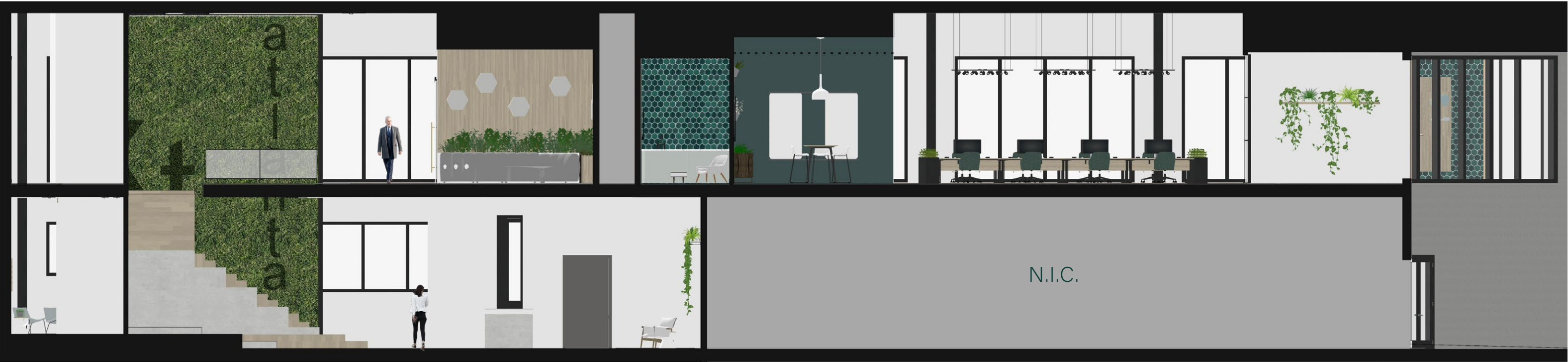
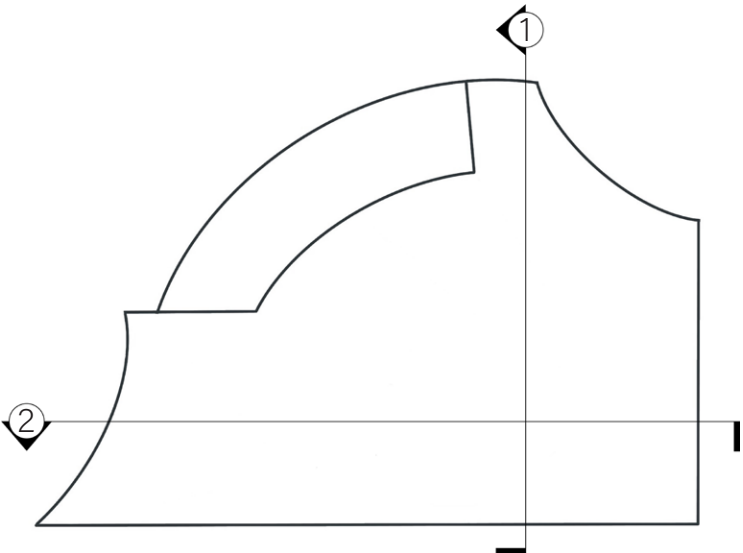
- a. 9' - 0"
- b. 11' - 0"
- c. 11' - 6"
- d. 12' - 0"
- e. 12' - 6"
- f. 13' - 0"
- g. 13' - 6"
- h. 15' - 0"

- recessed down light
- magnifier pendant
- bowl pendant
- wall sconce
- linear LED lighting
- globe pendant
- pendant light
- drum pendant
- pendant light
- drum pendant
- track lighting
- pendant light

sections



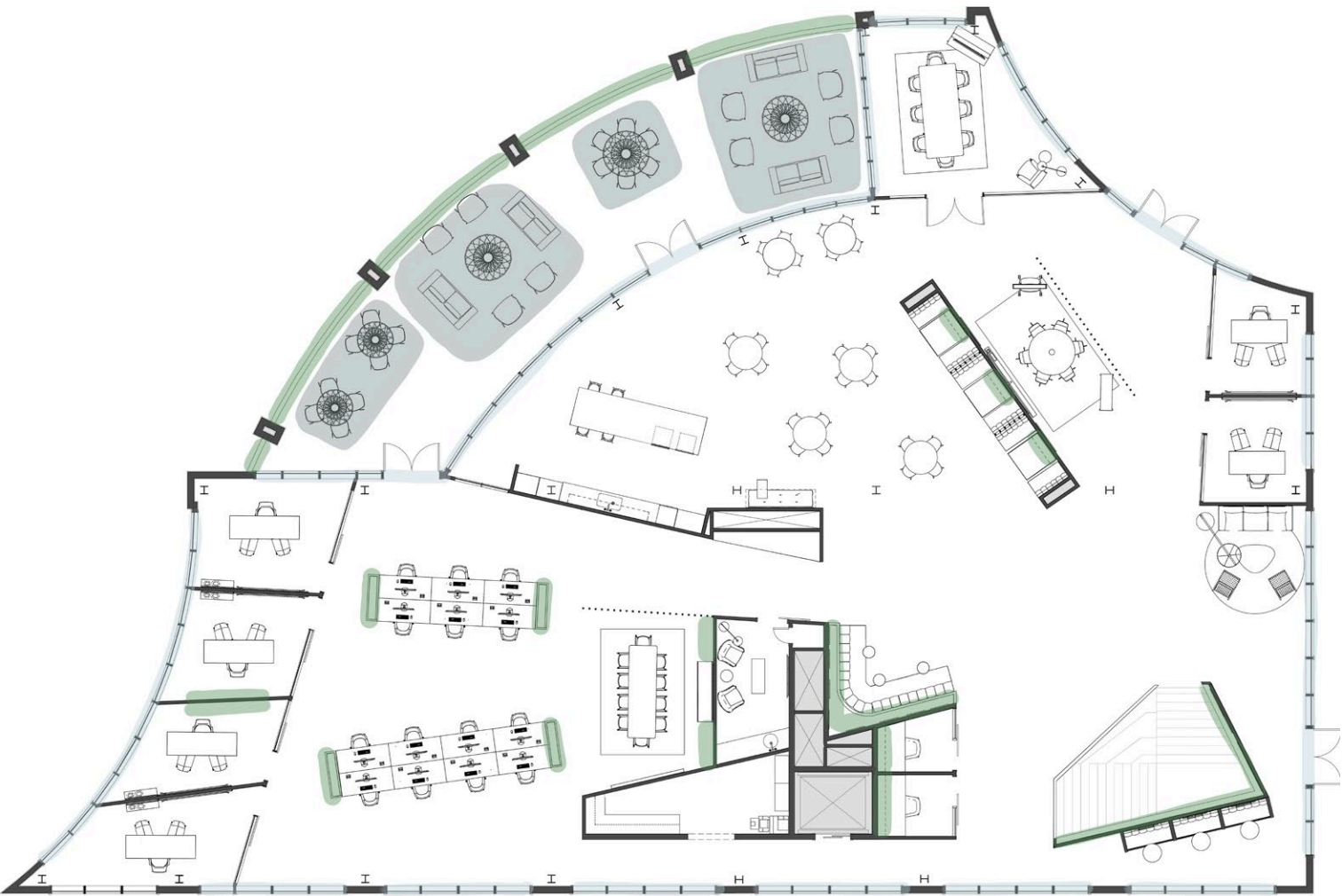
section 1
nts



section 2
nts

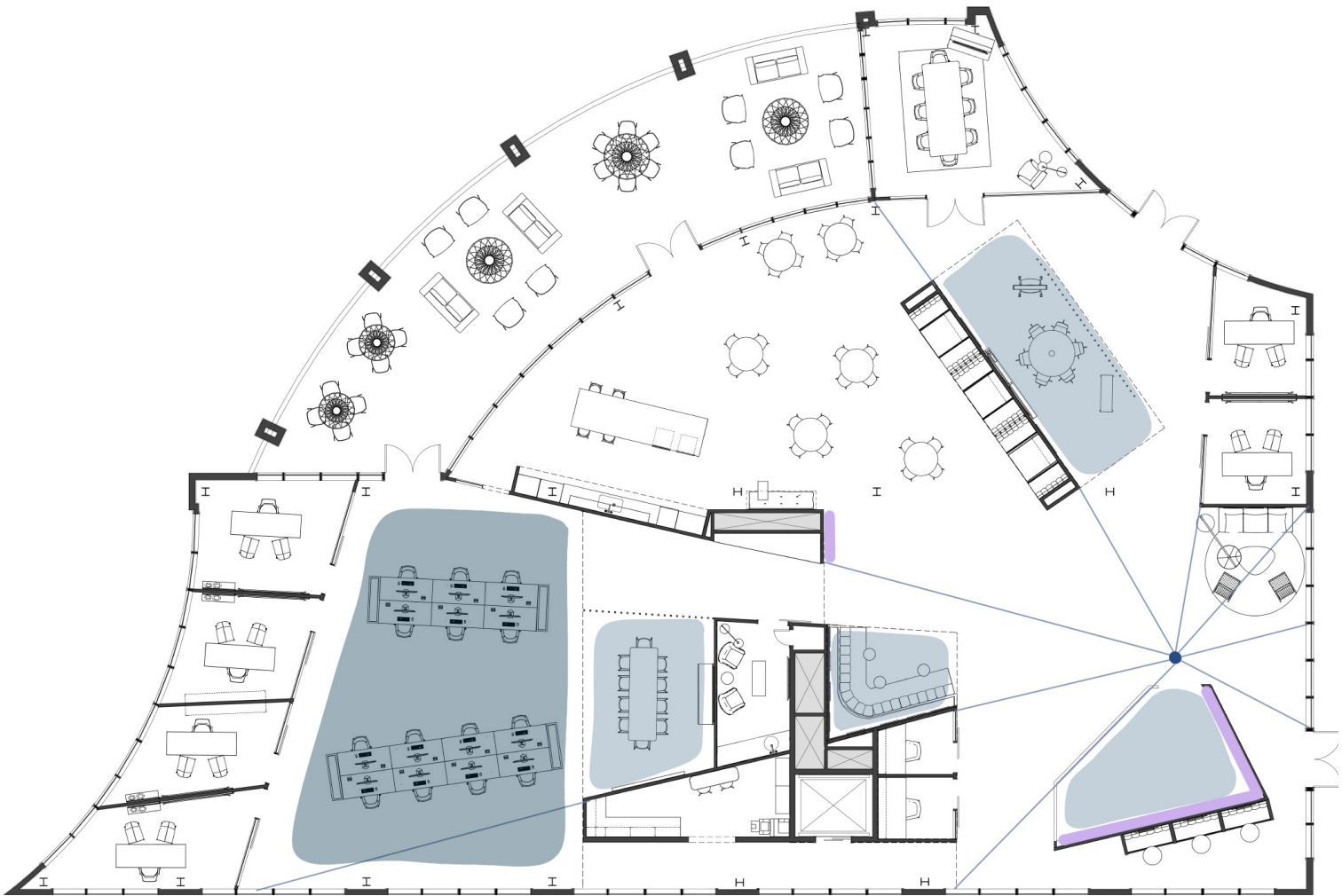
diagramming

biophilia diagram



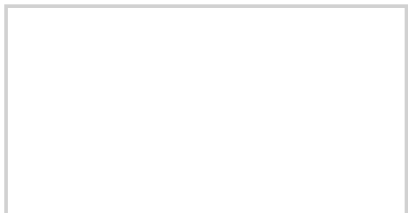
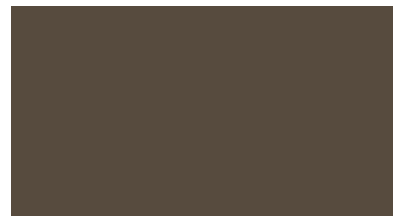
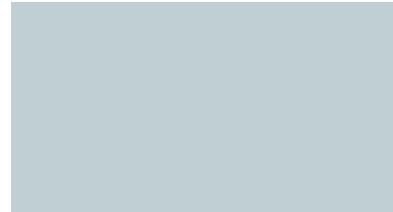
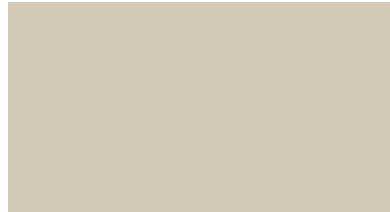
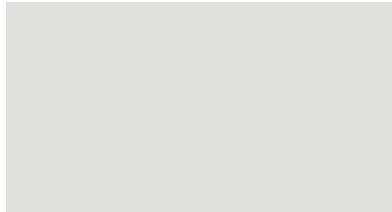
- plant features
- floor to ceiling windows
- outdoor work spaces

wayfinding diagram



- architectural features
- lighting features
- supergraphics & branding
- material changes (marked by radial lines)

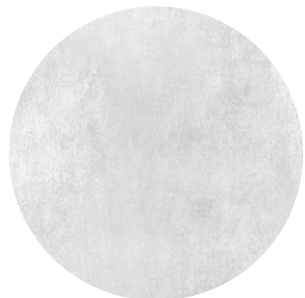
color palette



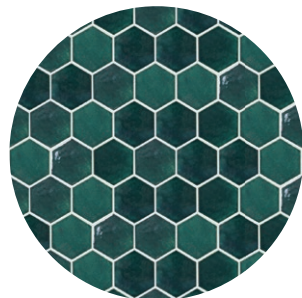
material selection



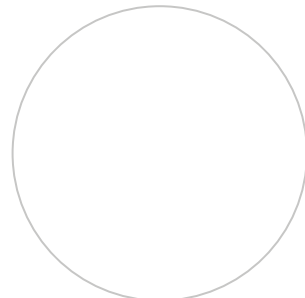
hardwood flooring



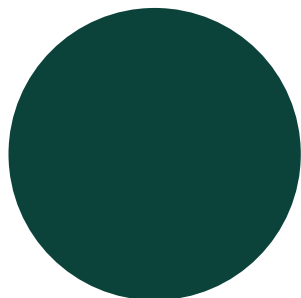
concrete flooring



accent wall tile



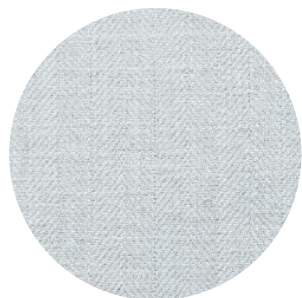
wall & ceiling paint



accent wall paint



accent wood



upholstery fabric



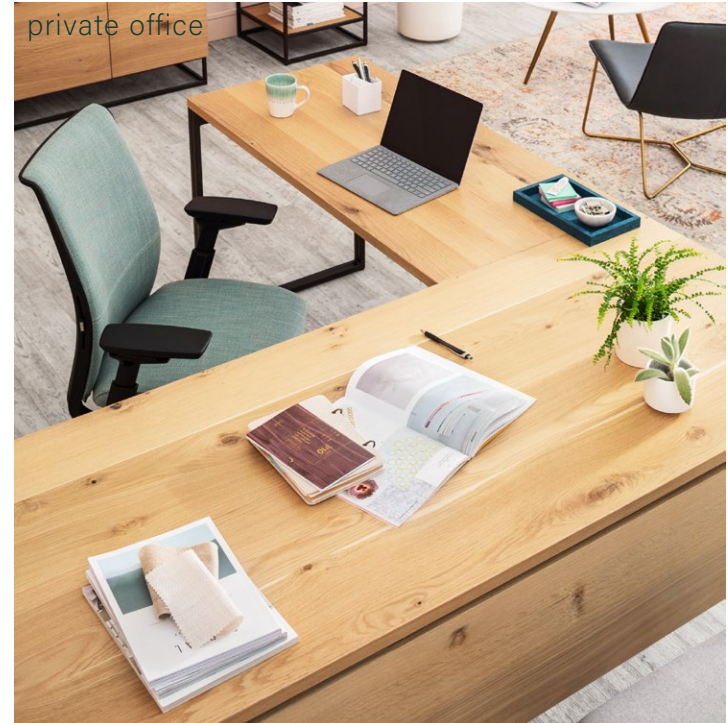
aluminum door frames

furniture selection

lounge



private office



lounge



video conference



workcafe



private office





reception



- mercury mosaics bluegrass hexagon tile
- white oak engineered hardwood flooring
- polished concrete flooring
- quartz marble countertops
- benjamin moore super white paint
- formafantasma magnifier pendant
- brushed black aluminum planter box





lower level stair



forum space



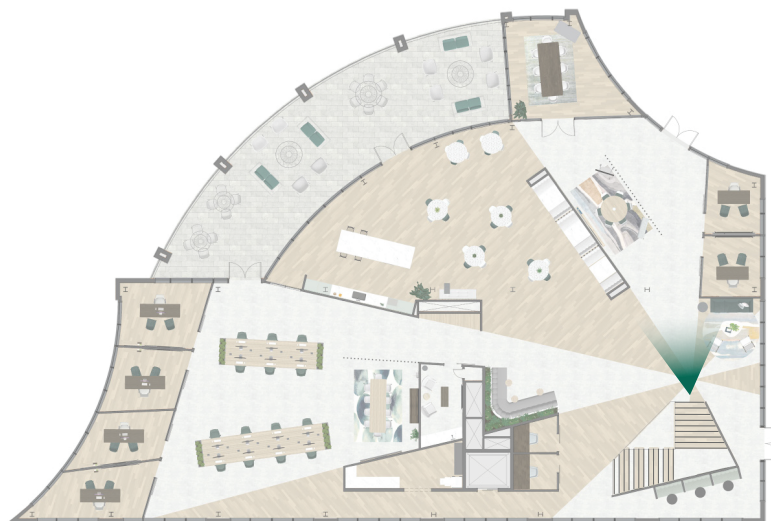
- mercury mosaics bluegrass hexagon tile
- white oak engineered hardwood flooring
- polished concrete flooring
- benjamin moore super white paint
- flos skygarden s
- west elm work greenpoint desk
- coalesse lessthan5 chair
- coalesse montara650 table
- west elm work slope barstool







second level entry

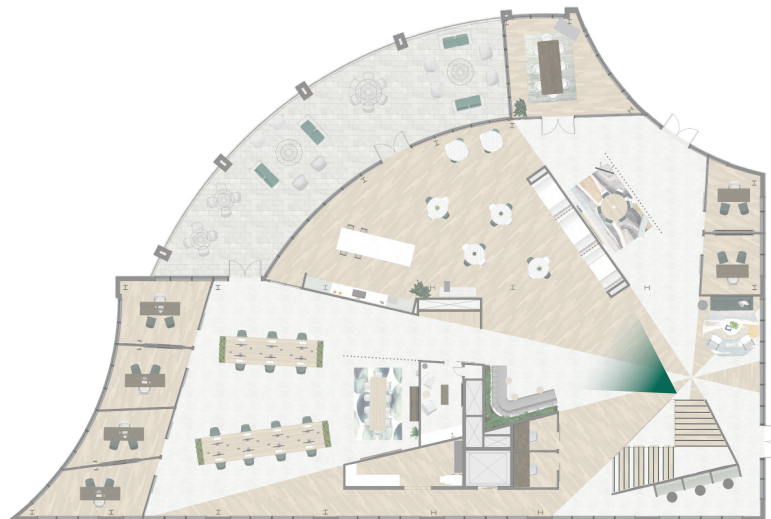


- white oak engineered hardwood flooring
- benjamin moore super white paint
- benjamin moore hunter green
- coalesse cuba chair
- west elm work mesa sectional
- west elm sunkissed landscape rug
- turnstone campfire big lamp





second level entry

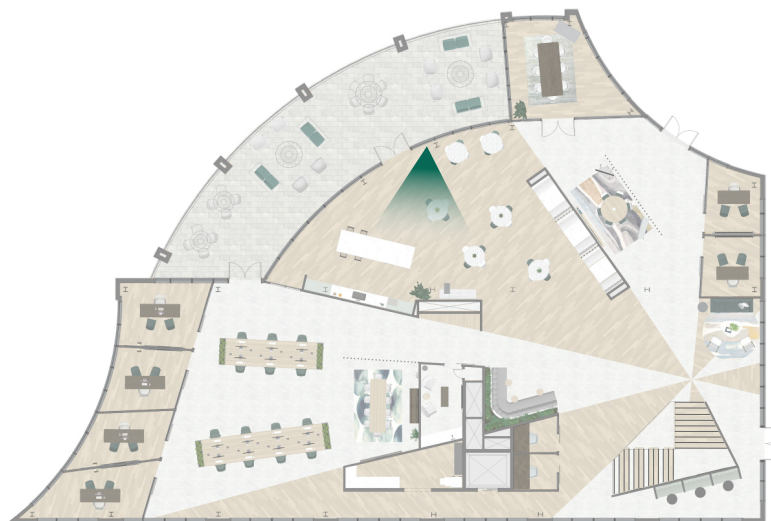


- mercury mosaics bluegrass hexagon tile
- white oak engineered hardwood flooring
- benjamin moore super white paint
- benjamin moore hunter green
- west elm work belle sectional
- room & board modern leighton pendant
- coalesse await table





workcafe

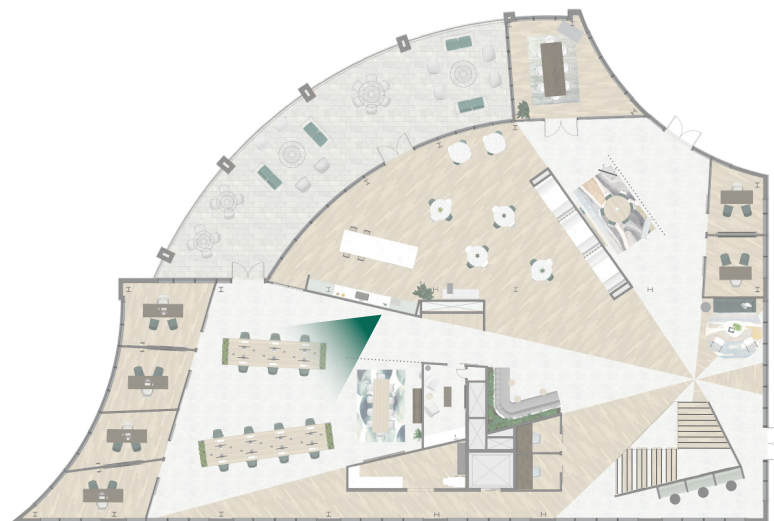


- mercury mosaics bluegrass hexagon tile
- white oak engineered hardwood flooring
- quartz marble countertops
- benjamin moore antique jade paint
- flos skygarden s
- coalesse enea altzo943 chair
- mattiazzi branca stool





open office



- mercury mosaics bluegrass hexagon tile
- polished concrete flooring
- benjamin moore super white paint
- brushed black aluminum planter box
- ascoli hanging track lighting
- west elm work sterling chair
- west elm work greenpoint desk

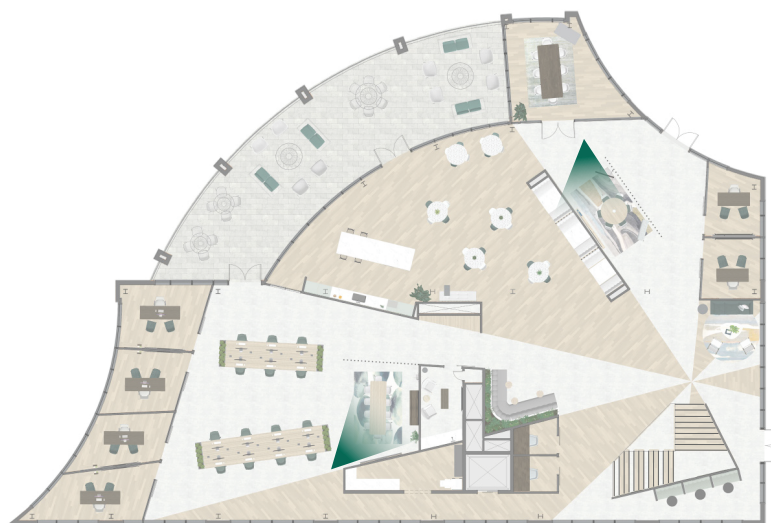




project team 1



project team 2



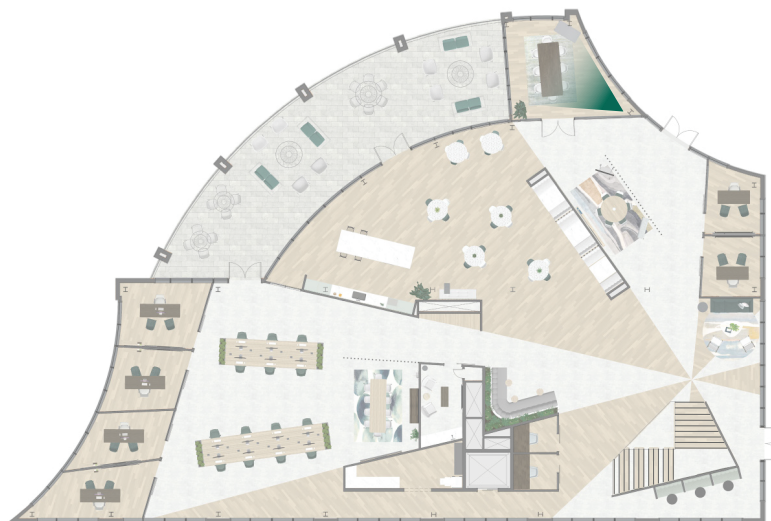
- west elm watercolor circles rug
- west elm work slope barstool
- potero415 light table
- eglo coretto 1 pendant light
- mcleay 1 - light single drum pendant
- west elm work greenpoint credenza
- west elm nightscape rug
- steelcase roam tv







video conference room



- white oak engineered hardwood flooring
- benjamin moore super white paint
- bashian radiance c183 seafoam rug
- potero415 light table
- pallas floor planter
- flos skygarden s
- west elm work sterling chair

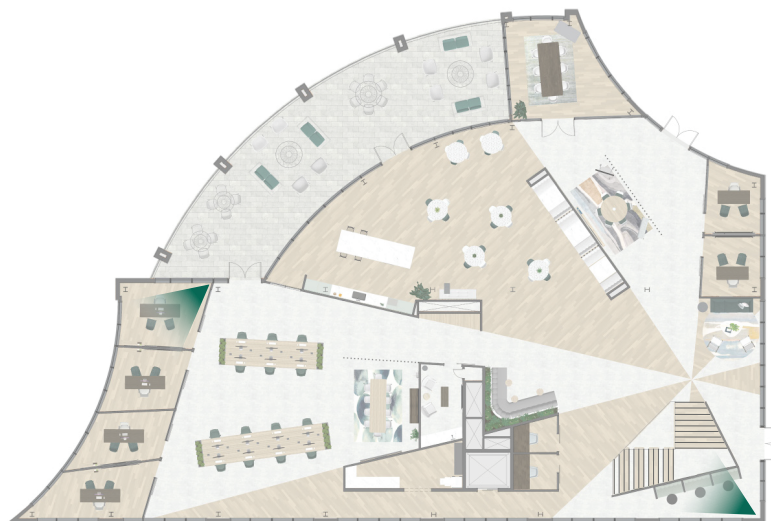




private office



booth seating area



mercury mosaics bluegrass hexagon tile

white oak wall paneling

polished concrete flooring

black honed marble

benjamin moore super white paint

polished concrete flooring

blu dot perimeter large pendant

steelcase siento desk chair

elective environments desk system

west elm work slope guest chair





next
thank you !

